

**BIZARRE**  
SPORTS

孙冬艳(Cindy Sun)

总经理(Manager Director)

Cell phone: +86 139 9568 3615

WhatsApp: +86 139 9568 3615

E - m a i l : cindy.sun@bizarre-sports.com

**武汉比赞贸易有限公司**

**WUHAN BIZARRE SPORTS CO., LTD.**

中国湖北省武汉市东湖高新技术开发区光谷大道光谷8号

邮编: 430074

Unit 2, 6# Building, Guanggu No. 8, Optics

Valley Ave, East Lake Hightech Development

Zone, Wuhan 430074 China



# Classic yarn-dyed striped rugby long-sleeve Polo

## Color Guidline

- **Poly/Cotton** Yarn, better performance on **shrinkage control**, better hand feel, and clean looking
- **Anti-pilling**
- **Color Fastness To Sunlight 4.5 Grade**
- **Color Fastness To Soap 4.5 Grade**
- Available for Five different type badge
- Support individual Nickname/Playername
- Support full class name print

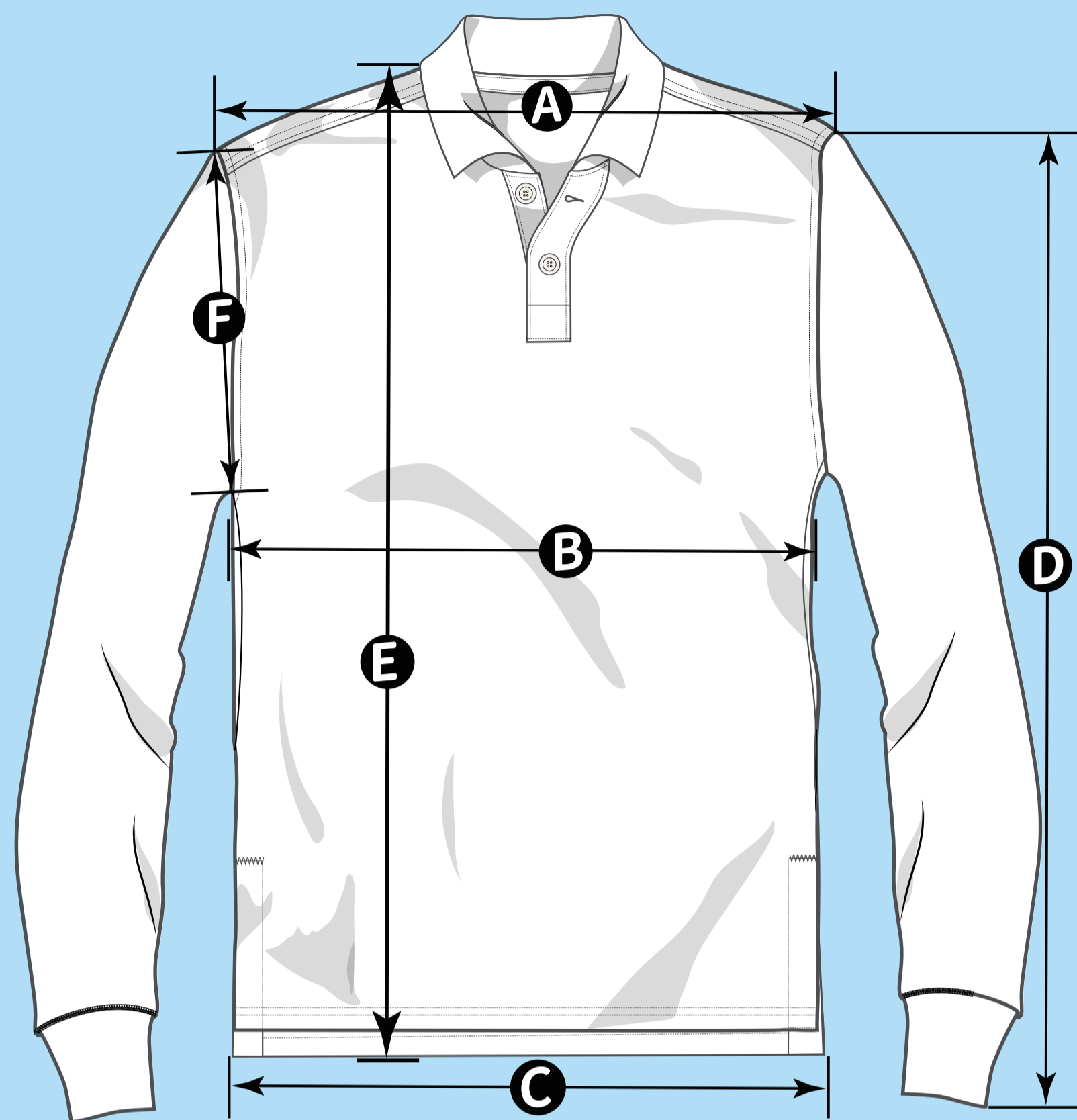
## Front



## Back



# Body measurement Guide of Rugby Polo



For maximum performance and comfort, please refer to the measurement tables as below.

## Note:

*All the table measures are in centimeter (cm).*

*All size measure when garments lay flat.*

*Size Chart for Rugby Polo.*

*Size Chart is only a suggested/recommend size chart.*

*Contact us if you need help with sizing.*

## Adult

	Position/cm	XS	S	M	L	XL	2XL	3XL	4XL
A	Cross Shoulder	40	43	45.5	48	50.5	53	55.5	58
B	Chest(front and back)	100	106	111	116	121	126	131	136
C	Hem	100	106	111	116	121	126	131	136
D	Sleeve length(from center back)	79.5	83.5	86.5	89	91.5	93.5	94	95
E	Back center length	71	72.5	74.5	77.5	79	79	79	80
F	Amhole(curve)	52	54.5	57	59.5	62	64.5	67	69.5

## Youth

	Position/cm	J2	J4	J6	J8	J10	J12	J14
A	Cross Shoulder	27	29	31	33	35	37	40
B	Chest(front and back)	73.5	77.5	81.5	85.5	89.5	93.5	100
C	Hem	73.5	77.5	81.5	85.5	89.5	93.5	100
D	Sleeve length(from center back)	56	60	64	68	71.5	75	78
E	Back center length	45	48.5	52	56	60	64	67.5
F	Amhole(curve)	35	37.5	40	42.5	45	47.5	50

# Knitted Rugby Polo 70 Colors Available Yarn

## Color Guidline

Body full color range

Embroidery/Badge full color range

Placket tape only available for White/Navy/Black

Rubber button only available for White

Body color can be customised

Contact us if you couldn't find your color



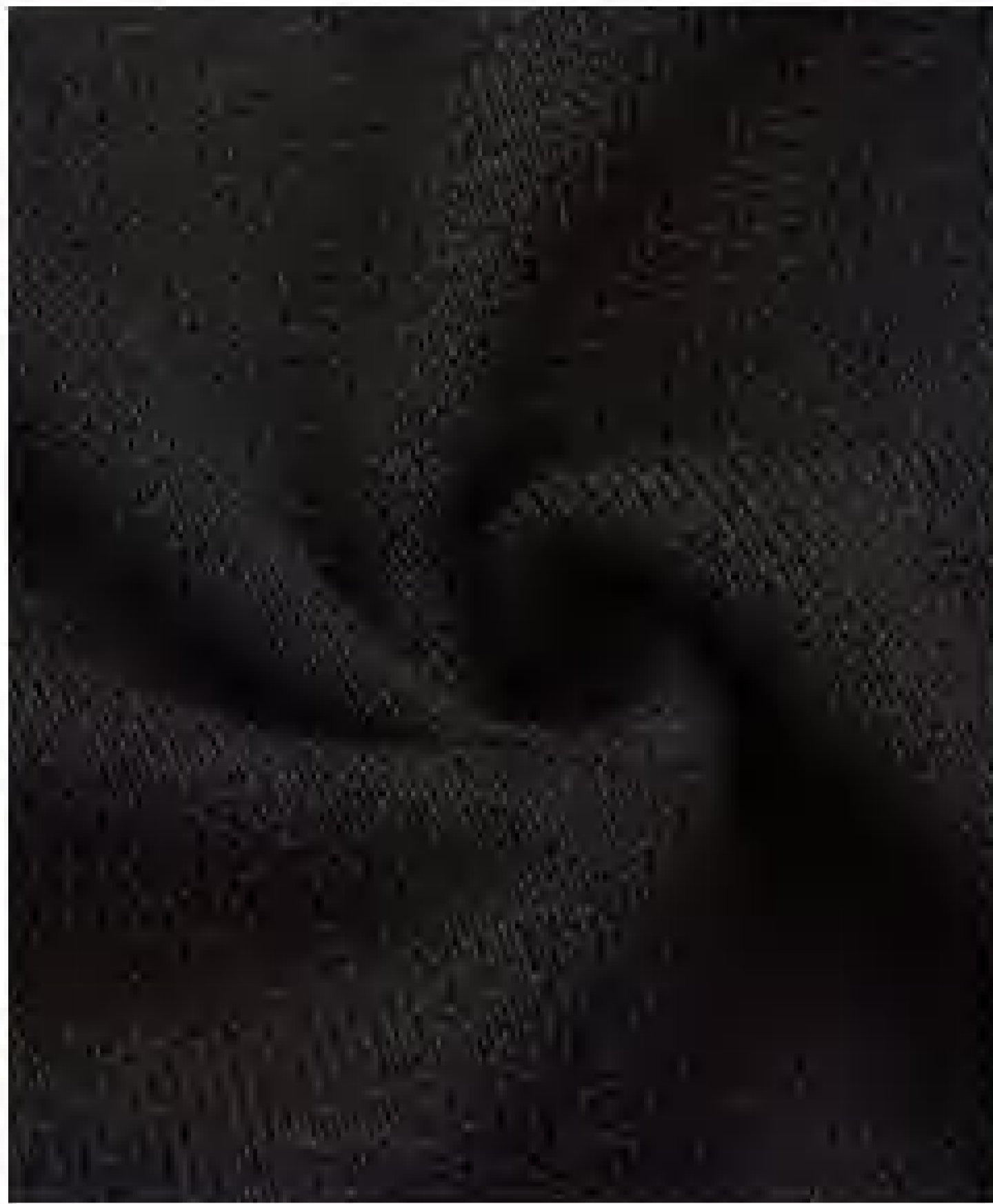
White	Light Pink 210C	Red 186C
Offwhite	Pink 211C	Dark Red 7420C
Light Purple 2577C	Hot Pink 225C	Crimson red 207C
Purple 268C	Rose red 227C	Wine red 202C
Dark Purple 2112C	Coral red 178C	Burgundy 209C
Slate Purple 669C	Ruby Red 1797C	Maroon 504C

Apple Green 381C	Powder Blue 2905C	Process Blue C
Green Yellow 374C	Light Blue 2128C	Light Royal Blue 2386C
Dark Green 7736C	Sky Blue 2171C	Vivid Blue 2196C
Dark Olive Green 7734C	Teal 7711C	Lake Blue 301C
Green 7733C	Steel Blue 646C	Royal Blue 7687C
Bean Green 7730C	Fresh Blue 653C	Dark Cyan 2189C

Light Yellow 129C	Dark Yellow 117C	Khaki 7502C
Yellow 3514C	Vegas Gold 4515C	Tan Brown 7504C
Gold yellow 1235C	Mustard Gold 111C	Brown 7582C
Orange 1505C	Dark Gold 456C	Peru Brown 7517C
Orange Red 166C	Gold Enrod 7407C	Saddle Brown 1545C
Burnt Orange 2436C	Olive Yellow 7767C	Yellow Brown 871C

Deep Blue 2747C	Cool Grey 5C	Lime Green 368C
Blue 286C	Light Grey 4276C	Midnight Teal 5473C
Dark Royal Blue 288C	Bluish Grey 444C	Dark Grey Marle
Light Navy 289C	Dark Silver 423C	Grey Marle
Navy 533C	Medium Grey 430C	
Black 426C	Dark Grey 2336C	

**370gsm 65% COTTON 35% POLYESTER**



**Show  
Detail**

# FAQ

## Sample

***Can I get a physical sample before placing order?***

*Yes, you can place a sample order or you can order one of our stock for quality checking;*

***Can I get free sample?***

*sample cost will be refunded from bulk order.*

## Order requirement

***Can customized hang tags/wash labels be provided?***

*Full customization is supported. You can add brand logos, ingredient labels, and care instructions.*

***Does the minimum order quantity include mixed colors and sizes?***

*Yes! The MOQ just 50 pieces, and you can mix different sizes.*

***Can we customize our stripe pattern style?***

*Yes. We have blank template for you to design your stripe pattern.*

***Can i order more light weight or heavy weight fabric?***

*Yes. We can customize the fabric according to your requirement. 370gsm is regular fabric weight. Other fabric weight need longer production time.*

***Can you use my size chart instead of your size chart?***

*Yes. You can use your own size chart*

## Design

***I have my own design, can factory help us?***

*Yes, we can use your design apply to our size/pattern set-up;*

***Can factory help us as we just have design idea?***

*Yes, We have designer to help you to design mock up for your approval.*

## Logo

***Can i apply embroidered Logos?***

*Yes. You can apply Logos by embroidery, print or embroidery patch different way.*