

江苏森迈地板科技有限公司

地址：江苏省常州市武进区横林镇崔卫路3号、5号

Jiangsu Senmai floor Technology Co., Ltd

Address: No.3 and No.5, Cuiwei Road, Henglin Town, Wujin District, Changzhou City, Jiangsu Province

<http://www.senmaifloor.com/>

SENMAI

森迈架空地板

防静电地板 | 防静电通风地板 | 网络地板

 **森迈地板**[®]
SENMAI FLOOR

目录

- 02-03 公司简介
Company profile
- 04-05 发展历程
Development history
- 06-07 品牌实力
Brand strength
- 08-09 资质证书
Qualification certificate
专利证书
Patent certificate
- 10-11 产品性能
Product performance

Calcium sulfate floor 森迈硫酸钙地板

- 12-15 硫酸钙防静电地板
Calcium Sulphate Anti-static Access Floor
- 16-19 硫酸钙网络地板
Calcium Sulphate Network Access Floor

GRC floor 森迈GRC地板

- 20-23 GRC无机质水泥网络地板
GRC Network Access Floor
水泥网络地板
Cement Network Access Floor
- 24-25 GRC六面全包网络地板
GRC six-sided all-inclusive network floor
GRC无机质水泥网络地板（底面贴镀锌板）
GRC inorganic cement network floor
(underside with galvanized sheet)

Aluminum floor 森迈铝合金地板

- 26-27 铝合金防静电地板
Aluminum Anti-static Access Floor
- 28-29 铝合金防静电通风地板
Aluminum Anti-static Air Flow Access Floor
- 30-31 铸铝蜂窝通风地板
Aluminum Grate Anti-static Access Floor

All-steel floor 森迈全钢地板

- 32-33 全钢陶瓷面防静电地板
All Steel Anti-static Access Floor With Ceramic Covering
- 34-35 全钢有边防静电地板
All Steel Anti-static Access Floor With Edge Trims
全钢无边防静电地板
All Steel Anti-static Access Floor Without Edge Trims
- 36-37 全钢防静电通风地板 PVC/HPL
All Steel Anti-static Air Flow Access Floor (PVC/HPL Covering)
全钢陶瓷防静电通风地板
All Steel Anti-static Air Flow Access Floor With Ceramic Covering
- 38-39 OA 网络地板
OA Network Access Floor
- 40-41 OA500网络地板
OA500 Network Access Floor
OA600网络地板
OA600 Network Access Floor
- 42-43 玻璃地板
Glass Access Floor

Accessories 配件及辅料

- 44-45 吸盘
Panel Lifter
出线盒
Outlet Box
地插座
Ground Socket
横梁
Stringer
- 46-47 支架
Pedestal
- 48-49 地面装饰贴面
Covering
- 50-51 施工处理与使用
Construction treatment and instructions
使用说明
Use Instructions
- 52-55 工程案例
Engineering Case

森迈地板 Senmai Flooring

森迈地板“业精于勤，行成于思”的企业精神，竭诚为广大客户提供优质的产品和技术服务；

With the enterprise spirit of "industry is refined by diligence, action is made by thinking", Senmai Flooring is dedicated to providing quality products and technical services to our customers;

森迈地板—秉承“极致品质，贴心服务”的品牌理念稳步发展，积极拓宽市场，良好的质量与贴心的服务是森迈地板生存及发展的基础，客户的认可与支持是我们发展的动力；

Senmai flooring—adhering to the "Ultimate quality, intimate service" brand concept of steady development, actively expand the market, good quality and intimate service is the foundation of the survival and development of SENMAI flooring, customer recognition and support is the driving force of our development;

森迈地板—17年专注于架空地板的智造与研发，高端的设备，精湛的工艺，精心的管理，打造精致的产品，为地面架空系统提供一站式解决方案。

Senmai flooring—17 years focus on the development of intelligent and high-end flooring, high-end equipment, superb technology, careful management, to create exquisite products for the ground overhead system to provide a one-stop solution.



Senmai Concept

企业愿景：百年企业 / 百年品牌

Enterprise vision: century enterprise / century brand

SENMAI ACCESS FLOOR

森迈地板 创造美好生活

CREATE A BETTER LIFE

江苏森迈地板科技有限公司是一家研发、制造各类架空地板及相关附属配套产品的专业性厂家，主打硫酸钙地板，其生产的产品有：硫酸钙防静电地板、硫酸钙网络地板，GRC无机质水泥地板、水泥地板，全钢防静电地板、通风地板、铝合金架空地板、木芯复合架空地板、OA网络地板等系列产品，是中国防静电架空地板行业领域产品品质处于领先的公司。

Jiangsu Senmai floor Technology Co., Ltd. is a professional manufacturer of R&D and manufacturing of all kinds of raised floor and related auxiliary products, with the main product of calcium sulfate floor, Its products include: calcium sulfate anti-static floor, calcium sulfate network floor, all steel anti-static floor, ventilation floor, aluminum alloy overhead floor, wood core composite overhead floor, GRC inorganic cement floor, OA network floor and other series of products. It is a leading company in the field of anti-static overhead floor industry in China.

DEVELOPMENT HISTORY

发展历程

1998.11

常州市八达机房设备工程有限公司在地板之乡—常州横林镇成立，以高端品质正式进入架空地板市场领域，成为屈指可数的架空地板生产厂家之一。

Changzhou Bada Computer Room Equipment Engineering Co., Ltd. is founded in 1998, located in Henglin Town, that the capital of laminate flooring in China. The factory has entered the field of access floor market with high quality products, becoming one of the manufacturers of access floor.

2002.10

八达机房在深圳设立了办事处，作为公司了解国际市场行情、把握国内市场脉搏的窗口，同时作为八达机房向客户提供更完善架空地板解决方案的有力保障。

The Bada factory set up an agency in Shenzhen, which explore the international market and the market trend. At the same time, we can provide a more perfect access floor solutions to customers.

2005.8

八达机房通过国际ISO9001:2008质量管理体系认证和ISO14001:2008环境管理体系认证，提高产品质量上具备了更加科学规范的管理体系保障；同时增强了公司在市场的竞争力，提升客户服务、树立品牌形象，提供更加有力的保障。

The Bada factory has passed the international quality management system certification (ISO 9001:2008) and environmental management system certification (ISO 14001:2008), so that product quality has a more scientific and standardized management system. Meanwhile, it enhances the market competitiveness, improve customer service and brand image.

2007.10

“科技兴企、自主创新”是八达机房不断进步的第一推动力；依靠科技创新，不断开发具有自主知识产权的防静电地板新产品，产品的开发、推广成功进一步稳固了“森迈”防静电地板的发展基石，提高了森迈防静电地板的知名度和美誉度。

"Science and technology enterprises, independent innovation" is the first driving that keep us going. Relying on scientific and technological innovation, we constantly develop new anti-static floor products with independent intellectual property rights. The successful development and promotion of the product further stabilized the development cornerstone of "Senmai" anti-static access floor, and improved the popularity and reputation of Senmai floor.



2008.12

森迈携手影视巨星李晨出任森迈地板形象代言人。

Senmai signed film star Li Chen as Senmai floor image spokesman.

2011

相继在北京、上海、广州、成都等地设立营销中心，标志着在中国的销售布局发展进入了一个新的历史阶段。

Our company establishes the marketing centers in Beijing, Shanghai, Guangzhou and Chengdu, which marks a new historical stage in the development of sales distribution in China.

2015年

森迈地板在深圳前海股权交易中心挂牌，对森迈的具有里程碑的意义，有利于运用资本的力量对森迈的发展进行更深一步的变革。

Senmai floor is listed in Qianhai equity trading center in Shenzhen, this is a milestone to the development of Senmai company, and it is conducive to the further reform of the development of the company by using the power of capital.



2018年

再次扩建硫酸钙地板自动化生产车间10万平米，并全面完成试投产，当年签下深圳恒邦伟业、上海金桥5G产业园两大项目，森迈架空地板为中国中高端写字楼、机房工程项目服务！

We expanded the automatic production workshop to 100,000 square meters in order to produce calcium sulfate access floor, and the trial production was completed. In the same year, we signed two projects of Shenzhen Hengbang weiyue and Shanghai Jinjiao 5G industrial park. Senmai access floor provide project service for Chinese high-end office buildings and computer rooms.

1998

2000.6

常州市八达机房设备工程有限公司参与中国移动北京数据中心机房防静电地板项目，以品质卓越，结构考究的产品理念，掀开了八达机房在中国防静电架空地板行业发展的新纪元。

The Bada factory participated in the anti-static floor project of China mobile Beijing data center, opening a new era for the development of our company in domestic anti-static access floor industry.



2003

八达乘胜追击，以成熟的产品、成熟的技术、成熟的市场，辅以雄厚的资金实力由传统的木质防静电地板地板，扩大到全钢防静电地板、全钢网络地板等新系列产品的生产，逐步完善系列架空活动地板的品种，为客户的选择提供了更多的选择，使八达机房公司一举打开了局面，产值利税连年快速增长，成为防静电地板企业十大生产厂家之一。

The Bada factory expand the product types from wood core access floor to anti static steel access floor and steel network floor with mature products, technology and market, supplemented by strong capital strength. Gradually improve the raised floor varieties, which more choices provides to customers.

2006.9

借助工厂实力 注册高端“森迈”防静电品牌 片片灵犀·传承未来。

To registered high-end "Senmai" with the strength of the factory. Each piece inherit the future.



2008.6

公司先后获得中国著名品牌与中国品牌500强证书，使森迈的品牌知名度与美誉度急速提升。

The company has been awarded "Chinese famous brand" and top 500 China brands certificates, which fully exalt the brand popularity.



2009.9

在华南片区深圳正式设立营销公司深圳市龙泰投资发展发展有限公司，竭诚的为华南区提供专业、便捷的一站式服务。

Shenzhen Longtai investment and development co., LTD., is a trading company, was established in Shenzhen (south China area), in order to provide professional and convenient one-stop service for south China.

2012

原有的厂房产能已满足不了客户的需求，森迈公司斥资2000多万购买30万平方的工业用地，投资6000余万建设现代化一流的厂房，经过一年多的辛苦建设，于2013年10月搬入新厂房，同时森迈地板销售业绩大幅增长，公司庞大的国内营销和服务体系更加完善。

The capacity of old plant can no longer meet the customers' requirements. Senmai invested more than 20 million RMB Yuan to purchase 300,000 square meters of industrial land and spend more than 60 million RMB Yuan to build modern workshop. We moved to the new plant in October 2013 in a year. The sales performance of Senmai floor increased the same year, and the domestic marketing and service system is more perfect.

2017年

为了森迈的壮大和发展，成立了江苏森迈地板科技有限公司，注册资金：6580万。本公司拥有了雄厚的产品自主研发能力和技术创新能力，在雄厚的资金保障下，通过引进国际最先进的生产设备技术，进行消化、吸收、再创新，使公司拥有强大的核心竞争能力。同时，通过自主知识产权的创新产品，广开销路，实现科学发展，向着企业更高的目标阔步前进！

We set up Jiangsu Senmai flooring technology co., LTD. with 65.8 million registered capital, in order to further expand and develop. The company has strong autonomy of the product research and development capabilities and technological innovation capabilities. Due to the strong financial security, we introduce the international production equipment and technology, after to digest, absorb and recreate the technologies introduced. So that the company has a strong core competitiveness. At the same time, our company innovate products, wide market, scientific development, toward a higher goal of enterprise strides forward.

2022年

森迈架空地板系统的独创性和先进技术，以及广大客户对森迈地板的信任，将他们拥有的各个知名项目交由森迈地板来执行完成，诸如政府机关、金融证券、广播电视、交通运输、电子仪器、制造业等行业。其高品质的质量、高性能的技术参数和赏心悦目的外观得到了架空地板行业和建筑界的认可和赞许，森迈公司的知名度与市场份额都取得了迅速的提升。森迈公司2022年的营业额突破1.5亿元，生产总产值达到2亿元。

The originality and advanced technology of senmai overhead floor system, as well as the trust of customers to Senmai floor, will have their various well-known projects to be completed by Senmai floor, such as government agencies, financial securities, radio and television, transportation, electronic equipment, manufacturing industries and other industries. Its high-quality, high-performance technical parameters and pleasing appearance have been recognized and praised by the overhead floor industry and the construction industry. In 2022, the turnover of senmai company exceeded 150 million yuan, and the total output value reached 200 million yuan.

SCIENTIFIC RESEARCH 潜心科研

森迈引进先进的网络地板全自动生产线，年产量可达200万平方米。

以独具技术创新敏感的管理层为驱动，以具有三十年地板研发经验的专业技术人员团队为基础，在制造设备整合方面，具有高精度的制造要求和特殊工艺，主要设备根据技术标准的持续升级而不断改造生产线的先进水准。森迈地板已实现地板制造自动化、信息化。精细化三管齐下，打造行业智造标杆。

The introduction of advanced network floor automatic production line, the annual output of up to 200 million square meters.

Driven by a uniquely innovative and sensitive management, and based on a team of professional technicians with 30 years of experience in floor research and development, with high-precision manufacturing requirements and special processes in terms of manufacturing equipment integration, the main equipment in accordance with the technical standards of continuous upgrading and continuous transformation of the advanced level of the production line. Senmai flooring has realized floor manufacturing automation, information. Fine three-pronged approach to create a smart benchmark industry.



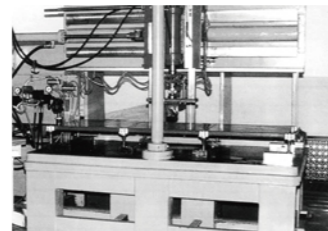
检测器具 塞尺
Testing instruments feeler



盐雾测试
Salt spray test



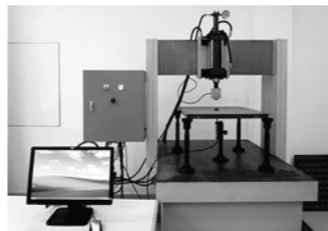
平整度测试
Flatness test



滚动荷载测试
Rolling load test



沙袋冲击测试
Sandbags impact



集中荷载测试
Concentrated load test



浆料搅拌机
Plup mixer



维卡仪器
Vicat apparatus



万用调节电炉
Universal regulating furnace

BRAND STRENGTH 品牌实力

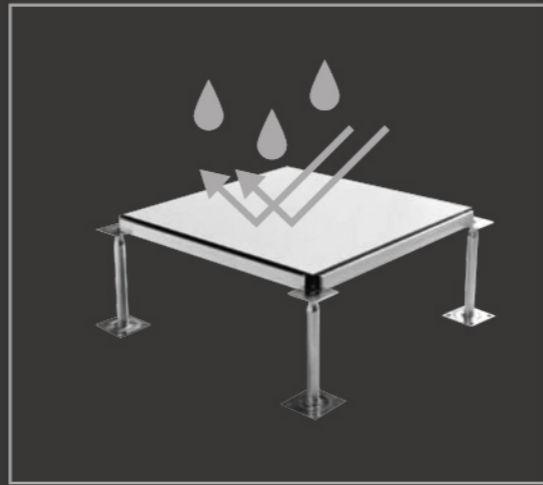
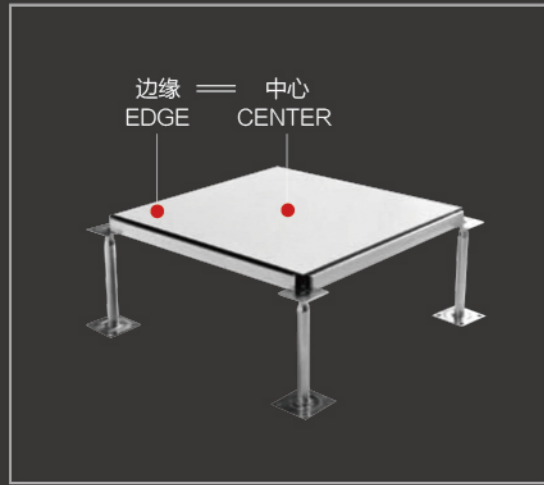
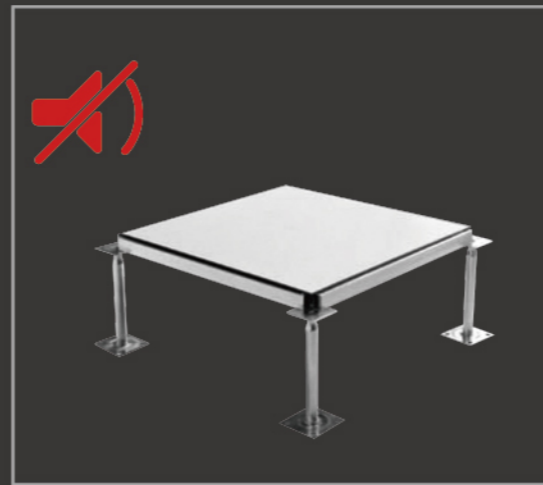
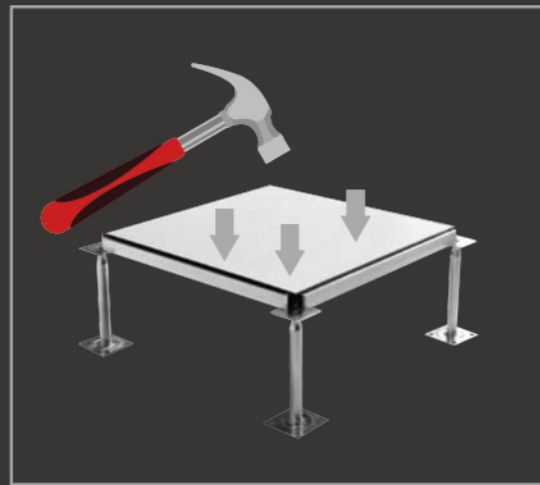
森迈工业园占地20万平方米，拥有一大批国际专业科研、生产、销售和服务人才。森迈拥有实力雄厚的战略伙伴，与世界上游厂商建立长期合作关系，原材料绿色、环保，符合欧洲环保标准。

Covering an area of 200000 square meters, Senmai Industrial Park has a large number of international professional scientific research, production, sales and service talents. With strong strategic partners, we have established long-term cooperation with upstream manufacturers in the world. Raw materials are green and environmentally friendly, meeting European environmental standards.

CALCIUM SULFATE ANTI-STATIC FLOOR

PRODUCT PERFORMANCE

产品性能



防火、绝热、不燃

硫酸钙地板因其材质特点，具有防火、绝热和不燃等性能，能有效阻滞火灾的迅速蔓延及不产生对人体有害气体，成为新一代防静电架空地板基材。

Because of its material characteristics, calcium sulfate floor has the properties of fire prevention, heat insulation and non combustion, which can effectively block the rapid spread of fire and do not produce harmful gases to human body, and become the new generation of anti-static overhead floor base material.

高物理机械性能

公司生产的硫酸钙地板基材采用高强石膏粉为原料，产品已达到国际先进水平，并通过CE认证。

The company produces calcium sulfate floor substrate using high-strength gypsum powder as raw materials, products have reached the international advanced level, and passed the CE certification.

隔音

硫酸钙材质与纤维的结合先天具备隔振功能，可有效减少振动或撞击源对建筑结构(如楼板)的撞击，可以降低撞击声，从而起到隔音效果。

The combination of calcium sulfate material and fiber has the function of vibration isolation, which can effectively reduce the impact of vibration or impact source on the building structure (such as floor), reduce the impact sound, and thus play a sound insulation effect.

集中负荷

公司生产的硫酸钙活动地板，边载强度和中心点载荷同样出色，有效解决了因受力不均造成地板翘边的现象。

The edge load capacity is same as centre load capacity, effectively solved the phenomenon that should force unequally to cause floor warping edge.

环保材料

公司致力于可持续性产品的研发和应用，回收率高达85%，产品使用寿命长。本公司采用的硫酸钙芯板为100%可回收材料，来源于永续性原料，胶水也是水溶性的。

The company is committed to the R&D and application of sustainable products, with a recovery rate of up to 85% and a long service life. The calcium sulfate core board adopted by the company is 100% recyclable material, which comes from the sustainable raw material, and the glue is also water-soluble.

防水性能

公司的硫酸钙地板，无论是板芯、贴面材料还是粘合性胶水，整体形成后都具有优良的防水性能，无论是瞬间浸泡，还是缓慢水湿，经过处理后都不会形成板体的变形，和贴面等辅助材料的起皱脱胶。

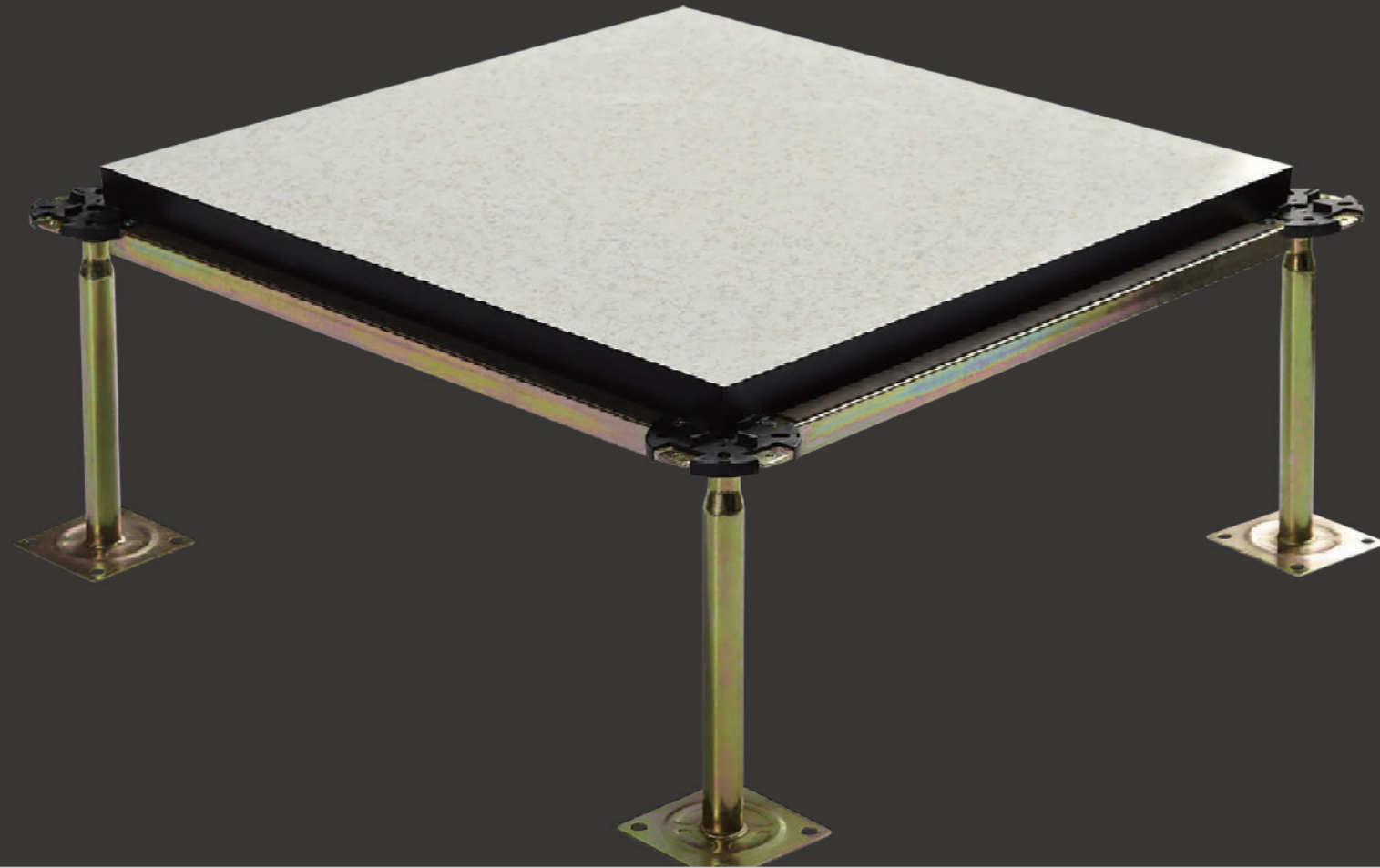
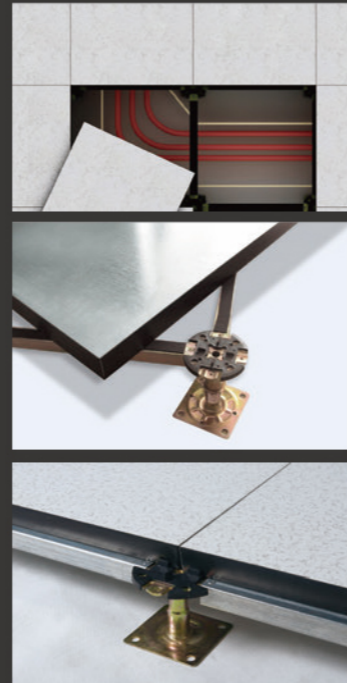
The calcium sulfate board of the company has excellent waterproof performance after being formed as a whole, no matter it is the core, veneer material and adhesive glue. No matter it is soaked in the instant or wet slowly, it will not form the deformation of the board body and the wrinkling and degumming of auxiliary materials such as veneer after being treated.

CALCIUM SULPHATE ANTI-STATIC ACCESS FLOOR

硫酸钙防静电地板

硫酸钙防静电地板采用无毒未经漂白的植物纤维作为加固材料，结合凝固成的硫酸钙晶体，并经过脉冲压制工序制作而成。地板表面采用HPL三聚氰胺、PVC、瓷砖、地毯、大理石或天然橡胶等贴面，地板四周塑胶收边条，地板底部采用镀锌钢板。因其环保、防火、高强度、平整等诸多方面优势，已成为架空地板家族中最为广泛使用的材料。

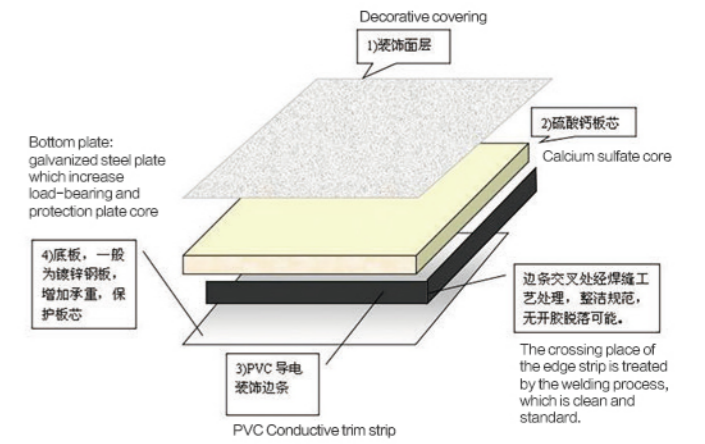
Calcium sulfate anti-static floor is made of non-toxic unbleached plant fiber as reinforcement material, combined with solidified calcium sulfate crystal, and through pulse pressing process. The floor surface adopts HPL melamine, PVC, ceramic tile, carpet, marble or natural rubber and other veneers, the plastic edge strip around the floor, and the galvanized steel plate is used at the bottom of the floor.



Functional Features 功能特点

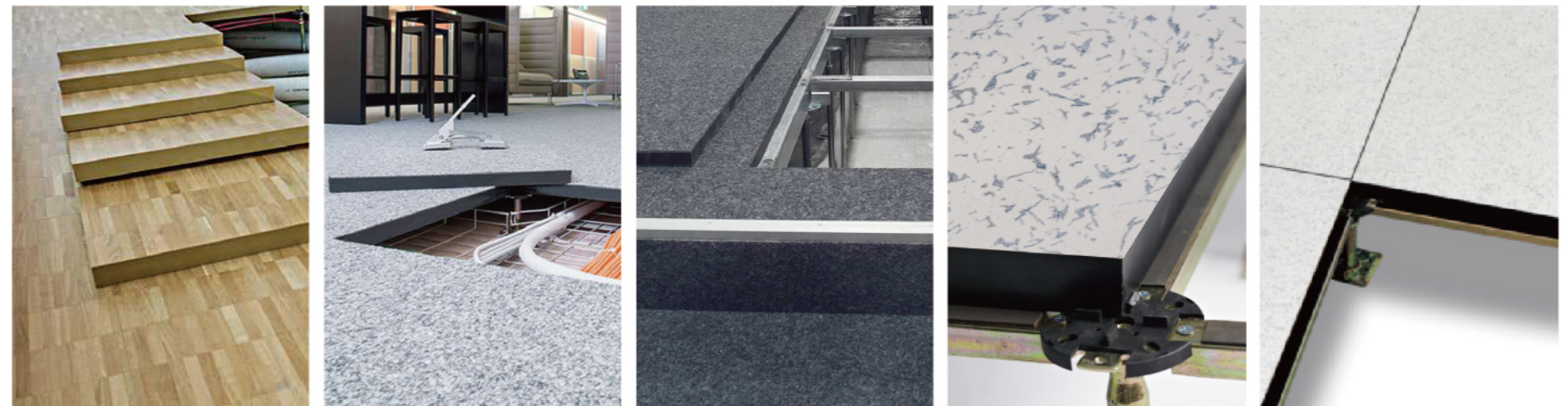
- 1、基材采用纯天然高强石膏粉为原料，强度已达到国际标准；
- 2、四周支撑，结构性强，超强承重耐压；
- 3、表面耐磨性能好，不起泡、不脱胶；
- 4、阻燃、防滑、隔音、防尘、抗污、耐化学腐蚀；
- 5、高档环保美观，装饰效果好，安装简便，互换性强；
- 6、在变化的湿度和温度中很稳定。

- 1.The base material adopts pure natural high-strength gypsum powder as raw material, and the strength has reached the international standard;
2. All around support, strong structure, super load-bearing and pressure resistant;
3. Good surface wear resistance, no foaming, no degumming;
4. Flame retardant, antiskid, soundproof, dustproof, antifouling and chemical corrosion resistant;
5. High grade environmental protection, good decoration effect, simple installation and strong interchangeability;
6. Stable in varying humidity and temperature.



可以配合不同的贴面，来满足客户不同的需求

Use different covering materials to meet different customers' requirements.



木纹面
Wood texture panel

大理石面
Marble covering

地毯面
Carpet covering

陶瓷面
Ceramic covering

HPL面
HPL covering



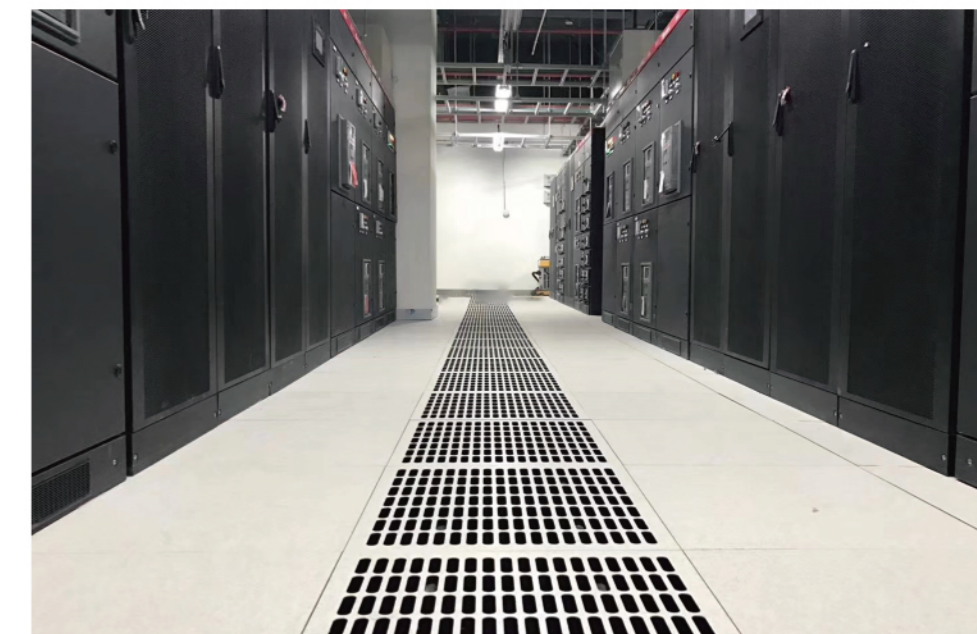
CALCIUM SULPHATE ANTI-STATIC ACCESS FLOOR

硫酸钙防静电地板

Product Application 产品应用

硫酸钙地板广泛的应用于防静电要求、承载要求、铺设要求、铺装效果要求很高档的场合，如银行、电信机房、移动机房、智能化办公室、高档机房、部队指挥中心。

Calcium sulfate floor is widely used in anti-static requirements, load-bearing requirements, laying requirements, pavement effect requirements are very high-grade occasions, such as banks, telecom - munications room, mobile room, intelligent office, high-grade room, military command center.



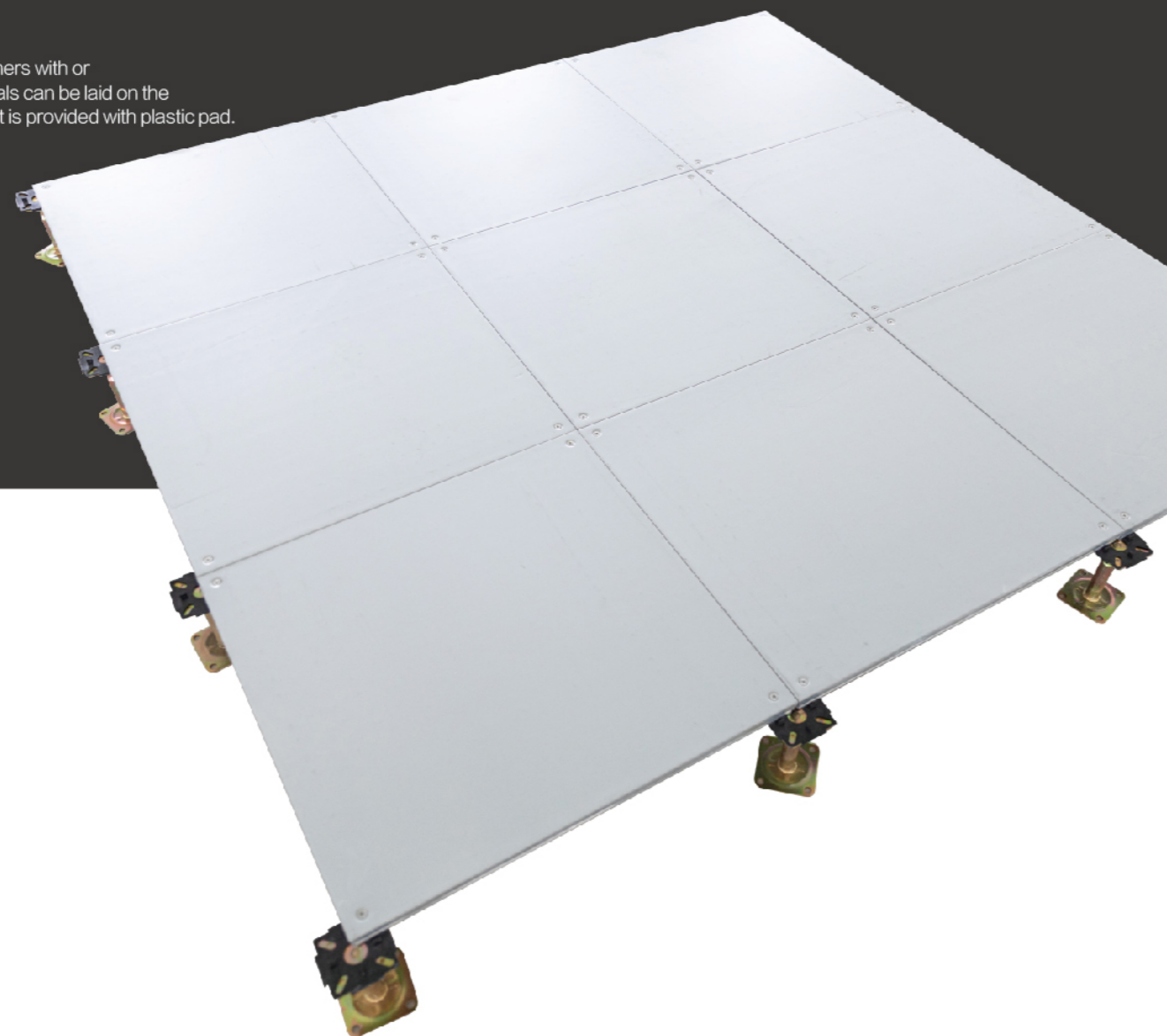
硫酸钙防静电地板技术参数							
型号 Type	规格 Spec (mm)	集中负荷 Concentrated Load		均布荷载 / m ² Uniform Load	挠度 (mm) Deflection	系统电阻 / Ω System resistance	防火性能 Fire Resistance
		N	KG				
SM-W-1000	600*600*32	≥ 4450	≥ 453	≥ 23000	≤ 2.0mm	导电型 1.0*10 ⁴ ~1.0*10 ⁶ 耗散型 1.0*10 ⁹ ~1.0*10 ¹⁰	不燃 A 级 (A2)
SM-W-1250	600*600*32	≥ 5560	≥ 567	≥ 33000	≤ 2.0mm		

CALCIUM SULPHATE NETWORK ACCESS FLOOR

硫酸钙网络地板

优质硫酸钙基，四角带或不带角锁孔，表面可铺设地毯、PVC或其他材料，支架模压成型，上托带塑胶垫，完成面高度为70mm—1500mm，可采用横梁四周支撑式结构或支架四角支撑式结构。

High quality calcium sulphate base material, four corners with or without corner lock hole, carpet, PVC or other materials can be laid on the surface, the bracket is molded, and the upper bracket is provided with plastic pad.



Functional Features 功能特点

- 1、六面包镀锌钢，密封性能好，防水；
- 2、硫酸钙结晶，整体强度高，耐高温、耐燃烧；
- 3、支架高度可以调节，组装灵活，布线量大，互换性好；
- 4、表面可铺设各种贴面，美观大方；
- 5、重复利用率高，拆装方便，节约成本，使用寿命长。

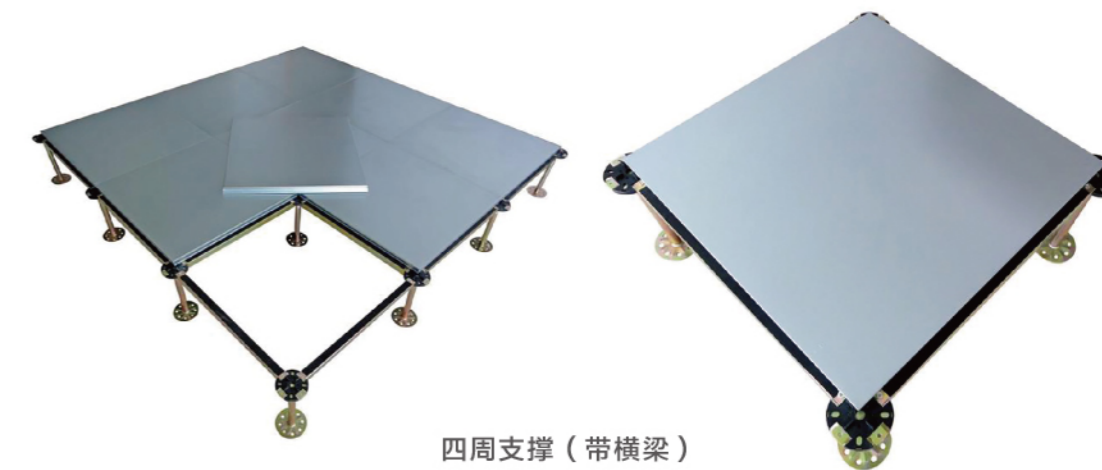
1. Galvanized steel plate encased calcium Sulphate Panel, good sealing performance, waterproof;
2. Calcium sulfate crystal, high overall strength, high temperature resistance, combustion resistance;
3. Adjustable pedestal height, flexible assembly, large amount of wiring, good interchangeability;
4. The surface can be paved with various veneers, beautiful and generous;
5. The utility model has the advantages of high reuse rate, convenient disassembly, cost saving and long service life.

Supports 支撑

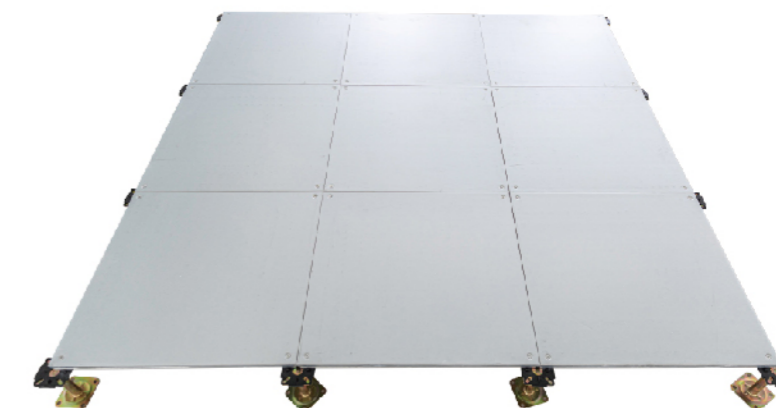
四角支撑，支架高度可调
Four corner support, adjustable bracket height

Configuration 配备

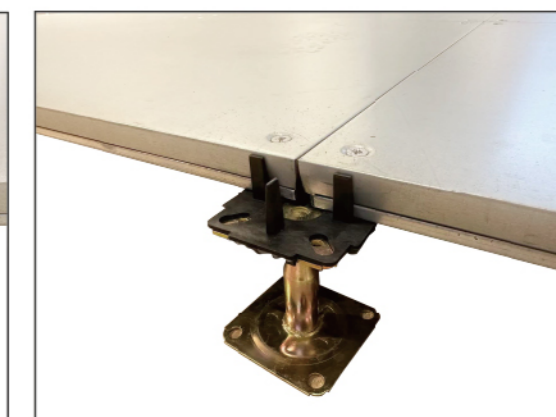
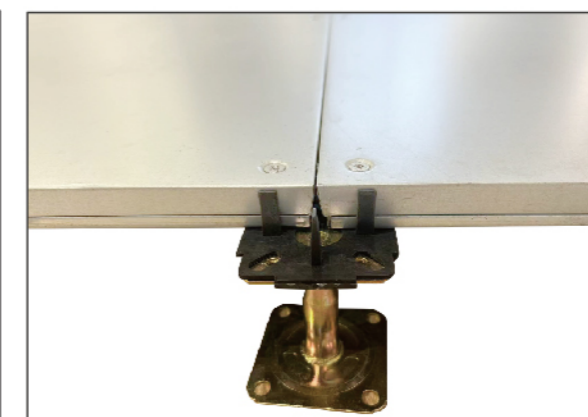
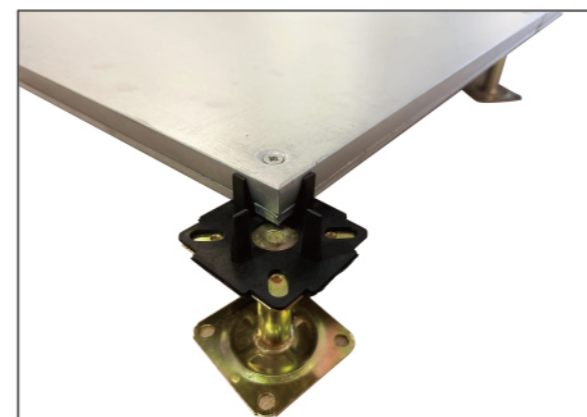
最终地面材料采用方块地毯、卷毯、或PVC贴面、实木地板
Decorative materials used square carpet, rolled blanket or PVC covering and wooden floor.



四周支撑（带横梁）



支撑系统PVC缓冲垫片采用“PVC垫专利”，筋条加高，地板之间避免摩擦撞击，比传统PVC垫隔音效果更好。





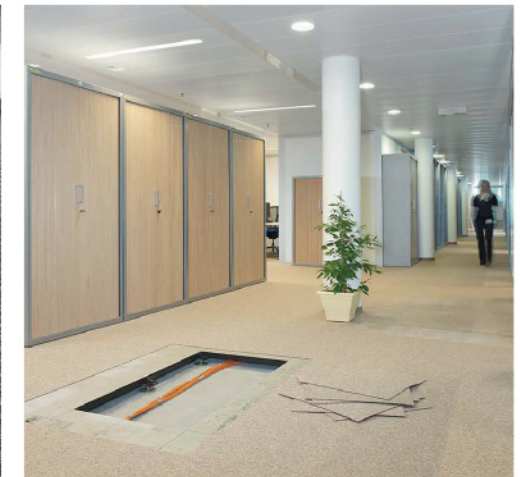
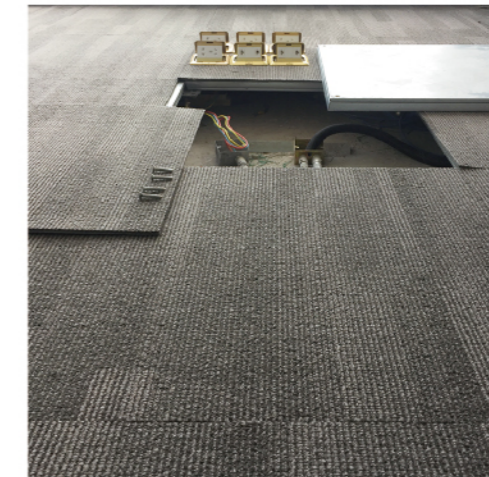
CALCIUM SULPHATE NETWORK ACCESS FLOOR

硫酸钙网络地板

Product Application 产品应用

5A写字楼，智能化办公场所，是目前最流行的一款高档架空地板。

5A office building, intelligent office space, is the most popular high-grade raised floor.



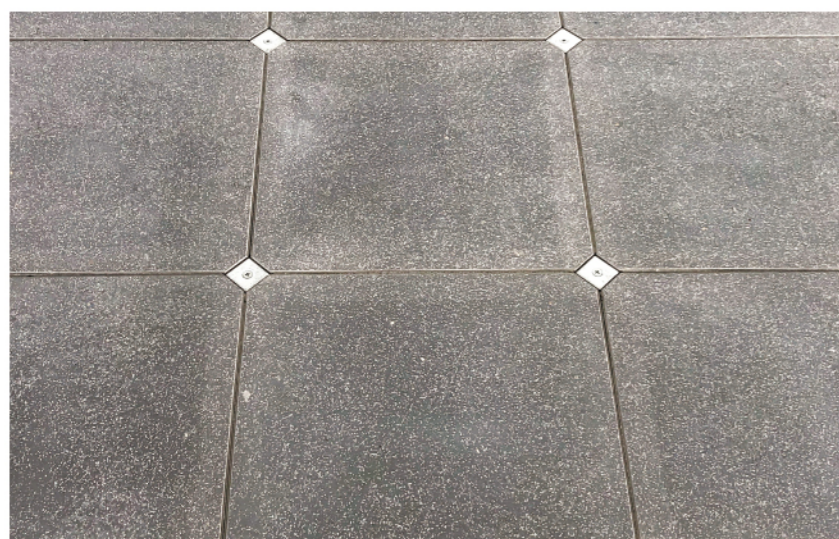
硫酸钙网络地板技术参数							
型号 Type	规格 Spec (mm)	集中负荷 Concentrated Load		均布荷载 / m ² Uniform Load	挠度 (mm) Deflection	系统电阻 / Ω System resistance	防火性能 Fire Resistance
		N	KG	N	(mm)		
SM-W-800	600*600*26	≥ 3550	≥ 360	≥ 16100	≤ 2.0mm	---	国家A1级: 不燃
SM-W-1000	600*600*30	≥ 4450	≥ 453	≥ 23000	≤ 2.0mm	---	

GRC NETWORK ACCESS FLOOR

GRC无机质水泥网络地板

无机质网络地板是由硅酸盐、无机纤维、矿物纤维、石英砂等材料经过高压一次成型的环保地板。地板四角镀锌底座支撑，不带横梁系统。森迈专利技术四角斜切，四块板组合成一个正方形，用正方形铁制螺母固定，专利技术相比于传统技术锁定性更好，更稳定。

Inorganic network flooring is an environmentally friendly flooring made of silicate, inorganic fiber, mineral fiber, quartz sand and other materials that are formed in a single process under high pressure. The flooring is supported by galvanized base at all four corners without cross beam system. Sammai patented technology four corners bevel cut, four boards combined into a square, fixed with square iron nuts, patented technology compared to the traditional technology locking better, more stable.



本产品由我公司从韩国引进技术结合国内用户的需求，改良了传统型地板的缺点后研发出来的一次成型新一代绿色环保网络地板，该地板无任何挥发性有毒物质及辐射、可以完全被分解、中心荷载在挠度2mm时大于300公斤，使用年限与楼宇相同，该地板使用本公司专利结构安装。

This product is developed by our company after introducing technology from South Korea combined with the needs of domestic users and improving the shortcomings of the traditional type flooring, a new generation of green environmental protection network flooring is formed in one go, the floor is free of any volatile toxic substances and radiation, can be completely decomposed, the central load is greater than 300 kg at a disturbance of 2 mm, and the service life is the same as that of the building, the floor is installed using our patented structure.



Product mix 产品结构

无机质网络地板是由硅酸盐、无机纤维、矿物纤维、石英砂等材料经过高压一次成型的环保地板。

地板四角镀锌底座支撑，不带横梁系统。我司专利技术为四角斜切，四块板组合成一个正方形，用正方形铁制螺母固定。

支撑头上配有圆形缓冲定位橡胶垫，防止地板受力后颤动引起的响声。支架高度可调 ±25mm。

Inorganic network flooring is an environmentally friendly flooring made of silicate, inorganic fiber, mineral fiber, quartz sand and other materials that are formed in a single process under high pressure.

The flooring is supported by galvanized base at all four corners without cross beam system. Our patented technology is beveled at all four corners, and the four boards are combined into a square and fixed with square iron nuts.

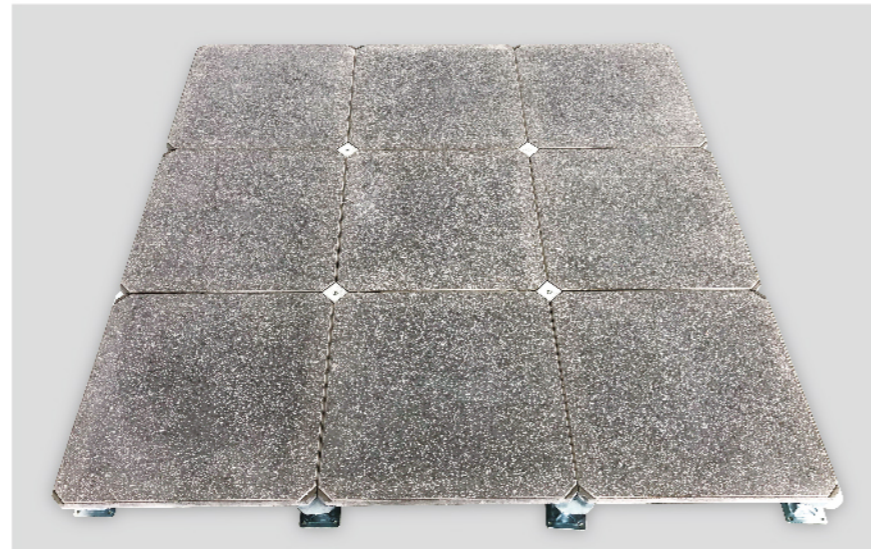
The support head is equipped with a round cushion positioning rubber pad to prevent the floor from shaking after the force caused by the sound. The height of the brace is adjustable ±25mm.



Functional Features 功能特点

- 1、防火、防水、承载力大、寿命长。
- 2、无机质硅酸盐有相当好的阻隔热效果，是不燃烧固体。当地板一面加以600℃的火焰强度传递至另一面需要1H的时间。有足够的时间来逃生或抢救财产。
- 3、无机质硅酸盐具有不溶于水的特点，若出现漏水等情况该地板在完全被泡在水里的情况下仍不影响地板质量，完全可以使用。
- 4、无机质地板经过测试在挠度2mm时，承载能力可达到350KG，而国标（钢板厚度0.8mm*0.8mm）钢质网络地板也只能达到300KG。
- 5、无机质网络地板主材与大楼主材类似，所以其使用寿命与建筑物等同。

- 1、Fireproof, waterproof, high bearing capacity and long life.
- 2、Inorganic silicate has quite good heat barrier effect and is non-combustible solid. When one side of the floor plus 600 °C flame intensity transfer to the other side takes 1H time. There is enough time to escape or salvage property.
- 3、Inorganic quality silicate has the characteristic of insoluble in water, if there is a leak and other situations this floor in the case of completely soaked in water still does not affect the quality of the floor, completely can be used.
- 4、Inorganic flooring is tested in the deflection of 2mm, the bearing capacity can reach 350KG, while the national standard (steel plate thickness 0.8mm*0.8mm) steel network flooring can only reach 300KG.
- 5、The main material of inorganic network flooring is similar to the main material of the building, so its service life is equal to that of the building.



Performance 性能

- 1、无机质网络地板安装后平整度高，无发软的感觉，其表面铺设材料可用强化地板、PVC、方块地毯等，而普通钢质网络地板表面只能铺设方块地毯。
- 2、无机质网络地板表面与内在使用同质材料，不怕硬物、金属物体在表面划、磨，一旦出现损伤可随时修复，故该地板适合交叉施工。
- 3、无机质网络在铺装时切割边不会有生锈、腐蚀的现象出现，该地板适应海洋性环境和有暖气片的房间内使用。

- 1、Inorganic network flooring has high flatness after installation, no soft feeling, its surface laying materials can be used for laminate flooring, PVC, square carpet, etc., while the surface of ordinary steel network flooring can only be laid square carpet.
- 2、Inorganic network flooring surface and the inner use of homogeneous materials, not afraid of hard objects, metal objects in the surface scratching, grinding, once the damage can be repaired at any time, so the floor is suitable for cross-construction.
- 3、The inorganic quality network will not have the phenomenon of rust and corrosion when cutting the edge when laying, and the floor is adapted to the marine environment and the room with heater.



GRC无机质水泥网络地板技术参数							
型号 Type	规格 Spec (mm)	集中负荷 Concentrated Load		均布荷载 / m ² Uniform Load	挠度 (mm) Deflection	系统电阻 / Ω System resistance	防火性能 Fire Resistance
		N	KG	N	(mm)		
SM-W-700	500*500*26	≥ 2950	≥ 300	≥ 12500	≤ 2.0mm	---	国家 A 级, 不燃

GRC SIX-SIDED ALL-INCLUSIVE NETWORK FLOOR

GRC 六面全包网络地板



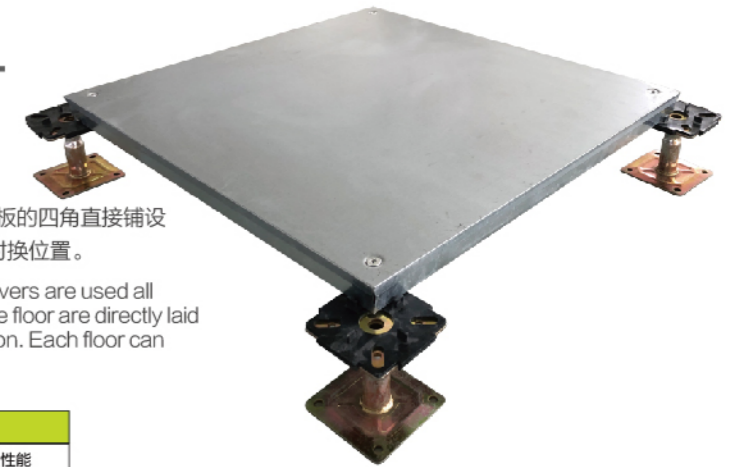
GRC SIX-SIDED ALL-INCLUSIVE NETWORK FLOOR

GRC 六面全包网络地板

Product mix 产品结构

采用优质GRC无机质水泥地板为基材，基材上下四周均采用优质镀锌板封面，系统为四角支承式，即地板的四角直接铺设在支撑上的安装方式，主要有地板块、支撑、缓冲垫等组成。每块地板均能移动自如，可以和其他板块对换位置。

High-quality GRC inorganic cement floor is used as the base material, high-quality galvanized sheet covers are used all around the base material, and the system is a four-corner supporting type, that is, the four corners of the floor are directly laid on the supporting installation, mainly has the floor plate, the support, the buffer pad and so on composition. Each floor can move freely, and can be replaced with other plates.



GRC六面全包网络地板技术参数							
型号 Type	规格 Spec (mm)	集中负荷 Concentrated Load		均布荷载 / m ² Uniform Load	挠度 (mm) Deflection	系统电阻 / Ω System resistance	防火性能 Fire Resistance
		N	KG	N	(mm)		
SM-W-800	500*500*26	≥ 3550	≥ 363	≥ 16103	≤ 2.0mm	---	国家 A 1 级: 不燃

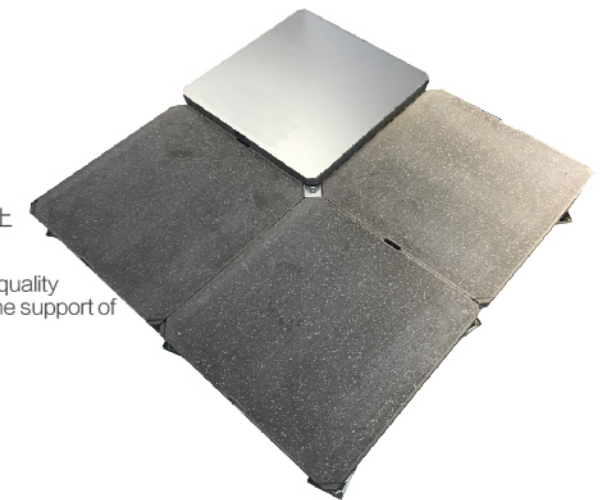
GRC INORGANIC CEMENT NETWORK FLOOR (UNDERSIDE WITH GALVANIZED SHEET)

GRC无机质水泥网络地板（底面贴镀锌板）

Product mix 产品结构

采用优质GRC无机质水泥地板为基材，基材底面贴优质镀锌板，系统为四角支承式，即地板的四角直接铺设在支撑上的安装方式，主要有地板块、支撑、缓冲垫等组成。

The high quality GRC inorganic cement floor is used as the base material, and the base material is pasted with high quality galvanized sheet. The system is a four-corner support type, that is, the four corners of the floor are directly laid on the support of the installation mode, which is mainly composed of ground plate, support, cushion and so on.



GRC无机质水泥网络地板（底面贴镀锌板）技术参数							
型号 Type	规格 Spec (mm)	集中负荷 Concentrated Load		均布荷载 / m ² Uniform Load	挠度 (mm) Deflection	系统电阻 / Ω System resistance	防火性能 Fire Resistance
		N	KG	N	(mm)		
HDW.P.D	500*500*26	≥ 3550	≥ 363	≥ 16103	≤ 2.0mm	---	国家 A 1 级: 不燃



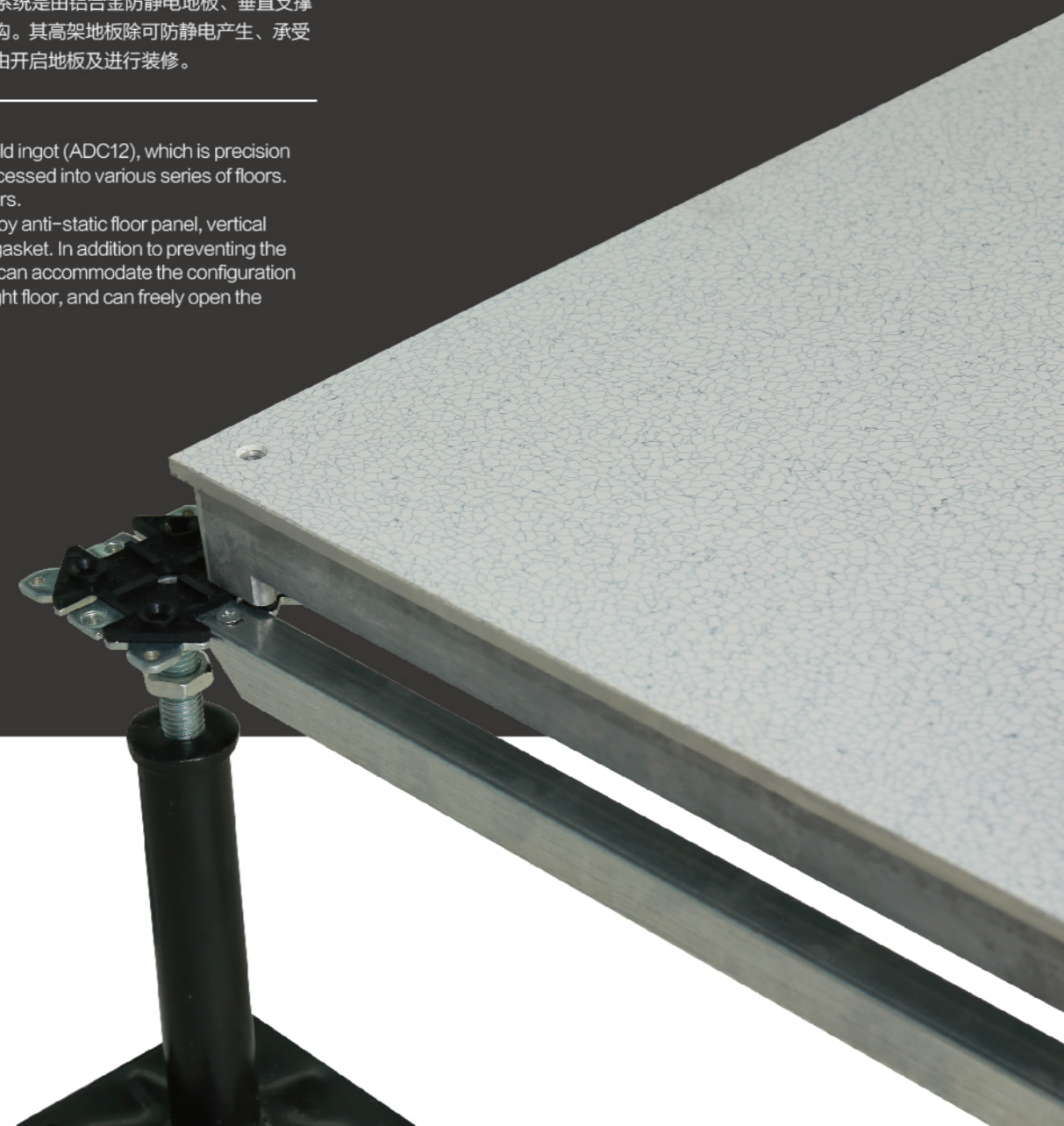
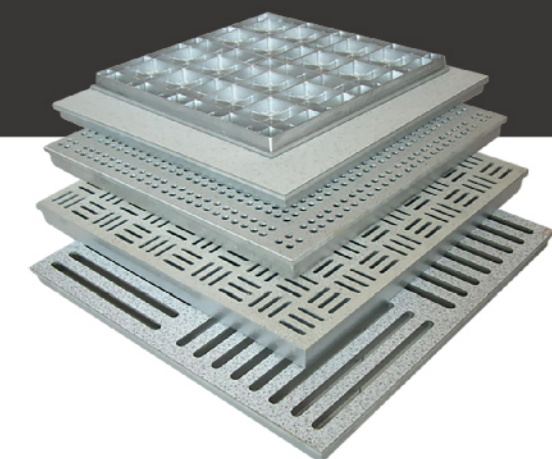
ALUMINUM ANTI-STATIC ACCESS FLOOR

铝合金防静电地板

铝合金防静电地板系铝合金锭(ADC12)经精密铸造成型，融合采用高负载结构设计，再加工制成各系列地板，面层粘贴HPL、防静电地砖或其他面层覆盖物。高架地板系统是由铝合金防静电地板、垂直支撑基座、横向牵引桁梁、消音垫片组合而成整体稳定性较强高架结构。其高架地板除可防静电产生、承受荷重外，完成高度地板中层可容纳配置电缆、空调、管路并可自由开启地板及进行装修。

The aluminum alloy anti-static floor is made of aluminum alloy gold ingot (ADC12), which is precision casted, integrated with high-load structure design, and then processed into various series of floors. The covering can use HPL, conductive electrostatic brick or others.

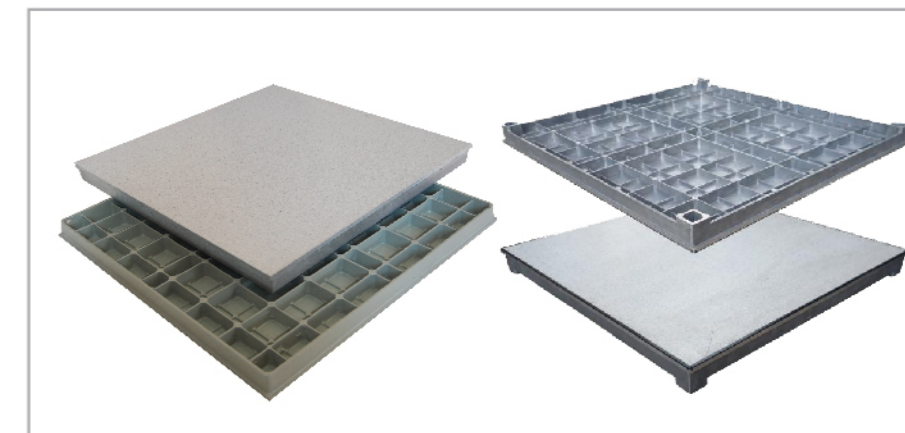
Access floor system is a high stability structure with aluminum alloy anti-static floor panel, vertical support base, transverse pull stringer, and sound-absorbing gasket. In addition to preventing the generation of static electricity and bearing loads, the raised floor can accommodate the configuration of cables, air conditioners and pipes in the middle floor of the height floor, and can freely open the floor and carry out decoration.



Functional Features 功能特点

- 1、地板构件标准，尺寸精准度高，易施工及互换性好；
- 2、高负载结构设计，架设高度可调整；
- 3、PVC贴面高耐磨，有效解决贴面断裂，翘起等问题；
- 4、面板颜色、材质，功能性可根据需求选配；
- 5、防潮、防锈、防火、耐用，再循环长期使用地材。

1. Floor component standard, high precision, easy construction and good interchangeability;
2. High load structure design, Finish floor height can be adjusted;
3. PVC covering is high wear resistance which effectively solve the fracture, warping and other problems;
4. Customer can choose panel color, material and function according to the requirements;
5. Moisture proof. Rust - proof, fire - proof, durable, recycle long - term used floor material.



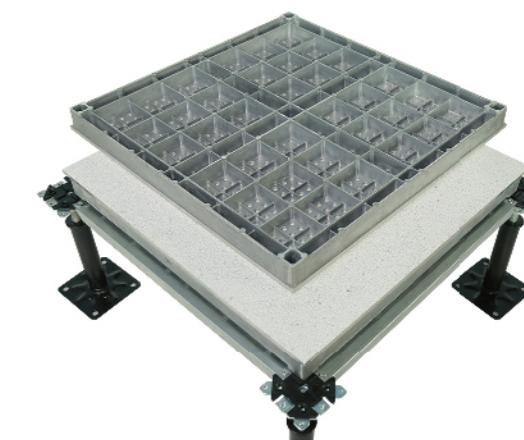
Product Application 产品应用

铝合金地板是主要运用于对室内净化要求高的各类厂房及制造车间，其本体为铝合金制，其有着轻便且受压强度高特性，这使得其运用于各类电子、芯片制造、半导体及医药行业，其净化的能力一直是这类领域所注重的，是这类净化高要求区域的首选地板。

Aluminum alloy floor is mainly used in all kinds of factories and workshops with high requirements for indoor purification. Its body is made of aluminum alloy, which has the characteristics of lightness and high compressive strength, this makes it used in a variety of electronics, chip manufacturing, semiconductor and pharmaceutical industries, its purification capacity has been the focus of such areas, is the preferred purification of high-demand areas of the floor.



铝合金防静电地板技术参数					
型号 Type	规格 Spec (mm)	集中载荷 Concentrated Load	均布载荷 N/m ² Uniform Load	极限载荷 Ultimate load	静电阻值 Static resistance
SM-L-500	600*600*55	500kg	1000kg	1000kg	10 ⁴⁻¹⁰ Ω
SM-L-700	600*600*55	700kg	1400kg	1400kg	10 ⁴⁻¹⁰ Ω
SM-L-800	600*600*55	800kg	1600kg	1600kg	10 ⁴⁻¹⁰ Ω
SM-L-1000	600*600*55	1000kg	2000kg	2000kg	10 ⁴⁻¹⁰ Ω
SM-L-1250	600*600*55	1250kg	2500kg	2500kg	10 ⁴⁻¹⁰ Ω



ALUMINUM ANTI-STATIC AIR FLOW ACCESS FLOOR

铝合金防静电通风地板

铝合金防静电通风地板系铝合金锭(ADC12)经精密铸造成型，融合采用高负载结构设计，再加工制成各系列地板，面层粘贴HPL、防静电地砖或其他面层覆盖物。高架地板系统是由铝合金防静电地板、垂直支撑基座、横向牵引桁梁、消音垫片组合而成整体稳定性较强高架结构。其高架地板除可防静电产生、承受荷重外，完成高度地板中层可容纳配置电缆、空调、管路并可自由开启地板及进行装修。

Aluminum alloy anti-static air flow access floor is made of aluminum alloy ingot (ADC12); with precision casting, fusion using high load structure design, and then processed into a series of floors, the covering is HPL, conductive static tile or others. The raised floor system is composed of aluminum alloy anti-static floor panel, vertical pedestal, transverse stringer and gasket. The raised floor can resist static electricity and bear heavy loads, and the middle floor can be equipped with cables, air conditioners and pipelines at full height. The floor can be opened and decorated freely.

Functional Features 功能特点

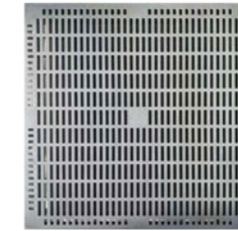
- 1、地板构件标准，尺寸精准度高，易施工及互换性好；
- 2、高负载结构设计，架设高度可调整；
- 3、PVC贴面高耐磨，有效解决贴面断裂，翘起等问题；
- 4、面板颜色、材质，功能性可根据需求选配；
- 5、防潮、防锈、防火、耐用，再循环长期使用材料；
- 6、17%-50%通风率可选，通风性能佳；
- 7、高架铝合金通风地板可用于10级到10万级净化室。

1. Floor component standard, high precision, easy construction and good interchangeability;
2. High load structure design, erection height can be adjusted;
3. high wear resistance of PVC covering, effectively solve the veneer fracture, warping and other problems;
4. Customer can choose panel color, material and function according to the requirements;
5. Moisture proof. Rust - proof, fire - proof, durable, recycle long - term used floor material;
6. good ventilation performance: 15% - 50%;
7. The floor can be used for class 10 to class 100,000 purification rooms.

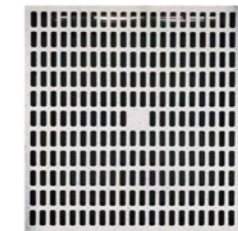
Product Application 产品应用

应用户的需要，森迈铝质出风口板可配合不同的系统，应用于以下不同的地方：生产厂房；实验室；洁净室；测量室；数据中心；影印场；计算机中心。现代的机房及办公室要求有完善的空调制冷系统，森迈地板为整个制冷循环提供最佳的方案。森迈地板出风口置于设备的入风口，直接将冷风有效地送入设备内，对设备进行冷却。

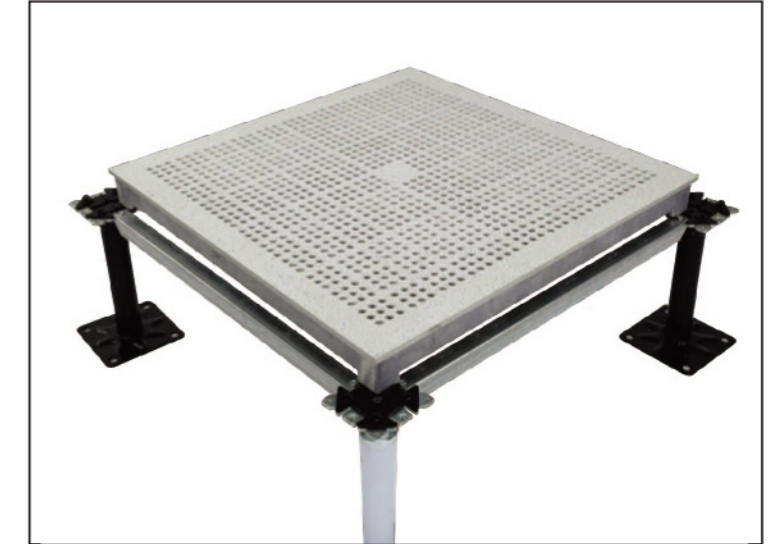
According to the user's requirements, aluminum air flow panel can coordinate the different system, suitable to different occasions: workshop, laboratories, clean room, measuring room, data center, the print factory, computer center. Senmai Floor provide the best solution for the whole refrigeration cycle. The air outlet is placed in the equipment's air inlet, directly feeding the cold air into the equipment and cooling the equipment.



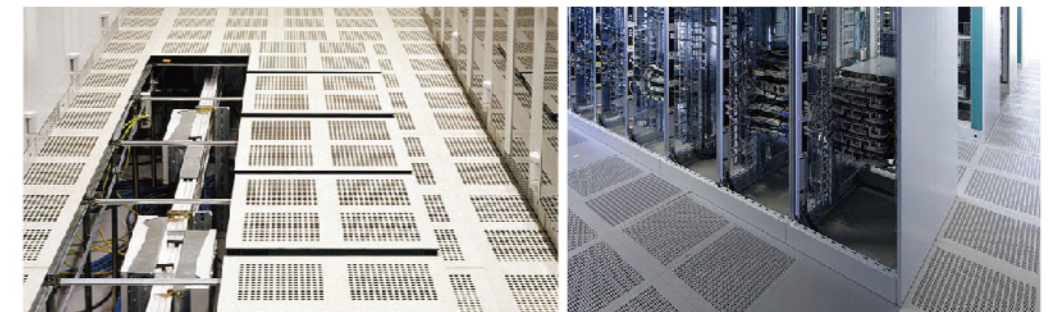
腰孔的1000型 通风率都是50%
VENTILATION COEFFICIENT 50%



条孔的700型 通风率都是50%
VENTILATION COEFFICIENT 50%



以上通风板可根据需要与全钢防静电地板、硫酸钙地板、复合木芯地板配合安装。
The above ventilation panels can be fitted with all steel anti-static floor, calcium sulfate floor and composite wood core floor as required.



铝合金防静电通风地板技术参数

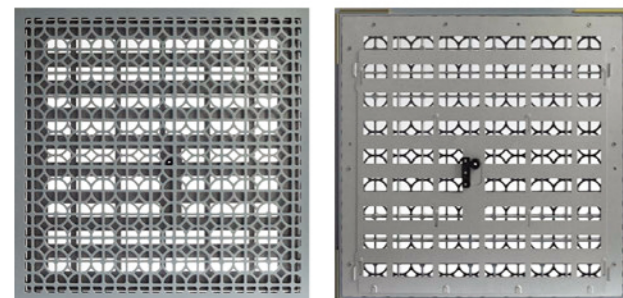
型号 Type	规格 Spec (mm)	集中载荷 Concentrated Load	均布载荷N/m ² Uniform Load	极限载荷 Ultimate load	静电阻值 Static resistance	通风率 Ventilation Coefficient
SM-L-500	600*600*55	500kg	1000kg	1000kg	10 ⁴⁻¹⁰ Ω	17-25%
SM-L-700	600*600*55	700kg	1400kg	1400kg	10 ⁴⁻¹⁰ Ω	17-25%
SM-L-800	600*600*55	800kg	1600kg	1600kg	10 ⁴⁻¹⁰ Ω	17-25%
SM-L-1000	600*600*55	1000kg	2000kg	2000kg	10 ⁴⁻¹⁰ Ω	17-25%
SM-L-1250	600*600*55	1250kg	2500kg	2500kg	10 ⁴⁻¹⁰ Ω	17-25%

ALUMINUM GRATE ANTI-STATIC ACCESS FLOOR

铸铝蜂窝通风地板

铸铝蜂窝通风地板采用高压压铸工艺，铝锭熔化后，经高压压铸机一次性真空压铸成形，融合了铝合金耐腐蚀、高强度的特性，地板表面可根据需要进行环氧喷粉或镀铬电镀，从而表面达到柔光、防腐、耐磨效果。

This floor use high pressure die casting process. Aluminum ingots are melted and formed by high pressure die casting machine in a vacuum. Which integrated the corrosion resistance and high strength of aluminum. The surface can be epoxy powder or chrome electroplating to achieve the effect of soft light, anti-corrosion and wear resistance.



Functional Features 功能特点

- 1、结构坚实，承载能力及过击能力强
- 2、配件齐全，灵活组合性强
- 3、高灵活性；
- 4、易于处理及安装地板物料；
- 5、轻便的地板及系统重量；
- 6、可调校地板的高度（根据客户的需要，可高达1,000mm以上）。

1. Solid structure, strong bearing capacity and over striking capacity
2. Complete accessories, flexible combination
3. High flexibility;
4. Easy to handle and install floor materials;
5. Lightweight floor and system weight;
6. Adjustable floor height (up to 1000mm according to customer's requirement).



铝合金通风地板带风机
ALUMINUM ALLOY VENTILATION FLOOR WITH FAN

Product Application 产品应用

应用户的需要，森迈铝质出风口板可配合不同的系统，应用于以下不同的地方：生产厂房；实验室；洁净室；测量室；数据中心；影印场；计算机中心。现代的机房及办公室要求有完善的空调制冷系统，森迈地板为整个制冷循环提供最佳的方案。森迈地板出风口置于设备的入风口，直接将冷风有效地送入设备内，对设备进行冷却。

According to the user's requirements, aluminum air flow panel can coordinate the different system, suitable to different occasions: workshop, laboratories, clean room, measuring room, data center, the print factory, computer center. Senmai Floor provide the best solution for the whole refrigeration cycle. The air outlet is placed in the equipment's air inlet, directly feeding the cold air into the equipment and cooling the equipment.



ALL STEEL ANTI-STATIC ACCESS FLOOR WITH CERAMIC COVERING

全钢陶瓷面防静电地板

陶瓷面全钢防静电地板底面采用ST14拉伸板，表面选用SPCC硬质钢板，经过拉伸后点焊形成全钢外壳结构，外表再经磷化后进行喷塑处理，内腔填充发泡水泥，地板上表面粘贴陶瓷贴面，四周导电嵌条镀边，支架使用钢板压成型，丝杆高度可任意调节，横梁选用方管制作。

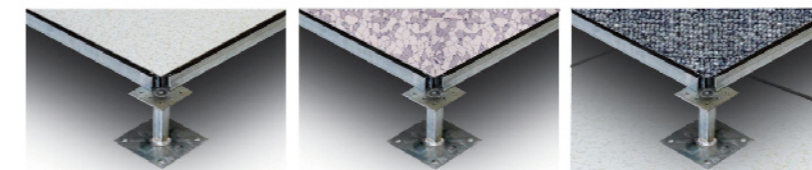
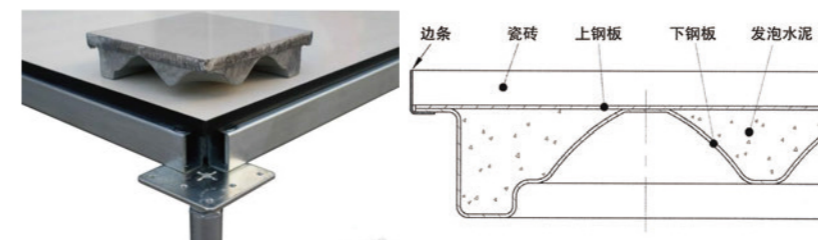
Ceramic covering steel anti-static access floors use ST14 tensile plate, and surface is hard steel sheet (SPCC), spot welding form all steel shell structure, after stretching out and phosphating coating processing, inner filled with foamed cement, stick ceramic covering on top of floor panel. The panels sides encased with conductive plating. The pedestal is pressed with steel plate, the screw height is adjustable. Use side controls as stringers.



Functional Features 功能特点

- 1、全钢陶瓷防静电地板由全钢组成，机械强度高、承载能力强、防火性能好；
- 2、表面静电喷塑，柔光、耐磨、防腐蚀、不开裂；
- 3、耐磨性及防静电性能优良、抗污染、便于清洗、装饰性强，防火性好；
- 4、花色丰富、尺寸精度高、平整性好，耐磨、寿命长，不起尘，易清洁免维护，不需打蜡；
- 5、继承了陶瓷的耐磨和钢板的高承载性能，不易变形；
- 6、瓷砖面彻底杜绝了普通HPL和PVC贴面翘。

1. Made of all-steel, high mechanical strength, strong bearing capacity, good fire performance;
2. Surface electrostatic plastic, soft light, wear - resistant, anti - corrosion, no cracking;
3. Good wear resistance and anti-static performance, anti-pollution, easy to clean, decorative, fire - proof;
4. Rich design and color, high dimensional accuracy, good leveling, wear resistance, long life, not dust, easy to clean maintenance, no need wax;
5. Inherited the ceramic wear resistance and high bearing capacity of steel plate, not easy to deformation;
6. The ceramic tile completely avoid the problem of warpage.



Product Application 产品应用

广泛适用于智能化高档办公楼、5A智能建筑，银行、邮电、石油、电力部门的高档程控机房、计算机房等，完全满足高频率的使用情况并便于清理。

Widely applicable to intelligent high-grade office buildings, 5A intelligent buildings, high-grade programmable computer rooms of banks, posts and telecommunications, oil and power departments, computer rooms, etc., fully meet the high-frequency use and easy to clean up.



全钢陶瓷面防静电地板技术参数							
型号 Type	规格 Spec (mm)	集中负荷 Concentrated Load		均布荷载 / m ² Uniform Load	挠度 (mm) Deflection (mm)	系统电阻 / Ω System resistance	防火性能 Fire Resistance
		N	KG				
SM-G-450	600*600*40/45	≥ 1960	≥ 200	≥ 9720	≤ 2.0mm	防静电 1*10 ⁶ -1*10 ¹⁰	国家 A 级: 不燃
SM-G-680	600*600*40/45	≥ 2950	≥ 301	≥ 12500	≤ 2.0mm		

ALL STEEL ANTI-STATIC ACCESS FLOOR WITH EDGE TRIMS

全钢有边防静电地板

全钢有边防静电地板底面采用ST14拉伸板，表面选用SPCC硬质钢板，经过拉伸后点焊形成全钢外壳结构。外表再经磷化后进行喷塑处理，内腔填充发泡水泥，地板上表面粘贴高耐磨防静电三聚氰胺贴面（HPL），四周镶嵌导电边条，支架使用钢板压成型，丝杆高度可任意调节，横梁选用方管制作。

The steel anti-static access floors with edge trims use ST14 tensile plate, and surface is hard steel sheet (SPCC), spot welding form all steel shell structure, after stretching out and phosphating coating processing, inner filled with foamed cement, stick HPL covering on top of floor panel. The panels sides encased with conductive plating. The pedestal is pressed with steel plate, the screw height is adjustable. Use side controls as stringers.

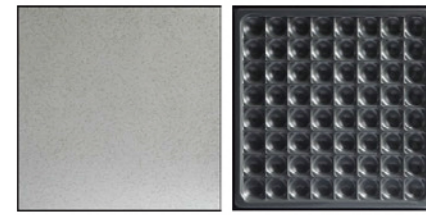


ALL STEEL ANTI-STATIC ACCESS FLOOR WITHOUT EDGE TRIMS

全钢无边防静电地板

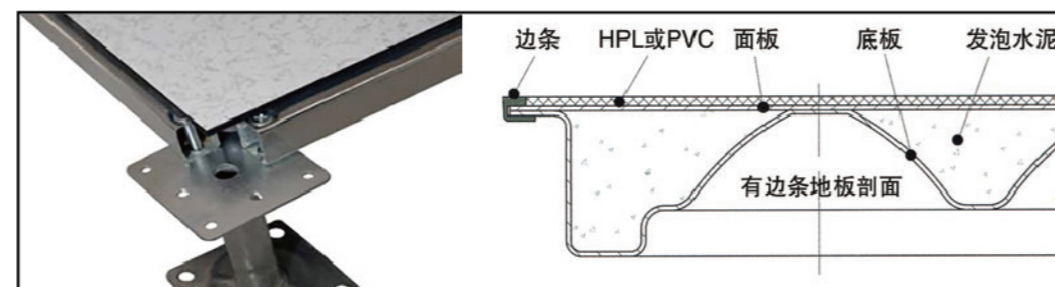
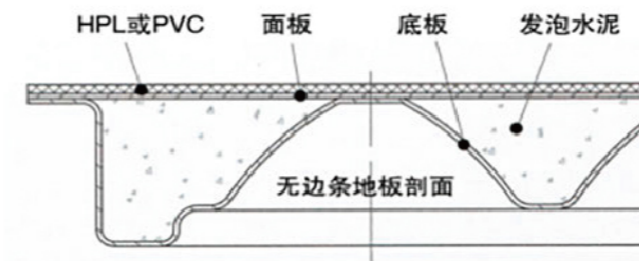
全钢无边防静电地板需选用足够厚度的优质钢板，在冲压和焊接后（64个焊点）进行整形处理，并以高强度发泡水泥填充，使得全钢防静电地板的边角坚硬无比，大大加强地板边沿的承载能力和足够的平整度及装饰性。

All steel anti-static floor needs to select high-quality steel plate of sufficient thickness, after stamping and welding (64 welding points), it is reshaped, and filled with high-strength foam cement, so that the edges and corners of all steel anti-static floor are hard and incomparable, greatly enhancing the bearing capacity, enough flatness and decoration of the floor edges.



三聚氰胺(HPL)贴面-64个蜂窝球形点焊工艺

全钢有边/无边防静电地板技术参数							
型号 Type	规格 Spec (mm)	集中负荷 Concentrated Load		均布载荷 / m ² Uniform Load	挠度 (mm) Deflection	系统电阻 / Ω System resistance	防火性能 Fire Resistance
		N	KG				
SM-G1-450	600*600*35	≥ 1960	≥ 200	≥ 9720	≤ 2.0mm	防静电 1*10 ⁶ ~1*10 ¹⁰	国家 A 级： 不燃
SM-G1-680	600*600*35	≥ 2950	≥ 301	≥ 12500	≤ 2.0mm		
SM-G1-800	600*600*35	≥ 3550	≥ 363	≥ 16100	≤ 2.0mm		
SM-G1-1000	600*600*35	≥ 4450	≥ 453	≥ 23000	≤ 2.0mm		



Product Application 产品应用

因全钢无边防静电地板四周无导电边条，铺装完成后接缝极细，使用于各类高档机房及对防静电有要求的场合。

Due to there is no conductive edging the sides, and the joints are very thin after the pavement, it is used in various high-grade machine rooms and occasions with requirements for anti-static.

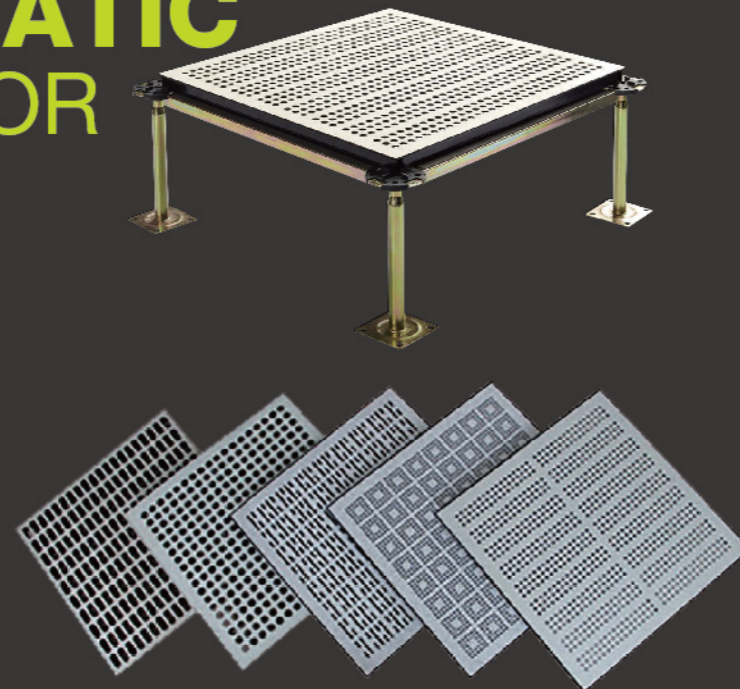


ALL STEEL ANTI-STATIC AIR FLOW ACCESS FLOOR PVC/HPL COVERING

全钢防静电通风地板 PVC/HPL

全钢防静电地板专为数据中心下送风方案配置，作为空调末端的良好解决方案。地板面板采用（进口）碳制材料，并且背衬加厚钢管，具有良好的承载性；大出风量确保设备所需制冷。地板表面可根据用户需求选用HPL或PVC防静电贴面，耐磨防滑，并保持和防静电地板视觉统一。通风率20%-65%可选，另外地板可根据需求加装风量调节器设置出风量，有效提高了机房控温效率。

The all-steel anti-static floor is specially configured the down air supply for the data center as a good solution for the air conditioning terminal. The floor panel is made of (imported) carbon steel and backed with thickened steel tubes for good bearing capacity. Large air output ensures refrigeration of equipment. According to customers' requirements, which can choose HPL or anti-static PVC covering, wear-resistant and anti-static floor visual unity. The ventilation rate is optional from 20% to 65%. In addition, the floor can be equipped with air volume regulator to set the air volume according to the demand, which effectively improves the temperature control efficiency of the machine room.

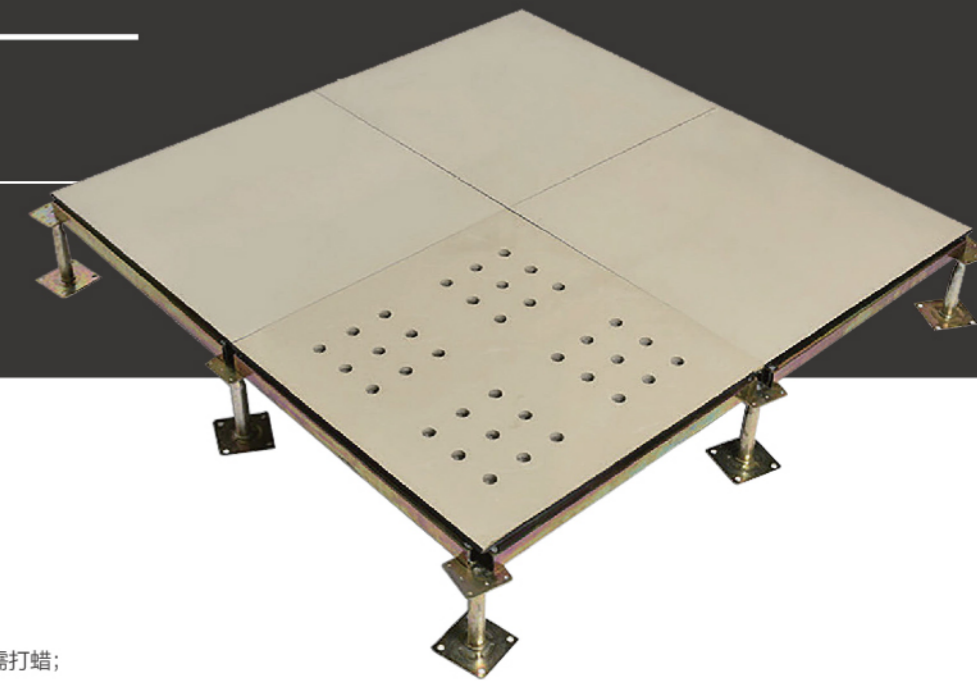


ALL STEEL ANTI-STATIC AIR FLOW ACCESS FLOOR WITH CERAMIC COVERING

全钢陶瓷防静电通风地板

全钢陶瓷防静电通风地板系统由地板、横梁、支架组成。横梁和自身高度可调的支座用螺钉连接成稳固的下部支撑系统，地板镶嵌入横梁围成的方格内。

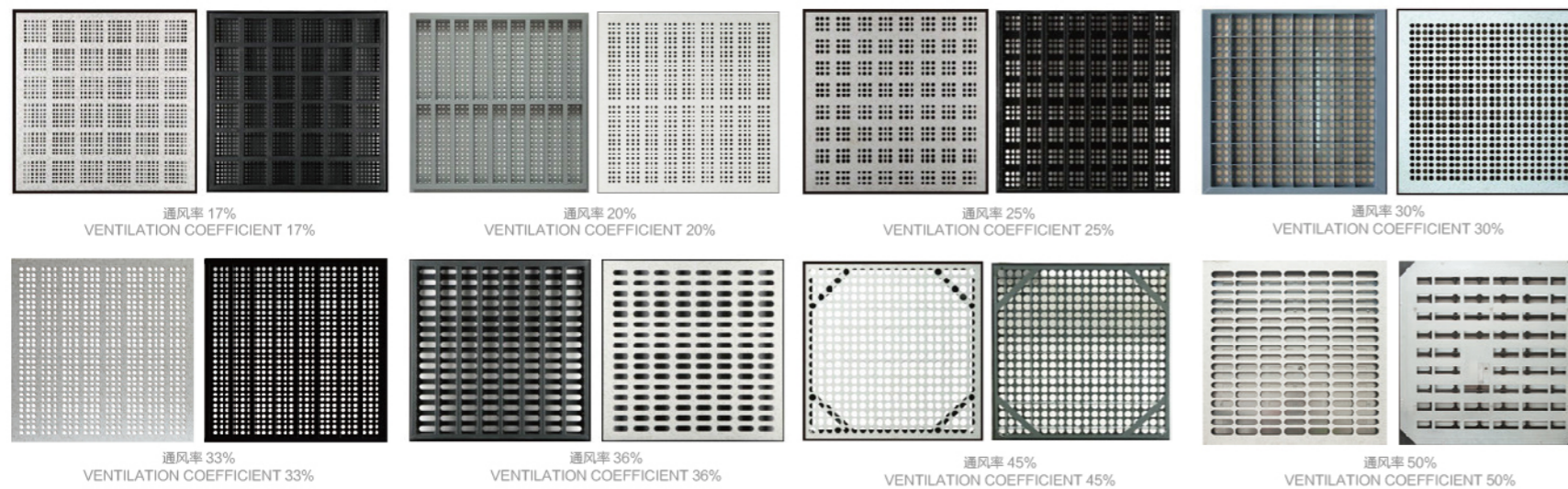
This floor system consists of floor, stringer and pedestal. The stringer and adjustable pedestal are connected with screws to form a stable lower support system, and the floor is inlaid into the square enclosed by the cross beam.



产品选择

规格Size: HDG 600 × 600 × 35mm

贴面Veneer: PVC/HPL

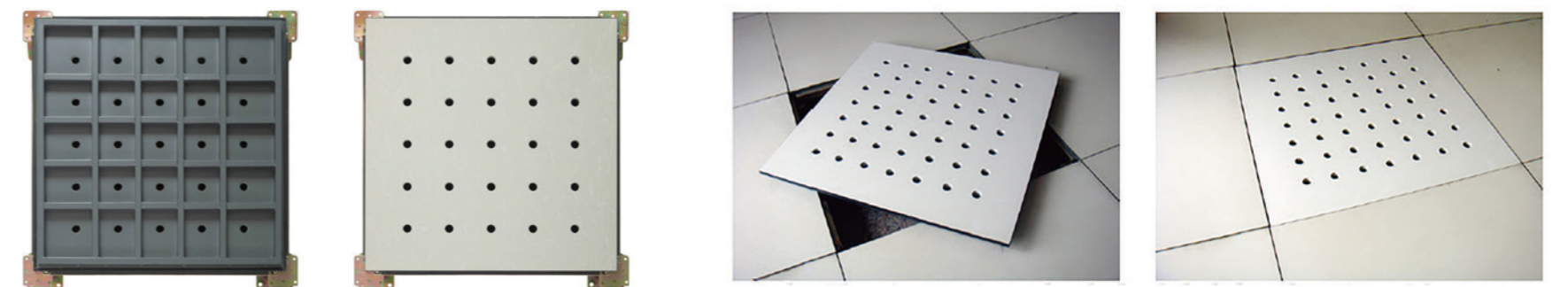


以上通风板可根据需要与全钢防静电地板、硫酸钙地板，高密度复合木地板配合安装。

The above ventilation boards can be installed in coordination with all steel anti-static floor, calcium sulfate floor and high-density composite wood floor as required.

Functional Features 功能特点

- 1、森迈陶瓷防静电通风地板由全钢组成，机械强度高、承载能力强、防火性能好；
- 2、多种通风率可供选择及定制，配沈飞陶瓷防静电地板一起使用，美观大方；
- 3、表面静电喷塑，柔光、耐磨、防腐蚀、不开裂。粘贴的装饰是防静电陶瓷；
- 4、耐磨性及防静电性能优良、抗污染、便于清洗、装饰性强，防火性好；
- 5、花色丰富、尺寸精度高、平整性好，耐磨、寿命长，不起尘，易清洁免维护，不需打蜡；
- 6、继承了陶瓷的耐磨和钢板的高承载性能，防静电瓷砖彻底杜绝了普通HPL和PVC贴面翘起、断裂、不易清理的问题，是一种发展迅速的更新换代产品。

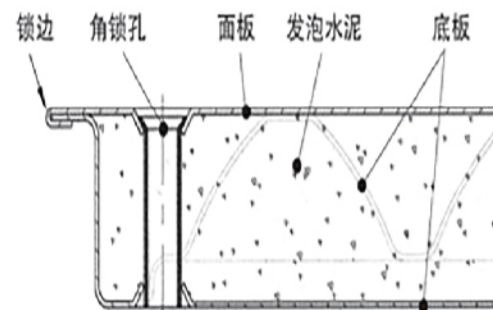
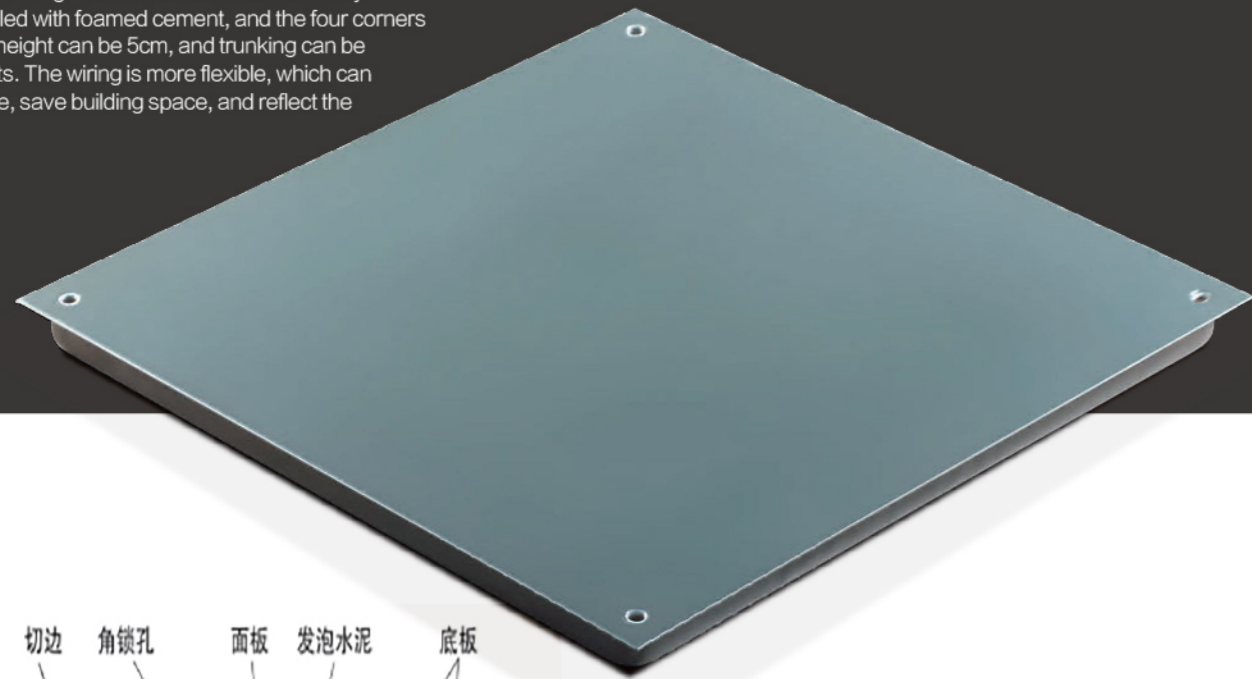


SENMAI OA NETWORK ACCESS FLOOR

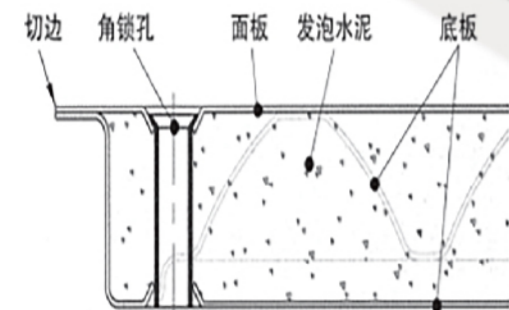
森迈OA网络地板

优质冷轧钢板拉伸后点焊成形，外表经磷化后进行喷塑处理，内腔填充发泡水泥，四角带有角锁孔。最低板面高度可为5cm，地板四周可根据使用要求任意添加线槽，布线更具灵活性，可以将强、弱电分开隔离，便于检修，节约大楼空间，更体现出地板的架空功能性。

High quality cold-rolled steel sheet is spot welded after drawing. The outer surface is treated by spraying plastics after phosphating. The inner cavity is filled with foamed cement, and the four corners are provided with corner keyholes. The minimum board height can be 5cm, and trunking can be added around the floor according to the use requirements. The wiring is more flexible, which can separate strong and weak current, facilitate maintenance, save building space, and reflect the overhead function of the floor.



锁边地板剖面

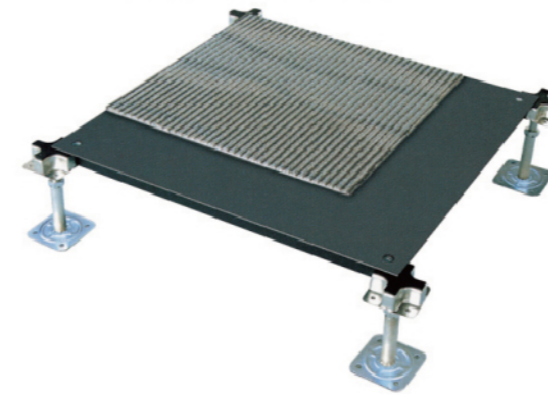


切边地板剖面

Functional Features 功能特点

- 1、全钢组合，模压成型，承载能力强，防火、防腐好。
- 2、模块化设计，互换性能好，组装方便、维修快捷。
- 3、成型的地板带有角锁孔，以确保地板安装的整体稳固。

1. All steel combination, molding, strong bearing capacity, good fire prevention and corrosion protection.
2. Modular design, good interchangeability, convenient assembly and maintenance.
3. The formed floor has corner lock holes to ensure the



Supports 支撑

带角锁四角可调支撑。四块地板共用一个支架。
Four corner lock of adjustable pedestal, four floors panel share a pedestal.

Configuration 配备

最终地面材料采用方块地毯、卷毯、或PVC贴面、实木地板。
The final floor material is square carpet, rolling carpet, or PVC veneer, solid wood floor.

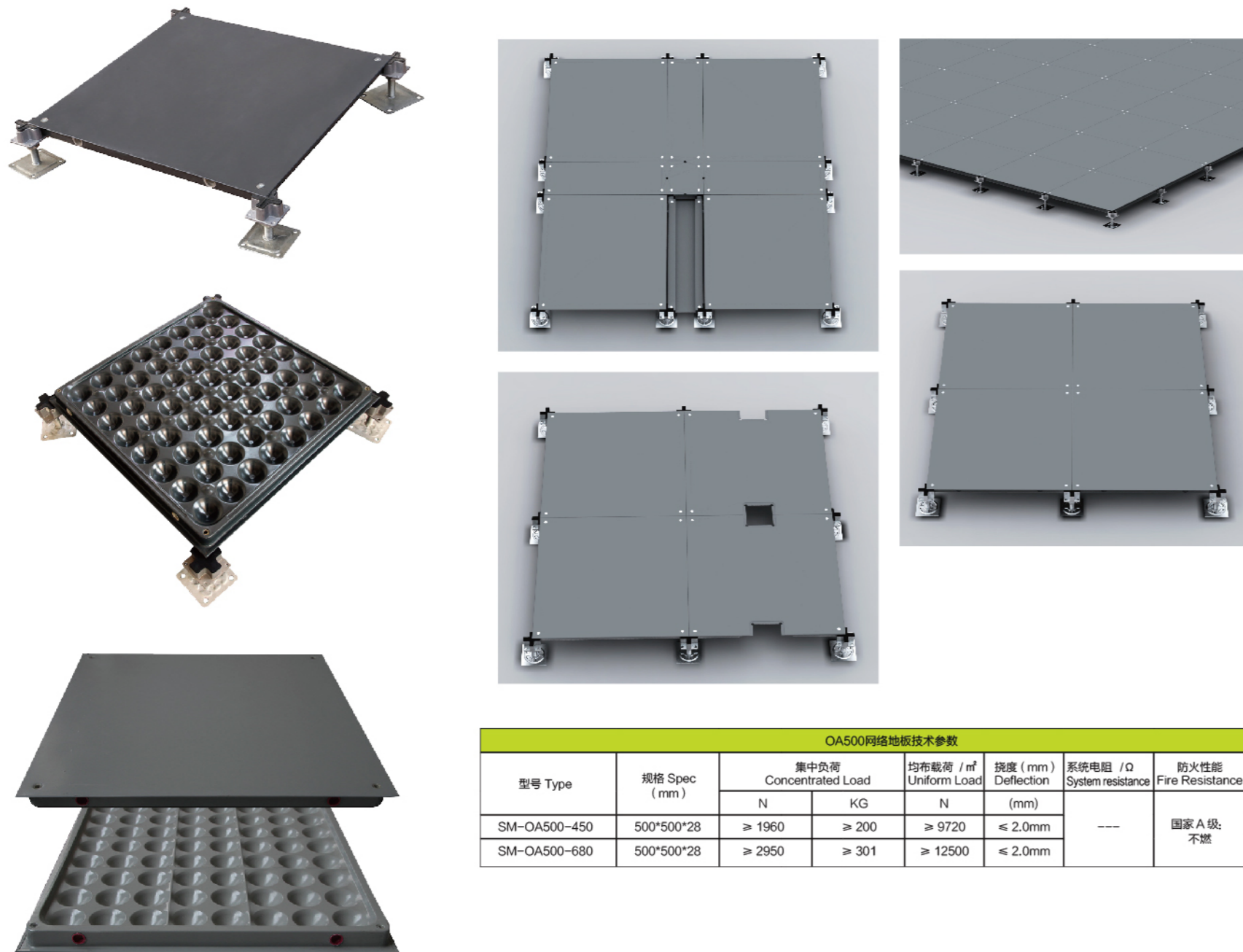
Product Application 产品应用

5A写字楼，智能化办公场所。
5A office building, intelligent office space.



OA-500 NETWORK ACCESS FLOOR

森迈OA-500网络地板

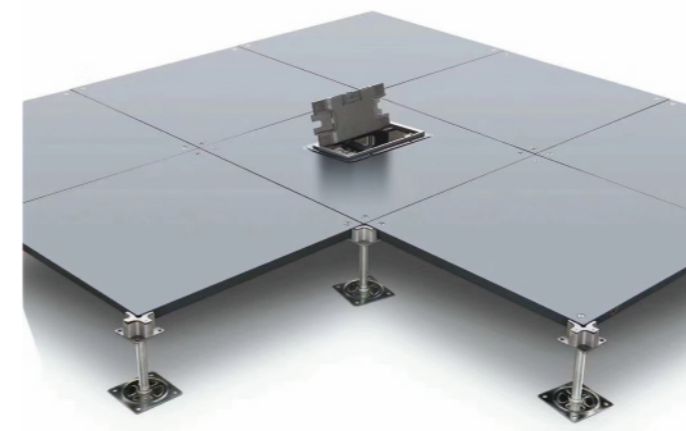
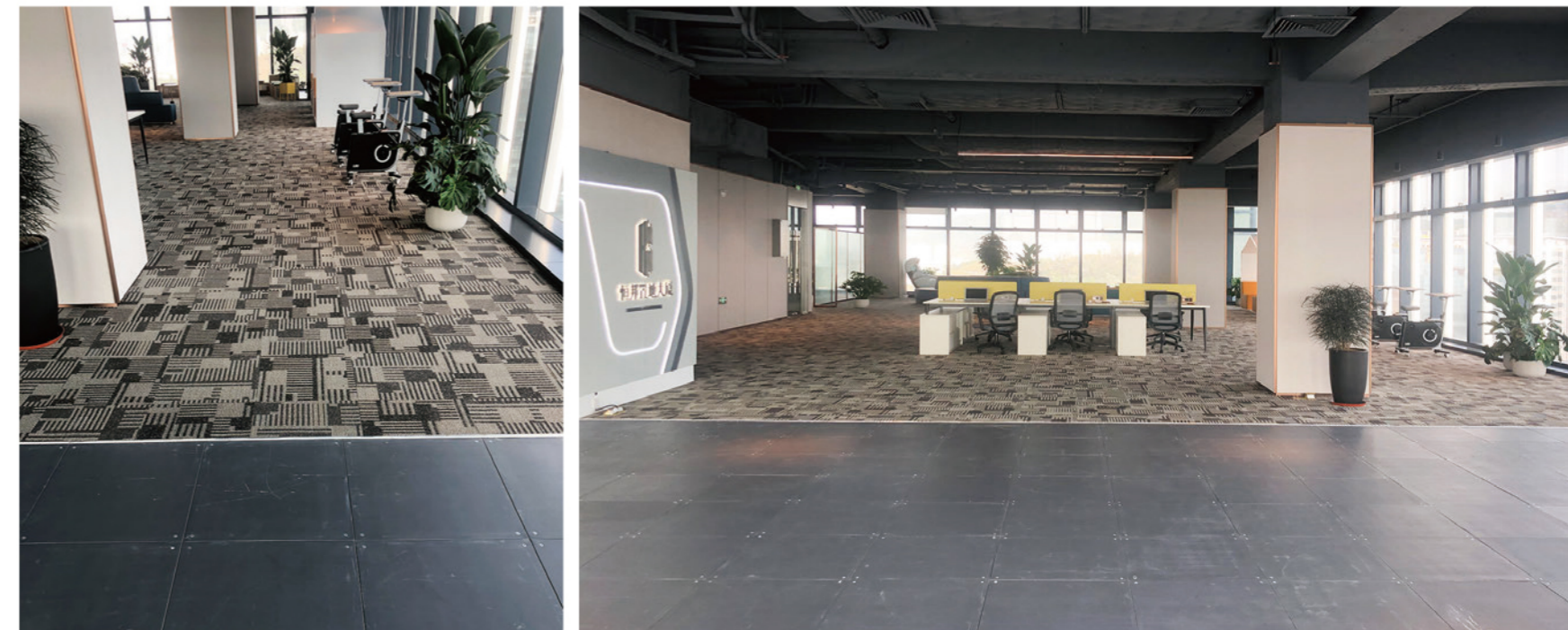


OA500网络地板技术参数							
型号 Type	规格 Spec (mm)	集中负荷 Concentrated Load		均布荷载 / m ² Uniform Load	挠度 (mm) Deflection	系统电阻 / Ω System resistance	防火性能 Fire Resistance
		N	KG	N	(mm)		
SM-OA500-450	500*500*28	≥ 1960	≥ 200	≥ 9720	≤ 2.0mm	---	国家 A 级: 不燃
SM-OA500-680	500*500*28	≥ 2950	≥ 301	≥ 12500	≤ 2.0mm		

OA-500 网络地板也可以与线槽任意组合安装，线槽规格通常为 500 × 150mm。
OA-500 network access floor can also be installed with trunking arbitrarily. The specifications of trunking are usually 500*150 mm.

OA-600 NETWORK ACCESS FLOOR

森迈OA-600网络地板



OA600 网络地板技术参数							
型号 Type	规格 Spec (mm)	集中负荷 Concentrated Load		均布荷载 / m ² Uniform Load	挠度 (mm) Deflection	系统电阻 / Ω System resistance	防火性能 Fire Resistance
		N	KG	N	(mm)		
SM-OA600-450	600*600*33	≥ 1960	≥ 200	≥ 9720	≤ 2.0mm	---	国家 A 级: 不燃
SM-OA600-680	600*600*33	≥ 2950	≥ 301	≥ 12500	≤ 2.0mm		

OA-600 网络地板也可以与线槽任意组合安装，线槽规格通常为 600 × 150mm。
OA-600 network access floor can also be installed with trunking arbitrarily. The specifications of trunking are usually 600*150 mm.

GLASS ACCESS FLOOR

玻璃地板

按使用场合分为：

家用玻璃地面，商业展览展示场所玻璃地面，工厂车间用玻璃地面，写字楼梯办公室用玻璃地面，公园景点玻璃地面，特殊场所玻璃地面（如医院和军队的某些特殊用途）。

按采用的玻璃材料特点分为：

单层钢化玻璃地面，双层夹胶钢化玻璃地面，多层（3层以上）钢化玻璃地面，复合中空钢化玻璃地面，这些地面材料的共同点是全是用钢化玻璃制成，区别的根据不同的环境和使用要求，对玻璃的厚度和层数采用不一样的组合方案。

按采用的结构特点分为：

钢结构玻璃地面，木结构玻璃地面，玻璃结构玻璃地面，其它结构玻璃地面（如铝材等），无结构玻璃地面（直接铺在基面上）。

It can be divided into:

Glass floor for home use, commercial exhibition, factory workshop, office, park and scenic spots, and special places (such as hospitals and military for some special purposes).

According to the characteristics of glass materials used, it can be divided into:

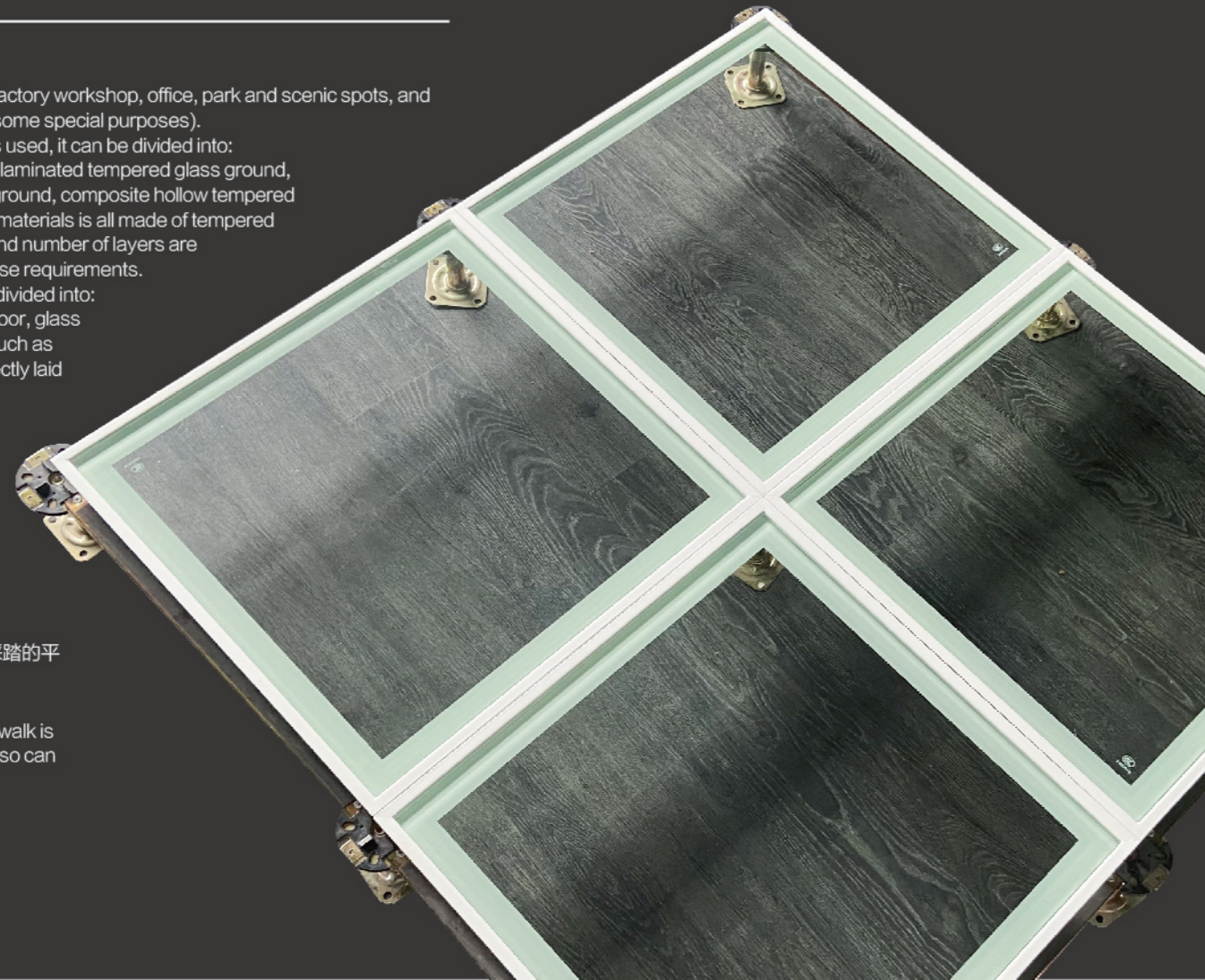
Single layer tempered glass ground, double layer laminated tempered glass ground, multi-layer (more than 3 layers) tempered glass ground, composite hollow tempered glass ground, the common point of these ground materials is all made of tempered glass, different combinations of glass thickness and number of layers are adopted according to different environment and use requirements.

According to the structural features adopted, it is divided into:

Steel structure glass floor, wood structure glass floor, glass structure glass floor, other structure glass floor (such as aluminum material), non structure glass floor (directly laid on the base surface).

用玻璃材料经过特别的处理作成的可供用于经常踩踏的平面。又叫玻璃地台或玻璃地板或玻璃平台。

The ground plane that can be used for frequently walk is made of glass material with special treatment, it also can be called glass platform or glass floor.



Functional Features 功能特点

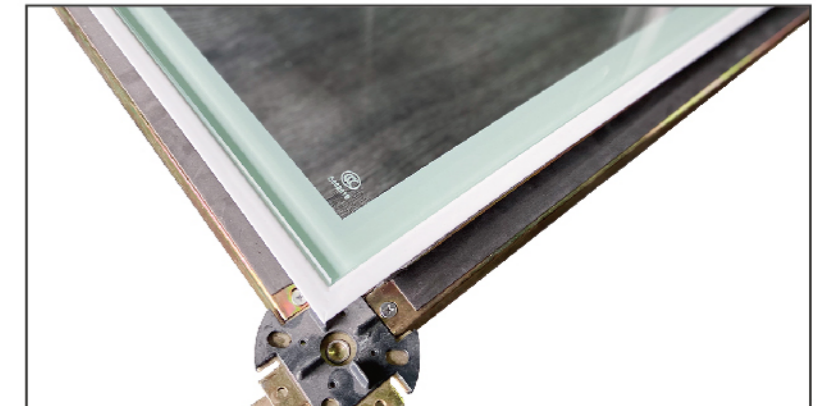
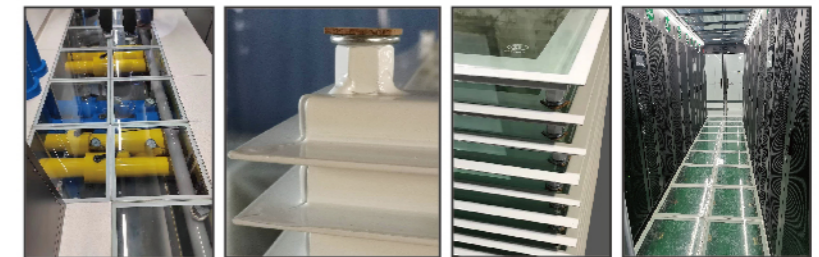
1. 增加通透性，更加有利于采光。
2. 便于人们在玻璃地面上展示和观察玻璃地面下的物品。
3. 与其它材料的地面一样，便于人们在上面自由活动并摆放各类设施。
4. 科技实验中，把有一定危险性的操作放在下面，人们在玻璃地面上安全的进行观察和操作。
5. 增加玻璃地面所在环境的通透美感。

1. Enhance permeability, more conducive to daylighting.
2. It is convenient for people to display and observe the objects under the glass ground.
3. Like the ground of other materials, it is convenient for people to move freely and put various facilities on it.
4. In science and technology experiment, the dangerous operation is put below, and people can observe and operate safely on the glass ground.
5. Increase the transparent aesthetic feeling of the environment where the glass floor is located.

Use requirements 使用要求

1. 绝对安全。结构和平面可以承受设计环境中的任何动、静负载和冲击。有一定的抗冲击冗余设计，可以抵抗一定的极端活动带来的冲击。
2. 防滑。除了用于特殊用途要求外（如滚轴溜冰），要有一定的防滑性能和相关的处理。防滑的问题在其它光滑地材上如石材和高光玻化瓷砖上也存在。不能因为防滑影响使用性能和通透性。当然，这个和人们主动的防滑措施也有关。比如穿防滑性能很好的鞋子。
3. 使用耐久性。玻璃地面价格不低，属于中高档地材，结构和材料表面一定要适用于长久的使用。
4. 使用的灵活性。很大一部分用户希望玻璃地面下作一些展示。这就要求玻璃地面的施工设计要考虑到安装方便，便于调整 and 移动。
5. 美观性。采用表面质量平整无缺点的玻璃以达到美观和美化环境的目的。同时也能提高玻璃表面的安全性。

1. Absolutely safe. The structure and plane can bear any dynamic and static load and impact in the design environment. It has a certain anti impact redundancy design, which can resist the impact of certain extreme activities.
2. Non slip. In addition to the requirements for special use (such as roller skating), it is necessary to have certain anti-skid performance and relevant treatment. The problem of antiskid also exists in other smooth materials such as stone and high gloss vitrified ceramic tile. The use performance and permeability shall not be affected by anti-skid. Of course, this is also related to people's active anti-skid measures. For example, wear shoes with good antiskid performance.
3. Durability of use. the price of glass floor is expensive. It belongs to medium and high grade floor materials. The structure and material surface must be suitable for long-term use.
4. Flexibility of use, most of users would like to exhibition under the glass floor, This requires that the construction design of the glass floor should consider the convenience of installation, adjustment and movement.
5. Aesthetics. The glass is no defect with smooth surface so that it looks beautiful. At the same time, it can improve the safety of glass surface.



ACCESSORIES

配件及辅料

Panel lifter 吸盘

为便于地板安装及维修，专用的地板起揭器有单吸盘式和双吸盘式，也可以使用玻璃起揭器。

We can use the cup lifter which is dedicated for floor panels so that easy to installation and maintenance, also can use glass lifter.



Outlet box 出线盒

根据工程需示，施工现场进行地板开孔或工厂批量开孔后配送工地。开孔地板除配装专用地插座，亦可配套塑制出线盒。

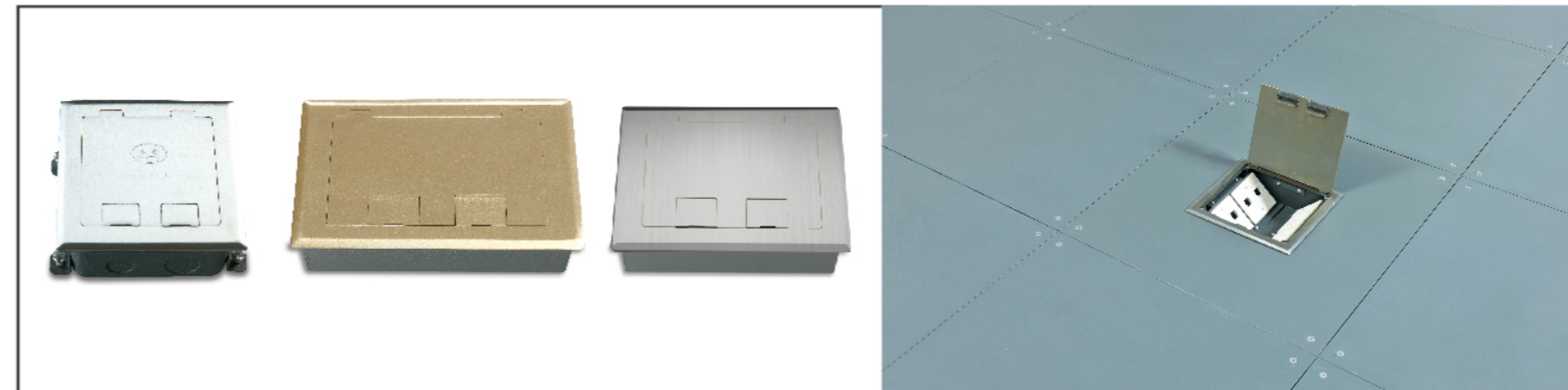
Drill holes on the floor on construction site or drilled before delivery is depends on project requirements. The perforated floor is equipped with plug or plastic outlet box.



Ground socket 地插座

为方便客户，完善网络架空地板的智能化综合功能，开发了各种适用于网络架空地板的专用地插座。

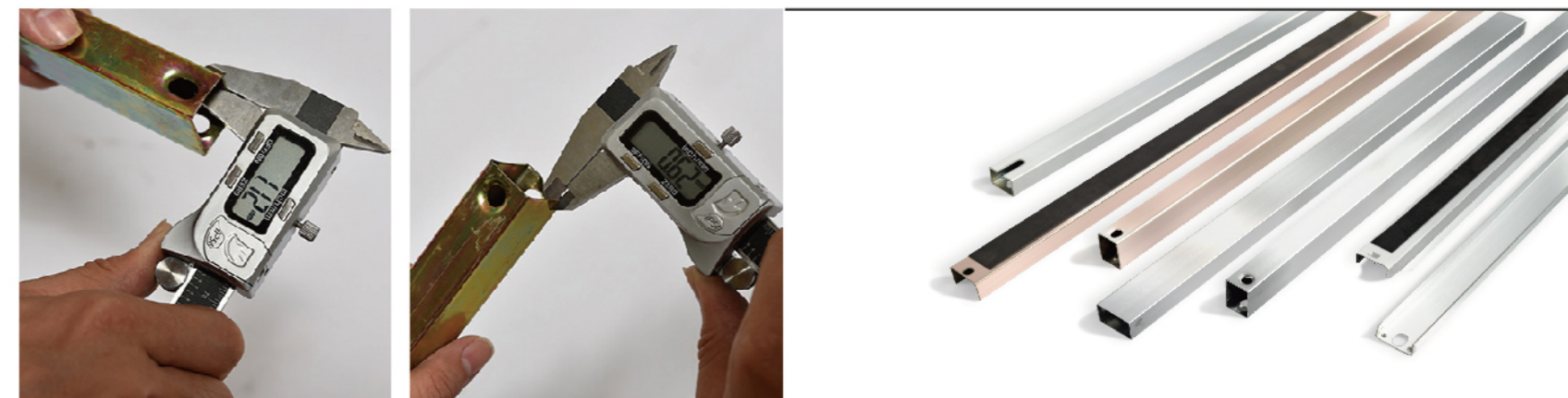
In order to meet customers' requirement, as well as to improve the integrated intelligent function of network raised floor, we developed various special plug which suitable for network raised floor.



Stringer 横梁

采用四周支撑式安装地板，必须配有钢制镀锌横梁。视工程需求，确定横梁是否黏贴密封（缓冲）胶条。

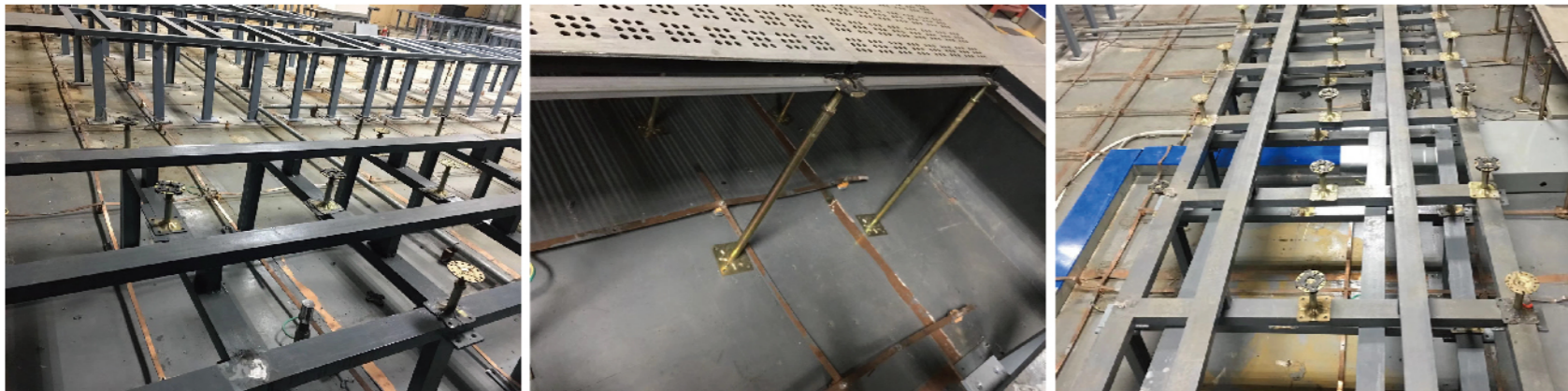
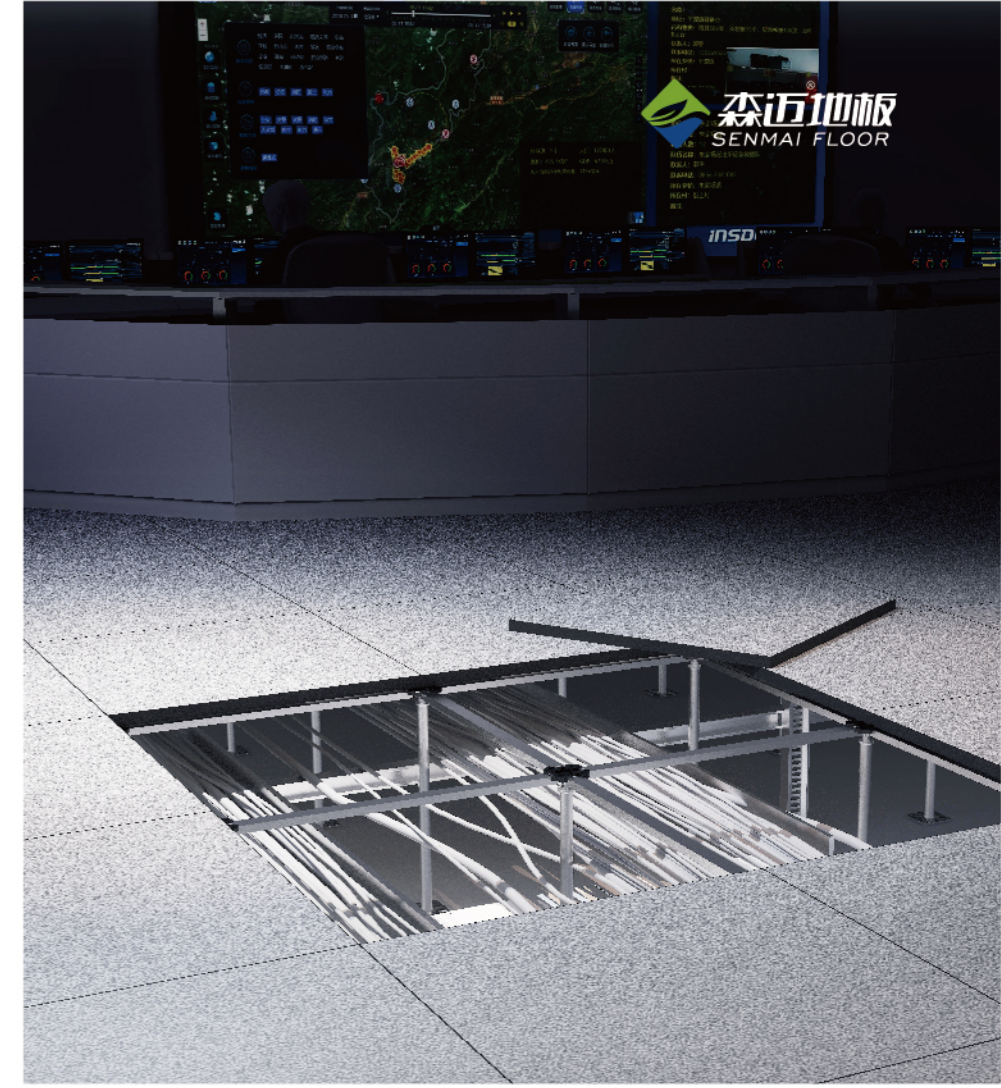
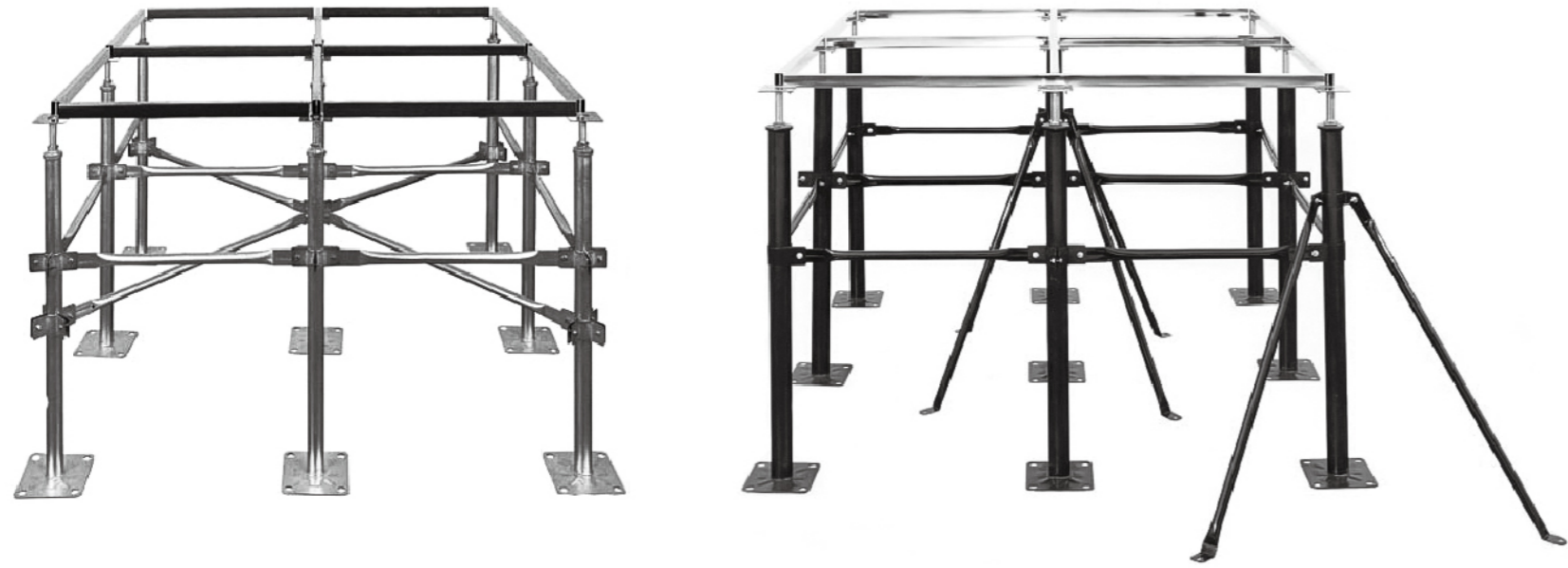
The floor is installed with supported 4 sides, which need galvanized stringers. Whether it is necessary add rubber is according to engineering requirements.



Pedestal 支架

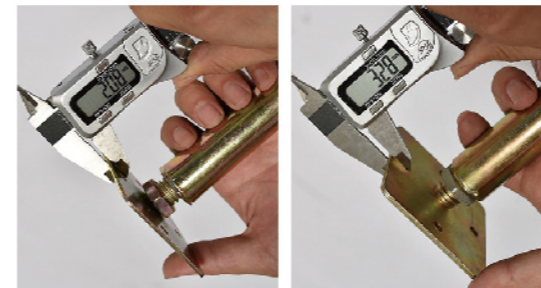
斜撑、横拉杆和抱箍作为支架的辅助连接件，一般搭配超高、超强支架的使用，增强地板安装结构的稳固性。

Auxiliary connector is bracket, stringer and hoop, it can be used with super high and super strong pedestal to enhance the stability of floor installation structure.



主要应用于对承载性能和架空高度要求较高的场所铺设铝合金地板。支撑管管径可从 ϕ 38mm到 ϕ 100mm以上。

Applied in places which require heavy loading capacity or high finished floor height. Pedestal base tube size from ϕ 38mm go greater than ϕ 100mm diameter round tube.



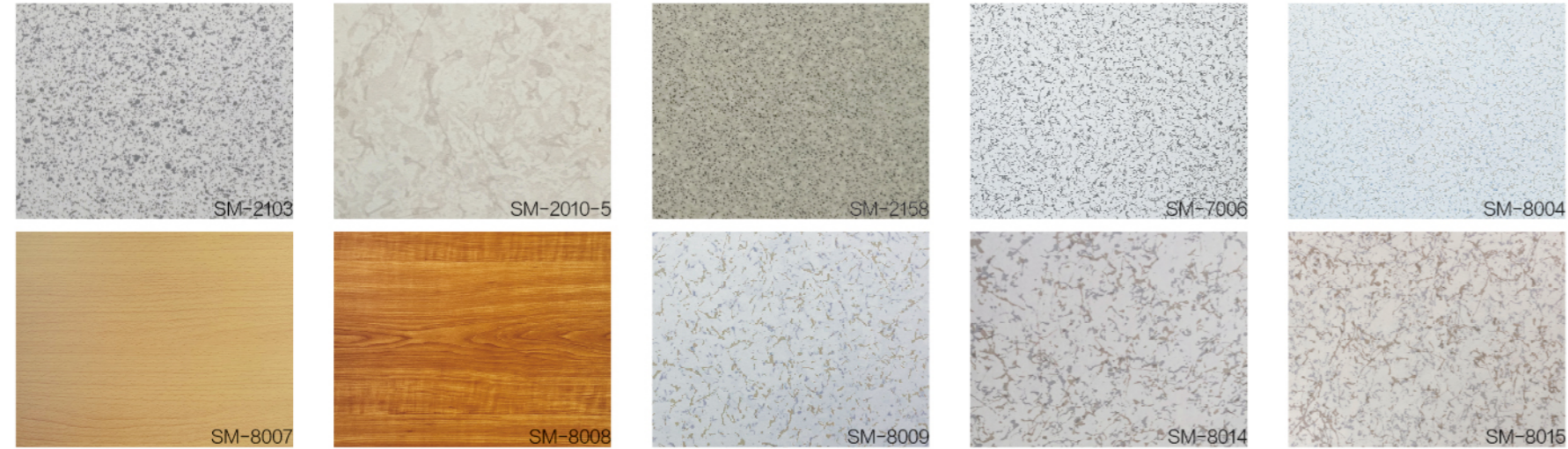
DECORATIVE VENEERS

装饰类贴面

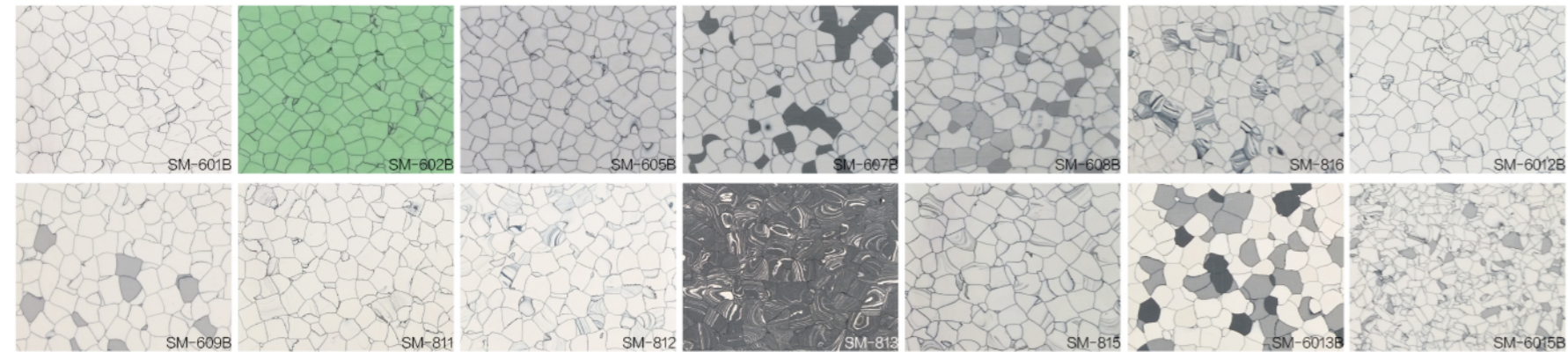
我们提供广泛的地板贴面种类，您可以在丰富多样的种类型号和色卡中选择符合建筑风格的贴面。无论是陶瓷贴面、HPL贴面、PVC卷材、PVC贴面、地毯贴面，请根据自己的喜好选择并联系我们定制可行性方案。

We offer a wide range of floor veneers, you can choose from a variety of types and color cards in line with the architectural style of veneers. Whether it is porcelain, carpet pattern, solid wood composite, melamine, ethylene, oil blanket or rubber, please choose and contact us to customize the feasibility plan according to your preferences.

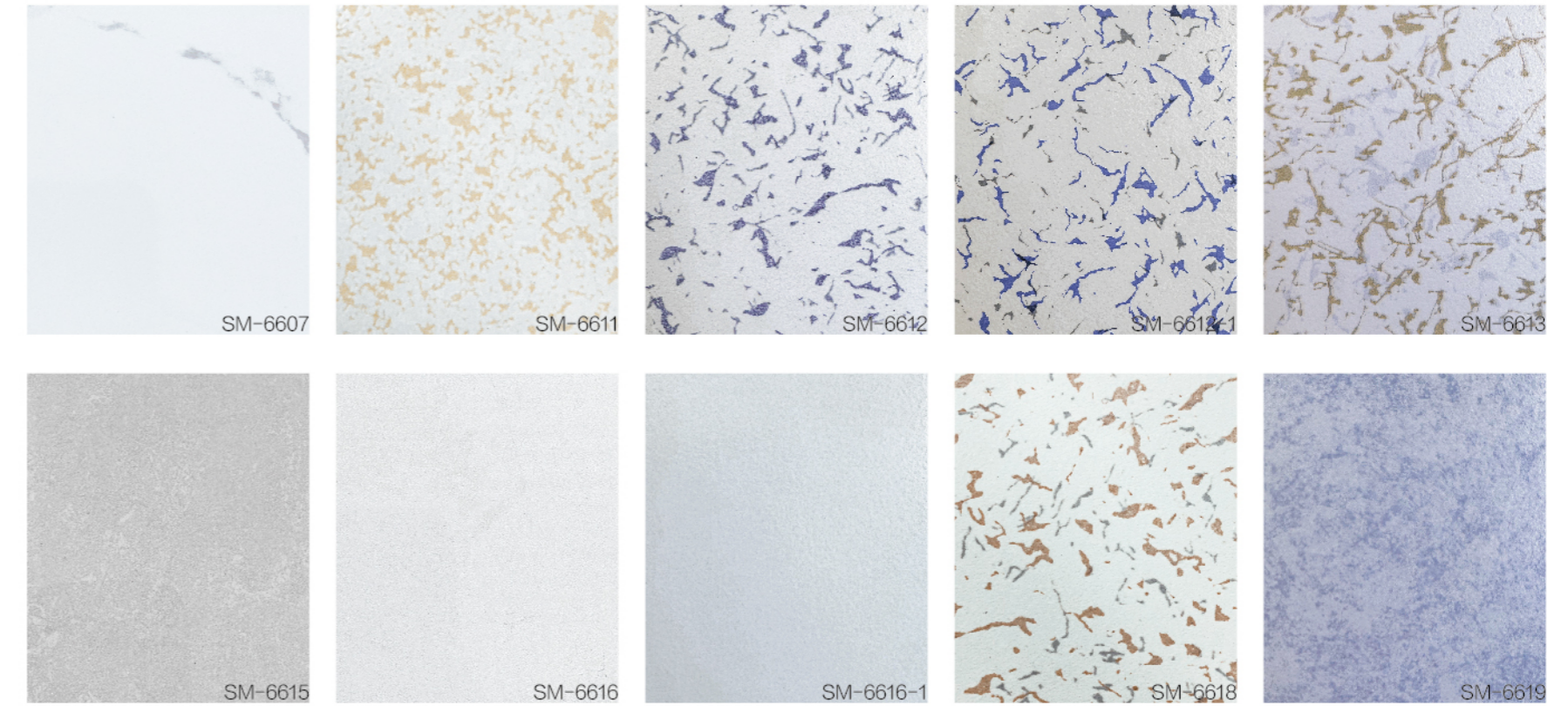
HPL Coverings HPL贴面



PVC Coverings PVC贴面



Anti Static Ceramic Veneer 防静电陶瓷贴面



Ceramic Veneer 陶瓷贴面





北京小米智慧园产业基地
Beijing Xiaomi Smart Park Industrial Base

材料: 硫酸钙网络地板
Material: Calcium Sulfate Network Floor
规格Size: 600*600*30mm
面积Area: 30000m²
完工日期Completion date: 2021.12



南京银行河西总部装修项目
Bank of Nanjing Hexi Headquarters Renovation Project

材料: 硫酸钙网络地板
Material: Calcium Sulfate Network Floor
规格Size: 600*600*30mm
面积Area: 42000m²
完工日期Completion date: 2022.08



深圳立桥金融中心项目
Shenzhen Lixiao Financial Center Project

材料: 硫酸钙网络地板
Material: Calcium Sulfate Network Floor
规格Size: 600*600*33mm
面积Area: 22000m²
完工日期Completion date: 2020.8



光启未来中心
Guangqi Future Center

材料: OA网络地板/硫酸钙网络地板
Material: OA Network Access Floor
Calcium Sulphate Network Access Floor
规格Size: 600*600*33mm / 600*600*30mm
面积Area: 68500m²
完工日期Completion date: 2020.7



广州南沙中交国际邮轮广场项目
Guangzhou Nansha CCCC International Cruise Plaza Project

材料: GRC水泥地板
Material: GRC cement floor
规格Size: 500*500*26mm
面积Area: 12000m²
完工日期Completion date: 2022.9



深圳会展湾云案广场
Shenzhen Convention and Exhibition Bay Cloud Case Plaza

材料: GRC水泥地板
Material: GRC cement floor
规格Size: 500*500*26mm
面积Area: 25000m²
完工日期Completion date: 2021.7



厦门欣贺研发设计中心
Xiamen Xinga R&D and Design Center

材料: GRC水泥地板
Material: GRC cement floor
规格Size: 500*500*26mm
面积Area: 15000m²
完工日期Completion date: 2021.12



恒邦置地大厦
Humon Land Tower

材料: 全钢网络地板
Material: All Steel Network Access Floor
规格Size: 600*600*33mm
面积Area: 34000m²
完工日期Completion date: 2020.4



中粮大悦城
COFCO DA Yue city

材料: 硫酸钙网络地板
Material: Calcium Sulphate Network Access Floor
规格Size: 600*600*30mm
面积Area: 30000m²
完工日期Completion date: 2023.5



上海金桥现代服务园(II)期地铁板块
Metro Section Of Shanghai Jinqiao Modern Service Park (Phase II)

材料: OA网络地板
Material: OA Network Access Floor
规格Size: 600*600*33mm
面积Area: 28000m²
完工日期Completion date: 2019.10



广州宝钢大厦
Guangzhou Baosteel Building

材料: OA网络地板
Material: OA Network Access Floor
规格Size: 500*500*28mm
面积Area: 18500m²
完工日期Completion date: 2018.11



福田科技广场
Futian Technology Plaza

材料: OA网络地板
Material: OA Network Access Floor
规格Size: 500*500*28mm
面积Area: 35000m²
完工日期Completion date: 2016-2019



中国移动防静电地板集中采购项目
China Mobile anti-static flooring centralized procurement project

材料: 硫酸钙防静电地板
Material: Calcium sulfate anti-static floor
规格Size: 600*600*32mm
面积Area: 20000m²
完工日期Completion date: 在建



中国联通互联网应用创新基地一期工程
China Unicom Internet Application Innovation Base Phase I Project

材料: 硫酸钙防静电地板
Material: Calcium sulfate anti-static floor
规格Size: 600*600*32mm
面积Area: 8000m²
完工日期Completion date: 2021.3



西安特发西港数据中心
Xi'an Tefa Westport Data Center

材料: 硫酸钙防静电地板
Material: Calcium sulfate anti-static floor
规格Size: 600*600*32mm
面积Area: 6000m²
完工日期Completion date: 2022.2



万华化学集团宁波项目
China Mobile anti-static flooring centralized procurement project

材料: 硫酸钙防静电地板
Material: Calcium sulfate anti-static floor
规格Size: 600*600*35mm
面积Area: 4290m²
完工日期Completion date: 2022.05



富士康集团
Foxconn Group

材料: PVC面全钢通风地板
Material: All Steel Anti-static Air Flow Access Floor (PVC Covering)
规格Size: 600*600*35mm
通风率Ventilation rate: 35%
面积Area: 25000m²



深圳比亚迪
Shenzhen BYD

材料: PVC面全钢通风地板
Material: All Steel Anti-static Air Flow Access Floor (PVC Covering)
规格Size: 600*600*35mm
通风率Ventilation rate: 25%
面积Area: 32000m²



深圳大学城
Shenzhen University Town

材料: 全钢有边防静电地板
Material: All Steel Anti-static Access Floor With Edge Trims
规格Size: 600*600*35mm
面积Area: 35000m²
完工日期Completion date: 2018.4



深圳鼎和大厦
Shenzhen DINGHE Building

材料: 硫酸钙网络地板
Material: Calcium Sulphate Network Access Floor
规格Size: 600*600*30mm
面积Area: 25000m²
完工日期Completion date: 2018.6



江西合力泰科技股份
Jiangxi Helitai Technology Co., Ltd

材料: 铝合金通风地板
Material: Aluminum Anti-static Air Flow Access Floor
规格Size: 600*600*50mm
通风率Ventilation rate: 25%
面积Area: 25800m²



柔宇科技
Ruoyu Technology

材料: 铝合金通风地板
Material: Aluminum Anti-static Air Flow Access Floor
规格Size: 600*600*50mm
通风率Ventilation rate: 25%
面积Area: 28000m²



深圳市公安局
Shenzhen Public Security Bureau

材料: 陶瓷防静电地板
Material: All Steel Anti-static Access Floor With Ceramic Covering
规格Size: 600*600*40mm
面积Area: 13000m²
完工日期Completion date: 2018.8



深圳市地铁
Shenzhen Metro

材料: 全钢防静电地板
Material: All Steel Anti-static Access Floor With Ceramic Covering
面积Area: 34900m²