

E-wash



ZheJiang WuShi Industry & Trade CO.,LTD

PROFESSION • INNOVATION



CONTENTS



ABOUT US



R&D
PRODUCTS



MANUFACTURE



PARTNERS

A faint, light gray world map serves as the background for the slide.

01

ABOUT US





- *The parent company was established in 1998
- *The area of its own factory is 50000 m²
- *500+ sets of moulds
- *200+ sets of large-scale processing equipment
- *30+ production lines
- *100+ sets of testing equipment
- *80%+ parts manufactured by our own factory
- *In 2019, A branch factory was established in Vietnam
- *In 2022, The construction of a new factory building of 45000 m² began and will be put into operation in the second half of this year.

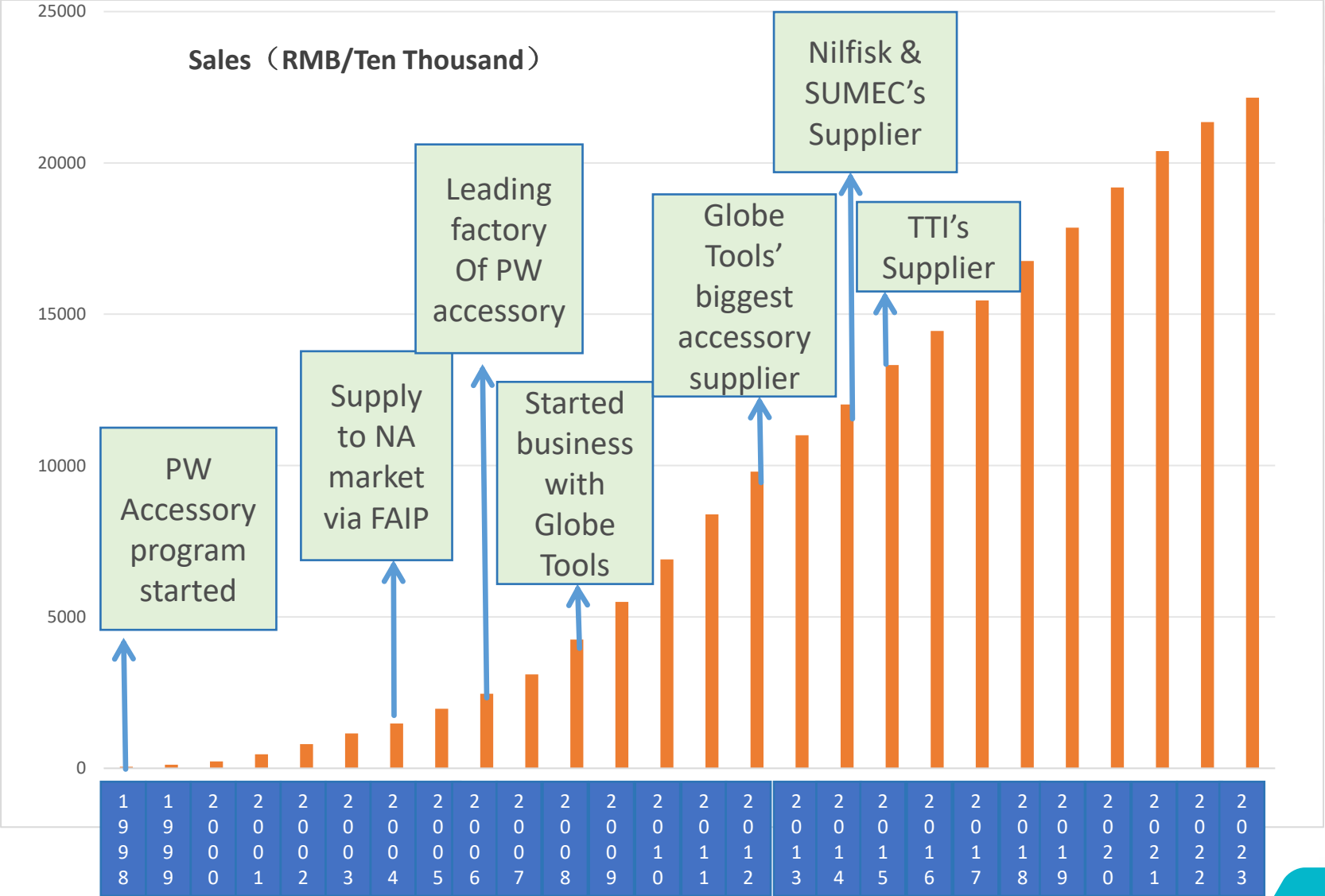


300+ Employees In China
100+Employees In Vietnam



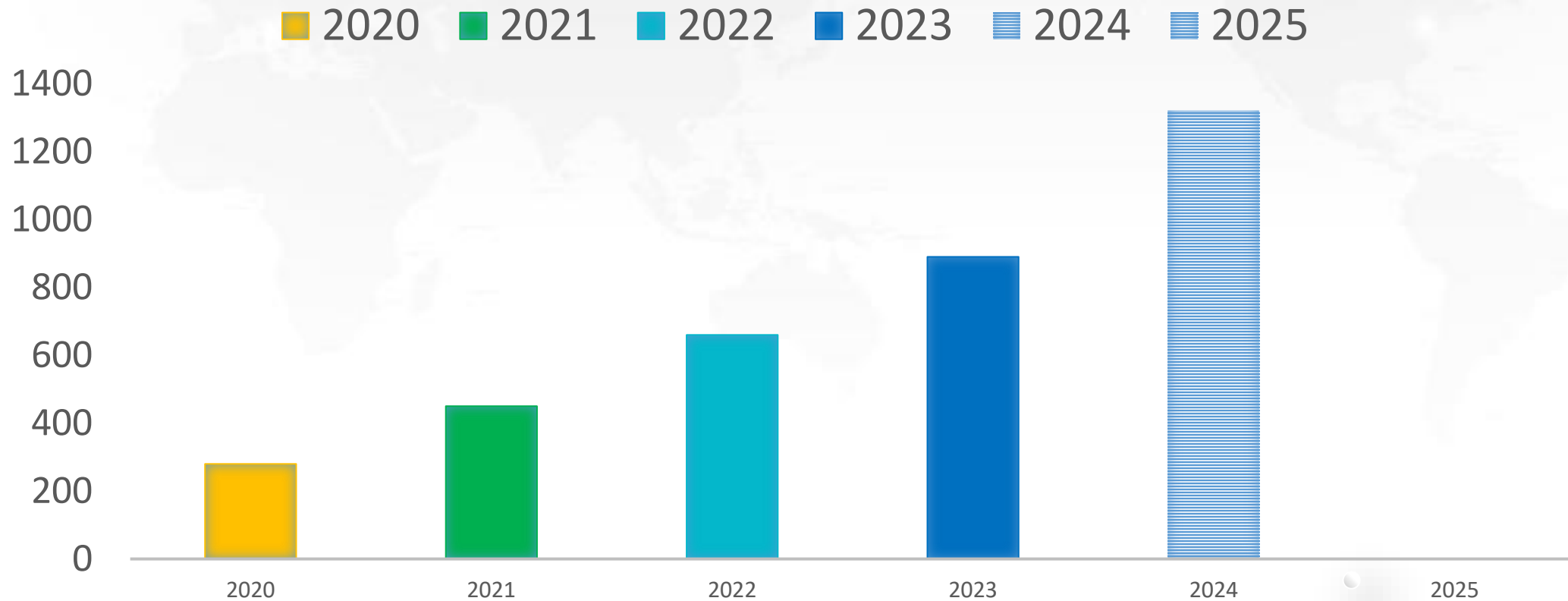
Engineers 30+
Designers 10+

ANNUAL SALES QUANTITY- Accessories



ANNUAL SALES QUANTITY- High Pressure Washer

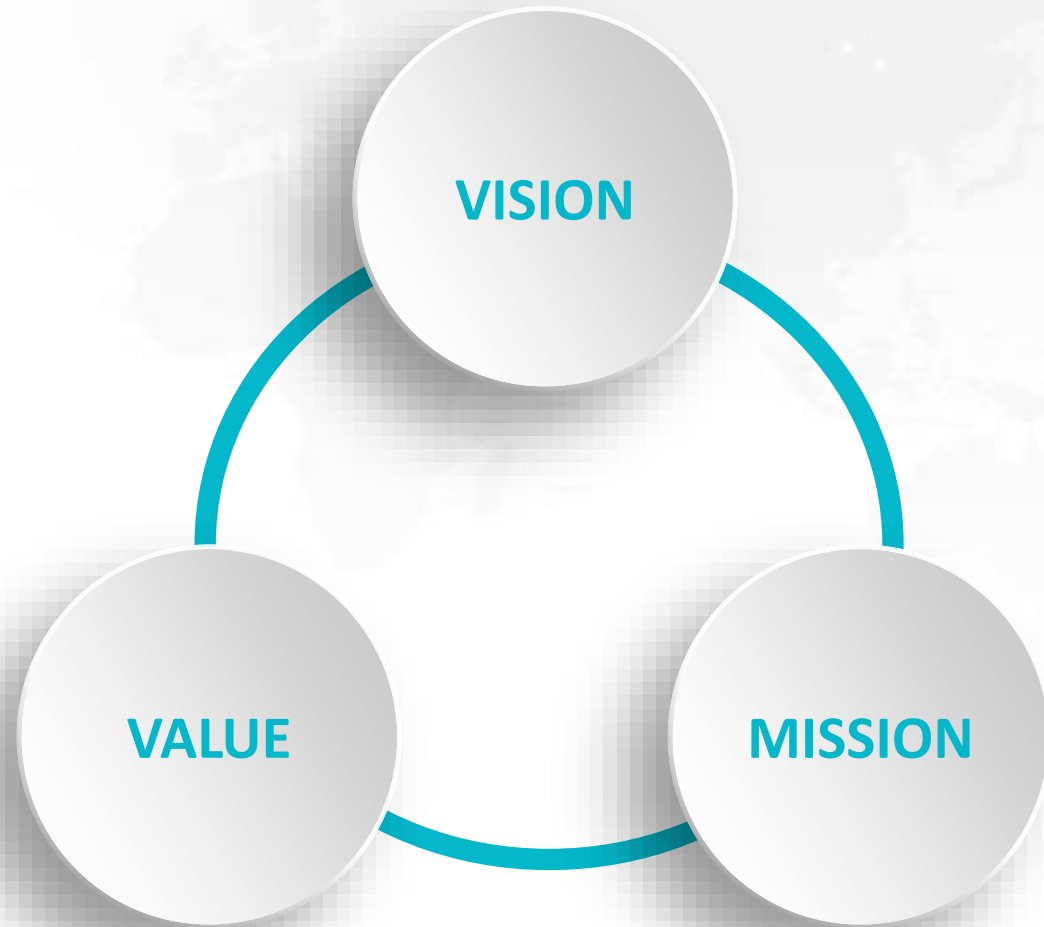
SALES QUANTITY(K)



Certification



CULTURE



VISION

TO BE A HIGH QUALITY CLEANING SOLUTION
MANUFACTURER

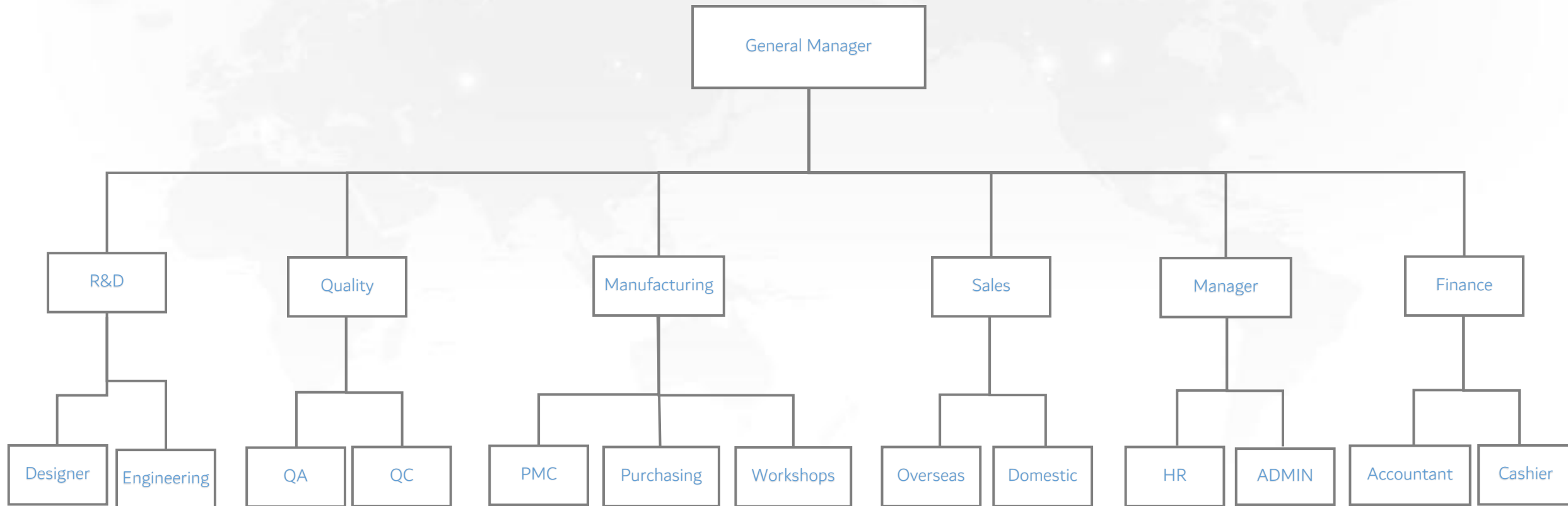
VALUE

SINCERITY, PRAGMATISM, MUTUAL CREATION,
WIN-WIN

MISSION

BEYOND YOUR EXPECTATION

ORGANIZATION



02

R & D
PRODUCTS





PRODUCT LINE-Accessories



PRODUCT LINE-Accessories



PRODUCT LINE-Accessories





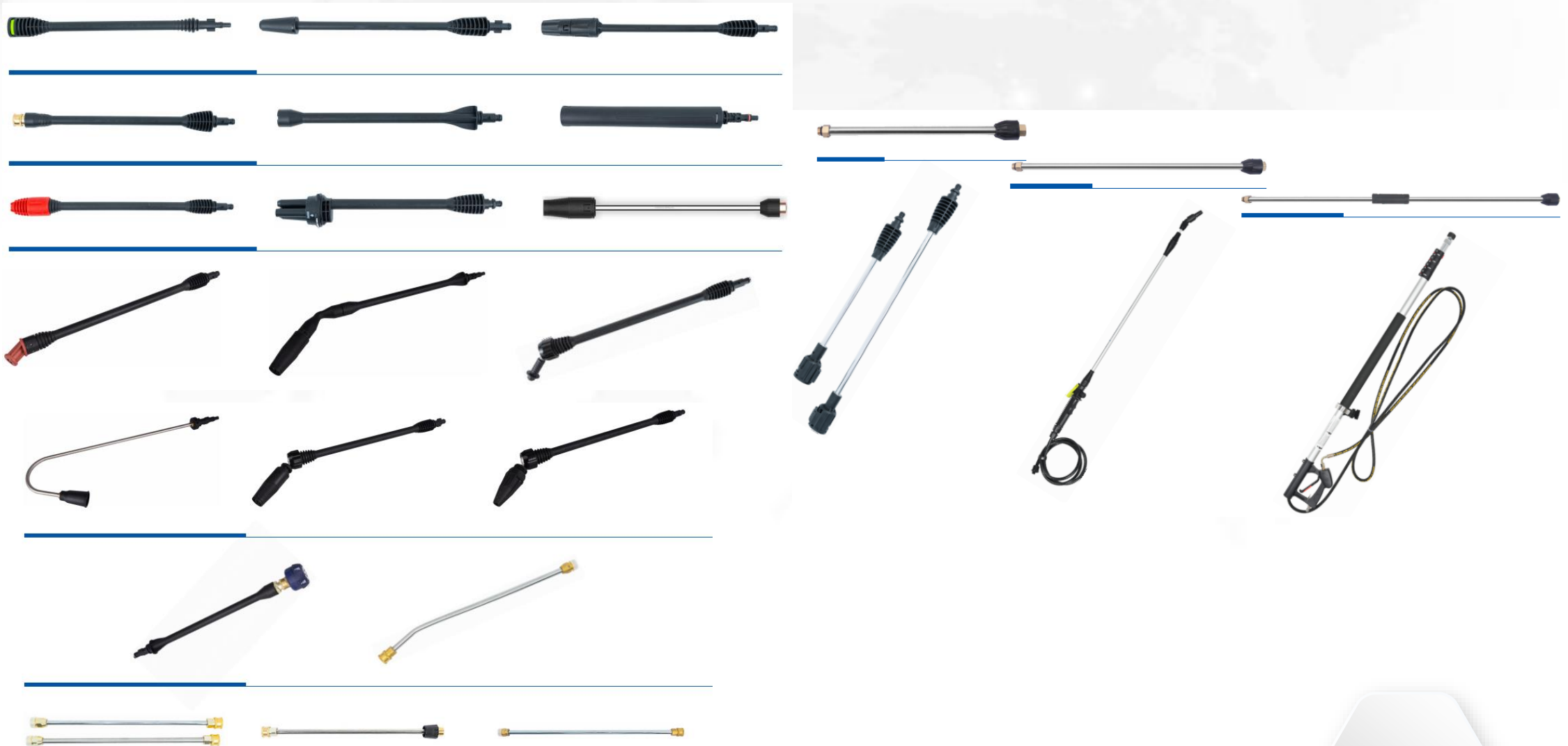
PRODUCT LINE-Accessories



PRODUCT LINE-Accessories



PRODUCT LINE-Accessories



PRODUCT LINE-Accessories





PRODUCT LINE-Accessories



PRODUCT LINE-Accessories



PRODUCT LINE-High Pressure Washer



2

3

4

5

6

ENG

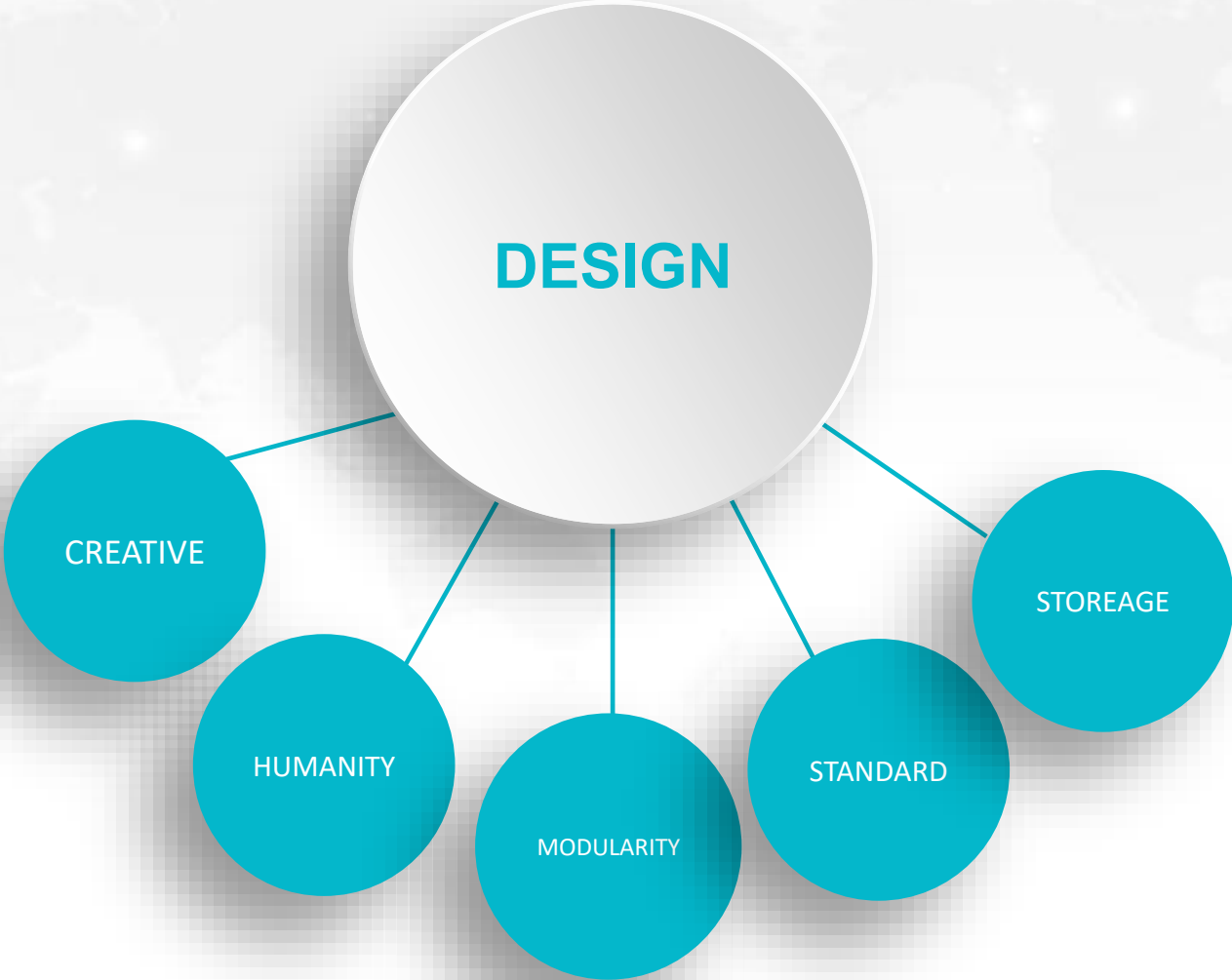
Commercial PW



	OPP	MPP	HPP	ENGINE
Machine Structure	<ul style="list-style-type: none"> • Frame • Portable 	<ul style="list-style-type: none"> • Frame 	<ul style="list-style-type: none"> • Frame 	<ul style="list-style-type: none"> • Frame
Main Specification	<ul style="list-style-type: none"> • Input Power $\leq 2.4\text{KW}$ • Working Pressure $\leq 80\text{bar}$ • Flow 10~15L/min • One continuous working life $\geq 600\text{hours}$ 	<ul style="list-style-type: none"> • Input Power $\leq 4\text{KW}$ • Working Pressure 70~150bar • Flow 10~20L/min • One continuous working life $\geq 800\text{hours}$ 	<ul style="list-style-type: none"> • Input Power $\leq 7.5\text{KW}$ • Working Pressure $\leq 250\text{bar}$ • Flow 15L/min • One continuous working life $\geq 800\text{hours}$ 	<ul style="list-style-type: none"> • Input Power 5.5HP-13HP • Working Pressure 150-250bar • Flow 10-15L/min • One continuous working life $\geq 150-300\text{hours}$
Main Function	<ul style="list-style-type: none"> • Motor Overload Protection • Copper Pump Head • Double Water Seal • Spray ceramic Plunger • Water filter 	<ul style="list-style-type: none"> • Motor Overload Protection • Copper Pump Head • Double Water Seal • Full ceramic plunger • PARK seal • Inlet Multi-stage Filter 	<ul style="list-style-type: none"> • Copper Pump Head • Double Water Seal • Motor Overload Protection • Full ceramic plunger • PARK seal • Inlet Multi-stage Filter 	<ul style="list-style-type: none"> • Copper Pump Head • Double Water Seal • Motor Overload Protection • Full ceramic plunger • PARK seal • Inlet Multi-stage Filter



HOUSEHOLD PW



HOUSEHOLD

OPP



MPP



HPP





SCENARIO



Car wash



Floor wash



Boat wash



House wash



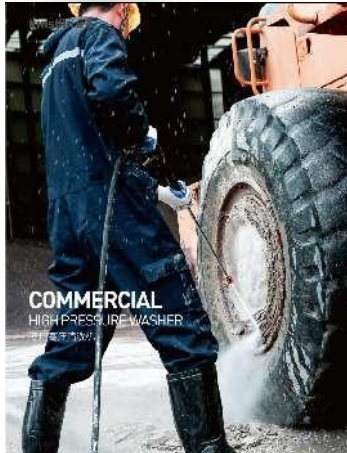


Commercial PW

OPP



MPP



HPP



SCENARIO



03

MANUFACTURE



WORKSHOP



COMMERCIAL PW ASSEMBLE



WORKSHOP

COMMERCIAL PW ASSEMBLE

WORKSHOP



HOUSHOLD PW ASSEMBLE



WORKSHOP



Motor line (auto)



motor assemble line



Injection machine



Machining



Three-dimensional



Auto Testing line



Assemble line



Quality Control



Quality Control





Quality Control

Quality control process:

- 1 Income components quality inspection (**AQL standard**)
- 2 **Inline** inspection quality control
- 3 **Functional inspection** before shipment
- 4 **Performance test** for normal products in-house test lab



PARTNERS



StanleyBlack&Decker



kinshin

THANKS



BEYOND YOUR EXPECTATION!

