

# Operation Instruction

## M-201G Hand sensor switch

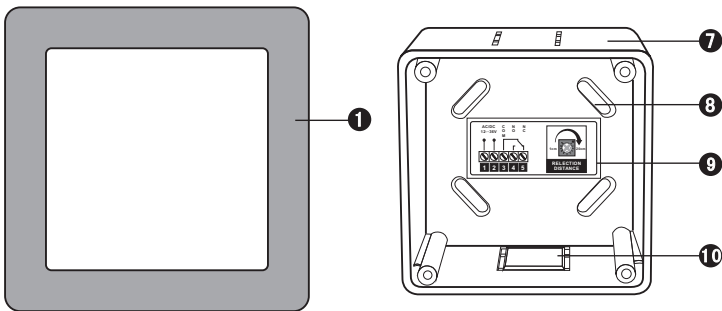
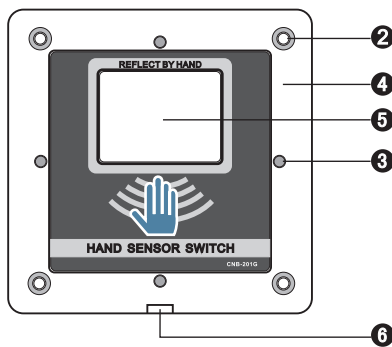
Make your choice.....



### 1 Security Guide

**!** Thank you so much for your purchasing. Please refer to the following before using.

### 2 Overview

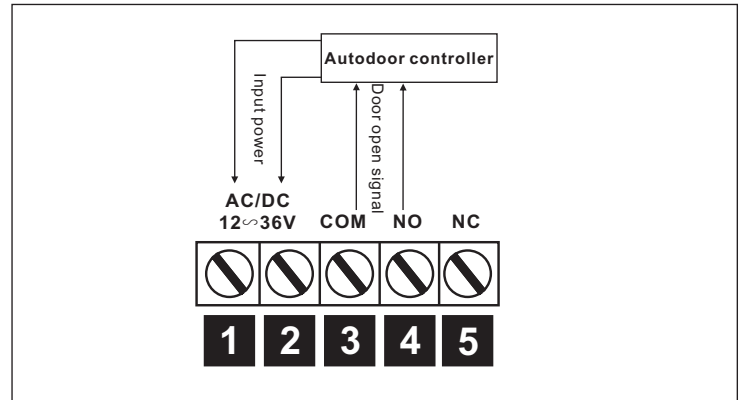


- 1 stainless steel panel
- 2 fixing screw×4pcs(bottom)
- 3 fixing magnet×4pcs (Panel)
- 4 main panel
- 5 Sensing Window
- 6 hole for cover remove
- 7 bottom cap
- 8 Fix screw\*4pcs
- 9 Wiring Label
- 10 The punch line×3pcs

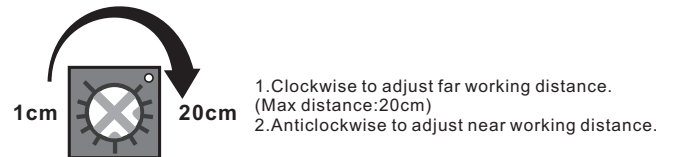
### 3 Feature

- With the non-contact induction design, door can be open in an easy and clean way.
- Transmit distance is adjustable from 1-20cm, can be set according to actual occasion.
- Adopt infrared modulation-demodulation, interference signal will not be caused.
- With 86 Panel, special design with bottom panel, convenient for different installation.
- With Relay contact output, available for connection with automatic door control devices.

### 4 Wiring



### 5 Distance adjusting



### 6 Usage



### 7 Parameters

Input Power	AC/DC12V~36V
Sensing distance	1~20cm
Modem frequency	38KHZ
Action Current (DC12V) :	55mA
Dimension	92×92×33mm
Hole Dimension	85×85×30mm