

GAOGE

S40 Ride-on Sweeper



CE

CAUTION: Read The Instruction Before Using The Machine

For Professional Users & Industry

TABLE OF CONTENTS

2.1、 Preface	4
2.2、 Manual Statement	5
3.1、 Accessories	5
3.2、 Disposal of Used Vehicles	6
3.3、 Symbols in the Operation Manual	6
3.4、 Symbols on the Vehicle	6
4.1、 General Safety Instructions	8
4.2、 Safety Instructions for Operation	12
4.3、 Safety Instructions for Driving	13
4.4、 Safety Instructions for the Battery	13
4.5、 Safety Instructions for Vehicle Transportation	14
4.6、 Safety Instructions for Maintenance	15
5.1、 Equipment Appearance	16
5.2、 Dustbin Power Port / Switch	16
5.3、 Steering Wheel Console	17
5.4、 Seat	18
5.5、 Pedals	19
5.6、 Multimedia	19
5.7、 Air Conditioning	20
5.8、 Suction Power and Side Brush Speed Adjustment	21

5.9、 External Buttons and Switches	22
6、 Starting	22
6.1、 Preparation / Safety Check Before Starting	22
6.2、 Adding Water	23
7.1、 Driving Mode	24
7.2、 Sweeping Mode	24
7.3、 Dumping Trash	25
7.4、 Shutting Down the Machine	26
8.1、 Inspection / Adjustment of Additional Equipment	27
9.1、 Towing the Vehicle	28
10、 Storage	28
11.1、 General Instructions	28
11.2、 Maintenance Intervals	29
11.3、 Maintenance Operations	29
11.4、 Maintenance Schedule Table	30
11.5、 Replacement of Wear Parts	31
12、 Troubleshooting	33
13、 Warranty Instructions	36
14、 Consumables List	38

2.1 Preface

Dear User:

Welcome to the use of our company's series of sweepers.

Note: This manual is applicable only to sweepers.

To help you become familiar with your new machine, please read this manual carefully before operating your sweeper. Here, you will find important information about the sweeper that will allow you to make full use of its technical features and enjoy an effortless, thorough cleaning experience.

In addition, this User Manual specifies the product quality warranty, as well as the rights and obligations regarding after-sales service between our company and users. Please make sure to read this manual carefully before using our product.

You will also find important maintenance information, which is essential for ensuring the safety and performance of your sweeper and maintaining its long-term reliability.

All information contained in this manual is accurate up to the time of printing. However, our company reserves the right to make improvements and structural modifications to the product at any time, without prior notice, in order to better meet users' needs.

We sincerely wish you an enjoyable experience with your sweeper!

2.2 Manual Statement

Important Notice:

- Our company is fully responsible for the revision and clarification of this *User Manual* and reserves the right to make improvements to the product after printing this manual without prior notice. Some images in this manual are schematic and for reference only. In case of discrepancies between the images and the actual product, the actual product shall prevail.
- Please keep this manual in your vehicle for easy reference whenever needed. This *User Manual* is an important part of the vehicle's accompanying documents.
- If any malfunction occurs during use, please refer to the maintenance manual and contact our company. Do not attempt to disassemble the vehicle on your own. Any consequences arising from unauthorized operation shall be borne by the user.
- If replacement parts are required, only qualified parts produced by our company must be used. The use of parts from other manufacturers is not allowed and will void the warranty. Any resulting consequences shall be borne by the user.
- The machine's nameplate contains the model and chassis number, which are very important when purchasing spare parts.
- If you encounter any unclear points while reading this manual, our company will provide further explanations. We also welcome valuable feedback and suggestions from all users.

3 General Information

3.1 Accessories

No.	Name	Unit	Quantity
1	Main Unit	Unit	1
2	Charger	Unit	1
3	Toolbox	Set	1
4	User Manual	Copy	1
5	Maintenance Manual	Copy	1
6	Certificate of Conformity	Sheet	1

3.2 Disposal of Used Vehicles



Note:

Waste vehicles contain valuable materials and should be properly recycled. We recommend that you cooperate with a waste management company for the disposal of waste vehicles.

3.3 Symbols in the Operation Manual



Danger!

These symbols indicate situations that are dangerous to the operator (even potentially life-threatening).



Electrical Hazard Warning!

This symbol indicates a potential risk of injury to personnel.



Caution!

This symbol indicates caution, important notes, or useful functions. Pay special attention to sections marked with these symbols.



Note:

You must read this user manual before operating the machine.

3.4 Symbols on the Vehicle





Warning:


This symbol alerts the user that the operation is hazardous.

Note:


This symbol indicates that the operation is an important procedure for this product!


 Do not disassemble the machine for repair or adjustment without authorization.


 Do not replace the power cord without authorization.


 AC power must use a three-core cable with a grounding wire, and the grounding wire must be correctly installed.


 Do not place the charger in a location exposed to rain.

 The DC plug and socket must be securely connected; if damaged or loose, replace immediately.

 If the charger produces abnormal sounds or smells during normal operation, unplug it immediately.

 For repairs, please contact our company promptly, and we will resolve the issue as quickly as possible.

 Do not extend or replace the output cable.

 Do not block the charger's air inlet or outlet.

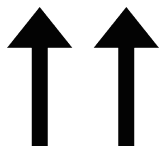
 When moving the charger, disconnect the power cord and charging plug.



The battery voltage must match the nominal voltage of the charger (e.g., a 72V charger may only charge a 72V battery).



To avoid damage, do not pull, twist, or shake the charging cable.



Place Upright



Protect from Rain



Do Not Disassemble

4.1 General Safety Instructions



Danger!

※ Before any maintenance or repair, always turn off the power and remove the key from the main power switch.

※ This machine must be operated by professionally trained personnel only. Children, disabled persons, and untrained individuals are strictly prohibited from using this machine.

※ Keep the battery away from sparks, flames, and fire sources.

※ Do not wear accessories while operating the machine.

※ Do not use the machine in hazardous, flammable, or explosive environments, including gases, liquids, or vapors.

※ Charge the battery in a well-ventilated area, keeping the battery cover open and away from open flames.

For Professional Users & Industry

※ This machine is intended solely as a cleaning tool. Any use beyond the scope described in this manual is not covered, and we will not assume responsibility for any resulting consequences.

※ The machine is suitable for general debris only. Do not attempt to sweep ropes, belts, high-temperature objects, standing water, flammable or toxic substances, as this may entangle, burn, or damage the main brush and side brushes, preventing normal operation.

※ This machine must be operated by trained personnel only. Minors and untrained individuals are strictly prohibited from driving it.

※ Do not operate the machine under the influence of alcohol, and do not exceed the recommended speed.

※ There is a risk of tipping over when driving on steep slopes or turning at high speed.

※ When the machine is not in operation, keep unauthorized personnel away from it.

※ While the machine is working, keep the operating speed below 10 km/h, and perform dust shaking every 15–30 minutes to achieve optimal cleaning performance.

※ Ensure the battery is charged in a well-ventilated area. After the machine stops working or when a low-voltage warning occurs during operation, charge the battery promptly to extend its lifespan.

※ After finishing work, remove the key to prevent unauthorized use.

※ Do not use the machine on wet floors or in rainy conditions.

Danger!

※ Before performing any maintenance or repair, carefully read the maintenance and repair instructions.

※ Keep loose clothing, hair, fingers, and any other body parts away from the machine's air vents and all moving parts.

※ Do not smoke while the battery is charging.

※ When connecting the battery charger to the main power line, ensure that the voltage and frequency match those specified on the nameplate.。

※ Do not charge the battery if the charger cable is damaged. If the machine is damaged or has fallen into water, contact our after-sales service center.。

※ Do not pull the machine using the charger cable, and do not use the charger cable as a handle. Be careful not to pinch the charger cable when closing doors, avoid dragging it over sharp objects, and never use the charger cable to operate the machine.

※ Keep the battery charger cable away from heat sources.

※ To reduce the risk of fire, electric shock, or personal injury, do not leave the machine unattended while it is plugged in.

※ To avoid electric shock, do not place the machine outdoors; store it indoors.

※ Do not treat the machine as a toy, and ensure that children stay away from

it.

- ※ Operate the machine according to this manual. Only use accessories provided by our company.
- ※ Remember to remove the key when the machine is not in use.
- ※ Do not operate the machine on slopes exceeding the specified gradient.
- ※ Do not wash the machine directly with running water to avoid water pressure damage, and do not use corrosive cleaning agents.
- ※ Do not use the machine in excessively dirty areas.
- ※ Follow the rules carefully to prevent injury to people or children and to avoid damage to the machine.
- ※ Do not use the machine as a transport vehicle.
- ※ When the machine is stationary, do not let the brushes continue to rotate to avoid damage to the floor and brush wear.
- ※ In case of fire, use a powder extinguisher; do not use water.
- ※ Avoid hitting racks or shelves from which objects could fall.
- ※ Adjust the machine's driving speed according to the adhesion of debris on the floor.
- ※ Do not modify the machine's safety devices; maintain the machine according to the maintenance instructions.
- ※ Do not move or alter the nameplates on the machine.
- ※ When a malfunction occurs, ensure that it is not caused by a lack of regular maintenance. If needed, seek assistance from our company's service center.

- ※ If any parts need replacement, you may purchase spare parts from our after-sales service department.
- ※ To ensure proper operation and safety, maintenance must be performed by trained personnel or the service center according to the relevant sections of this manual.
- ※ When dismantling the machine for disposal, supervision is required. Some hazardous materials (such as used batteries, waste oil, and plastics), even if compliant with standards, should be sent to designated disposal centers.

4.2 Safety Instructions for Operation



Note:

This sweeper must be operated by designated personnel on relatively flat surfaces such as concrete, asphalt, or tiles, for cleaning dust or light debris.



Note:

During operation, the vibration device should be activated as needed, depending on the amount of debris on the surface. If the filter becomes blocked or full, the machine will not be able to collect debris. The dustbin must be emptied after each use or when full.



Caution!

After every hour of operation, stop the machine for 1 minute to shake off dust and empty the dustbin.

4.3 Safety Instructions for Driving



Note:

When the machine stops, lift the suction plate and side brushes to prevent deformation.



Caution!

If the machine needs to be pushed or towed while turned off or malfunctioning, ensure the speed does not exceed 5 km/h, and disconnect one of the drive motor wires.

4.4 Safety Instructions for the Battery

1. Avoid leaving the battery in a low-voltage state; charge it as soon as possible.
2. This is a maintenance-free lead-acid battery; no electrolyte addition is required.
3. To prevent leakage, keep the battery dry and clean, especially removing contaminants such as metal dust.
4. Do not place metal objects (e.g., tools) on the battery to avoid short circuits and damage.
5. Follow local regulations when recycling the battery.
6. Do not use open flames when handling or transporting the battery.
7. The charging room should be well-ventilated.

8. Do not connect or disconnect the battery while the key switch is in the ON position.
9. Before removing or installing the battery, first disconnect the negative (-) battery cable, then the positive (+) cable. When reconnecting, ensure correct polarity; incorrect connection may damage electrical components.
10. Avoid direct contact between the positive and negative terminals, as this can cause a high-current short circuit, generating excessive heat and potentially causing fire.

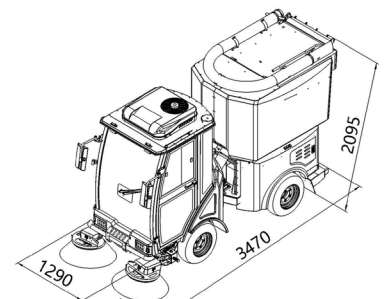
4.5 Safety Instructions for Vehicle Transportation

Complete Machine Shipment

The machine is packaged and secured on a special pallet and can be moved using a forklift. The machine must be placed in a single layer only.

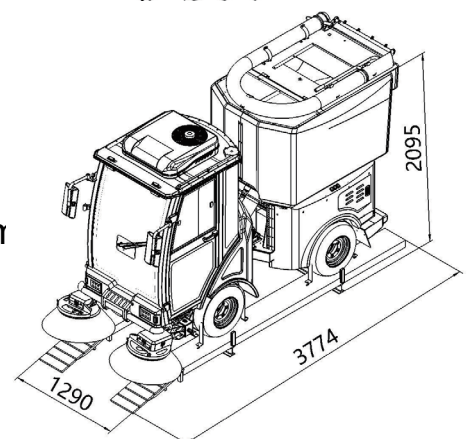
Overall Machine Dimensions:

Length: 3470 mm Width: 1290 mm Height: 2095 mm



Complete Packaging Dimensions:

Length: 3774 mm Width: 1290 mm Height: 2095 mm



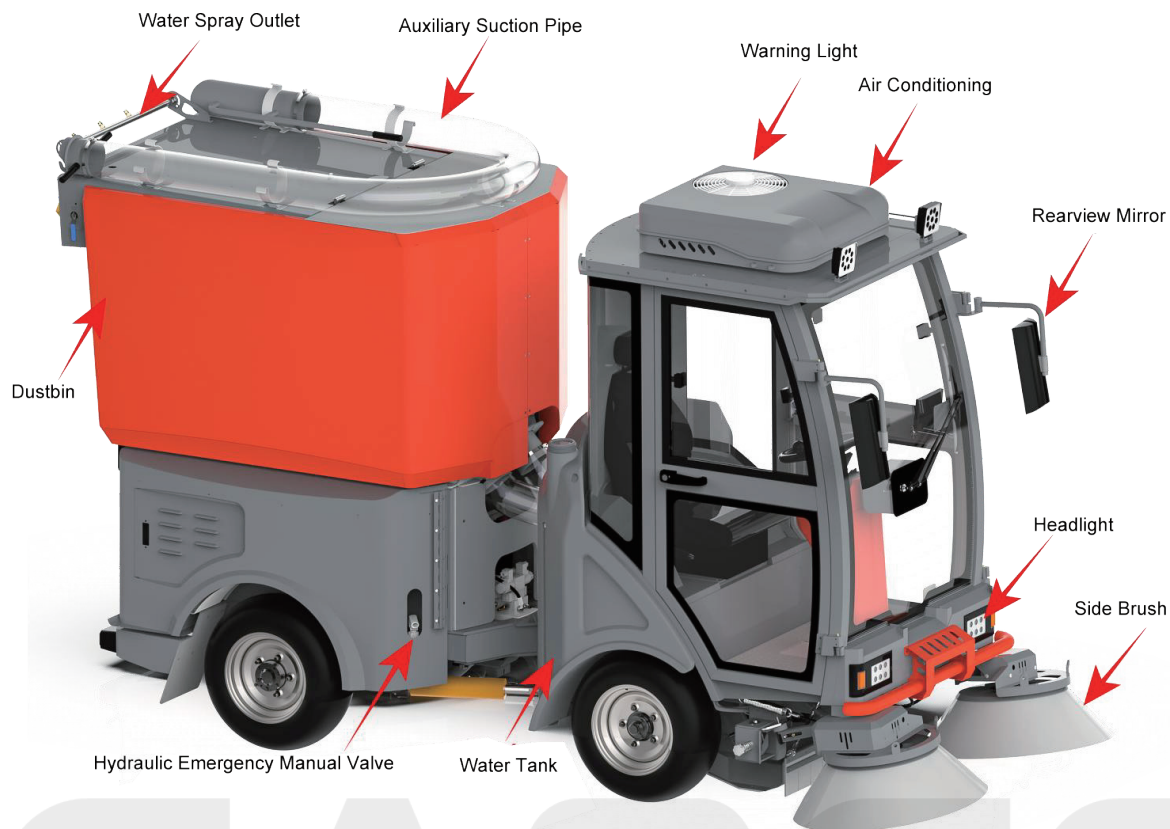
4.6 Safety Instructions for Maintenance

All necessary operations, maintenance, and repair procedures must be performed by trained professionals. Use only original parts from our company. For purchasing parts or requesting repairs, please contact our after-sales service center and provide the machine model and chassis number in detail.

By combining daily and weekly maintenance routines, potential issues with the sweeper can be identified in time, ensuring it remains in good working condition and maintaining optimal efficiency.

Additionally, proper maintenance not only guarantees the machine's operational efficiency but also significantly extends its service life. Developing this good habit is highly recommended!

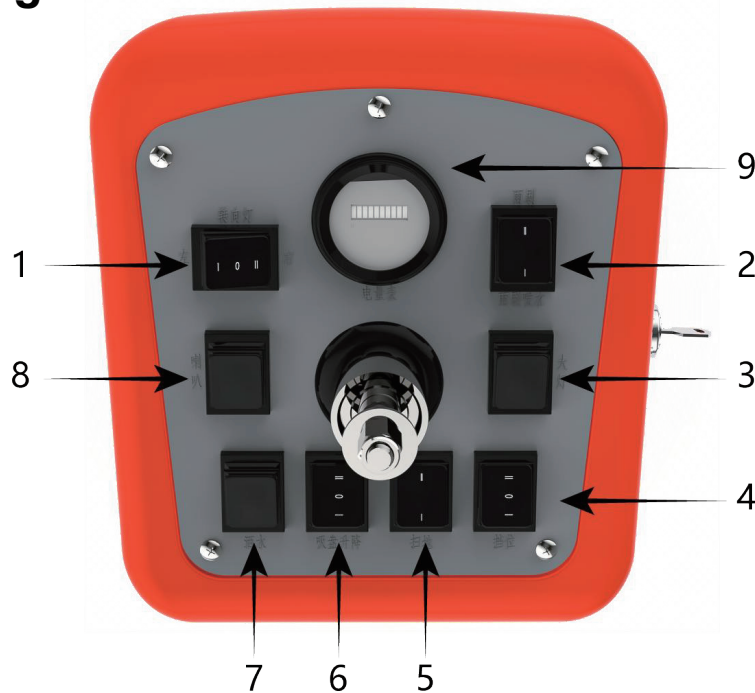
5.1 Equipment Appearance



5.2 Dustbin Power Port / Switch



5.3 Steering Wheel Console



1. **Turn Signal:** Waterproof rocker switch.
2. **Wiper:** Waterproof rocker switch (pressing the reset position returns the wiper blade to its initial state).
3. **Headlight:** Waterproof rocker switch.
4. **Gear Selector:** Waterproof rocker switch (press forward for forward motion, middle for neutral, backward for reverse).
5. **Sweeping Function:** Waterproof rocker switch (activates side brushes and suction system simultaneously).
6. **Squeegee Lift:** Waterproof self-reset rocker switch (forward to lift, backward to lower).
7. **Water Spray:** Waterproof rocker switch.
8. **Horn:** Waterproof self-reset rocker switch.
9. **Battery Indicator:** Circular LED bar display.

5.4 Seat



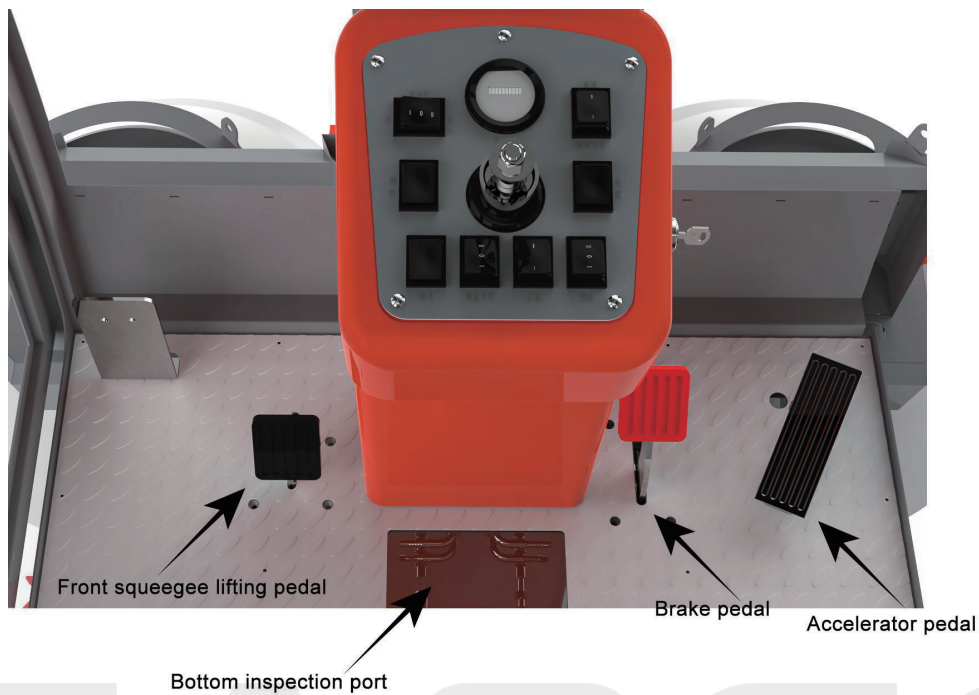
1. **Headrest:** 7-level height adjustment, adjustable upward by 140 mm, 20 mm per level.
2. **Armrest:** Fine-tunable adjustment for comfort.
3. **Slide Rail:** Total travel distance of 200 mm — 100 mm forward and 100 mm backward.
4. **Adjustment Handle:**

Turning the handle adjusts seat load capacity between **50–130 kg** (clockwise to increase, counterclockwise to decrease).

Holding the handle while pushing or pulling the seat cushion allows height adjustment in **three levels**, with a total range of **60 mm**.

5. **Suspension Damping:** Provides shock absorption for a smoother ride.

5.5 Pedals



5.6 Multimedia



1. Power Switch: Press once to turn on, press and hold to turn off. When on, press once to switch modes (Radio mode / MP3 mode).
2. Volume Up.
3. Volume Down.

4. Previous Channel / Previous Track.
5. Next Channel / Next Track.
6. Mute.
7. Display Screen.
8. USB Port.

5.7 Air Conditioning



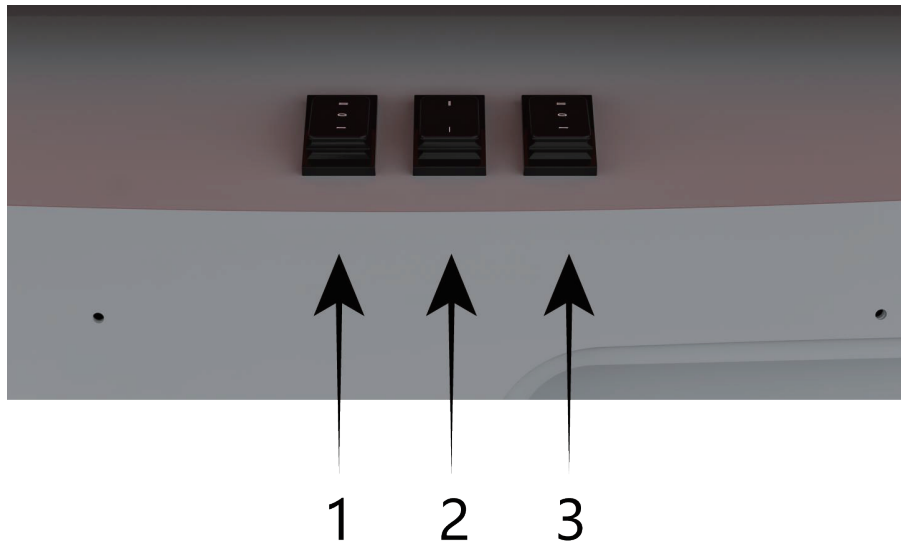
1. Power: Press once to turn on, press and hold to turn off.
2. Mode Switch: Toggle between cooling and heating modes.
3. Fan Speed Up.
4. Fan Speed Down.
5. Temperature Up.
6. Temperature Down.

5.8 Suction Power and Side Brush Speed Adjustment



1. **Side Brush Speed Adjustment:** Rotate clockwise to increase speed, counterclockwise to decrease speed. Adjust to the appropriate speed according to different working conditions.
2. **Suction Power Adjustment:** Rotate clockwise to increase suction, counterclockwise to decrease. Adjust to the suitable level based on different working conditions.

5.9 External Buttons and Switches



1. **Dust Shaking Button:** Press up for automatic mode (work and stop intervals controlled by a timer relay), press down for manual mode (hold to operate, release to stop); middle position is OFF. (Note: After using manual mode, switch back to automatic mode manually.)
2. **Dust Discharge Button:** Press up to start, press down to stop. (Note: Must be in the OFF position during sweeping operations.)
3. **Dustbin Lift Button:** Press up to raise, press down to lower, release to stop. (Note: Wait until the dustbin fully stops before releasing the button.)

6 Starting

6.1 Preparation / Safety Check Before Starting

Caution!

Ensure that during normal operation, the cabin/side doors of the sweeper and the dustbin are properly closed. If the machine has been transported, check that all components have not shifted during transit.

6.2 Adding Water



Caution!

When filling the clean water tank, pay attention to the water level and avoid overfilling. (Use tap water only; water must be free of sand or other particles.)
When operating in subzero temperatures, drain all water from the tank and pipes to prevent freezing and damage to the high-pressure washer, water pump, water gun, and other components.

7 Operation

7.1 Driving Mode

Caution!

Ensure the side brushes and suction plate are in the raised position. Insert the key and turn it to the **ON** position.

Press the gear switch forward (forward gear) and press the accelerator pedal to drive the sweeper forward; press backward to reverse.

7.2 Sweeping Mode

Caution!

Turn on the sweeping switch and press down the squeegee lift switch. Observe through the inspection window until the squeegee stops descending, then release the switch. Adjust the side brush speed and fan suction according to actual cleaning conditions. (Note: The dust-shaking function should be in automatic mode.)

After sweeping is complete, turn off the sweeping switch and press up the squeegee lift switch. Observe through the inspection window until the squeegee stops rising, then release the switch.

Set the gear switch to forward, press the accelerator pedal, and the sweeper will begin cleaning.

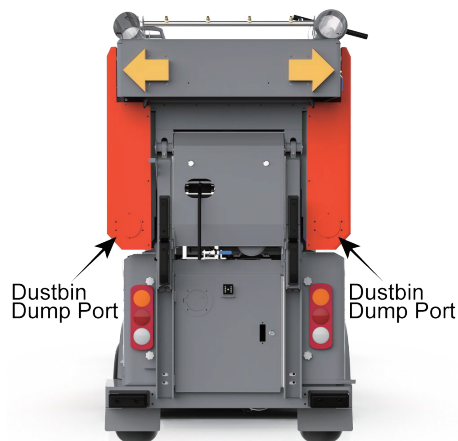
To sweep large debris (e.g., leaves, cigarette boxes), press the pedal to lift the belt, drive slowly to the target area, and the suction system will collect the debris into the dustbin. (Note: The size of large debris must not exceed the diameter of the suction pipe.)

7.3 Dumping Trash



Caution!

1. Release the accelerator pedal to stop the machine, engage the handbrake, turn off the sweeping switch, and lift the side brushes and squeegee.
2. Press the dustbin lift button to raise the dustbin and dump the trash. (Note: Ensure there is sufficient space behind the vehicle.)
3. Press the dust discharge button to open the dustbin compartment door and empty the debris.
4. Open the dustbin drain cover, remove the plug, and clean the inside of the dustbin (manual dust shaking can be used). Replace the plug and cover after cleaning.



5. Press the dustbin lower button to lower the dustbin to its original position and release the button.
6. The machine is now ready for the next operation.

7.4 Shutting Down the Machine



Caution!

After finishing work and before leaving the machine, perform the following steps:

1. Turn off the sweeping switch and raise the squeegee and side brushes.
2. Empty the dustbin and clean the dust compartment.
3. Remove the key from the power switch.

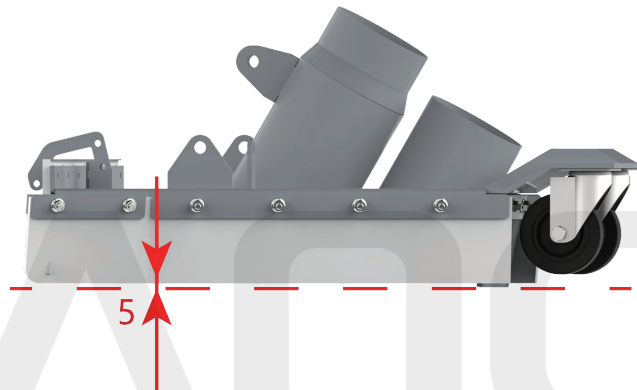
8 Transportation

8.1 Inspection / Adjustment of Auxiliary Equipment

Check the Squeegee Pressure on the Ground

1. Check whether the squeegee is at the correct distance from the ground:

- Operate the machine on a level surface.
- Keep the sweeping function active for a few seconds.
- The squeegee should maintain a distance of **5–10 mm** from the ground.



2. If the side brushes or squeegee wheels are excessively worn and cannot be adjusted, replace them following the instructions in the next section.

Caution!

If the squeegee distance from the ground is less than 5 mm, normal operation of the machine will be affected, and components may overheat, reducing the machine's service life. Perform the above checks carefully, and operate the machine only under the specified conditions.

9.1 Towing the Vehicle



Caution!

When the machine is turned off or malfunctioning and needs to be pushed or towed, ensure the speed does not exceed **3 km/h**.

10 Storage



Caution!

- Do not place containers with liquids on the machine.
- Store the machine at temperatures between **0°C and 40°C**.
- When operating the machine, the temperature should be between **0°C and 40°C**. If use is required in **-20°C to 0°C**, consult the supplier beforehand.
- Operating and storage humidity should be between **30% and 95%**.
- Do not store or operate the machine under direct sunlight, heavy rain, or extreme weather conditions.

11 Maintenance

11.1 General Instructions



Note: Maintenance operations must be performed with the machine stopped (key removed from the ignition). If necessary, disconnect the battery.

Therefore, carefully read the safety sections of this manual before performing any maintenance.

11.2 Maintenance Intervals



Note: After the first use (**8 hours**), the following must be checked:

1. Ensure all connections and fasteners are properly tightened.
2. Inspect visible components to confirm they are intact and undamaged.

11.3 Maintenance Operations



Note:

Maintenance operations must be performed with the machine stopped (key removed from the ignition). If necessary, disconnect the battery. Therefore, carefully read the safety sections of this manual before performing any maintenance.

11.4 Maintenance Schedule Table

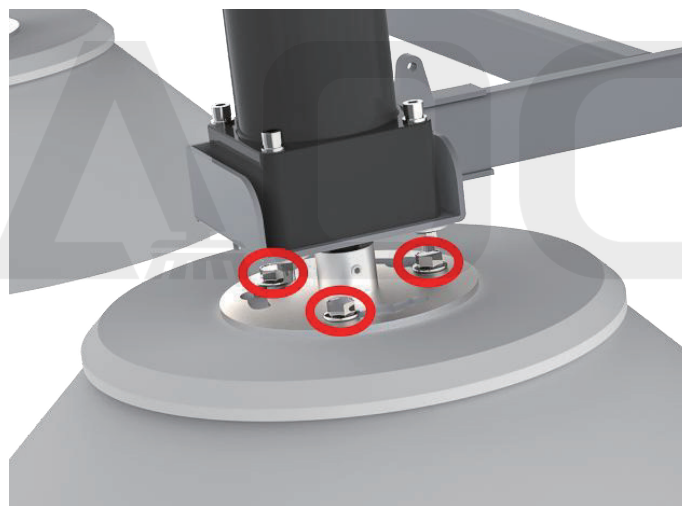
Maintenance Operations	Service Intervals	Every 10 hours (1)	Every 50 hours (1)	Every 100 hours (1)	Every 200 hours (1)	Every 400 hours (1)
Check and adjust the height of the side brushes and squeegee; inspect the squeegee and suction pipe.						
Check whether the side brushes are tangled with threads or fibers.						
Clean and inspect the dust filter for completeness.						
Check the height and operation of the squeegee blade.						
Add oil to the drive rear axle through the oil filler port.						
Check and clean the filter element using dust-shaking.						
Inspect and tighten screws and nuts.						
Periodically check the brake tension.						
Inspect the wear condition of the squeegee wheels and side brushes.						

Check and replace the carbon brushes of the side brush motor and dust-shaking motor.						
Store the charger in a safe, ventilated, and dry location.						

11.5 Replacement of Wear Parts

Side Brush Replacement

1. Removal and Replacement of Side Brushes

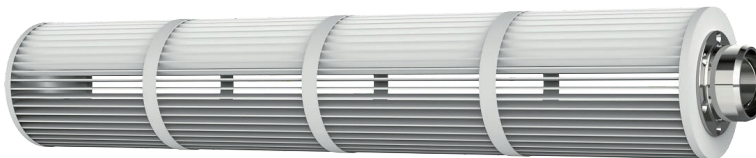


- Loosen the four screws inside the red circle in sequence, rotate the brush to the left until it comes out of the round slot to remove the side brush.
- During installation, rotate in the opposite direction to lock the brush in place, then tighten the screws.

Cleaning and Inspection of the Dust

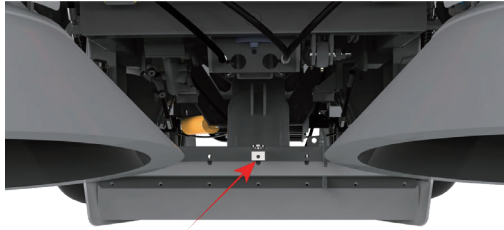


- Remove the side cover of the dustbin, then unscrew the end cap screws of the dustbin. Pull outward firmly to remove the filter assembly.

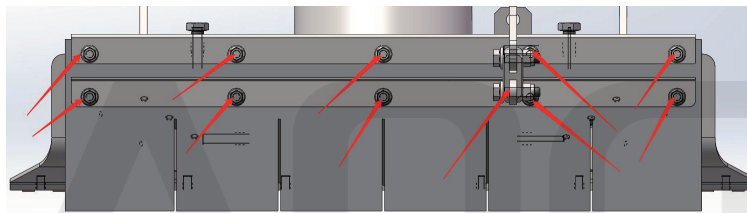


- Please clean the dust without damaging the filter cotton.
- When replacing the filter, apply lubricant to the filter oil seal.

Front Lift Squeegee Replacement



- The squeegee must be lowered before replacing the front lift squeegee.
- Engage the handbrake before replacing the front lift squeegee to ensure the vehicle does not move.



- Remove the screws in the order indicated by the arrows, then take out the old squeegee and replace it with a new one.

12 Troubleshooting

Problem	Fault Analysis	Solution
The machine shows no power	Main circuit breaker tripped	Turn on the main circuit breaker
	No voltage output from the battery	Charge the battery; replace it if necessary (if not used for a long time, please charge it once every two months).
	Power meter damaged or connector loose	Check whether the connector is properly plugged in; replace the power meter if necessary.

The machine does not move properly	Does not move	Differential damaged	Travel motor operates normally		Replace the gearbox gears.
			Travel motor does not operate normally	Motor burned out	Replace the motor
				Fuse blown	Replace the fuse
				Loose wiring	Check the wiring
				Controller or accelerator pedal damaged	Replace the controller or accelerator pedal
				Handbrake travel switch damaged	Replace the handbrake travel switch
				Gear position switch damaged	Replace the gear position switch
	Forward only / backward only	Main switch damaged		Replace the main switch	
		Accelerator pedal damaged		Replace the accelerator pedal	
	飞车	Accelerator pedal damaged		Replace the accelerator pedal	
Controller damaged		Replace the controller			
Brush and fan malfunction	Switch damaged		Replace the switch		
	Side brush motor damaged		Replace the side brush motor		
	Fan motor damaged		Replace the fan motor		
	Turn the side brush motor speed knob to the slowest position		Rotate the side brush motor speed knob		
	Turn the fan motor speed knob to the slowest position		Rotate the fan motor speed knob		
	Circuit breaker tripped		Turn on the circuit breaker		
	Poor cleaning performance	Brush worn		Replace the brush	
Squeegee worn		Replace the squeegee			
Suction pipe blocked		Clean the suction pipe			
Squeegee not lowering properly		Check the squeegee position			
Filter clogged		Shake off dust for 2–10 minutes			
Fan motor running in reverse		Check the fan wiring			
Fan motor not working, loose wiring		Check the wiring			

	Fan motor not working, motor burned out	Replace the motor
	Filter shaker motor not working, carbon brush worn or motor damaged	Replace the carbon brush or motor
Large leaves or debris not picked up	Working speed too fast	Reduce the driving speed during operation
	Brush pressure too low	Adjust the brush pressure
	Brush bristles deformed or tangled with thread	Remove threads or wires
Dust left on the floor / from side skirt	Filter clogged	Clean the filter
	Dust skirt damaged	Check the dust skirt and replace if damaged
Sweeping incomplete, leaving paper scraps, leaves, or other debris	Front dust board lifting mechanism not working	Repair the dust board and use the foot pedal to enable lifting and lowering
Brush wears out too quickly	Brush pressed too tightly	Reduce brush pressure
	Very rough floor surface	
Dustbin leaks debris	Dustbin seal damaged	Replace the seal
	Dustbin door not closed	Close the dustbin door
Battery cannot be charged	Battery burned out	Replace the battery
	Charger damaged or faulty	Check the charger input current
	Battery terminal loose	Check and tighten the battery terminals
	Battery severely under-voltage	Replace the battery, contact the manufacturer
Battery discharges too quickly	Insufficient charging time	Increase charging time
	Battery damaged	Replace the battery
No water or low water flow from the nozzle	Nozzle clogged	Clean the nozzle
	Check if the diaphragm pump is working properly	Clean or replace the diaphragm pump
	Water filter cleaning	Remove the water filter and clear debris

No water pressure from spray bar or high-pressure water gun	High-pressure plunger pump malfunction	Check the high-pressure pump or replace it
	Water leakage in the system, high-pressure water gun damaged	Check the water system and replace the high-pressure water gun
Steering is heavy	Hydraulic oil leakage or oil pump has no pressure	Check the oil circuit, oil pump motor operation, and oil pump outlet pressure
	Steering cylinder leaking or damaged	Replace the steering cylinder seal kit or the cylinder
	Steering gear damaged	Replace the hydraulic steering gear
Weak lifting of the dustbin or suction cylinder	Oil circuit leaking or oil pump has no pressure	Check the oil circuit, oil pump motor operation, and oil pump outlet pressure
	Cylinder leaking or damaged	Replace the cylinder seal kit or the cylinder
	Solenoid control valve assembly malfunction	Check the valve assembly or replace the control valve assembly

13 Warranty Instructions



Note:

The following issues occurring during the warranty period do not constitute a product quality problem of our company.

1. Damage to the charger caused by improper operation or misuse.
2. Damage to the charger caused by unauthorized opening of the charger without the company's permission.

3. Damage to the machine caused by improper handling, such as bumps, collisions, or drops.
4. Damage to the charger caused by water ingress or moisture.
5. Damage to the charger caused by sudden high voltage in the power supply (exceeding 10% of the national standard).
6. Damage caused by severe pulling or tension on the input or output cables.
7. Battery unable to be fully charged due to unauthorized extension of the input or output cables.

**Note:****Warranty will not apply under the following usage conditions:**

1. Mechanical damage or malfunction caused by not following the maintenance manual for use, maintenance, or care.
2. Significant damage to the machine's exterior or structure caused by improper human operation.
3. Disassembly or modification without the approval of the original manufacturer.
4. Damage caused by weather or other force majeure events.
5. Consumable parts (brushes, filters, air ducts, squeegees, squeegee wheels, sealing strips, etc.).
6. Exceeding the warranty period of 1 year or usage over 1,500 hours.

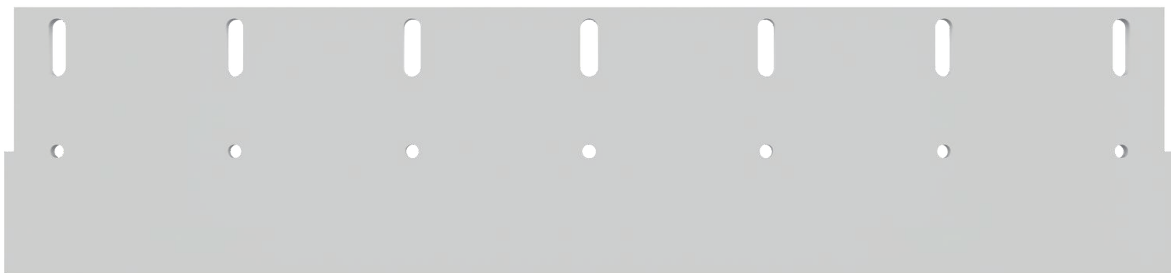
7. Tipping or other malfunctions caused by worn drive brake pads not being replaced.

14 Consumables List

1. Side brush



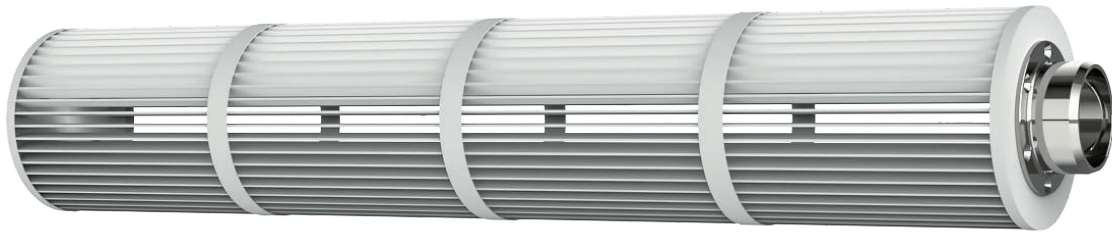
2. Front squeegee blade



3. Squeegee wheel



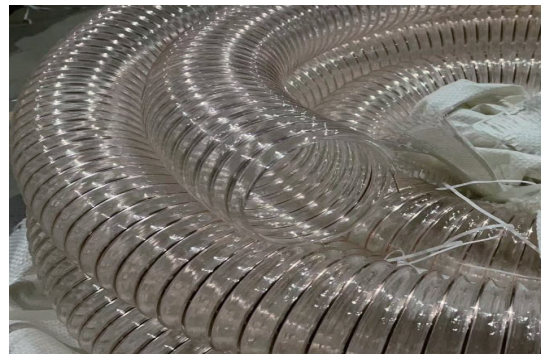
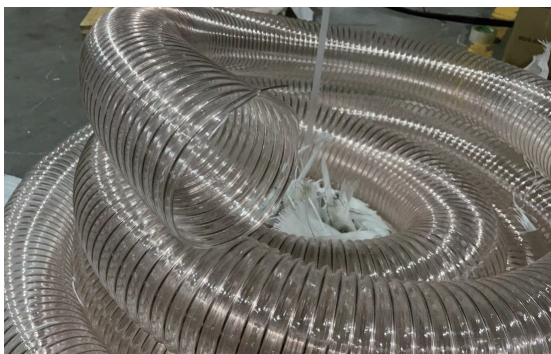
4. Filter element



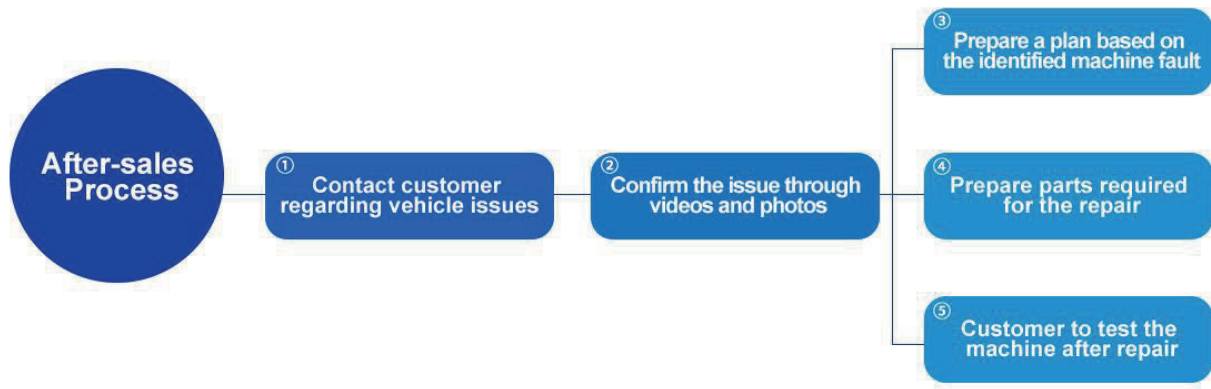
5. Tire



6. Suction and exhaust ducts



15 After-sales Process



Service Commitment

GAOGE Cleaning Equipment — After-Sales Service Policy

(1) Lifetime On-Site Service (Within 100 km)

Zhangjiagang GAOGE promises lifetime free on-site service and maintenance labor for customers located within 100 km of any city where our headquarters or a branch is located. (Limited to eligible locations only.)

(2) Yangtze River Delta (Jiangsu, Zhejiang, Shanghai)

For customers in the Yangtze River Delta region of East China, GAOGE provides lifetime quarterly maintenance from the date of purchase.

(3) Warranty-Period Support (Within 1 Year of Purchase) for Customers Located More Than 100 km Away

3.1 Factory Repair (Freight Covered by GAOGE):

If the equipment malfunctions, GAOGE will cover the transportation cost to ship the damaged equipment to our company for repair and return it to the customer.

3.2 Self-Repair With Parts Supplied:

If the customer can perform the repair but lacks the parts, GAOGE will cover the shipping cost to send new parts to the customer.

Customers may replace the parts themselves. (For accessories priced under RMB 3,000, parts may be shipped first and compensation settled afterward.)

After completing the repair, the customer must return the damaged parts to GAOGE so we can claim compensation from the supplier.

3.3 Damage Due to Misuse or Insufficient Maintenance:

If damage is caused by improper operation or inadequate daily maintenance, the customer will bear 50% of the equipment shipping and travel expenses, and accessory costs will be charged as usual.

If the same mistake occurs more than three times and causes equipment damage, GAOGE reserves the right to charge full fees or decline renewal of coverage.

Thank you for using GAOGE products.

Dear User:

Hello!

Thank you for using our products. Please keep this manual properly for future reference.

The following items are formulated according to safety regulations. Please strictly follow them to prevent hazards. This machine is only intended for floor cleaning, and any use beyond this purpose is at your own risk:

- ◆ Any inspection or maintenance must be performed after turning off the power switch and disconnecting the battery cables.
- ◆ Before using this equipment, the operator must familiarize themselves with the operating manual and safety instructions. Children and persons under the influence of alcohol are strictly prohibited from operating the machine.
- ◆ The battery must be kept away from sparks, flames, and flammable gases or materials to prevent explosions.
- ◆ Exercise caution when touching mechanical or electrical parts.
- ◆ This cleaning equipment must not be used in areas with flammable or explosive dust, liquids, or gases.
- ◆ The battery pack must be charged indoors in a well-ventilated area.
- ◆ It is recommended to use original manufacturer parts for this equipment.