



BOOTH

Concentration
Solve the exhibition plan



TIANLANG Advertising Product Manual



Shenzhen Tianlang Advertising Media Co., Ltd.

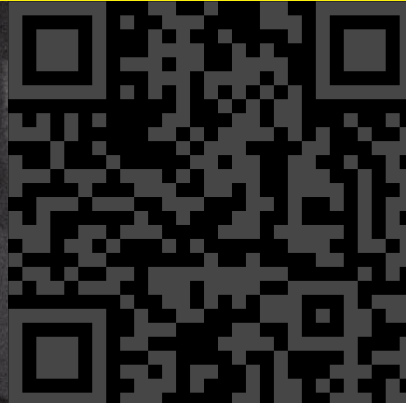
Address: Building 5, Jinshunli Industrial Park, Tongfu Road, Fudigang,
Pingdong Community, Pingdi Street, Longgang District, Shenzhen, 518117, China

Tel: +0755-84865849

Email: Davon@tianlanglightbox.com

Web: <https://www.tianlanglightbox.com>

Note: Color deviations and printing errors are all normal occurrences.
All the printed materials shown in our catalogue are for display and reference purposes only.



TIANLANG PROFILE



Introduction

Shenzhen TIANLANG advertising media company limit, a combined enterprise, is located in shenzhen, guangdong. We specialize in various light boxes and advertising materials. With a production area of 1,500 square meters, shenzhen tianlang advertising media company limit boasts a robust manufacturing capacity. Our 30 employees, including 2 highly skilled r&d

TIANLANG advertising light box main: modular booth, seg exhibition light box, folding light box, exhibition display equipment, printing banner printing, advertising poster printing, flag fabric printing, advertising light box production.

shenzhen TIANLANG advertising media co., ltd. Has established itself as a leading enterprise in the exhibition display industry with a strong focus on research and development, design, production, and sales. The company offers a wide range of products, including 120mm modular assembled light boxes, folding light boxes, table light boxes, twist towers, quick-installation booth solutions, and flat printing. With 15 years of experience in the industry, their professional team is dedicated to providing customers with comprehensive, one-stop.Service.



OEM

10+ Years ODM/
OEM Expertise

PROOF

Small-Batch &
Sample Welcome

120+

Modular Designs,
Free Configuration

1-STOP

One-Stop Global
Quality Solution



100% recyclable materials,
B1 fire-rated fabric graphic display

Modern quality management system
following international standards

LIST

01	TIANLANG Introduction	02
03	Booth Display	09
10	50mm Round Tube System	10
11	Seg Light Box Display	12
13	Pop Up Display	14
15	Quick Banner Display	16
17	Light Box Display	18
19	Foldable Booth Display	20
21	Hanging Ceiling Display	22
23	Exhibition Table Display	24
25	Fabric Frame Booth System	26

120MM TIANLANG LIGHT BOX



No Tools
Modular Style
Double Side
Carry Bag

Horizontal Profile x 2
Vertical Profile x 4
Support Pole x 1
Corner Part x 2
Connector Part x 2
Base Foot x 2
Bag x 1

	850×2000	850×2250	850×2500	1000×1500	1000×2000	1000×2250	1000×2500
Packing Size	1070x175x470mm	1320x175x470mm	1320x175x470mm	1070x175x470mm	1070x175x470mm	1320x175x470mm	1320x175x470mm
PC/CTN	1CTN	1CTN	1CTN	1CTN	1CTN	1CTN	1CTN
N.W.	11.7kgs	12.4kgs	13.2kgs	10.6kgs	12.1kgs	12.8kgs	13.6kgs
G.W.	16.0kgs	17.7kgs	18.5kgs	12.9kgs	16.5kgs	18.3kgs	19.0kgs

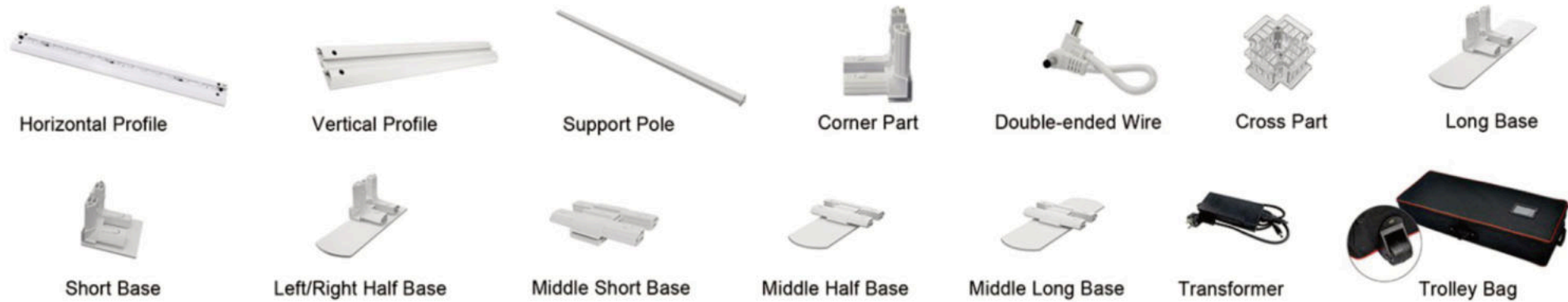
EXHIBITION ARTIFACT

Amazing Visual Effects

120mm thickness modular SEG light box system , tool-free quick installation . Modular accessories provide multiple combination options , quickly build background walls, promotion counters , portable booths or even meeting rooms.



STANDARD ACCESSORIES



Hot style layout (3*3M/10*10FT)



Hot
SALES CHAMPION
Background 300*250cm
Table 100*100cm



Hot
SALES CHAMPION
Background 300*250cm
arch 100*250cm
table 100*100cm

Hot style layout (6*3M/20*10FT)



Hot
Background 600*250cm
100*250cm*4
Table 100*100cm



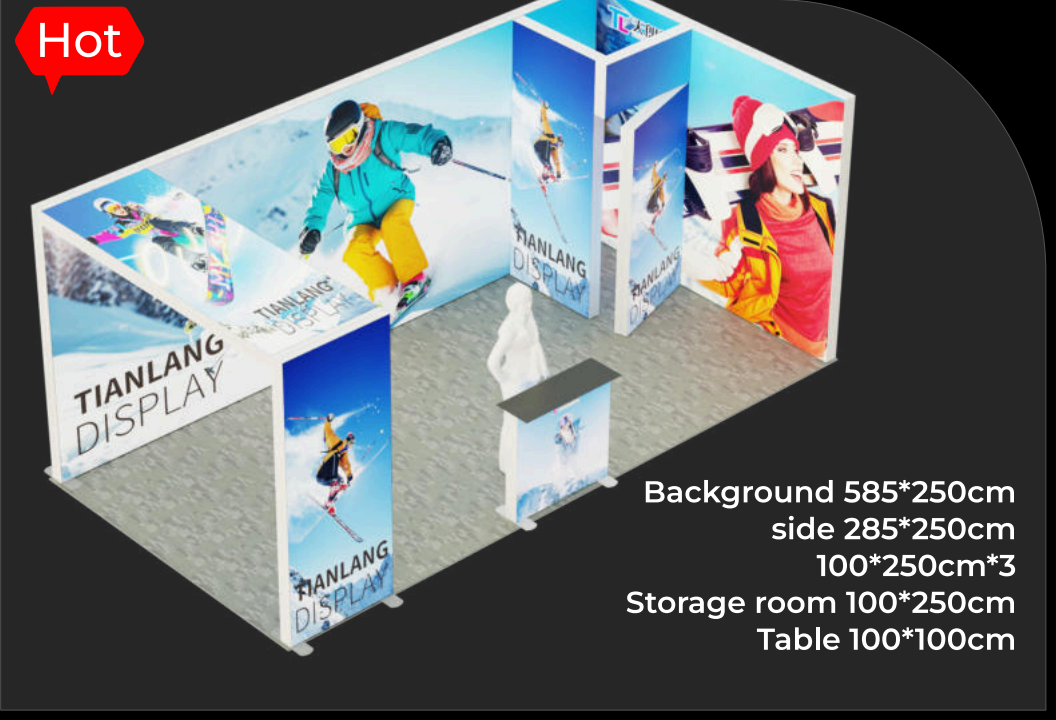
Hot
Background 585*250cm
side 285*250cm
Table 100*100cm



Hot
SALES CHAMPION
Background : 285*250cm*2pcs
table : 100*100cm



Hot
SALES CHAMPION
Background 285*250cm
arch 100*250cm
table 100*100cm



Hot
Background 585*250cm
side 285*250cm
Storage room 100*250cm
Table 100*100cm

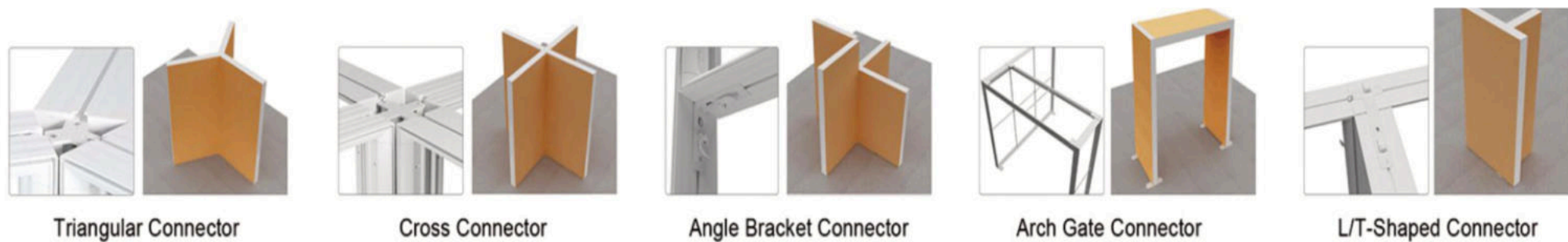


Hot
Background 570*250cm*1
Background 285*250cm*2
Table 100*100cm

TIANLANG LIGHT BOX BOOTH



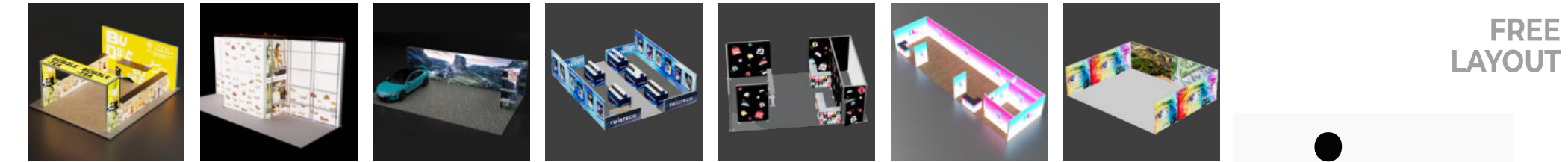
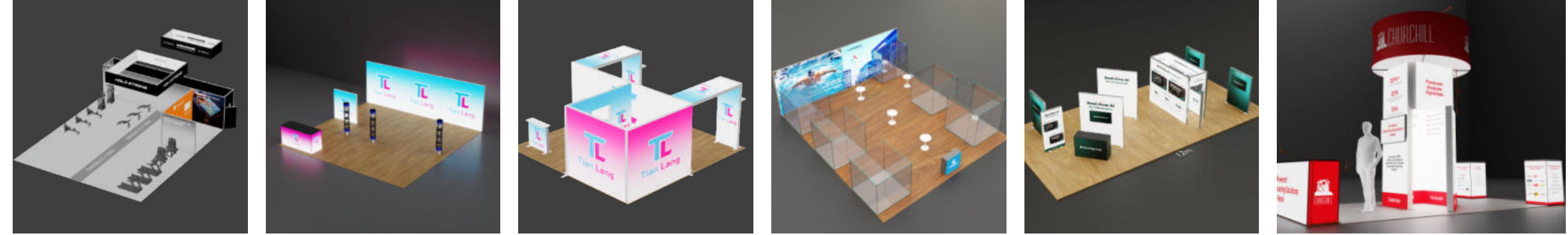
Perfect for booth entrances or aisles as standalone signage. Edge-lit LGP technology ensures $\geq 95\%$ uniformity, no dark spots. Tianlang Advertising offers base customization—embed your logo or add storage. RoHS certified for hassle-free EU export.



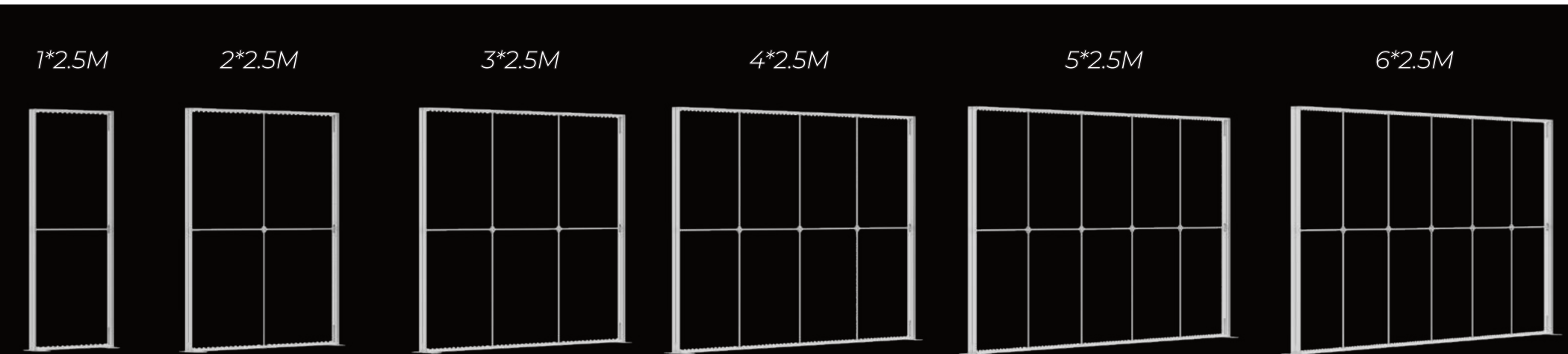
TIANLANG LIGHT Custom BOX BOOTH



The Combinational Design Of Tianlang Modular Light Box System Delivers Greater Design Flexibility, While Boasting Quick Installation And Strong Visual Impact. These Light Boxes Can Be Assembled Into Various Fixtures Including Backdrop Walls, Promotional Counters, Arches And Display Cabinets.



size Custom



Exhibition Accessories System

- Monitor Holder 显示器支架
- AA柱 AA Column
- 圆管置物架 Round Tube Storage Shelf
- 储藏间门搭扣 Storage Room Door Clip
- 直角托架 Right Angle Bracket
- 拱门 Arched
- 前后错位件 Misaligned parts
- 90度转角 90 Degree
- 资料盒挂件 Data Box Hanger
- 长底脚 Long Base Foot
- 中间长垫脚 Middle Long Base Foot
- 外置隔板 External Partition
- 磁性长搁板 Magnetic Long Shelf
- 储物室门组装 Storage Room Door

Round Tube Frame 50mm (Backlit) System

MULTIPLE SIZE

Mouldar combination

No tools needed

Black-out fabric

Backlit light

50mmTube frame backlit display is widely used in retail environments, exhibitions and other commercial spaces. Which sets new industry standards for modular slim premium

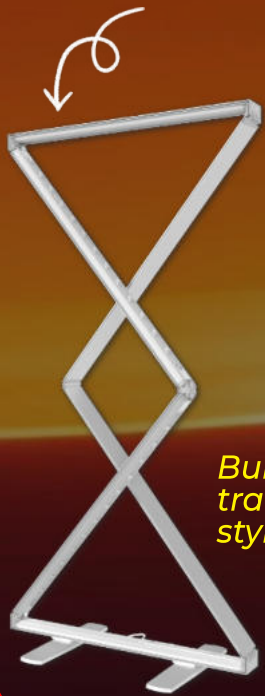
500X1000	1000X2000	1000X2250	1000X2438
2000X2000	2000X2250	2000X2438	
3000X2000	3000X2250	3000X2438	

FOLDED LIGHT BOX



TL-85Z Hot

85MM Aluminum



Built-in transformer style



10 SECONDS ASSEMBLY
FOLDED FEET
FOLDED STRUCTURE
MAGNETIC COMBINATION

The 85mm folded SEG light box system has the world-leading light box folding technology, which greatly improves the convenience of installation on the basis of traditional light box.



	850×2000	1000×2000
Packing Size	1200x400x220mm	1200x400x220mm
PC/CTN	1CTN	1CTN
N.W.	8.0kgs	8.5kgs
G.W.	10.5kgs	11.0kgs

Upgrade

Amazing fast

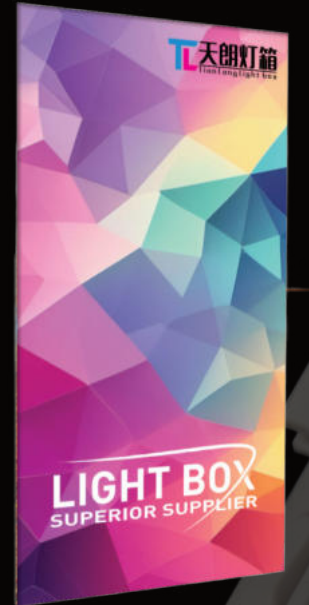
10 minutes...

Nylon bag packaging, but other packaging options

SEG 85MM-T ECONOMIC LIGHTBOX



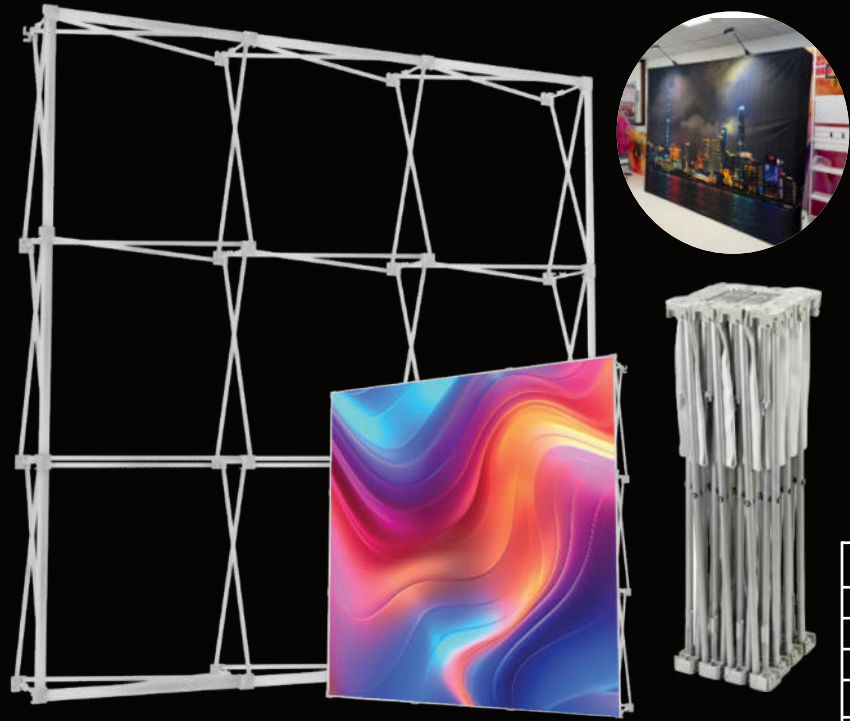
Aluminum profile
Hidden wire design
Self-locking structure
Easy installation with numerical markings



	850mm	1000mm
Product Size	850x2000mm	1000mm x 2000mm
Packing Size	1100 x 380 x 120mm	1050 x 330 x 170mm
PC/CTN	1 CTN	1 CTN
N.W.	7.9kgs	8.15kgs
G.W.	9.4kgs	9.65kgs

Crafted with an aluminum alloy frame, it offers durability and a modern aesthetic. With magnetic compatibility, two 85mm light boxes seamlessly combine, allowing for expanded configurations and creating a seamless, non-visible joint line. Unleash your creativity and design captivating large backgrounds with ease.

POP UP DISPLAY



TL-PUD01



**Classical style forever,
Incredibly easy,
Two minutes set-up
Without any tool**



2*3 150*224 1pc 20*25*88cm	3*3 224*224 1pc 25*25*88cm	4*3 297*224 1pc 30*25*88cm	4*4 297*297 1pc 35*30*88cm	5*3 370.5*224 1pc 40*30*88cm	5*4 370.5*297 1pc 40*30*88cm
6*3 450*224 1pc 40*25*88cm	6*4 450*297 1pc 45*30*88cm +83*28*15cm	7*3 525*224 1pc 45*25*88cm +83*28*15cm	7*4 525*297 1pc 45*30*88cm +83*28*15cm	8*3 590*224 1pc 88*45*31cm +83*28*15cm	8*4 590*297 1pc 88*50*31cm +83*28*15cm



**10 SECONDS ASSEMBLY
FOLDED FEET**



POP UP LIGHT BOX

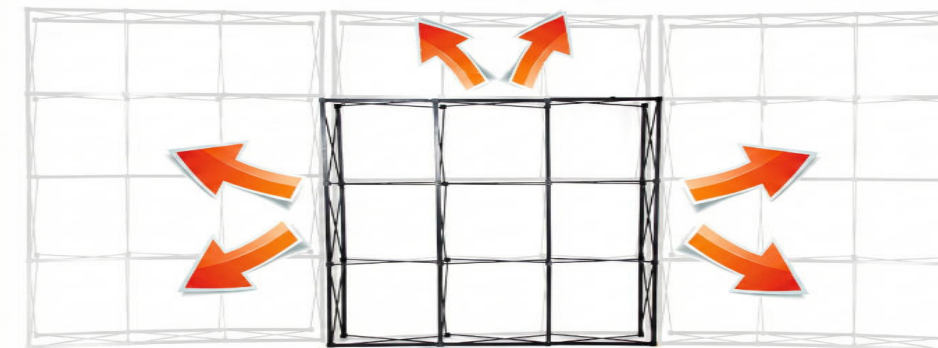


**Pull-Net Structure
Expands Into Frame
Lightweight And Portable
Multiple Sizes Available**

*Indoor exhibition displays.
Trade shows, business promotions.
Information display to walk-in customers.
Events & photographic backdrops.*



scan QR code to view
installation video



Tension fabric Booth



TL-Q01 Hot



Tension Fabric Graphics
Foldable Storage
Ultra-Portable Design
Suitable For Exhibitions

Complete booth system based on quick display technology, including background walls, display tables, shelves, etc. Quickly build a fully functional booth, suitable for frequent exhibitors.

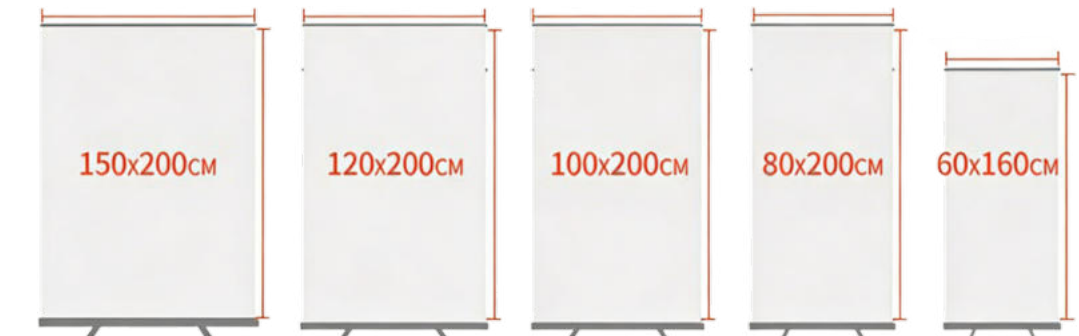


10 SECONDS ASSEMBLY
FOLDED FEET
FOLDED STRUCTURE
MAGNETIC COMBINATION



Classic roll-up banner stand with spring storage mechanism, graphics can automatically roll up. Portable design, suitable for exhibitions, conferences, stores and various occasions.

Roll Up Banner



- Bottom alu roller with 3M adhesive tape
- Chromed sidecaps
- Padded carrying bag included
- Single sided
- Right triangle shape with 1 grey leg
- Top T-shape snap rail

CHARACTERISTIC





ACRYLIC LIGHT BOX

Acrylic light box using high transparency acrylic panels with even and soft light. Beautiful appearance, suitable for high-end commercial display and interior decoration.



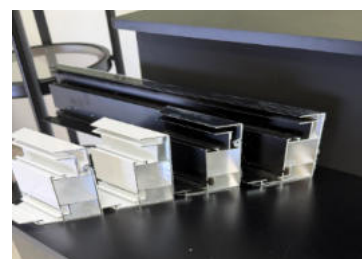
Back Panel

Rear sealing protection, optional wall-mount/hanging holes



Aluminum Frame

Structural support and heat dissipation, protects internal components



LED Light Source Module

Provides energy-efficient illumination with low heat emission and high CRI



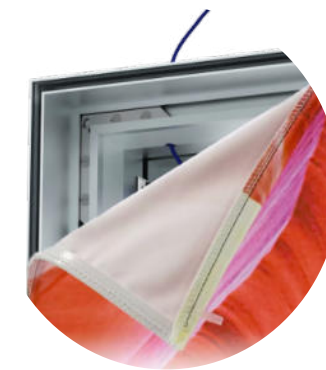
Acrylic Face Panel

Protects graphic direct-print substrate high transparency display



EDGE-LIT LIGHT BOX

Single-sided side-lit light box using LED side-lit technology with even light distribution. Single-sided display design, suitable for wall mounting and single-sided display needs.

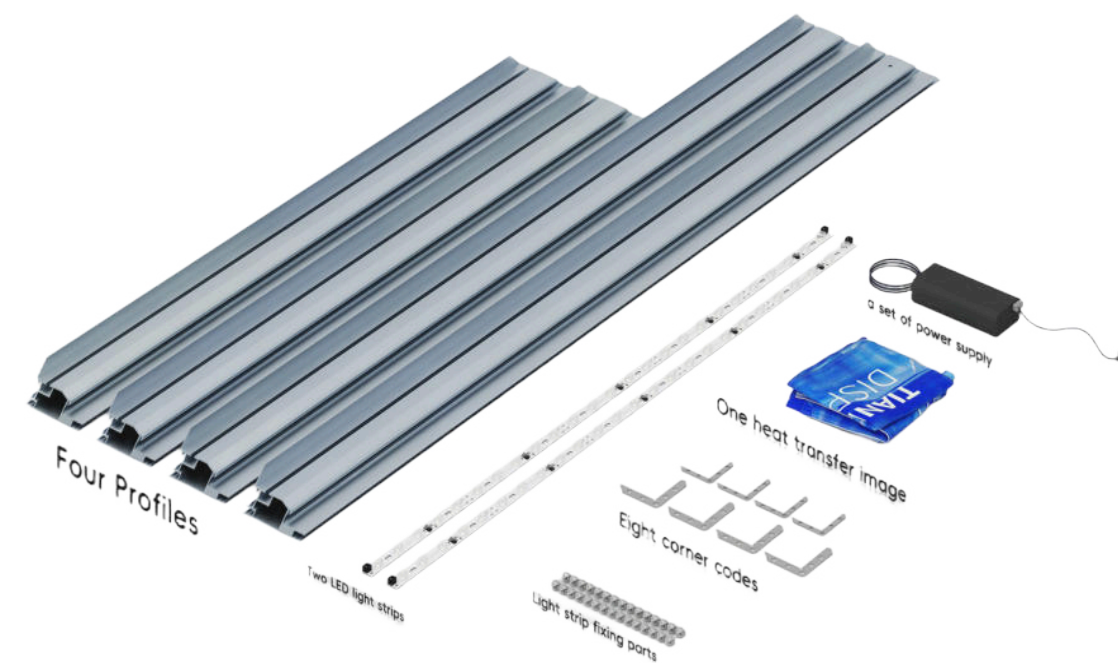
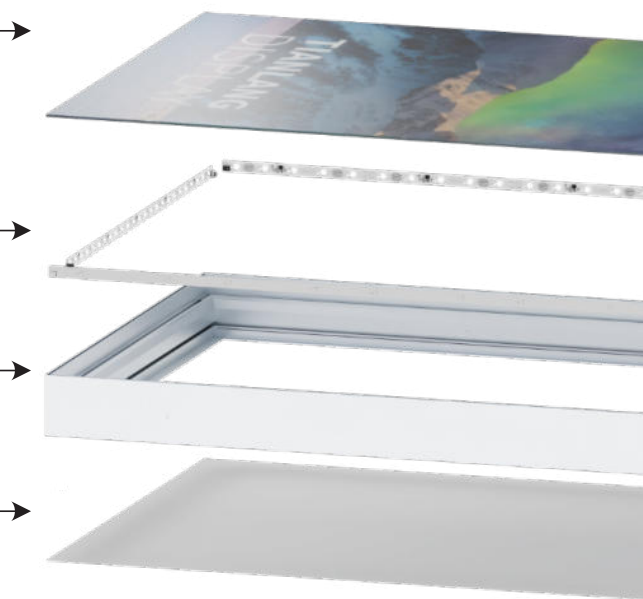


Lightbox poster

LED light strip

Aluminium lightbox frame

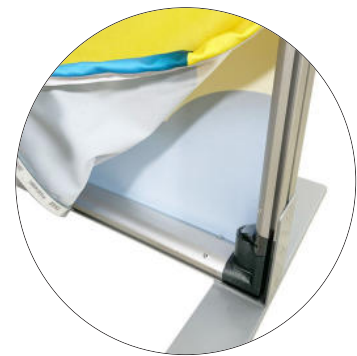
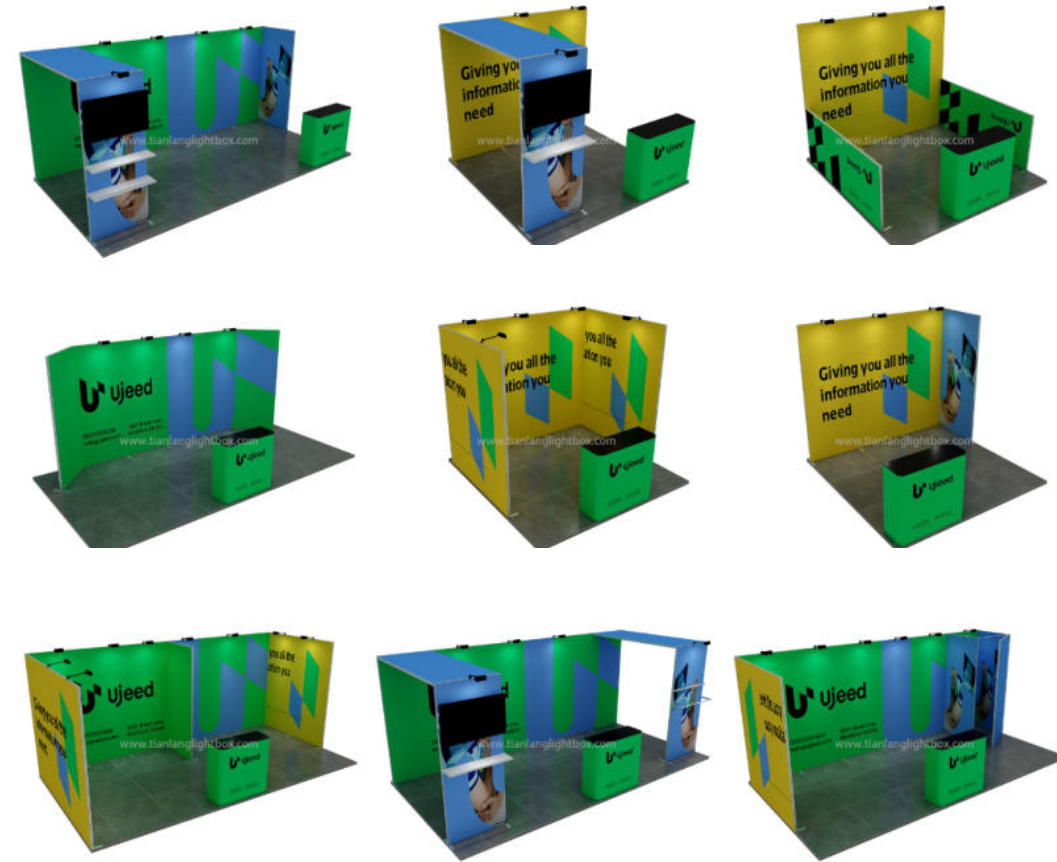
Back panel
(Black cloth back panel is optional)



X FABRIC FRAME BOOTH



X-fold fabric frame display with X-shaped support structure, foldable design for easy portability and storage. Suitable for exhibitions, malls, stores and various occasions.



Twister Tower Booth



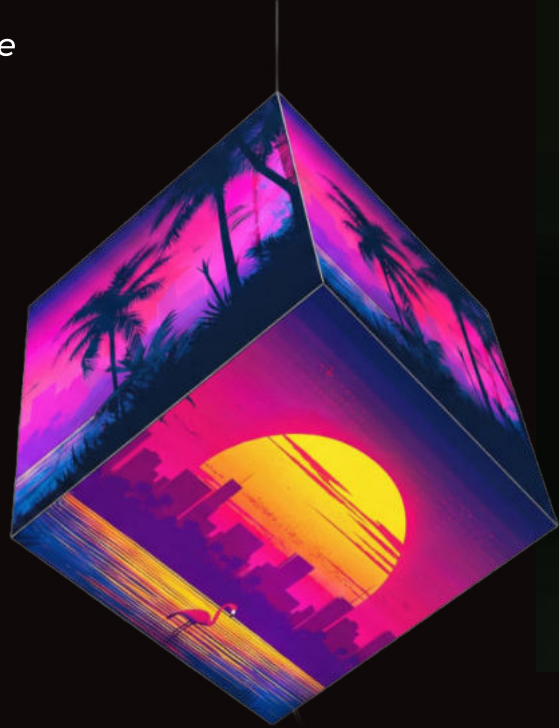
Rotatable design
Small footprint
Unique shape

Innovative twist tower display rack with spiral ascending structure and multi-level display space. Suitable for product display, brochure placement, unique shape attracts attention.

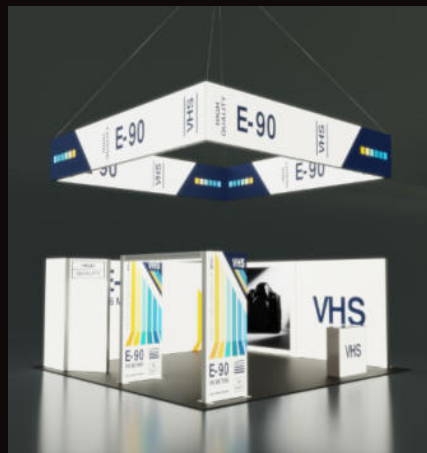


CEILING LIGHT BOX

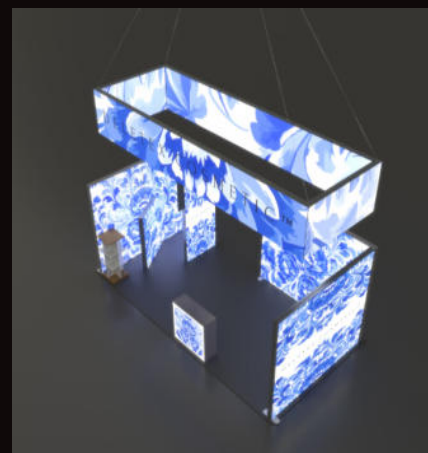
Ceiling suspended light box with 360-degree all-round display. Suitable for mall atriums, airports, exhibition halls and other high-altitude suspension use, maximizing brand exposure.



10x10FT



20x20FT



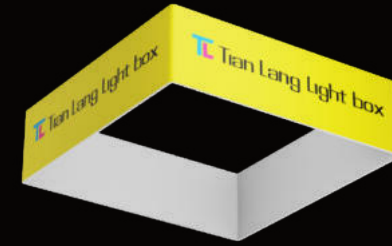
20x10FT



30x20FT

CEILING HANGING BANNER

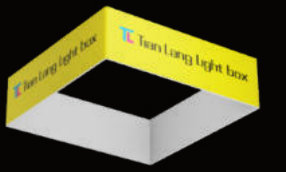
Ceiling suspended banner display system with collapsible aluminum frame and fabric graphics. Suitable for malls, exhibition halls, airports and other high-altitude suspension displays.



TL-SQ01



TL-CFA01



TL-SF01



TL-CP01



TL-SP01



TL-TF01



TL-CR01



TL-TAR01



TL-TAB01



EXHIBITION TABLE

SEG TABLE Hot



SEG dye-sublimation



- Seamless HD Fabric
- Lightweight Aluminum Frame
- Eco-friendly & Reusable



SEG Table features fabric with wrinkle-free graphic and 10-minute tool-free setup. Ideal for trade shows, roadshows, and retail.

SEG TABLE -FOLDING Hot



POP UP



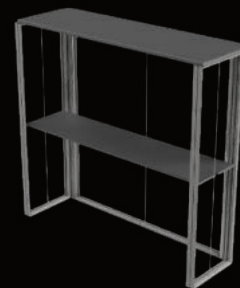
- Tool-free Fast Installation
- Stackable Design Saves Storage
- 100kg Ultra Load Capacity



Revolutionary folding structure keeps on frame permanently, avoiding repeated installation. Only 15cm thick when folded. Perfect for clients attending frequent exhibitions.

FOLDING -COUNTER

- One-Click Foldable Design
- Portable & Cost-effective Shipping
- 30-Second Setup

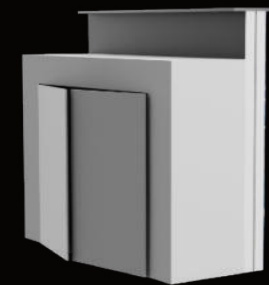


buckle structure, 3-minute installation, 25mm thick MDF tabletop. Flight case packing meets high-frequency international shipping needs, effectively reducing damage rates.



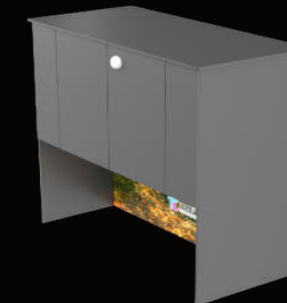
ISLAND COUNTER - Lockable Storage

- Progressive type mesa, set "show + storage + brand"
- Ladder + storage seal design, large storage space
- Security with lock, safe storage



CABINET TABLE - Lockable Storage

Cabinet features lock design for safe storage. Shelves with 2 height adjustments accommodate A4 documents, samples, etc.



size:101*101cm/3.3*3.3FT



POP-UP TABLE

Innovative one-tap opening design eliminates installation hassle. At only 1.5kg, perfect for street promotions, roadshows, temporary sales. Machine-washable graphic with low reuse cost. Includes shoulder bag, carry-on approved.



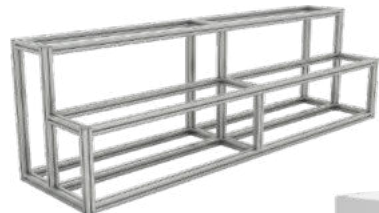
Pop-up Table



Hot

TIERED TABLE

- 3-tier Layered Display
- 360° Branding Exposure
- Ideal for Open Booth Center Layout



Three-tier design creates visual hierarchy, ideal for product series display. Independent graphics on each level for different themes.



SEG TABLE L-SHAPED

- Maximize Booth Space Utilization
- Dual-Sided Branding Exposure
- Modular Combinable System



L-shape design cleverly divides functional areas: product display on one side, business negotiation on the other. Dual graphic area increases 80%, suitable for standard booths ≥6m². Supports multi-unit combination into U-shape or rectangle layouts.



LIGHTBOX TABLE - STORAGE

- Illuminated Tabletop High Impact
- 30cm Deep Hidden Storage Cabinet
- Energy-saving Long-life LED
- Interchangeable Graphic



Hot



- Lightbox Thickness: 8cm
- Storage Size: 60*40*30cm
- LED Power: 48W (24V)



Lower lockable cabinet stores promotional materials and valuables.

CUSTOM TABLE Hot + Transparent Display Case

Customized according to product features, internal LED lighting highlights details precisely, meets international safety standards.

Function Acrylic frame



- Fully Custom Non-standard Size
- Integrated LED Accent Lighting
- Premium Product Display Choice



Custom picture

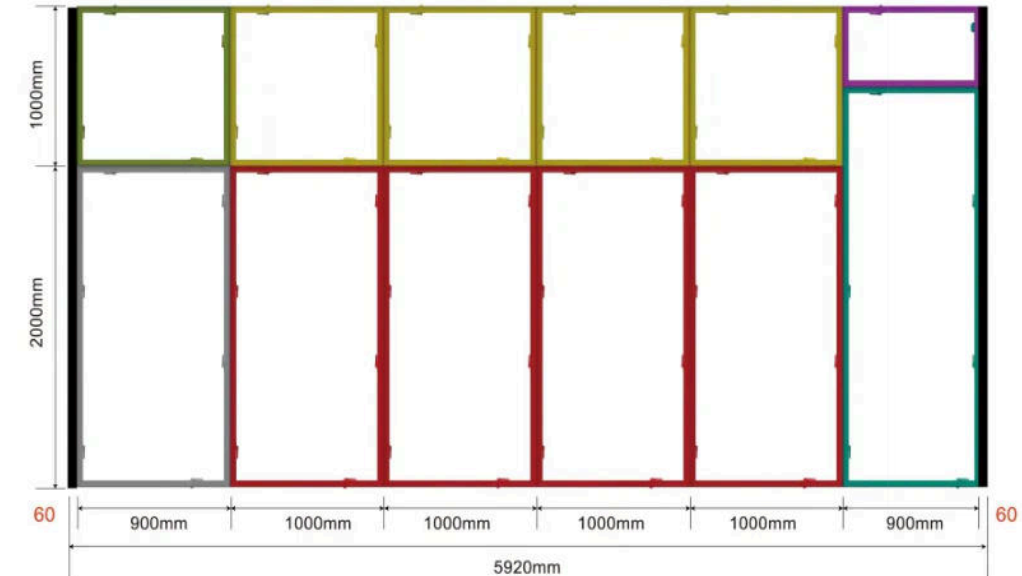
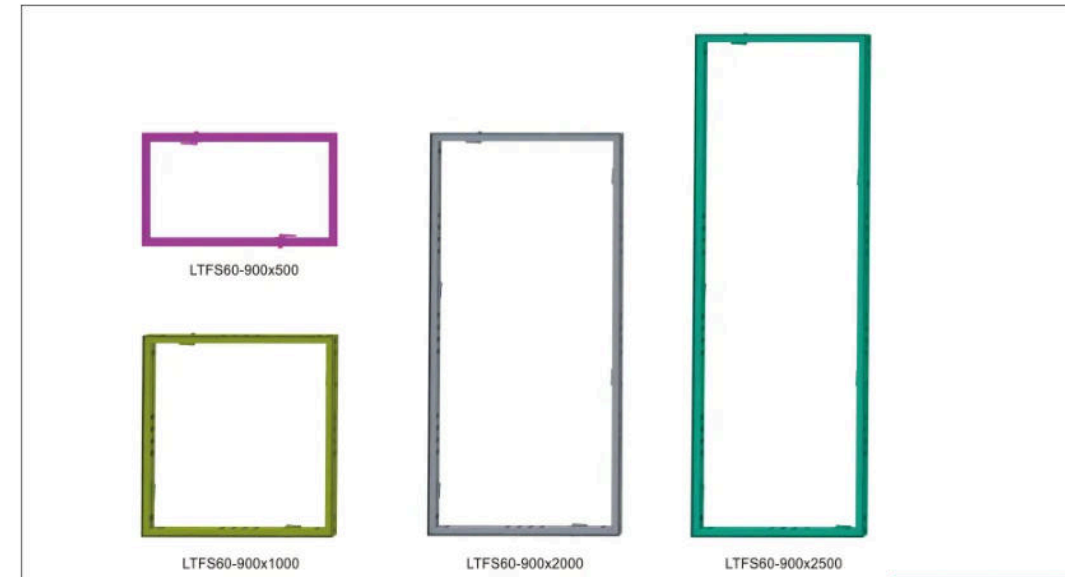


Custom Range: Size/Color/Function



62MM THICKNESS FABRIC frame booth system

Tool-free, Quick Installation, Large Size Graphic, Modular Size Frame, Accept Fabric Panel or Hard Panel,



RECTANGULAR FRAME SIZE	
TL62A-496*496	TL62A-992*992
TL62A-496*992	TL62A-992*1488
TL62A-496*1488	TL62A-992*1984
TL62A-496*1984	TL62A-992*2418
TL62A-496*2418	TL62A-992*2480
TL62A-496*2480	TL62A-992*2976
TL62A-496*2976	customize other

