

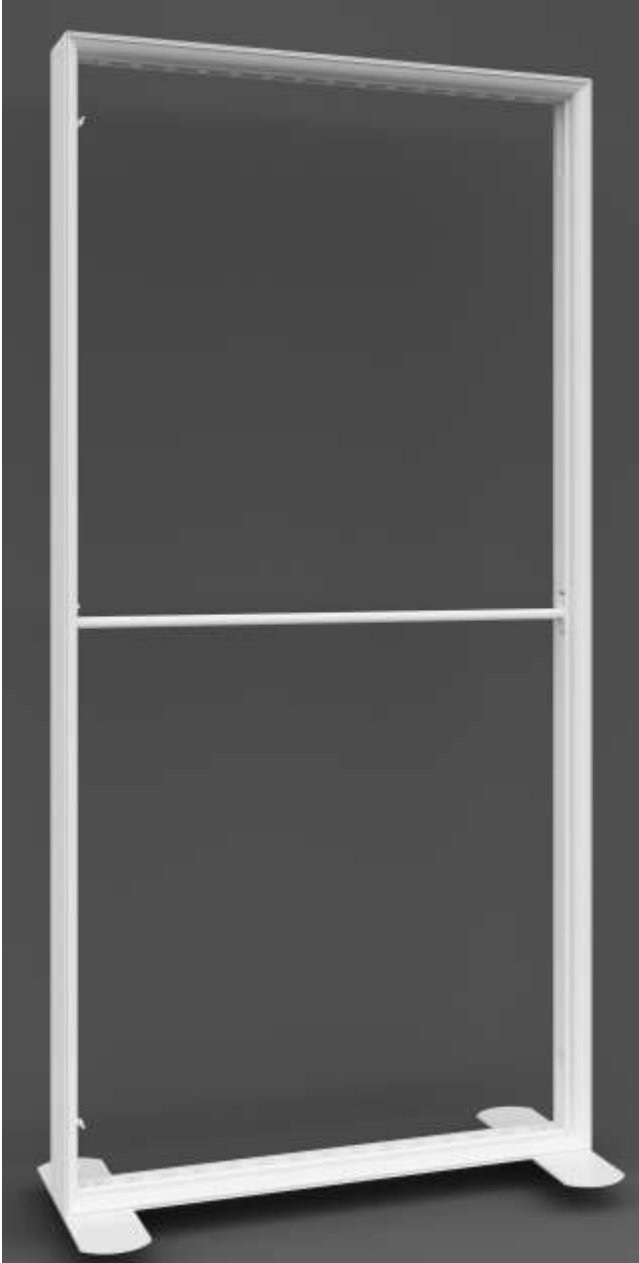
Plastic SEG Lightbox



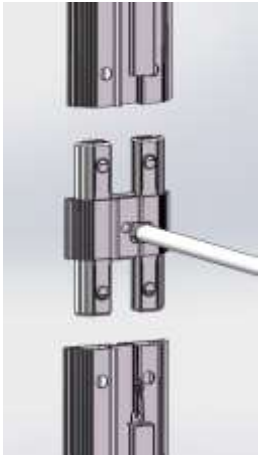
Characters:

- 1.Strong ABS plastic extrusion in120mm width ,which is fireproof and shatter -resistance
- 2.Tool-free.
- 3.Snap connection structure make assemble and dismantle easy and fast.
- 4.Stable and reliable with reinforced feet.
- 5.Variety size option (2/3/4/5/6M)
- 6.Portable to take
- 7.Patented design

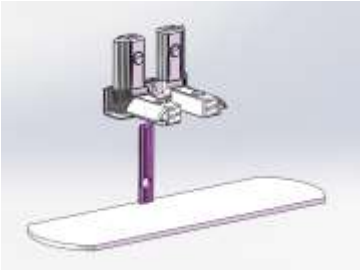
Product Details:



Wire hiding is a big advantage.



Snap connection



Reinforced feet

Product Details:



Supporting pole



Fabric attaching method



Connection method of power adapter

Product Details:



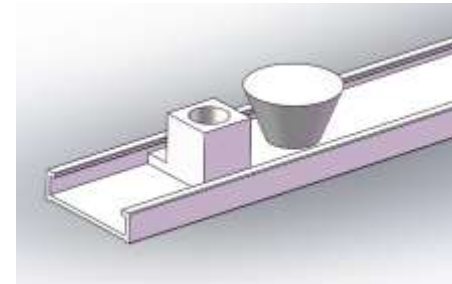
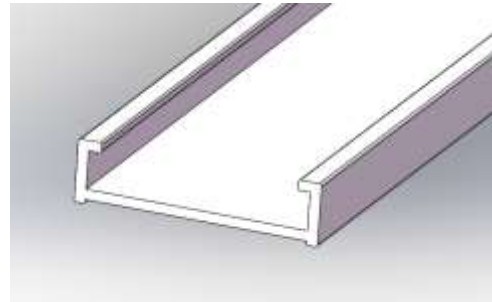
DC plug (5525) conductive wire



Light strip 24V ; 3W/LED beams
Total is 15pcs LED beams L=900 45W



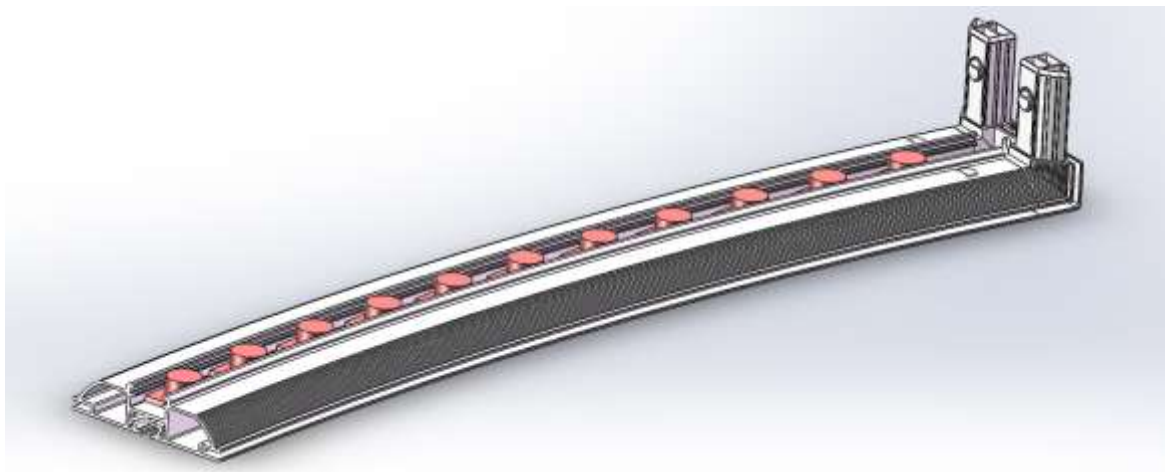
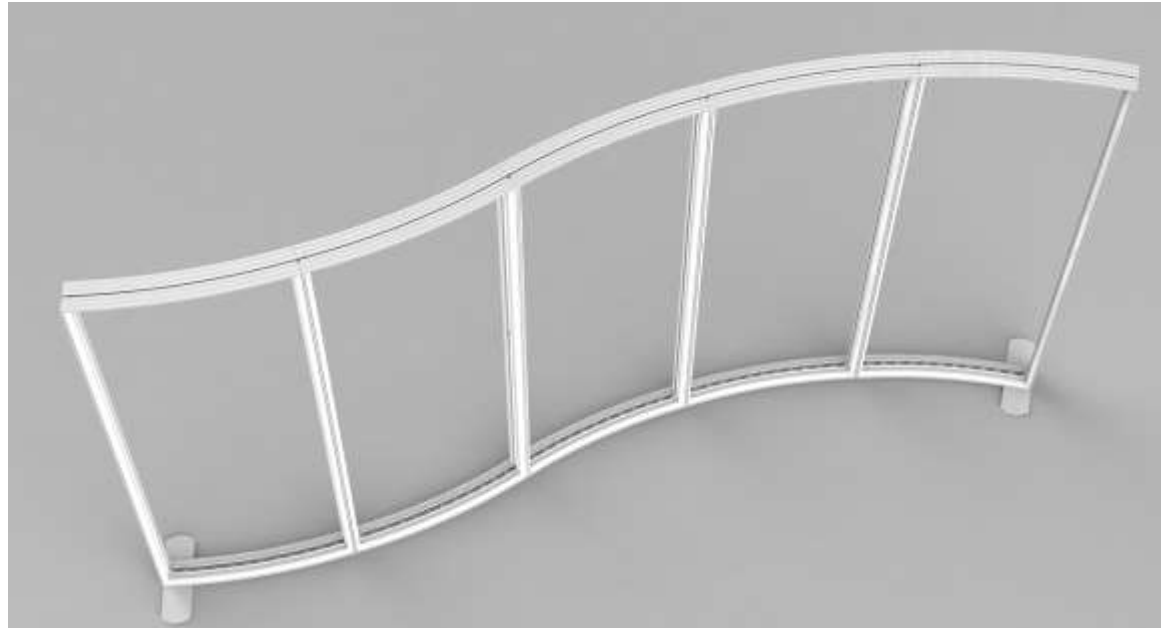
Power adapter: 144W
This adapter can drag three sets of light strip



Aluminum strip are used for heat dissipation

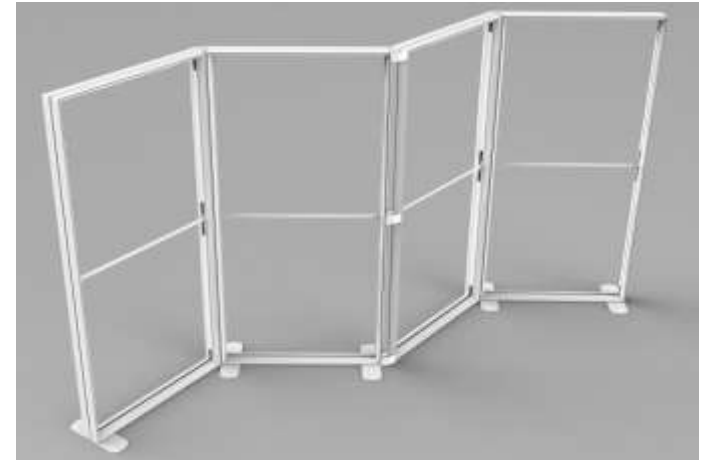
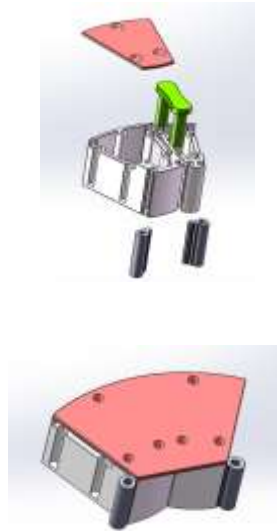
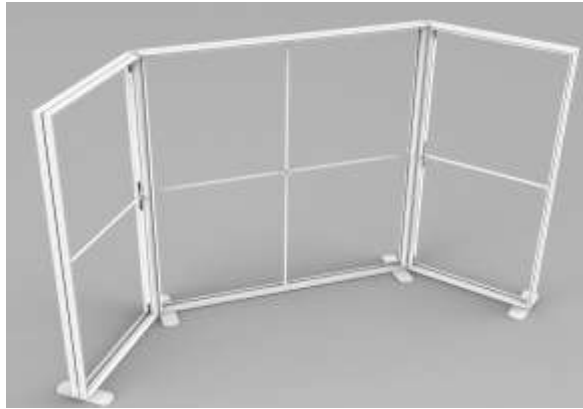
Designed by Lintel, Ours is different with Others ?

1. Curved Design



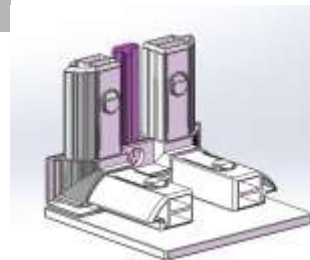
Designed by Lintel, Ours is different with Others ?

2.Angle combination



Recommended Angle: 15° / 30° / 45°
 60° / 75° / 90°

Small base



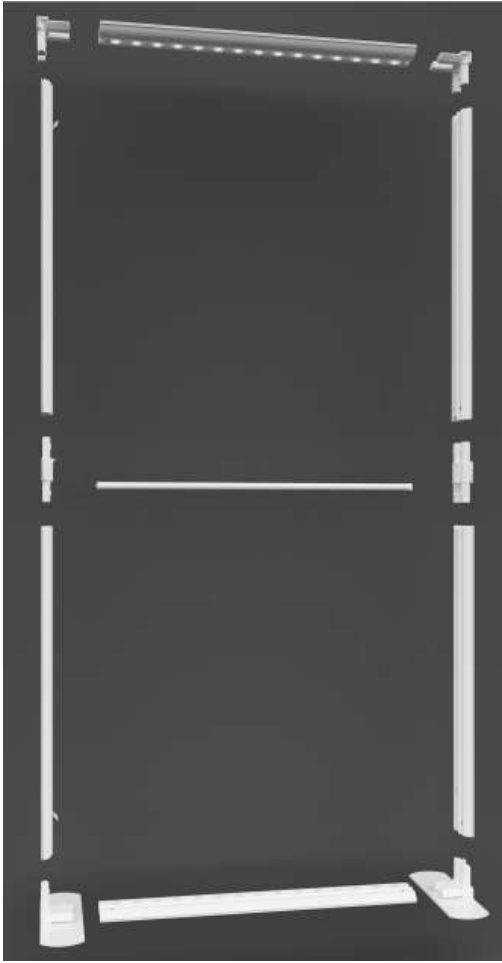
Designed by Lintel, Ours is different with Others ?

3. Extended development

- (1) Shelf, hanging rod application development
- (2) LED screen combined with the application



More photos:



Packing

◆ Trolley bag with EPP liner



◆ Trolley Hard Case

