



YORKLON

POLYETHYLENE WOVEN WALLCOVERING COLLECTION

HOSPITALITY | COMMERCIAL | HEALTH CARE | RETAIL

INTRODUCTION

Yorklon's polyethylene woven wallcovering is the solution-driven product offering beauty, functionality, and sustainability.

Made of renewable sugarcane plant, our products greatly reduce carbon footprint over fossil-fuel based products.

The products are widely used in workplace, hospitals, hotels, schools and beyond.

Apart from pasting on wall, the material offers solutions and can be also applied on multiple surfaces, such as art panels and acoustic panels, architecture doors and upholstery.





OBSSESSION ON PERFECTION

DETAILS CRAFTSMANSHIP

We are obsessed to explore new techniques and technologies. We source the latest yarn which has the potential in the design trend, we adjust our machines to adapt different production requirements.



BIODEBASED VERSION OFFERED

CRADLE TO CRADLE CERTIFIED

We have our promise to apply 100% solution-dyed polyethylene in our collections, our yarn is free of PVC, chlorine, plasticizers, heavy metals, toxic dyes and ozone-depleting chemicals.



PUSH BEYOND PRODUCTION BOUNDARIES

BEAUTIFUL & FUNCTIONAL

We have a unique design approach that combines high-performance material, technology and craftsmanship, offers an endless possibilities to designs, colors and patterns across a wide variety of end use applications.



PHYSICAL PERFORMANCE

SUPER EASY TO MAINTAIN

Designed to withstand aggressive cleaning, our polyethylene yarn is non-porous, non-fibrous, inherently stain-resistant, colourfast, non-absorbent, and keeps dirt and bacteria from getting absorbed or trapped.



白天鹅酒店管理公司
White Swan Hotel Management Co.



ESTABLISHED PROJECTS

TRUSTED GLOBAL PARTNERS

Each year we develop new collections that favor designers and clients. From where we began, we have contributed to well known projects around the globe with our delicate wallcovering materials.



**DIRECT
PASTE**



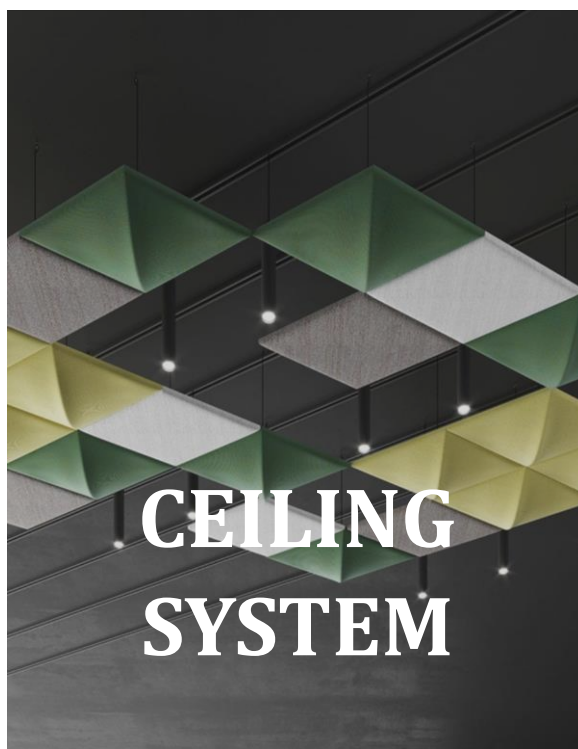
**WRAPPED
PANELS**



**ACOUSTIC
PANELS**



**UPHOLSTERY
TEXTILE**



**CEILING
SYSTEM**



**TACKABLE
PANELS**



HX 1/2/3

Composition
Woven of 100% HDPE

Width
137 cm / 54 inches

Length
50 m / 55 yards

Weight
300 gsm / 13 oz

Backing
Acrylic / Latex with mildew inhibitors

Performance
Flame retardance:
ASTM E-84 Grade A
EN 13501 B-s1, d0

Composition safety:
Cradle To Cradle Certificate ®

Physical performance:
QB/T 4034-2010 compliance

Lead Time
Sample: 1 day to send (A4 paper size free)
In-stock quantity: 2 days
Non-stock production: 15 days

Variation
There can be a variation between sample material and finished product.
Stock cuttings are available for approval.





CX 86227

Composition
Woven of 100% HDPE

Width
137 cm / 54 inches

Length
50 m / 55 yards

Weight
300 gsm / 13 oz

Backing
Acrylic / Latex with mildew inhibitors

Performance
Flame retardance:
ASTM E-84 Grade A
EN 13501 B-s1, d0

Composition safety:
Cradle To Cradle Certificate ®

Physical performance:
QB/T 4034-2010 compliance

Lead Time
Sample: 1 day to send (A4 paper size free)
In-stock quantity: 2 days
Non-stock production: 15 days

Variation
There can be a variation between sample material and finished product.
Stock cuttings are available for approval.



CX 86227-010



CX 86227-011



CX 86227-012



CX 86227-013



CX 86227-014



CX 86227-015



CX 86227-016



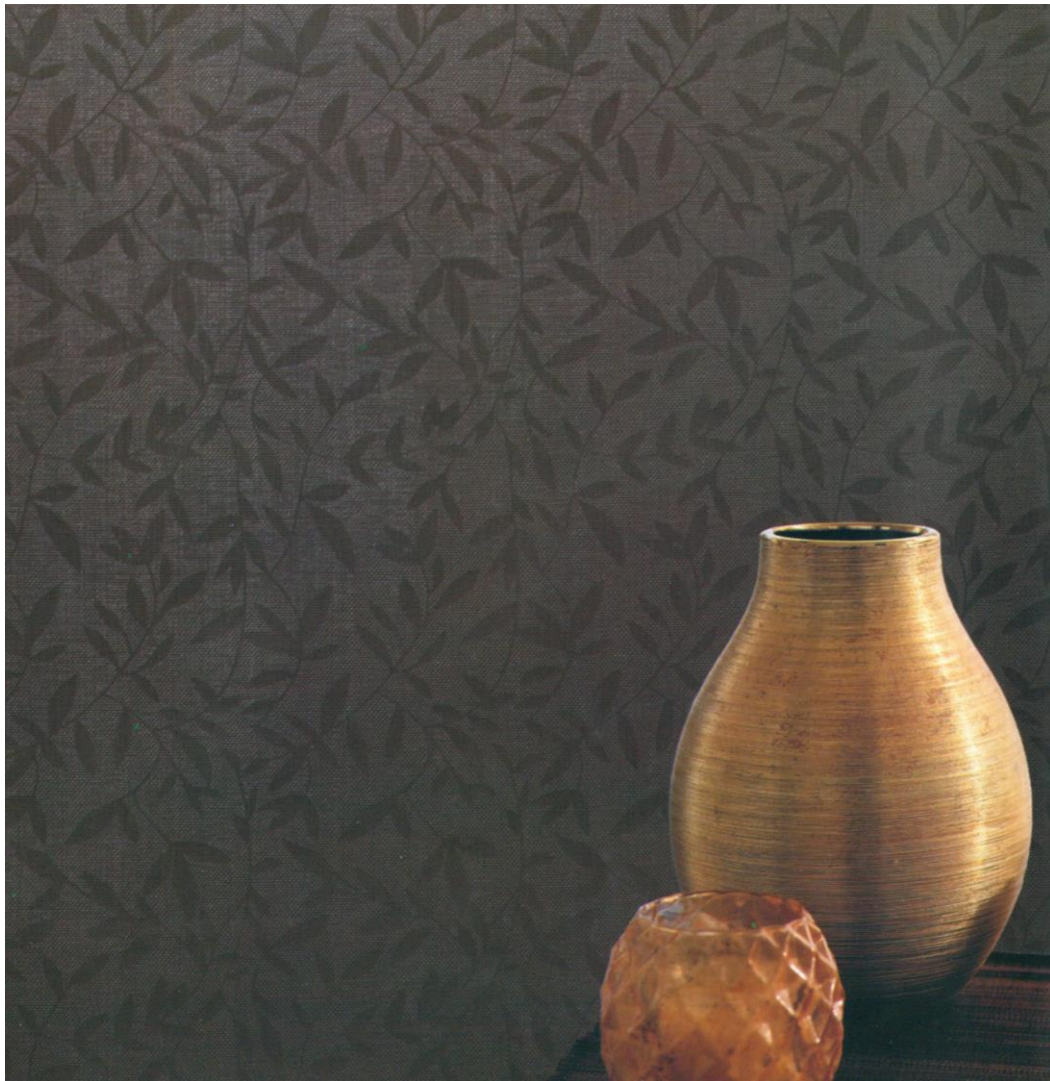
CX 86227-017



CX 86227-018



CX 86227-019



CX 6637 B

Composition
Woven of 100% HDPE

Width
137 cm / 54 inches

Length
50 m / 55 yards

Weight
300 gsm / 13 oz

Backing
Acrylic / Latex with mildew inhibitors

Performance
Flame retardance:
ASTM E-84 Grade A
EN 13501 B-s1, d0

Composition safety:
Cradle To Cradle Certificate ®

Physical performance:
QB/T 4034-2010 compliance

Lead Time
Sample: 1 day to send (A4 paper size free)
In-stock quantity: 2 days
Non-stock production: 15 days

Variation
There can be a variation between sample material and finished product.
Stock cuttings are available for approval.



CX 6637B-1100 CX 6637B-1103



CX 6637B-1106 CX 6637B-1108 CX 6637B-1109 CX 6637B-1112 CX 6637B-1120 CX 6637B-1129 CX 6637B-1138



CX 6721 B

Composition
Woven of 100% HDPE

Width
132 cm / 52 inches

Length
50 m / 55 yards

Weight
300 gsm / 13 oz

Backing
Acrylic / Latex with mildew inhibitors

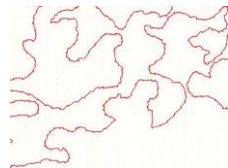
Performance
Flame retardance:
ASTM E-84 Grade A
EN 13501 B-s1, d0

Composition safety:
Cradle To Cradle Certificate ®

Physical performance:
QB/T 4034-2010 compliance

Lead Time
Sample: 1 day to send (A4 paper size free)
In-stock quantity: 2 days
Non-stock production: 15 days

Variation
There can be a variation between sample material and finished product.
Stock cuttings are available for approval.



CX 6721B-1100



CX 6721B-1102



CX 6721B-1103



CX 6721B-1106



CX 6721B-1107



CX 6721B-1126



CX 6727 B

Composition
Woven of 100% HDPE

Width
132 cm / 52 inches

Length
50 m / 55 yards

Weight
300 gsm / 13 oz

Backing
Acrylic / Latex with mildew inhibitors

Performance
Flame retardance:
ASTM E-84 Grade A
EN 13501 B-s1, d0

Composition safety:
Cradle To Cradle Certificate ®

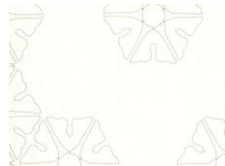
Physical performance:
QB/T 4034-2010 compliance

Lead Time
Sample: 1 day to send (A4 paper size free)
In-stock quantity: 2 days
Non-stock production: 15 days

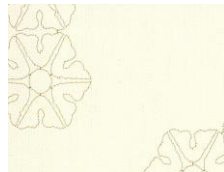
Variation
There can be a variation between sample material and finished product.
Stock cuttings are available for approval.



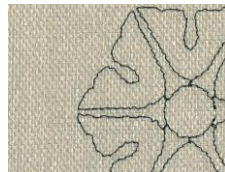
CX 6727B-0732



CX 6727B-1100



CX 6727B-1103



CX 6727B-1106



CX 6727B-1111



CX 6727B-1126



CX 6771

Composition
Woven of 100% HDPE

Width
132 cm / 52 inches

Length
50 m / 55 yards

Weight
300 gsm / 13 oz

Backing
Acrylic / Latex with mildew inhibitors

Performance
Flame retardance:
ASTM E-84 Grade A
EN 13501 B-s1, d0

Composition safety:
Cradle To Cradle Certificate ®

Physical performance:
QB/T 4034-2010 compliance

Lead Time
Sample: 1 day to send (A4 paper size free)
In-stock quantity: 2 days
Non-stock production: 15 days

Variation
There can be a variation between sample material and finished product.
Stock cuttings are available for approval.



CX 6771-1



CX 6771-2



CX 6771-3



CX 2021

Composition

Woven of 85% polyester fiber 15% Textilene

Width

142 cm / 56 inches

Length

50 m / 55 yards

Weight

300 gsm / 13 oz

Backing

Acrylic / Latex with mildew inhibitors

Performance

Flame retardance:

ASTM E-84 Grade A

EN 13501 B-s1, d0

Composition safety:

Cradle To Cradle Certificate ®

Physical performance:

QB/T 4034-2010 compliance

Lead Time

Sample: 1 day to send (A4 paper size free)

In-stock quantity: 2 days

Non-stock production: 15 days

Variation

There can be a variation between sample material and finished product.

Stock cuttings are available for approval.



CX 2021-1



CX 2021-2



CX 2021-3



CX 2021-4



CX 2021-5



CX 2021-6



CX 2021-7



CX 2021-8



CX 6237

Composition
Woven of 100% HDPE

Width
137 cm / 54 inches

Length
50 m / 55 yards

Weight
300 gsm / 13 oz

Backing
Acrylic / Latex with mildew inhibitors

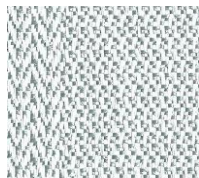
Performance
Flame retardance:
ASTM E-84 Grade A
EN 13501 B-s1, d0

Composition safety:
Cradle To Cradle Certificate ®

Physical performance:
QB/T 4034-2010 compliance

Lead Time
Sample: 1 day to send (A4 paper size free)
In-stock quantity: 2 days
Non-stock production: 15 days

Variation
There can be a variation between sample material and finished product.
Stock cuttings are available for approval.



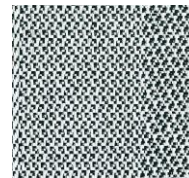
CX 6237-20



CX 6237-21



CX 6237-22



CX 6237-23



CX 6237-24



CX 6237-25



CX 6249

Composition
Woven of 100% HDPE

Width
137 cm / 54 inches

Length
50 m / 55 yards

Weight
300 gsm / 13 oz

Backing
Acrylic / Latex with mildew inhibitors

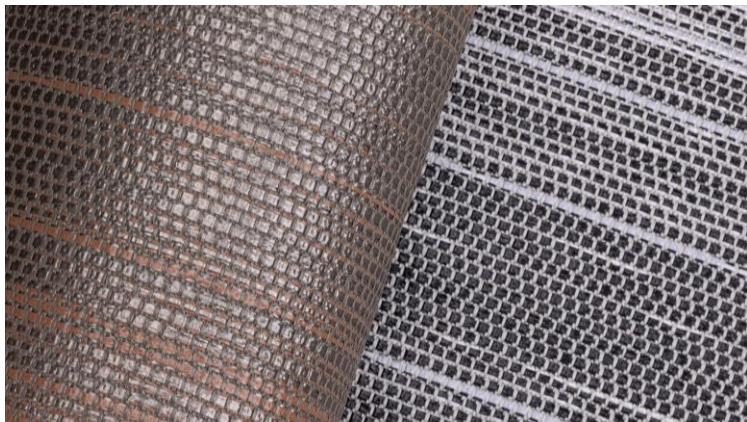
Performance
Flame retardance:
ASTM E-84 Grade A
EN 13501 B-s1, d0

Composition safety:
Cradle To Cradle Certificate ®

Physical performance:
QB/T 4034-2010 compliance

Lead Time
Sample: 1 day to send (A4 paper size free)
In-stock quantity: 2 days
Non-stock production: 15 days

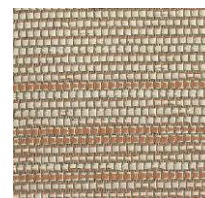
Variation
There can be a variation between sample material and finished product.
Stock cuttings are available for approval.



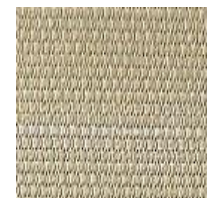
CX 6249-1



CX 6249-2



CX 6249-3



CX 6249-4



CX 6249-5



CX 6291

Composition
Woven of 100% HDPE

Width
137 cm / 54 inches

Length
50 m / 55 yards

Weight
300 gsm / 13 oz

Backing
Acrylic / Latex with mildew inhibitors

Performance
Flame retardance:
ASTM E-84 Grade A
EN 13501 B-s1, d0

Composition safety:
Cradle To Cradle Certificate ®

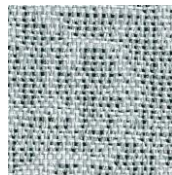
Physical performance:
QB/T 4034-2010 compliance

Lead Time
Sample: 1 day to send (A4 paper size free)
In-stock quantity: 2 days
Non-stock production: 15 days

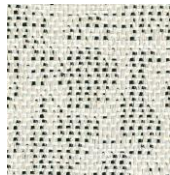
Variation
There can be a variation between sample material and finished product.
Stock cuttings are available for approval.



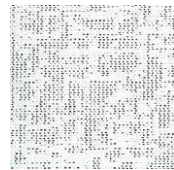
CX 6291-1



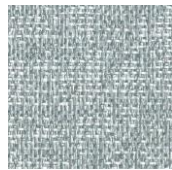
CX 6291-2



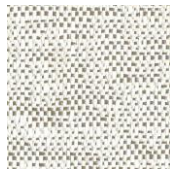
CX 6291-3



CX 6291-4



CX 6291-5



CX 6291-6



CX 6291-7



CX 6291-8



CX 6291-9



CX 6291-10



CX 539

Composition

Woven of 60% polyolefin yarn and 40% polyethylene

Width

137 cm / 54 inches

Length

50 m / 55 yards

Weight

300 gsm / 13 oz

Backing

Acrylic / Latex with mildew inhibitors

Performance

Flame retardance:

ASTM E-84 Grade A

EN 13501 B-s1, d0

Composition safety:

Cradle To Cradle Certificate ®

Physical performance:

QB/T 4034-2010 compliance

Lead Time

Sample: 1 day to send (A4 paper size free)

In-stock quantity: 2 days

Non-stock production: 15 days

Variation

There can be a variation between sample material and finished product.

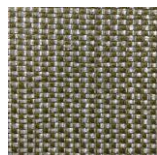
Stock cuttings are available for approval.



CX 539-1



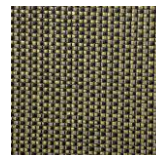
CX 539-2



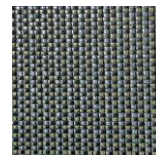
CX 539-3



CX 539-4



CX 539-5



CX 539-6



CX 1007

Composition

Woven of 60% polyolefin yarn and 40% polyethylene

Width

137 cm / 54 inches

Length

50 m / 55 yards

Weight

300 gsm / 13 oz

Backing

Acrylic / Latex with mildew inhibitors

Performance

Flame retardance:
ASTM E-84 Grade A
EN 13501 B-s1, d0

Composition safety:

Cradle To Cradle Certificate ®

Physical performance:

QB/T 4034-2010 compliance

Lead Time

Sample: 1 day to send (A4 paper size free)

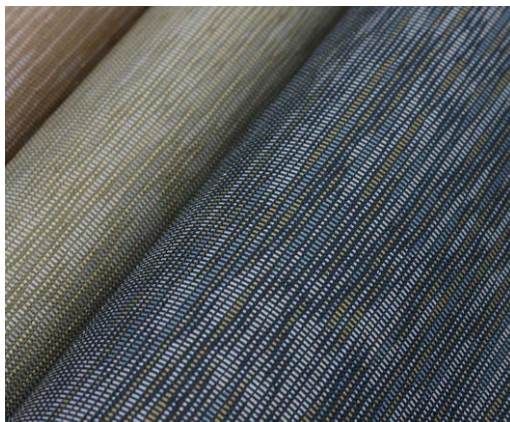
In-stock quantity: 2 days

Non-stock production: 15 days

Variation

There can be a variation between sample material and finished product.

Stock cuttings are available for approval.



CX 1007-1



CX 1007-2



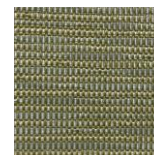
CX 1007-3



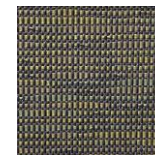
CX 1007-4



CX 1007-5



CX 1007-6



CX 1007-7



CX 1007-8



CX 539

Composition

Woven of 60% polyolefin yarn and 40% polyethylene

Width

137 cm / 54 inches

Length

50 m / 55 yards

Weight

300 gsm / 13 oz

Backing

Acrylic / Latex with mildew inhibitors

Performance

Flame retardance:

ASTM E-84 Grade A

EN 13501 B-s1, d0

Composition safety:

Cradle To Cradle Certificate ®

Physical performance:

QB/T 4034-2010 compliance

Lead Time

Sample: 1 day to send (A4 paper size free)

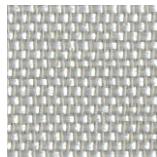
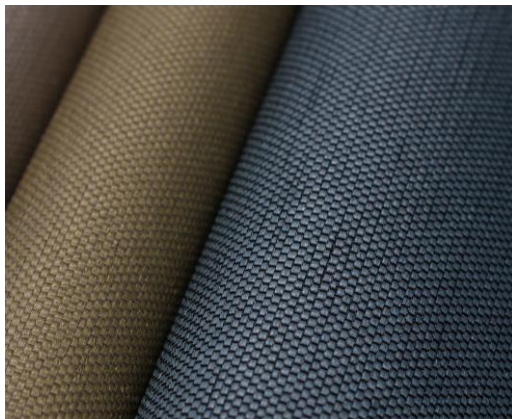
In-stock quantity: 2 days

Non-stock production: 15 days

Variation

There can be a variation between sample material and finished product.

Stock cuttings are available for approval.



CX 535-1



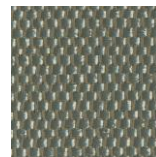
CX 535-2



CX 535-3



CX 535-4



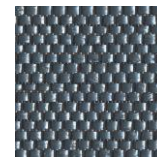
CX 535-5



CX 535-6



CX 535-7



CX 535-8



CX 1441

Composition

Woven of 60% polyolefin yarn and 40% polyethylene

Width

142 cm / 56 inches

Length

50 m / 55 yards

Weight

300 gsm / 13 oz

Backing

Acrylic / Latex with mildew inhibitors

Performance

Flame retardance:

ASTM E-84 Grade A

EN 13501 B-s1, d0

Composition safety:

Cradle To Cradle Certificate ®

Physical performance:

QB/T 4034-2010 compliance

Lead Time

Sample: 1 day to send (A4 paper size free)

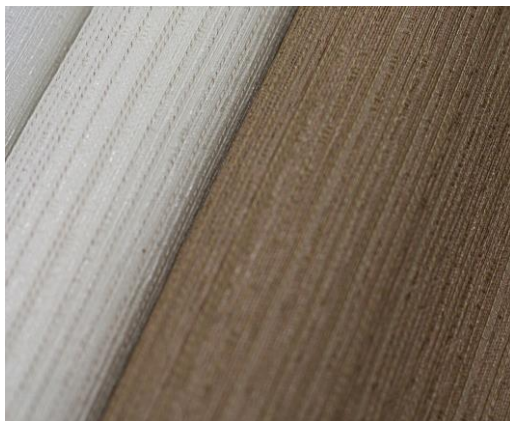
In-stock quantity: 2 days

Non-stock production: 15 days

Variation

There can be a variation between sample material and finished product.

Stock cuttings are available for approval.



CX 1441-1



CX 1441-2



CX 1441-3



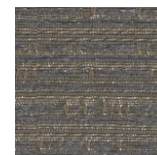
CX 1441-4



CX 1441-5



CX 1441-6



CX 1441-7



CX 1499

Composition

Woven of 60% polyolefin yarn and 40% polyethylene

Width

142 cm / 56 inches

Length

50 m / 55 yards

Weight

300 gsm / 13 oz

Backing

Acrylic / Latex with mildew inhibitors

Performance

Flame retardance:

ASTM E-84 Grade A

EN 13501 B-s1, d0

Composition safety:

Cradle To Cradle Certificate ®

Physical performance:

QB/T 4034-2010 compliance

Lead Time

Sample: 1 day to send (A4 paper size free)

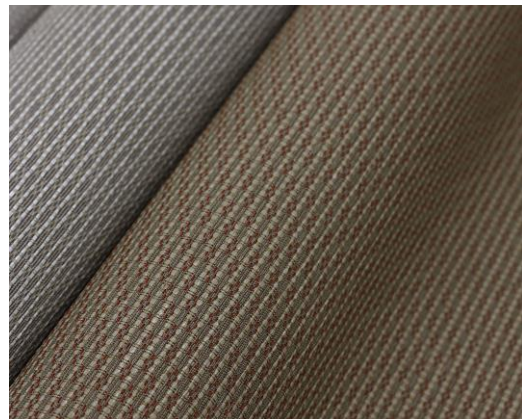
In-stock quantity: 2 days

Non-stock production: 15 days

Variation

There can be a variation between sample material and finished product.

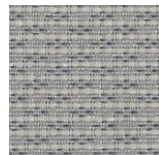
Stock cuttings are available for approval.



CX 1499-1



CX 1499-2



CX 1499-3



CX 1499-4



CX 1499-5



CX 1499-6



CX 1499-7



CX 1499-8



CX 5386

Composition

Woven of 60% polyolefin yarn and 40% polyethylene

Width

142 cm / 56 inches

Length

50 m / 55 yards

Weight

300 gsm / 13 oz

Backing

Acrylic / Latex with mildew inhibitors

Performance

Flame retardance:

ASTM E-84 Grade A

EN 13501 B-s1, d0

Composition safety:

Cradle To Cradle Certificate ®

Physical performance:

QB/T 4034-2010 compliance

Lead Time

Sample: 1 day to send (A4 paper size free)

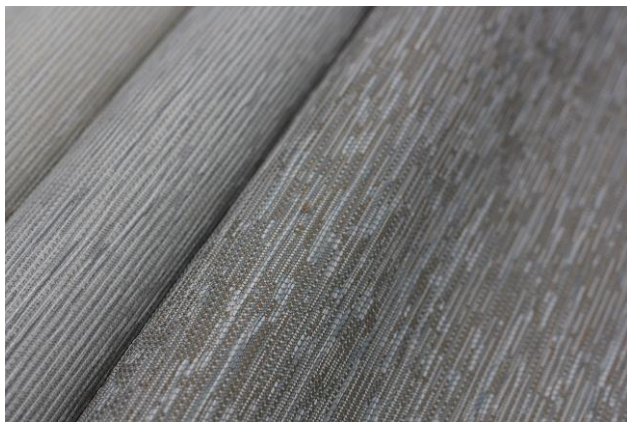
In-stock quantity: 2 days

Non-stock production: 15 days

Variation

There can be a variation between sample material and finished product.

Stock cuttings are available for approval.



CX 5386-60



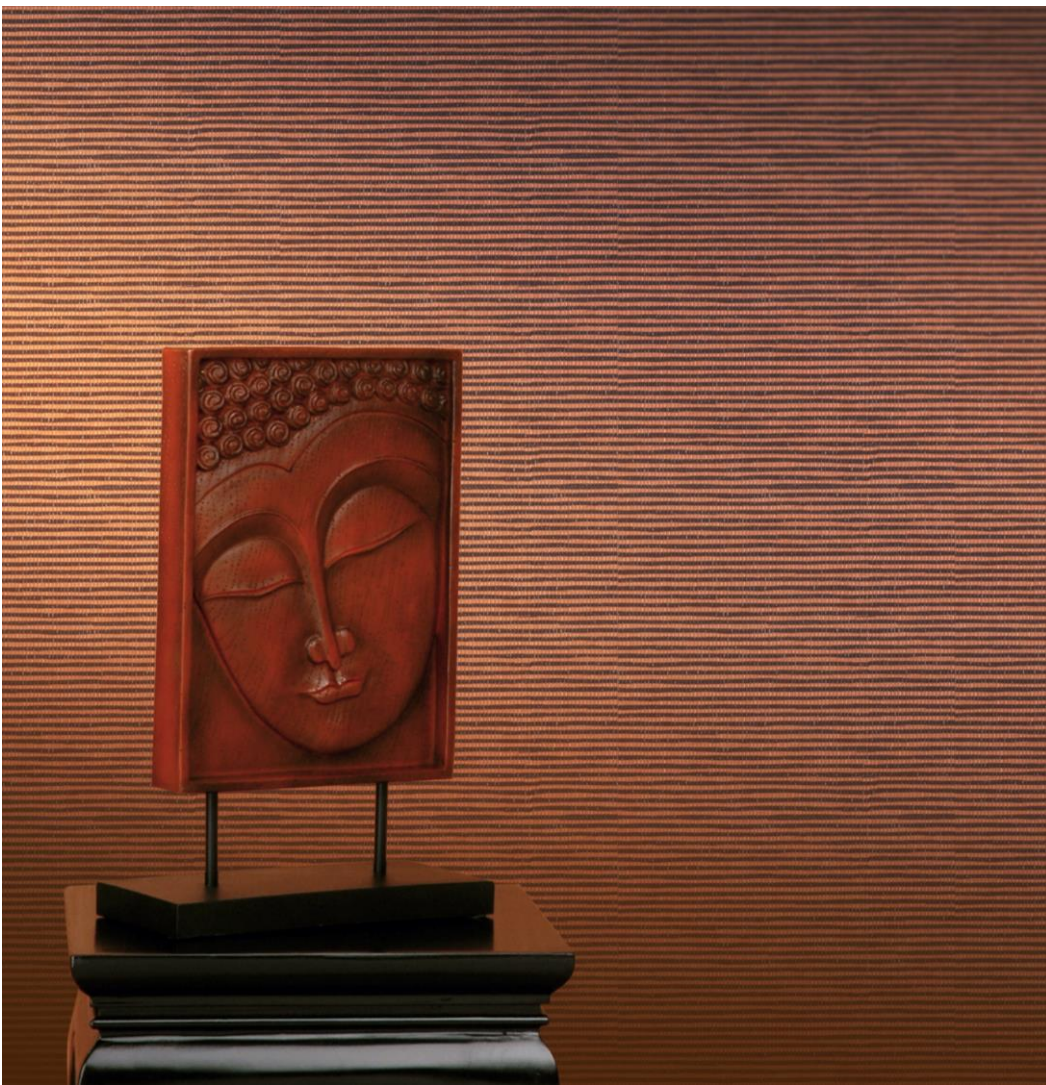
CX 5386-61



CX 5386-62



CX 5386-63



CX 2005

Composition

Woven of 60% polyolefin yarn and 40% polyethylene

Width

137 cm / 54 inches

Length

50 m / 55 yards

Weight

300 gsm / 13 oz

Backing

Acrylic / Latex with mildew inhibitors

Performance

Flame retardance:

ASTM E-84 Grade A

EN 13501 B-s1, d0

Composition safety:

Cradle To Cradle Certificate ®

Physical performance:

QB/T 4034-2010 compliance

Lead Time

Sample: 1 day to send (A4 paper size free)

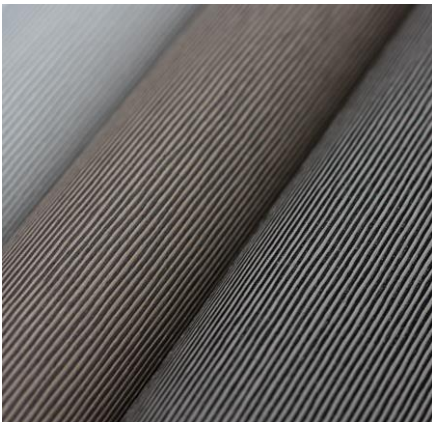
In-stock quantity: 2 days

Non-stock production: 15 days

Variation

There can be a variation between sample material and finished product.

Stock cuttings are available for approval.



CX 2005-1



CX 2005-2



CX 2005-3



CX 2005-4



CX 2005-5



CX 2005-6



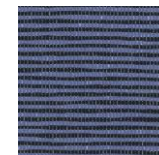
CX 2005-7



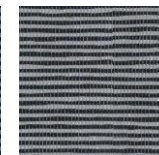
CX 2005-8



CX 2005-9



CX 2005-10



CX 2005-11



CX 2017

Composition

Woven of 60% polyolefin yarn and 40% polyethylene

Width

137 cm / 54 inches

Length

50 m / 55 yards

Weight

300 gsm / 13 oz

Backing

Acrylic / Latex with mildew inhibitors

Performance

Flame retardance:

ASTM E-84 Grade A

EN 13501 B-s1, d0

Composition safety:

Cradle To Cradle Certificate ®

Physical performance:

QB/T 4034-2010 compliance

Lead Time

Sample: 1 day to send (A4 paper size free)

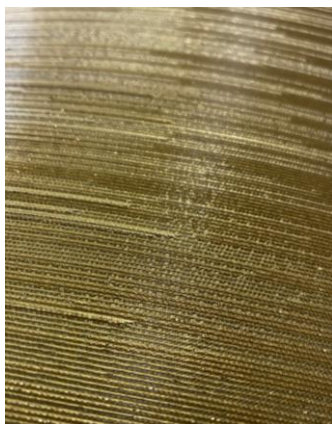
In-stock quantity: 2 days

Non-stock production: 15 days

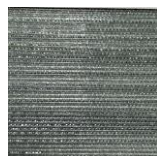
Variation

There can be a variation between sample material and finished product.

Stock cuttings are available for approval.



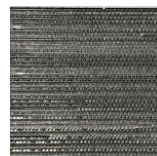
CX 2017-1



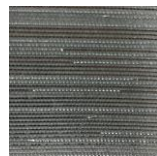
CX 2017-2



CX 2017-3



CX 2017-4



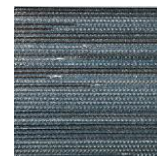
CX 2017-5



CX 2017-6



CX 2017-7



CX 2017-8



CX 2017-9



CX 2017-11



CX 2017-13



CX 2017-14



CX 2017-15



CX 2019

Composition

Woven of 60% polyolefin yarn and 40% polyethylene

Width

142 cm / 56 inches

Length

50 m / 55 yards

Weight

300 gsm / 13 oz

Backing

Acrylic / Latex with mildew inhibitors

Performance

Flame retardance:

ASTM E-84 Grade A

EN 13501 B-s1, d0

Composition safety:

Cradle To Cradle Certificate ®

Physical performance:

QB/T 4034-2010 compliance

Lead Time

Sample: 1 day to send (A4 paper size free)

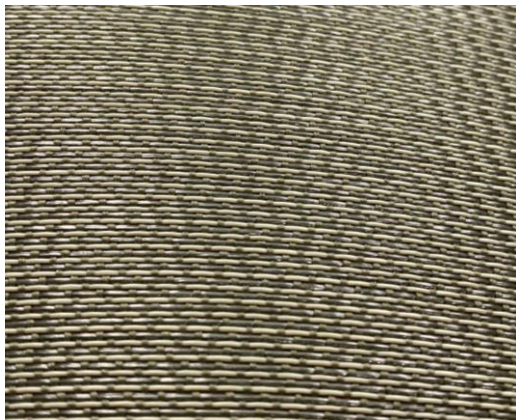
In-stock quantity: 2 days

Non-stock production: 15 days

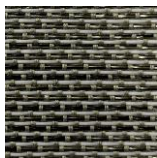
Variation

There can be a variation between sample material and finished product.

Stock cuttings are available for approval.



CX 2019-1



CX 2019-2



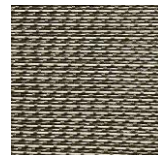
CX 2019-3



CX 2019-4



CX 2019-5



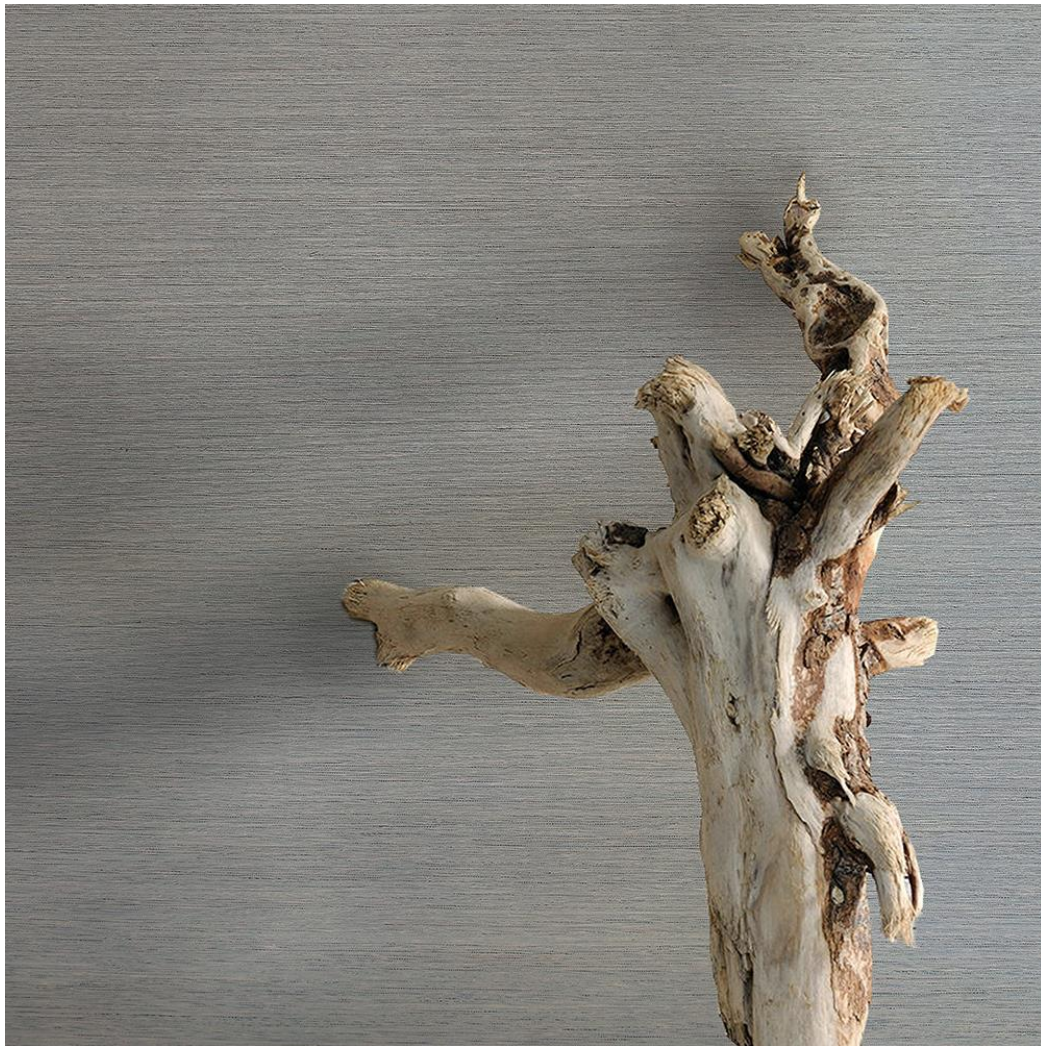
CX 2019-6



CX 2019-7



CX 2019-8



CX 2020

Composition

Woven of 50% genuine linen yarns 50% horsehair

Width

137 cm / 54 inches

Length

50 m / 55 yards

Weight

300 gsm / 13 oz

Backing

Acrylic / Latex with mildew inhibitors

Performance

Flame retardance:

ASTM E-84 Grade A

EN 13501 B-s1, d0

Composition safety:

Cradle To Cradle Certificate ®

Physical performance:

QB/T 4034-2010 compliance

Lead Time

Sample: 1 day to send (A4 paper size free)

In-stock quantity: 2 days

Non-stock production: 15 days

Variation

There can be a variation between sample material and finished product.

Stock cuttings are available for approval.



CX 2020-01



CX 2020-02



CX 2020-03



CX 2020-04



CX 2020-05



CX 2020-06



CX 2020-07



CX 2020-08



CX 2020-09



CX 7001

Composition
Woven of 100% HDPE

Width
137 cm / 54 inches

Length
50 m / 55 yards

Weight
300 gsm / 13 oz

Backing
Acrylic / Latex with mildew inhibitors

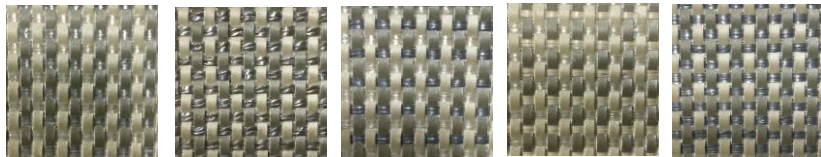
Performance
Flame retardance:
ASTM E-84 Grade A
EN 13501 B-s1, d0

Composition safety:
Cradle To Cradle Certificate ®

Physical performance:
QB/T 4034-2010 compliance

Lead Time
Sample: 1 day to send (A4 paper size free)
In-stock quantity: 2 days
Non-stock production: 15 days

Variation
There can be a variation between sample material and finished product.
Stock cuttings are available for approval.



CX 7001-801 CX 7001-802 CX 7001-803 CX 7001-804 CX 7001-805



CX 7001-806 CX 7001-807 CX 7001-808 CX 7001-809 CX 7001-810 CX 7001-811 CX 7001-812 CX 7001-813 CX 7001-814



CX 7003

Composition

Woven of 60% polyolefin yarn and 40% polyethylene

Width

142 cm / 56 inches

Length

50 m / 55 yards

Weight

300 gsm / 13 oz

Backing

Acrylic / Latex with mildew inhibitors

Performance

Flame retardance:

ASTM E-84 Grade A

EN 13501 B-s1, d0

Composition safety:

Cradle To Cradle Certificate ®

Physical performance:

QB/T 4034-2010 compliance

Lead Time

Sample: 1 day to send (A4 paper size free)

In-stock quantity: 2 days

Non-stock production: 15 days

Variation

There can be a variation between sample material and finished product.

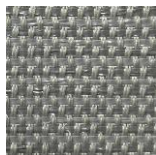
Stock cuttings are available for approval.



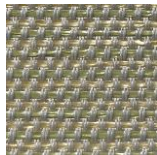
CX 7003-1



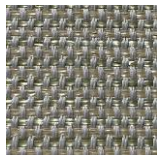
CX 7003-2



CX 7003-3



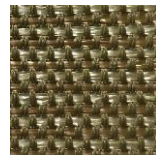
CX 7003-4



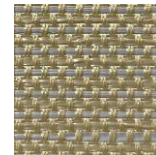
CX 7003-5



CX 7003-6



CX 7003-7



CX 7003-8



CX 7003-9



CX 7003-10



CX 7004

Composition

Woven of 50% Textilene and 30% polyester fiber

Width

142 cm / 56 inches

Length

50 m / 55 yards

Weight

300 gsm / 13 oz

Backing

Acrylic / Latex with mildew inhibitors

Performance

Flame retardance:

ASTM E-84 Grade A

EN 13501 B-s1, d0

Composition safety:

Cradle To Cradle Certificate ®

Physical performance:

QB/T 4034-2010 compliance

Lead Time

Sample: 1 day to send (A4 paper size free)

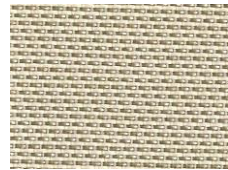
In-stock quantity: 2 days

Non-stock production: 15 days

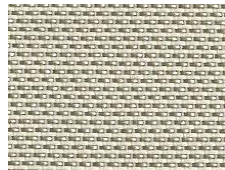
Variation

There can be a variation between sample material and finished product.

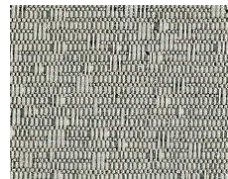
Stock cuttings are available for approval.



CX 7004-1



CX 7004-2



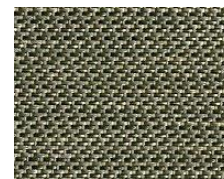
CX 7004-3



CX 7004-4



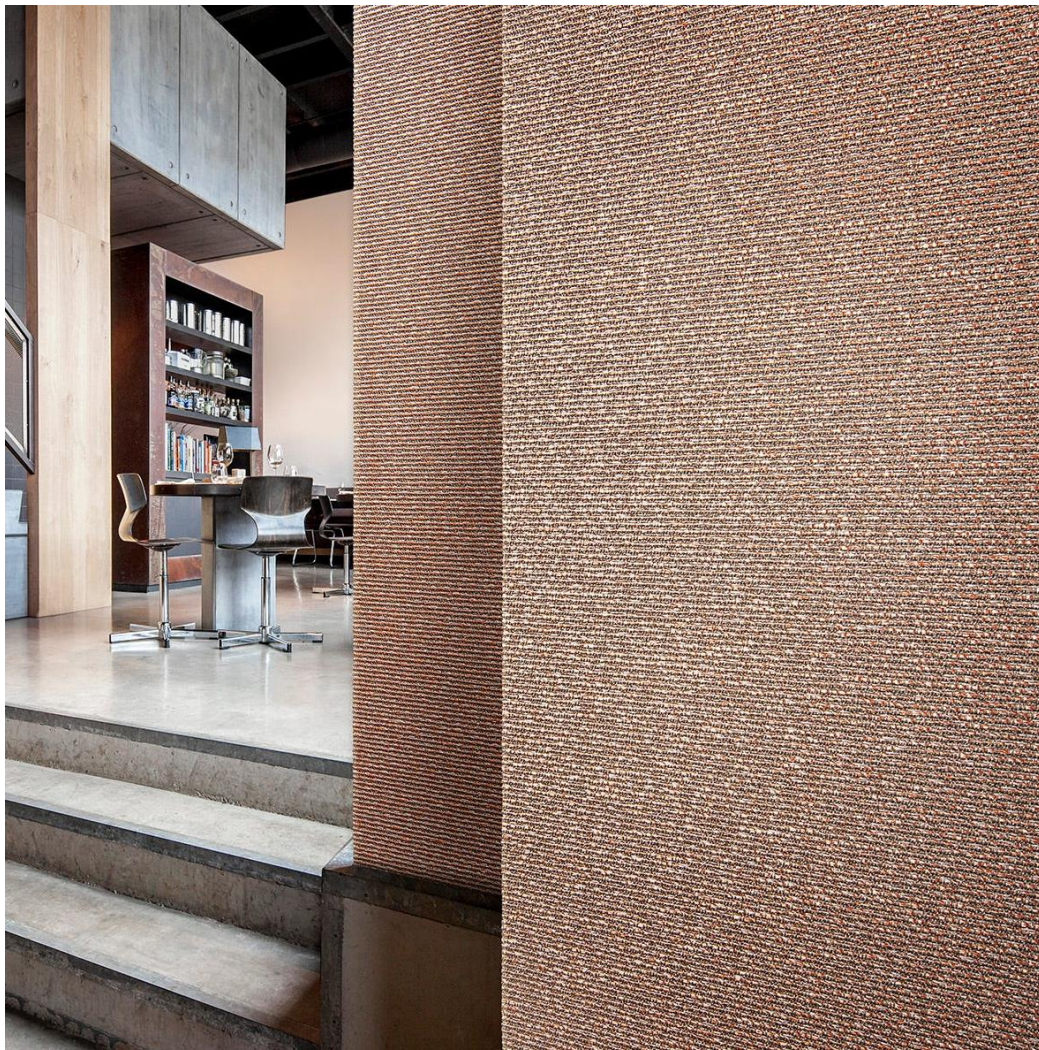
CX 7004-5



CX 7004-6



CX 7004-7



CX 86213

Composition
Woven of 100% HDPE

Width
137 cm / 54 inches

Length
50 m / 55 yards

Weight
300 gsm / 13 oz

Backing
Acrylic / Latex with mildew inhibitors

Performance
Flame retardance:
ASTM E-84 Grade A
EN 13501 B-s1, d0

Composition safety:
Cradle To Cradle Certificate ®

Physical performance:
QB/T 4034-2010 compliance

Lead Time
Sample: 1 day to send (A4 paper size free)
In-stock quantity: 2 days
Non-stock production: 15 days

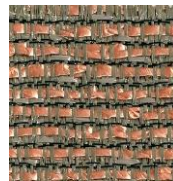
Variation
There can be a variation between sample material and finished product.
Stock cuttings are available for approval.



CX 86213-001



CX 86213-002



CX 86213-003



CX 86213-004



CX 86213-005



CX 86213-006



CX 86213-007



CX 86213-008



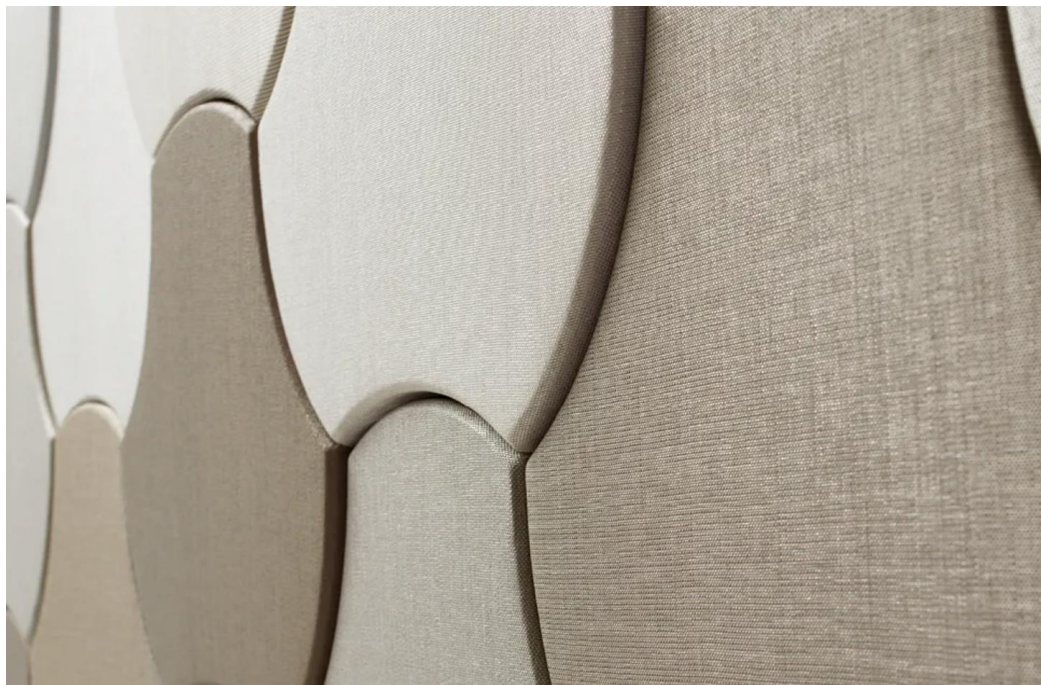
CX 86213-009



CX 86213-010



CX 86213-011



CX 86423

Composition
Woven of 100% HDPE

Width
137 cm / 54 inches

Length
50 m / 55 yards

Weight
300 gsm / 13 oz

Backing
Acrylic / Latex with mildew inhibitors

Performance
Flame retardance:
ASTM E-84 Grade A
EN 13501 B-s1, d0

Composition safety:
Cradle To Cradle Certificate ®

Physical performance:
QB/T 4034-2010 compliance

Lead Time
Sample: 1 day to send (A4 paper size free)
In-stock quantity: 2 days
Non-stock production: 15 days

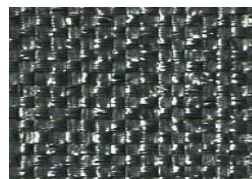
Variation
There can be a variation between sample material and finished product.
Stock cuttings are available for approval.



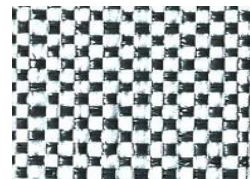
CX 86423-01



CX 86423-02



CX 86423-03



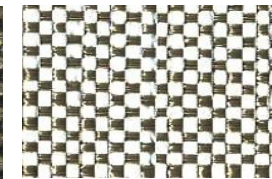
CX 86423-04



CX 86423-05



CX 86423-06



CX 86423-07



CX 6641 B

Composition
Woven of 100% HDPE

Width
137 cm / 54 inches

Length
50 m / 55 yards

Weight
300 gsm / 13 oz

Backing
Acrylic / Latex with mildew inhibitors

Performance
Flame retardance:
ASTM E-84 Grade A
EN 13501 B-s1, d0

Composition safety:
Cradle To Cradle Certificate ®

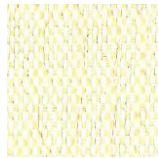
Physical performance:
QB/T 4034-2010 compliance

Lead Time
Sample: 1 day to send (A4 paper size free)
In-stock quantity: 2 days
Non-stock production: 15 days

Variation
There can be a variation between sample material and finished product.
Stock cuttings are available for approval.



CX 6641 B-1100



CX 6641B-1103



CX 6641B-1114



CX 6641B-1127



CX 6641B-1129



CX 6641B-1133



CX 6641B-1134



CX 6641B-1135



CX 6641B-1234



CX 2000

Composition

Woven of 60% polyolefin yarn and 40% polyethylene

Width

142 cm / 56 inches

Length

50 m / 55 yards

Weight

300 gsm / 13 oz

Backing

Acrylic / Latex with mildew inhibitors

Performance

Flame retardance:

ASTM E-84 Grade A

EN 13501 B-s1, d0

Composition safety:

Cradle To Cradle Certificate ®

Physical performance:

QB/T 4034-2010 compliance

Lead Time

Sample: 1 day to send (A4 paper size free)

In-stock quantity: 2 days

Non-stock production: 15 days

Variation

There can be a variation between sample material and finished product.

Stock cuttings are available for approval.



CX 2001



CX 2002



CX 2003



CX 2004



CX 2005



CX 2006



CX 2007



CX 2008



CX 2009



CX 2010



CX 66

Composition

Woven of 60% polyolefin yarn and 40% polyethylene

Width

142 cm / 56 inches

Length

50 m / 55 yards

Weight

300 gsm / 13 oz

Backing

Acrylic / Latex with mildew inhibitors

Performance

Flame retardance:

ASTM E-84 Grade A

EN 13501 B-s1, d0

Composition safety:

Cradle To Cradle Certificate ®

Physical performance:

QB/T 4034-2010 compliance

Lead Time

Sample: 1 day to send (A4 paper size free)

In-stock quantity: 2 days

Non-stock production: 15 days

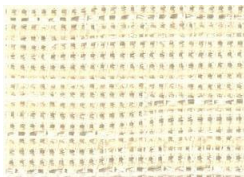
Variation

There can be a variation between sample material and finished product.

Stock cuttings are available for approval.



CX 66-1461



CX 66-1462



CX 66-1463



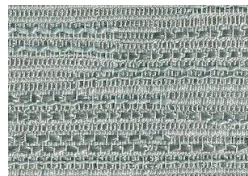
CX 66-1464



CX 66-1465



CX 66-1466



CX 66-1467



CX 66-1468



CX 66-1469



CX 300

Composition

Woven of 60% polyolefin yarn and 40% polyethylene

Width

142 cm / 56 inches

Length

50 m / 55 yards

Weight

300 gsm / 13 oz

Backing

Acrylic / Latex with mildew inhibitors

Performance

Flame retardance:

ASTM E-84 Grade A

EN 13501 B-s1, d0

Composition safety:

Cradle To Cradle Certificate ®

Physical performance:

QB/T 4034-2010 compliance

Lead Time

Sample: 1 day to send (A4 paper size free)

In-stock quantity: 2 days

Non-stock production: 15 days

Variation

There can be a variation between sample material and finished product.

Stock cuttings are available for approval.



CX 300-001



CX 300-002



CX 300-003



CX 300-004



CX 300-005



CX 300-006



CX 400

Composition

Woven of 60% polyolefin yarn and 40% polyethylene

Width

142 cm / 56 inches

Length

50 m / 55 yards

Weight

300 gsm / 13 oz

Backing

Acrylic / Latex with mildew inhibitors

Performance

Flame retardance:

ASTM E-84 Grade A

EN 13501 B-s1, d0

Composition safety:

Cradle To Cradle Certificate ®

Physical performance:

QB/T 4034-2010 compliance

Lead Time

Sample: 1 day to send (A4 paper size free)

In-stock quantity: 2 days

Non-stock production: 15 days

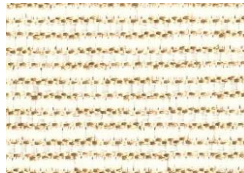
Variation

There can be a variation between sample material and finished product.

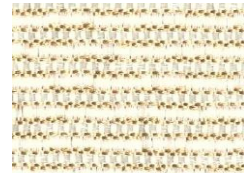
Stock cuttings are available for approval.



CX 400-001



CX 400-002



CX 400-003



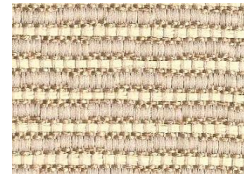
CX 400-004



CX 400-005



CX 400-006



CX 400-007



CX 400-008



CX 900

Composition

Woven of 60% polyolefin yarn and 40% polyethylene

Width

142 cm / 56 inches

Length

50 m / 55 yards

Weight

300 gsm / 13 oz

Backing

Acrylic / Latex with mildew inhibitors

Performance

Flame retardance:

ASTM E-84 Grade A

EN 13501 B-s1, d0

Composition safety:

Cradle To Cradle Certificate ®

Physical performance:

QB/T 4034-2010 compliance

Lead Time

Sample: 1 day to send (A4 paper size free)

In-stock quantity: 2 days

Non-stock production: 15 days

Variation

There can be a variation between sample material and finished product.

Stock cuttings are available for approval.



CX 900-001



CX 900-002



CX 900-003



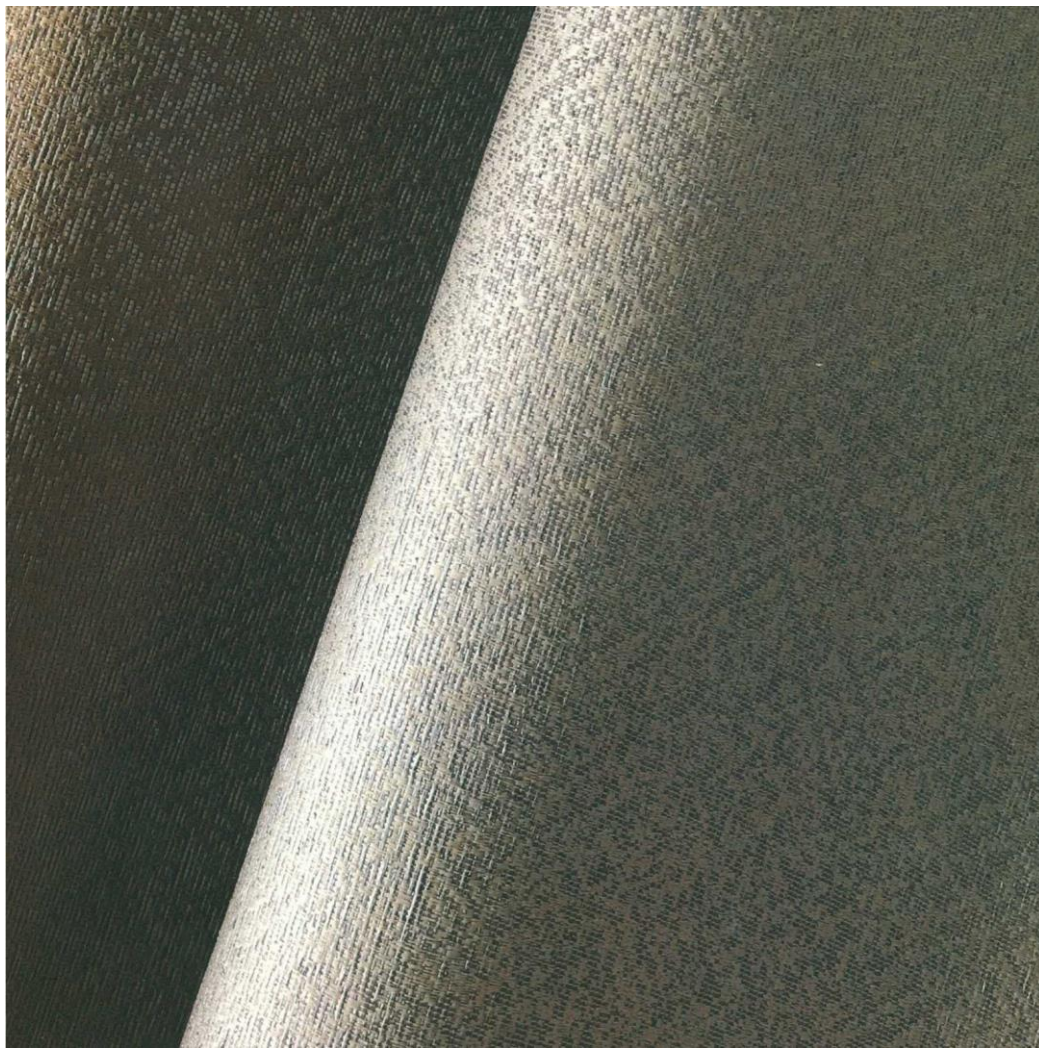
CX 900-004



CX 900-005



CX 900-006



CX 1000

Composition

Woven of 60% polyolefin yarn and 40% polyethylene

Width

142 cm / 56 inches

Length

50 m / 55 yards

Weight

300 gsm / 13 oz

Backing

Acrylic / Latex with mildew inhibitors

Performance

Flame retardance:

ASTM E-84 Grade A

EN 13501 B-s1, d0

Composition safety:

Cradle To Cradle Certificate ®

Physical performance:

QB/T 4034-2010 compliance

Lead Time

Sample: 1 day to send (A4 paper size free)

In-stock quantity: 2 days

Non-stock production: 15 days

Variation

There can be a variation between sample material and finished product.

Stock cuttings are available for approval.



CX 1001



CX 1002



CX 1003



CX 1004



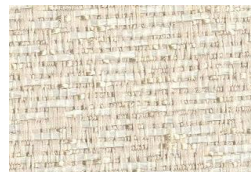
CX 1005



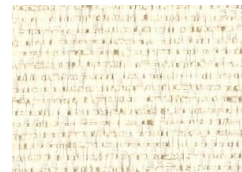
CX 1006



CX 1007



CX 1008



CX 1009



CX 2018

Composition

Woven of 100% genuine linen yarns

Width

137 cm / 54 inches

Length

50 m / 55 yards

Weight

300 gsm / 13 oz

Backing

Acrylic / Latex with mildew inhibitors

Performance

Flame retardance:

ASTM E-84 Grade A

EN 13501 B-s1, d0

Composition safety:

Cradle To Cradle Certificate ®

Physical performance:

QB/T 4034-2010 compliance

Lead Time

Sample: 1 day to send (A4 paper size free)

In-stock quantity: 2 days

Non-stock production: 15 days

Variation

There can be a variation between sample material and finished product.

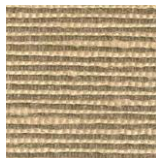
Stock cuttings are available for approval.



CX 2018-1



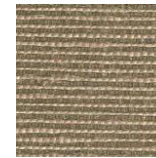
CX 2018-2



CX 2018-3



CX 2018-4



CX 2018-5



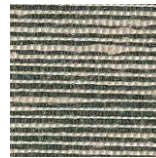
CX 2018-6



CX 2018-7



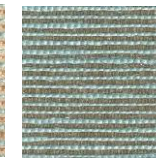
CX 2018-8



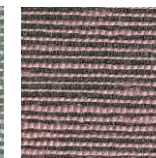
CX 2018-9



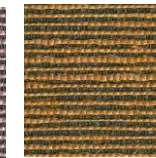
CX 2018-10



CX 2018-11



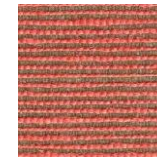
CX 2018-12



CX 2018-13



CX 2018-14



CX 2018-15



CX 2178

Composition

Woven of 100% HDPE

Width

137 cm / 54 inches

Length

50 m / 55 yards

Weight

300 gsm / 13 oz

Backing

Acrylic / Latex with mildew inhibitors

Performance

Flame retardance:

ASTM E-84 Grade A

EN 13501 B-s1, d0

Composition safety:

Cradle To Cradle Certificate ®

Physical performance:

QB/T 4034-2010 compliance

Lead Time

Sample: 1 day to send (A4 paper size free)

In-stock quantity: 2 days

Non-stock production: 15 days

Variation

There can be a variation between sample material and finished product.

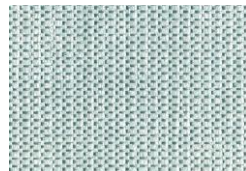
Stock cuttings are available for approval.



CX 2178-1



CX 2178-2



CX 2178-3



CX 2178-4



CX 2178-5



CX 2178-6



CX 2178-7



CX 3000

Composition

Woven of 60% polyolefin yarn 40% polyethylene

Width

142 cm / 56 inches

Length

50 m / 55 yards

Weight

300 gsm / 13 oz

Backing

Acrylic / Latex with mildew inhibitors

Performance

Flame retardance:

ASTM E-84 Grade A

EN 13501 B-s1, d0

Composition safety:

Cradle To Cradle Certificate ®

Physical performance:

QB/T 4034-2010 compliance

Lead Time

Sample: 1 day to send (A4 paper size free)

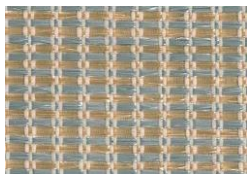
In-stock quantity: 2 days

Non-stock production: 15 days

Variation

There can be a variation between sample material and finished product.

Stock cuttings are available for approval.



CX 3001



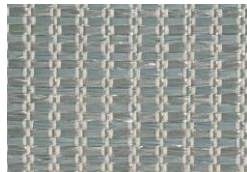
CX 3002



CX 3003



CX 3004



CX 3005



CX 3006



CX 3007



CX 3008



CX 4000

Composition

Woven of 60% polyolefin yarn 40% polyethylene

Width

142 cm / 56 inches

Length

50 m / 55 yards

Weight

300 gsm / 13 oz

Backing

Acrylic / Latex with mildew inhibitors

Performance

Flame retardance:

ASTM E-84 Grade A

EN 13501 B-s1, d0

Composition safety:

Cradle To Cradle Certificate ®

Physical performance:

QB/T 4034-2010 compliance

Lead Time

Sample: 1 day to send (A4 paper size free)

In-stock quantity: 2 days

Non-stock production: 15 days

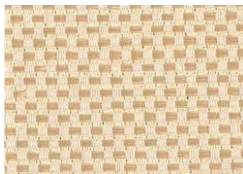
Variation

There can be a variation between sample material and finished product.

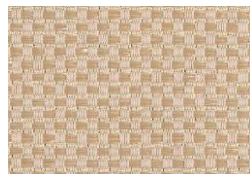
Stock cuttings are available for approval.



CX 4001



CX 4002



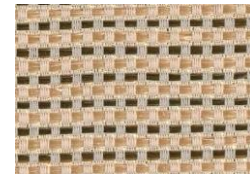
CX 4003



CX 4004



CX 4005



CX 4006



CX 4007



CX 4008



CX 4008



CX 6000

Composition

Woven of 60% polyolefin yarn 40% polyethylene

Width

142 cm / 56 inches

Length

50 m / 55 yards

Weight

300 gsm / 13 oz

Backing

Acrylic / Latex with mildew inhibitors

Performance

Flame retardance:

ASTM E-84 Grade A

EN 13501 B-s1, d0

Composition safety:

Cradle To Cradle Certificate ®

Physical performance:

QB/T 4034-2010 compliance

Lead Time

Sample: 1 day to send (A4 paper size free)

In-stock quantity: 2 days

Non-stock production: 15 days

Variation

There can be a variation between sample material and finished product.

Stock cuttings are available for approval.



CX 6001



CX 6002



CX 6003



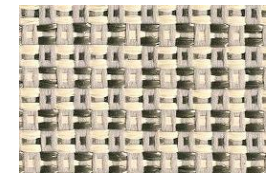
CX 6004



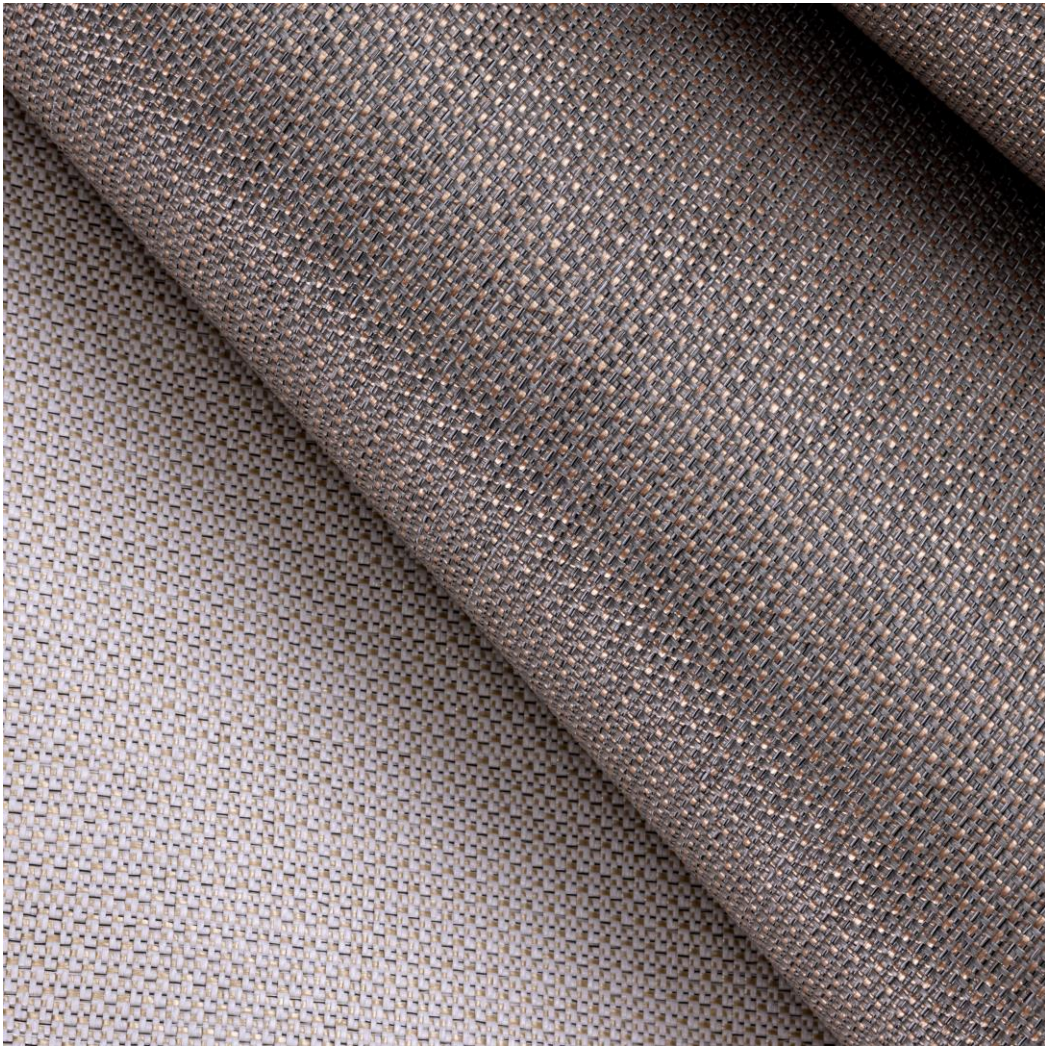
CX 6005



CX 6006



CX 6007



CX 6269

Composition
Woven of 100% HDPE

Width
137 cm / 54 inches

Length
50 m / 55 yards

Weight
300 gsm / 13 oz

Backing
Acrylic / Latex with mildew inhibitors

Performance
Flame retardance:
ASTM E-84 Grade A
EN 13501 B-s1, d0

Composition safety:
Cradle To Cradle Certificate ®

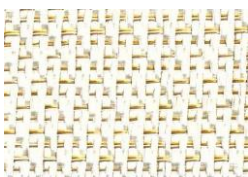
Physical performance:
QB/T 4034-2010 compliance

Lead Time
Sample: 1 day to send (A4 paper size free)
In-stock quantity: 2 days
Non-stock production: 15 days

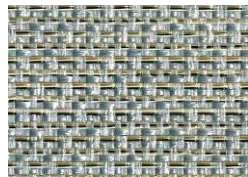
Variation
There can be a variation between sample material and finished product.
Stock cuttings are available for approval.



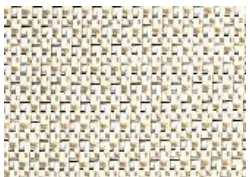
CX 6269-10



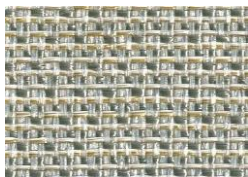
CX 6269-11



CX 6269-12



CX 6269-13



CX 6269-14



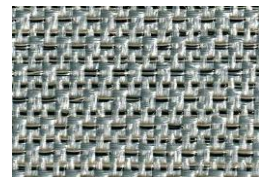
CX 6269-15



CX 6269-16



CX 6269-17



CX 6269-18



CX 6547

Composition
Woven of 100% HDPE

Width
137 cm / 54 inches

Length
50 m / 55 yards

Weight
300 gsm / 13 oz

Backing
Acrylic / Latex with mildew inhibitors

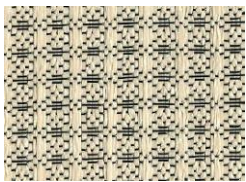
Performance
Flame retardance:
ASTM E-84 Grade A
EN 13501 B-s1, d0

Composition safety:
Cradle To Cradle Certificate ®

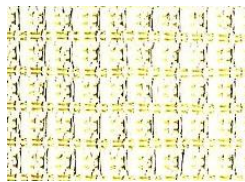
Physical performance:
QB/T 4034-2010 compliance

Lead Time
Sample: 1 day to send (A4 paper size free)
In-stock quantity: 2 days
Non-stock production: 15 days

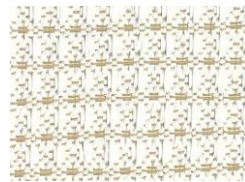
Variation
There can be a variation between sample material and finished product.
Stock cuttings are available for approval.



CX 6547-02



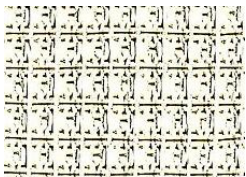
CX 6547-03



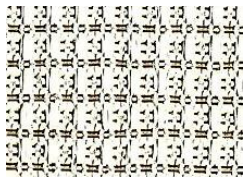
CX 6547-04



CX 6547-07



CX 6547-12



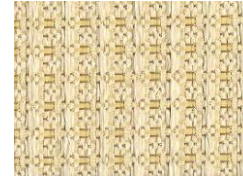
CX 6547-13



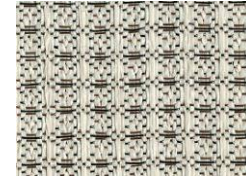
CX 6547-14



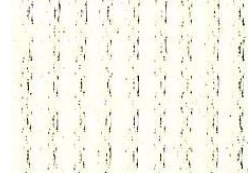
CX 6547-15



CX 6547-16



CX 6547-17



CX 6547-18



CX 6617

Composition
Woven of 100% HDPE

Width
137 cm / 54 inches

Length
50 m / 55 yards

Weight
300 gsm / 13 oz

Backing
Acrylic / Latex with mildew inhibitors

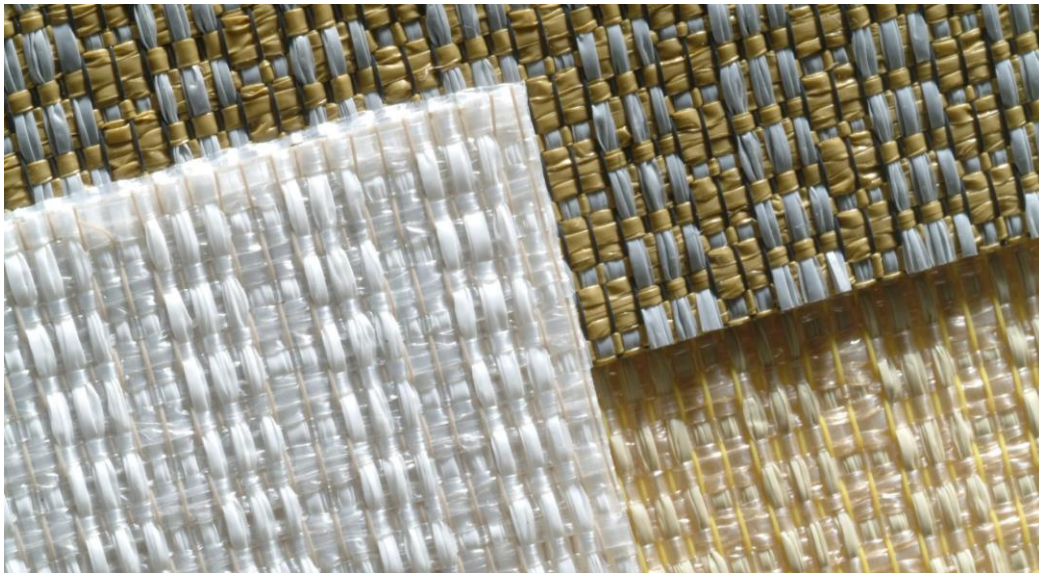
Performance
Flame retardance:
ASTM E-84 Grade A
EN 13501 B-s1, d0

Composition safety:
Cradle To Cradle Certificate ®

Physical performance:
QB/T 4034-2010 compliance

Lead Time
Sample: 1 day to send (A4 paper size free)
In-stock quantity: 2 days
Non-stock production: 15 days

Variation
There can be a variation between sample material and finished product.
Stock cuttings are available for approval.



CX 6617-01



CX 6617-02



CX 6617-03



CX 6617-04



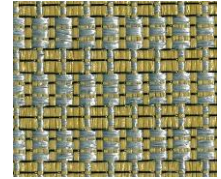
CX 6617-05



CX 6617-06



CX 6617-07



CX 6617-08



CX 6619

Composition
Woven of 100% HDPE

Width
137 cm / 54 inches

Length
50 m / 55 yards

Weight
300 gsm / 13 oz

Backing
Acrylic / Latex with mildew inhibitors

Performance
Flame retardance:
ASTM E-84 Grade A
EN 13501 B-s1, d0

Composition safety:
Cradle To Cradle Certificate ®

Physical performance:
QB/T 4034-2010 compliance

Lead Time
Sample: 1 day to send (A4 paper size free)
In-stock quantity: 2 days
Non-stock production: 15 days

Variation
There can be a variation between sample material and finished product.
Stock cuttings are available for approval.



CX 6619-090 CX 6619-091 CX 6619-092 CX 6619-093 CX 6619-094



CX 6619-095 CX 6619-096 CX 6619-097 CX 6619-098 CX 6619-099 CX 6619-100 CX 6619-101 CX 6619-111 CX 6619-112 CX 6619-113



CX 6623

Composition
Woven of 100% HDPE

Width
137 cm / 54 inches

Length
50 m / 55 yards

Weight
300 gsm / 13 oz

Backing
Acrylic / Latex with mildew inhibitors

Performance
Flame retardance:
ASTM E-84 Grade A
EN 13501 B-s1, d0

Composition safety:
Cradle To Cradle Certificate ®

Physical performance:
QB/T 4034-2010 compliance

Lead Time
Sample: 1 day to send (A4 paper size free)
In-stock quantity: 2 days
Non-stock production: 15 days

Variation
There can be a variation between sample material and finished product.
Stock cuttings are available for approval.



CX 6623-0150



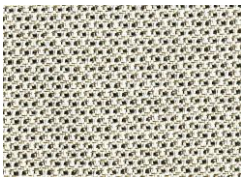
CX 6623-0151



CX 6623-0152



CX 6623-0153



CX 6623-0154



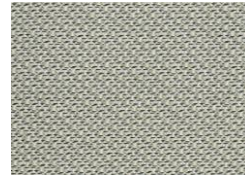
CX 6623-0155



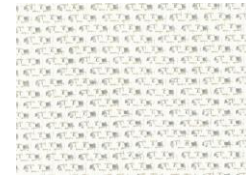
CX 6623-0156



CX 6623-0157



CX 6623-0158



CX 6623-0159



CX 6625

Composition
Woven of 100% HDPE

Width
137 cm / 54 inches

Length
50 m / 55 yards

Weight
300 gsm / 13 oz

Backing
Acrylic / Latex with mildew inhibitors

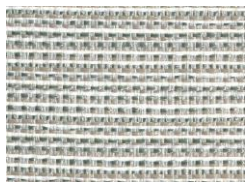
Performance
Flame retardance:
ASTM E-84 Grade A
EN 13501 B-s1, d0

Composition safety:
Cradle To Cradle Certificate ®

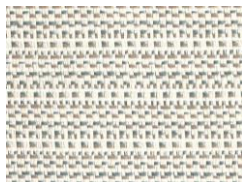
Physical performance:
QB/T 4034-2010 compliance

Lead Time
Sample: 1 day to send (A4 paper size free)
In-stock quantity: 2 days
Non-stock production: 15 days

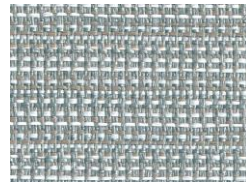
Variation
There can be a variation between sample material and finished product.
Stock cuttings are available for approval.



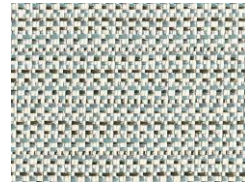
CX 6625-040



CX 6625-041



CX 6625-042



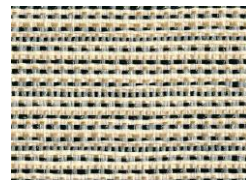
CX 6625-043



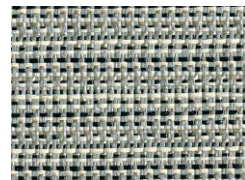
CX 6625-044



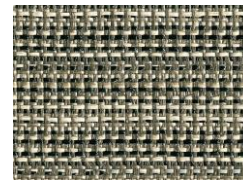
CX 6625-045



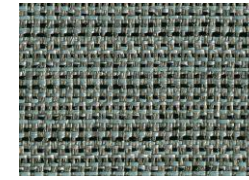
CX 6625-046



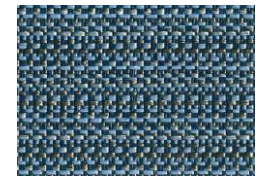
CX 6625-047



CX 6625-048



CX 6625-049



CX 6625-050



CX 6629

Composition
Woven of 100% HDPE

Width
137 cm / 54 inches

Length
50 m / 55 yards

Weight
300 gsm / 13 oz

Backing
Acrylic / Latex with mildew inhibitors

Performance
Flame retardance:
ASTM E-84 Grade A
EN 13501 B-s1, d0

Composition safety:
Cradle To Cradle Certificate ®

Physical performance:
QB/T 4034-2010 compliance

Lead Time
Sample: 1 day to send (A4 paper size free)
In-stock quantity: 2 days
Non-stock production: 15 days

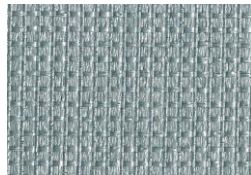
Variation
There can be a variation between sample material and finished product.
Stock cuttings are available for approval.



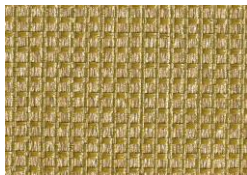
CX 6629-060



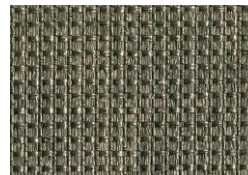
CX 6629-061



CX 6629-062



CX 6629-063



CX 6629-064



CX 6629-065



CX 6629-066



CX 7000

Composition

Woven of 60% polyolefin yarn 40% polyethylene

Width

142 cm / 56 inches

Length

50 m / 55 yards

Weight

300 gsm / 13 oz

Backing

Acrylic / Latex with mildew inhibitors

Performance

Flame retardance:

ASTM E-84 Grade A

EN 13501 B-s1, d0

Composition safety:

Cradle To Cradle Certificate ®

Physical performance:

QB/T 4034-2010 compliance

Lead Time

Sample: 1 day to send (A4 paper size free)

In-stock quantity: 2 days

Non-stock production: 15 days

Variation

There can be a variation between sample material and finished product.

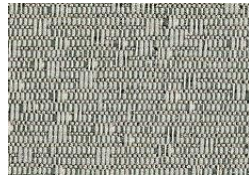
Stock cuttings are available for approval.



CX 7001



CX 7002



CX 7003



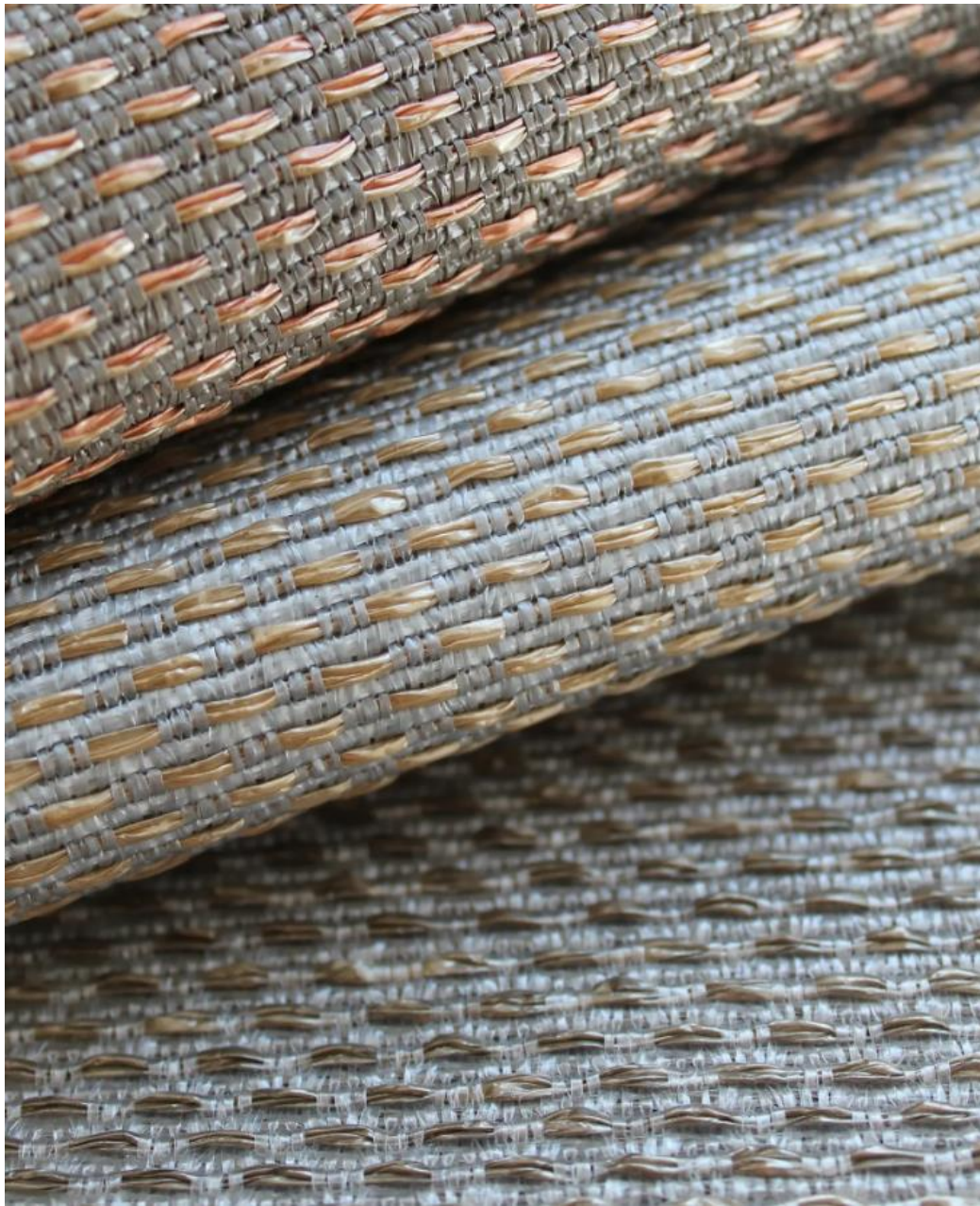
CX 7004



CX 7005



CX 7006



CX 86211

Composition
Woven of 100% HDPE

Width
137cm / 54 inches

Length
50 m / 55 yards

Weight
300 gsm / 13 oz

Backing
Acrylic / Latex with mildew inhibitors

Performance
Flame retardance:
ASTM E-84 Grade A
EN 13501 B-s1, d0

Composition safety:
Cradle To Cradle Certificate ®

Physical performance:
QB/T 4034-2010 compliance

Lead Time
Sample: 1 day to send (A4 paper size free)
In-stock quantity: 2 days
Non-stock production: 15 days

Variation
There can be a variation between sample material and finished product.
Stock cuttings are available for approval.



CX 86211-020



CX 86211-021



CX 86211-022



CX 86211-023



CX 86211-024



CX 86211-025



CX 86211-026



CX 86215

Composition
Woven of 100% HDPE

Width
137cm / 54 inches

Length
50 m / 55 yards

Weight
300 gsm / 13 oz

Backing
Acrylic / Latex with mildew inhibitors

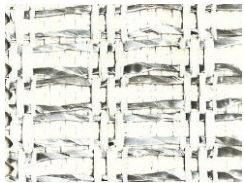
Performance
Flame retardance:
ASTM E-84 Grade A
EN 13501 B-s1, d0

Composition safety:
Cradle To Cradle Certificate ®

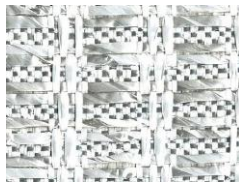
Physical performance:
QB/T 4034-2010 compliance

Lead Time
Sample: 1 day to send (A4 paper size free)
In-stock quantity: 2 days
Non-stock production: 15 days

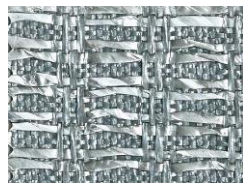
Variation
There can be a variation between sample material and finished product.
Stock cuttings are available for approval.



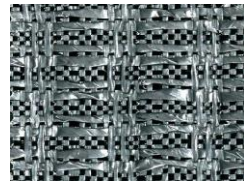
CX 86215-040



CX 86215-041



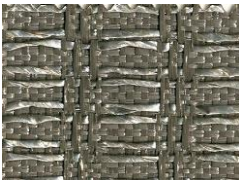
CX 86215-042



CX 86215-043



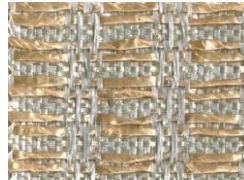
CX 86215-044



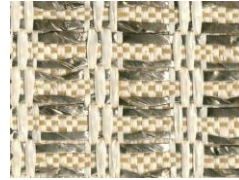
CX 86215-045



CX 86215-046



CX 86215-047



CX 86215-048



CX 86215-049



CX 86717

Composition
Woven of 100% HDPE

Width
137 cm / 54 inches

Length
50 m / 55 yards

Weight
300 gsm / 13 oz

Backing
Acrylic / Latex with mildew inhibitors

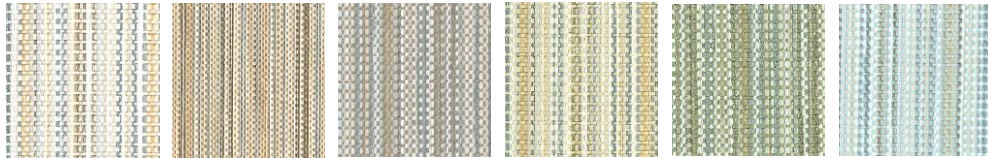
Performance
Flame retardance:
ASTM E-84 Grade A
EN 13501 B-s1, d0

Composition safety:
Cradle To Cradle Certificate ®

Physical performance:
QB/T 4034-2010 compliance

Lead Time
Sample: 1 day to send (A4 paper size free)
In-stock quantity: 2 days
Non-stock production: 15 days

Variation
There can be a variation between sample material and finished product.
Stock cuttings are available for approval.



CX 86717-020 CX 86717-021 CX 86717-022 CX 86717-023 CX 86717-024 CX 86717-025



CX 86717-026 CX 86717-027 CX 86717-028 CX 86717-029 CX 86717-030 CX 86717-031 CX 86717-032 CX 86717-033 CX 86717-034 CX 86717-035 CX 86717-036



CXB

Composition
Woven of 100% HDPE

Width
142 cm / 56 inches

Length
50 m / 55 yards

Weight
300 gsm / 13 oz

Backing
Acrylic / Latex with mildew inhibitors

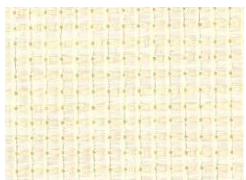
Performance
Flame retardance:
ASTM E-84 Grade A
EN 13501 B-s1, d0

Composition safety:
Cradle To Cradle Certificate ®

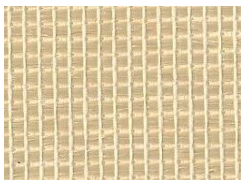
Physical performance:
QB/T 4034-2010 compliance

Lead Time
Sample: 1 day to send (A4 paper size free)
In-stock quantity: 2 days
Non-stock production: 15 days

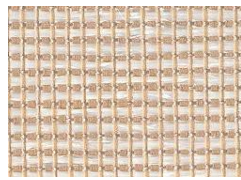
Variation
There can be a variation between sample material and finished product.
Stock cuttings are available for approval.



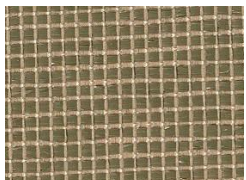
CXB 1



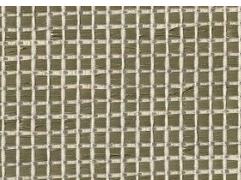
CXB 2



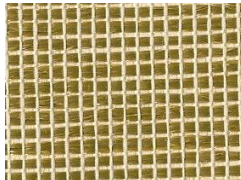
CXB 3



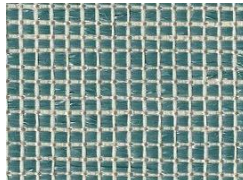
CXB 4



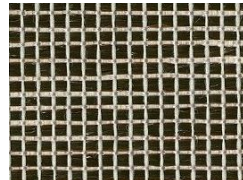
CXB 5



CXB 6



CXB 7



CXB 8



CXB 9



CXC

Composition
Woven of 100% HDPE

Width
142 cm / 56 inches

Length
50 m / 55 yards

Weight
300 gsm / 13 oz

Backing
Acrylic / Latex with mildew inhibitors

Performance
Flame retardance:
ASTM E-84 Grade A
EN 13501 B-s1, d0

Composition safety:
Cradle To Cradle Certificate ®

Physical performance:
QB/T 4034-2010 compliance

Lead Time
Sample: 1 day to send (A4 paper size free)
In-stock quantity: 2 days
Non-stock production: 15 days

Variation
There can be a variation between sample material and finished product.
Stock cuttings are available for approval.



CXC 1



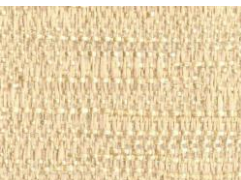
CXC 2



CXC 3



CXC 4



CXC 5



CXC 6



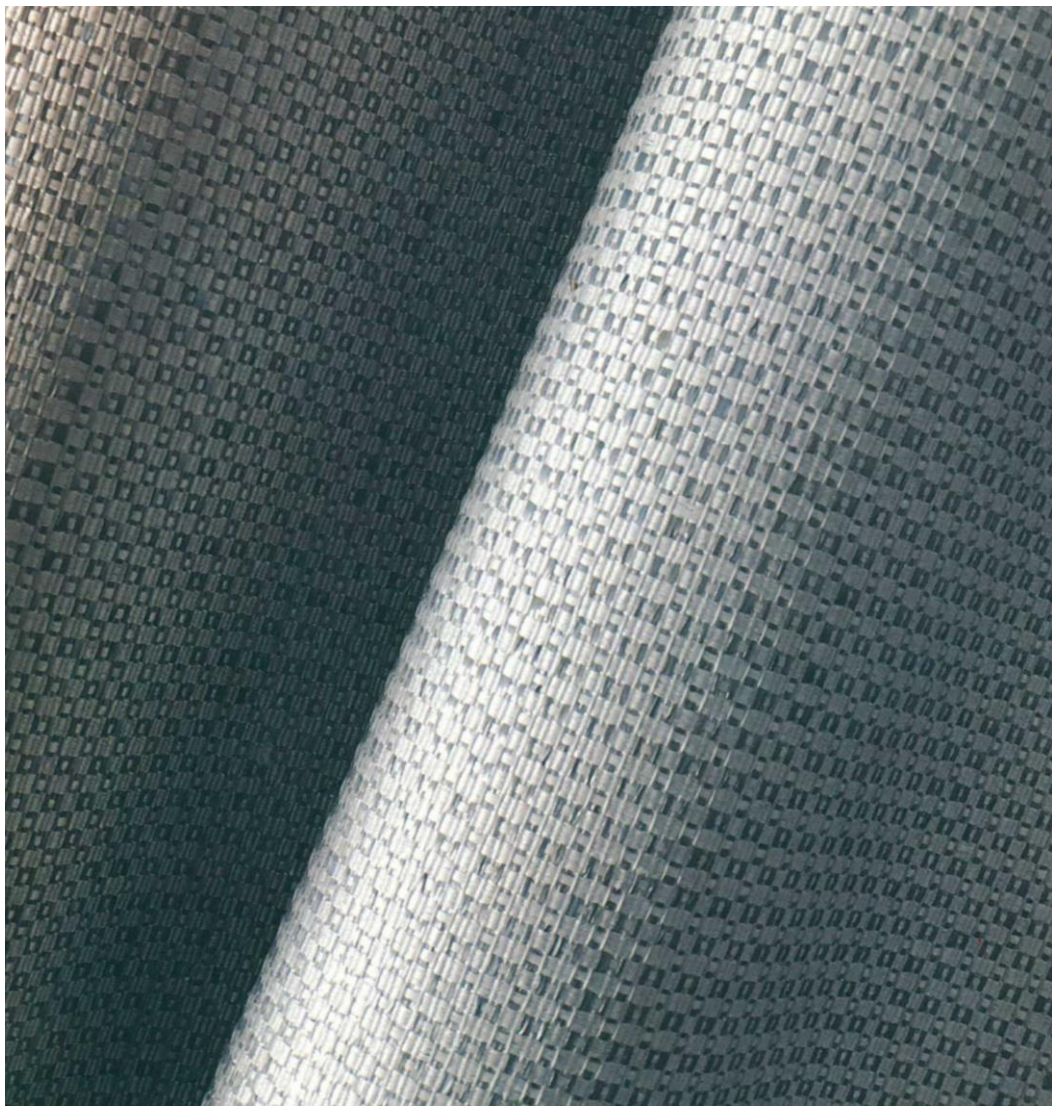
CXC 7



CXC 8



CXC 9



CXE

Composition

Woven of 60% polyolefin yarn 40% polyethylene

Width

142 cm / 56 inches

Length

50 m / 55 yards

Weight

300 gsm / 13 oz

Backing

Acrylic / Latex with mildew inhibitors

Performance

Flame retardance:

ASTM E-84 Grade A

EN 13501 B-s1, d0

Composition safety:

Cradle To Cradle Certificate ®

Physical performance:

QB/T 4034-2010 compliance

Lead Time

Sample: 1 day to send (A4 paper size free)

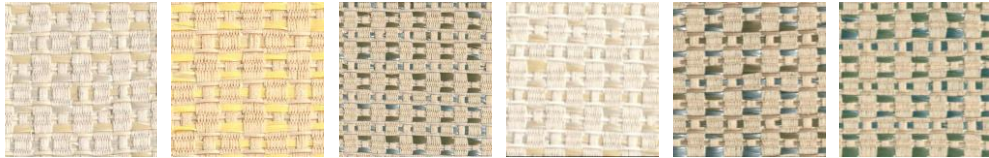
In-stock quantity: 2 days

Non-stock production: 15 days

Variation

There can be a variation between sample material and finished product.

Stock cuttings are available for approval.



CXE 1

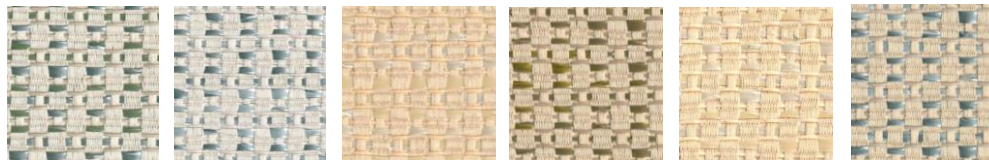
CXE 2

CXE 3

CXE 4

CXE 5

CXE 6



CXE 7

CXE 8

CXE 9

CXE 10

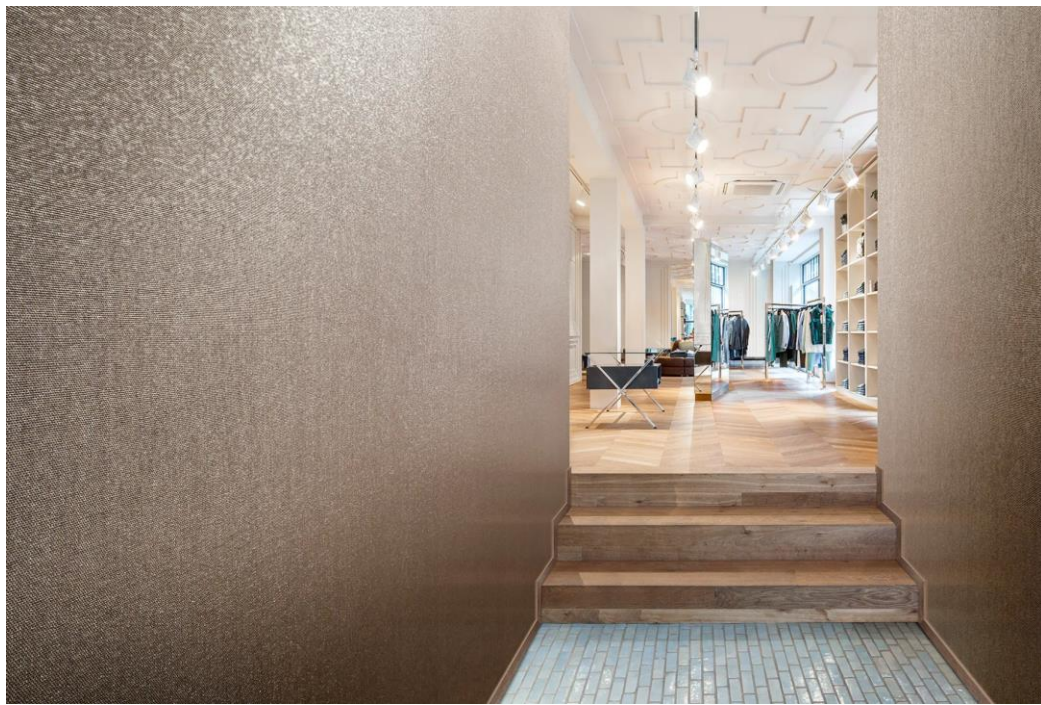
CXE 11

CXE 12

CXE 13

CXE 14

CXE 15



CX 6425 A

Composition
Woven of 100% HDPE

Width
137 cm / 54 inches

Length
50 m / 55 yards

Weight
300 gsm / 13 oz

Backing
Acrylic / Latex with mildew inhibitors

Performance
Flame retardance:
ASTM E-84 Grade A
EN 13501 B-s1, d0

Composition safety:
Cradle To Cradle Certificate ®

Physical performance:
QB/T 4034-2010 compliance

Lead Time
Sample: 1 day to send (A4 paper size free)
In-stock quantity: 2 days
Non-stock production: 15 days

Variation
There can be a variation between sample material and finished product.
Stock cuttings are available for approval.



CX 6425A-0400



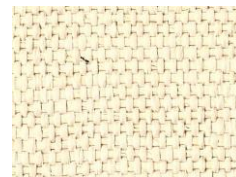
CX 6425A-0401



CX 6425A-0404



CX 6425A-0405



CX 6425A-0406



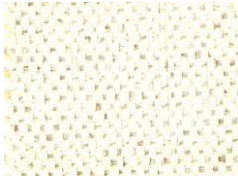
CX 6425A-0408



CX 6425A-0409



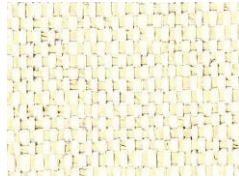
CX 6425A-0400



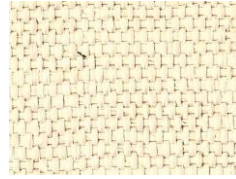
CX 6425A-0401



CX 6425A-0404



CX 6425A-0405



CX 6425A-0406



CX 6425A-0408



CX 6425A-0409



CX 6425A-0411



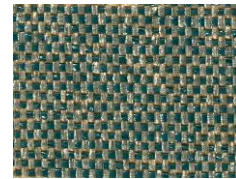
CX 6425A-0413



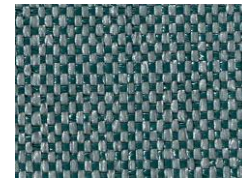
CX 6425A-0415



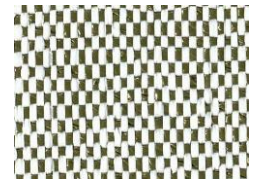
CX 6425A-0416



CX 6425A-0417



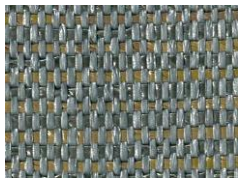
CX 6425A-0418



CX 6425A-0419



CX 6425A-0420



CX 6425A-0421



CX 6425A-0422



CX 6425A-0423



CX 6425A-0424



CX 6425A-0425



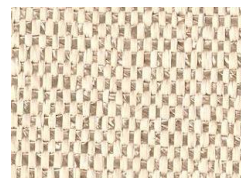
CX 6425A-0500



CX 6425A-0501



CX 6425A-0502



CX 6425A-0503



CX 6425A-0504



CX 6425A-0505



CX 6425A-0506



CX 6427 B

Composition
Woven of 100% HDPE

Width
137 cm / 54 inches

Length
50 m / 55 yards

Weight
300 gsm / 13 oz

Backing
Acrylic / Latex with mildew inhibitors

Performance
Flame retardance:
ASTM E-84 Grade A
EN 13501 B-s1, d0

Composition safety:
Cradle To Cradle Certificate ®

Physical performance:
QB/T 4034-2010 compliance

Lead Time
Sample: 1 day to send (A4 paper size free)
In-stock quantity: 2 days
Non-stock production: 15 days

Variation
There can be a variation between sample material and finished product.
Stock cuttings are available for approval.



CX 6427B-0306



CX 6427B-0700



CX 6427B-0703



CX 6427B-0705



CX 6427B-0707



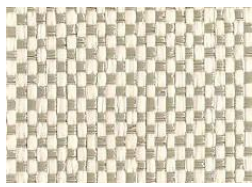
CX 6427B-0708



CX 6427B-0711



CX 6427B-0306



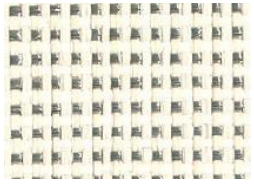
CX 6427B-0700



CX 6427B-0703



CX 6427B-0705



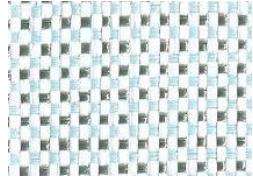
CX 6427B-0707



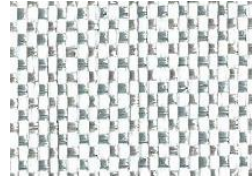
CX 6427B-0708



CX 6427B-0711



CX 6427B-0741



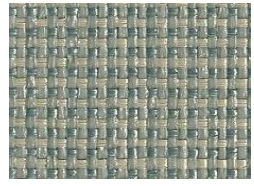
CX 6427B-0753



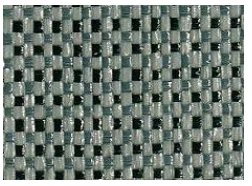
CX 6427B-0759



CX 6427B-0766



CX 6427B-0767



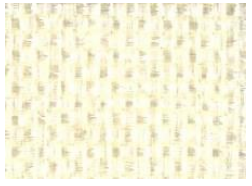
CX 6427B-0768



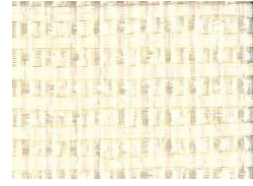
CX 6427B-0769



CX 6427B-0770



CX 6427B-0787



CX 6427B-0789



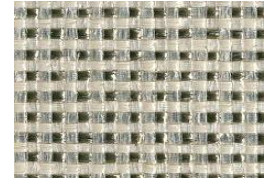
CX 6427B-0790



CX 6427B-0791



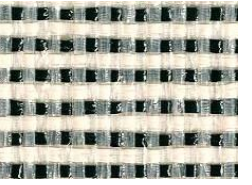
CX 6427B-0792



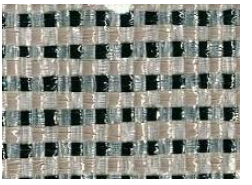
CX 6427B-0795



CX 6427B-0796



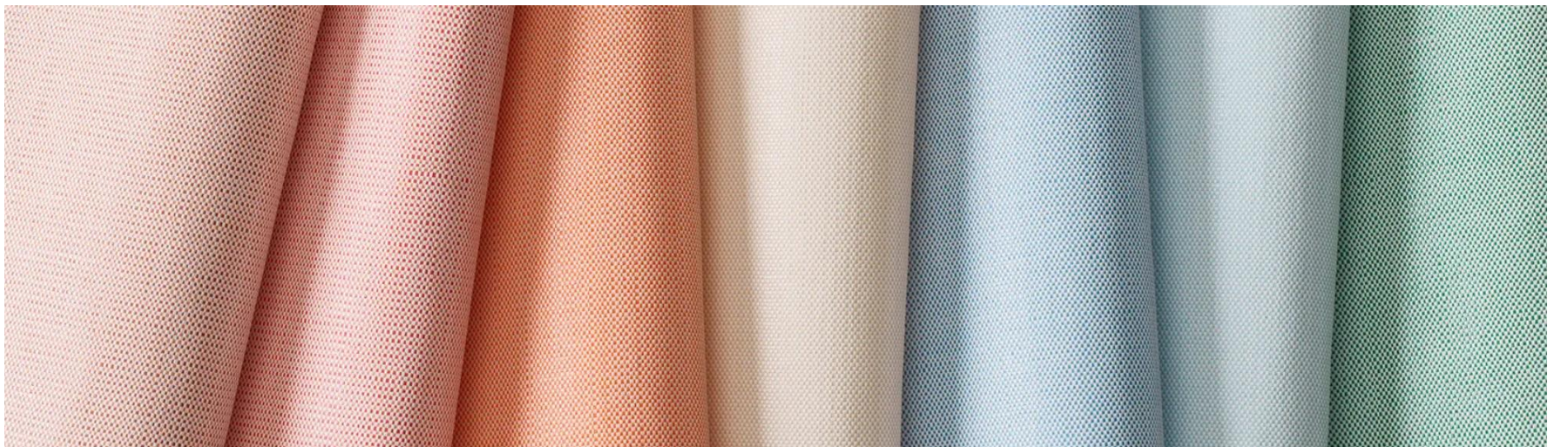
CX 6427B-0798



CX 6427B-0799



CX 6427B-0711





CX 8000

Composition
Woven of 100% HDPE

Width
137 cm / 54 inches

Length
50 m / 55 yards

Weight
300 gsm / 13 oz

Backing
Acrylic / Latex with mildew inhibitors

Performance
Flame retardance:
ASTM E-84 Grade A
EN 13501 B-s1, d0

Composition safety:
Cradle To Cradle Certificate ®

Physical performance:
QB/T 4034-2010 compliance

Lead Time
Sample: 1 day to send (A4 paper size free)
In-stock quantity: 2 days
Non-stock production: 15 days

Variation
There can be a variation between sample material and finished product.
Stock cuttings are available for approval.



CX 8001



CX 8002



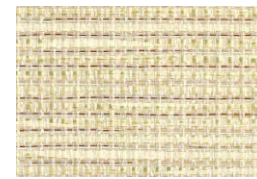
CX 8003



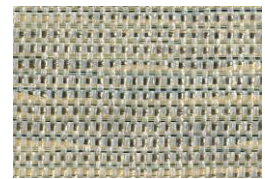
CX 8004



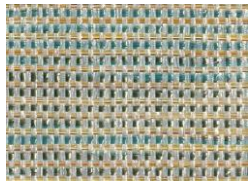
CX 8005



CX 8006



CX 8007



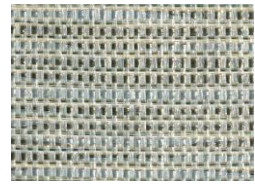
CX 8001



CX 8002



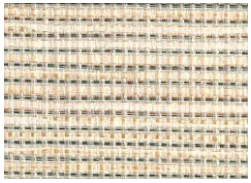
CX 8003



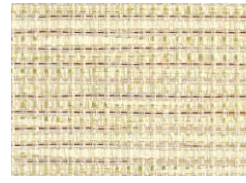
CX 8004



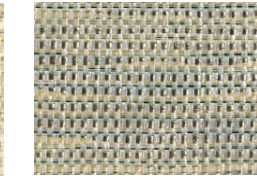
CX 8005



CX 8006



CX 8007



CX 8008



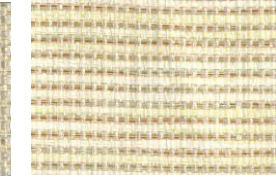
CX 8009



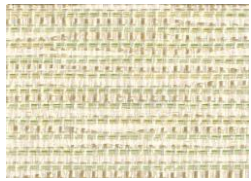
CX 8010



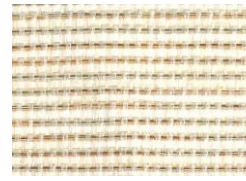
CX 8011



CX 8012



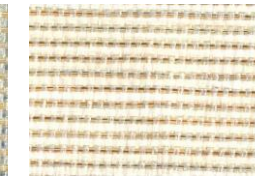
CX 8013



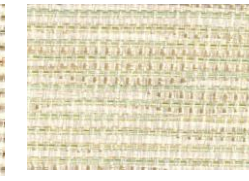
CX 8014



CX 8015



CX 8016



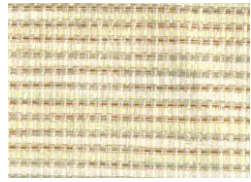
CX 8017



CX 8018



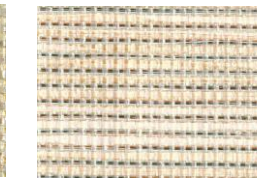
CX 8019



CX 8020



CX 8021



CX 8022



CX 8023



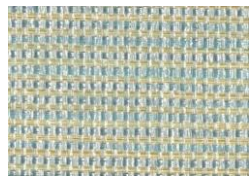
CX 8024



CX 8025



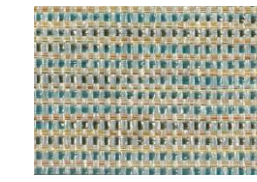
CX 8026



CX 8027



CX 8028



CX 8029



CX 8030



CX 86217

Composition
Woven of 100% HDPE

Width
137 cm / 54 inches

Length
50 m / 55 yards

Weight
300 gsm / 13 oz

Backing
Acrylic / Latex with mildew inhibitors

Performance
Flame retardance:
ASTM E-84 Grade A
EN 13501 B-s1, d0

Composition safety:
Cradle To Cradle Certificate ®

Physical performance:
QB/T 4034-2010 compliance

Lead Time
Sample: 1 day to send (A4 paper size free)
In-stock quantity: 2 days
Non-stock production: 15 days

Variation
There can be a variation between sample material and finished product.
Stock cuttings are available for approval.



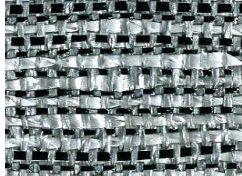
CX 86217-030



CX 86217-031



CX 86217-032



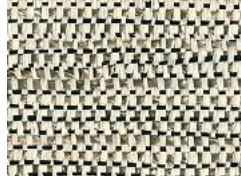
CX 86217-033



CX 86217-034



CX 86217-035



CX 86217-036



CX 86217-037



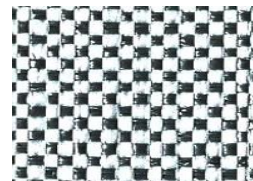
CX 86423-01



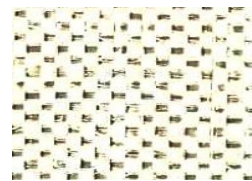
CX 86423-02



CX 86423-03



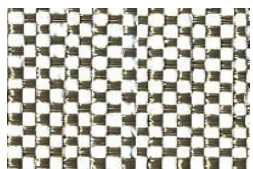
CX 86423-04



CX 86423-05



CX 86423-06



CX 86423-07



CX 86423-08



CX 86423-09



CX 86423-10



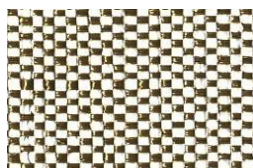
CX 86423-11



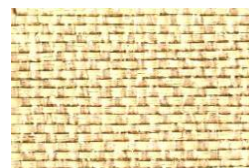
CX 86423-12



CX 86423-13



CX 86423-14



CX 86423-15



CX 86423-16



CX 86423-17



CX 86423-18



CX 86423-19



CX 86423-20



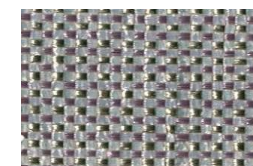
CX 86423-21



CX 86423-22



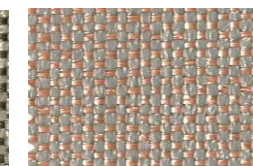
CX 86423-23



CX 86423-24



CX 86423-25



CX 86423-26



CX 86423-27



CX 86423-28



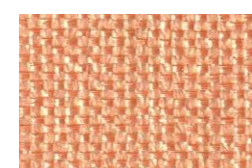
CX 86423-29



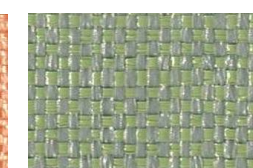
CX 86423-30



CX 86423-31



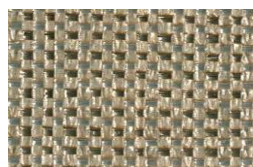
CX 86423-32



CX 86423-33



CX 86423-34



CX 86423-35



CX 86423-36



CX 86423-37



CX 86423-38



CX 86423-39



CX 86423-40



CX 86423-41



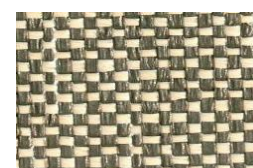
CX 86423-42



CX 86423-43



CX 86423-44



CX 86423-45



CX 86603

Composition
Woven of 100% HDPE

Width
137 cm / 54 inches

Length
50 m / 55 yards

Weight
300 gsm / 13 oz

Backing
Acrylic / Latex with mildew inhibitors

Performance
Flame retardance:
ASTM E-84 Grade A
EN 13501 B-s1, d0

Composition safety:
Cradle To Cradle Certificate ®

Physical performance:
QB/T 4034-2010 compliance

Lead Time
Sample: 1 day to send (A4 paper size free)
In-stock quantity: 2 days
Non-stock production: 15 days

Variation
There can be a variation between sample material and finished product.
Stock cuttings are available for approval.



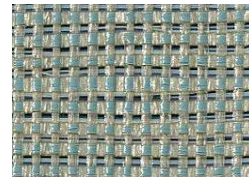
CX 86603-020



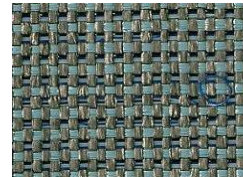
CX 86603-021



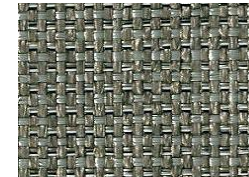
CX 86603-022



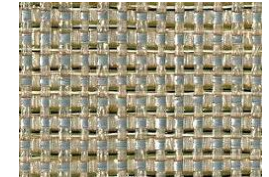
CX 86603-023



CX 86603-024



CX 86603-025



CX 86603-026



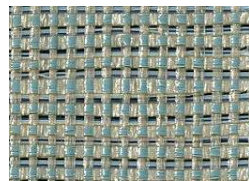
CX 86603-020



CX 86603-021



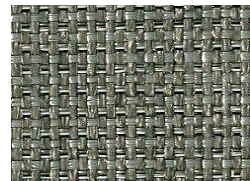
CX 86603-022



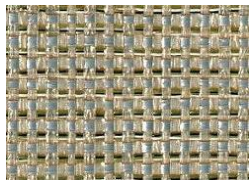
CX 86603-023



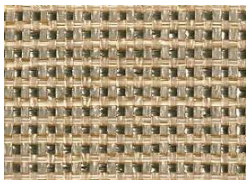
CX 86603-024



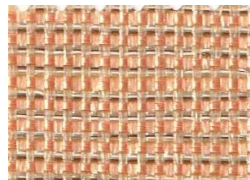
CX 86603-025



CX 86603-026



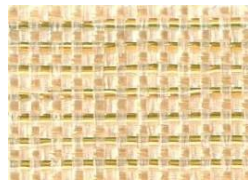
CX 86603-027



CX 86603-028



CX 86603-029



CX 86603-030



CX 86603-031



CX 86603-032



CX 86603-033



CX 86603-034



CX 86603-035



CX 86603-036



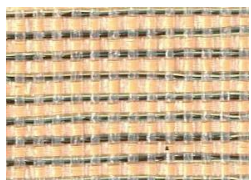
CX 86603-037



CX 86603-038



CX 86603-039



CX 86603-040



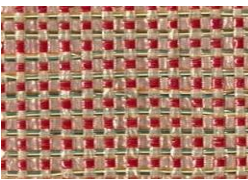
CX 86603-041



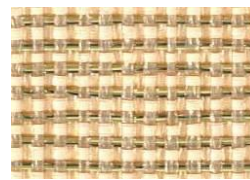
CX 86603-042



CX 86603-043



CX 86603-044



CX 86603-045



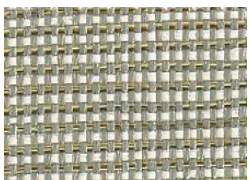
CX 86603-046



CX 86603-047



CX 86603-048



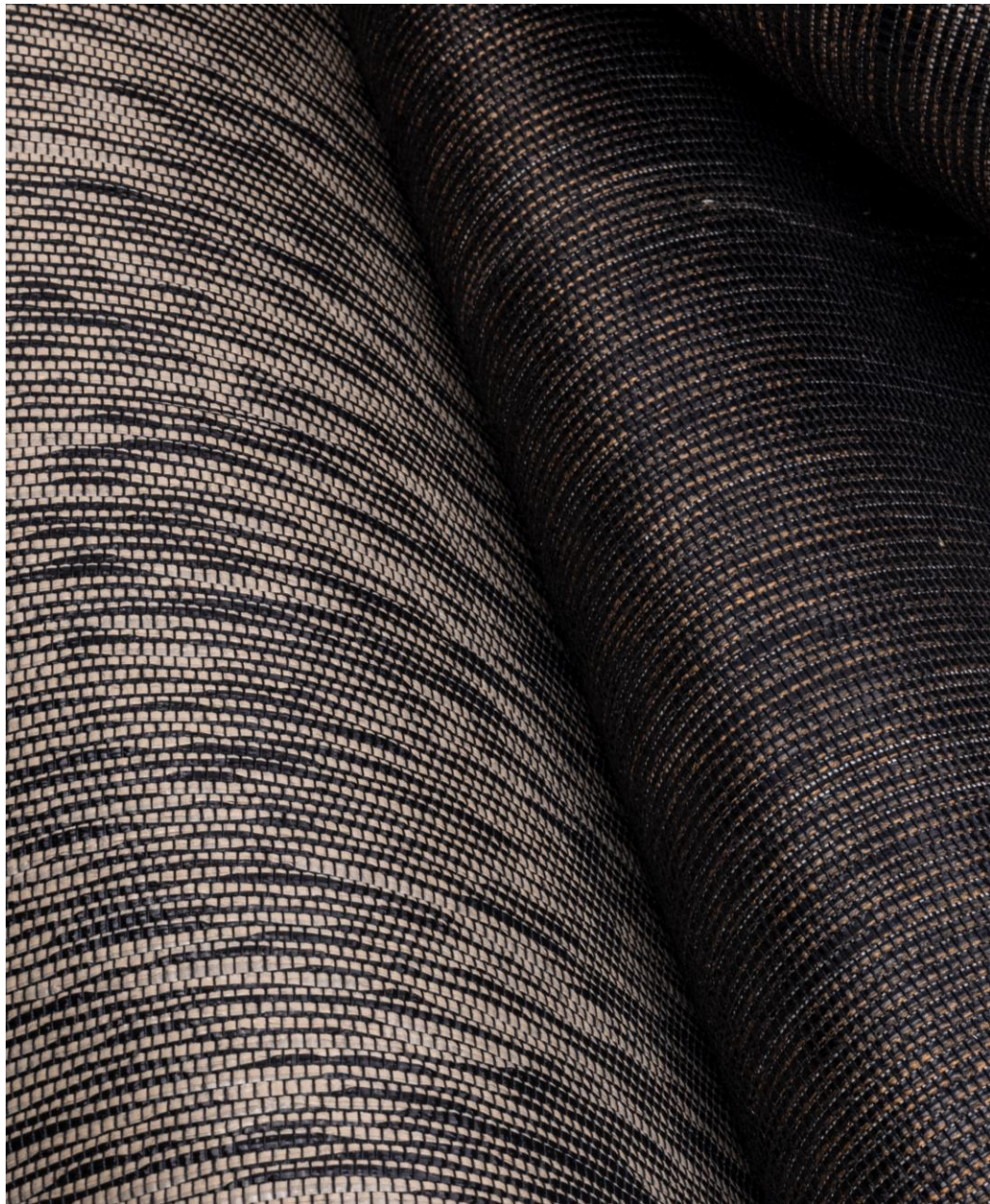
CX 86603-049



CX 86603-050



CX 86603-051



CXA

Composition

Woven of 60% polyolefin yarn 40% polyethylene

Width

137 cm / 54 inches

Length

50 m / 55 yards

Weight

300 gsm / 13 oz

Backing

Acrylic / Latex with mildew inhibitors

Performance

Flame retardance:

ASTM E-84 Grade A

EN 13501 B-s1, d0

Composition safety:

Cradle To Cradle Certificate ®

Physical performance:

QB/T 4034-2010 compliance

Lead Time

Sample: 1 day to send (A4 paper size free)

In-stock quantity: 2 days

Non-stock production: 15 days

Variation

There can be a variation between sample material and finished product.

Stock cuttings are available for approval.



CXA 1001



CXA 1002



CXA 1003



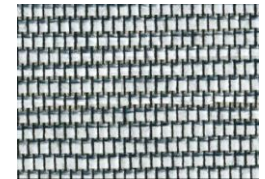
CXA 1004



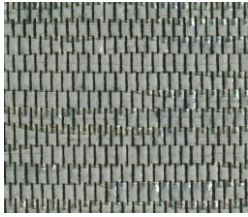
CXA 1005



CXA 1006



CXA 1007



CXA 1001



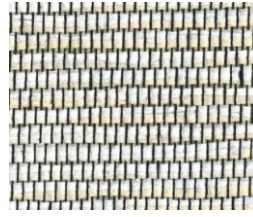
CXA 1002



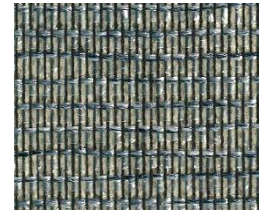
CXA 1003



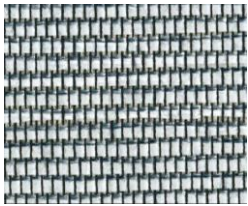
CXA 1004



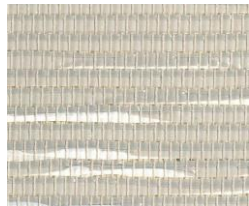
CXA 1005



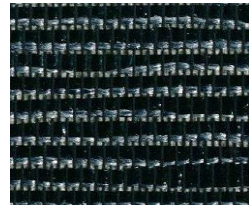
CXA 1006



CXA 1007



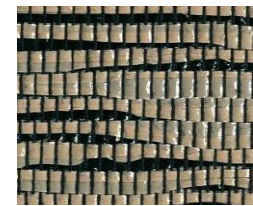
CXA 1008



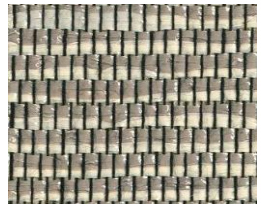
CXA 1009



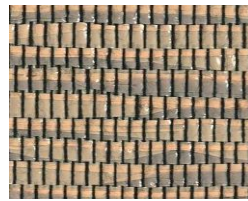
CXA 1010



CXA 1011



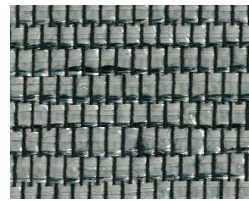
CXA 1012



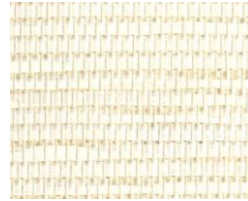
CXA 1013



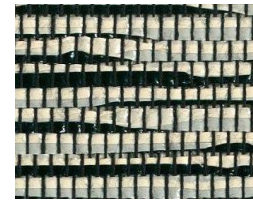
CXA 1014



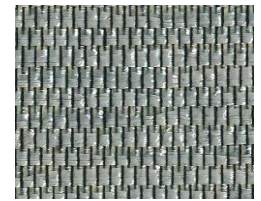
CXA 1015



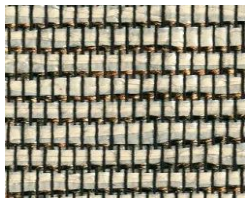
CXA 1016



CXA 1017



CXA 1018



CXA 1019



CXA 1020



CXA 1021



CONTACT US FOR SAMPLES!

For latest update:
www.yorklon.en.alibaba.com
www.yorklonltd.com