



YORKLUN

TEXTILE WOVEN WALLCOVERING COLLECTION

HOSPITALITY | COMMERCIAL | RETAIL | RESIDENTIAL

INTRODUCTION

Textile plays an important role nowadays in interiors. As 'luxury' becomes synonymous with comfort and wellbeing, we're returning to the essence of our relationship with textiles as a sort of second skin – a mediator between our bodies and the environment, it is soft in touch, and also it needs to be functional for contract application.

We are experienced in working with natural fibers including linen, silk, wool, and cotton. Our textile qualities are shaped with a great number of finishing possibilities: dyeing, conventional, digital printing, embossing, flock, laser cutting, crushing, tumbling, brushing, laminating and the application of different coatings and metallics.





DERIVED FROM NATURE

FROM NATURE TO WALL

We are experienced in working with natural fibers including linen, silk, wool, and cotton. The collection offers a highly sophisticated take on organic materials: a premium-quality, durable wallcovering that will stand the test of time.



PUSH BEYOND BOUNDARIES

BEAUTIFUL & FUNCTIONAL

We creatively apply Lyocell fiber to be products in our latest collection. Derived from nature, the fiber is produced with sustainable wood, under a production process that has low consumption on water and chemicals.



OBSESSION ON PERFECTION

DETAILS CRAFTSMANSHIP

We are obsessed to explore new techniques and technologies. We source the latest yarn which has the potential in the design trend, we adjust our machines to adapt different production requirements.



WATER RESISTANT FINISH

EASY TO MAINTAIN

As part of the finishing process, textile wallcovering can be finished with some level of protective coating. This water-resistant finish provides a level of protection against liquid absorption and spills and makes it easy to maintain.



ESTABLISHED PROJECTS

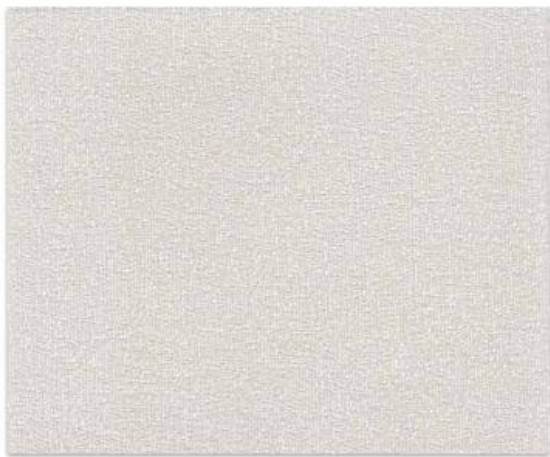
TRUSTED GLOBAL PARTNERS

Each year we develop new collections that favor designers and clients. From where we began, we have contributed to well known projects around the globe with our delicate wallcovering materials.





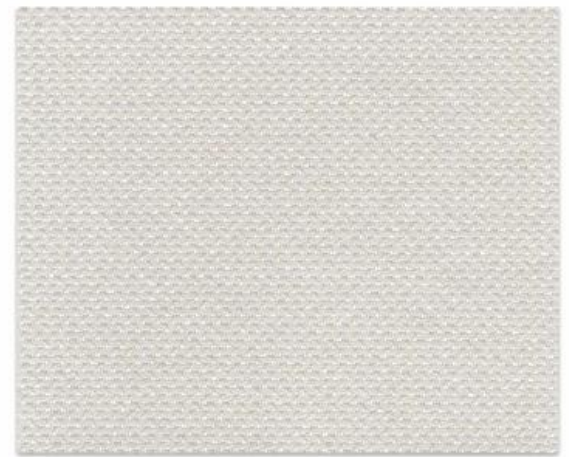
YD2809



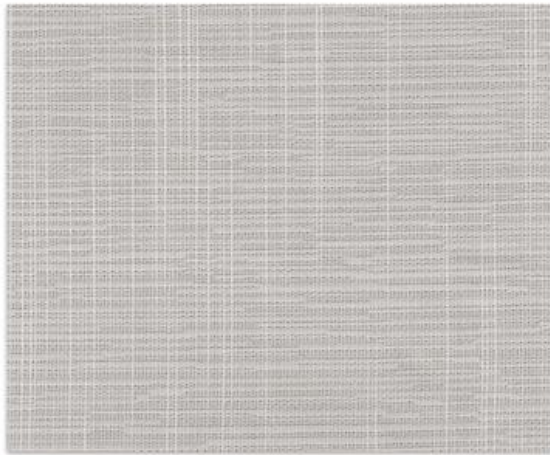
YD1803



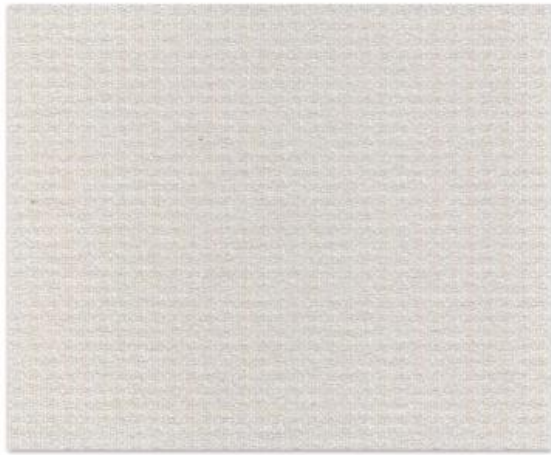
YD1806



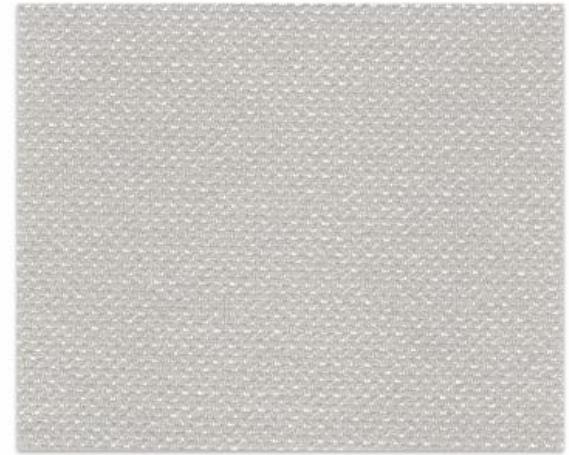
YD2604



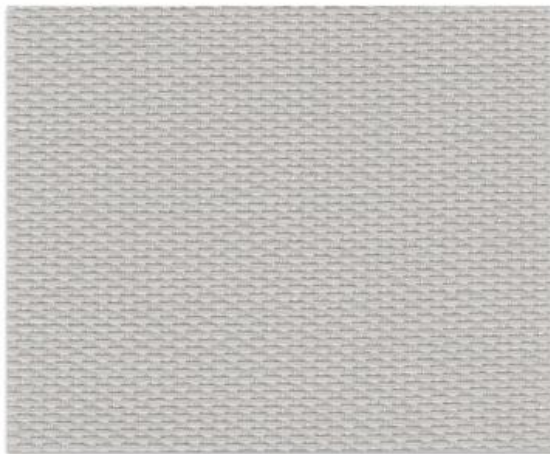
YD2628



YD1801



YD2602



YD2601



YD4102



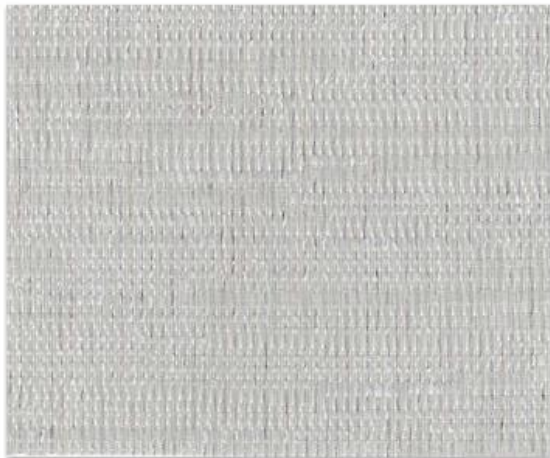
YD2807



YD2603



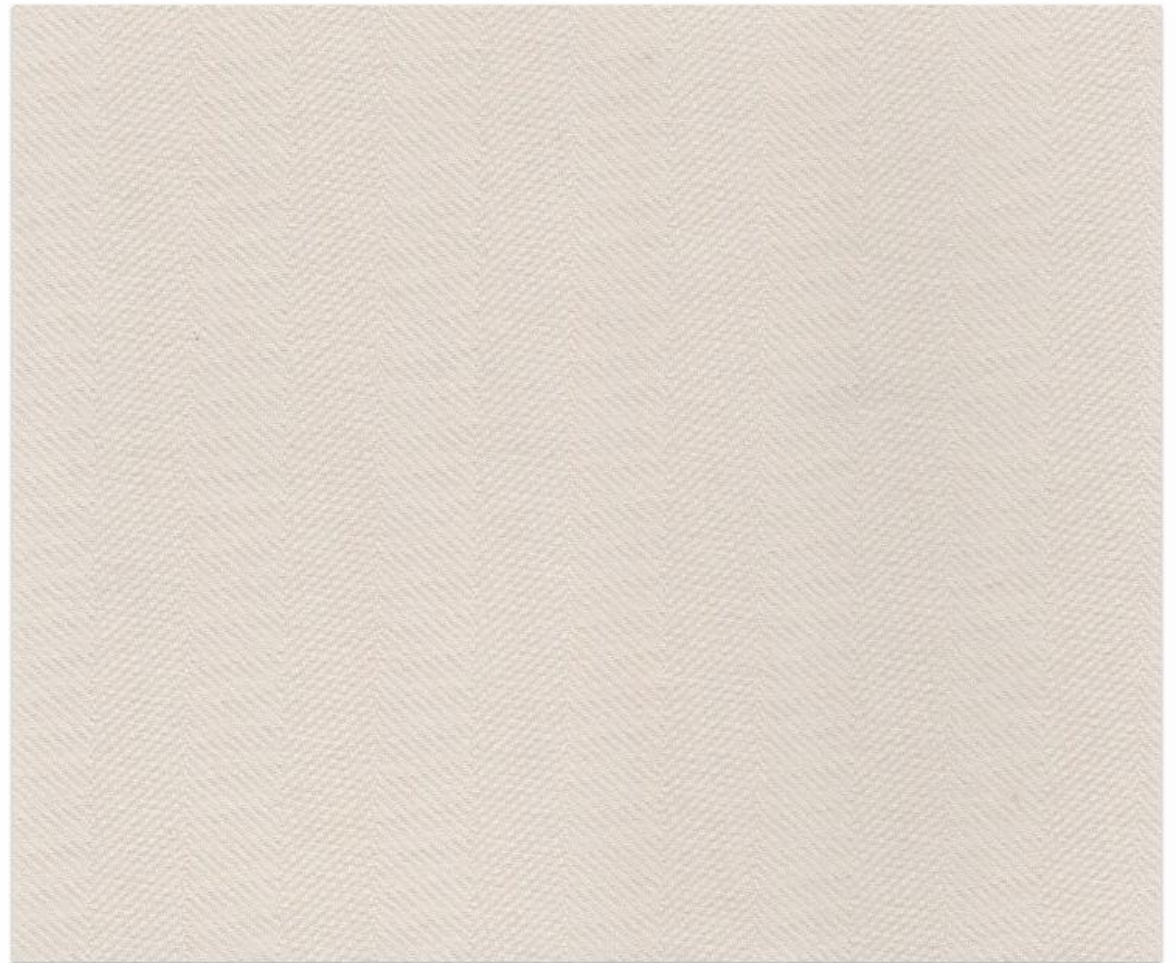
YE1803



YD2809



YD2610



YD1802

MODEL	DIMENSION	COMPOSITION
YD1803	280 cm = 110 inch / 137 cm = 54 inch	35% Acrylic, 65% Polyester
YD1806	280 cm = 110 inch / 137 cm = 54 inch	25% Viscose, 75% Polyester
YD2628	280 cm = 110 inch / 137 cm = 54 inch	100% Polyester
YD1801	280 cm = 110 inch / 137 cm = 54 inch	15% Wool, 60% Acrylic, 25% Polyester
YD2601	280 cm = 110 inch / 137 cm = 54 inch	Linen
YD4102	280 cm = 110 inch / 137 cm = 54 inch	Polyester
YD2604	280 cm = 110 inch / 137 cm = 54 inch	Cotton, Linen
YD2603	280 cm = 110 inch / 137 cm = 54 inch	Cotton, Linen
YD2602	280 cm = 110 inch / 137 cm = 54 inch	Cotton, Linen
YD2809	280 cm = 110 inch / 137 cm = 54 inch	Polyester
YD2807	280 cm = 110 inch / 137 cm = 54 inch	Polyester
YD2610	280 cm = 110 inch / 137 cm = 54 inch	Polyester
YE1803	137 cm = 54 inch	10% P, 10% N, 15% W, 20% A, 45% V
YD1802	280 cm = 110 inch / 137 cm = 54 inch	15% Wool, 60% Acrylic, 25% Polyester

* A stain repellent finish prevents water based splashes penetrating and staining the material.

* Periodic vacuuming is recommended to prevent dust from building up on the materials surface.

* GB 18585-2001 composition safety compliance, the product does not contain PVC, chlorine, plasticizers, heavy metals or harmful dyes in production.

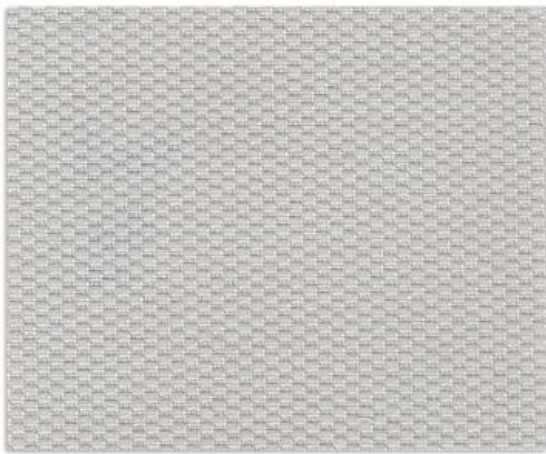
* Fire rating: ASTM E84 Class A and ES 13501 Class B available.

* Despite all efforts, we cannot guarantee the accuracy of colors and sheen effects on your screen.

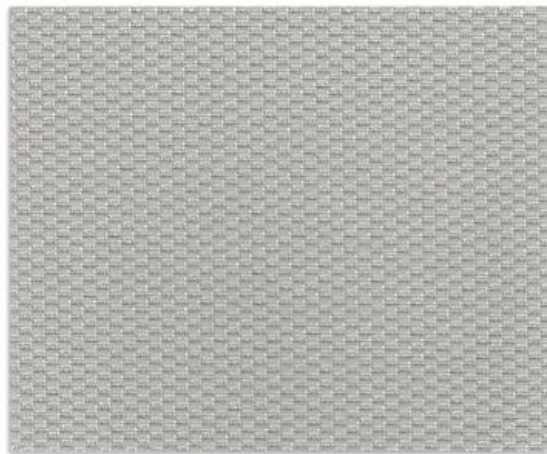
* The display of color depends on the settings, resolution and on the light of the surroundings.



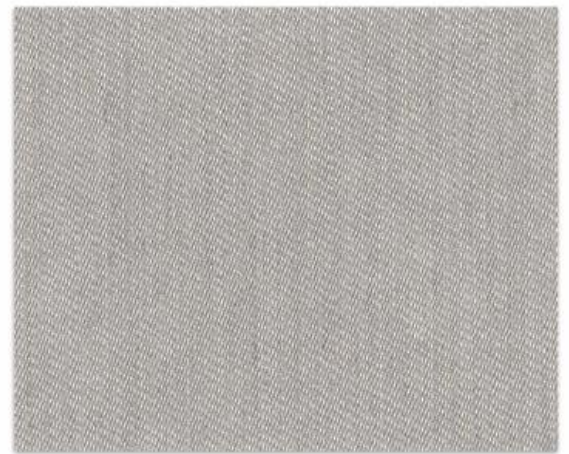
YD2614



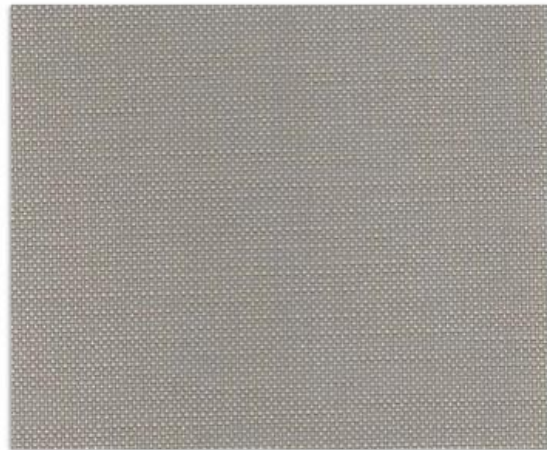
YD2605



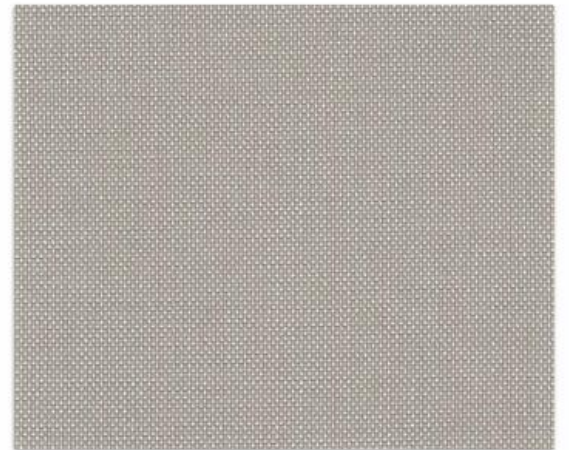
YD2611



YD1817



YD4103



YD4104



YD2607



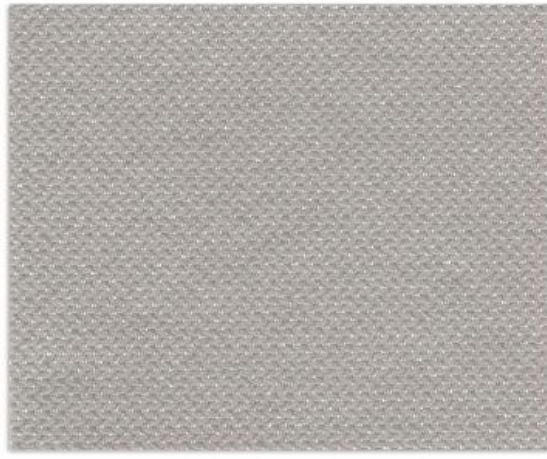
YD2614



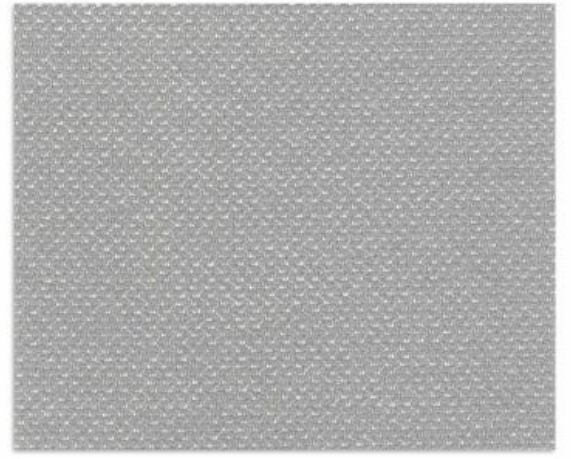
YD2612



YD1808



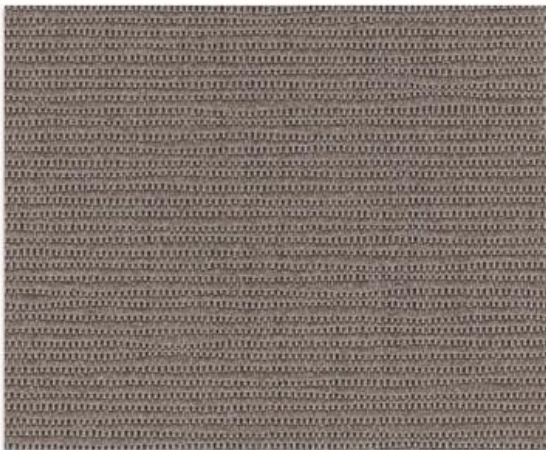
YD2608



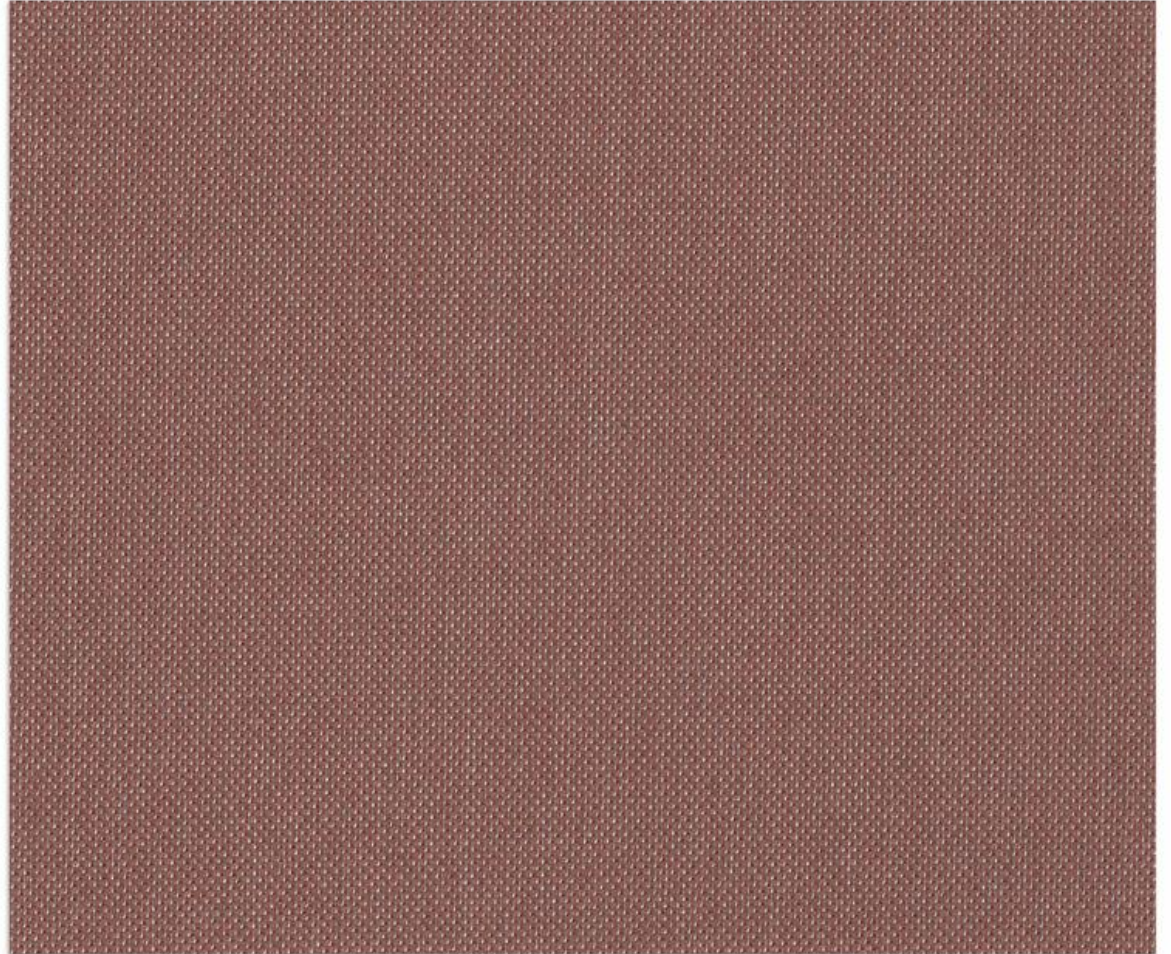
YD2630



YD2606



YD2613



YD2609

MODEL	DIMENSION	COMPOSITION
YD2605	280 cm = 110 inch / 137 cm = 54 inch	Linen
YD2611	280 cm = 110 inch / 137 cm = 54 inch	Linen
YD4103	280 cm = 110 inch / 137 cm = 54 inch	100% Polyester
YD2607	280 cm = 110 inch / 137 cm = 54 inch	Polyester
YD2614	280 cm = 110 inch / 137 cm = 54 inch	Polyester
YD1817	280 cm = 110 inch / 137 cm = 54 inch	40% Viscose, 60% Polyester
YD1808	280 cm = 110 inch / 137 cm = 54 inch	40% Viscose, 60% Polyester
YD4104	280 cm = 110 inch / 137 cm = 54 inch	100% Polyester
YD2606	280 cm = 110 inch / 137 cm = 54 inch	100% Polyester
YD2612	280 cm = 110 inch / 137 cm = 54 inch	100% Polyester
YD2613	280 cm = 110 inch / 137 cm = 54 inch	100% Polyester
YD2608	280 cm = 110 inch / 137 cm = 54 inch	Cotton, Linen
YD2630	280 cm = 110 inch / 137 cm = 54 inch	Cotton, Linen
YD2609	280 cm = 110 inch / 137 cm = 54 inch	100% Polyester

* A stain repellent finish prevents water based splashes penetrating and staining the material.

* Periodic vacuuming is recommended to prevent dust from building up on the materials surface.

* GB 18585-2001 composition safety compliance, the product does not contain PVC, chlorine, plasticizers, heavy metals or harmful dyes in production.

* Fire rating: ASTM E84 Class A and ES 13501 Class B available.

* Despite all efforts, we cannot guarantee the accuracy of colors and sheen effects on your screen.

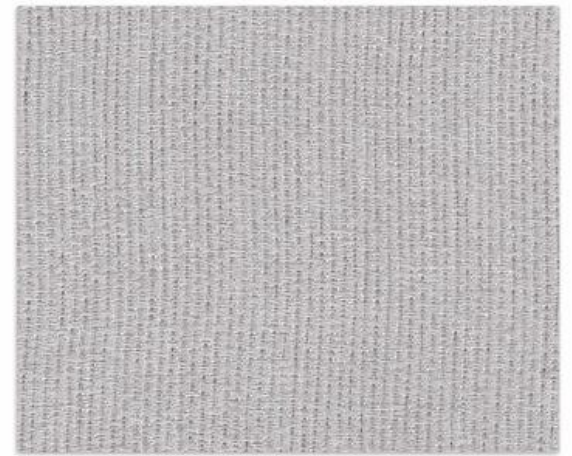
* The display of color depends on the settings, resolution and on the light of the surroundings.



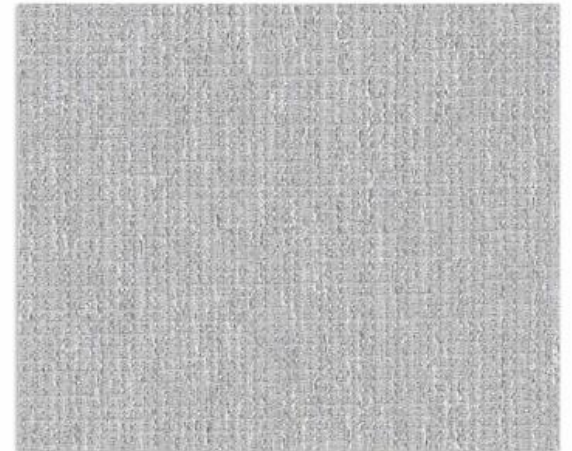
YD2803



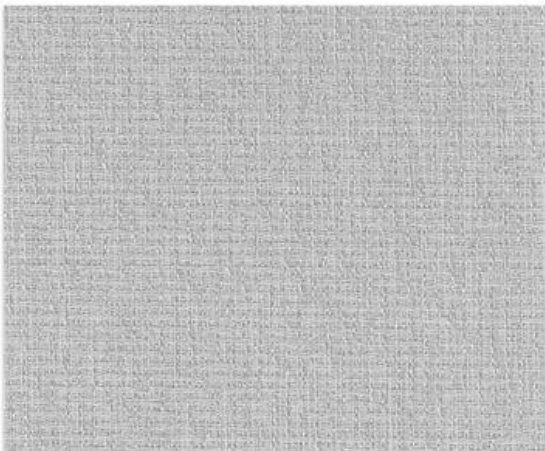
YD2617



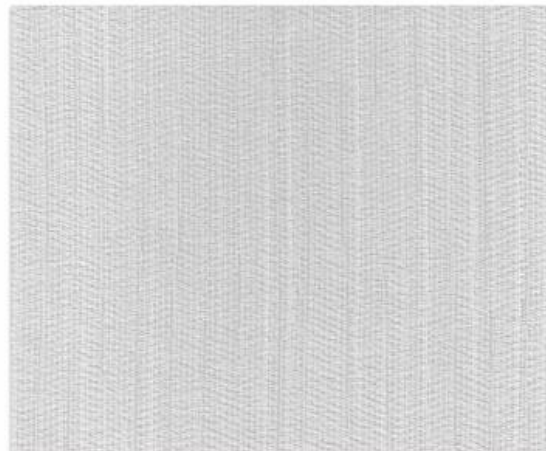
YD1603



YD2810



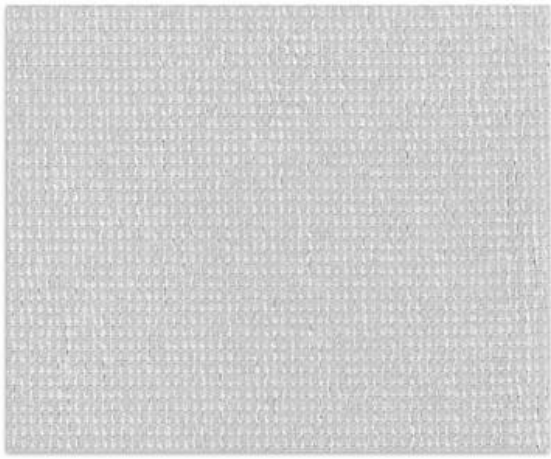
YD2803



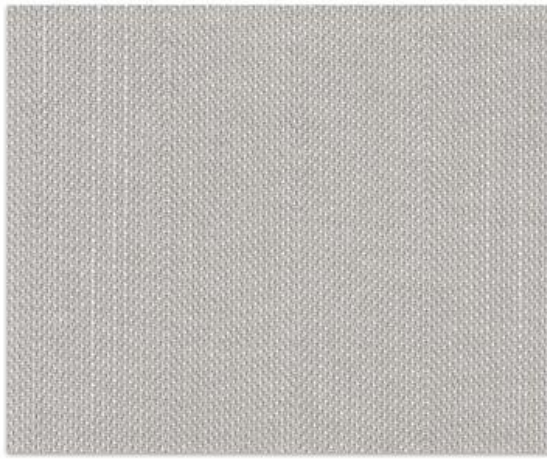
YD2802



YD1610



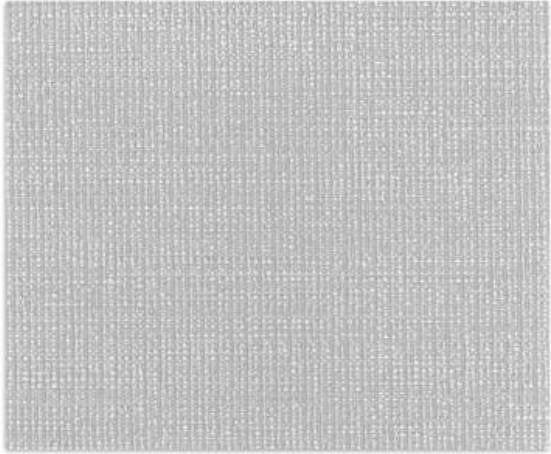
YD2806



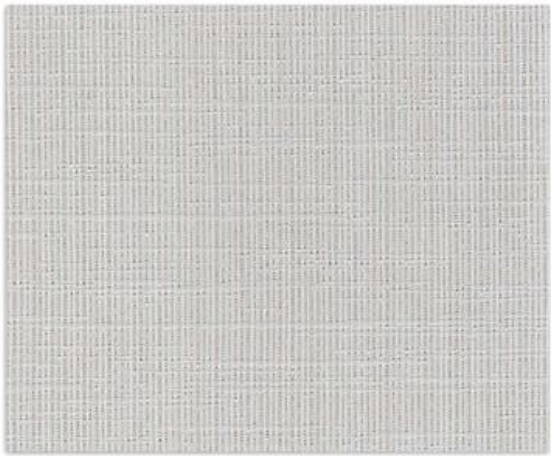
YD2629



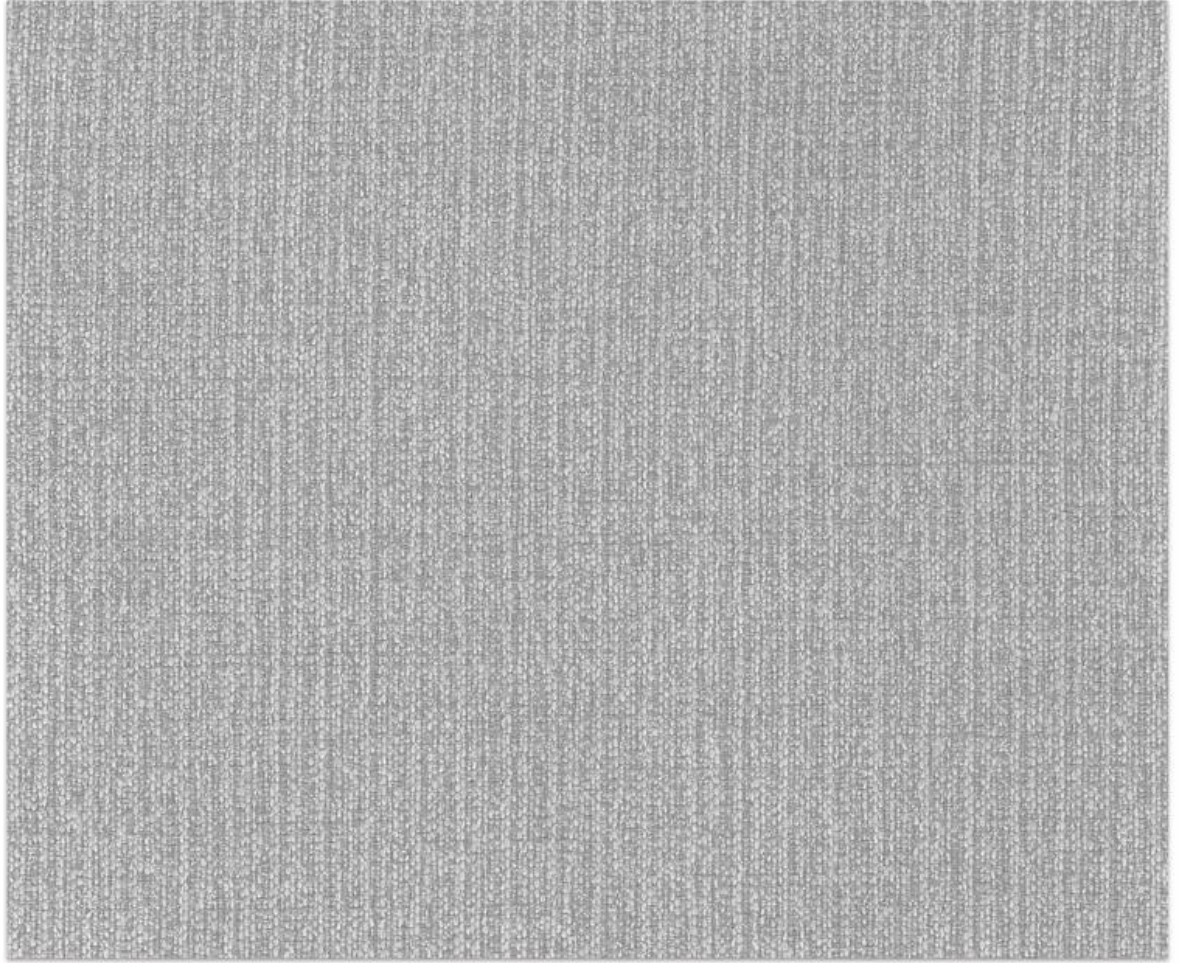
YD1814



YD2801



YD2808



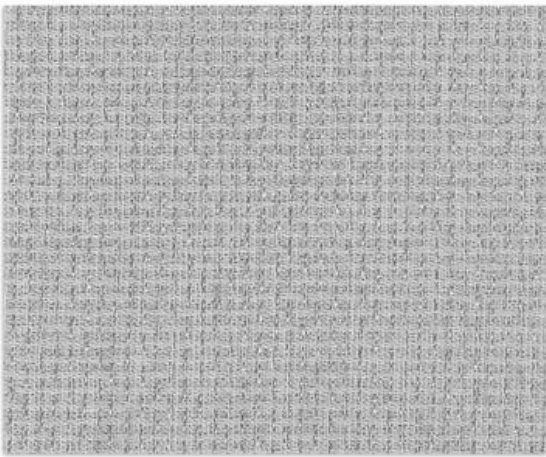
YD1606

MODEL	DIMENSION	COMPOSITION
YD2617	280 cm = 110 inch / 137 cm = 54 inch	Polyester
YD2803	280 cm = 110 inch / 137 cm = 54 inch	Polyester
YD2802	280 cm = 110 inch / 137 cm = 54 inch	Polyester
YD1603	280 cm = 110 inch / 137 cm = 54 inch	Cotton
YD2806	280 cm = 110 inch / 137 cm = 54 inch	Polyester
YD2810	280 cm = 110 inch / 137 cm = 54 inch	Polyester
YD2801	280 cm = 110 inch / 137 cm = 54 inch	Polyester
YD1610	290 cm = 114 inch / 137 cm = 54 inch	Cotton
YD2808	280 cm = 110 inch / 137 cm = 54 inch	Polyester
YD2629	280 cm = 110 inch / 137 cm = 54 inch	100% Polyester
YD1814	280 cm = 110 inch / 137 cm = 54 inch	15% W, 15% A, 10% V, 15% P, 45% P
YD1606	280 cm = 110 inch / 137 cm = 54 inch	Cotton

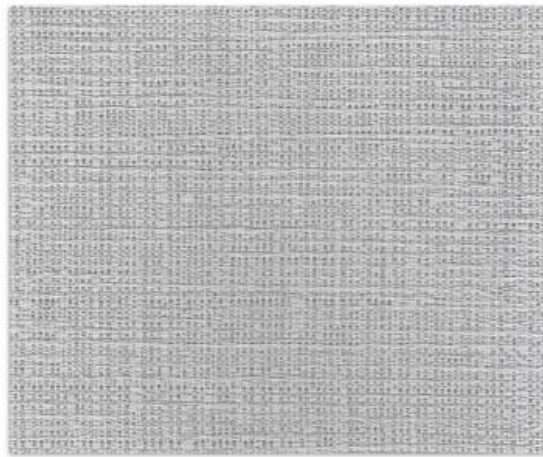
- * A stain repellent finish prevents water based splashes penetrating and staining the material.
- * Periodic vacuuming is recommended to prevent dust from building up on the materials surface.
- * GB 18585-2001 composition safety compliance, the product does not contain PVC, chlorine, plasticizers, heavy metals or harmful dyes in production.
- * Fire rating: ASTM E84 Class A and ES 13501 Class B available.
- * Despite all efforts, we cannot guarantee the accuracy of colors and sheen effects on your screen.
- * The display of color depends on the settings, resolution and on the light of the surroundings.



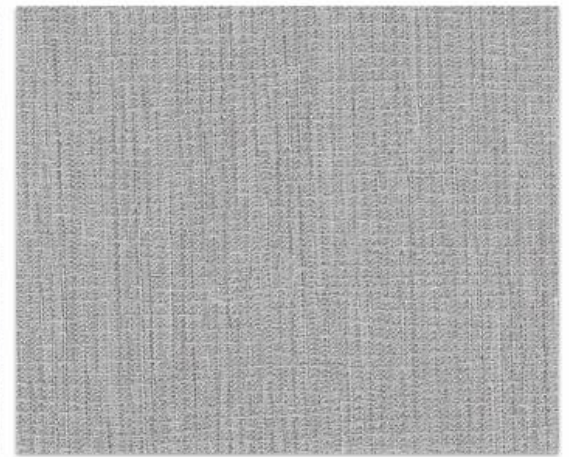
YD2804



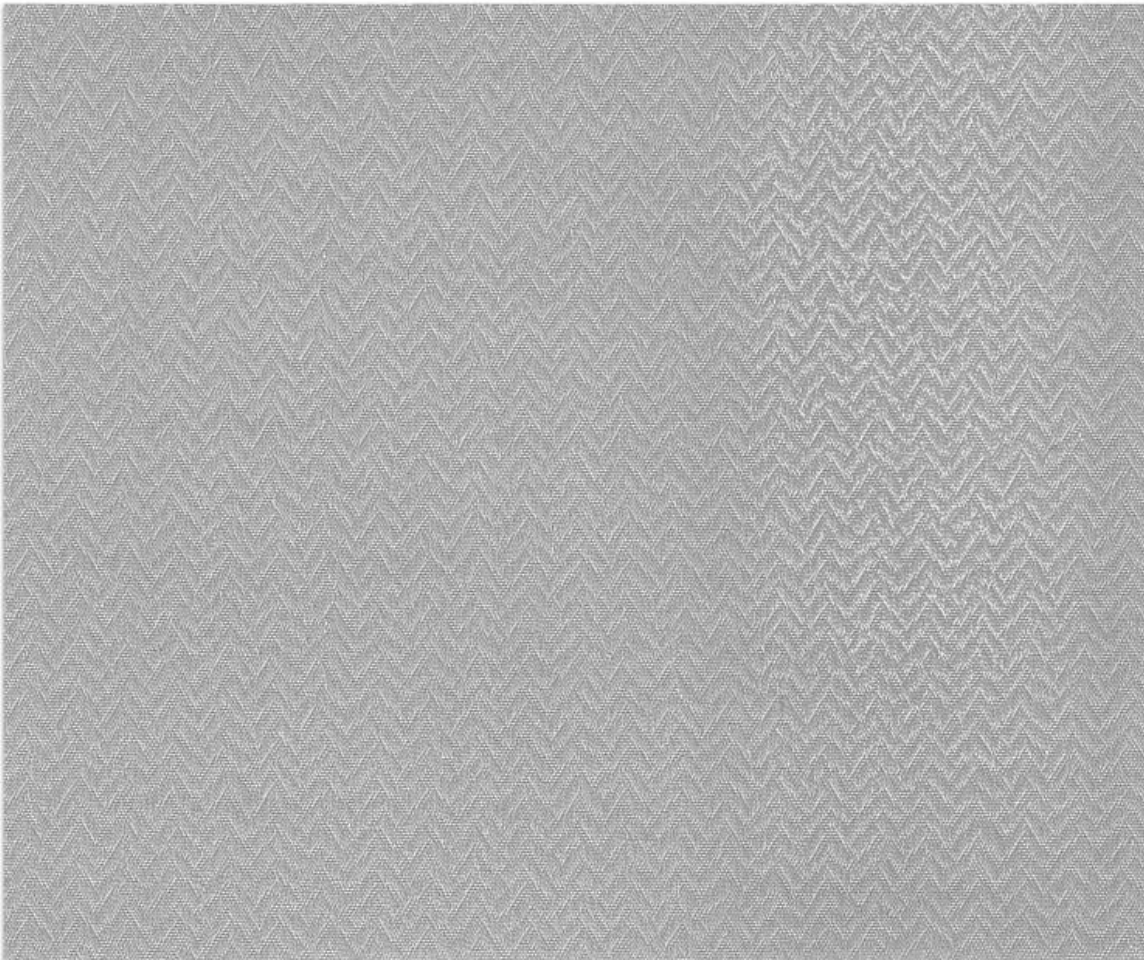
YD1601



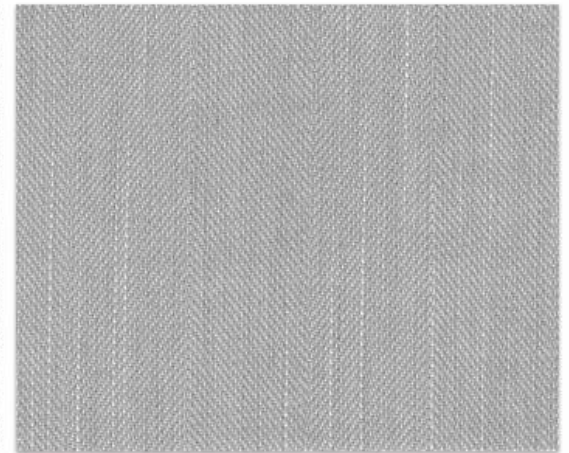
YD2804



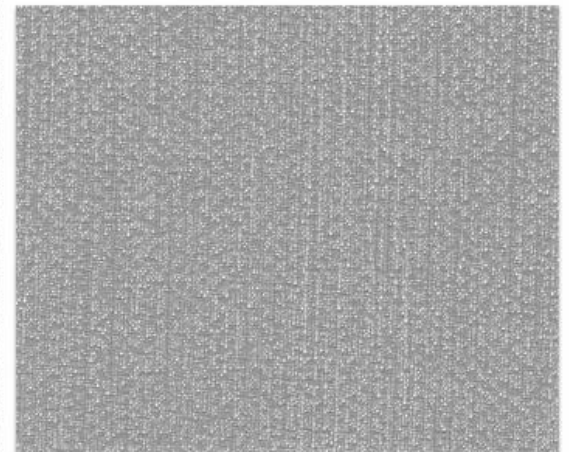
YD1615



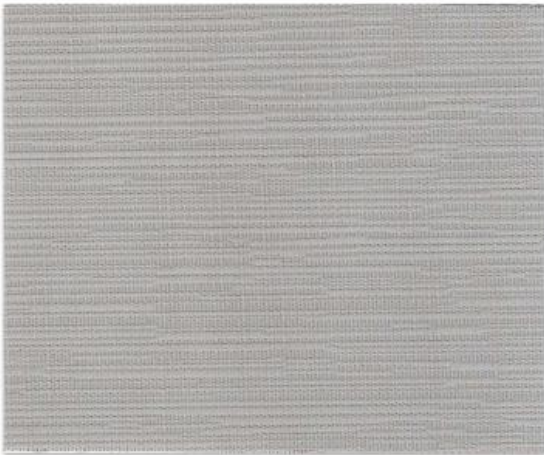
YE1811



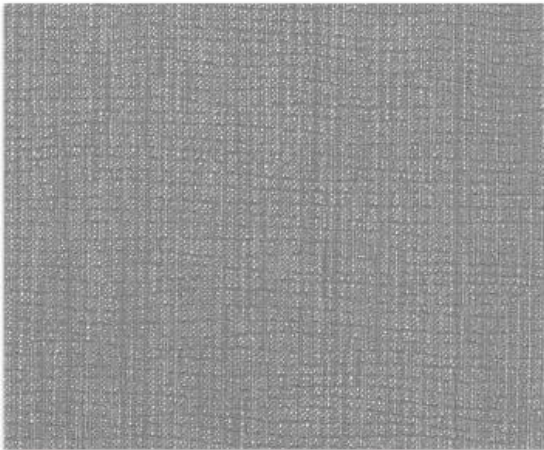
YD2621



YD1602



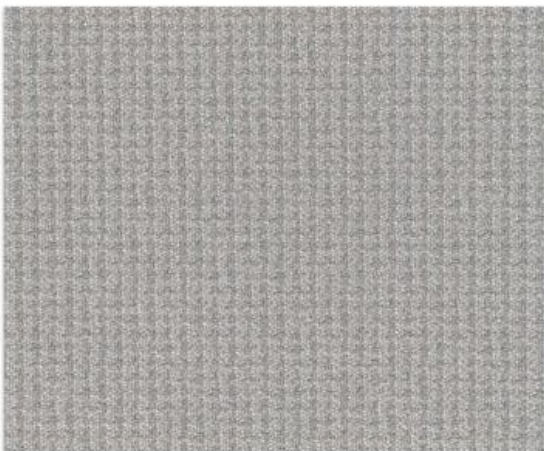
YD2623



YD1607



YD1820



YD1810



YD1819



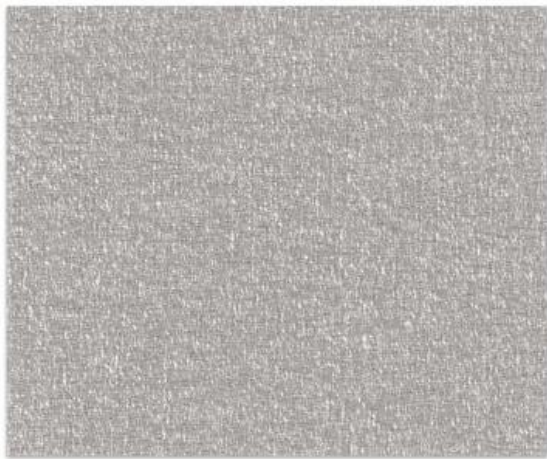
YD2812

MODEL	DIMENSION	COMPOSITION
YD1601	290 cm = 114 inch / 137 cm = 54 inch	Cotton
YD2804	280 cm = 110 inch / 137 cm = 54 inch	Polyester
YE2811	137 cm = 54 inch	50% Gold Yarn, 12% Viscose, 38% Polyester
YD1615	280 cm = 110 inch / 137 cm = 54 inch	Cotton
YD2623	280 cm = 110 inch / 137 cm = 54 inch	100% Polyester
YD2621	280 cm = 110 inch / 137 cm = 54 inch	100% Polyester
YD1607	280 cm = 110 inch / 137 cm = 54 inch	Cotton
YD1602	280 cm = 110 inch / 137 cm = 54 inch	Cotton
YD1810	280 cm = 110 inch / 137 cm = 54 inch	15% Wool, 60% Acrylic, 25% Polyester
YD1820	280 cm = 110 inch / 137 cm = 54 inch	35% Acrylic, 65% Polyester
YD1819	280 cm = 110 inch / 137 cm = 54 inch	15% Wool, 60% Acrylic, 25% Polyester
YD2812	280 cm = 110 inch / 137 cm = 54 inch	Polyester

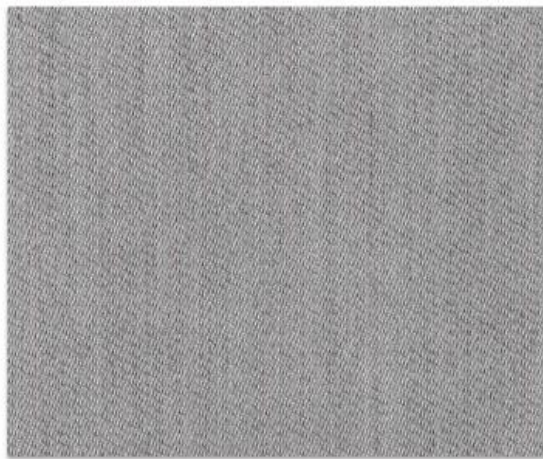
- * A stain repellent finish prevents water based splashes penetrating and staining the material.
- * Periodic vacuuming is recommended to prevent dust from building up on the materials surface.
- * GB 18585-2001 composition safety compliance, the product does not contain PVC, chlorine, plasticizers, heavy metals or harmful dyes in production.
- * Fire rating: ASTM E84 Class A and ES 13501 Class B available.
- * Despite all efforts, we cannot guarantee the accuracy of colors and sheen effects on your screen.
- * The display of color depends on the settings, resolution and on the light of the surroundings.



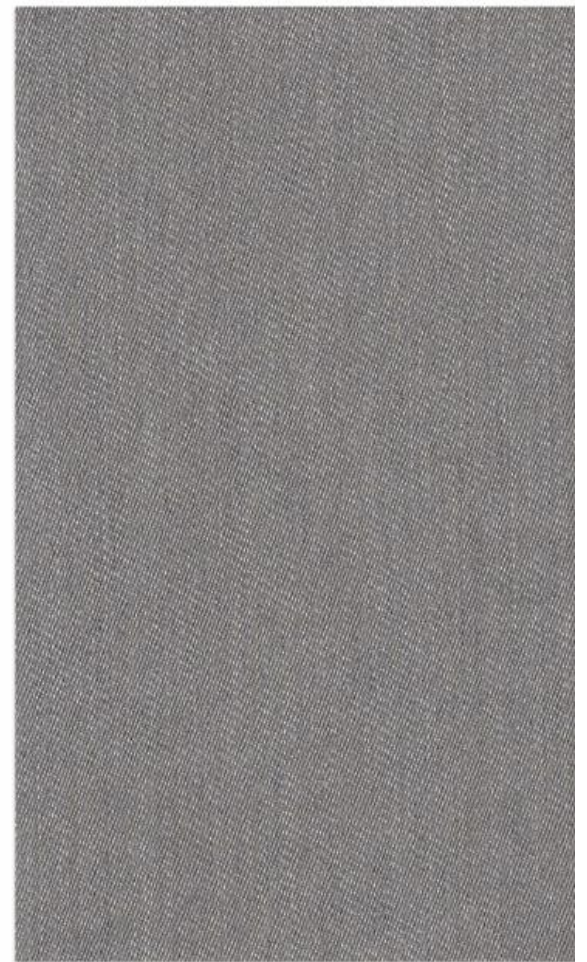
YD2818



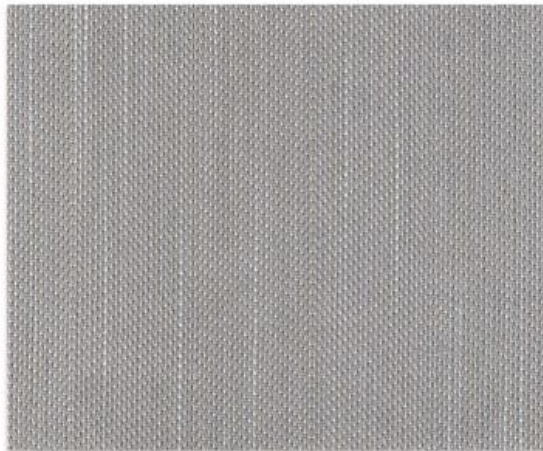
YD1813



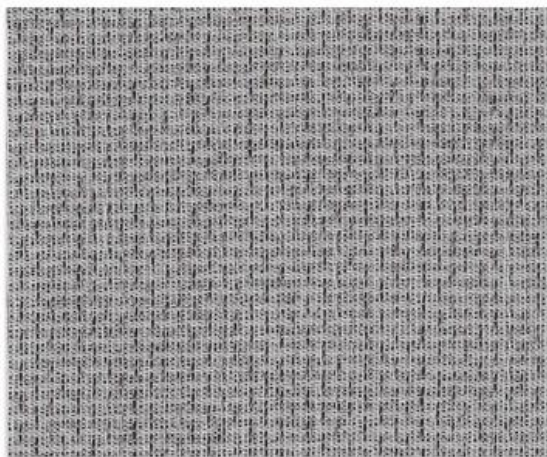
YD1821



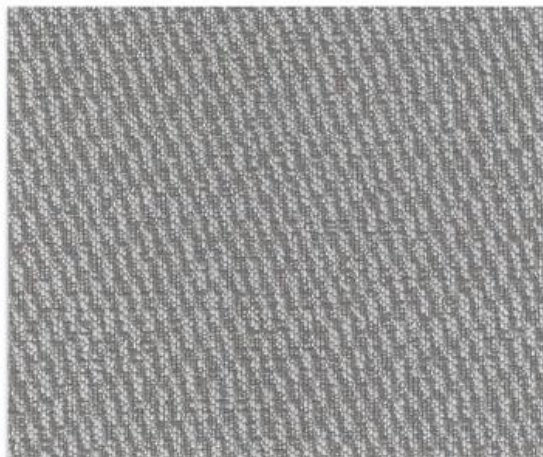
YD1812



YD2625



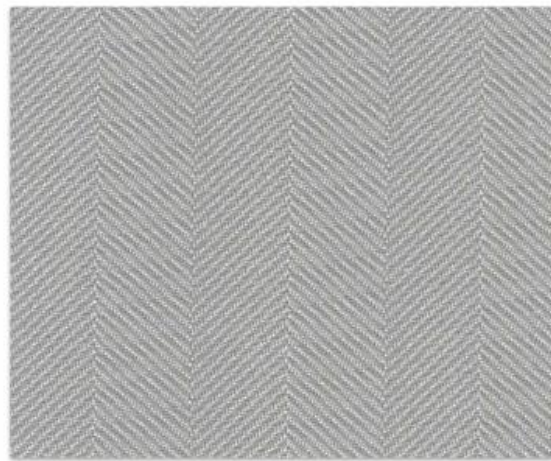
YD1612



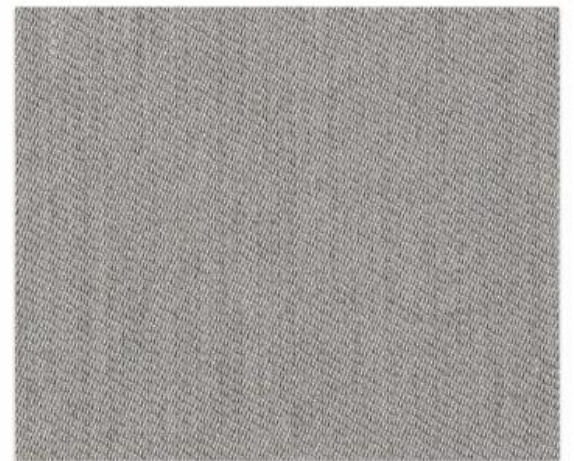
YD1613



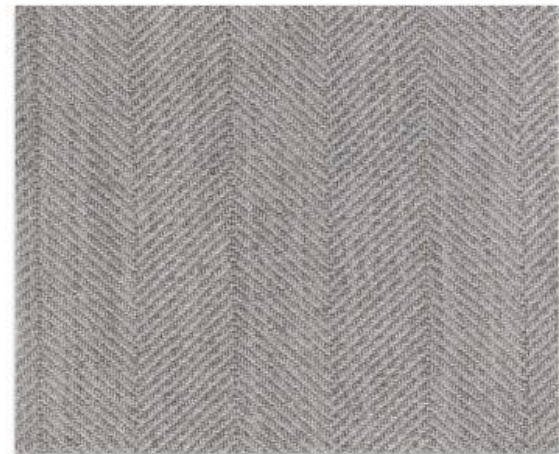
YD2622



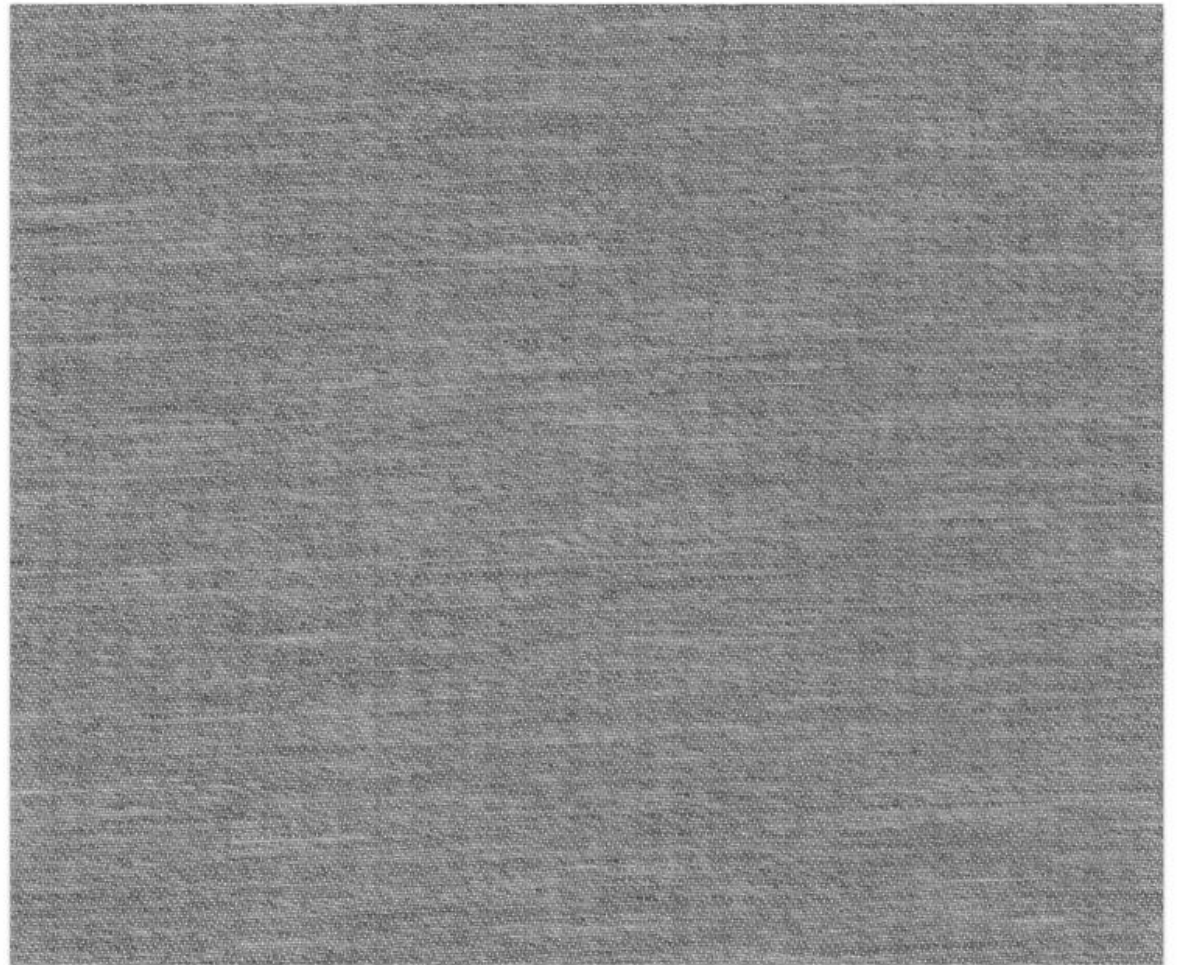
YD1824



YD1809



YD1818



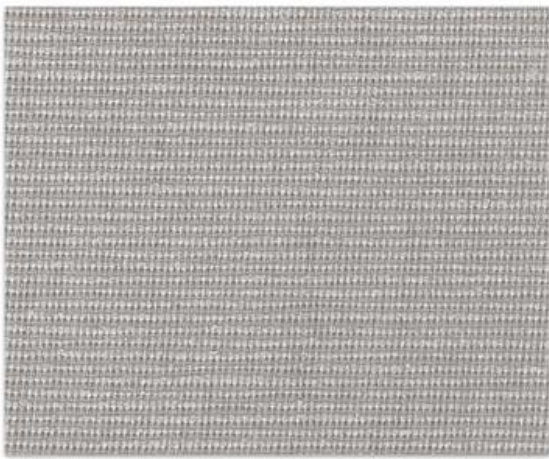
YE1817

MODEL	DIMENSION	COMPOSITION
YD1813	280 cm = 110 inch / 137 cm = 54 inch	15% W, 15% A, 10% V, 10% P, 45% P
YD1821	280 cm = 110 inch / 137 cm = 54 inch	15% Wool, 60% Acrylic, 25% Polyester
YD2625	280 cm = 110 inch / 137 cm = 54 inch	100% Polyester
YD1612	280 cm = 110 inch / 137 cm = 54 inch	Cotton
YD1613	280 cm = 110 inch / 137 cm = 54 inch	Cotton
YD1812	280 cm = 110 inch / 137 cm = 54 inch	40% Viscose, 60% Polyester
YD2622	280 cm = 110 inch / 137 cm = 54 inch	100% Polyester
YD1818	280 cm = 110 inch / 137 cm = 54 inch	15% Wool, 60% Acrylic, 25% Polyester
YD1824	280 cm = 110 inch / 137 cm = 54 inch	15% Wool, 60% Acrylic, 25% Polyester
YD1809	280 cm = 110 inch / 137 cm = 54 inch	40% Viscose, 60% Polyester
YD1817	137 cm = 54 inch	4% N, 10% A, 14% P, 18% W, 54% S,

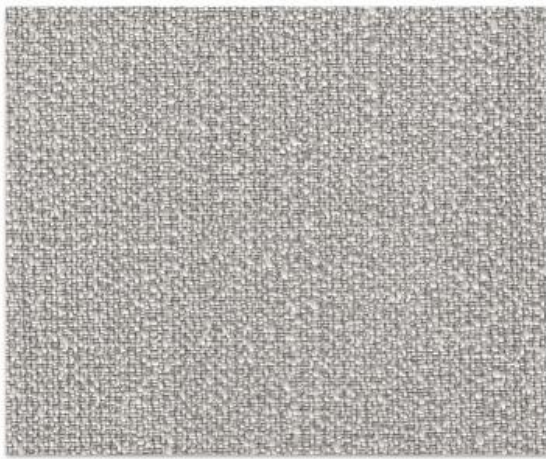
- * A stain repellent finish prevents water based splashes penetrating and staining the material.
- * Periodic vacuuming is recommended to prevent dust from building up on the materials surface.
- * GB 18585-2001 composition safety compliance, the product does not contain PVC, chlorine, plasticizers, heavy metals or harmful dyes in production.
- * Fire rating: ASTM E84 Class A and ES 13501 Class B available.
- * Despite all efforts, we cannot guarantee the accuracy of colors and sheen effects on your screen.
- * The display of color depends on the settings, resolution and on the light of the surroundings.



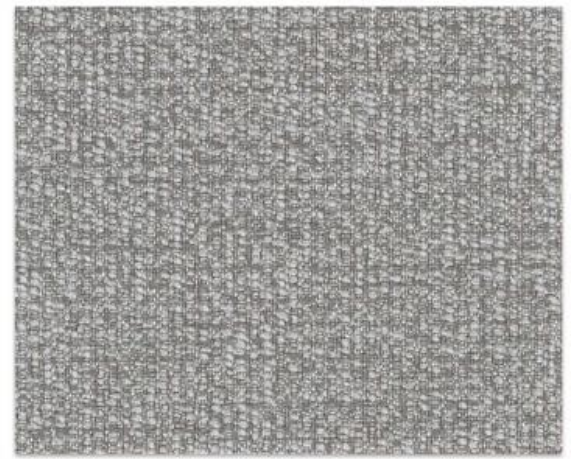
YD1804



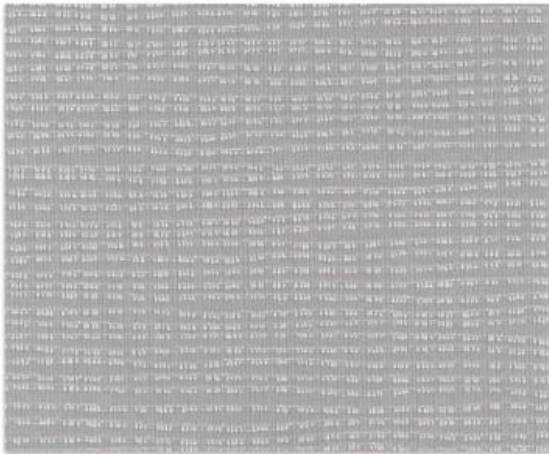
YD2618



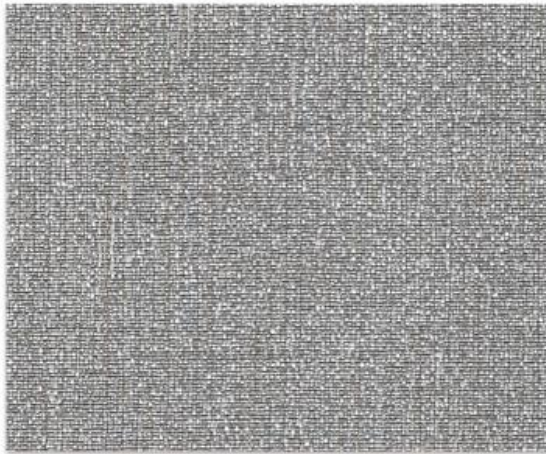
YD2619



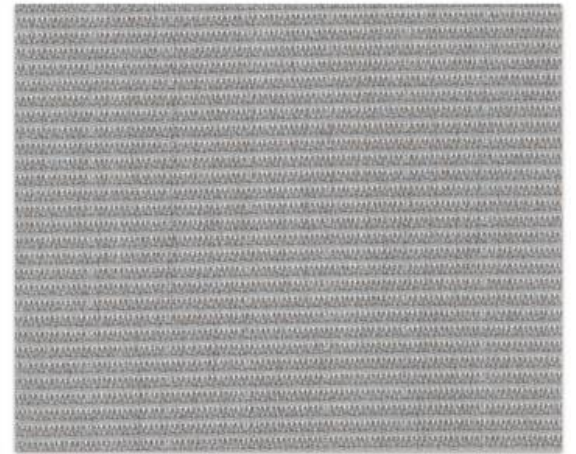
YD1604



YD2811



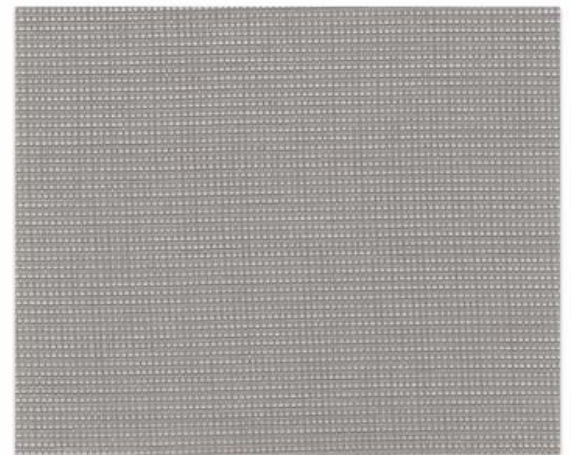
YD2631



YD2624



YD1804



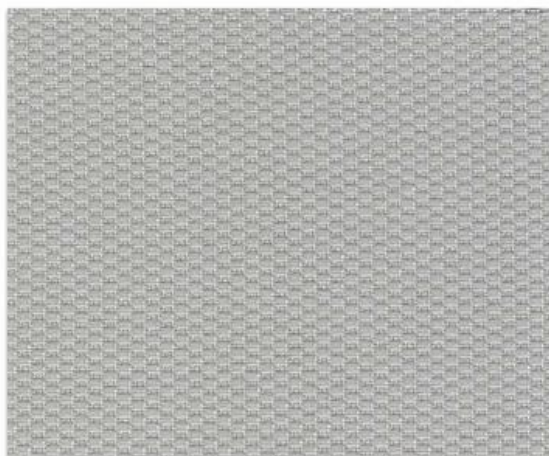
YD4101



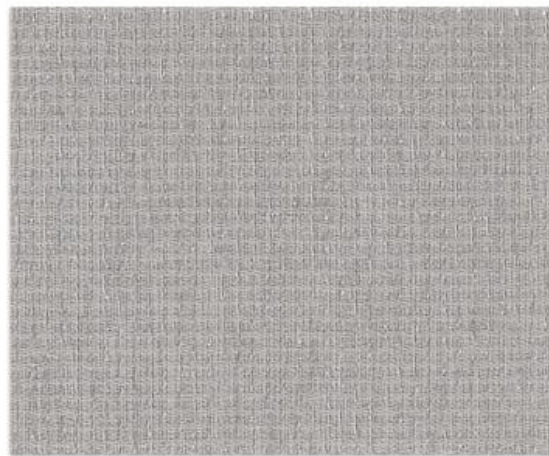
YD2620



YD1307



YD2627



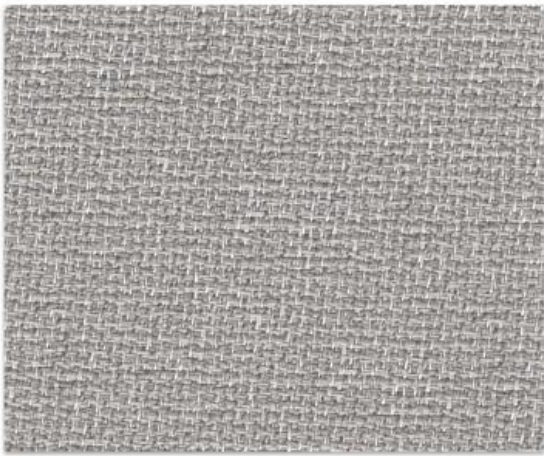
YD1611

MODEL	DIMENSION	COMPOSITION
YD2618	280 cm = 110 inch / 137 cm = 54 inch	100% Polyester
YD2619	280 cm = 110 inch / 137 cm = 54 inch	Polyester
YD2811	280 cm = 110 inch / 137 cm = 54 inch	Polyester
YD2631	280 cm = 110 inch / 137 cm = 54 inch	Polyester
YD1804	280 cm = 110 inch / 137 cm = 54 inch	25% Viscose, 75% Polyester
YD1604	280 cm = 110 inch / 137 cm = 54 inch	Cotton
YD2624	280 cm = 110 inch / 137 cm = 54 inch	100% Polyester
YD2620	280 cm = 110 inch / 137 cm = 54 inch	Polyester
YD4101	280 cm = 110 inch / 137 cm = 54 inch	Polyester, Viscose
YD2627	280 cm = 110 inch / 137 cm = 54 inch	Linen
YD1307	290 cm = 114 inch / 137 cm = 54 inch	Cotton
YD1611	290 cm = 114 inch / 137 cm = 54 inch	Cotton

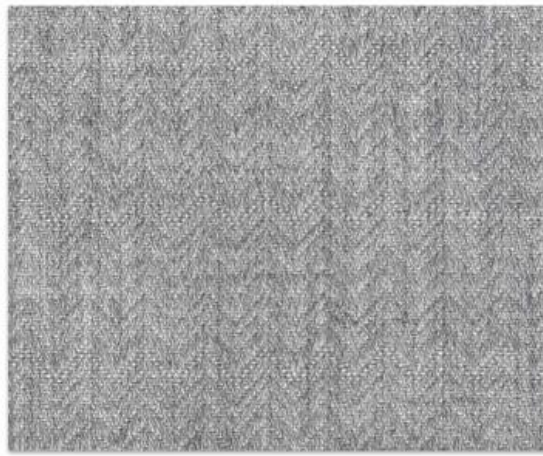
- * A stain repellent finish prevents water based splashes penetrating and staining the material.
- * Periodic vacuuming is recommended to prevent dust from building up on the materials surface.
- * GB 18585-2001 composition safety compliance, the product does not contain PVC, chlorine, plasticizers, heavy metals or harmful dyes in production.
- * Fire rating: ASTM E84 Class A and ES 13501 Class B available.
- * Despite all efforts, we cannot guarantee the accuracy of colors and sheen effects on your screen.
- * The display of color depends on the settings, resolution and on the light of the surroundings.



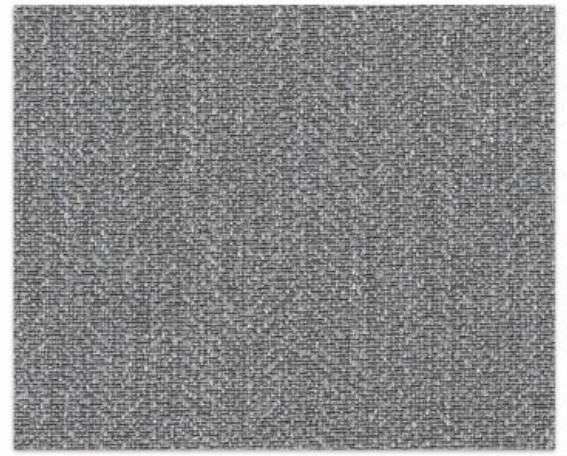
YE1813



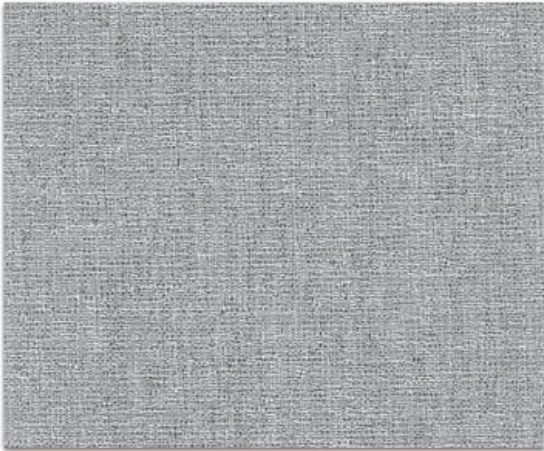
YD1825



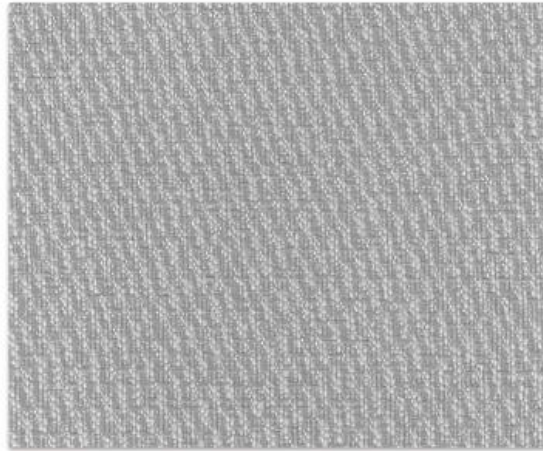
YE1813



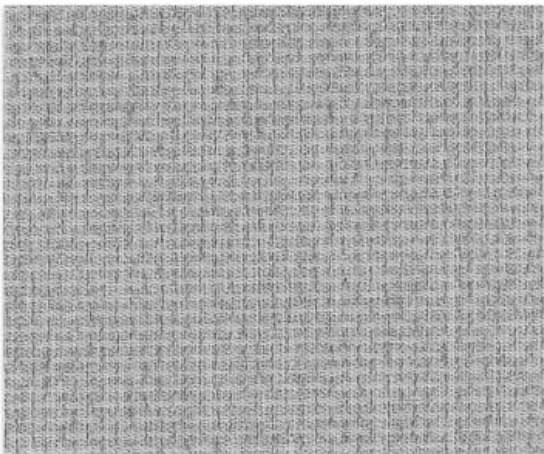
YD2626



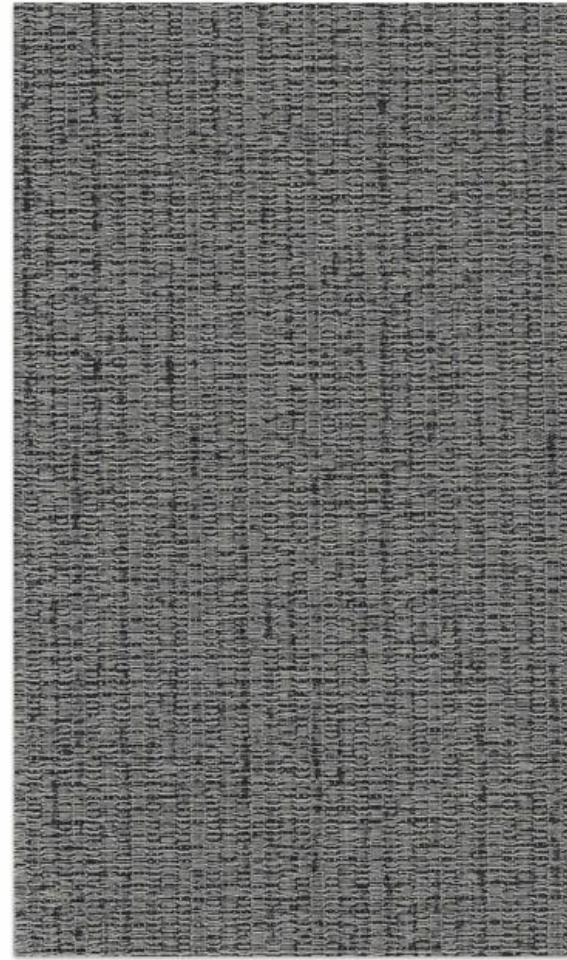
YD2615



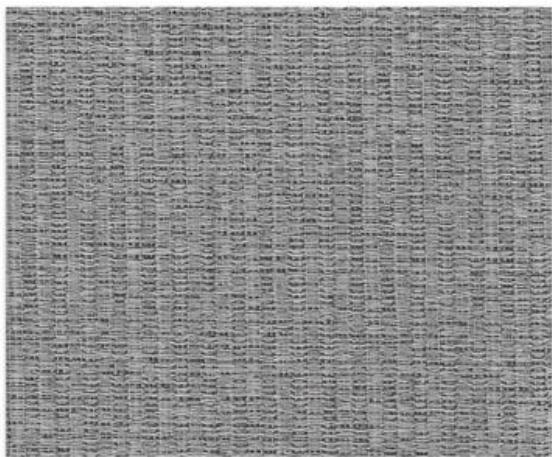
YD1605



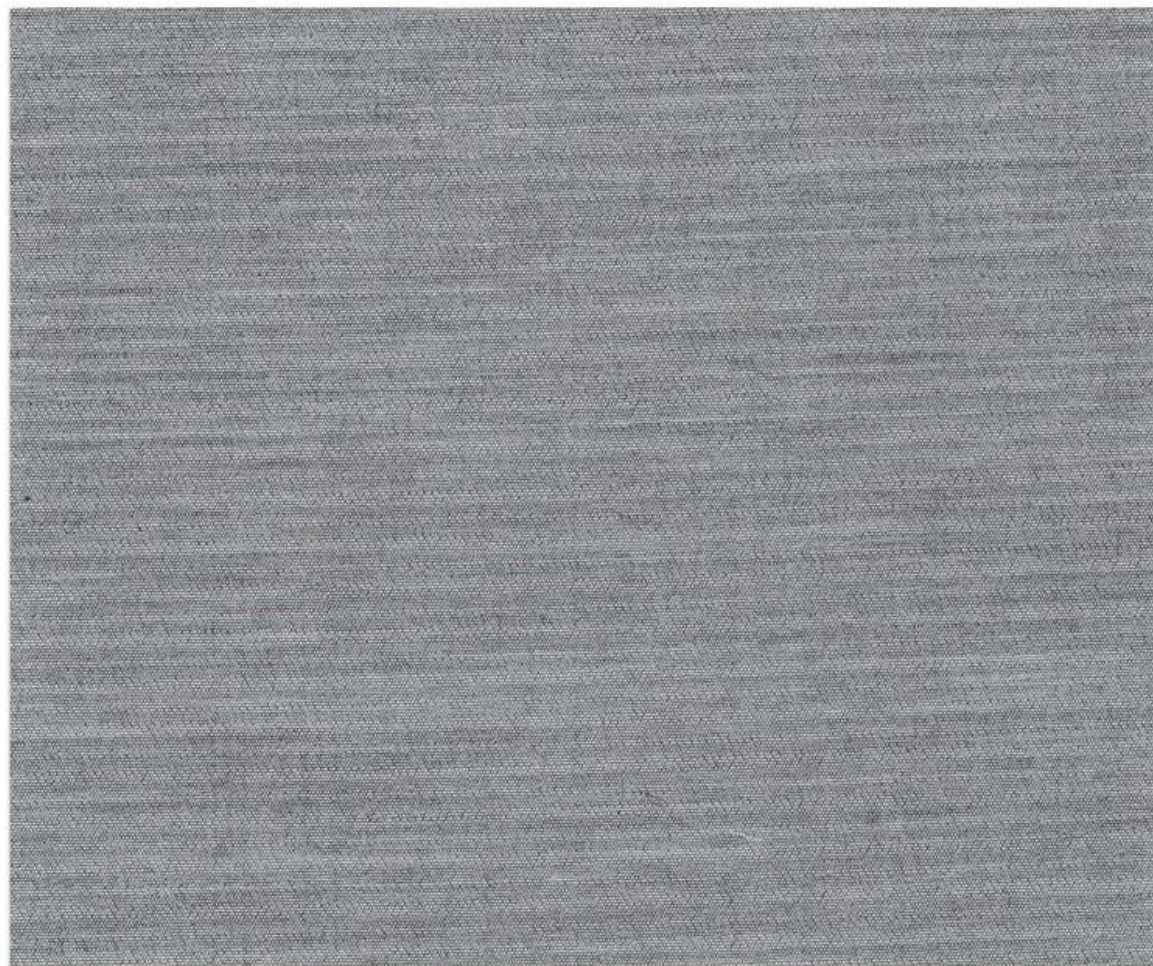
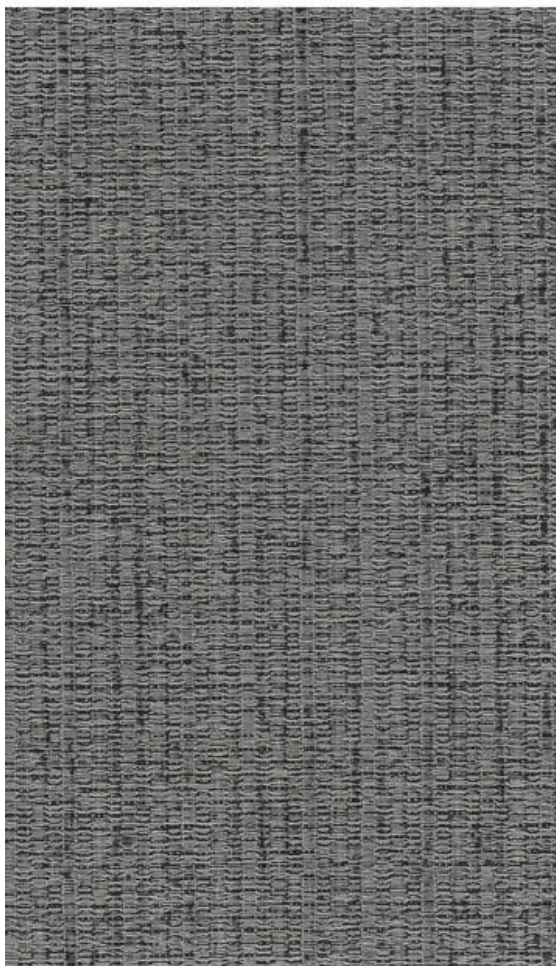
YD1614



YD1816



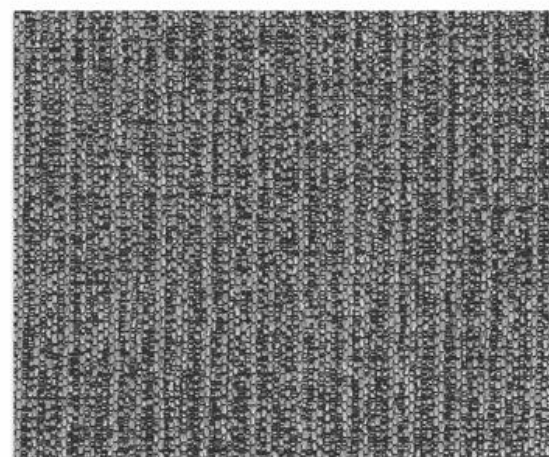
YD1823



YE1807



YE1818



YD1609

MODEL	DIMENSION	COMPOSITION
YD1825	280 cm = 110 inch / 137 cm = 54 inch	5% Linen, 15% Viscose, 80% Polyester
YE1813	137 cm = 54 inch	10% P, 10% N, 10% W, 20% A, 45% V
YD2615	280 cm = 110 inch / 137 cm = 54 inch	100% Polyester
YD1605	290 cm = 114 inch / 137 cm = 54 inch	Cotton
YD1614	290 cm = 114 inch / 137 cm = 54 inch	Cotton
YD2626	280 cm = 110 inch / 137 cm = 54 inch	Polyester
YD1823	280 cm = 110 inch / 137 cm = 54 inch	25% Viscose, 75% Polyester
YD1816	280 cm = 110 inch / 137 cm = 54 inch	25% Viscose, 75% Polyester
YE1807	137 cm = 54 inch	10% P, 10% N, 10% W, 20% A, 45% V
YE1818	137 cm = 54 inch	10% P, 10% N, 10% W, 20% A, 45% V
YD1609	280 cm = 110 inch / 137 cm = 54 inch	Cotton

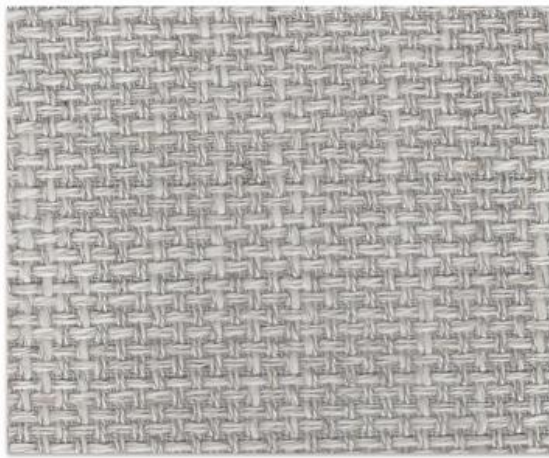
- * A stain repellent finish prevents water based splashes penetrating and staining the material.
- * Periodic vacuuming is recommended to prevent dust from building up on the materials surface.
- * GB 18585-2001 composition safety compliance, the product does not contain PVC, chlorine, plasticizers, heavy metals or harmful dyes in production.
- * Fire rating: ASTM E84 Class A and ES 13501 Class B available.
- * Despite all efforts, we cannot guarantee the accuracy of colors and sheen effects on your screen.
- * The display of color depends on the settings, resolution and on the light of the surroundings.



YD1301



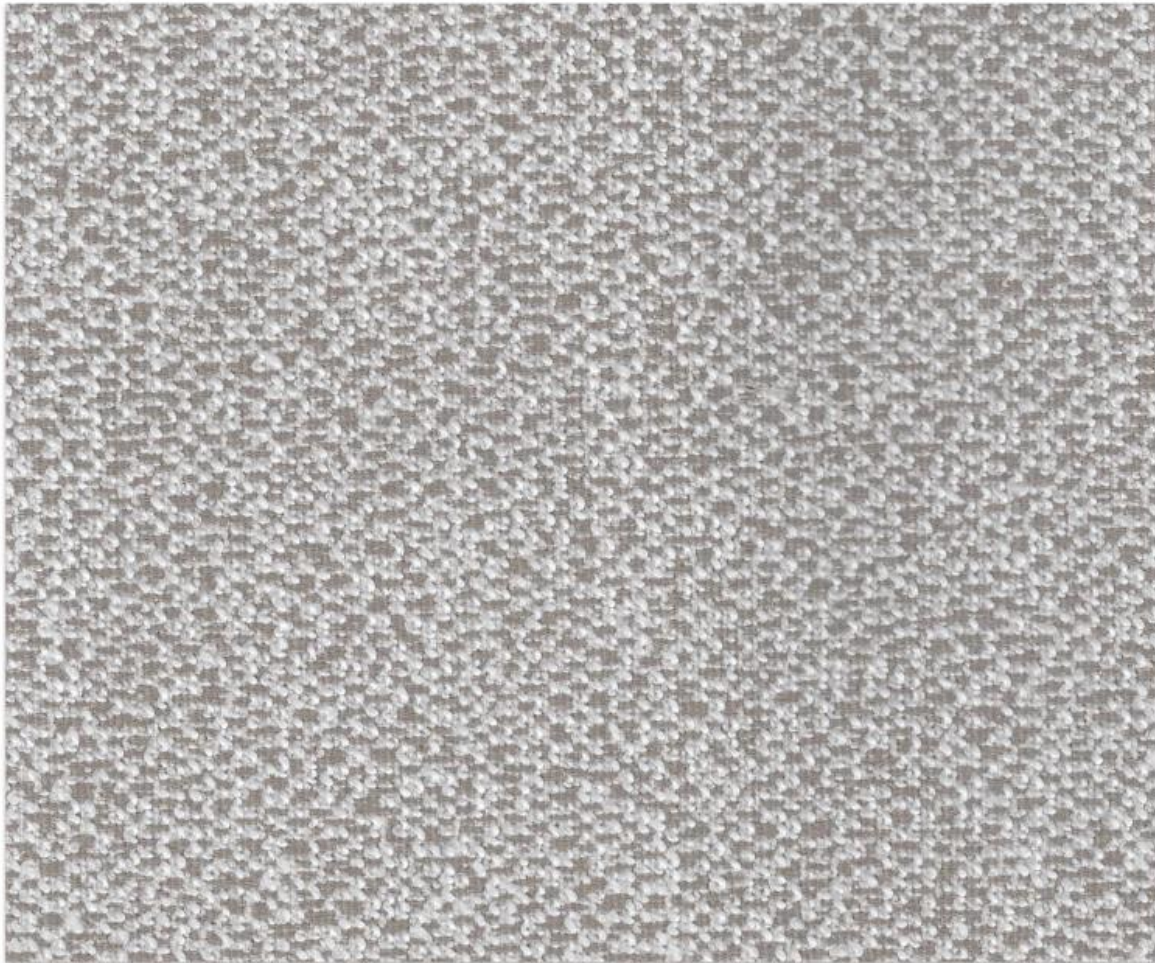
YE1805



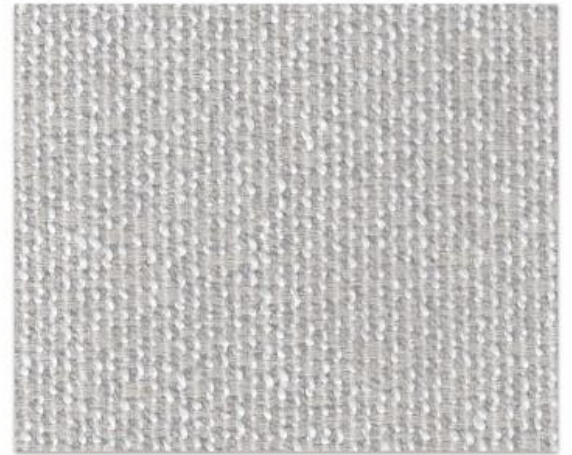
YD1832



YE1804



YD1302



YD1301



YE1801



YD1805



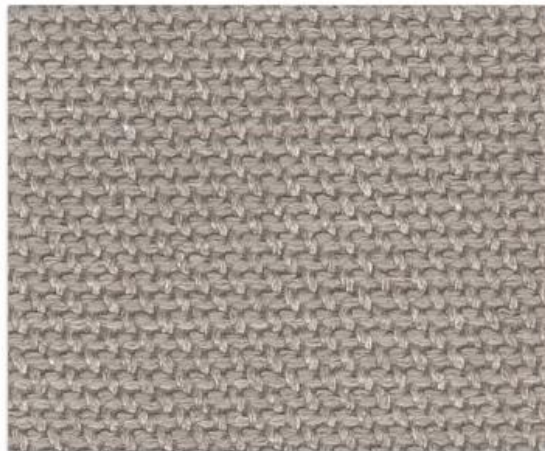
YE1802



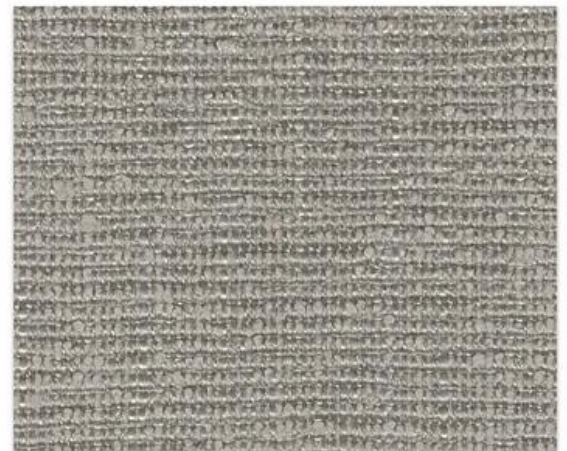
YD1807



YE1815



YE1806



YE1814

MODEL	DIMENSION	COMPOSITION
YD1805	290 cm = 114 inch / 137 cm = 54 inch	8% Linen, 22% Polyester, 29% Cotton, 41% Viscose
YD1832	280 cm = 110 inch / 137 cm = 54 inch	8% Linen, 22% Polyester, 29% Cotton, 41% Viscose
YD1302	290 cm = 114 inch / 137 cm = 54 inch	Cotton
YE1804	137 cm = 54 inch	5% Wool, 35% Acrylic, 60% Polyester
YE1805	137 cm = 54 inch	10% Viscose, 37% Viscose, 53% Polyester
YD1301	290 cm = 114 inch / 137 cm = 54 inch	Cotton
YE1802	137 cm = 54 inch	15% Wool, 60% Acrylic, 25% Polyester
YE1801	137 cm = 54 inch	6% Linen, 10% Acrylic, 18% Viscose, 66% Polyester
YD1807	280 cm = 110 inch / 137 cm = 54 inch	8% Linen, 22% Polyester, 29% Cotton, 41% Viscose
YE1815	137 cm = 54 inch	10% Linen, 37% Viscose, 53% Polyester
YE1806	137 cm = 54 inch	10% Viscose, 25% Acrylic, 65% Polyester
YE1814	137 cm = 54 inch	8% Linen, 10% Acrylic, 18% Viscose, 64% Polyester

* A stain repellent finish prevents water based splashes penetrating and staining the material.

* Periodic vacuuming is recommended to prevent dust from building up on the materials surface.

* GB 18585-2001 composition safety compliance, the product does not contain PVC, chlorine, plasticizers, heavy metals or harmful dyes in production.

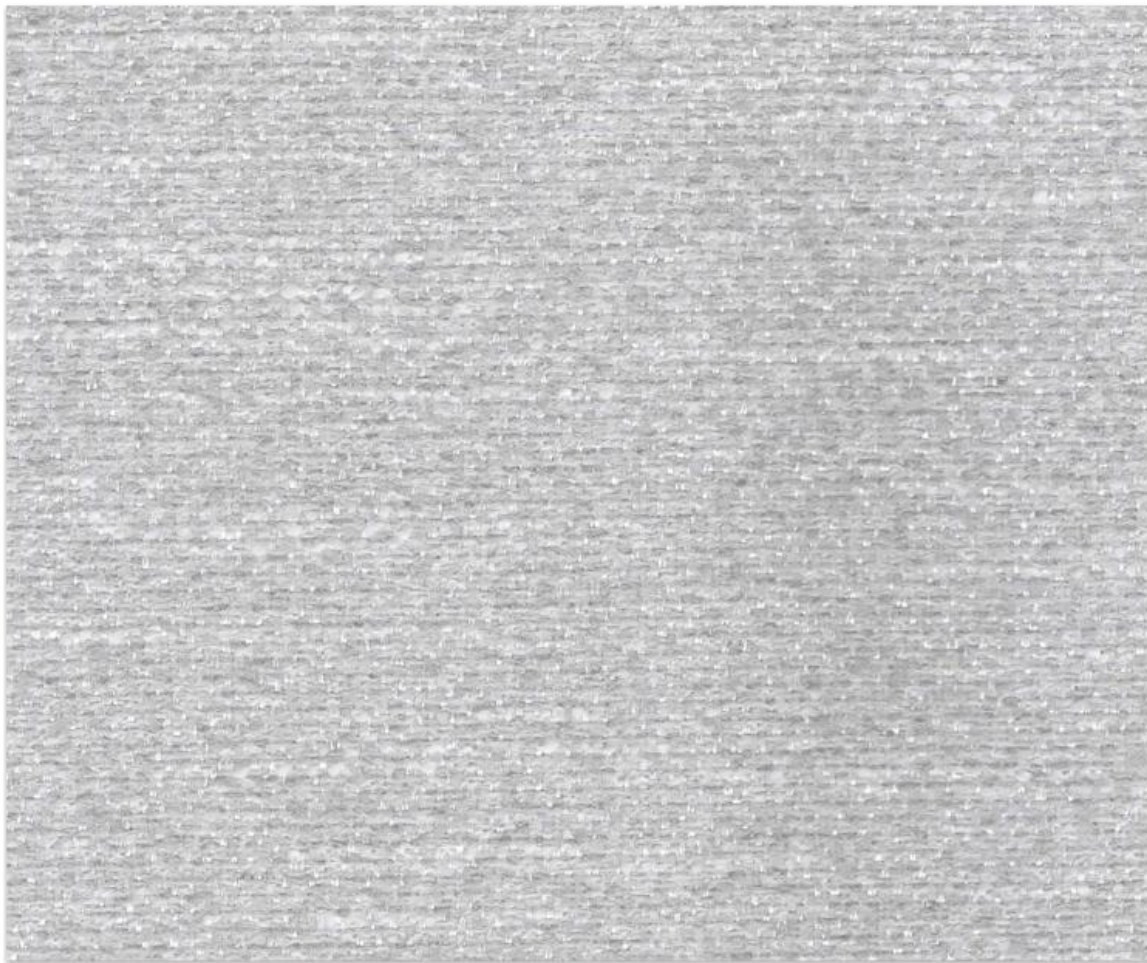
* Fire rating: ASTM E84 Class A and ES 13501 Class B available.

* Despite all efforts, we cannot guarantee the accuracy of colors and sheen effects on your screen.

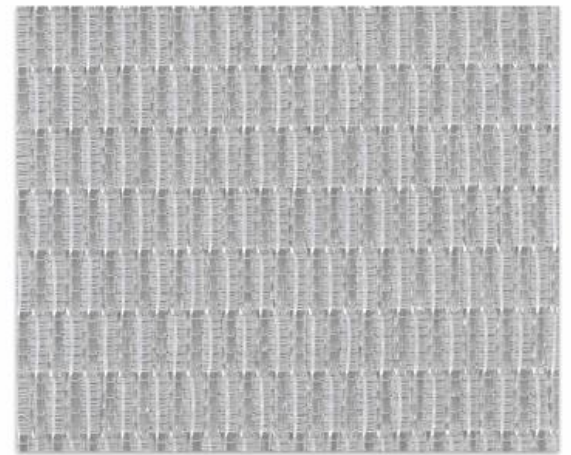
* The display of color depends on the settings, resolution and on the light of the surroundings.



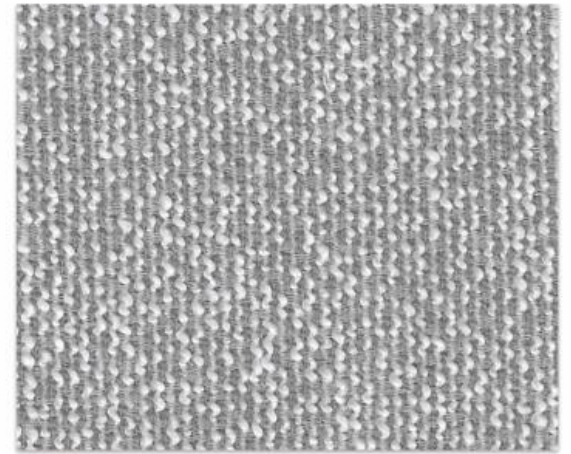
YD1305



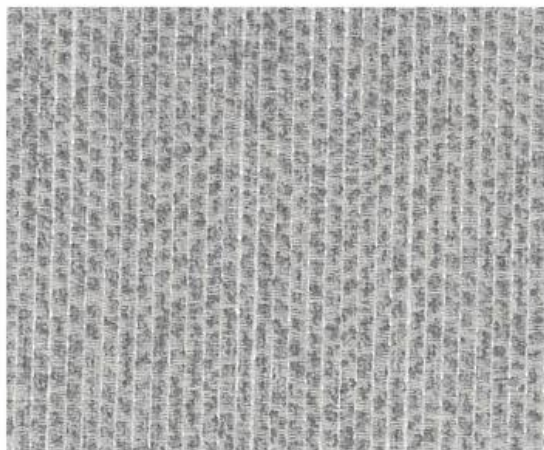
YE1812



YD1608



YD1303



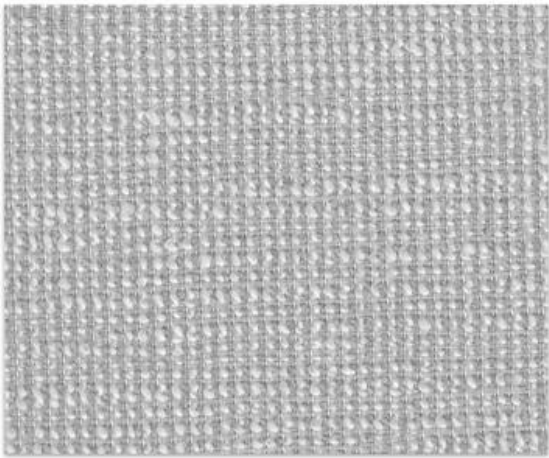
YD1306



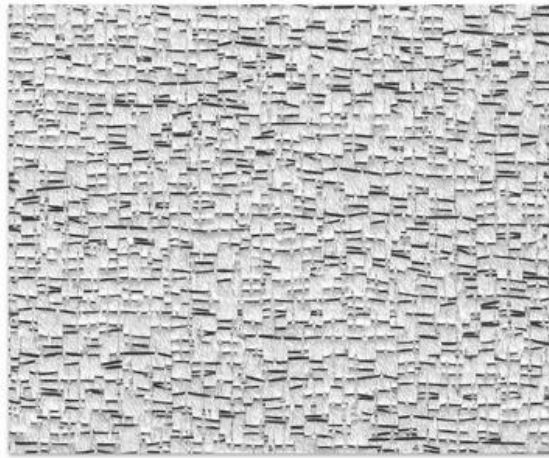
YD1815



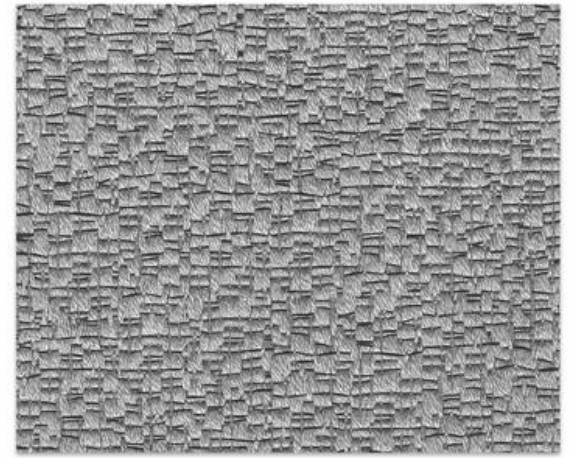
YD2805



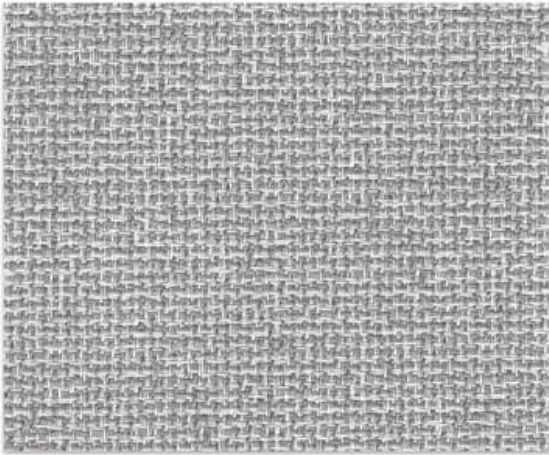
YD1304



YE1808



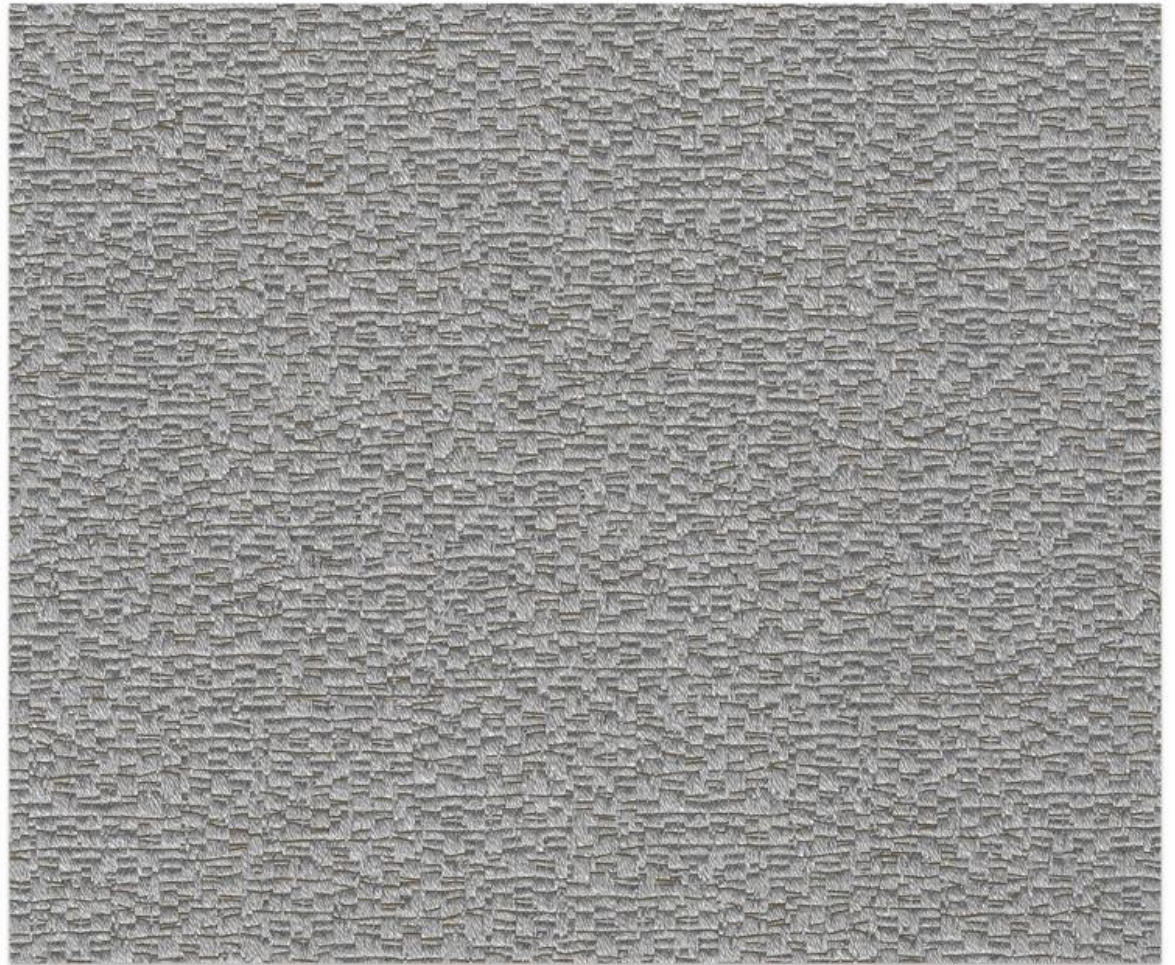
YE1810



YD1822



YD1305



YE1809

MODEL	DIMENSION	COMPOSITION
YE1812	137 cm = 54 inch	5% Wool, 35% Acrylic, 60% Polyester
YD1306	290 cm = 114 inch / 137 cm = 54 inch	Cotton
YD1815	137 cm = 54 inch	5% Linen, 15% Viscose, 80% Polyester
YD1608	280 cm = 110 inch / 137 cm = 54 inch	30% PE, 70% Polyester Fibre
YD1304	280 cm = 110 inch / 137 cm = 54 inch	100% Polyester
YD1303	290 cm = 114 inch / 137 cm = 54 inch	Cotton
YD1822	280 cm = 110 inch / 137 cm = 54 inch	5% Linen, 15% Viscose, 80% Polyester
YD2805	280 cm = 110 inch / 137 cm = 54 inch	100% Polyester
YD1305	290 cm = 114 inch / 137 cm = 54 inch	Cotton
YE1808	137 cm = 54 inch	10% Linen, 37% Viscose, 53% Polyester
YE1810	137 cm = 54 inch	10% Linen, 37% Viscose, 53% Polyester
YE1809	137 cm = 54 inch	10% Linen, 37% Viscose, 53% Polyester

* A stain repellent finish prevents water based splashes penetrating and staining the material.

* Periodic vacuuming is recommended to prevent dust from building up on the materials surface.

* GB 18585-2001 composition safety compliance, the product does not contain PVC, chlorine, plasticizers, heavy metals or harmful dyes in production.

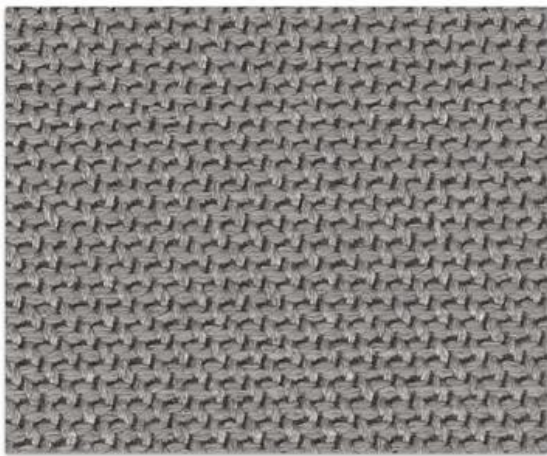
* Fire rating: ASTM E84 Class A and ES 13501 Class B available.

* Despite all efforts, we cannot guarantee the accuracy of colors and sheen effects on your screen.

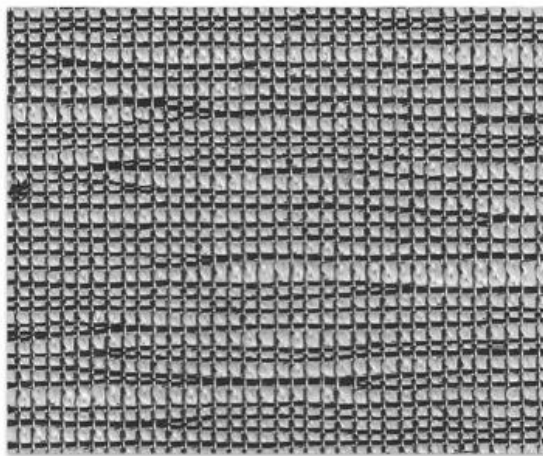
* The display of color depends on the settings, resolution and on the light of the surroundings.



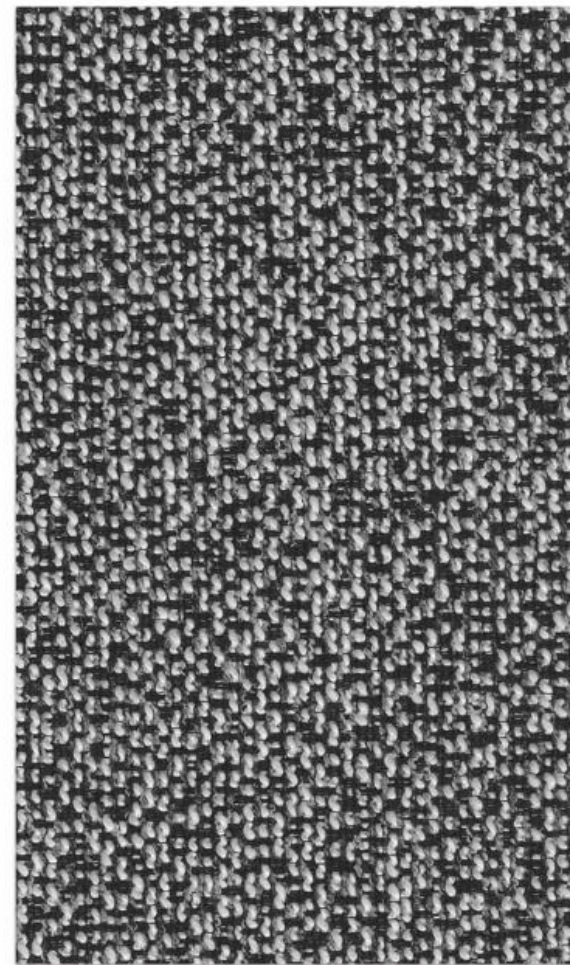
YD1308



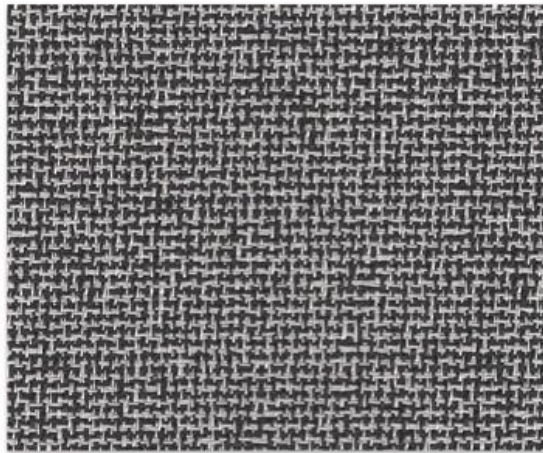
YE1821



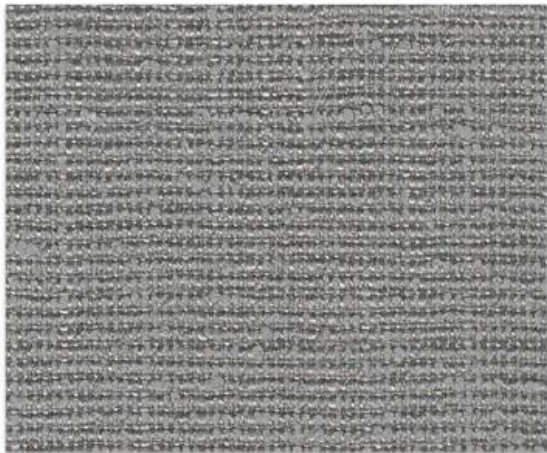
YD1308



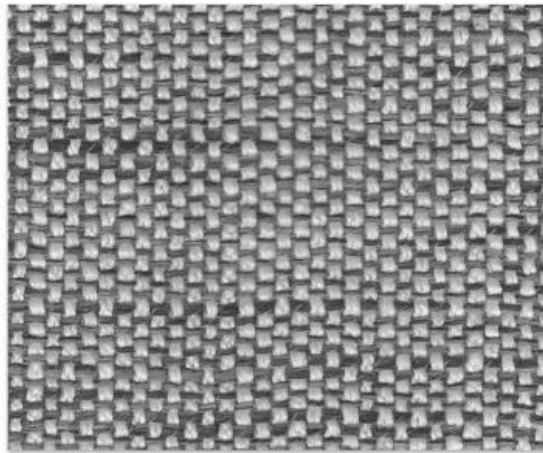
YD1309



YD1828



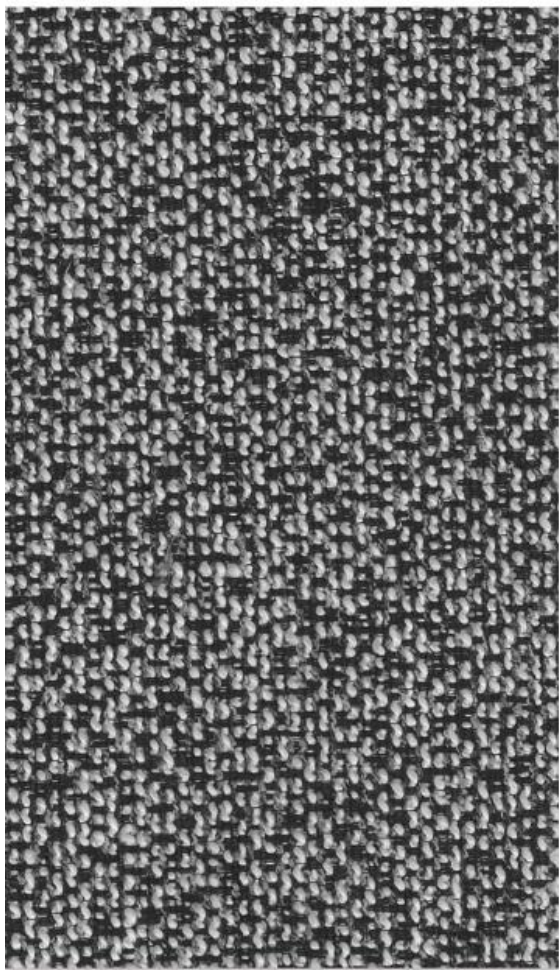
YE1816



YE1820



YD1831



YE1819



YD1829



YD1830



YD1827

MODEL	DIMENSION	COMPOSITION
YE 1821	137 cm = 54 inch	10% Viscose, 25% Acrylic, 65% Polyester
YD1308	290 cm = 114 inch / 137 cm = 54 inch	25% Viscose, 75% Polyester
YD1828	280 cm = 110 inch / 137 cm = 54 inch	5% Linen, 15% Viscose, 80% Polyester
YE1816	137 cm = 54 inch	8% Linen, 10% Acrylic, 18% Viscose, 64% Polyester
YE1820	137 cm = 54 inch	8% Wool, 35% Acrylic, 57% Polyester
YD1309	290 cm = 114 inch / 137 cm = 54 inch	Cotton
YD1831	280 cm = 110 inch / 137 cm = 54 inch	35% Acrylic, 65% Polyester
YE1819	137 cm = 54 inch	8% Linen, 10% Acrylic, 18% Viscose, 64% Polyester
YD1829	280 cm = 110 inch / 137 cm = 54 inch	5% Linen, 15% Viscose, 80% Polyester
YD1830	280 cm = 110 inch / 137 cm = 54 inch	35% Acrylic, 65% Polyester
YD1827	280 cm = 110 inch / 137 cm = 54 inch	8% Linen, 22% Polyester, 29% Cotton, 41% Viscose

* A stain repellent finish prevents water based splashes penetrating and staining the material.

* Periodic vacuuming is recommended to prevent dust from building up on the materials surface.

* GB 18585-2001 composition safety compliance, the product does not contain PVC, chlorine, plasticizers, heavy metals or harmful dyes in production.

* Fire rating: ASTM E84 Class A and ES 13501 Class B available.

* Despite all efforts, we cannot guarantee the accuracy of colors and sheen effects on your screen.

* The display of color depends on the settings, resolution and on the light of the surroundings.



CONTACT US FOR SAMPLES!

For latest update:
www.yorklon.en.alibaba.com
www.yorklonltd.com