

ZHONGSHAN VANGOOD
APPLIANCES MFG CO.,LTD

Vangood

<http://zsvangood.com>

Vangood

VANGOOD
WARM
EVERY FAMILY

Website: <http://zsvangood.com/>
Email: amos@vgappliances.com
Whatsapp: 18064615886

Tel: (0)760-22622765
Mobile: 18064615886

Add: 4th Floor, Building 1, No. 68 Dongfu 2nd Road,
Dongfeng Town, Zhongshan, China



Vangood



VANGOOD
WARM
EVERY FAMILY

CONTENTS /

- 01 COMPANY PROFILE
- 05 FLUE TYPE GAS WATER HEATER
- 08 CAMPING GAS WATER HEATER
- 11 DIGITAL TYPE GAS WATER HEATER
- 15 FORCED EXHAUST GAS WATER HEATER
- 17 OUTDOOR INSTALLATION TYPE GAS WATER HEATER
- 19 GAS COMBI BOILER
- 22 COMMERCIAL STORAGE GAS WATER HEATER
- 24 INSTANT ELECTRIC WATER HEATER
- 29 BUILT-IN GAS STOVE
- 31 TABLE GAS STOVE
- 33 PARTS

COMPANY PROFILE

Vangood Appliances, established in 2001, is a premier OEM and ODM manufacturer specializing in gas water heaters, gas boilers, and home appliance parts. Spanning over 5,000 square meters, our dedicated team of more than 50 employees drives innovation and quality in every product.

Since our inception, we have adhered to the ISO9001 quality management system, guided by our core values of quality, professionalism, integrity, and innovation. We strive for a 100% product pass rate through rigorous quality control and exceptional customer service, fueling our rapid growth. Our products enjoy success in China and are exported to North and South America, Europe, Russia, and Africa. We offer comprehensive one-stop services, covering everything from product design to final assembly, and welcome both OEM and ODM orders.



VANGOOD
WARM EVERY FAMILY

DEVELOPMENT HISTORY

2024

Industrial enterprises above designated size in Dongfeng Town

2023

Through the wall hanging furnace CE certification

2022

It Was Awarded The High-Tech Enterprise Of Guangdong Province

2021

Export Turnover Exceed 5 Million USD

2020

A New Generation Of Outdoor Gas Water Heaters Was Developed

2019

Passed The EU CE Certification

2018

Passed The ISO 9001 Quality Management System Certification

2016

Zhongshan Vangood Company Established

2001

Foshan Vangood Company Established

HONOR CERTIFICATE



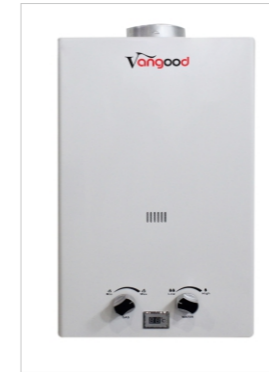
- We strictly follow international and national standards to ensure excellent performance and safety of our products. All gas water heaters and other products have passed authoritative certification and have undergone strict quality inspections.
- Products comply with multiple domestic and international certifications such as ISO and CE to ensure high-standard manufacturing.
- Continuous innovation and breakthroughs, committed to providing energy-saving, environmentally friendly, intelligent and efficient hot water solutions.



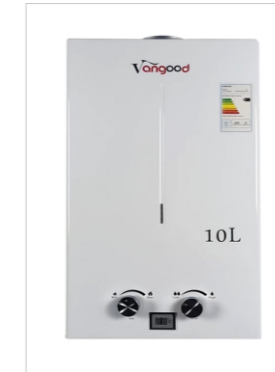
FLUE TYPE GAS WATER HEATER



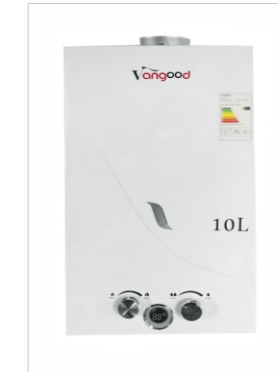
Optional Appearance



Customizable colors
Available: 6L 9L 10L 12L 16L 20L



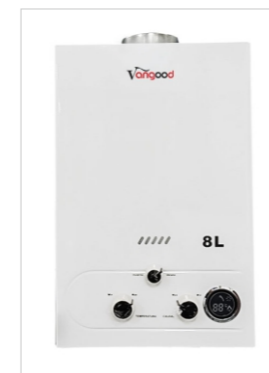
Customizable colors
Available: 6L 9L 10L 12L 16L 20L



Customizable colors
Available: 6L 9L 10L 12L 16L 20L



Customizable colors
Available: 6L 9L 10L 12L 16L 20L



Customizable colors
Available: 6L 7L 8L 10L



Customizable colors
Available: 6L 9L 10L 12L 16L 20L



Customizable colors
Available: 6L 9L 10L 12L 16L 20L



Customizable colors
Available: 10L 12L



Customizable colors
Available: 13L 16L



Customizable colors
Available: 6L 9L 10L 12L 16L 20L



Customizable colors
Available: 10L 12L



Glass
Available: 10L 12L

Features

- Low water pressure startup function.
- Instant water heating, 3-5 seconds supply hot water.
- Double ignition pin, Water control automatic impulse ignition by Water-gas interlock valve.
- Flame out failure protection, Anti-dry combustion.
- Over heating and 20 minutes timer protection device.
- Panel in new and good design, Metal with coating/glass/stainless steel optional.
- Winter-summer switch for gas saving.

Specification

Product	Flue Type Gas Hot Water Heating System					
Installation	Wall Mounted					
Operation	Mounted outside of room					
Exhaust Way	Natural Flue Type					
Capacity	6-20L					
Controller	Knob Control					
Temperature Range	35°C - 65°C					
Panel Material	Stainless Steel / Powder Coated / Glass					
Color	Black / White / Silver					
Water Pressure	0.02-0.8Mpa					
Heat Exchanger	0.8-4.0KG Real Copper					
Ignition Model	pulse ignition 3VDC					
Heat Efficiency	≥85%					
Use Gas Type	LPG / NG					
Rated Gas Pressure	LPG:2800pa		NG:1300pa OR 2000pa			
Rated Voltage	3V DC					
Noise Level	70 dB(A)					
Connection Pipe Spec	Water Inlet: G1/2					
	Water Outlet: G1/2					
	Gas Inlet: G1/2					
Rate Heat Input Power	12KW	16KW	20KW	24KW	32KW	40KW
Max Flow Rate (rise 25°C)	6L/Min	8L/Min	10L/Min	12L/Min	16L/Min	20L/Min
Max Flow Rate (rise 20°C)	8L/Min	10L/Min	13L/Min	15L/Min	20L/Min	25L/Min
Flue Duct Diameter	Φ90 - Φ110MM					

Internal Structure



Optional Heat Exchanger



Optional Linkage Valve



CAMPING GAS WATER HEATER

VANGOOD
WARM EVERY FAMILY

Installation Solution



Description

- Full cold plate coated panel, cold plate coated back cover
- Plastic knob, LCD temperature display
- Gas type: NG 2000Pa
- 75°C Temperature controller.
- Automatic 2x 1.5v battery ignition
- Over water pressure protection
- Anti-dry burning protection
- With release pressure valve
- Flame failure safety device / Flameout protection
- 20 minute inbuilt timer
- Burner (6L: 3 rows) harmonica type, 250mm
- Heat exchanger: Zin coated Real copper

Advantage



Specification

Capacity	6L/Min
Gas Type	LPG / NG
Gas Pressure	LPG(2800Pa)/NG(2000Pa)
Working Water Pressure	0.025-0.8 Mpa
Nominal Heat Input	12KW
N.W/G.W	4.5/5.5 kg
Other Optional Size	5.5L / 6L
Connection Size	G1/2" (Gas/Inlet/Outlet)
Efficiency	Over 84%
Protection	1)Over water pressure protection 2)Anti-dry burning protection 3)Over heat protection 4)Flame failure protection

CUSTOMIZABLE IN MULTIPLE COMBINATIONS

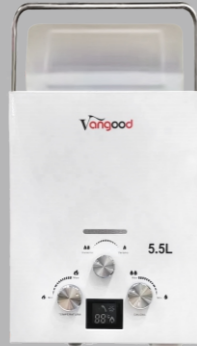
Optional Appearance



JSD-P01
Available:5.5L 6L
Customizable Colors



JSD-P02
Available:5.5L 6L
Customizable Colors



JSD-P03
Available:5.5L 6L
Customizable Colors



JSD-P04
Available:5.5L 6L
Customizable Colors



JSD-P05
Available:5.5L 6L
Customizable Colors



JSD-P06
Available:5.5L 6L
Customizable Colors



JSD-P07
Available:5.5L 6L
Customizable Colors



JSD-P08
Available:5.5L 6L
Customizable Colors



JSD-P09
Available:5.5L 6L
Customizable Colors



JSD-P010
Available:5.5L 6L
Customizable Colors



JSD-P011
Available:5.5L 6L
Customizable Colors

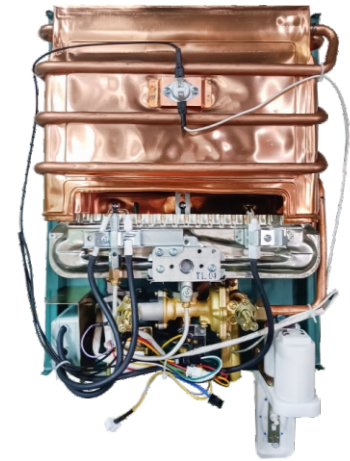


JSD-P012
Available:3.5L 6L
Customizable Colors

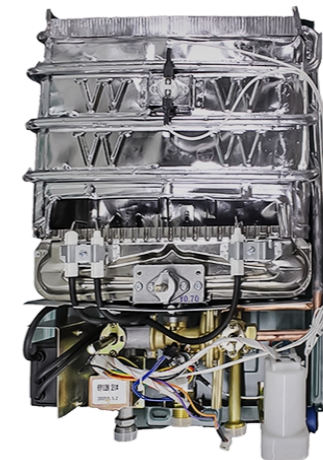
Product Internal Structure



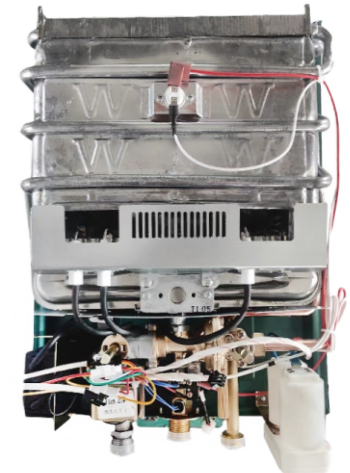
VG-01



VG-02



VG-03



VG-04

Optional Pressure Reducing Valve



Australian Model



American Model



German Model

DIGITAL TYPE GAS WATER HEATER

Description

- Cold plate coated panel, cold plate coated back cover
- Digital display to show the working state.
- Gas type: LPG
- Automatic electric ignition (220V, 50HZ)
- 75°C Temperature controller.
- Over water pressure protection
- Anti-dry burning protection
- With release pressure valve
- Flame failure safety device / Flameout protection
- 20 minute inbuilt timer
- 60/100 flue pipe

Specification

Product	Digital Domestic Gas Hot Water Heating System	Ignition Model	Automatic electrical pulse ignition 220V AC
Installation	Wall Mounted	Heat Efficiency	≥85%
Operation	Mounted in kitchen, bathroom, etc.	Use Gas Type	LPG / NG
Exhaust Way	Force Exhaust Type	Rated Gas Pressure	LPG: 2800pa NG: 1300pa OR 2000pa
Capacity	10-20L	Rated Voltage	220V/50HZ & 110V/60HZ
Controller	Digital Control	Electric Power	45W
Temperature Range	35°C - 65°C	Electrical Protection	IPX4
Panel Material	Stainless Steel / Powder Coated / Glass	Noise Level	70 dB(A)
Color	Black / White / Silver	Connection Pipe Spec	Water Inlet: G1/2 Water Outlet: G1/2 Gas Inlet: G1/2
Water Pressure	0.02-0.8Mpa		
Heat Exchanger	1.5-3.0KG Real Copper		

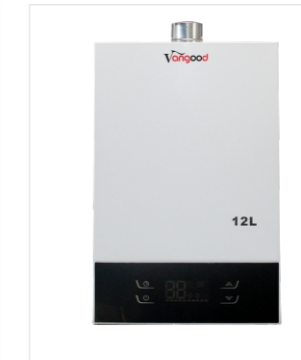
Optional Appearance



CE GAR
VG24GBX-01(C12)
VG23QBW-01(B12)
Available: 10L 12L



CE GAR
VG24GBX-02(C12)
VG23QBW-02(B12)
Available: 10L 12L



CE GAR
VG24GBX-03(C12)
VG23QBW-03(B12)
Available: 10L 12L



CE GAR
VG24GBX-04(C12)
VG23QBW-04(B12)
Available: 10L 12L



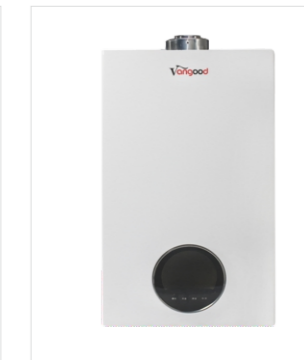
CE GAR
VG24GBX-05(C12)
VG23QBW-05(B12)
Available: 10L 12L



CE GAR
VG24GBX-06(C12)
VG23QBW-06(B12)
Available: 10L 12L



CE GAR
VG24GBX-07(C12)
VG23QBW-07(B12)
Available: 10L 12L



CE GAR
VG24GBX-08(C12)
VG23QBW-08(B12)
Available: 10L 12L



CE GAR
VG24GBX-08G(C12)
VG23QBW-08G(B12)
Available: 10L 12L



CE GAR
VG24GBX-08H(C12)
VG23QBW-08H(B12)
Available: 10L 12L



CE GAR
VG24GBX-09(C12)
VG23QBW-09(B12)
Available: 10L 12L



CE GAR
VG24GBX-10(C12)
VG23QBW-10(B12)
Available: 10L 12L

Optional Appearance



CE GAR
VG24GBX-11(C12)
VG23QBW-11(B12)
Available:10L 12L



CE GAR
VG24GBX-12(C12)
VG23QBW-12(B12)
Available:10L 12L



CE GAR
VG24GBX-13(C12)
VG23QBW13(B12)
Available:10L 12L



CE GAR
VG24GBX-14(C12)
VG23QBW-14(B12)
Available:10L 12L



CE GAR
VG24GBX-15(C12)
VG23QBW-15(B12)
Available:10L 12L



CE GAR
VG24GBX-16(C12)
VG23QBW-16(B12)
Available:10L 12L



VGH-G13
Digital Indoor Type
Remote Controller
Sloar Boost
Available:10L~22L



VGH-G14
Digital Indoor Type
Remote Controller
Sloar Boost
Available:10L~22L



VGH-G19
Digital Indoor Type
Remote Controller
Sloar Boost
Available:10L~22L



VGH-G20
Digital Indoor Type
Remote Controller
Sloar Boost
Available:10L~22L



VGH-G21
Digital Indoor Type
Remote Controller
Sloar Boost
Available:10L~22L



VGH-G22
Digital Indoor Type
Built-In Condenser
Available:10L~22L

Optional Appearance-Single Smoke Tube



VG-01
Available:10L~16L



VG-02
Available:10L~16L



VG-03
Available:10L~16L



VG-04
Available:10L~16L



VG-05
Available:10L~16L



VG-06
Available:10L~16L



VG-07
Available:10L~16L



VG-08
Available:10L~16L

Internal Structure



DC Fan



Silent Room Water Tank



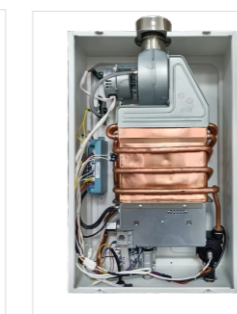
Condensation



CE

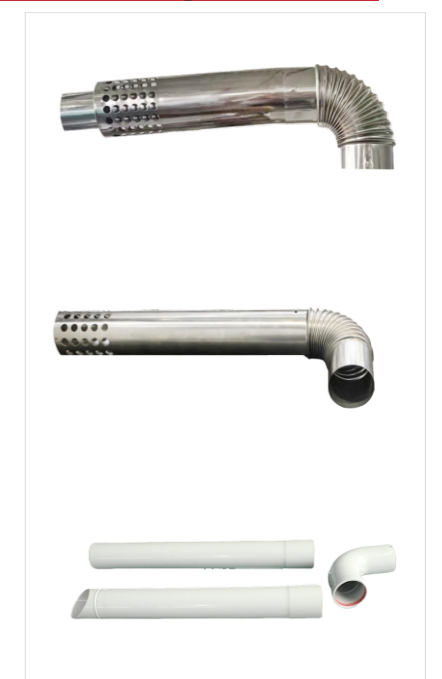


Conventional



Supercharged Water Pump

Smoke Pipe



FORCED EXHAUST GAS WATER HEATER



Description

- Forced Exhaust Design
- 24L Large Capacity
- Intelligent Constant Temperature
- High Efficiency & Energy Saving
- Easy Operation
- Modern Appearance
- Low Water Pressure Startup
- Multiple Safety Protections

Specification

Product Type	Forced Exhaust Gas Water Heater
Model	24L
Capacity	24 Liters
Gas Type	LPG (Liquefied Petroleum Gas) / NG (Natural Gas)
Rated Heat Load	42-48kW
Thermal Efficiency	≥88%
Ignition Method	Pulse Ignition
Exhaust Method	Forced Exhaust (with fan)
Working Water Pressure	0.02MPa - 0.8MPa
Panel Material	Painted Metal / Stainless Steel (optional)
Display	LED Digital Temperature Display
Safety Protection	Flameout Protection, Overheat Protection, Anti-dry Burn, Water Pressure Protection

Optional Appearance



JSJ-24B1
Available:24L



JSJ-24B2
Available:24L



JSJ-24B3
Available:24L



JSJ-24B4
Available:24L

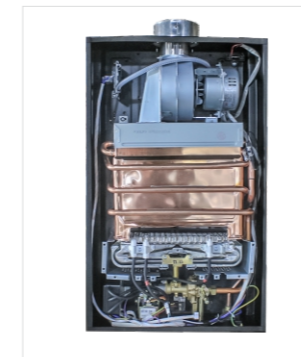


JSJ-24B5
Available:24L



JSJ-24B6
Available:24L

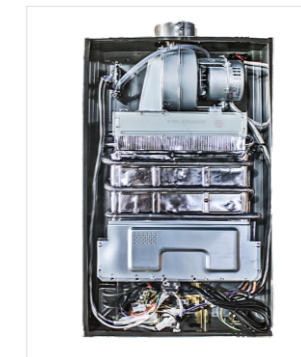
Internal Structure



01



02

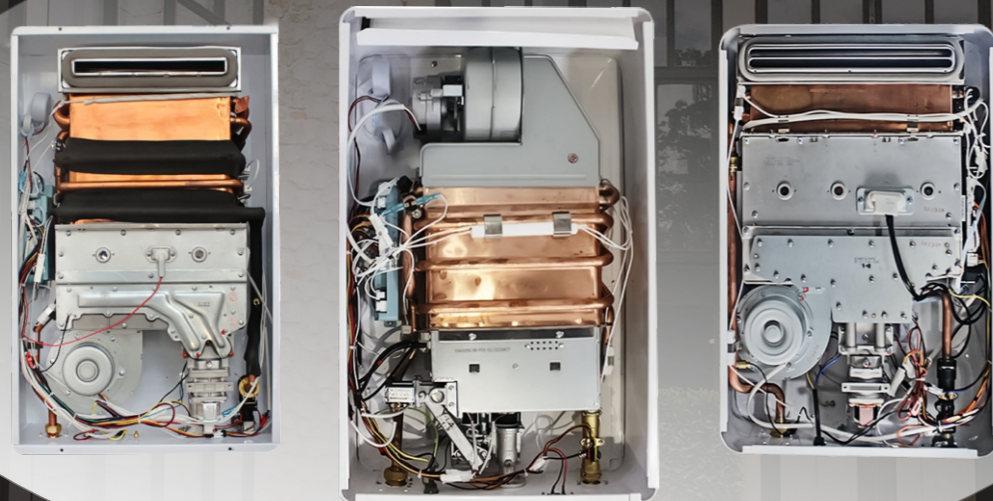


03



04

OUTDOOR INSTALLATION TYPE GAS WATER HEATER



Features

- Outdoor strong drum machine, sunproof, rainproof, windproof, antifreeze, antirust
- Sealed combustion chamber, lower blower, positive pressure combustion
- CPU intelligent control, motherboard circuit board moisture-proof treatment, dual temperature sensors, gas proportional valve
- Environmental protection and high efficiency, phosphorus deoxidized copper heat exchanger
- Three-stage gas control adjustment, water and gas double adjustment
- Low pressure combustion, low water pressure start
- Wide range of hot water production capacity adjustment
- It can be matched with multiple wire controllers for operation

Specification

Model NO.	JSW16	JSW18	JSW20	JSW24	JSW32
Liters	16L	18L	20L	24L	32L
Rated Heat Load	32KW	36KW	40KW	48KW	64KW
Rated voltage				AC220V	
Minimum starting water pressure				10kpa	
Applicable water pressure				0.1-1Mpa	
Rated electric power				47.5W	
Antifreeze heating electric power				90W	
Flame extinguishing safety device				Flame detection rod type	
Empty boiler safety device				Water sensor	
Overfire safety device				Bimetallic (shutdown at 90°C)	
Residue safety current				current fuse (5A)	
Overpressure prevention device				Pressure safety valve (1.5Mpa) Water pressure resistance (1.9Mpa)	
Overheat prevention device				Thermal fuse (fuse at 184°C)	
Boiling prevention device				Water temperature sensor (90°C)	

Optional Appearance



Remote Controller,Solar Boost
Available:16L 18L 20L 24L



Remote Controller,Solar Boost
Available:16L 18L 20L 24L



Remote Controller,Solar Boost
Available:16L 18L 20L 24L



Remote Controller,Solar Boost
Available:16L 18L 20L 24L



Remote Controller,Solar Boost
Available:16L 18L 20L 24L



Remote Controller,Solar Boost
Available:16L 18L 20L 24L



Remote Controller,Solar Boost
Available:16L 18L 20L 24L



Panel controller

GAS COMBI BOILER

Description

- Heat exchanger for hot water: Plate heat exchanger
- Type of burning chamber: Balanced
- LCD display
- Anti-freezing function
- Flame-out protection
- Overheat protection
- Self-diagnosis
- Digital control
- Suitable for many kinds of gas source
- Digital constant temperature
- Energy efficiency 90.2%
- Safe and environmental protection
- Closed system
- Multiple control mode system

Specification

	Band	SB1P 20-G	SB1P 24-G	SB1P 26-G	SB1P 28-G	SB1P 32-G	SB1P 36-G
Energy efficiency	%	91	91	91	91	91	91
Heat input.Max.	KW	20	24	26	28	32	36
Heat input.Min.	KW	6.8	8.2	8.1	9.5	11.4	11.2
Heat output.Max. [C.H.]	KW	17.8	21.4	23.2	24.9	28.5	32
Heat output.Max. [D.H.W.]	KW	17.8	21.4	23.2	24.9	28.5	32
Central heating tepm.Max.	°C	85	85	85	85	85	85
Central heating tepm.Min.	°C	40	40	40	40	40	40
D.H.W tepm.Max.	°C	65	65	65	65	65	65
D.H.W tepm.Min.	°C	36	36	36	36	36	36
D.H.W Flow Rate (Δ=30°C)	L/min	8.2	9.6	10.8	11.2	13.3	15
D.H.W Flow Rate.Min	L/min	3	3	3	3	3	3
Domestic hot water pressure.Max.	bar	10	10	10	10	10	10
Domestic hot water pressure.Min.	bar	0.2	0.2	0.2	0.2	0.2	0.2
Built-in expansion vessel capacity	L	6	6	6	6	8	8
Built-in expansion vessel pre-charged pressure	bar	1	1	1	1	1	1
Heating pressure.Max	bar	3	3	3	3	3	3
burner	row	9	11	13	13	15	18
Pump lift	m	5	5	6	6	6	7
Heating Area	m ²	100-120m ²	120-140m ²	140-160m ²	160-180m ²	180-220m ²	220-250m ²

Optional Appearance



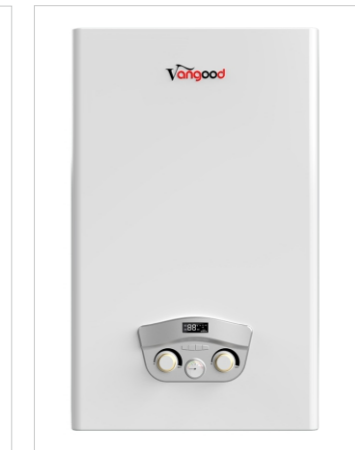
VC-CB01
Floor Heating & Bathroom
Available:18/20/24/28/32kW



VC-CB02
Floor Heating & Bathroom
Available:18/20/24/28/32kW



VC-CB03
Floor Heating & Bathroom
Available:18/20/24/28/32kW



VC-CB04
Floor Heating & Bathroom
Available:18/20/24/28/32kW



VC-CB05
Floor Heating & Bathroom
Available:18/20/24/28/32kW



VC-CB06
Floor Heating & Bathroom
Available:18/20/24/28/32kW



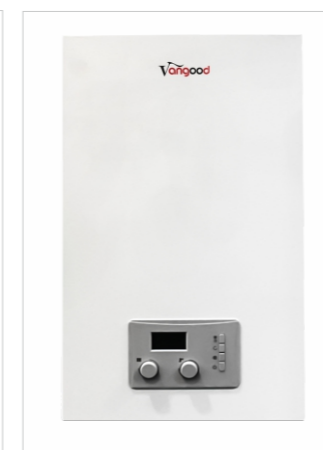
VC-CB07
Floor Heating & Bathroom
Available:18/20/24/28/32kW



VC-CB08
Floor Heating & Bathroom
Available:18/20/24/28/32kW



VC-CB09
Floor Heating & Bathroom
Available:18/20/24/28/32kW



VC-CB10
Floor Heating & Bathroom
Available:18/20/24/28/32kW



VC-CB11
Floor Heating & Bathroom
Available:18/20/24/28/32kW



VC-CB12
Floor Heating & Bathroom
Available:18/20/24/28/32kW

Internal Structure Diagram

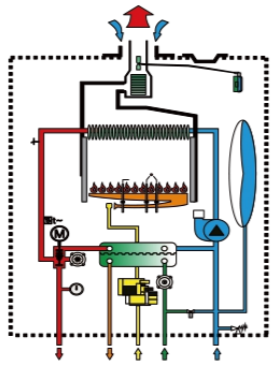
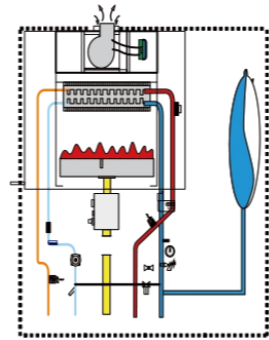
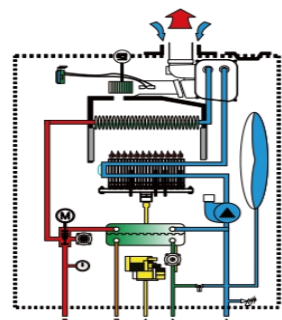


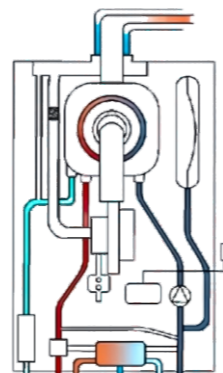
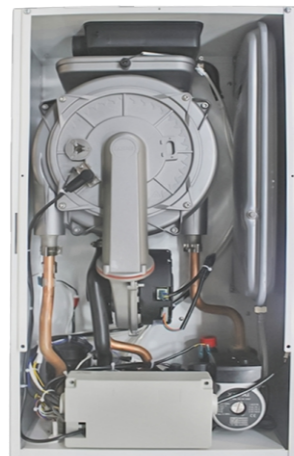
Plate Heating Type



Single Heat Exchanger Type



Condensing Type



Total premixed condensation Type

Main components



COMMERCIAL STORAGE GAS WATER HEATER

//Multiple Machines Installed In Parallel//



150~300L
(Optional Volume)

Advantages

- Large Heat Storage Capacity - 150L tank with rapid gas heating for continuous hot water supply
- Commercial-Grade Durability - Reinforced stainless steel tank, anti-corrosion, lifespan 10+ years
- Smart Temperature Control - $\pm 1^{\circ}\text{C}$ precision, eliminates temperature fluctuations
- Energy & Gas Saving - Grade 2 energy efficiency, $\geq 88\%$ thermal efficiency
- Safety Assurance - 12 safety protections (dry-burn/overpressure/gas leak prevention)

Specification

Parameter	Unit	Value
Product Model	/	RSTD20-150LWN
Rated Power	KW	20
Gas Type	/	Natural Gas: 2000Pa / LPG: 2800Pa
Liner Material	/	304 Stainless Steel
Gas Pressure Range	(Pa)	Natural Gas: 1700-3000 / LPG: 2300-3300
Water Pressure Range	(MPa)	Max. Working Water Pressure: 1.1
Temperature Adjustment Range	$^{\circ}\text{C}$	30-80
Temperature Control Method	/	External Thermostat Available
Installation Location	/	Indoor (Outdoor models can be placed outside)
Rated Storage Capacity	L	150
Gas Consumption (Natural Gas)	(m^3/h)	2.00
Hot Water Output at 25°C Temp. Rise	(L/min)	6
Reference Heating Area (Heating Only)	m^2	≤ 200
Unit Dimensions	mm	520 * 1300
Unit Weight	kg	48
Gas Inlet	/	G $\frac{3}{4}$ " / de25 / DN20
Cold Water Inlet	/	DN25
Hot Water Outlet	/	DN25
Ignition Method	/	Pulse Ignition

INSTANT ELECTRIC WATER HEATER



Optional Appearance



Optional Power
3.5KW/ 5.5KW/ 6KW /8KW /9KW



Optional Power
3.5KW/ 5.5KW/ 6KW /8KW /9KW



Optional Power
3.5KW/ 5.5KW/ 6KW /8KW /9KW



Optional Power
3.5KW/ 5.5KW/ 6KW /8KW /9KW



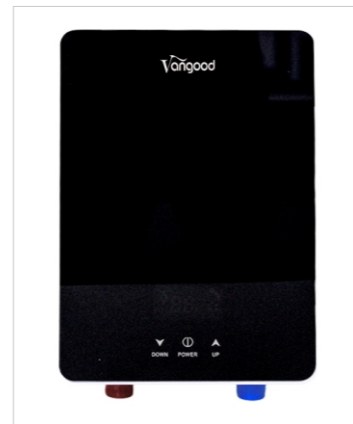
Optional Power
3.5KW/ 5.5KW/ 6KW /8KW /9KW



Optional Power
3.5KW/ 5.5KW/ 6KW /8KW /9KW



Optional Power
3.5KW/ 5.5KW/ 6KW /8KW /9KW

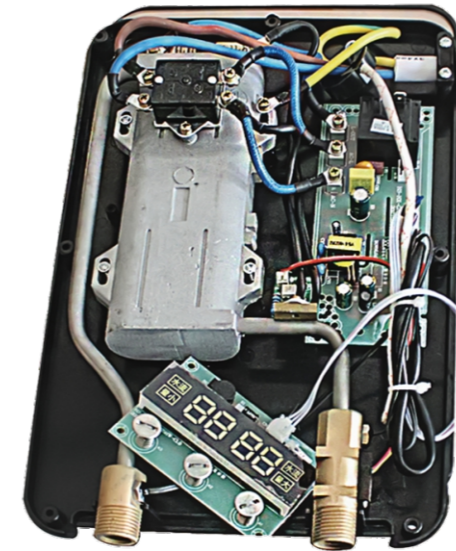


Optional Power
3.5KW/ 5.5KW/ 6KW /8KW /9KW

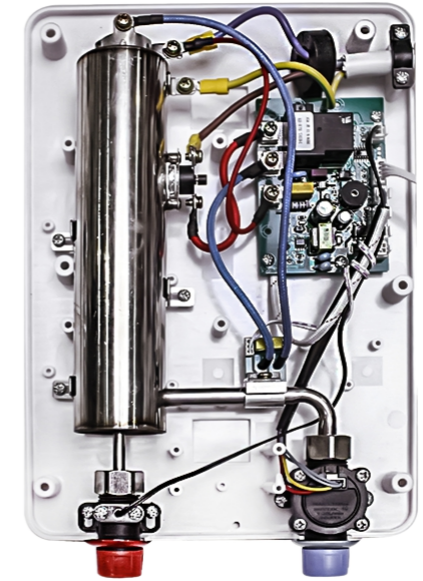


Optional Power
3.5KW/ 5.5KW/ 6KW /8KW /9KW

Internal Structure

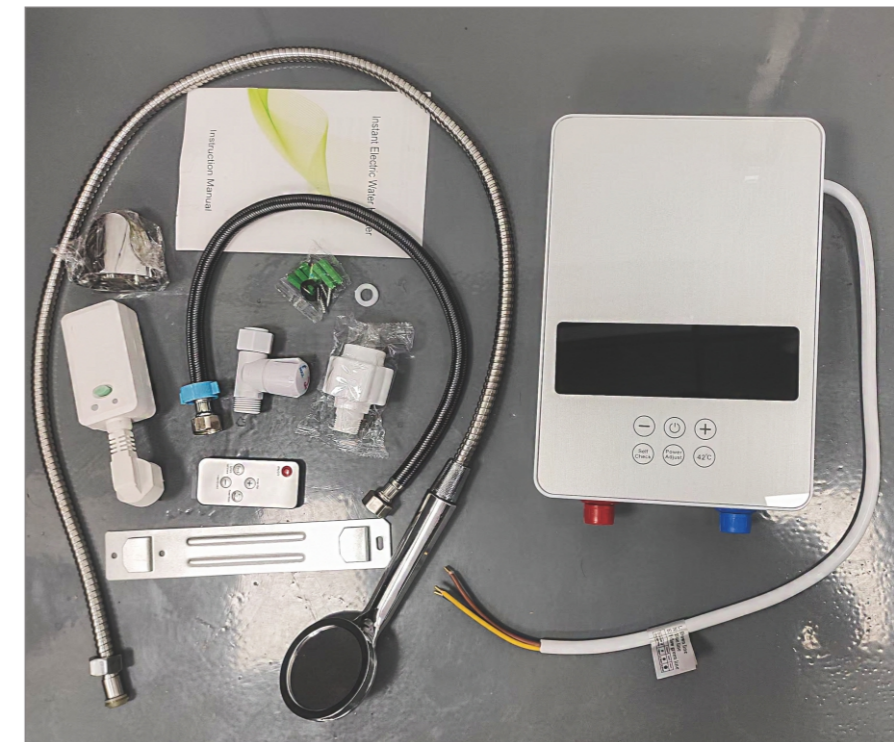


Heating Element
(Die-Cast Aluminum)



Heating Element
(304 Stainless Steel Cup)

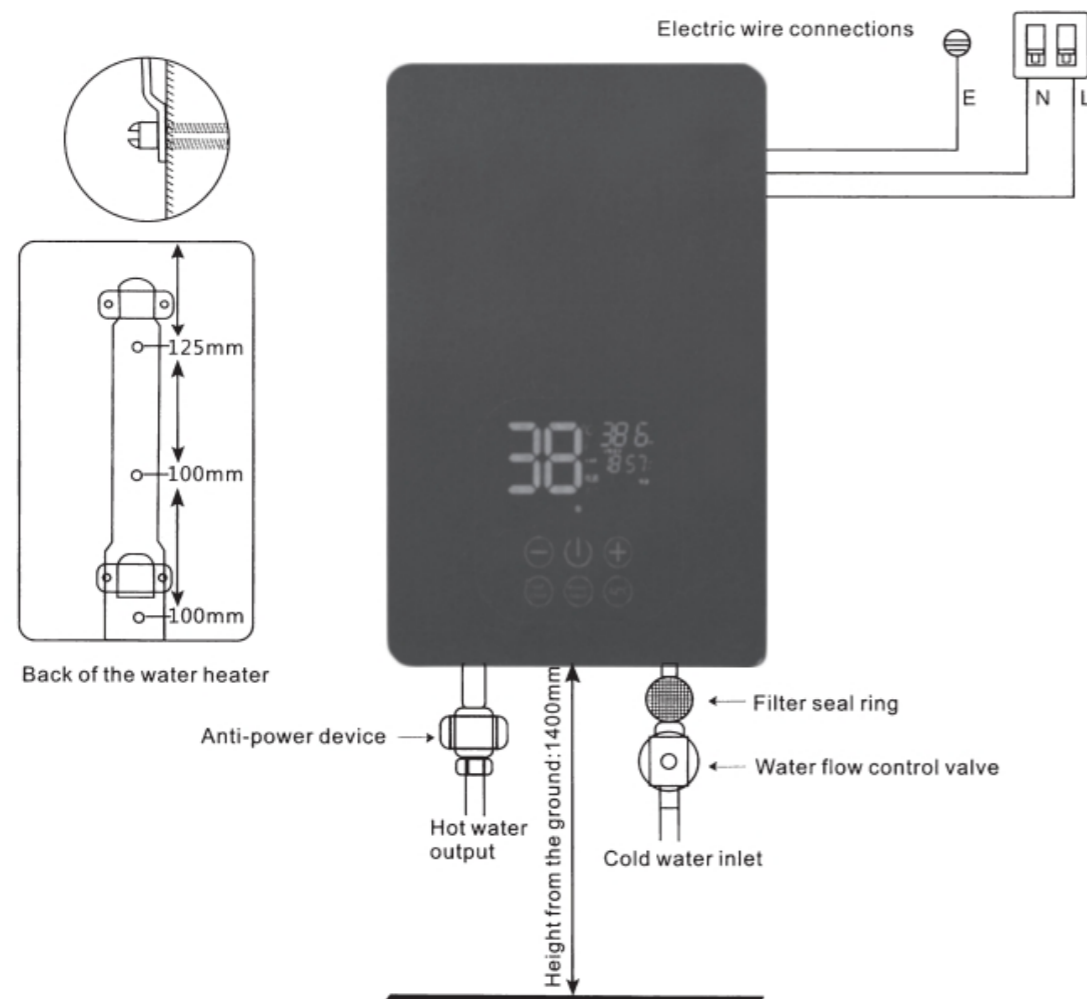
Accessories



Feature

- Tankless, instantaneous heating for on demand hot water, No pre-heating. No stand-by heating loss. Energy-saving.
- Adopt the technology of water & electricity isolation, and electric insulation wall to protect people from electric leakage amage.
- Microcomputer control, multi-power setting, suitable for different temperature needed in different season.
- Unique and high-tech heating component can auto control the temperature via the materials.
- Adopt advanced water flow induction technology ,it has overcome the difficulty of using water heater due to the low water pressure.
- Temperature memory function, avoid repetitive work.

Product Installation Diagram



Technical Data

Power	≤3.5KW	≤5.5KW	>6KW	>8KW	>9KW
Voltage	220V~ 50Hz/60Hz				
Circuit Breaker Requirement(A)	≥25	≥32		≥40	≥63
Copper Core Wire Requirement	1.5mm	2.5mm	4mm	6mm	10mm
Temp. setting range	30°C-55°C				
Water Pressure	0.02-0.7Mpa				
Overheat protection	60°C				
Thermal cut-off	95°C				
Pipe section	G1/2"				
Waterproof Level	IPX4				
Safety Level	IP25				

Power	≤3KW	≤4KW	≤6.5KW
Voltage	110-127V~ 60Hz		
Circuit Breaker Requirement(A)	≥32	≥40	≥63
Copper Core Wire Requirement	2.08mm	4mm	6mm
Temp. setting range	30°C-55°C		
Water Pressure	0.02-0.7Mpa		
Overheat protection	60°C		
Thermal cut-off	95°C		
Pipe section	G1/2"		
Waterproof Level	IPX4		
Safety Level	IP25		

BUILT-IN GAS STOVE



Feature

- High Efficiency Burners
- Automatic Electric Ignition
- Strong & Stable Flame
- Dual Fuel
- Continuous Corner-To-Corner Grates
- Dishwasher-Safe Cast Iron Grates

Products And Parameters



Tempered Glass Top
1 x Rapid burner (2.9 kW)
1 x Semi-rapid burner (1.7 kW)
Cut out size: 268 x 495 mm
Unit size: 300 x 510 x 115 mm



Stainless Steel Top
1 x Rapid burner (2.9 kW)
1 x Semi-rapid burner (1.7 kW)
Cut out size: 268 x 495 mm
Unit size: 300 x 510 x 115 mm



7mm Black Tempered Glass
Cast Iron Pan Support
L: 4.5kW R: 4.5kW
Imported Safety Device



7mm Black Tempered Glass
Cast Iron Pan Support
L: 4.5kW R: 4.5kW
Imported Safety Device



VG37501G
Black tempered glass top
Sabaf burner(4+4+2.5kw)
Enamel / cast iron pan support
Unit size:430*750*170mm



VG37502G
Black tempered glass top
Sabaf burner(4+4+2.5kw)
Enamel / cast iron pan support
Unit size:430*750*170mm



VG45901G
Black tempered glass top
Sabaf burner(3.5+2.75+1.75+1.0kw)
Enamel / cast iron pan support
Cut size: 550x470mm
Unit size: 590X510mm



VG45902G
Black tempered glass top
Sabaf burner(3.5+2.75+1.75+1.0kw)
Enamel / cast iron pan support
Cut size: 550x470mm
Unit size: 590X510mm



VG45917S
Stainless steel 201#
Sabaf burner (3.5+1.75+1.75+1.0kw)
Cast iron pan support
Cut size:560x480mm
Unit size: 590X510mm



VG45822S
Stainless steel 201#
Sabaf burner (3.5+1.75+1.75+1.0kw)
Cast iron pan support
Cut size:560x480mm
Unit size: 590X510mm



VG45901G
Black tempered glass top
Sabaf burner 3.5+2.75+1.75+1.75+1.0kw
Cast iron pan support
Cut size:722x464mm
Unit size: 760X500mm



VG45902G
Black tempered glass top
Sabaf burner 3.5+2.75+1.75+1.75+1.0kw
Cast iron pan support
Cut size:722x464mm
Unit size: 760X500mm



VG45917S
Stainless steel 201#
Sabaf burner 3.5+2.75+1.75+1.75+1.0kw
Cast iron pan support
Cut size:722x464mm
Unit size: 760X500mm



VG45822S
Stainless steel 201#
Sabaf burner 3.5+2.75+1.75+1.75+1.0kw
Cast iron pan support
Cut size:722x464mm
Unit size: 760X500mm

TABLE GAS STOVE



Feature

- Auto ignition
- Flame failure protection device available
- Compact design for space saving
- Both domestic and outdoor purpose is suitable
- One of LPG, Natural gas and biogas can be the power source

Products And Parameters



Model	2GB1
Power	1.8kW+2.8kW
Product size	710*410*70mm
Carton size	760*445*125mm
Container loading quantity (20/40/40HQ)	700/1420/1620



Model	2SA1
Power	3.4kW+4.3kW
Product size	700*370*80mm
Carton size	715*385*120mm
Container loading quantity (20/40/40HQ)	930/1890/2160



Model	2SB1
Power	3.4kW+4.3kW
Product size	700*370*80mm
Carton size	715*385*120mm
Container loading quantity (20/40/40HQ)	930/1890/2160



Model	2SC1
Power	3.4kW+4.3kW
Product size	700*370*80mm
Carton size	715*385*120mm
Container loading quantity (20/40/40HQ)	930/1890/2160



Model	3GB1
Power	1.8kW+0.75kW+2.8kW
Product size	710*410*70mm
Carton size	760*445*125mm
Container loading quantity (20/40/40HQ)	700/1420/1620



Model	3SA1
Power	3.4kW+0.75kW+4.3kW
Product size	700*370*80mm
Carton size	715*385*120mm
Container loading quantity (20/40/40HQ)	930/1890/2160



Model	3SB1
Power	3.4kW+0.75kW+4.3kW
Product size	700*370*80mm
Carton size	715*385*120mm
Container loading quantity (20/40/40HQ)	930/1890/2160



Model	3SB2
Power	3.4kW+1.0kW+4.3kW
Product size	700*370*80mm
Carton size	715*385*120mm
Container loading quantity (20/40/40HQ)	930/1890/2160





PARTS

Widely Adaptable
Customize Your Exclusive Hot Water Solution

➔ GAS WATER HEATER PARTS

B Burner >>>



Short 5-row burner



Outdoor unit burner



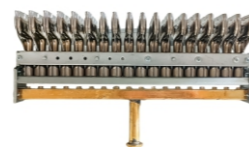
Harmonica-style burner



CE model burner



Short 7-row burner



T-type burner

P Pulse >>>



Pulse-01



Pulse-02



Pulse-03



Pulse-04



Pulse-05



Pulse-06



Pulse-07



Pulse-08



Pulse-09



Pulse-10

M Membrane >>>



Membrane-01



Membrane-02



Membrane-03



Membrane-04



Membrane-05



Membrane-06



Membrane-07



Membrane-08



Membrane-09



Membrane-10

S Solenoid Valve >>>



SV-01



SV-02



SV-03



SV-04



SV-05



SV-06

W Water-Gas Valve >>>



Zero Water Pressure Valve



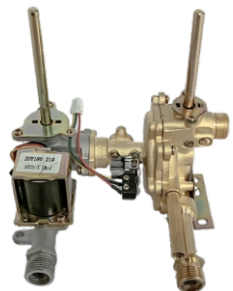
6L



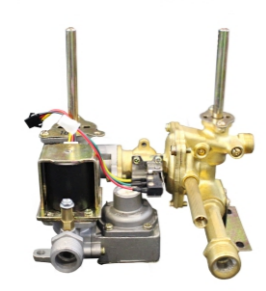
12L



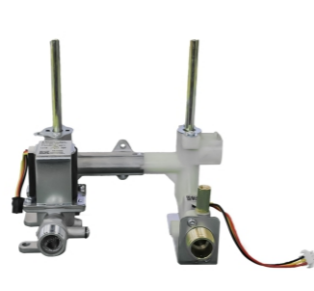
16L



20L



With pressure reducing valve



Plastic valve



Single valve

H Heat Exchanger >>>



Tinning water tank-01



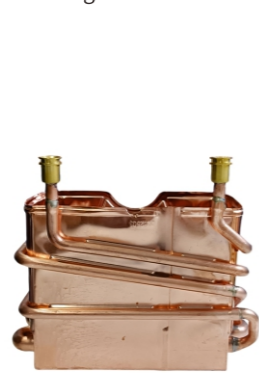
Tinning water tank-02



Oxygen-Free Copper tank-01



Oxygen-Free Copper tank-02



Oxygen-Free Copper tank-03



Oxygen-Free Copper tank-04

T Temperature Control >>>



Constant temperature control
(55°C~200°C)



Angle temperature control



Constant temperature control



Electric water heater
temperature control

D Display Screen >>>



DS-01



DS-02



DS-03



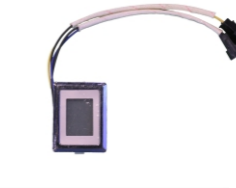
DS-04



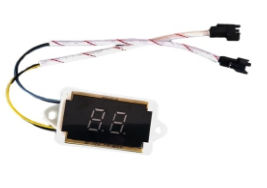
DS-05



DS-06



DS-07



DS-08



DS-09



DS-10



DS-11



DS-12

K Knob >>>



Knob-01



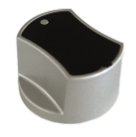
Knob-02



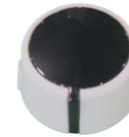
Knob-03



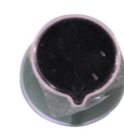
Knob-04



Knob-05



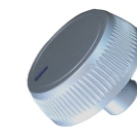
Knob-06



Knob-07



Knob-08



Knob-09

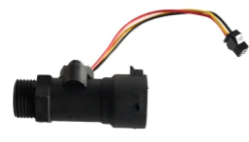


Knob-10

W Water Flow Switch >>>



Switch-01



Switch-02



Switch-03



Switch-04



Switch-05



Switch-06



Switch-07



Switch-08

N Nozzle >>>



∅ 0.45mm



∅ 0.5mm



∅ 0.55mm



∅ 0.6mm



∅ 0.65mm



∅ 0.7mm



∅ 0.75mm



∅ 0.8mm



∅ 0.9mm



∅ 0.95mm



∅ 0.97mm



∅ 1.15mm



∅ 1.4mm

P Proportional Valve >>>



CE Valve



Outdoor Unit Valve



VG-Valve-01



VG-Valve-02



VG-Valve-03



Wall-mounted boiler valve



Wall-mounted boiler valve

M Microswitch >>>



Two-wire microswitch



Two-wire microswitch



Two-wire microswitch



Three-wire microswitch



Three-wire microswitch

F Forced Exhaust Fan >>>



Outdoor unit fan



Short Fan



DC fan



Long Five Axial Flow Fan

O Other Accessories >>>



Hexagonal Press



pressure stabilizer



flow stabilizer



Valve Pressure holder



Water Valve Cover



valve pin



valve screw



Valve body assembly



tonka valve



Water Inlet Connector



Release Valve



flow switch release valve



Water Pump



Angle Sensor Switch



Shower Kit



Battery Box



Ignition pin set



temperature sensor



solenoid bridge wire



On Off Switch



Fan capacitor



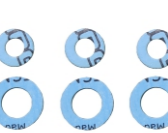
wind pressure switch



Gas Regulator



Exhaust Pipe



Gasket

BOILER PARTS

H Heat Exchangers >>>



CBH-01
Ariston Microtec TX
270 mm



CBH-02
Ariston Egis - Airfel
220 mm



CBH-03
Demirdokum - Ferrol
225 mm



CBH-04
Bosch - Classic - Classic Plus
270 mm

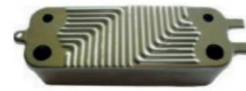
P Plate Exchangers >>>



CBH-05
Vaillant VCK
12 Plate



CBH-06
Ferrol



CBH-07
Bosch
20 Plate



CBH-08
Various Brands
12 Plate

E Expansion Tank >>>



CBX-01
8 Lt 3/8"
Ferrol



CBX-02
7 Lt 3/8" Back Output
Ariston



CBX-03
8 Lt 3/8"
Vaillant Turbotec



CBX-04
6 Lt 3/8" Long Sibop
Vaillant



CBX-05
6 Lt 3/8"
Various Brands



CBX-06
7 Lt 3/8"
Various Brands



CBX-07
8 Lt 3/8"
Various Brands



CBX-08
10 Lt 3/8"
Various Brands

B Blowers >>>



CBB-01
Vaillant VUW



CBB-02
ECA Colora - Confeo, Ariston



CBB-03
ECA Colora - Confeo, Ariston



CBB-04
Ariston Uno Trendy



CBB-05
Bosch
Tin Plate



CBB-06
Bosch Classic
Double Stage



CBB-07
Baymak Luna Baxi
Condensing



CBB-08
Baymak Novadens
Condensing

P Pumps >>>



CBP-01
TSL 12/6 84W
Bosch



CBP-02
15-60 95W
Various Brands

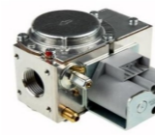


CBP-03
Wilo Pump KSL 15/5-3 82W
Various Brands



CBP-04
Grundfoss Pump 15/60 95W
Various Brands

G Gas Valves >>>



CBV-01
Various Brands



CBV-02
Various Brands



CBV-03
Various Brands



CBV-04
Various Brands

A Air Switches >>>



CBS-09
85/70 Pa
Various Brands



CBS-10
44/36 Pa
Various Brands



CBS-11
85/70 Pa
Various Brands



CBS-12
P= 0.52 mbar
Various Brands

F Flow Switch >>>



CBS-01
Various Brands



CBS-02
Flue Type



CBS-03
Ferrol Domitech



CBS-04
Bosch - Buderus GB 32



CBS-09
Ferrol



CBS-10
Bosch, Buderus Logomax



CBS-11
Vaillant Pro



CBS-12
Ferrol



CBS-13



CBS-14



CBS-15



CBS-16

S Safety Valves >>>



CBR-01
3 Bar, Plug-in
Various Brands



CBR-02
L Type
Immergas



CBR-03
3 Bar, Out Gear
Various Brands



CBR-04
7 Ba
Various Brands



CBR-05



CBR-06



CBR-07



CBR-08



CBR-09



CBR-10



CBR-11



CBR-12

S Sensors >>>



CBT-01
Ariston Egis



CBT-02
Pipe Type 1/2"
Various Brands



CBT-03
105 °C
Various Brands



CBT-04
Baymak - Demirdokum, Alarko

M Manometers >>>



CBM-01
Baymak Baxi



CBM-02
Ariston - ECA Colora



CBM-03
Ferrol Divatop



CBM-04
Vaillant WUV



CBM-05



CBM-06



CBM-07



CBM-08

I Ignition Electrode >>>



CBI-01
Demirdokum Aden



CBI-02
Ariston Micro Genus



CBI-03
Baymak Luna Baxi



CBI-04
Bosch

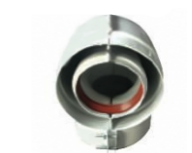
F Flue Pipes >>>



CBF-01
Demirdokum Aden



CBF-02
Ariston Micro Genus



CBF-03
Baymak Luna Baxi



CBF-04
Bosch

H Hydrostatic Valve >>>



V Valve Core >>>



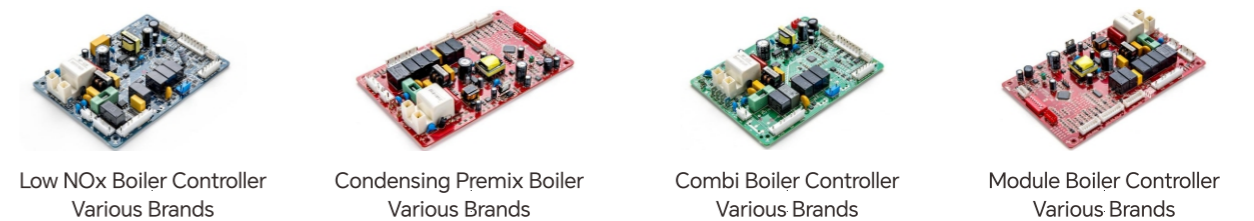
T Three Way Valves >>>



S Switch Valve >>>



C Control Boards >>>



O Other >>>



VANGOOD
WARM EVERY FAMILY