

**Product Name : RF Combiner Quadplexer 698-960 / 1710-2170 / 2300-2690 / 3300-3800MHz****Product Model : FC 07&09-17&21-23&27-33&38**

The combiner is the key RF device to combine multi-band signals in communication system. It is primarily employed in transmitters to combine signals from different frequency bands into a single feeder or antenna, thereby conserving resources and improving system efficiency. The combiner demonstrates excellent performance in terms of low passive intermodulation (PIM) products, low insertion loss, and high isolation, making it suitable for wireless network optimization, In-Building Distribution Systems (IBS), Base Transceiver Stations (BTS), Distributed Antenna Systems (DAS), and Antenna Feeder System (AFS).

Product Description

- ➔ Frequency covers 698-960 / 1710-2170 / 2300-2690 / 3300-3800MHz
- ➔ Pole or wall mounting
- ➔ Low PIM
- ➔ Suitable for indoor and outdoor applications

**Specifications**

Frequency range	698-960 / 1710-2170 / 2300-2690 / 3300-3800MHz
Insertion Loss	< 0.4 dB
Isolation	≥50 dB
Return Loss	≥19 dB
VSWR	≤1.25 dB
Inter-modulation IM3	≤-155dBc REV (2x43 dBm)
RF Input Power, CW	300W
Impedance	50Ω
Lightning Protection	3kA; 10/350 μs pulse
Net Weight (Single Unit)	≤2.62kg
Net Weight (Double Unit)	≤5.09kg
Dimensions (Single Unit) (exclude connectors)	195 x 170 x 51 mm / 7.68x6.69x2.01 inch
Dimensions (Double Unit) (exclude connectors)	195 x 170 x 107 mm / 7.68x6.69x4.21 inch
Operating temperature	-40°C to +65°C
Relative humidity	0~95%
Color	Grey (ML440c)
RoHS	Comply with RoHS
Ingress protection	IP67



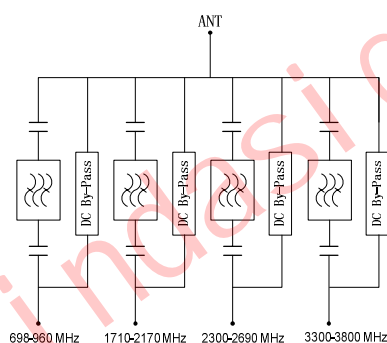
JINDASIGNAL

www.jindasignal.com

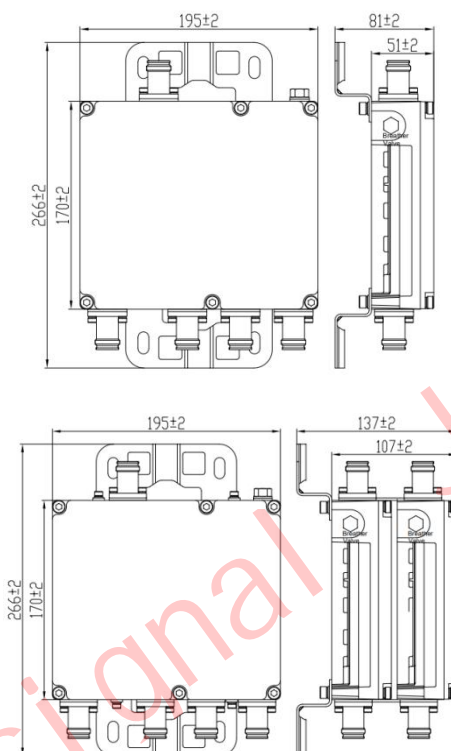
Product Selection:

Part No	Connector Type	Single Unit/ Double Unit
T11H230116-1S	4.3-10 Female	Single Unit
T11H230116-2S	DIN Female	Single Unit
T11H230116-3S	N Female	Single Unit
T11H230116-1D	4.3-10 Female	Double Unit
T11H230116-2D	DIN Female	Double Unit
T11H230116-3D	N Female	Double Unit

Block Diagram



Outline Drawing



Shenzhen Jindasignal Technology Co., Ltd.

Address: 3F, 1st Block, West Industrial Area, No. 29 Makan Rd., Xili Town, Nanshan District, Shenzhen City China

Phone: +86-755-86564010

Web site: www.jindasignal.com