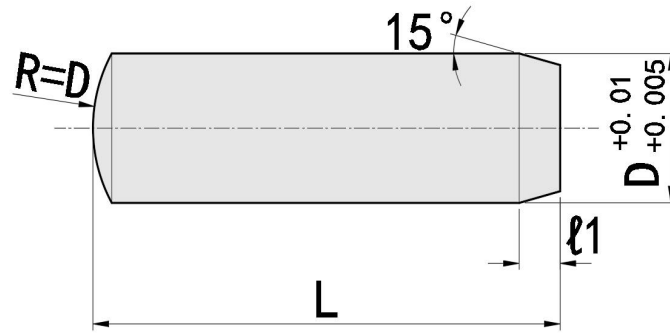




- 直杆型定位销
- Straight Dowel Pin

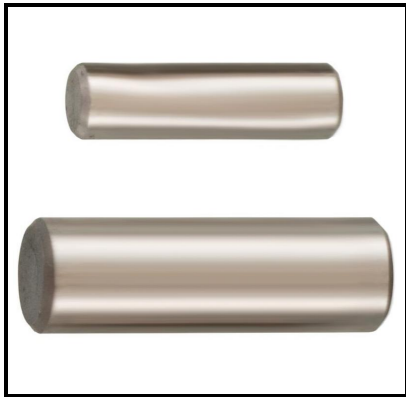
型号实例	型式 Type+D-L
例如	ZMS1-6

Part Number	Type+D-L
order	ZMS1-6



材质对照表(Materials)		
型号 Type	材质 Material	硬度 Hardness
ZMS	SUJ2	58HRC~

参数对照表(Specifications)																
型式Part Number												ℓ1				
Type	D	L														
ZMS	1	6	8	10									0.4			
	1.5	6	8	10									0.6			
	2	6	8	10	15	20							1			
	2.5	6	8	10	15	20	25	30					1			
	3	6	8	10	15	20	25	30	35	40				1.5		
	4	8	10	15	20	25	30	35	40	45	50			1.5		
	5	8	10	15	20	25	30	35	40	45	50			1.5		
	6	8	10	15	20	25	30	35	40	45	50	55	60	2		
	8	10	15	20	25	30	35	40	45	50	55	60	65	70	80	2.5
	10	15	20	25	30	35	40	45	50	55	60	65	70	80	3	
	12	20	25	30	35	40	45	50	55	60	70	80			3.5	
	13	30	40	50	60	70	80							3.5		

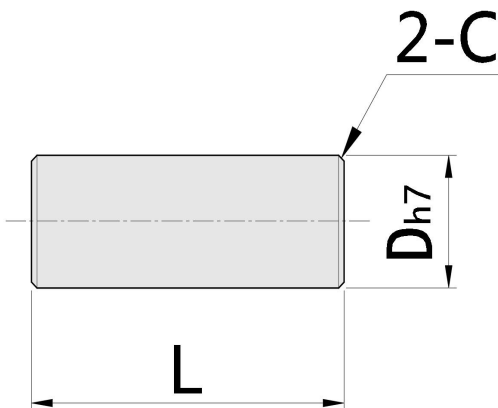


- 倒角C型负公差定位销
- Dowel Pins - Both Ends Chamfered

型号实例	型式 Type+D-L
例如	ZMSHHM2-6

Part Number	Type+D-L
order	ZMSHHM2-6

材质对照表(Materials)		
型号 Type	材质 Material	硬度 Hardness
ZMSHHM	SUS420	58HRC~
ZMSHSM	SUS304	/



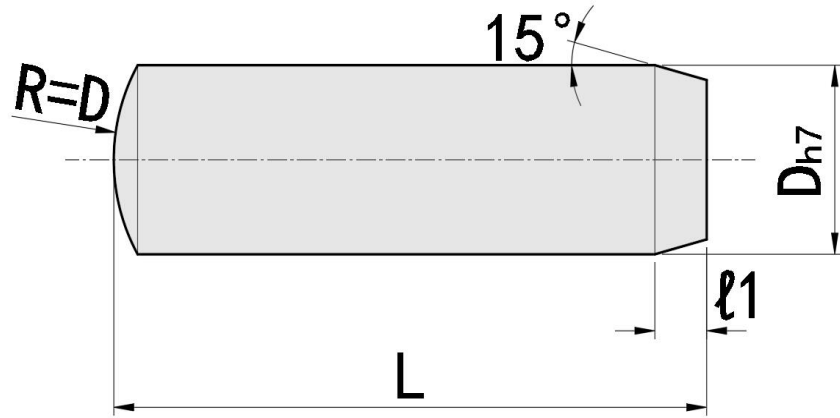
参数对照表(Specifications)				
型式Part Number				C
Type	D	Dh7	L	
ZMSHHM ZMSHSM	2	0	6 8 10 12 15	0.3以下 Below 0.3
	3	-0.01	6 8 10 12 15 20	
	4	0	8 10 12 15 20	
	5	-0.012	8 10 12 15 20	0.5
	6		10 12 15 20	
	8	0 -0.015	15 20	



- 直杆型负公差定位销
- Straight Dowel Pin

型号实例	型式 Type+D-L
例如	ZMSSH2-6

Part Number	Type+D-L
order	ZMSSH2-6



材质对照表(Materials)		
型号 Type	材质 Material	硬度 Hardness
ZMSSH	SUJ2	45~50HRC
ZMSH	SUS420	45~50HRC
ZMSHS	SUS304	/

参数对照表(Specifications)					
型式Part Number					±1
Type	D	Dh7	L		
ZMSSH	2	0	6	8 10 15	1
	3	-0.01	8	10 15 20	1
	4	0 -0.012	10 15 20		1.5

参数对照表(Specifications)							
型式Part Number						±1	
Type	D	Dh7	L				
ZMSH	1	0 -0.01	5	6	8	10	0.4
	1.5		5	6	8	10	0.6
	2		5	6	8	10 12 15 20	1
	2.5		6	8	10 12 15 20 25 30	1	
	3	0 -0.012	6	8	10 12 15 20 25 30 35 40	1	
	4		8	10 12 15 20 25 30 35 40 45 50	1.5		
	5		8	10 12 15 20 25 30 35 40 45 50	1.5		
	6		8	10 12 15 20 25 30 35 40 45 50 55 60	2		
	8		0	10 15 20 25 30 35 40 50 60	2		
	10		-0.015	15 20 25 30 35 40 50 60	2.5		

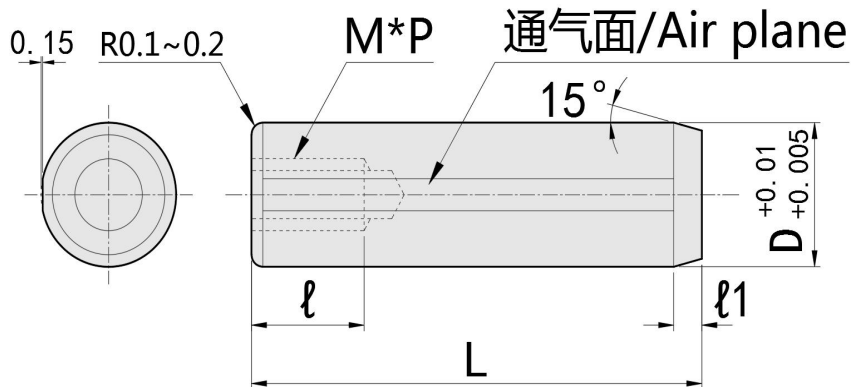
参数对照表(Specifications)							
型式Part Number					±1		
Type	D	Dh7	L				
ZMSHS	1	0 -0.01	5	6	8	10	0.4
	1.5		5	6	8	10	0.6
	2		5	6	8	10 12 15 20	1
	2.5		6	8	10 12 15	1	
	3	0 -0.012	6	8	10 12 15 20	1	
	4		8	10 12 15 20	1.5		
	5		8	10 12 15 20	1.5		
	6		10	12 15 20	2		
8	0 -0.015	15	20	2			



- 带拉拔螺纹型正公差定位销
- Tapped Precision Dowel Pin

型号实例	型式 Type+D-L
例如	ZMSTP5-10

Part Number	Type+D-L
order	ZMSTP5-10



材质对照表(Materials)		
型号 Type	材质 Material	硬度 Hardness
ZMSTP	SUJ2	58HRC~
ZMSTPC	SUS420	58HRC~
ZMSTPCS	SUS304	/

参数对照表(Specifications)															
型式Part Number															
Type	D	L								ℓ1	M*P	ℓ			
ZMSTP	5	10	15	20	25	30				1.5	3*0.5	6			
	6	10	15	20	25	30	35	40	50	2	4*0.7	8			
	8	15	20	25	30	35	40	45	50	60	70	80	2	5*0.8	8
	10	15	20	25	30	35	40	45	50	60	70	80	2.5	6*1.0	10
	12	20	30	40	50	60	70	80					2.5	6*1.0	10
	13	40	50	60	70	80							2.5	8*1.25	15
	16	40	50	60	70								3	8*1.25	15

参数对照表(Specifications)												
型式Part Number												
Type	D	L					ℓ1	M*P	ℓ			
ZMSTPC	5	10	15	20			1.5	3*0.5	6			
	6	15	20	25	30		2	4*0.7	8			
	8	15	20	25	30	35	40	2	5*0.8	10		
	10	20	25	30	35	40	45	50	60	2.5	6*1.0	10
	12	30	40	50	60			2.5	6*1.0	10		
	13	30	40	50	60			2.5	8*1.25	15		

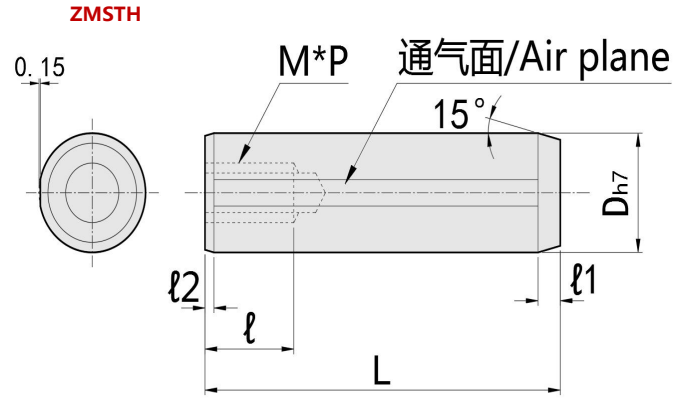
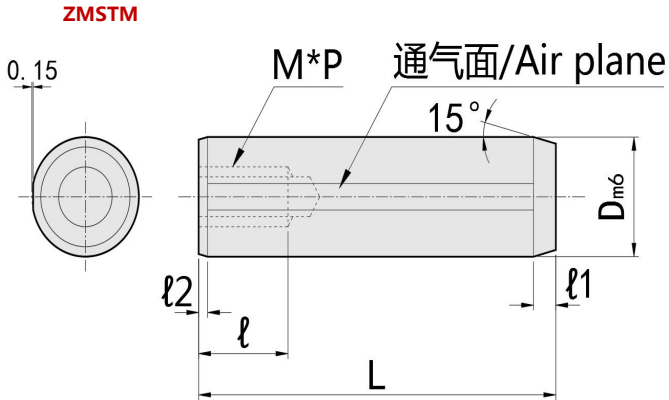
参数对照表(Specifications)											
型式Part Number											
Type	D	L					ℓ1	M*P	ℓ		
ZMSTPCS	5	10	15	20	25	30	1.5	3*0.5	6		
	6	10	15	20	25	30	35	40	2	4*0.7	8
	8	15	20	25	30	35	40	45	50	2	5*0.8



- 带拉拔螺纹型负公差定位销
- Tapped Precision Dowel Pin

型号实例	型式 Type+D-L
例如	ZMSTM5-10

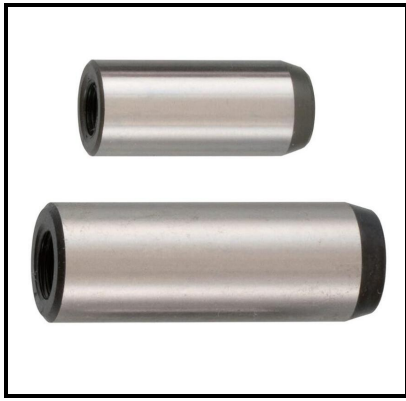
Part Number	Type+D-L
order	ZMSTM5-10



材质对照表(Materials)		
型号 Type	材质 Material	硬度 Hardness
ZMSTM	SUJ2	45~50HRC
ZMSTH	SUJ2	45~50HRC

参数对照表(Specifications)																	
Type	D	Dm6	型式Part Number										l1	l2	M*P	l	
			L														
ZMSTM	5	0.012	10	15	20	25	30							1.5	0.3	M3*0.5	6
	6	0.004	10	15	20	25	30	35	40	50				2	0.3	M4*0.7	8
	8	0.015	15	20	25	30	35	40	45	50	60	70	80	2	0.5	M5*0.8	8
	10	0.006	15	20	25	30	35	40	45	50	60	70	80	2.5	0.5	M6*1.0	10
	12	0.018 0.007	20	30	40	50	60	70	80					2.5	1.0	M6*1.0	10
	13		40	50	60	70	80							2.5	1.0	M8*1.25	15
	16		40	50	60	70	80							3	1.5	M8*1.25	15
20	0.021 0.008	50	60	70	80								3	1.5	M10*1.5	18	

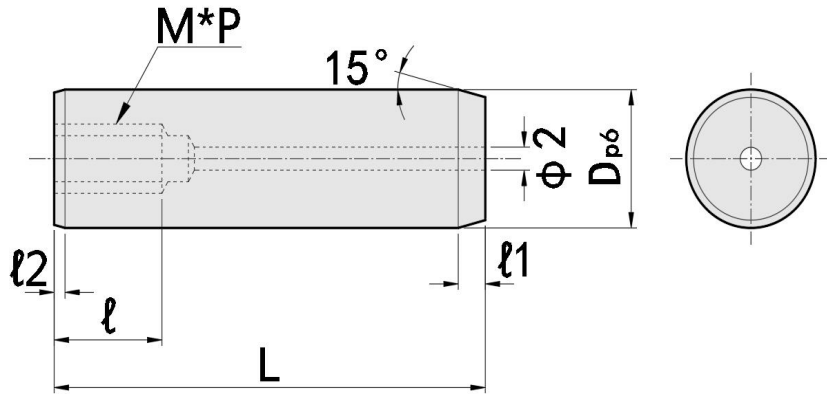
参数对照表(Specifications)																			
Type	D	Dh7	型式Part Number										l1	l2	M*P	l			
			L																
ZMSTH	5	0	10	15	20	25	30							1.5	0.3	M3*0.5	6		
	6	-0.012	10	15	20	25	30	35	40					2	0.3	M4*0.7	8		
	8	0	15	20	25	30	35	40	45	50	60	70	80	2	0.5	M5*0.8	8		
	10	-0.015	15	20	25	30	35	40	45	50	60	70	80	100	120	2.5	0.5	M6*1.0	10
	12	0 -0.018	20	30	40	50	60	70	80	100	120			2.5	1.0	M6*1.0	10		
	13		40	50	60	70	80	100	120					2.5	1.0	M8*1.25	15		
	16		40	50	60	70	80	100	120	150				3	1.5	M8*1.25	15		



- 一端螺纹通孔型正公差定位销
- Dowel Pins - One End Chamfered, One

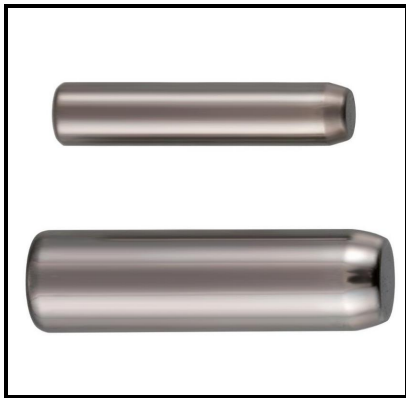
型号实例	型式 Type+D-L
例如	ZTHS6-15

Part Number	Type+D-L
order	ZTHS6-15



材质对照表(Materials)		
型号 Type	材质 Material	硬度 Hardness
ZTHS	SUJ2	45~50HRC
ZTHSS	SUS420	45~50HRC

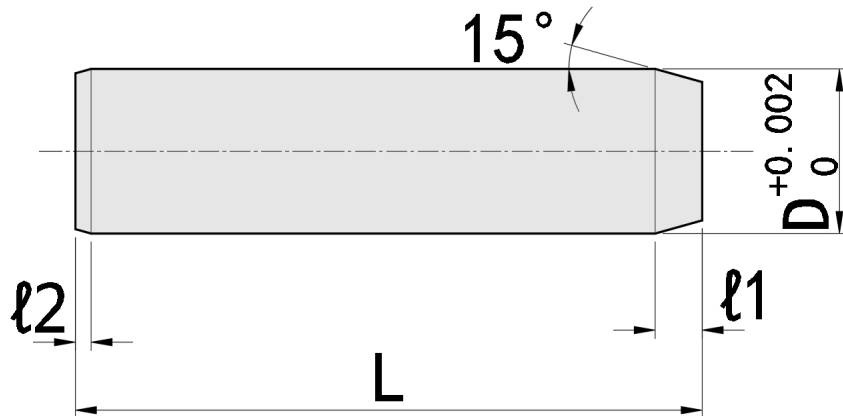
参数对照表(Specifications)											
		型式Part Number					l1	l2	M*P	l	
Type	D	Dp6	L								
ZTHS ZTHSS	6	+0.02 +0.012	15	20	25	30	35	2	0.3	M4*0.7	8
	8	+0.024	15	20	25	30	35	2	0.5	M5*0.8	8
	10	+0.015	20	25	30	35	40	2.5	0.5	M6*1.0	10
	12	+0.029 +0.018	20	25	30	35	40	45	2.5	1	M6*1.0



- 高精度定位销
- High Precision Dowel Pin

型号实例	型式 Type+D-L
例如	ZMSV2-6

Part Number	Type+D-L
order	ZMSV2-6



材质对照表(Materials)		
型号 Type	材质 Material	硬度 Hardness
ZMSV	SUJ2	58HRC~

参数对照表(Specifications)									
		型式Part Number					l1	l2	
Type	D	L							
ZMSV	2	6	8	10			1	0.2	
	3	8	10	15	20	25	30	1	0.5
	4	10	15	20	25	30		1.5	0.5
	5	10	15	20	25	30		1.5	0.5
	6	10	15	20	25	30		2	0.5
	8	20	30	40				2.5	0.5
	10	30	40	50	60			3	0.5



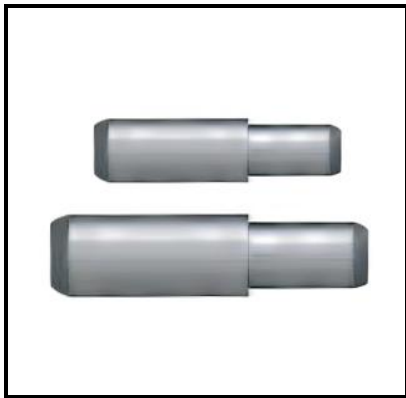
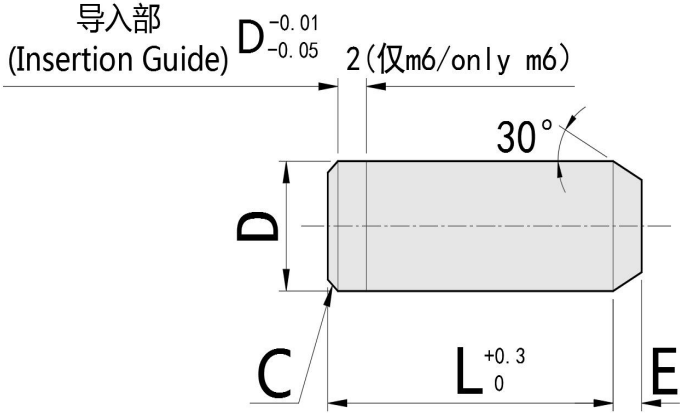
- 直锥型定位销
- Straight taper locating pin

型号实例	型式 Type+D-L
例如	ZCUM3-10

Part Number	Type+D-L
order	ZCUM3-10

材质对照表(Materials)			
型号Type		材质	硬度
Dm6	Dg6	Material	Hardness
ZCUM	ZCUG	SUS420	55~60HRC

参数对照表(Specifications)							
型式Part Number							
Type	D	Dm6	Dg6	L		E	C
ZCUM ZCUG	3	+0.008 +0.002	-0.002 -0.008	10	15	1	0.5
	4	+0.012 +0.004	-0.004 -0.012	10	15 20	1.5	0.5
	5			10 15 20	1.5	0.5	
	6			10	15 20	2	1
8	+0.015 +0.006	-0.005 -0.014	20		2	1	



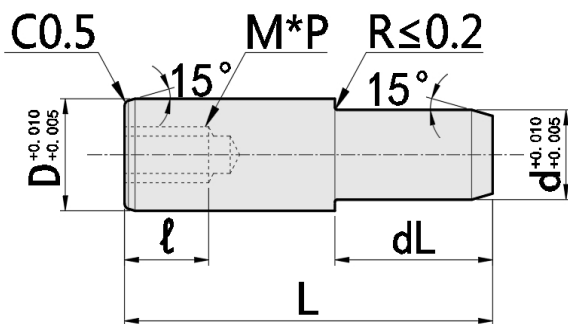
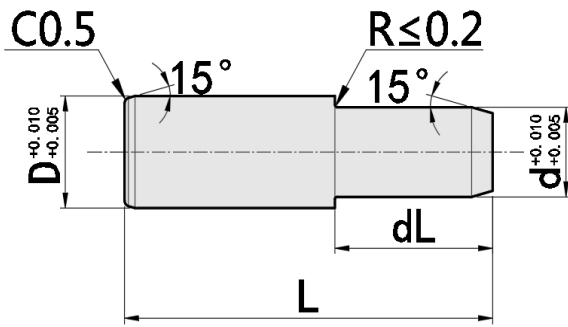
- 直锥型定位销
- Straight taper locating pin

型号实例	型式 Type+D-L
例如	ZMSFW5-15

Part Number	Type+D-L
order	ZMSFW5-15

材质对照表(Materials)		
型号 Type	材质 Material	硬度 Hardness
ZMSFW	SUJ2	58HRC~
ZMSFWM	SUJ2	58HRC~

参数对照表(Specifications)							
型式 Part Number				d	dL	仅ZMSFWM ZMSFWM only	
Type	D	L			M*P	ℓ	
ZMSFW ZMSFWM	5	15	4	5	/	/	
	5	25	4	10	/	/	
	6	20	5	10	/	/	
	6	30	5	15	M3*0.5	6	
	8	25	6	10	M4*0.7	8	
	8	35	6	15	M4*0.7	8	
	10	35	8	15	M5*0.8	8	
	10	40	8	15	M5*0.8	8	
	13	45	10	20	M6*1.0	10	
	13	55	10	25	M6*1.0	10	
	13	70	10	30	M6*1.0	10	





■ 大头锥角标准型定位销

■ Large Head Locating Pin - Tapered Tip, Straight Shank

型号实例	型式 Type+D公差/形状+D-P
例如	ZJPBB2-3

Part Number	Type+D tolerance/shape+D-P
order	ZJPBB2-3

【!】导入部分仅适用公差P6。

【!】Tolerance P6 only applies to the import part.

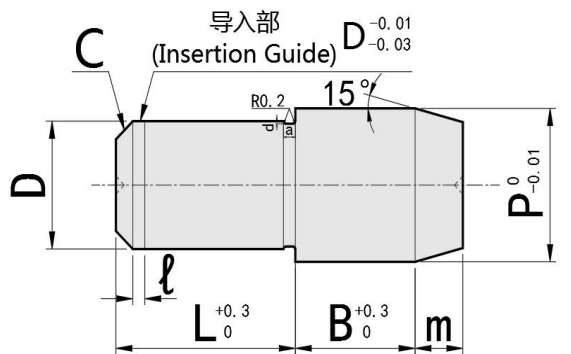
【!】退刀槽尺寸为参考值。

【!】The size of the retreating groove is the reference value.

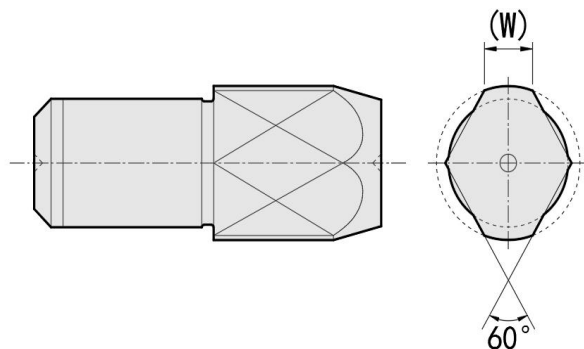
D < 3 : a=0.5 , d=D-0.1

D ≥ 3 : a=1 , d=D-0.2

圆形 / Round



多棱型 / Diamond



材质对照表(Materials)				
型号Type	D公差/形状 D tolerance/shape	材质 Material	硬度 Hardness	表面处理 Surface Treatment
	ZJP	圆形/Round BB(m6) BPB(P6)	9CrWMn	40~50HRC
ZGJP	9CrWMn		50~55HRC	镀硬铬Hard Chrome Plating
ZBJP	9CrWMn		/	/
ZSJP	SUS304		/	/
ZHJP	多棱型/Diamond DB(m6) DPB(P6)	SUS304	镀层硬度750HV~ Plating Hardness: 750 HV min.	镀硬铬 Hard Chrome Plating
ZCJP		SUS420	50~55HRC	/

参数对照表(Specifications)											
Type	D公差/形状 D tolerance/shape	型式Part Number				L	B	C	m	l	(W)
		D	Dm6	Dp6	P						
ZJP ZGJP ZBJP ZSJP ZHJP ZCJP	圆形/Round BB(m6) BPB(P6)  多棱型/Diamond DB(m6) DPB(P6)	2	+0.008	+0.012	3 4	4	3	0.5	1	0	1.2
		3	+0.002	+0.006	4 5 6	5	5	0.5	2	1	1.5
		4	+0.012 0.004	+0.02 +0.012	5 6	5	6	1	3	1	1.8
		5			6 8	10	6	1	3	1	2.2
		6			8 10	10	8	1	3	1	3
		8	+0.015	+0.024	10 12 13	15	8	1.5	4	1	3.5
		10	+0.006	+0.015	12 13 15	15	10	2	4	1	4
		12	+0.018 +0.007	+0.029 +0.018	13 15 16	15	10	2	4	1	5
		13			15 16	22	10	2	4	2	5.5
		16			20 25	22	10	3	5	2	7
20	+0.021 +0.008	+0.035 +0.022	25 30	30	15	3	5	2	9		



- 大头锥角内螺纹型定位销
- Large Head Locating Pin - Tapered Tip, Tapped Shank

型号实例	型式 Type+D公差/形状+D-P
例如	ZJPBTB2-3

Part Number	Type+D tolerance/shape+D-P
order	ZJPBTB2-3

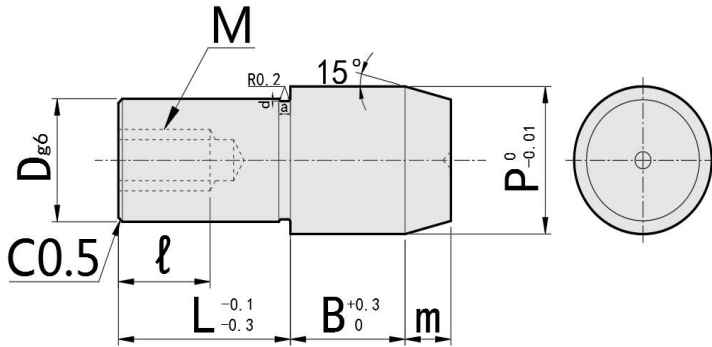
【!】退刀槽尺寸为参考值。

【!】The size of the retreating groove is the reference value.

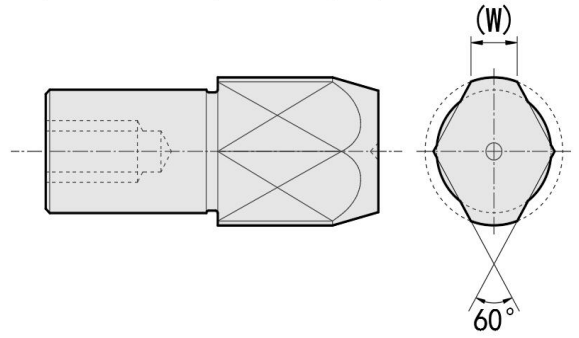
$D < 3$  :  $a=0.5$ ,  $d=D-0.1$

$D \geq 3$  :  $a=1$ ,  $d=D-0.2$

圆形 / Round



多棱型 / Diamond



材质对照表(Materials)				
型号Type	形状/Shape	材质	硬度	表面处理
		Material	Hardness	Surface Treatment
ZJP	圆形/Round BTB	9CrWMn	60~63HRC	/
ZGJP		9CrWMn	50~55HRC	镀硬铬Hard Chrome Plating
ZSJP		SUS304	/	/
ZHJP	多棱型/Diamond DTB	SUS304	镀层硬度750HV~ Plating Hardness: 750 HV min.	镀硬铬 Hard Chrome Plating
ZCJP		SUS420	50~55HRC	/

参数对照表(Specifications)										
型式Part Number		D	Dg6	P	L	B	m	(W)	M 粗牙螺纹/Coarse	l
Type	形状/Shape									
ZJP ZGJP ZBJP ZSJP ZHJP ZCJP	圆形/Round BTB	6	-0.004	8 10	10	8	3	3	M3	5
		6T	-0.012	8 10	10	8	3	3	M2.5	4
		8	-0.005 -0.014	10 12 13	15	8	4	3.5	M5	8
		8T		10 12 13	15	8	4	3.5	M4	6
	多棱型/Diamond DTB	10	12 13 15	15	10	4	4	M5	8	
		12	-0.006 -0.017	13 15 16	15	10	4	5	M5	8
		13		15 16	22	10	4	5.5	M8	12
		16	20 25	22	10	5	7	M8	12	
20	-0.007 -0.02	25 30	30	15	5	9	M8	12		





- 大头锥角外螺纹型定位销
- Large Head Locating Pin - Tapered Tip, Threaded Shank

型号实例	型式 Type+D形状+D-P
例如	ZJPNBB3-3.5

Part Number	Type+D shape+D-P
order	ZJPNBB3-3.5

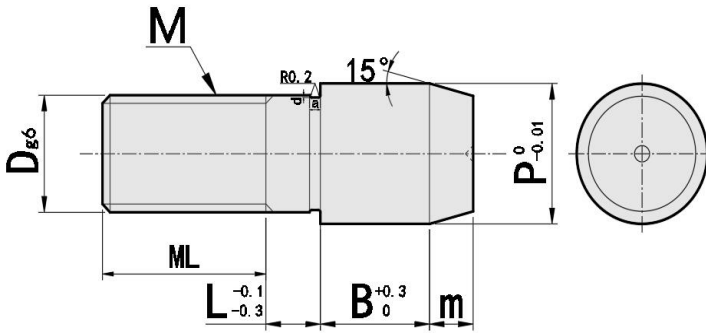
【!】退刀槽尺寸为参考值。

【!】The size of the retreating groove is the reference value.

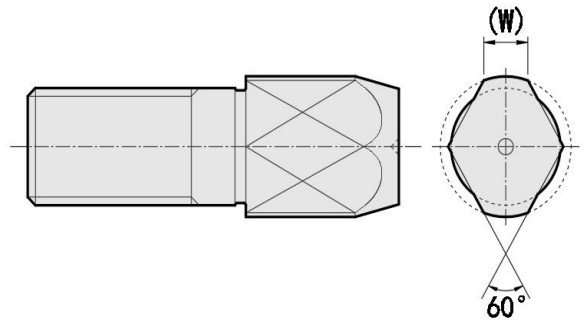
$D < 3$  :  $a=0.5$  ,  $d=D-0.1$

$D \geq 3$  :  $a=1$  ,  $d=D-0.2$

圆形 / Round



多棱型 / Diamond



材质对照表(Materials)				
	型号Type		材质 Material	硬度 Hardness
	D形状/Shape			
ZJPN	BB(圆形Round)		9CrWMn	60~63HRC
ZSJPN			SUS304	/
ZCJPN	D(多棱型Diamond)		SUS420	50~55HRC

参数对照表(Specifications)															
Type	D形状/Shape	型式Part Number					L	B	ML	M 粗牙螺纹/Coarse	m	(W)			
		D	Dg6	P											
ZJPN ZSJPN ZCJPN	圆形/Round BB	3	-0.002 -0.008	3.5	4	4.5	5	6	2	5	4.5	M3	2	1.5	
		4	-0.004 -0.012	4.5	5	6	7		2	6	6	M4	3	1.8	
		5		6	7	8		3	6	7.5	M5	3	2.2		
	多棱型/Diamond D	6		7	8	9	10		3	8	9	M6	3	3	
		8	-0.005	9	10	11	12	13		5	8	12	M8	4	3.5
		10	-0.014	11	12	13			5	10	15	M10	4	4	



- 小头锥角标准型定位销
- Small Head Locating Pin - Tapered Tip, Straight

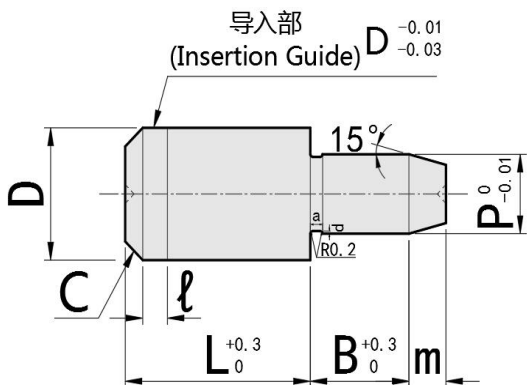
型号实例	型式 Type+D公差/形状+D-P
例如	ZJPSB2-2

Part Number	Type+D tolerance/shape+D-P
order	ZJPSB2-2

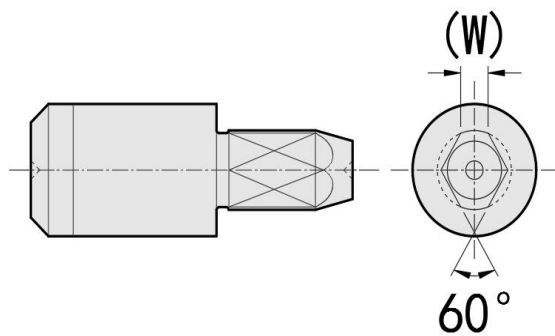
- 【!】导入部分适用公差m6、P6。
- 【!】Tolerance m6、P6 applies to the import part.
- 【!】退刀槽尺寸为参考值。
- 【!】The size of the retreating groove is the reference value.

D < 3 : a=0.5 , d=D-0.1      D ≥ 3 : a=1 , d=D-0.2

圆形 / Round



多棱型 / Diamond



材质对照表(Materials)				
型号Type	D公差/形状 D tolerance/shape	材质	硬度	表面处理
		Material	Hardness	Surface Treatment
ZJP	圆形/Round SB(m6) SPB(P6)	9CrWMn	60~63HRC	/
ZGJP		9CrWMn	50~55HRC	镀硬铬Hard Chrome Plating
ZBJP		9CrWMn	/	/
ZSJP		SUS304	/	/
ZHJP	多棱型/Diamond DS(m6) DPS(P6)	SUS304	镀层硬度750HV~ Plating Hardness: 750 HV min.	镀硬铬 Hard Chrome Plating
ZCJP		SUS420	50~55HRC	/

参数对照表(Specifications)															
	D公差/形状 D tolerance/shape	型式Part Number					L	B	C	m	l	(W)			
		D	Dm6	Dp6	P										
ZJP ZGJP ZBJP ZSJP ZHJP ZCJP	圆形/Round SB(m6) SPB(P6)	2	+0.008	+0.012	1	2	4	2	0.3	0.5	0	/			
		3	+0.002	+0.006	1	2	3	5	3	0.5	0.5	1	/		
		4	+0.012 0.004	+0.02 +0.012	2	3	4	5	3	1	1	1	1		
		5			2	3	4	5	10	5	1	2	1	1.2	
		6			2	3	4	5	6	10	5	1	2	1	1.5
		8	+0.015	+0.024	3	4	5	6	8	15	6	1.5	3	2	1.8
	10	+0.006	+0.015	3	4	5	6	8	10	15	8	2	3	2	2.2
	多棱型/Diamond DS(m6) DPS(P6) 适用于D≥4 Apply to D 4 or higher	12	+0.018 +0.007	+0.029 +0.018	5	6	8	10	12	15	8	2	3	2	2.5
		13			6	8	10	12	13	22	8	2	4	2	3
		16			10	12	13	14	15	16	22	10	3	4	2
20		+0.021 +0.008			+0.035 +0.022	13	14	15	16	20	30	10	3	4	2



■ 小头锥角内螺纹型定位销

■ Small Head Locating Pin - Tapered Tip, Tapped Shank

型号实例	型式 Type+D形状+D-P
例如	ZJPSTB6-4

Part Number	Type+D shape+D-P
order	ZJPSTB6-4

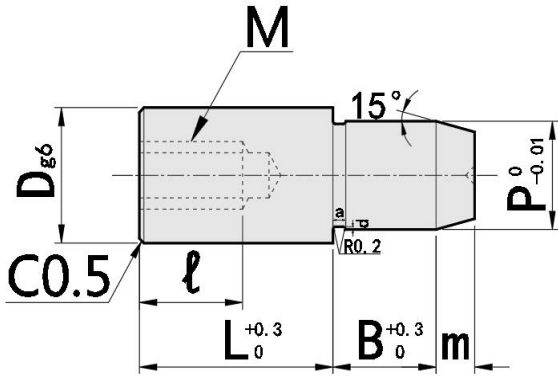
【!】退刀槽尺寸为参考值。

【!】The size of the retreating groove is the reference value.

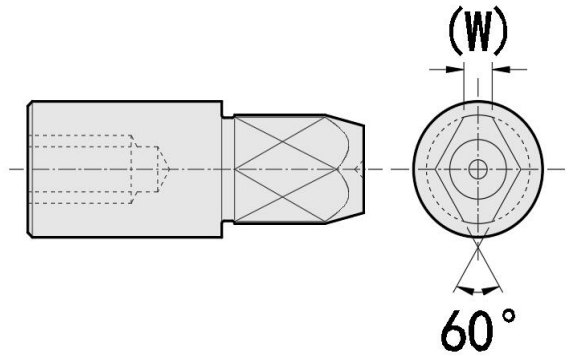
$D < 3$  :  $a=0.5$  ,  $d=D-0.1$

$D \geq 3$  :  $a=1$  ,  $d=D-0.2$

圆形 / Round



多棱型 / Diamond



材质对照表(Materials)			
型号Type	形状/Shape	材质Material	硬度Hardness
	ZJPS	TB(圆形Round)	9CrWMn
ZSJPS	TS(多棱型Diamond)	SUS304	/
ZCJPS		SUS420	50~55HRC

参数对照表(Specifications)													
Type	D形状/Shape	型式Part Number				L	B	m	M 粗牙螺纹/Coarse	(W)			
		D	Dg6	P									
ZJPS ZSJPS ZCJPS	圆形/Round TB	6	-0.004 -0.012	4	5	10	5	2	M3	1.5			
		8	-0.005	6	7	15	6	3	M5	1.8			
	多棱型/Diamond TD	10	-0.014	7	8	9	10	15	8	3	M5	2.2	
		12	-0.006 -0.017	8	9	10	11	12	15	8	3	M5	2.5



■ 定位销 大头圆锥型 标准型

■ Large Head Locating Pin - Round Tapered Tip, Straight Shank

型号实例	型式 Type+D公差+D-P
例如	ZJPRBB2-3

Part Number	Type+D tolerance+D-P
order	ZJPRBB2-3

【!】导入部分适用公差P6。

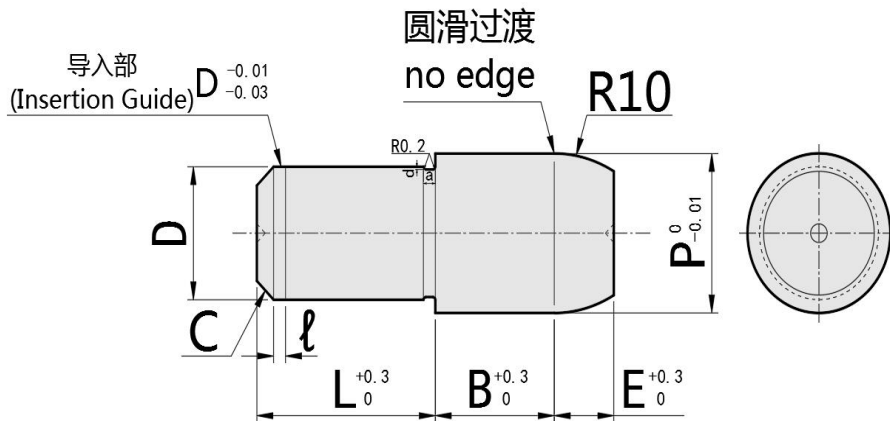
【!】Tolerance P6 only applies to the import part.

【!】退刀槽尺寸为参考值。

【!】The size of the retreating groove is the reference value.

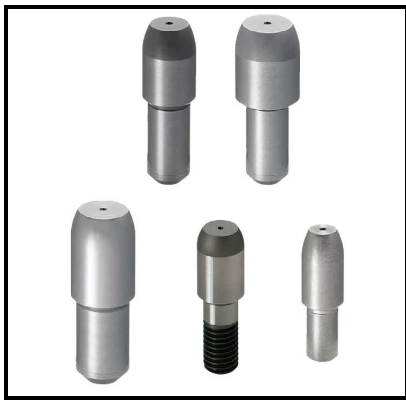
D < 3 : a=0.5 , d=D-0.1

D ≥ 3 : a=1 , d=D-0.2



材质对照表(Materials)					
型号Type	D公差 D tolerance	材质 Material	硬度 Hardness	表面处理 Surface Treatment	
	ZJPRB				标准型 Standard
ZGJPRB	9CrWMn	50~55HRC	镀硬铬Hard Chrome Plating		
ZSJPRB	SUS304	/	/		
ZCJPRB	SUS420	50~55HRC	/		
ZMJPRB	B(m6)	9CrWMn	60~63HRC	抛光Polishing	
ZMGJPRB	PB(p6)	9CrWMn	60~63HRC	镀硬铬Hard Chrome Plating 抛光Polishing	
ZMCJPRB		SUS420	50~55HRC	抛光Polishing	

参数对照表(Specifications)											
Type	D公差 D tolerance	型式Part Number				L	B	C	E	l	
		D	Dm6	Dp6	P						
ZJPRB ZGJPRB ZSJPRB ZCJPRB  (抛光/Polishing) ZMJPRB ZMGJPRB ZMCJPRB 适用于D≥5 Apply to D ≥ 5 or higher	标准型 Standard	2	+0.008	+0.012	3 4	4	3	0.5	3	0	
		3	+0.002	+0.006	4 5 6	5	5	0.5	3	1	
		4	+0.012 0.004	+0.02 +0.012	5 6	5	6	1	4	1	
		5			6 8	10	6	1	4	1	
		6	8 10	10	8	1	5	1			
		8	+0.015 +0.006	+0.024 +0.015	10 12 13	15	8	1.5	5	1	
		10			12 13 15	15	10	2	5	1	
		12	B(m6)	+0.018 +0.007	+0.029 +0.018	13 15 16	15	10	2	6	1
		13				15 16	22	10	2	6	2
		16				20 25	22	10	3	7	2
20	+0.021 +0.008	+0.035 +0.022				25 30	30	15	3	7	2



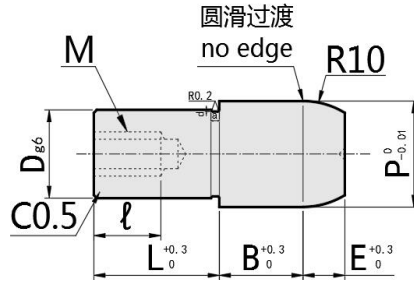
- 定位销 大头圆锥型 内螺纹型 外螺纹型
- Large Head Locating Pin - Round Tapered Tip, Straight Shank

型号实例	型式 Type+D形状+D-P
例如	ZJPRBTB6-8

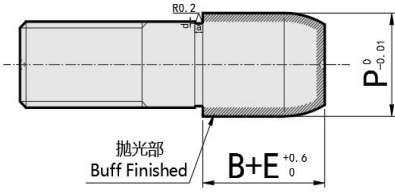
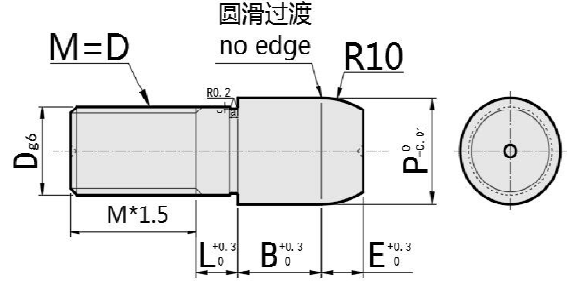
Part Number	Type+D shape+D-P
order	ZJPRBTB6-8

- 【!】导入部分适用公差P6。 【!】 Tolerance P6 only applies to the import part.
- 【!】退刀槽尺寸为参考值。 【!】 The size of the retreating groove is the reference value.
- D < 3 : a=0.5, d=D-0.1      D ≥ 3 : a=1, d=D-0.2

内螺纹型 / Internal thread



外螺纹型 / External thread



- 【!】 B尺寸与E尺寸界限不明显。
- 【!】 The boundary between B and E dimensions is indistinct.

材质对照表(Materials)				
型号Type	形状/Shape	材质Material	硬度Hardness	表面处理Surface Treatment
ZJPRB	内螺纹型 Internal thread TB	9CrWMn	60~63HRC	/
ZGJPRB		9CrWMn	50~55HRC	镀硬铬Hard Chrome Plating
ZSJPRB		SUS304	/	/
ZCJPRB		SUS420	50~55HRC	/
ZMJPRB		9CrWMn	60~63HRC	抛光Polishing
ZMGJPRB	外螺纹型 External thread NB	9CrWMn	60~63HRC	镀硬铬Hard Chrome Plating 抛光Polishing
ZMCJPRB		SUS420	50~55HRC	抛光Polishing

参数对照表(Specifications)									
型式Part Number									
Type	D形状/Shape	D	Dg6	P	L	B	E	M 粗牙螺纹/Coarse	l
(抛光/Polishing) ZJPRB ZGJPRB ZSJPRB ZCJPRB ZMJPRB ZMGJPRB ZMCJPRB	内螺纹型 Internal thread TB	6	-0.004	8 10	10	8	5	M3	5
		6T	-0.012	8 10	10	8	5	M2.5	4
		8	-0.005 -0.014	10 12 13	15	8	5	M5	8
		8T		10 12 13	15	8	5	M4	6
		10	12 13 15	15	10	5	M5	8	
		12	-0.006 -0.017	13 15 16	15	10	6	M5	8
		13		15 16	22	10	6	M8	12
		16	20 25	22	10	7	M8	12	
		20	-0.007 -0.02	25 30	30	15	7	M8	12

参数对照表(Specifications)									
型式Part Number									
Type	D形状/Shape	D	Dg6	P	L	B	E	M 粗牙螺纹/Coarse	
(抛光/Polishing) ZJPRB ZGJPRB ZSJPRB ZCJPRB ZMJPRB ZMGJPRB ZMCJPRB 适用于D≥5 Apply to D 5 or higher	外螺纹型 External thread NB	3	-0.002 -0.008	4 5 6	5	5	3	M3	
		4	-0.004 -0.012	5 6	5	6	4	M4	
		5		6 8	10	6	4	M5	
		6	8 10	10	8	5	M6		
		8	-0.005 -0.014	10 12 13	15	8	5	M8	
		10		12 13 15	15	10	5	M10	
		12	-0.006	13 15 16	15	10	6	M12	
		16	-0.017	20 25	22	10	7	M16	
		20	-0.007 -0.02	25 30	30	15	7	M20	



■ 大头圆锥标准型定位销

■ Small Head Locating Pin - Round Tapered Tip, Straight Shank

型号实例	型式 Type+D公差+D-P
例如	ZJPRS2-3

Part Number	Type+D tolerance+D-P
order	ZJPRS2-3

【!】导入部分适用公差m6、P6。

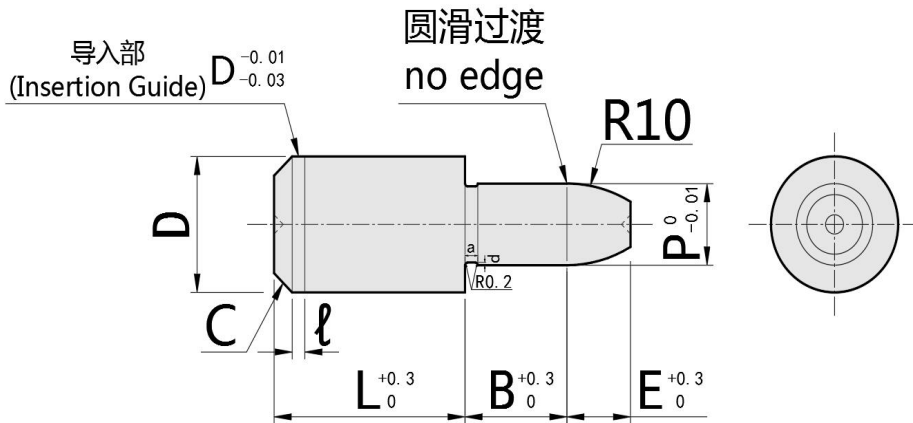
【!】Tolerance m6、P6 applies to the import part.

【!】退刀槽尺寸为参考值。

【!】The size of the retreating groove is the reference value.

D < 3 : a=0.5 , d=D-0.1

D ≥ 3 : a=1 , d=D-0.2



材质对照表(Materials)					
型号Type	D公差 D tolerance	材质 Material	硬度 Hardness	表面处理 Surface Treatment	
					ZJPRS
ZGJPRS	9CrWMn	50~55HRC	镀铬Hard Chrome Plating		
ZSJPRS	SUS304	/	/		
ZCJPRS	SUS420	50~55HRC	/		
ZMJPRS	B(m6)	9CrWMn	60~63HRC	抛光Polishing	
ZMGJPRS	PB(p6)	9CrWMn	60~63HRC	镀铬Hard Chrome Plating 抛光Polishing	
ZMCJPRS		SUS420	50~55HRC	抛光Polishing	

参数对照表(Specifications)											
Type	D公差 D tolerance	型式Part Number				L	B	C	E	l	
		D	Dm6	Dp6	P						
ZJPRS ZGJPRS ZSJPRS ZCJPRS  (抛光/Polishing) ZMJPRS ZMGJPRS ZMCJPRS 适用于D≥5 Apply to D 5 or higher	标准型 Standard	3	+0.008 +0.002	+0.012 +0.006	2 3	5	3	0.5	3	1	
		4	+0.012 0.004	+0.02 +0.012	2 3 4	5	3	1	3	1	
		5			2 3 4 5	10	5	1	3	1	
		6	3 4 5 6	10	5	1	4	1			
	B(m6)	8	+0.015	+0.024	4 5 6 8	15	6	1.5	5	1	
		10	+0.006	+0.015	6 8 10	15	8	2	5	1	
		PB(P6)	12	+0.018 +0.007	+0.029 +0.018	8 10 12	15	8	2	6	1
			13			12 13	22	8	2	6	2
			16	12 13 14 15 16	22	10	3	7	2		
			20	+0.021 +0.008	+0.035 +0.022	15 16 20	30	10	3	7	2



- 大头圆锥螺纹型定位销
- Small Head Locating Pin - Round Tapered Tip, Tapped Shank

型号实例	型式 Type+D形状+D-P
例如	ZJPRSTB6-8

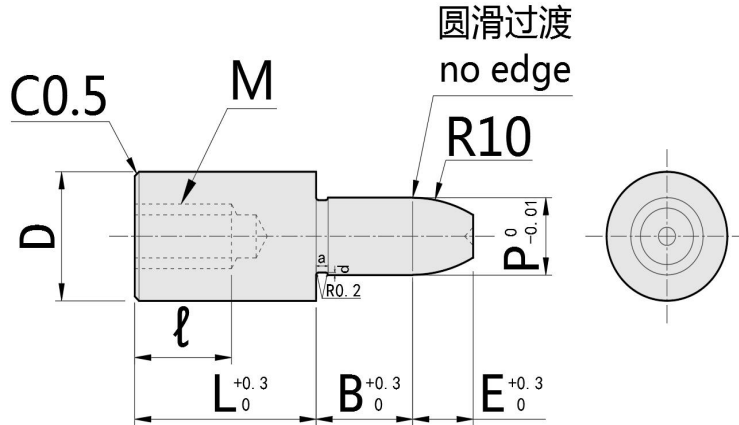
Part Number	Type+D shape+D-P
order	ZJPRSTB6-8

【!】退刀槽尺寸为参考值。

【!】The size of the retreating groove is the reference value.

$D < 3$  :  $a=0.5$  ,  $d=D-0.1$

$D \geq 3$  :  $a=1$  ,  $d=D-0.2$



材质对照表(Materials)				
型号Type	形状/Shape	材质Material	硬度Hardness	表面处理Surface Treatment
	ZJPRS	内螺纹型 Internal thread TB	9CrWMn	40~50HRC
ZGJPRS	9CrWMn		50~55HRC	镀硬铬Hard Chrome Plating
ZSJPRS	SUS304		/	/
ZCJPRS	SUS420		50~55HRC	/
ZMJPRS	9CrWMn		60~63HRC	抛光Polishing
ZMGJPRS	9CrWMn		60~63HRC	镀硬铬Hard Chrome Plating 抛光Polishing
ZMCJPRS	SUS420		50~55HRC	抛光Polishing

参数对照表(Specifications)													
Type	D形状/Shape	型式Part Number					L	B	M 粗牙螺纹/Coarse	ℓ	E		
		D	Dg6	P									
(抛光/Polishing) ZJPRS ZGJPRS ZSJPRS ZCJPRS ZMJPRS ZMGJPRS ZMCJPRS	内螺纹型 Internal thread TB	6	-0.004	4	5	6	10	8	M3	5	5		
		6T	-0.012	4	5	6	10	8	M2.5	4	5		
		8	-0.005 -0.014	6	8		15	8	M5	6	5		
		8T		6	8		15	8	M4	5	5		
		10		8	10		15	10	M5	8	5		
		12	-0.006 -0.017	8	10	12		15	10	M5	8	6	
		13		12	13		22	10	M8	12	6		
		16		12	13	14	15	16	22	10	M8	12	7
		20		-0.007 -0.02	15	16	20		30	15	M8	12	7



- 大头球面标准型定位销
- Large Head Locating Pin - Spherical Tip, Straight Shank

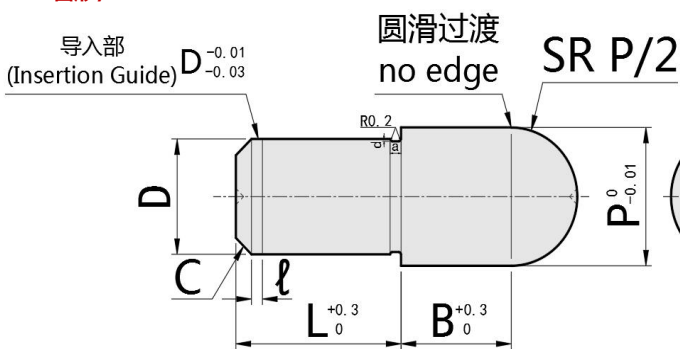
型号实例	型式 Type+D公差/形状+D-P
例如	ZJPQB2-3

Part Number	Type+D tolerance/shape+D-P
order	ZJPQB2-3

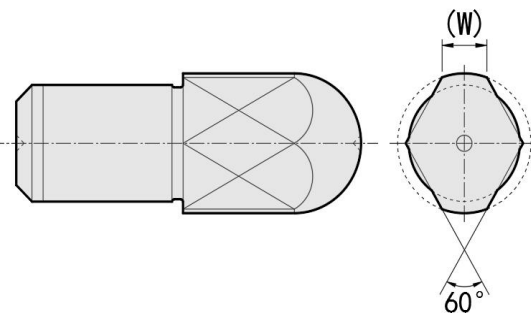
- 【!】导入部分适用公差P6。
- 【!】Tolerance P6 only applies to the import part.
- 【!】退刀槽尺寸为参考值。
- 【!】The size of the retreating groove is the reference value.

D < 3 : a=0.5 , d=D-0.1      D ≥ 3 : a=1 , d=D-0.2

圆形 / Round



多棱型 / Diamond



材质对照表(Materials)			
型号Type	D公差/形状 D tolerance/shape	材质 Material	硬度 Hardness
ZSJPQ	多棱型Diamond D(m6) PD(p6)	SUS304	/
ZCJPQ		SUS420	50~55HRC

参数对照表(Specifications)										
型式Part Number						L	B	C	l	(W)
Type	D公差/形状 D tolerance/shape	D	Dm6	Dp6	P					
ZJPQ ZSJPQ ZCJPQ	圆形Round B(m6) PB(p6)	2	+0.008	+0.012	3 4	4	3	0.5	0	1.2
		3	+0.002	+0.006	4 5 6	5	5	0.5	1	1.5
		4	+0.012 +0.004	+0.02 +0.012	5 6 7	5	6	1	1	1.8
	5	6 7 8			10	6	1	1	2.2	
	多棱型Diamond D(m6) PD(p6)	6	+0.015 +0.006	+0.024 +0.015	7 8 9 10	10	8	1	1	3
		8			9 10 11 12	15	8	1.5	1	3.5
10	12 13	15	10	2	1	4				





- 大头球面内螺纹型定位销
- Large Head Locating Pin - Spherical Tip, Tapped

型号实例	型式 Type+D形状+D-P
例如	ZJPQTB6-8

Part Number	Type+D shape+D-P
order	ZJPQTB6-8

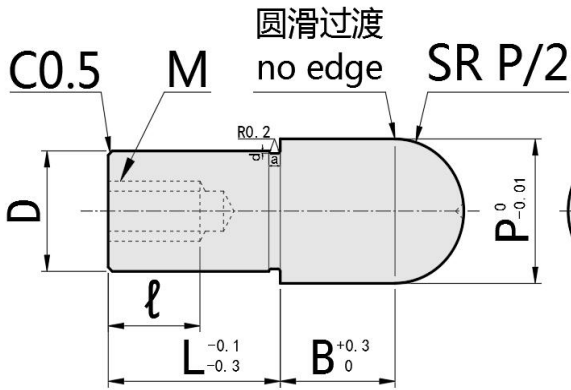
【!】退刀槽尺寸为参考值。

【!】The size of the retreating groove is the reference value.

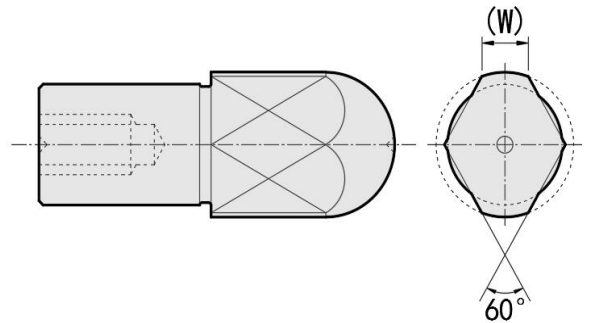
$D < 3$  :  $a=0.5$  ,  $d=D-0.1$

$D \geq 3$  :  $a=1$  ,  $d=D-0.2$

圆形 / Round



多棱型 / Diamond



材质对照表(Materials)			
型号Type	形状/Shape	材质Material	硬度Hardness
	ZJPQT	圆形Round BB	9CrWMn
ZSJPQT	SUS304		/
ZCJPQT	多棱型Diamond D	SUS420	50~55HRC

参数对照表(Specifications)												
Type	D形状/Shape	型式Part Number				L	B	M 粗牙螺纹/Coarse	ℓ	(W)		
		D	Dg6	P								
ZJPQT ZSJPQT ZCJPQT	圆形Round BB	6	-0.004 -0.012	7	8	9	10	10	8	M3	5	3
		8	-0.005 -0.014	9	10	11	12	13	15	8	M5	8
	多棱型Diamond D	10	-0.006 -0.017	11	12	13	15	15	10	M5	8	4
		12	-0.006 -0.017	15	16			15	10	M5	8	5
		16	-0.006 -0.017	18	19	20	24	25	22	10	M8	12



- 大头球面外螺纹型定位销
- Large Head Locating Pin - Spherical Tip, Threaded Shank

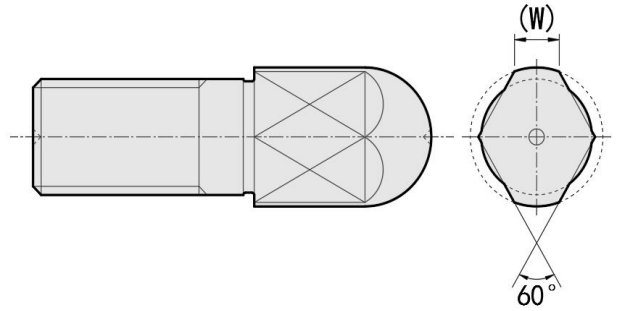
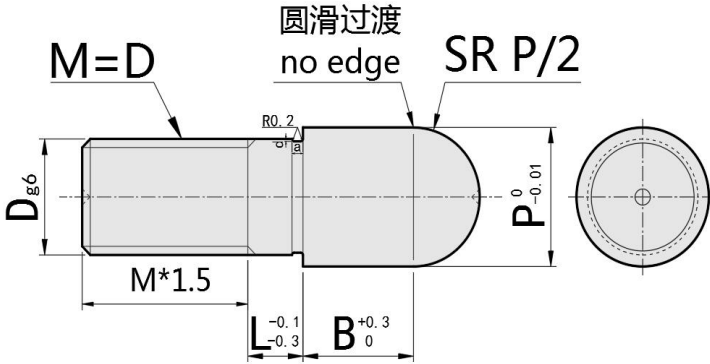
型号实例	型式 Type+D形状+D-P
例如	ZJPQNBB6-8

Part Number	Type+D shape+D-P
order	ZJPQNBB6-8

- 【!】退刀槽尺寸为参考值。
  - 【!】The size of the retreating groove is the reference value.
- D < 3 : a=0.5 , d=D-0.1      D ≥ 3 : a=1 , d=D-0.2

圆形 / Round

多棱型 / Diamond



材质对照表(Materials)			
型号Type	形状/Shape	材质Material	硬度Hardness
	ZJPQN	圆形Round BB	9CrWMn
ZSJPQN	多棱型Diamond D	SUS304	/
ZCJPQN		SUS420	50~55HRC

参数对照表(Specifications)													
Type	D形状/Shape	型式Part Number				L	B	M 粗牙螺纹/Coarse	ML	(W)			
		D	Dg6	P									
ZJPQN ZSJPQN ZCJPQN	圆形Round BB	3	-0.002 -0.08	4	5	6	2	5	M3	4.5	1.5		
		4	-0.004 -0.012	5	6	7	2	6	M4	6	1.8		
		5		6	7	8	3	6	M5	7.5	2.2		
	6	多棱型Diamond D	7	8	9	10	3	8	M6	9	3		
	8		-0.005	9	10	11	12	13	5	8	M8	12	3.5
	10		-0.014	11	12	13	15	5	10	M10	15	4	
12	-0.006 -0.017	15	16			8	10	M12	18	5			



- 小头球面标准型定位销
- Small Head Locating Pin - Spherical Tip, Straight Shank

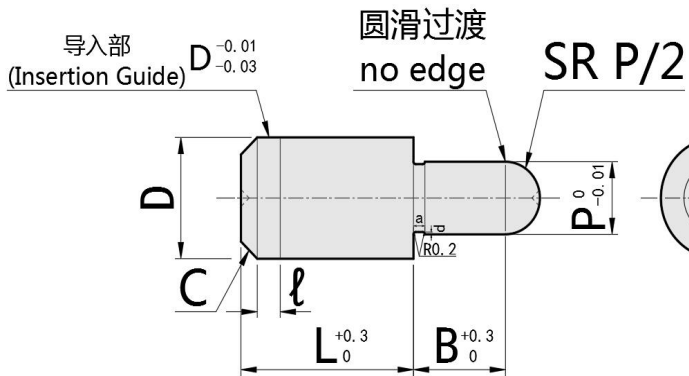
型号实例	型式 Type+D公差/形状+D-P
例如	ZJPQSB2-1.5

Part Number	Type+D tolerance/shape+D-P
order	ZJPQSB2-1.5

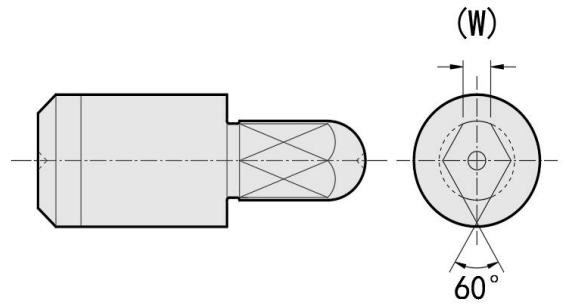
- 【!】导入部分适用公差m6、P6。
- 【!】Tolerance m6、P6 applies to the import part.
- 【!】退刀槽尺寸为参考值。
- 【!】The size of the retreating groove is the reference value.

D < 3 : a=0.5 , d=D-0.1      D ≥ 3 : a=1 , d=D-0.2

圆形 / Round



多棱型 / Diamond



材质对照表(Materials)			
型号Type	D公差/形状 D tolerance/shape	材质	硬度
		Material	Hardness
ZJPQ	圆形Round SB(m6) SPB(p6)	9CrWMn	60~63HRC
ZSJPQ		SUS304	/
ZCJPQ	多棱型Diamond SD(m6) SPD(p6)	SUS420	50~55HRC

参数对照表(Specifications)												
型式Part Number												
Type	D公差/形状 D tolerance/shape	D	Dm6	Dp6	P			L	B	C	l	(W)
ZJPQ	圆形Round SB(m6) SPB(p6)	2	+0.008	+0.012	1	1.5		4	2	0.3	0	/
		3	+0.002	+0.006	2			5	3	0.5	1	/
ZSJPQ	多棱型Diamond SD(m6) SPD(p6)	4	+0.012	+0.02	2	3		5	3	1	1	1
ZCJPQ		5			2	3	4		10	5	1	1
		6	+0.004	+0.012	2	3	4	5	10	5	1	1



- 小头球面内螺纹型定位销
- Small Head Locating Pin - Spherical Tip, Tapped Shank

型号实例	型式 Type+D形状+D-P
例如	ZJPQSTB6-8

Part Number	Type+D shape+D-P
order	ZJPQSTB6-8

【!】退刀槽尺寸为参考值。

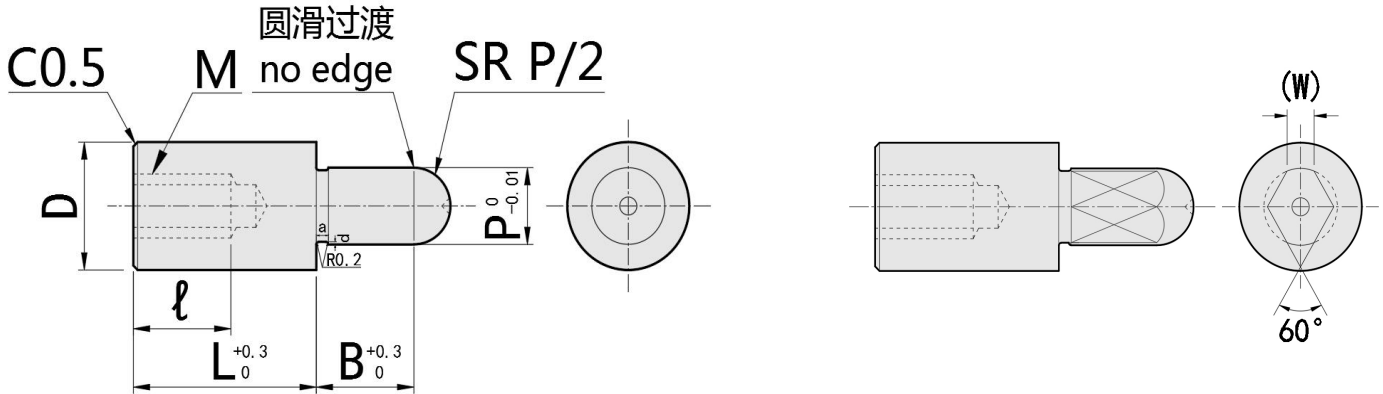
【!】The size of the retreating groove is the reference value.

$D < 3$  :  $a=0.5$  ,  $d=D-0.1$

$D \geq 3$  :  $a=1$  ,  $d=D-0.2$

圆形 / Round

多棱型 / Diamond



材质对照表 (Materials)			
型号 Type	形状/Shape	材质 Material	硬度 Hardness
	ZJPQS		
ZSJPQS	多棱型 Diamond TD	SUS304	/

参数对照表 (Specifications)									
型式 Part Number					L	B	M 粗牙螺纹/Coarse	l	(W)
Type	D形状/Shape	D	Dg6	P					
ZJPQS ZSJPQS	圆形 Round TB	6	-0.004 -0.012	4 5	10	5	M3	5	1.5
		8	-0.005 -0.014	6 7	15	6	M5	8	1.8
	多棱型 Diamond TD	10	-0.006 -0.017	7 8	15	8	M5	8	2.2
		13		8 10	22	8	M8	10	3
		16		10	22	10	M8	12	4

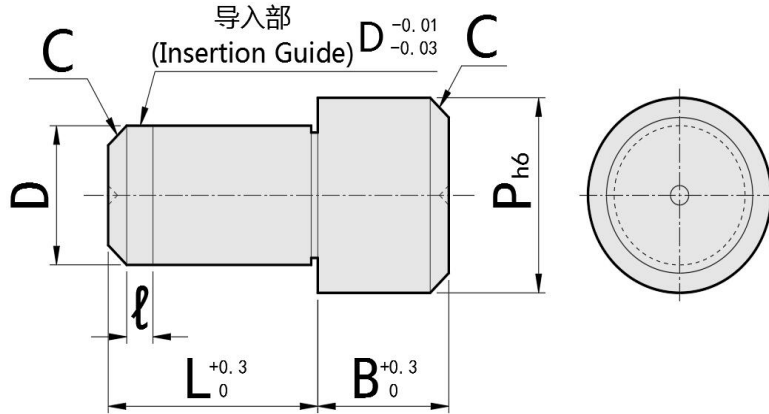


■ 大平头内螺纹型定位销

■ Large Head Locating Pin - Flat Tip, Straight Shank

型号实例	型式 Type+D公差+D-P
例如	ZJPDA2-3

Part Number	Type+D tolerance+D-P
order	ZJPDA2-3



材质对照表(Materials)				
型号Type	D公差 D tolerance	材质 Material	硬度 Hardness	表面处理
				Surface Treatment
ZJP	DA(m6)  DPA(P6)	9CrWMn	40~50HRC	/
ZGJP		9CrWMn	50~55HRC	镀硬铬Hard Chrome Plating
ZBJP		9CrWMn	/	/
ZSJP		SUS304	/	/
ZHJP		SUS304	镀层硬度750HV~ Plating Hardness: 750 HV min.	镀硬铬 Hard Chrome Plating
ZCJP		SUS420	50~55HRC	/

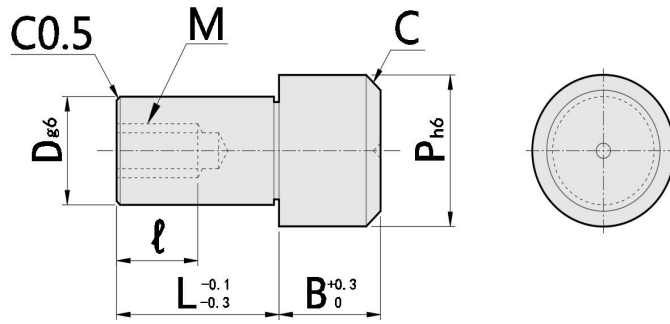
参数对照表(Specifications)										
Type	D公差 D tolerance	型式Part Number				L	B	l	C	
		D	Dm6	Dp6	P					
ZJP ZGJP ZBJP ZSJP ZHJP ZCJP	DA(m6)	2	+0.008	+0.012	3	4	2	0	0.5	
		3	+0.002	+0.006	5	5	3	1	1	
		4	+0.012 0.004	+0.02 +0.012	6	8	5	3	1	1
		5			8	8	4	1	1	
		6	8	10	10	5	1	1		
		8	+0.015	+0.024	12	12	6	2	1.5	
	DPA(P6)	10	+0.006	+0.015	12	14	16	10	2	2
		12	+0.018 +0.007	+0.029 +0.018	16	20	20	2	2	
		13			18	22	22	2	2	
		16	+0.021 +0.008	+0.035 +0.022	25	24	25	2	3	
		20			30	32	30	2	3	



- 大平头内螺纹型定位销
- Large Head Locating Pin - Flat Tip, Straight Shank

型号实例	型式 Type+D-P
例如	ZJPDTA6-8

Part Number	Type+D-P
order	ZJPDTA6-8



材质对照表(Materials)			
型号 Type	材质 Material	硬度 Hardness	表面处理 Surface Treatment
ZJPDTA	9CrWMn	40~50HRC	/
ZGJPDTA	9CrWMn	50~55HRC	镀硬铬Hard Chrome Plating
ZSJPDTA	SUS304	/	/
ZCJPDTA	SUS420	50~55HRC	/

参数对照表(Specifications)								
型式Part Number				L	B	M 粗牙螺纹/Coarse	ℓ	C
Type	D	Dg6	P					
ZJPDTA ZGJPDTA ZSJPDTA ZCJPDTA	6	-0.004 -0.012	8 10	10	5	M3	5	1
	8	-0.005	12	12	6	M5	8	1.5
	10	-0.014	12 14	16	10	M5	8	2
	12	-0.006 -0.017	16	20	20	M5	8	2
	13		18	22	22	M8	12	3
	16	25	24	25	M8	12	3	
20	-0.007 -0.02	30	32	30	M8	12	3	

【!】退刀槽尺寸为参考值。

【!】The size of the retreating groove is the reference value.

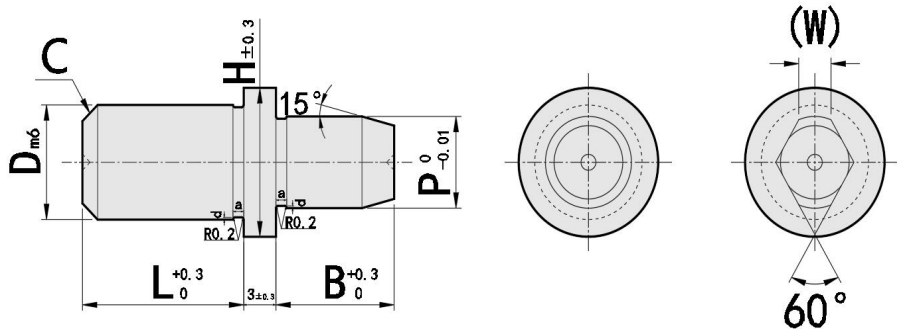
D < 3 : a=0.5, d=D-0.1      D ≥ 3 : a=1, d=D-0.2



- 锥角肩型定位销
- Shouldered Locating Pin - Tapered Tip, Straight Shank

型号实例	型式 Type+D形状+D-P
例如	ZJPJB2-2

Part Number	Type+D shape+D-P
order	ZJPJB2-2



材质对照表(Materials)			
型号 Type	形状/Shape	材质 Material	硬度 Hardness
	ZJP		
ZSJP	多棱型Diamond DJ	SUS304	/

参数对照表(Specifications)										
型式Part Number					L	B	C	m	H	(W)
Type	D形状/Shape	D	Dm6	P						
ZJP ZSJP	圆形 Round JB	2	+0.008	1 2	4	2	0.5	0.5	6	/
		3	+0.002	2 3 4	5	2	0.5	1	6	1
		4	+0.012 0.004	2 3 4 5	5	3	1	1	6	1.2
		5		3 4 5 6	10	5	1	2	8	1.5
		6		4 5 6	10	5	1	2	8	1.8
		8		5 6 8	15	6	1.5	3	11	2.2
	10	+0.006	8 10	15	8	2	3	13	3	
	12	+0.018 +0.007	8 10 12	15	8	2	3	15	3.2	
	13		8 10 12 13	22	8	2	4	16	3.5	
	16		13 14 15 16	22	10	3	4	19	4	
20	+0.021 +0.008		16 20	30	10	3	5	23	5.5	

【!】退刀槽尺寸为参考值。

【!】The size of the retreating groove is the reference value.

D < 3 : a=0.5, d=D-0.1

D ≥ 3 : a=1, d=D-0.2



- 内螺纹锥角肩型定位销
- Shouldered Locating Pin - Tapered Tip, Tapped Shank

型号实例	型式 Type+D形状+D-P
例如	ZJPUB6-6

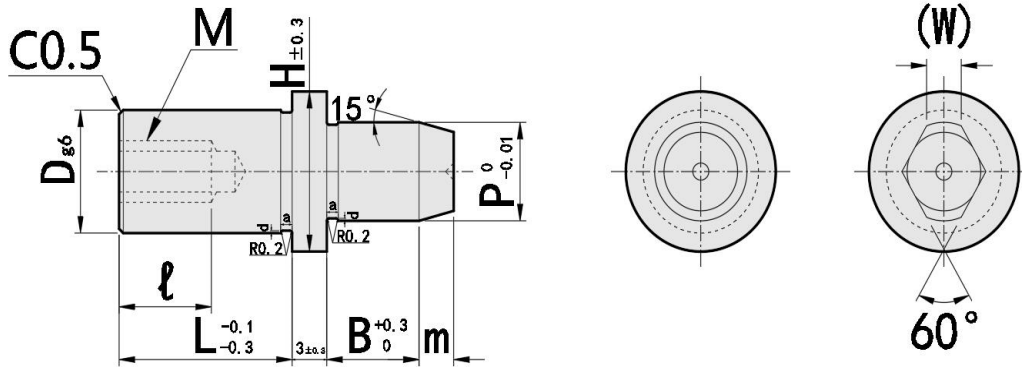
Part Number	Type+D shape+D-P
order	ZJPUB6-6

【!】退刀槽尺寸为参考值。

【!】The size of the retreating groove is the reference value.

$D < 3$  :  $a=0.5$  ,  $d=D-0.1$

$D \geq 3$  :  $a=1$  ,  $d=D-0.2$



材质对照表(Materials)			
型号Type	形状/Shape	材质Material	硬度Hardness
	ZJP		
ZSJP	多棱型Diamond DU	SUS304	/

参数对照表(Specifications)																
Type	D形状/Shape	型式Part Number				L	B	M 粗牙螺纹/Coarse	D	ℓ	m	H	(W)			
		D	Dg6	P												
ZJP ZSJP	圆形Round UB	5		3	4	5	6	10	5	M2	6	3	2	8	1.5	
		6	-0.004	4	5	6		10	5	M3	6	5	2	8	1.8	
		6T	-0.012	4	5	6		10	5	M2.5	6	4	2	8	1.8	
		8	-0.005	5	6	8		15	6	M5	8	8	3	11	2.2	
		8T	-0.014	5	6	8		15	6	M4	8	6	3	11	2.2	
	多棱型Diamond UD	10		8	10			15	8	M5	10	8	3	13	3	
		12	-0.006	8	10	12		15	8	M5	12	8	3	15	3.2	
		13	-0.017	8	10	12	13		22	8	M8	13	10	4	16	3.5
		16		13	14	15	16		22	10	M8	16	12	4	19	4
		20	-0.007 -0.02	16	20				30	10	M8	20	12	5	23	5.5

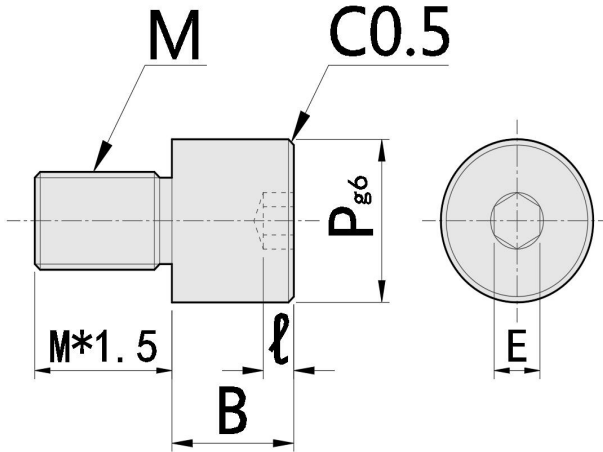


■ 内六角孔型记号销

■ Large Head Marker Pin - Flat Tip with Hex Socket, Full Threaded Shank

型号实例	型式 Type+M-P-B
例如	ZJPLR3-5-6.5

Part Number	Type+M-P-B
order	ZJPLR3-5-6.5



材质对照表(Materials)			
型号 Type	材质 Material	硬度 Hardness	表面处理 Surface Treatment
ZJPLR	S45C	/	/
ZJPLRM	S45C	/	镀镍Nickel Plating
ZJPLRK	S45C	50~55HRC	/
ZJPLRS	SUS304	/	/

P尺寸公差 P Tolerance	
P/0.1mm	g6
5.0~6.0	-0.004 -0.012
6.1~10.0	-0.005 -0.014
10.1~15.0	-0.006 -0.017

参数对照表(Specifications)					
型式Part Number				ℓ	E
Type	M	P/0.1mm	B/0.1mm		
ZJPJR ZJPLRM ZJPLRK ZJPLRS	3	5.0~7.0	6.5~10.0	2	2
	4	5.0~8.0	6.5~10.0	2	2.5
	5	6.0~12.0	6.5~10.0	2	3
	6	6.5~15.0	6.5~12.0	2	3
	8	8.5~15.0	7.5~12.0	2.5	4
10	10.5~15.0	8.5~12.0	3	5	

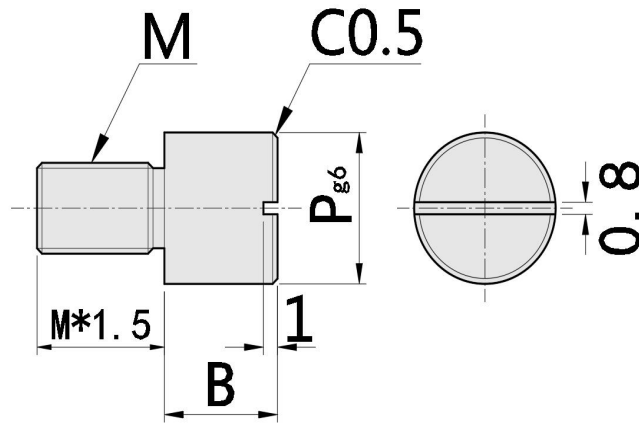


■ 一字槽型记号销

■ Marker Pin - Large Head, Flat Tip with Flatted Slot, Threaded Shank

型号实例	型式 Type+M-P-B
例如	ZJPLB3-5-6.5

Part Number	Type+M-P-B
order	ZJPLB3-5-6.5



材质对照表(Materials)			
型号 Type	材质 Material	硬度 Hardness	表面处理 Surface Treatment
ZJPLB	S45C	/	/
ZJPLBM	S45C	/	镀镍Nickel Plating
ZJPLBK	S45C	50~55HRC	/
ZJPLBS	SUS304	/	/

P尺寸公差 P Tolerance	
P/0.1mm	g6
5.0~6.0	-0.004 -0.012
6.1~10.0	-0.005 -0.014
10.1~15.0	-0.006 -0.017

参数对照表(Specifications)			
型式Part Number			
Type	M	P/0.1mm	B/0.1mm
ZJPJB ZJPLBM ZJPLBK ZJPLBS	2	3.0~5.0	5.0~10.0
	3	3.5~7.0	2.0~10.0
	4	4.5~8.0	2.0~10.0
	5	5.5~12.0	2.0~10.0
	6	6.5~15.0	2.0~12.0
	8	8.5~15.0	2.0~12.0
10	10.5~15.0	2.0~12.0	