

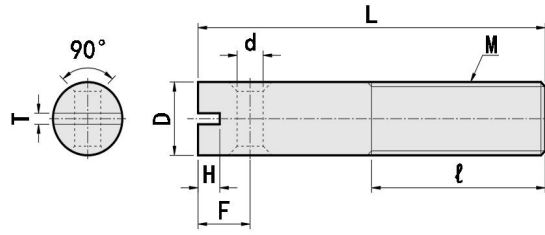


- 拉伸弹簧用支柱 孔型
- Spring Anchors - Wrench Flats

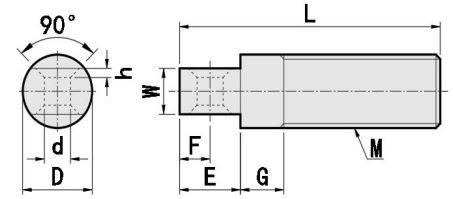
型号实例	型式 Type+D-L
例如	ZASPO3-10

Part Number	Type+D-L
order	ZASPO3-10

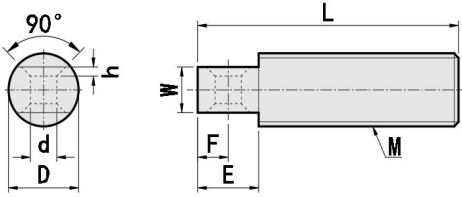
ZASPO / ZSASPO



ZAIPO / ZSAIPO



ZAIPPOZ / ZSAIPPOZ



材质对照表 (Materials)			
型号 Type	材质 Material	表面处理 Surface Treatment	附件 Nut
ZASPO	S45C	发黑Black Oxide	Black Nut 1 PCS
ZSASPO	SUS303	/	SUS304 Nut 1 PCS
ZAIPPO	S45C	发黑Black Oxide	Black Nut 1 PCS
ZSAIPPO	SUS303	/	SUS304 Nut 1 PCS
ZAIPPOZ	S45C	发黑Black Oxide	Black Nut 1 PCS
ZSAIPPOZ	SUS303	/	SUS304 Nut 1 PCS

参数对照表(Specifications)																
		型式Part Number							M	ℓ	F	H	T	d		
Type	D	L														
ZASPO ZSASPO	3	10	15	20	25	30	35	40	3*0.5	10	3	1	1.2	1.5		
	4	15	20	25	30	35	40	50	4*0.7	10	3	1	1.2	2		
	5	15	20	25	30	35	40	50	5*0.8	10	5	2	1.2	2		
	6	20	25	30	35	40	45	50	60	6*1.0	16	5	2	1.2	2	
	8	20	25	30	35	40	45	50	60	70	M8*1.25	20	6	2.5	1.2	3
	10	30	35	40	45	50	60	70		M10*1.5	25	7	2.5	1.2	4	
	12	40	50	60	70					M12*1.75	30	9	2.5	1.8	6	

参数对照表(Specifications)																
		型式Part Number							M	d	W	G	E	F	h	
Type	D	L														
ZAIPPO ZSAIPPO	3	10	15	20	25	30	35	40	3*0.5	1.5	1.5	3	3	1.5	0.2	
	4	15	20	25	30	35	40	50	4*0.7	1.5	2.5	5	3.5	1.75	0.3	
	5	15	20	25	30	35	40	50	5*0.8	2	3	5	4	2	0.4	
	6	20	25	30	35	40	45	50	60	6*1.0	2	3.5	5	5	2.5	0.5
	8	20	25	30	35	40	45	50	60	70	M8*1.25	3	5	7	3.5	1
	10	30	35	40	45	50	60	70		M10*1.5	4	6	10	4	1.2	
	12	35	40	50	60	70				M12*1.75	5	7	5	12	5	1.4

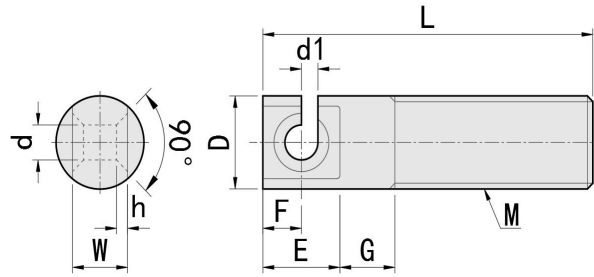
参数对照表(Specifications)															
		型式Part Number							M	d	W	E	F	h	
Type	D	L													
ZAIPPOZ ZSAIPPOZ	3	10	15	20	25				3*0.5	1.5	1.5	3	1.5	0.2	
	4	10	15	20	25	30			4*0.7	1.5	2.5	3.5	1.75	0.3	
	5	10	15	20	25	30	35		5*0.8	2	3	4	2	0.4	
	6	15	20	25	30	35	45		6*1.0	2	3.5	5	2.5	0.5	
	8	15	20	25	30	35	45	55	65	M8*1.25	3	5	7	3.5	1
	10	25	30	35	45	55	65			M10*1.5	4	6	10	4	1.2
	12	45	55	65						M12*1.75	5	7	12	5	1.4



- 开口孔型拉伸弹簧用支柱
- Spring Anchors - Wrench Flats, with

型号实例	型式 Type+D-L
例如	ZAIPOK4-15

Part Number	Type+D-L
order	ZAIPOK4-15



材质对照表 (Materials)			
型号 Type	材质 Material	表面处理 Surface Treatment	附件 Nut
ZAIPOK	S45C	发黑Black Oxide	Black Nut 1 PCS
ZSAIPOK	SUS303	/	SUS304 Nut 1 PCS

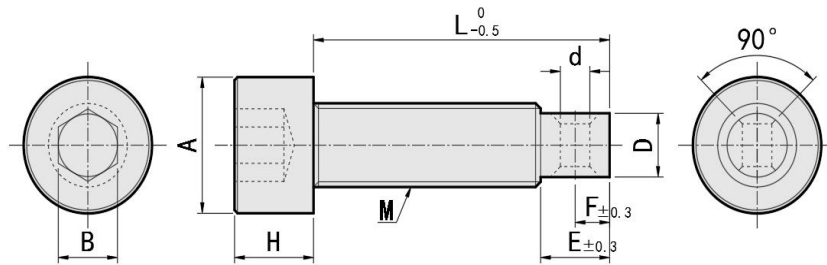
参数对照表(Specifications)															
		型式Part Number													
Type	D	L													
ZAIPOK ZSAIPOK	4	15	20	25	30	M4	d	d1	W	G	E	F	h		
	5	15	20	25	30	40	M5	2	1	3	5	4	2	0.4	
	6	20	25	30	40	50	M6	2	1	3.5	5	5	2.5	0.5	
	8	25	30	40	50	60	70	M8	3	1.5	5	5	7	3.5	1
	10	30	40	50	60	70	M10	4	2	6	5	10	4	1.2	
	12	40	50	60	70	M12	5	2.5	7	5	12	5	1.4		



- 拉伸弹簧用支柱 内六角螺栓型
- Spring Anchors - Socket Head Cap Screw

型号实例	型式 Type+M-L
例如	ZARPO4-15

Part Number	Type+M-L
order	ZARPO4-15



材质对照表 (Materials)			
型号 Type	材质 Material	表面处理 Surface Treatment	附件 Nut
ZARPO	S45C	发黑Black Oxide	Black Nut 1 PCS
ZSARPO	SUS303	/	SUS304 Nut 1 PCS

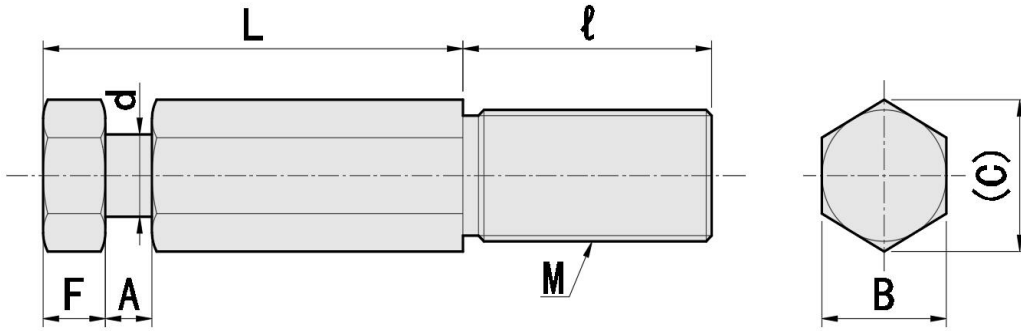
参数对照表(Specifications)														
		型式Part Number												
Type	M	L												
ZARPO ZSARPO	4	15	20	25	30	d	D	E	F	A	B	H		
	5	15	20	25	30	35	40	2	3.8	4	2	8.5	4	5
	6	20	25	30	35	40	2	4.5	4	2	10	5	6	
	8	20	25	30	35	40	50	3	6.1	7	3.5	13	6	8
	10	30	35	40	50	60	4	7.8	10	4	16	8	10	
	12	40	50	60	5	9.5	12	5	18	10	12			



- 拉伸弹簧用支柱 六角型
- Spring Anchors - Hexagonal

型号实例	型式 Type+B-L
例如	ZDSPO3-10

Part Number	Type+B-L
order	ZDSPO3-10



材质对照表 (Materials)		
型号 Type	材质 Material	表面处理 Surface Treatment
ZDSPO	SUM22	发黑Black Oxide
ZPDSPO	SUM22	镀镍Nickel Plating

参数对照表(Specifications)												
Type	B	型式Part Number				M	(C)	l	A	F	d	
		L										
ZDSPO ZPDSPO	3	10	15			M3	3.5	6	1	3	1.8	
	4	10	15	20		M4	4.6	8	1.2	3	2	
	5	10	15	20		M5	5.8	10	2	4	3	
	6	10	15	20	25		M6	6.9	12	3	4	3.6
	8	10	15	20	25	30	M8	9.2	16	3	4	5
	10	15	20	25	30		M10	11.5	20	3	4	6
	12	20	25	30			M12	13.9	24	4	4	6.5



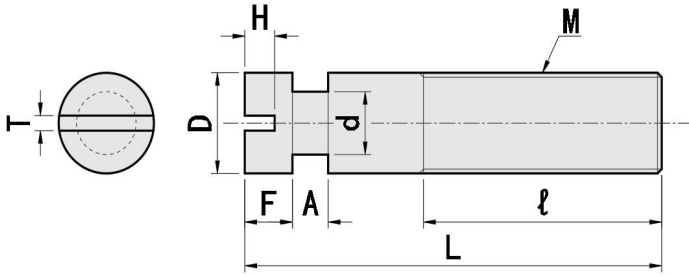
■ 拉伸弹簧用支柱 沟槽型

■ Spring Anchors - Flat Head Screwdriver Type, with Groove

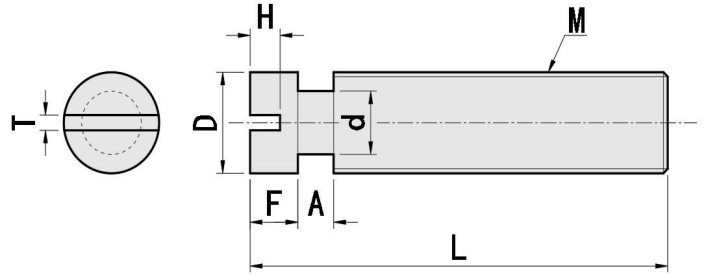
型号实例	型式 Type+D-L
例如	ZBSPO3-15

Part Number	Type+D-L
order	ZBSPO3-15

ZBSPO / ZBSBPO



ZBSPOZ / ZBSBPOZ



材质对照表 (Materials)			
型号 Type	材质 Material	表面处理 Surface Treatment	附件 Nut
ZBSPO	S45C	发黑Black Oxide	Black Nut 1 PCS
ZBSBPO	SUS303	/	SUS304 Nut 1 PCS
ZBSPOZ	S45C	发黑Black Oxide	Black Nut 1 PCS
ZBSBPOZ	SUS303	/	SUS304 Nut 1 PCS

参数对照表(Specifications)																	
		型式Part Number						M	ℓ	A	F	H	T	d			
Type	D	L															
ZBSPO ZBSBPO	3	15	20	25	30	35	40	M3	10	1	3	1	1.2	1.8			
	4	15	20	25	30	35	40	50	M4	10	1.2	3	1	1.2	2		
	5	15	20	25	30	35	40	50	M5	10	2	4	2	1.2	3		
	6	15	20	25	30	35	40	45	50	60	M6	16	3	4	2	1.2	3.6
	8	20	25	30	35	40	45	50	60	70	M8	20	3	4	2.5	1.2	5
	10	30	35	45	50	60	70				M10	25	3	4	2.5	1.2	6
12	40	50	60	70						M12	30	4	4	2.5	1.8	6.5	

参数对照表(Specifications)														
		型式Part Number						M	A	F	H	T	d	
Type	D	L												
ZBSPOZ ZBSBPOZ	3	10	15	20	25			M3	1	3	1	1.2	1.8	
	4	10	15	20	25	30		M4	1.2	3	1	1.2	2	
	5	15	20	25	30	35		M5	2	4	2	1.2	3	
	6	20	25	30	35	45		M6	3	4	2	1.2	3.6	
	8	25	30	35	45	55	65		M8	3	4	2.5	1.2	5
	10	30	35	45	55	65			M10	3	4	2.5	1.2	6
12	35	45	55					M12	4	4	2.5	1.8	6.5	

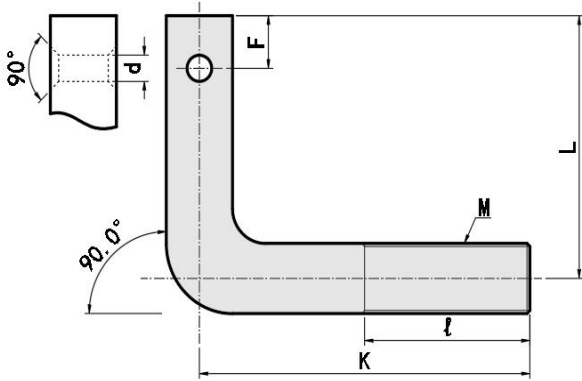


- 拉伸弹簧用支柱 L型
- Spring Anchors - L-Shaped, Hole

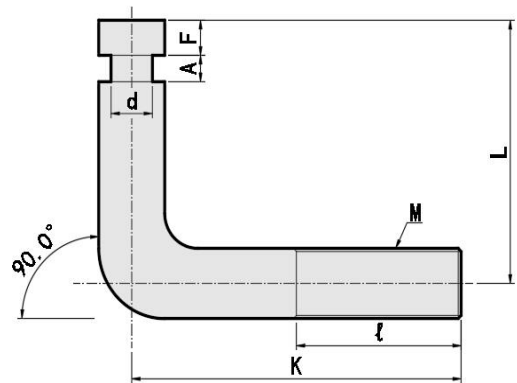
型号实例	型式 Type+D-L
例如	ZASPL3-10

Part Number	Type+D-L
order	ZASPL3-10

ZASPL / ZSASPL



ZBSPL / ZBSBSPL



材质对照表 (Materials)			
型号 Type	材质 Material	表面处理 Surface Treatment	附件 Nut
ZASPL	S45C	发黑Black Oxide	Black Nut 1 PCS
ZSASPL	SUS303	/	SUS304 Nut 1 PCS
ZBSPL	S45C	发黑Black Oxide	Black Nut 1 PCS
ZBSBSPL	SUS303	/	SUS304 Nut 1 PCS

参数对照表(Specifications)												
型式Part Number		M	K	l	A	F		d				
Type	D					L	ZASPL/ZSASPL	ZBSPL/ZBSBSPL	ZASPL/ZSASPL	ZBSPL/ZBSBSPL		
ZASPL ZSASPL	3	10	15	M3	20	10	1	3	1.5	1.5	1.8	
	4	15	20	25	M4	20	10	1.2	3	3	2	2
	5	20	25	30	M5	20	10	2	5	4	2	3
ZBSPL ZBSBSPL	6	20	25	30	M6	30	16	3	5	4	2	3.6
	8	25	30		M8	40	20	3	6	4	3	5
	10	30	40		M10	50	25	3	7	4	4	6
	12	30	40		M12	60	30	4	9	4	6	6.5

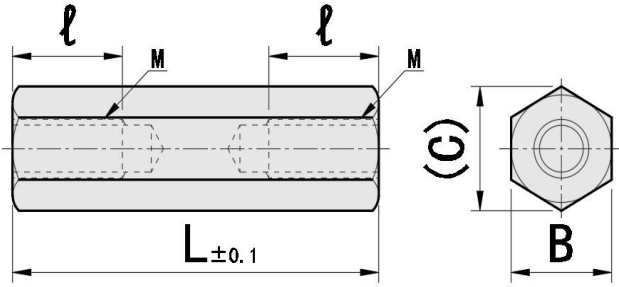


- 小径六角形支柱一端外螺纹一端内螺纹型
- Small Diameter Hex Posts - Both Ends Tapped

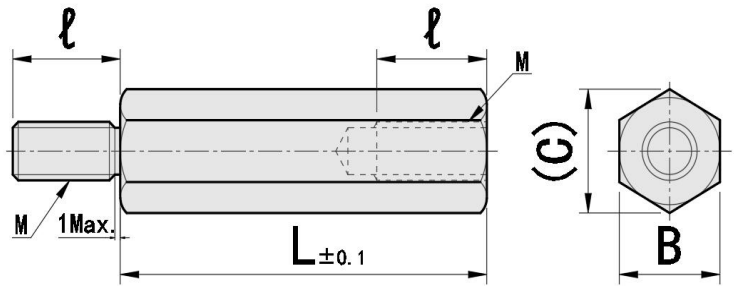
型号实例	型式 Type+B-L
例如	ZBSLCB4-5

Part Number	Type+B-L
order	ZBSLCB4-5

ZBSLCB / ZPSLCB / ZSLCB



ZBSLCG / ZPSLCG / ZSLCG



材质对照表 (Materials)			
型号Type		材质 Material	表面处理 Surface Treatment
两端内螺纹 Both Ends Tapped	一端外螺纹一端内螺纹 One End Threaded, One End Tapped		
ZBSLCB	ZBSLCG	SUJ2	发黑Black Oxide
ZPSLCB	ZPSLCG	SUJ2	镀镍Nickel Plating
ZSLCB	ZSLCG	SUS303	/

参数对照表(Specifications)																									
Type		型式Part Number											M	ℓ	(C)										
B	L	5	6	7	8	9	10	15	20	5	6	8				9	10	11	12	13	14	15	16	17	18
ZBSLCB	4	5	6	7	8	9	10	15	20	M2	5	4.6													
ZPSLCB	5	5	6	8	9	10	15	20		M2.5	5	5.8													
ZBSLCG	5.5	5	6	8	9	10	11	12	13	14	15	16	17	18	20	M3	6	6.3							

[!] B尺寸4/5仅SLCB/SLCG适用。

[!] B Size 4/5 is suitable for SLCB/SLCG only.

[!] 两端内螺纹型L≤MX6时，底孔可能会贯通。

[!] When the internal thread L≤MX6 at both ends, the bottom hole may be through.

[!] 一端外螺纹一端内螺纹型，L尺寸为5时，内螺纹ℓ尺寸为3；L尺寸为6时，内螺纹ℓ尺寸为4。

[!] One male one female, for 5 L size, the internal thread ℓ size is 3; L size is 6, internal thread ℓ size 4.

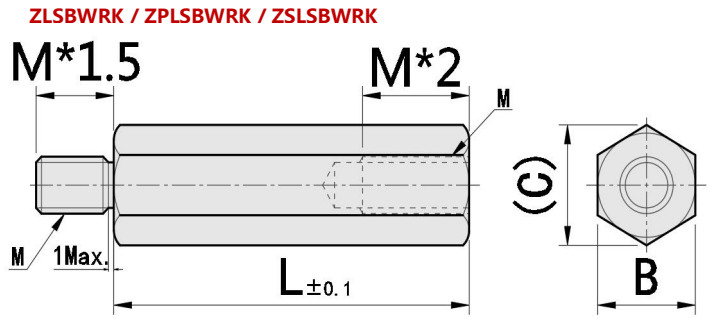
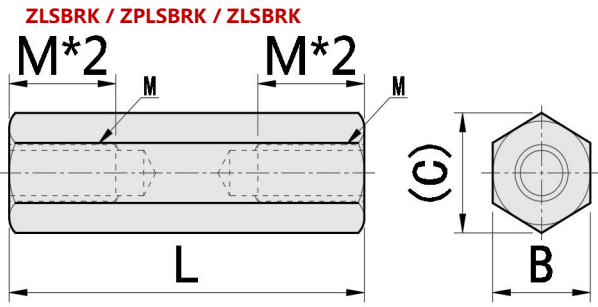


■ 小径六角形支柱一端外螺纹一端内螺纹型

■ Hex Posts - Both Ends Tapped

型号实例	型式 Type+B-L
例如	ZLSBRK6-15

Part Number	Type+B-L
order	ZLSBRK6-15



材质对照表 (Materials)			
型号Type		材质 Material	表面处理 Surface Treatment
两端内螺纹 Both Ends Tapped	一端外螺纹一端内螺纹 One End Threaded, One End Tapped		
ZLSBRK	ZLSBWRK	SUJ2	发黑Black Oxide
ZPLSBRK	ZPLSBWRK	SUJ2	镀镍Nickel Plating
ZLSBRK	ZLSBWRK	SUS303	/

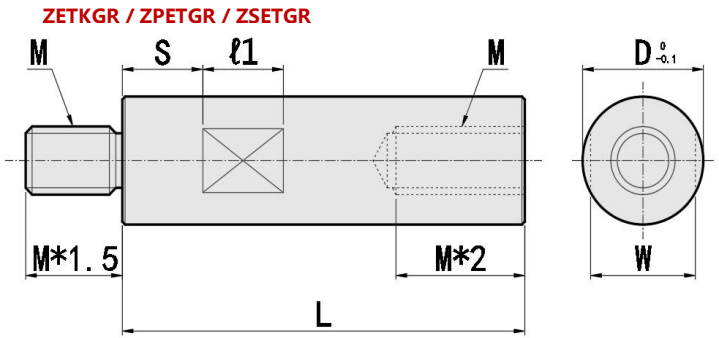
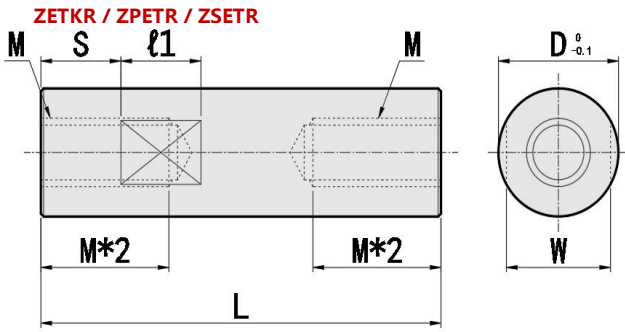
参数对照表(Specifications)																				
Type	B	型式Part Number										M	(C)							
		L																		
ZLSBRK ZPLSBRK ZLSBRK	6	15	20	25	30	35	40	45	50				M3	6.9						
	7	20	25	30	35	40	45	50	60	70	80	90	100	110	120	130	140	150	M4	8.1
	8	20	25	30	35	40	45	50	60	70	80	90	100	110	120	130	140	150	200	M5
ZLSBWRK ZPLSBWRK ZLSBWRK	10	25	30	35	40	45	50	60	70	80	90	100	110	120	130	140	150	200	M6	11.5
	12	25	30	35	40	45	50	60	70	80	90	100	110	120	130	140	150	200	M6	13.9
	13	35	40	45	50	60	70	80	90	100	110	120	130	140	150	200			M8	15
	14	35	40	45	50	60	70	80	90	100	110	120	130	140	150	200			M8	16.2
	17	40	45	50	60	70	80	90	100	110	120	130	140	150	200				M10	19.6
	19	50	60	70	80	90	100	110	120	130	140	150	200						M12	21.9



- 圆形支柱 两端内螺纹型
- Circular Posts - Both Ends Tapped with Standard Wrench Flat

型号实例	型式 Type+D-L
例如	ZETKR6-15

Part Number	Type+D-L
order	ZETKR6-15



材质对照表 (Materials)			
型号Type		材质 Material	表面处理 Surface Treatment
两端内螺纹 Both Ends Tapped	一端外螺纹一端内螺纹 One End Threaded, One End Tapped		
ZETKR	ZETKGR	SUJ2	发黑Black Oxide
ZPETR	ZPETGR	SUJ2	镀镍Nickel Plating
ZSETR	ZSETGR	SUS303	/

参数对照表(Specifications)																								
Type		型式Part Number													M	S	W	l1						
		D	L																					
ZETKR ZPETR ZSETR	ZETKGR ZPETGR ZSETGR	6	15	20	25	30	35	40	45	50									M3	3.5	5	8		
		8	20	25	30	35	40	45	50	60	70	80	90	100	110	120	130	140	150	200	M4	6	7	8
		10	20	25	30	35	40	45	50	60	70	80	90	100	110	120	130	140	150	200	M5	6	8	8
		12	25	30	35	40	45	50	60	70	80	90	100	110	120	130	140	150	200	M6	7.5	10	10	
		15	35	40	45	50	60	70	80	90	100	110	120	130	140	150	200				M8	10	13	10
		20	40	45	50	60	70	80	90	100	110	120	130	140	150	200				M10	15	17	10	

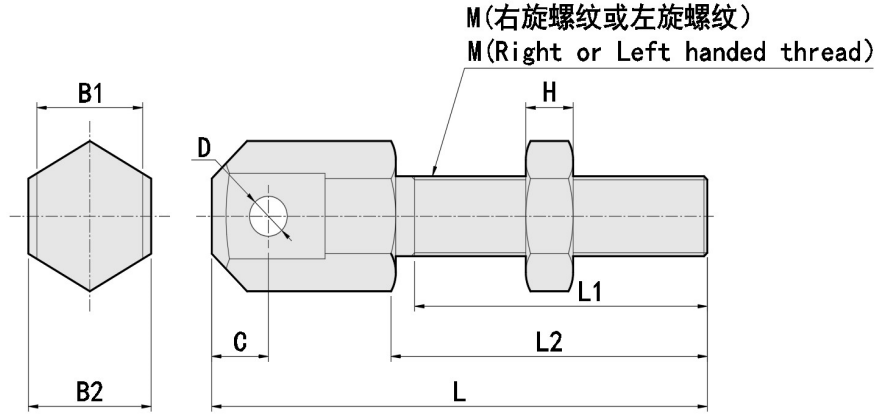


■ 连接杆零件

■ Turnbuckle Components - Chain Fastener, Standard, Long

型号实例	型式 Type + 公称尺寸
例如	ZSRC-R15

Part Number	Type + Nominal size
order	ZSRC-R15



材质对照表 (Materials)						
型号Type			零件 Parts	材质 Material	硬度 Hardness	表面处理 Surface Treatment
标准型Standard		加长型Long				
右螺纹 Right-Hand Thread	左螺纹 Left-Hand Thread	右螺纹 Right-Hand Thread				
ZSRC-R	ZSRC-L	ZLSRC-R	主体Body	S45C	35~40HRC	发黑Black Oxide
ZSRC-R	ZSRC-L	ZLSRC-R	螺帽Nut	SS400	/	发黑Black Oxide
ZSRCS-R	ZSRCS-L	/	主体Body	SUS303	/	/
ZSRCS-R	ZSRCS-L	/	螺帽Nut	SUS304	/	/

参数对照表(Specifications)												
型式Part Number		M	L1	L2	L	C	D	B1	B2	H	最大负载kN Max. Load (kN)	
Type	适用滚轮链条公称尺寸 Applicable Roller Chain										SRC-R/L	SRCS-R/L
ZSRC-R ZSRC-L ZSRCS-R ZSRCS-L	15	3	10	12	20.6	2.2	1.7	3.4	6	1.8	0.44	/
	25*	4	16.5	18	28.2	3	2.4	4.8	7	2.4	0.78	0.68
	35*	6	23.5	25	40	4.5	3.7	7.4	10	3.6	1.96	1.57
	40*	8	31	33	52.5	6	4	11.2	13	5	3.53	2.84
	50*	10	39	41	65	7.5	5.2	13.8	17	6	5.68	4.51
	60	12	47	49	78	9	6	17.8	19	7	8.23	6.57
	80	16	57	60	98	12	8	22.6	24	10	15.4	12.3

[!] SRCS-R没有公称尺寸15。SRCS-L仅为带*符号的尺寸。

[!] 15 is not available for SRCS-R. SRCS-L is available for sizes marked with * only.

参数对照表(Specifications)											
型式Part Number		M	L1	L2	L	C	D	B1	B2	H	最大负载kN Max. Load (kN)
Type	适用滚轮链条公称尺寸 Applicable Roller Chain										
ZLSRC-R	25	6	35	38	48.2	3	2.4	4.8	7	3.6	1.96
	35	8	50	54	69	4.5	3.7	7.4	10	5	3.53
	40	10	60	64.5	84	6	4	11.2	13	6	5.68
	50	12	65	71	95	7.5	5.2	13.8	17	7	8.23
	60	16	100	106	135	9	6	17.8	19	10	15.4
	80	20	119	127	165	12	8	22.6	24	12	26.1

[!] 请一并确认组合链条的容许张力。

[!] Please check the Allowable Tension of the paired chain.