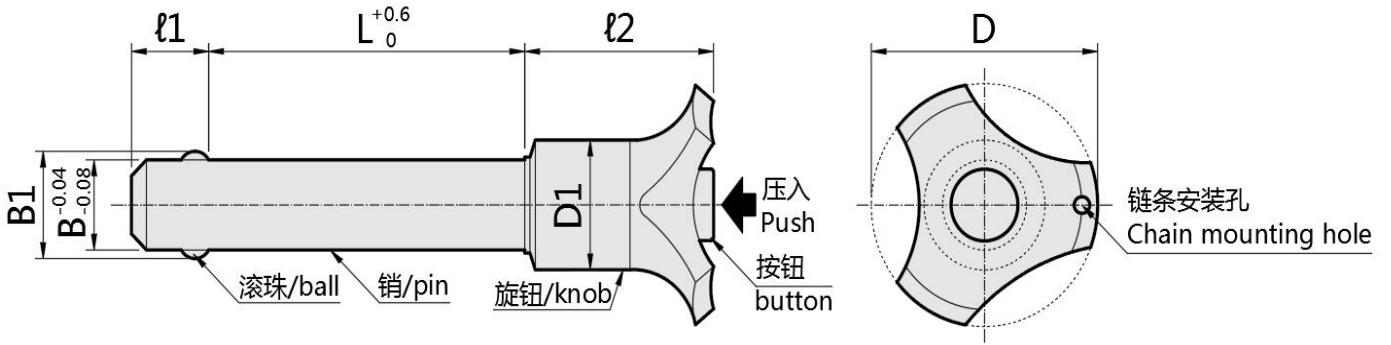




- 顶出式球头锁紧销
- Ball Lock Pins - Push Pin

型号实例	型式 Type+B-L
例如	Z BLP 5-10

Part Number	Type+B-L
order	Z BLP 5-10



材质对照表 (Materials)						
型号Type	滚珠Ball		销Pin		弹簧Spring	旋钮Knob
	材质Material	硬度Hardness	材质Material	硬度Hardness	材质Material	材质Material
ZBLP	SUS440C	55HRC~	SUS303	/	SUS304	尼龙6 Nylon 6

参数对照表 (Specifications)																
Type	型式Part Number						D	D1	B1	l1	l2	配套孔建议尺寸 Mating Hole Recommended Dimensions		销部剪切负载 (KN) Shear Load		
	B	L														
ZBLP	5	10	15	20	25	30	38	16	5.5	6	31.5	5	0~+0.07	24		
	6	10	15	20	25	30	40	50	38	16	7	7	31.5	6	0~+0.07	35
	8	20	25	30	40	50	38	16	9.5	8	31.5	8	0~+0.09	63		
	10	25	30	40	50	60	43	23	12	9	36	10	0~+0.09	100		
	12	40	50	60	80	43	23	14.5	10	36	12	0~+0.11	144			
	16	60	80	100	43	23	19	14	36	16	0~+0.11	257				

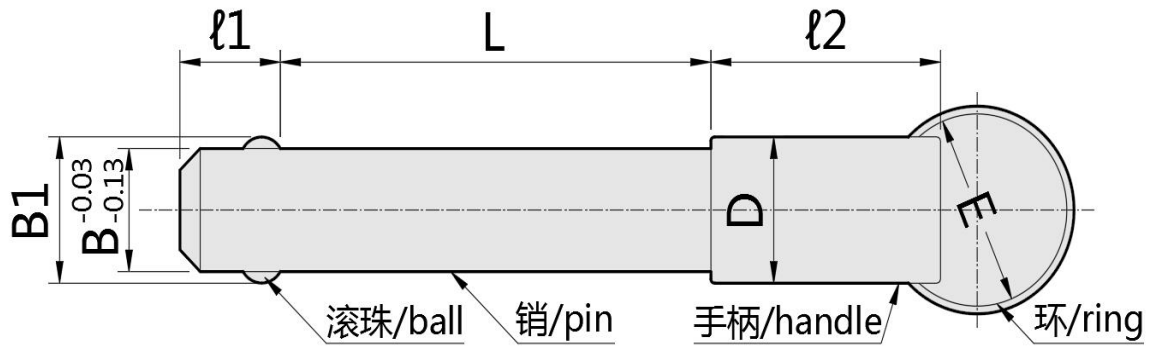


■ 球头锁紧销 弹簧型

■ Ball Lock Pins - Spring Type

型号实例	型式 Type+ B - L
例如	Z BLPS 5-30

Part Number	Type+ B - L
order	Z BLPS 5-30



材质对照表 (Materials)									
型号Type		滚珠Ball		销Pin		手柄Handle		弹簧Spring	环Ring
L尺寸选择型 L Selectable	L尺寸指定型 L Configurable	材质 Material	硬度 Hardness	材质 Material	表面处理 Surface Treatment	材质 Material	表面处理 Surface Treatment	材质 Material	材质 Material
ZBLPS	ZBLPS	SUS440C	HRC55~	S45C	镀镍 Nickel Plating	SUM22	镀镍 Nickel Plating	SUS304	SUS304

► L尺寸选择型 / L Selectable

参数对照表(Specifications)											
型式Part Number			B1	l1	D	l2	E	配套孔建议尺寸 Mating Hole Recommended Dimensions		拆装时阻力 (N) Resistance when Removed (N)	销部剪切负载 (KN) Shear Load
Type	B	L									
ZBLPS	5	30	5.5	6	11	22	25	5	0~+0.07	9	5
	6	25 30 40 50	7	7	11	22	25	6	0~+0.07	9	7
	8	25 30 40 50	9.5	8	11	22	25	8	0~+0.09	9	13
	10	25 30 40 50 60	12	9	16	27	25	10	0~+0.09	20	20
	12	60	14.5	10	16	27	25	12	0~+0.11	30	29
	16	60 80 100	19	14	19	32	25	16	0~+0.11	50	51

► L尺寸指定型 / L Configurable

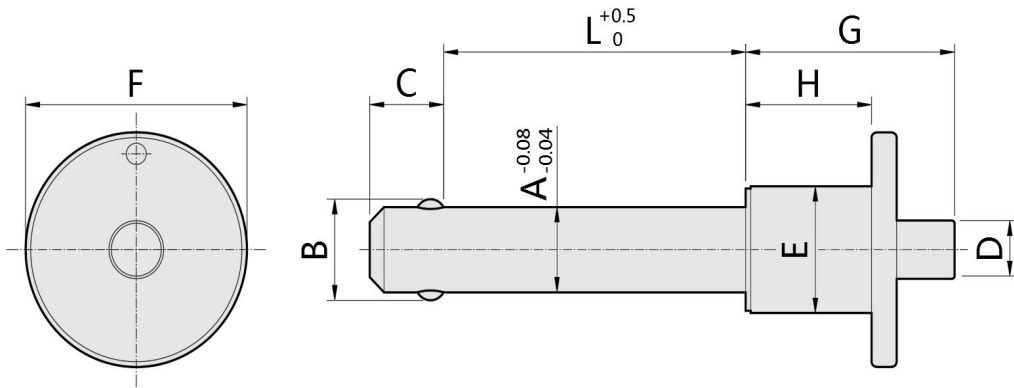
参数对照表(Specifications)											
型式Part Number			B1	l1	D	l2	E	配套孔建议尺寸 Mating Hole Recommended Dimensions		拆装时阻力 (N) Resistance when Removed (N)	销部剪切负载 (KN) Shear Load
Type	B	L (指定单位5mm) (5mm Increment)									
ZBLPF	5	10 ~ 30	5.5	6	11	22	25	5	0~+0.07	9	5
	6	15 ~ 50	7	7	11	22	25	6	0~+0.07	9	7
	8	20 ~ 100	9.5	8	11	22	25	8	0~+0.09	9	13
	10	25 ~ 100	12	9	16	27	25	10	0~+0.09	20	20
	12	30 ~ 100	14.5	10	16	27	25	12	0~+0.11	30	29
	16	50 ~ 100	19	14	19	32	25	16	0~+0.11	50	51



- 球头锁紧销
- Ball Lock Pins

型号实例	型式 Type+ A - L
例如	Z BLPSS 5-30

Part Number	Type+ A - L
order	Z BLPSS 5-30



材质对照表 (Materials)								
型号 Type	滚珠Ball		销Pin		弹簧Spring	旋钮Knob	按钮Button	环Ring
	材质 Material	硬度 Hardness	材质 Material	硬度 Hardness	材质 Material	材质 Material	材质 Material	材质 Material
ZBLPSS	SUS440C	55HRC~	SUS303	/	SUS304	SUS303	SUS303	SUS304

参数对照表(Specifications)															
Type	型式Part Number						B	C	D	E	F	G	H		
	A	L													
ZBLPSS	5	10	15	20	25	30	5.6	6	5.9	11.8	20	22.1	15		
	6	10	15	20	25	30	40	50	7	7	5.9	11.8	20	22.1	15
	8	20	25	30	40	50	9.5	8	5.9	11.8	20	22.9	15		
	10	25	30	40	50	60	11.9	9	5.9	14.5	28	30	19		
	12	40	50	60	80	14.5	10	7.9	19	34	35.9	25			
	16	65	70	75	80	19	15	10.9	23.8	44	41.5	25			
	20	75	80	85	90	24	17	10.9	23.8	44	41.5	27			
	25	85	90	95	100	31	22	17.9	31.8	53	54.4	37.2			