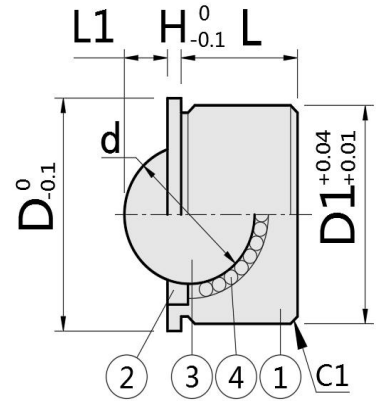
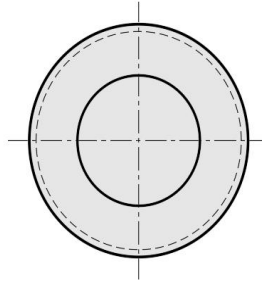




- 压入式钢珠滚轮
- Ball Rollers - Press Fit

型号实例	型式 Type+D1
例如	ZBCHA24

Part Number	Type+D1
order	ZBCHA24



材质对照表 (Materials)				
型号 Type	材质Material			
	①主体 Main Body	②调整环 Spacer	③主球 Main Ball	④副球 Sub Ball
ZBCHA	SUS304	SUS304	SUS440C	SUS440C
ZBCHAJ	SUS304	SUS304	SUS440C	SUS440C (HRC55~)

参数对照表 (Specifications)								
型式 Type	Part Number D1	D	L	H	L1	d	耐负载/load N(kgf)	
							ZBCHA	ZBCHAJ
ZBCHA (440C珠) ZBCHAJ (POM珠)	7.5	9	4	1	1.1	4	12(1.2)	6(0.6)
	9	11	5	1	1.2	4.76	14(1.4)	7(0.7)
	11	13	6	1	1.5	5.56	41(4.2)	27(2.8)
	15	17	9	1	2.5	8.73	55(5.6)	34(3.5)
	18	20	10	1	3.5	10.32	62(6.3)	55(5.6)
	24	26	14	1.5	5.3	15.87	343(35)	69(7)
30	32	17	2	6.3	19.05	412(42)	82(8.4)	

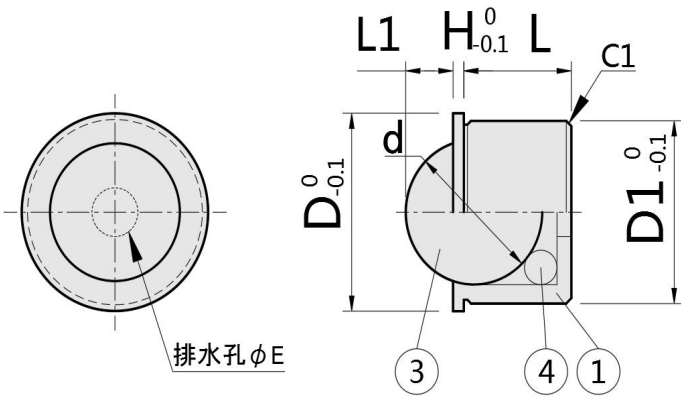
【!】建议压入型的安装孔采用H7公差。

【!】The H7 tolerance is recommended for the mounting holes of the press in type.

- 压入式钢珠滚轮
- Ball Rollers - Press Fit

型号实例	型式 Type+D1
例如	ZBCHJJ24

Part Number	Type+D1
order	ZBCHJJ24

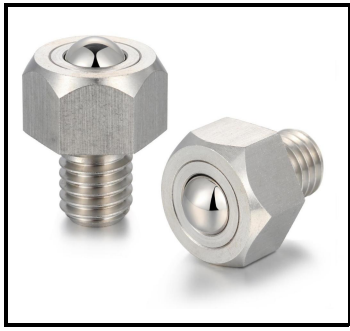


材质对照表 (Materials)				
型号 Type	材质Material			
	①主体 Main Body	②调整环 Spacer	③主球 Main Ball	④副球 Sub Ball
ZBCHJJ	聚缩醛Polyacetal	/	聚缩醛Polyacetal	SUS440C
ZBCHJP	PEEK	/	PEEK	SUS440C (HRC55~)

参数对照表 (Specifications)												
型式 Type	Part Number D1	D	L	H	L1		d		E	C	耐负载load N(kgf)	
					ZBCHJJ	ZBCHJP	ZBCHJJ	ZBCHJP			ZBCHJJ	ZBCHJP
ZBCHJJ (聚缩醛) ZBCHJP (PEEK)	7	9	4	1	1.5	1.5	4.76	4.76	1.5	0.8	2(0.2)	2(0.2)
	9	11	5	1	1.7	2	5.56	6.35	2.5	1	4(0.4)	5(0.5)
	11	13	7	1	/	2.5	/	7.94	3	1	/	6(0.6)
	13	15	8	1	2.8	3	8.73	9.53	3.5	1	7(0.7)	8(0.8)
	15	17	8	1	3.5	/	10.32	/	3.5	1	11(1.1)	/
	20	22	11.5	1.5	5.2	/	15.87	/	5.3	1	14(1.4)	/
24	26	15	1.5	6.6	/	19.05	/	6.4	1	21(2.1)	/	

【!】插入、粘接型不可用压入方式，请用粘接安装。(否则可能会导致滚动不良。)

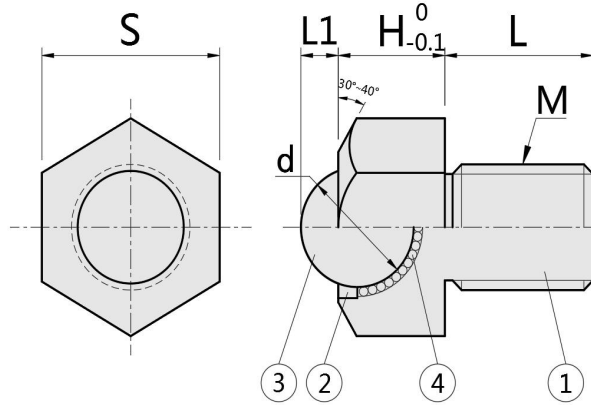
【!】Insert and bond type can not be pressed in, please use adhesive installation. (otherwise, poor rolling may be caused.)



- 外六角螺栓型钢珠滚轮
- Ball Rollers - Hex Head, Stud Type

型号实例	型式 Type+M
例如	ZBCHL16

Part Number	Type+M
order	ZBCHL16



材质对照表 (Materials)				
型号 Type	材质Material			
	①主体 Main Body	②调整环 Spacer	③主球 Main Ball	④副球 Sub Ball
ZBCHL	SUS304	SUS304	SUS440C	SUS440C (HRC55~)
ZBCHLJ	SUS304	SUS304	SUS440C	SUS440C (HRC55~)

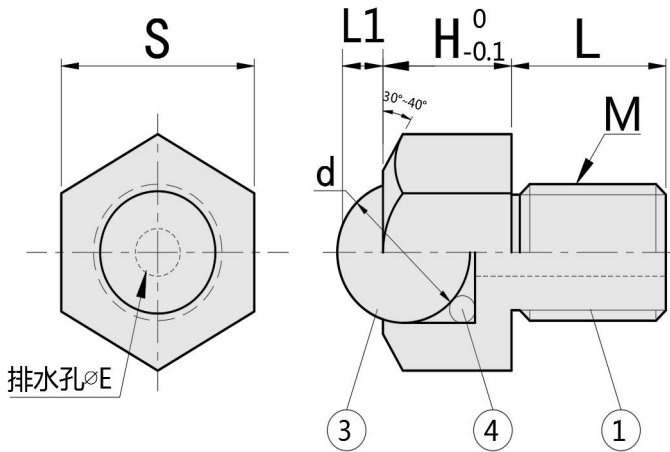
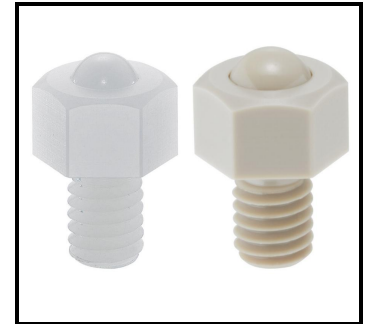
参数对照表(Specifications)									
型式 Type	Part Number	L	L1	H	d	S	耐负载/load N(kgf)		
							ZBCHL	ZBCHLJ	
ZBCHL (440C珠) ZBCHLJ (POM珠)	5	6	1.1	5	4	8	12(1.2)	6(0.6)	
	6	8	1.2	6	4.76	10	14(1.4)	7(0.7)	
	8	10	1.5	7	5.56	13	41(4.2)	27(2.8)	
	10	12	2.5	10	8.73	17	55(5.6)	34(3.5)	
	12	15	3.5	11	10.3	19	62(6.3)	55(5.6)	
	16	20	5.3	15	15.9	24	343(35)	69(7)	
20	25	6.3	18	19.1	30	412(42)	82(8.4)		

[!] 滚珠向上使用 [!] The ball is used upward

- 外六角螺栓型钢珠滚轮
- Ball Rollers - Hex Head, Stud Type

型号实例	型式 Type + M
例如	ZBCHLJJ10

Part Number	Type + M
order	ZBCHLJJ10



材质对照表 (Materials)				
型号 Type	材质Material			
	①主体 Main Body	②调整环 Spacer	③主球 Main Ball	④副球 Sub Ball
ZBCHLJJ	聚缩醛Polyacetal	/	聚缩醛Polyacetal	SUS440C (HRC55~)
ZBCHLJP	PEEK	/	PEEK	

参数对照表(Specifications)											
型式 Type	Part Number	L	L1		H	d		S	E	耐负载/load N(kgf)	
			ZBCHLJJ	ZBCHLJP		ZBCHLJJ	ZBCHLJP			ZBCHLJJ	ZBCHLJP
ZBCHLJJ (POM)	5	6	1.5	/	5	4.76	/	8	1.5	2(0.2)	/
	6	8	1.7	2	6	5.56	6.35	10	2.5	4(0.4)	5(0.5)
ZBCHLJP (PEEK)	8	10	2.8	2.5	8	8.73	7.94	13	3	7(0.7)	6(0.6)
	10	12	3.5	3	10	10.32	9.53	17	3.5	11(1.1)	8(0.8)

[!] ZBCHLJJ不用于高速搬运。

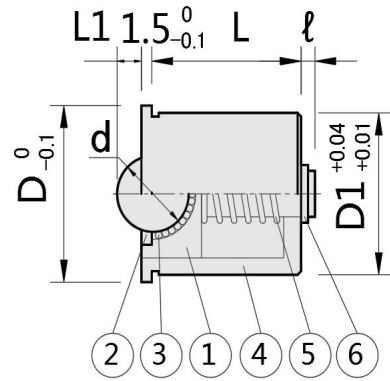
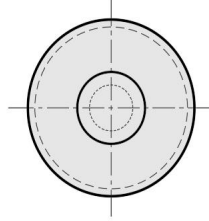
[!] ZBCHLJJ is not suitable for high-speed transfer.



- 带柱塞功能球头柱塞钢珠滚轮
- Press Fit Plunger Ball Rollers

型号实例	型式 Type + D1
例如	ZBCHP14

Part Number	Type + D1
order	ZBCHP14



材质对照表 (Materials)						
型号 Type	①主体 Main Body	②调整环 Spacer	③钢珠 Ball	④壳体 Casing	⑤弹簧 Spring	⑥扣环 Retaining Ring
ZBCHP	SUS304	SUS304	SUS440C	SUS304	SUS304	SUS304

参数对照表 (Specifications)								
型式 Part Number		D	L	L1	d	l	负载量/load(N)	
Type	D1						min.	max.
ZBCHP	14	16	14	1.5	5.56	1.5	23	30
	18	20	17	2.5	8.73	2	24	38
	22	24	21.5	3.5	10.32	2.5	24	55

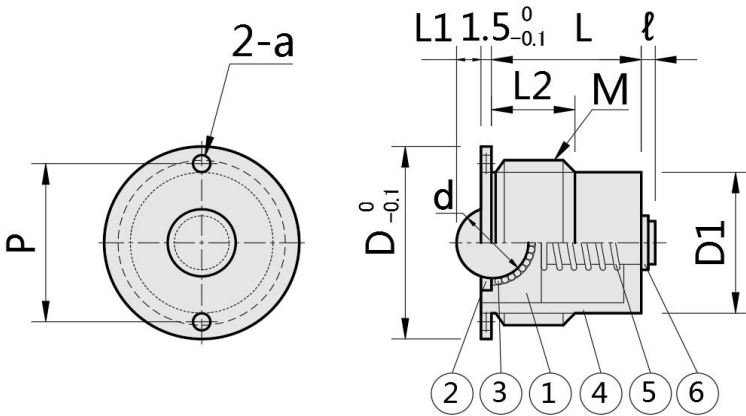
[!] 建议配套孔采用H7公差

[!] H7 is recommended for mounting holes

- 带柱塞功能螺纹型钢珠滚轮
- Press Fit Plunger Ball Rollers

型号实例	型式 Type + M
例如	ZBCHPT16

Part Number	Type + M
order	ZBCHPT16



材质对照表 (Materials)						
型号 Type	①主体 Main Body	②调整环 Spacer	③钢珠 Ball	④壳体 Casing	⑤弹簧 Spring	⑥扣环 Retaining Ring
ZBCHPT	SUS304	SUS304	SUS440C	SUS304	SUS304	SUS304

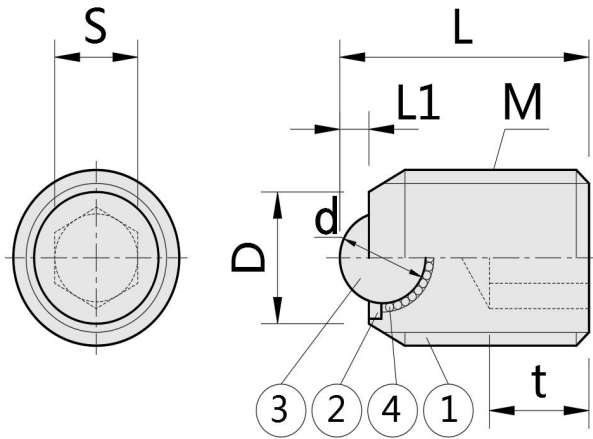
参数对照表 (Specifications)													
型式 Part Number		细牙螺纹 Fine Thread	D	D1	L	L1	L2	a	d	P	l	负载量/load(N)	
Type	M											min.	max.
ZBCHPT	16	M16*1.5	19	13.5	14	1.5	9	2	5.56	15.4	1.5	23	30
	20	M20*1.5	24	16.5	17	2.5	10	2	8.73	18.5	2	24	38
	24	M24*1.5	28	20.5	21.5	3.5	12	2.5	10.3	24	2	24	55



- 螺丝固定型钢珠滚轮
- Ball Rollers with Set Screw

型号实例	型式 Type + M
例如	ZBCSB 16

Part Number	Type + M
order	ZBCSB 16



材质对照表 (Materials)				
型号 Type	材质Material			
	①主体 Main Body	②调整环 Spacer	③主球 Main Ball	④副球 Sub Ball
ZBCSB	SUS304	SUS304	SUS440C	SUS440C
ZBCSBJ	SUS304	SUS304	聚缩醛Polyacetal	(HRC55~)

参数对照表(Specifications)									
型式Part Number		L	L1	D	d	S	t	耐负载/load N(kgf)	
Type	M							ZBCSB	ZBCSBJ
ZBCSB (不锈钢球)	6	12	0.9	3.5	3.18	3	3.5	2(0.2)	0.5(0.05)
	8	14	1.3	5	4.76	4	5	5(0.5)	1(0.1)
ZBCSBJ (聚缩醛球)	10	16	1.2	7	4.76	5	6	14(1.4)	7(0.7)
	12	20	1.5	8	5.56	6	8	41(4.2)	27(2.8)
	16	25	2.5	12	8.73	8	10	55(5.6)	34(3.5)
	20	30	3.5	15	10.32	10	12	62(6.3)	55(5.6)

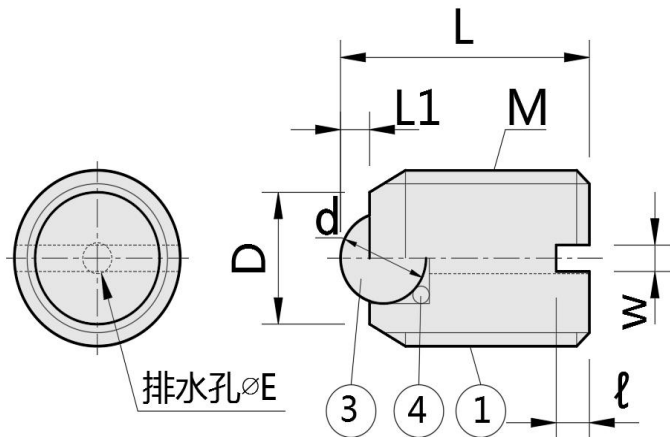
【!】规格为M8以铆接主球形式加工而不使用调整环②

【!】size M8 main balls are awaged in place without a spacer②

- 螺丝固定型钢珠滚轮
- Ball Rollers with Set Screw

型号实例	型式 Type + M
例如	ZBCSBJJ16

Part Number	Type + M
order	ZBCSBJJ16



材质对照表 (Materials)				
型号 Type	材质Material			
	①主体 Main Body	②调整环 Spacer	③主球 Main Ball	④副球 Sub Ball
ZBCSBJJ	聚缩醛Polyacetal	-	聚缩醛Polyacetal	SUS440C

参数对照表(Specifications)									
型式Part Number		L	L1	D	d	E	W	l	耐负载/load N(kgf)
Type	M								
ZBCSBJJ (POM)	8	14	1.5	6	4.76	1.5	1.2	1.5	2(0.2)
	10	16	1.7	8	5.56	2.5	1.5	2	4(0.4)
	16	25	2.8	12	8.73	3	2	3	7(0.7)
	20	30	3.5	14	10.3	3.5	3	4	11(1.1)



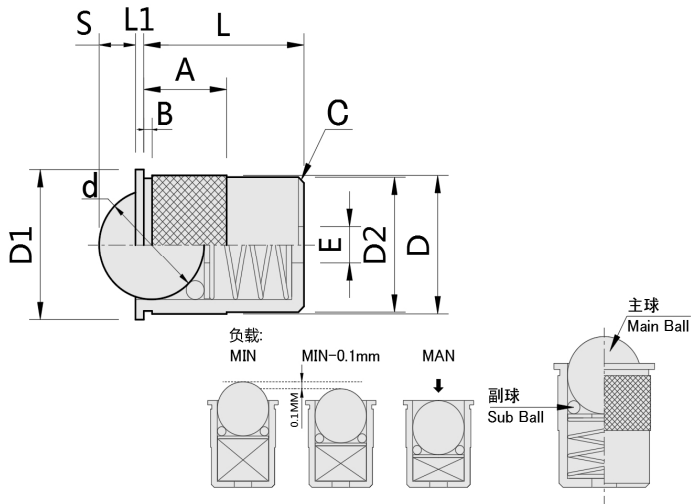
- 滚轮型压入式球头柱塞
- Roller Press-Fit Plungers

型号实例	型式 Type+D1
例如	ZPFPR15

Part Number	Type+D1
order	ZPFPR15

【!】采用主球与副球的结构设计，确保球头旋转顺畅。

【!】The combination structure of the main ball and the sub balls helps smooth rotation of the ball.



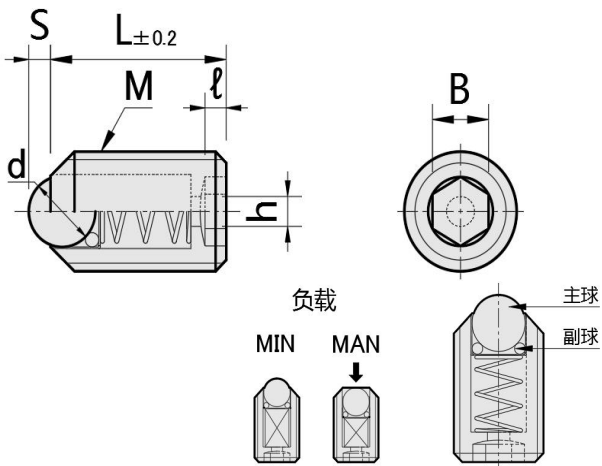
材质对照表 (Materials)				
型号 Type	材质Material			
	①主体 Main Body	②主球 Main Ball	③副球 Sub Ball	④弹簧 Spring
ZPFPR	聚缩醛Polyacetal	聚缩醛Polyacetal	SUS440C	SUS304
ZPFPRJ	聚缩醛Polyacetal	SUS440C	SUS440C	SUS304

参数对照表 (Specifications)														
型式Part Number		D1	D2	L	S	L1	d	A	B	E	C	耐负载/load(N)		
Type	D											min.	min.-0.1mm	max.
ZPFPR	7	9	/	7.5	1.5	1	4.76	7.5	1	1.5	0.8	0	0~0.1	2
	9	11	8.4	10	1.7	1	5.56	7	1	2.5	1	0	0~0.2	4
	13	15	12.4	15	2.8	1	8.73	7	1.2	3	1	0	0~0.3	7
	15	17	14.7	16.5	3.5	1	10.3	8.5	1.5	3.5	1	0	0~0.4	11
	20	22	19.4	22.5	5.2	1.5	15.9	10.5	1.5	5.3	1	0	0~0.5	14
	24	26	23.4	29	6.6	1.5	19.1	13.5	1.5	6.4	1	0	0~0.6	21

- 滚轮型球头柱塞
- Roller Ball Plungers

型号实例	型式 Type + M
例如	ZBPRM10

Part Number	Type + M
order	ZBPRM10



采用主球与副球的结构设计，确保球头旋转顺畅。

材质对照表 (Materials)				
型号 Type	材质Material			
	①主体 Main Body	②主球 Main Ball	③副球 Sub Ball	④弹簧 Spring
ZBPRM	SUS304	SUS440C	SUS440C	SUS304
ZBPRJ		聚缩醛Polyacetal		

参数对照表 (Specifications)									
型式Part Number		d	S	L	ℓ	B	h	负载/load(N)	
Type	M(粗牙螺纹)							min.	max.
ZBPRM (440C珠) ZBPRJ (POM球)	6	3	0.8	13	2.5	3	1.5	8.1	29.6
	8	4	1.3	15	2.5	4	2	12.6	39.8
	10	5	1.6	16	3	5	2.5	13.5	44.4
	12	7.1	2.3	20	3	6	3	16.1	46.9
	16	9.5	3.1	25	3	8	4	26.1	88.2

【!】前端部无扳手槽。仅为内六角孔安装。

【!】There is no wrench slot in the front end. Install for hexagon socket only.

【!】未进行防松动处理。

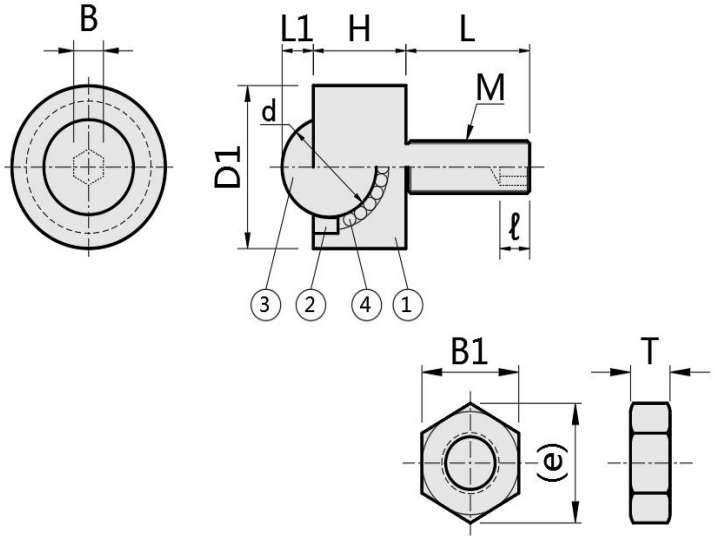
【!】No anti loosening treatment was carried out.



- 螺帽固定型钢珠滚轮
- Ball Rollers - Lock Nut, Flange Mount

型号实例	型式 Type + D1
例如	ZBCHN16

Part Number	Type + D1
order	ZBCHN16



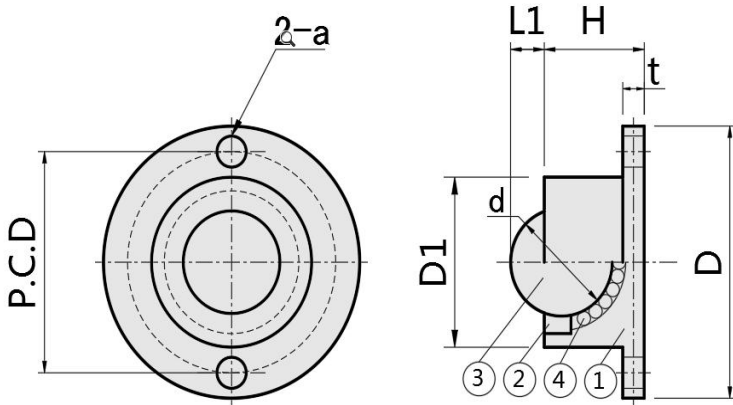
材质对照表 (Materials)				
型号 Type	材质Material			
	①主体 Main Body	②调整环 Spacer	③主球 Main Ball	④副球 Sub Ball
ZBCHN	SUS304	SUS304	SUS440C	SUS440C
ZBCHNJ	SUS304	SUS304	聚缩醛Polyacetal	(HRC55~)

参数对照表(Specifications)												
型式Part Number		L1	H	M	L	d	B	l	耐负载/load N(kgf)	螺母尺寸Nut Dimensions		
Type	D1									B1	(e)	T
ZBCHN (440C珠) ZBCHNJ (POM珠)	12	1.5	6.5	6	15	5.56	3	3.5	41(4.2)	10	11.5	5
	16	2.5	9.5	6	15	8.73	3	3.5	55(5.6)	10	11.5	5
	19	3.5	11.5	8	20	10.32	4	5	62(6.3)	13	15	6.5
	25	5.3	14.7	8	20	15.87	4	5	343(35)	13	15	6.5
	31	6.3	18.7	10	25	19.05	5	6	412(42)	17	19.6	8

- 法兰型钢珠滚轮
- Ball Rollers - Lock Nut, Flange Mount

型号实例	型式 Type + D
例如	ZBCHF27

Part Number	Type + D
order	ZBCHF27



材质对照表 (Materials)				
型号 Type	材质Material			
	①主体 Main Body	②调整环 Spacer	③主球 Main Ball	④副球 Sub Ball
ZBCHF	SUS304	SUS304	SUS440C	SUS440C
ZBCHFJ	SUS304	SUS304	聚缩醛Polyacetal	(HRC55~)

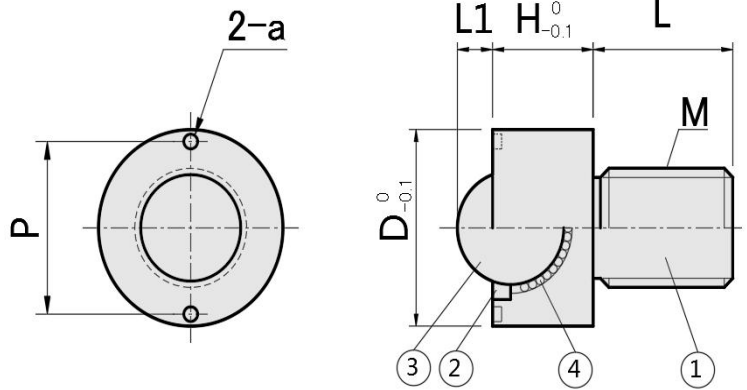
参数对照表(Specifications)									
型式Part Number		D1	L1	H	t	P.C.D	a	d	耐负载/load N(kgf)
Type	D								
ZBCHF (440C珠) ZBCHFJ (POM珠)	27	15	2.5	9.5	2	21	3.5	8.73	55(5.6)
	30	18	3.5	11.5	2	24	3.5	10.32	62(6.3)
	39	24	5.3	14.7	3	31.5	4.5	15.87	343(35)
	48	30	6.3	18.7	4	39	5.5	19.05	412(42)



- 圆螺栓型钢珠滚轮
- Ball Rollers - Round Head, Stud

型号实例	型式 Type + M
例如	ZBCHM10

Part Number	Type + M
order	ZBCHM10



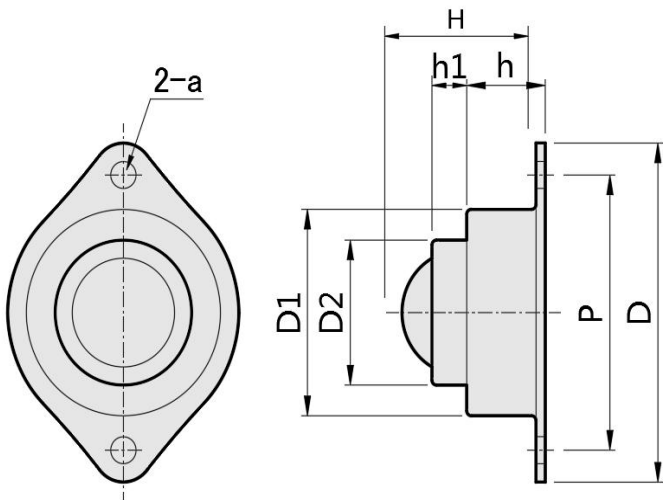
材质对照表 (Materials)				
型号 Type	材质Material			
	①主体 Main Body	②调整环 Spacer	③主球 Main Ball	④副球 Sub Ball
ZBCHM	SUS304	SUS304	SUS440C	SUS440C
ZBCHMJ	SUS304	SUS304	聚缩醛Polyacetal	(HRC55~)

参数对照表(Specifications)									
型式Part Number									耐负载/Load N(kgf)
Type	M	L	L1	H	D	d	a	P	
ZBCHM (440C珠)	10	12	2.5	10	18.5	8.73	2	15.4	55(5.6)
	12	15	3.5	11	22	10.32	2	18.5	62(6.3)
ZBCHMJ (POM珠)	16	20	5.3	15	27	15.87	2.5	24	343(35)
	20	25	6.3	18	33	19.05	2.5	29.6	412(42)

- 法兰型钢珠滚轮
- Ball Rollers-Flange Mounted

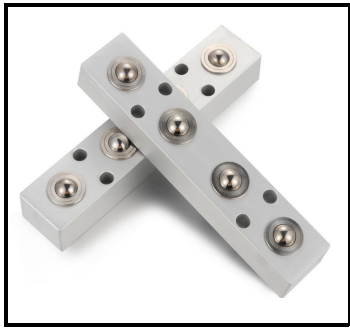
型号实例	型式 Type + D
例如	ZBCHY69

Part Number	Type + D
order	ZBCHY69



材质对照表 (Materials)				
型号 Type	材质Material			
	主体 Main Body	表面处理 Surface Treatment	①主球 Spacer	②副球 Main Ball
ZBCHY	SPCD	镀锌 Trivalent Chromate	轴承钢 SUJ2	轴承钢 SUJ2

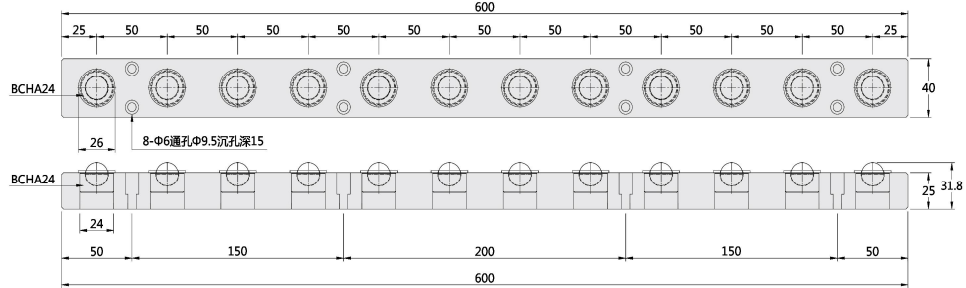
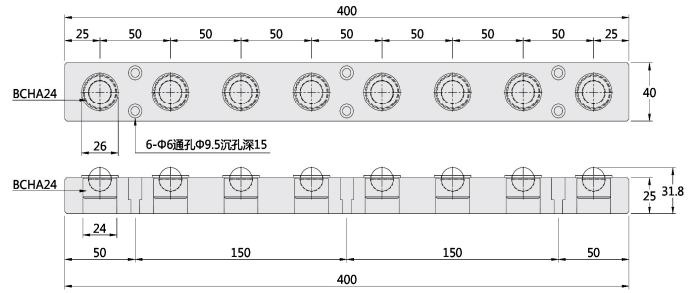
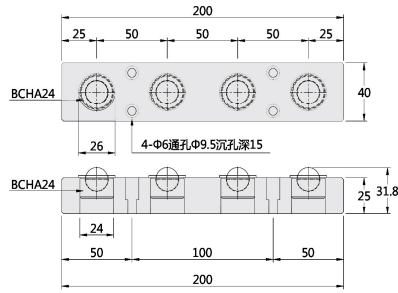
参数对照表(Specifications)								
型式Part Number								
Type	D	D1	D2	d	H	h	h1	P
ZBCHY	69	42	29.5	25.4	31	17	7.5	56



- 压入式钢珠滚轮组件
- Press-Fit-Ball Roller Units

型号实例	型式 Type + L
例如	ZBUHA200

Part Number	Type + L
order	ZBUHA200



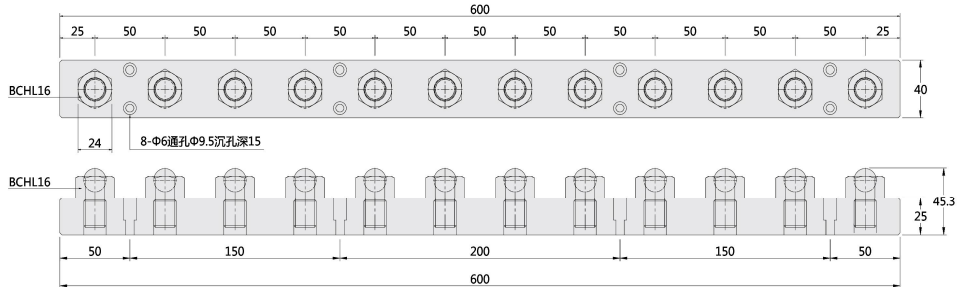
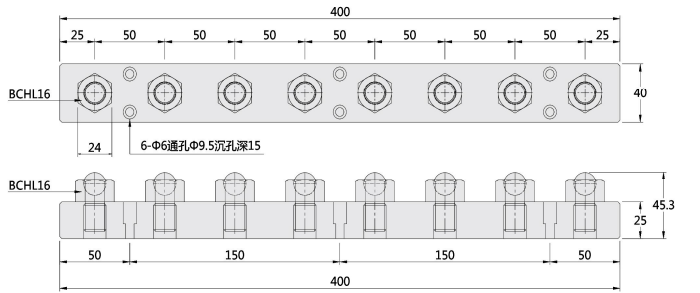
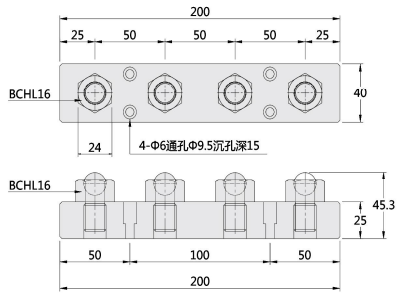
材质对照表 (Materials)						参数对照表 (Specifications)			单个钢珠滚轮的耐负载			
型号 Type	使用球头钢珠滚轮 Use ball-head steel ball rollers		材质Material				型式Part Number		滚轮数量 Number of Rollers	型号Type		
	形状 Shape	型式 Part Numbe	主体 Main Body	调整环 Spacer	主球 Main Ball	副球 Sub Ball	型材 Frame	型号 Type		全长 Long	型号 Type	耐负载/Load N(kgf)
ZBUHA	压入型 Press Fit	ZBCHA24	SUS304	SUS304	SUS440C (HRC55~)	SUS440C (HRC55~)	A6063Aluminum Alloy(铝本色阳极氧化处理)	ZBUHA	200	4	ZBUHA	343(35)
								400	8			
								600	12			



- 外六角型钢珠滚轮组件
- Hex Head-Ball Roller Units

型号实例	型式 Type + L
例如	ZBUHL200

Part Number	Type + L
order	ZBUHL200



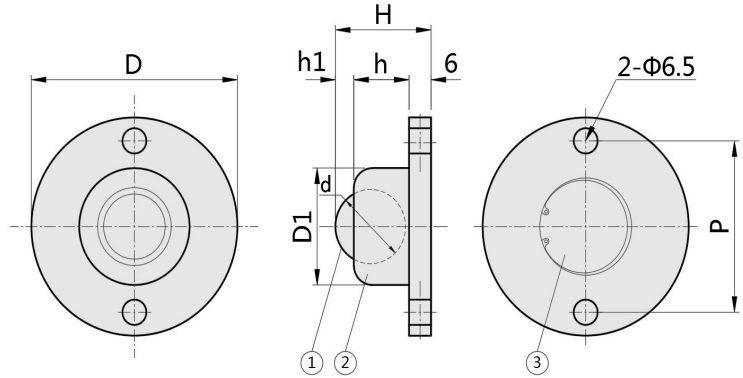
材质对照表 (Materials)						参数对照表 (Specifications)			单个钢珠滚轮的耐负载			
型号 Type	使用球头钢珠滚轮 Use ball-head steel ball rollers		材质Material				型式Part Number		滚轮数量 Number of Rollers	型号Type		
	形状 Shape	型式 Part Numbe	主体 Main Body	调整环 Spacer	主球 Main Ball	副球 Sub Ball	型材 Frame	型号 Type		全长 Long	型号 Type	耐负载/Load N(kgf)
ZBUHL	六角螺柱型 Hex Head Stud	ZBCHL16	SUS304	SUS304	SUS440C (HRC55~)	SUS440C (HRC55~)	A6063Aluminum Alloy(铝本色阳极氧化处理)	ZBUHL	200	4	ZBUHL	343(35)
								400	8			
								600	12			



- 切割法兰安装型钢珠滚轮
- Cutting flange mounting type steel ball

型号实例	型式 Type+NO.
例如	Z BCF50

Part Number	Type+NO.
order	Z BCF50



材质对照表 (Materials)

型号 Type	材质Material			
	①主球 Main Ball	②壳体 Shell	③主体 Main Body	④副球 Sub Ball
ZBCF	SUJ2	铝AL	SCM415	SUJ2

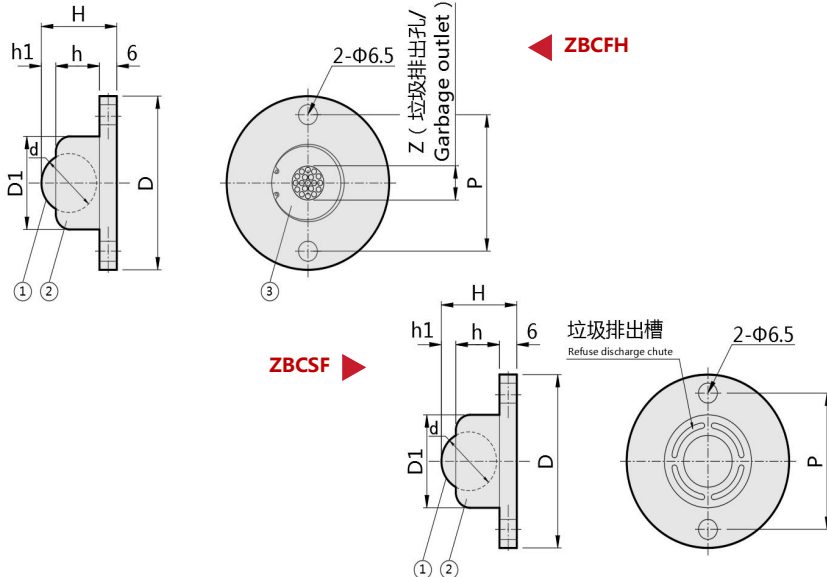
参数对照表(Specifications)

型式Part Number	D	D1	d	H	h	h1	P	耐负载/Load N(kgf)
Type	NO.							
ZBCF	50	56	30	19.05	26	15	44	588(60)
	120	66	42	25.4	36	23.5	54	1470(150)

- 带垃圾排出孔/槽法兰安装型滚
- Installation type roller with garbage discharge hole/groove flange

型号实例	型式 Type+NO.
例如	Z BCFH50

Part Number	Type+NO.
order	Z BCFH50



材质对照表 (Materials)

型号 Type	材质Material			
	①主球 Main Ball	②壳体 Shell	③主体 Main Body	④副球 Sub Ball
ZBCFH	SUJ2	铝AL	SCM415	SUJ2
ZBCSF	SUJ2	铝AL	SCM415	SUJ2

参数对照表(Specifications)

型式Part Number	D	D1	d	H	h	h1	P	Z	安装方向 Installation direction	垃圾排出孔 Garbage outlet	耐负载/Load N(kgf)
Type	NO.										
ZBCFH	50	56	30	19.05	26	15	5	44	所有方向 All directions	底部 Bottom	588(60)
	120	66	42	25.4	36	23.5	6.5	54			1470(150)
ZBCSF	50	56	30	19.05	26	15	5	44	滚珠向下用 The ball goes down	头部 Head	588(60)
	120	66	42	25.4	36	23.5	6.5	54			1470(150)



■ 切削外螺纹安装型钢球滚轮

■ Ball roller with cutting male thread mounting type

型号实例	型式 Type+NO.
例如	Z BCBE50

Part Number	Type+NO.
order	Z BCBE50

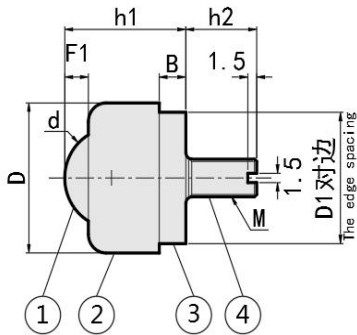
【!】ZBCBE在上下方向和水平方向均可使用。

【!】The ZBCBE can be used in both up and down directions as well as horizontal directions.

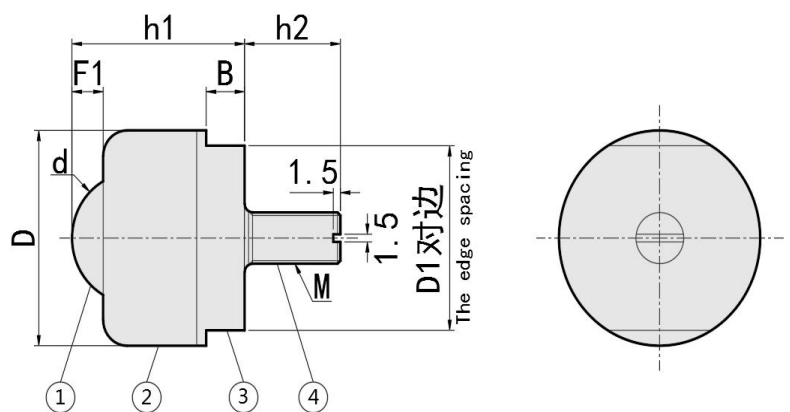
【!】ZBCBE120的螺纹部无一字槽。

【!】The thread part of ZBCBE120 has no slot.

ZBCBE10 / ZBCBE20



ZBCBE50 / ZBCBE120



材质对照表 (Materials)

型号 Type	材质Material			
	①主球 Main Ball	②壳体 Shell	③主体 Main Body	④副球 Sub Ball
ZBCBE	SUJ2	SUM	SCM415	SUJ2

参数对照表 (Specifications)

型式Part Number		D	D1	d	B	h1	h2	F1	M	耐负载/Load N(kgf)
Type	NO.									
ZBCBE	10	15	13	9.525	3.5	15	12	2.5	M6	147(15)
	20	24	21	15.875	4.5	20.5	12	4	M6	343(35)
	50	30	27	19.05	6	26	20	5	M8	588(60)
	120	42	36	25.4	8	36	20	6.5	M10	1470(150)



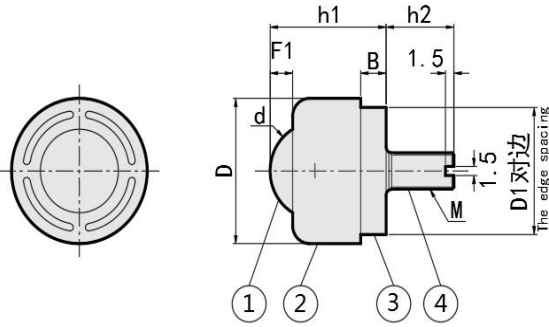
- 带垃圾排出槽切削外螺纹安装型
- Cutting external thread mounting type with garbage discharge groove

型号实例	型式 Type+NO.
例如	ZBCS20

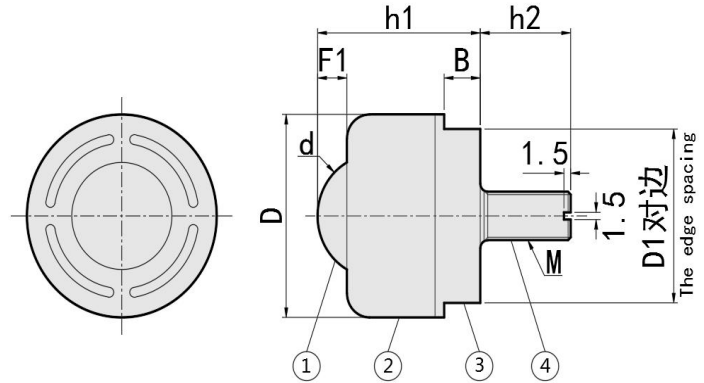
Part Number	Type+NO.
order	ZBCS20

- 【!】 ZBCS在上下方向和水平方向均可使用。
- 【!】 The ZBCS can be used in both up and down directions as well as horizontal directions.
- 【!】 ZBCS120的螺纹部无一字槽。
- 【!】 The thread part of ZBCS120 has no slot.

ZBCS20



ZBCS50 / ZBCS120



材质对照表 (Materials)				
型号 Type	材质Material			
	①主球 Main Ball	②壳体 Shell	③主体 Main Body	④副球 Sub Ball
ZBCS	SUJ2	SUM	SCM415	SUJ2

参数对照表(Specifications)											
型式Part Number		D	D1	d	B	h1	h2	F1	M	垃圾排出孔 Waste discharge hole	耐负载/Load N(kgf)
Type	NO.										
ZBCS	20	24	21	15.875	4.5	20.5	12	4	M6	头部 Head	343(35)
	50	30	27	19.05	6	26	20	5	M8		588(60)
	120	42	36	25.4	8	36	20	6.5	M10		1470(150)



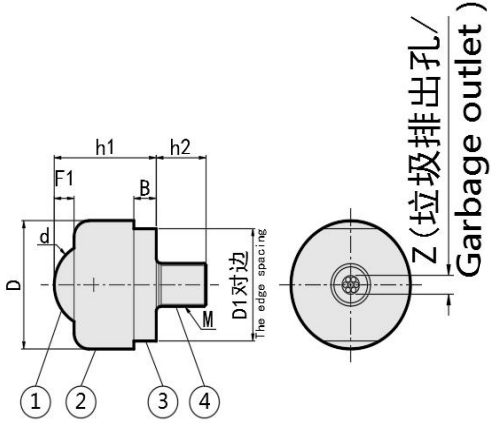
- 带垃圾排出孔切削外螺纹安装型滚轮
- Cutting male thread mounting type with garbage discharge hole

型号实例	型式 Type+NO.
例如	Z BCBH20

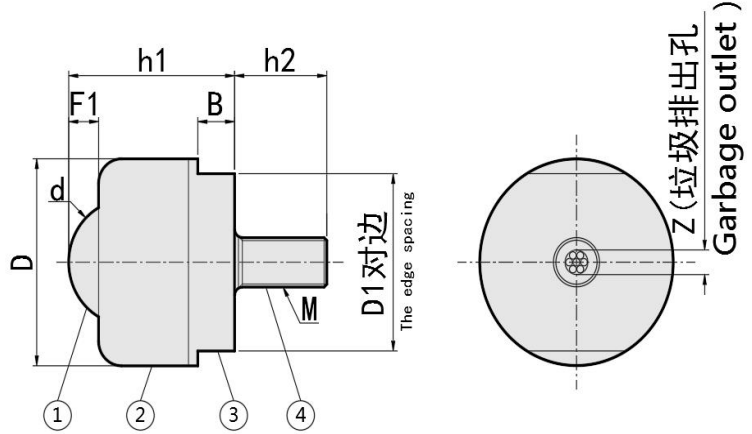
Part Number	Type+NO.
order	Z BCBH20

- 【!】ZBCBH在上下方向和水平方向均可使用。
- 【!】ZBCBH can be used in both up and down directions as well as horizontally.

ZBCBH20



ZBCBH50 / ZBCBH120



材质对照表 (Materials)				
型号 Type	材质Material			
	①主球 Main Ball	②壳体 Shell	③主体 Main Body	④副球 Sub Ball
ZBCBH	SUJ2	SUM	SCM415	SUJ2

参数对照表(Specifications)												
型式Part Number	D	D1	d	B	h1	h2	F1	M	Z	垃圾排出孔 Waste discharge hole	耐负/Load N(kgf)	
Type	NO.									螺纹部 Ministry of thread		
ZBCBH	20	24	21	15.875	4.5	20.5	10	4	M8		3.5	343(35)
	50	30	27	19.05	6	26	10	5	M8		3.5	588(60)
	120	42	36	25.4	8	36	20	6.5	M10	5	1470(150)	