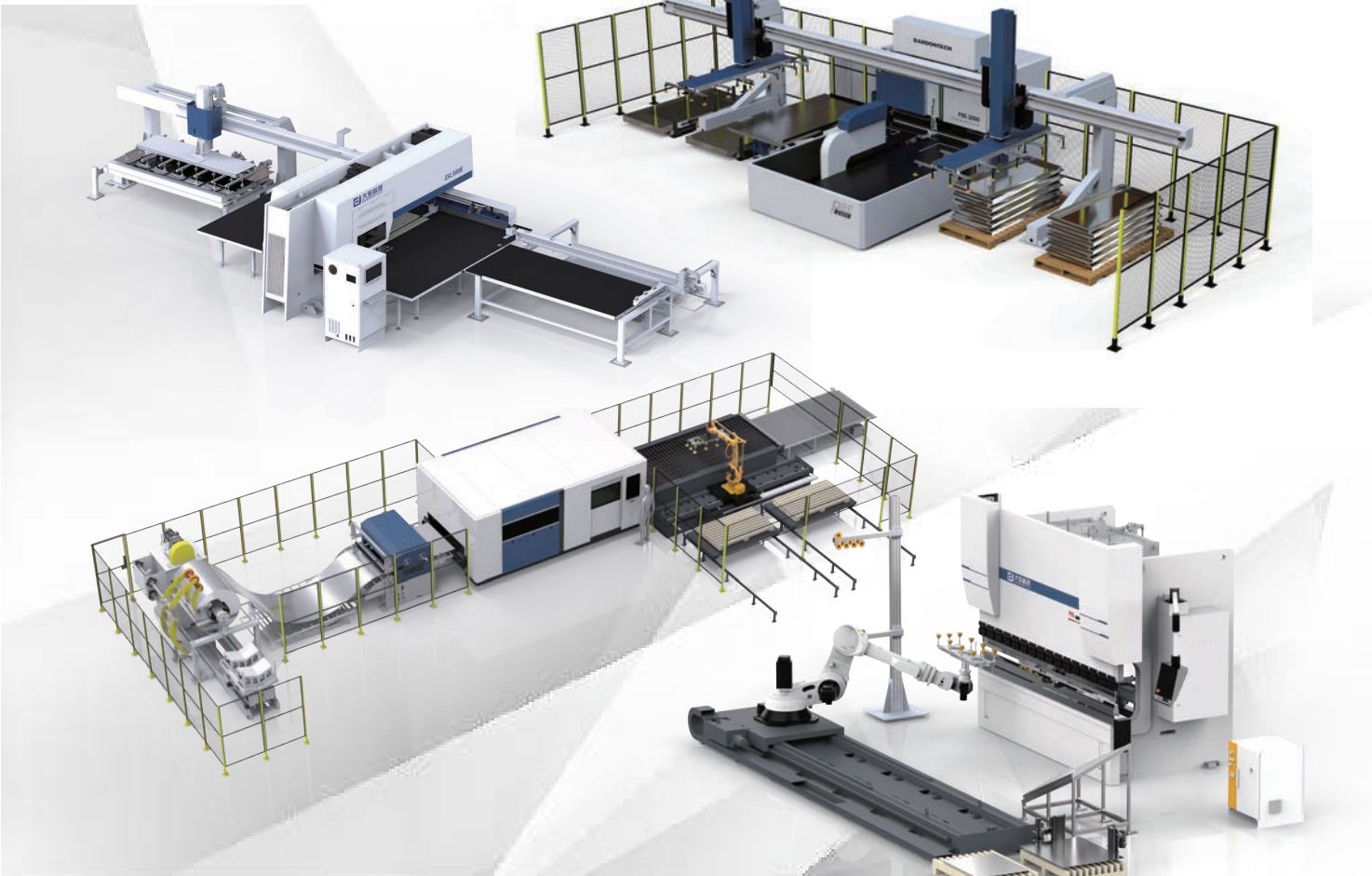


# DARDONTECH

Enable Global Manufacturing



- Laser Cutting Machine
- CNC Press Brake
- CNC Turret Punch Press
- Panel Bender
- Punch and Laser Combined Machine

# C COMPANY PROFILE



Scan to view and step into DARDONTECH

Qingdao Dadong Automation Technology Co., Ltd. was founded in March 2013. In August 2018, invested 36.5 million US dollars in the construction of the Intelligent CNC Equipment Technology Park in Qingdao Marine High-tech Zone, which was put into use in August 2019. The Second Phase (also known as the large tonnage press brake project) has an investment of 30 million US dollars, and the Third Phase (also known as the Sheet Metal Intelligent Manufacturing Automation Production Line Project) has an investment of 53 million US dollars. The total area is 128,000 m<sup>2</sup>. Together, these phases have formed the "China Sheet Metal Equipment Intelligent Transformation Base".

The company is specialized in CNC machine tools for sheet metal industry, such as Punch & Laser Combined Machine, Fiber Laser Cutting Machine, CNC press brake, CNC Turret Punch Press, and Panel Bender, as well as CNC flexible production lines. They are widely used in metal processing industries including power complete sets of equipment, cabinets, curtain wall decoration, household appliances, elevators, fire doors, kitchen equipment, heavy machinery, and ship building industries, etc.

The company has an independent R&D department, which promotes the development of the industry through technological innovation. The thunder-speed pre-sale and after-sale service mechanism is another factor of sound reputation. The products are sold well globally, such as Europe, North America, South America, Southeast Asia, South Asia, Central Asia, Africa, the Middle East, and Russia.

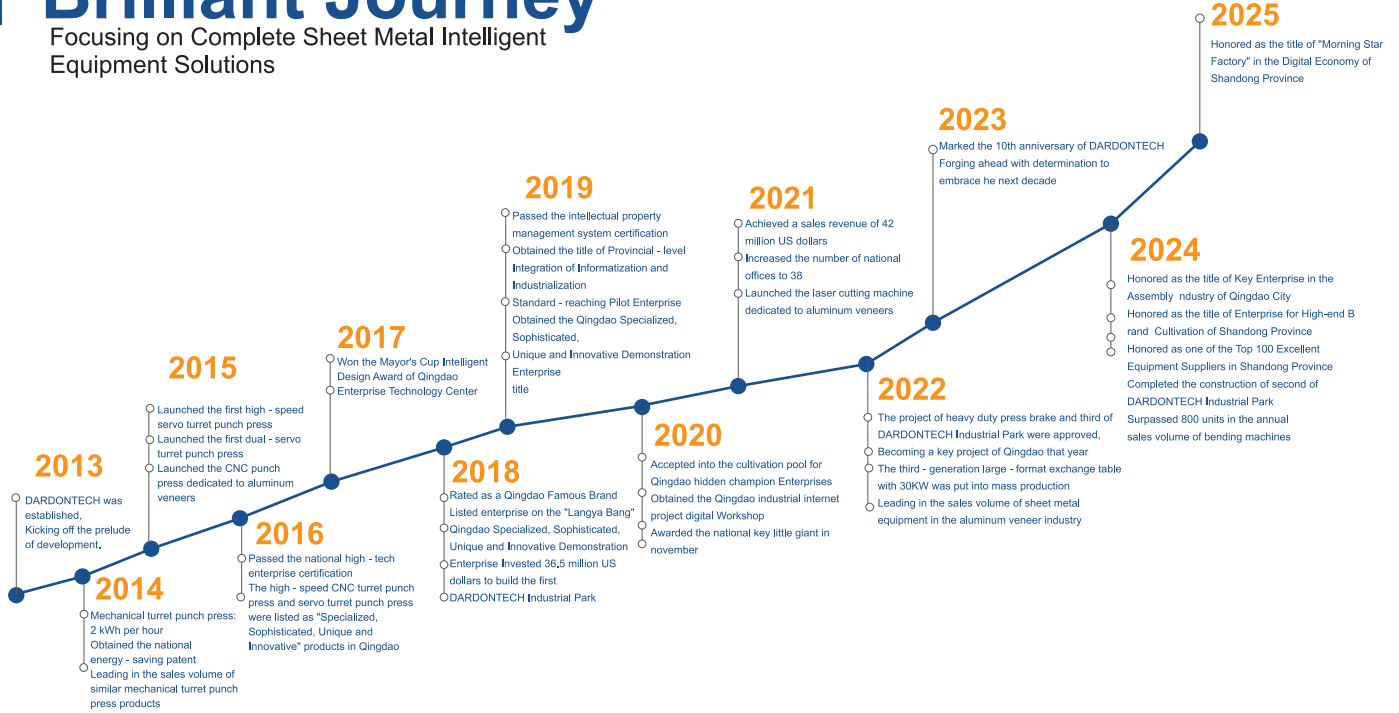
During this period, the company has established industry-university-research cooperation agreements with institutions such as Nanjing University of Science and Technology and Qingdao Military-Civilian Integration College.



# MILESTONE

## Brilliant Journey

Focusing on Complete Sheet Metal Intelligent Equipment Solutions



# PRODUCTIONS

## CNC TURRET PUNCH PRESS WORKSHOP



## CNC PRESS BRAKE WORKSHOP



# PRODUCTIONS

## LASER CUTTING MACHINE WORKSHOP



## PANEL BENDER WORKSHOP



# MACHINING STRENGTH

## 5-Axis Machining Center



MODEL: VORTEX I-630V/6S  
Process Range: 1425x1050x1050

## 5m Gantry Machining Center



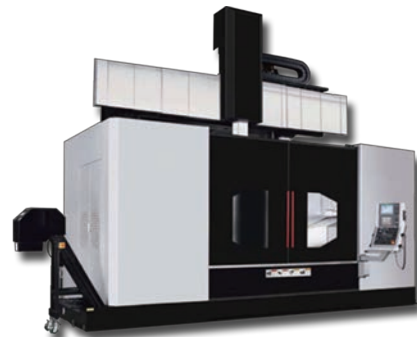
MODEL: ML-532Z4  
Process Range: 5060x3200x1400

## 6m Gantry Machining Center



MODEL: ML-640Z4  
Process Range: 6000x3500x1800

## Vertical CNC Turning Machine



MODEL: VL2500  
Process Range: 2500x2000

## Sandblasting



Purpose: Sandblasting  
Process Range: 2500x6000x2500

## Painting



MODEL: VL2500  
Process Range: 2500x2000

# MACHINING STRENGTH



**Bed Tempering:  
Stress Relief**



**KEYENCE Coordinate  
Measuring Machine (CMM):  
Inspecting Geometric  
Tolerance Accuracy**



**RENISHAW  
Laser Interferometer:  
Precision Inspection and  
Automatic Compensation**



**RENISHAW Ballbar:  
Inspecting the circular  
motion trajectory of  
machine tools**





---

DE EXCHANGING TABLE

---

DG HIGH-SPEED CUTTING

---

DC SIDE DISCHARGE CUTTING

---

DS SINGLE TABLE

---

DF COIL CUTTING, ROTATING PLATFORM,  
LARGE-FORMAT 10KW-GRADE LASER CUTTING

---

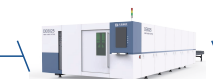
DT TUBE/PROFILE CUTTING

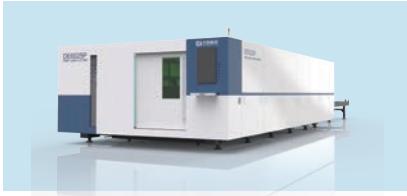
---

DW LASER WELDING

---

## FIBER LASER CUTTING MACHINE





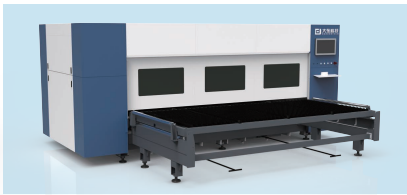
### DE FIBER LASER CUTTING MACHINE

Exchanging table, full enclosure



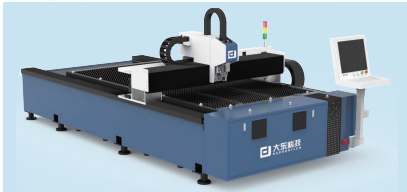
### DG HIGH-SPEED CUTTING

Overall efficiency increased by 35%



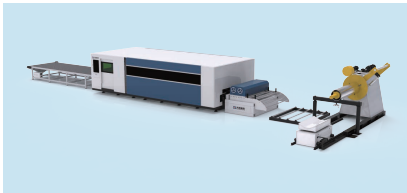
### DC SIDE DISCHARGE CUTTING

Space-saving, fast table exchange



### DS FIBER LASER CUTTING MACHINE

Single platform, compact structure



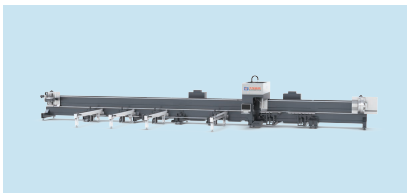
### DF COIL LASER CUTTING MACHINE

Rotary platform, compatible with coil flexible production line, cost reduction and efficiency improvement



### LARGE-FORMAT 10KW-GRADE LASER CUTTING

Single/double table, ground rail structure, bevel cutting



### DT TUBE/PROFILE CUTTING

Customized chuck, integrated sheet & tube cutting

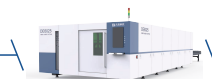


### DW LASER WELDING

Easy to operate, multiple functions available



# FIBER LASER CUTTING MACHINE



# DE SERIES FIBER LASER CUTTING MACHINE



Scan the QR code to watch the video

## Features

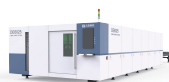
- Adopt welded structure frame, overall high temperature aging treatment
- Adopts gantry dual-drive structure
- Adopt aviation aluminum for beam and z axis
- High-precision rack, bilateral gear
- Design of plate concave-convex surface follow-up cutting head
- Multi-limits protection (inductive limit, hard limit, origin limit)
- Exchangeable worktable loading/unloading method.
- Fully enclosed protection

## SPECIFICATIONS

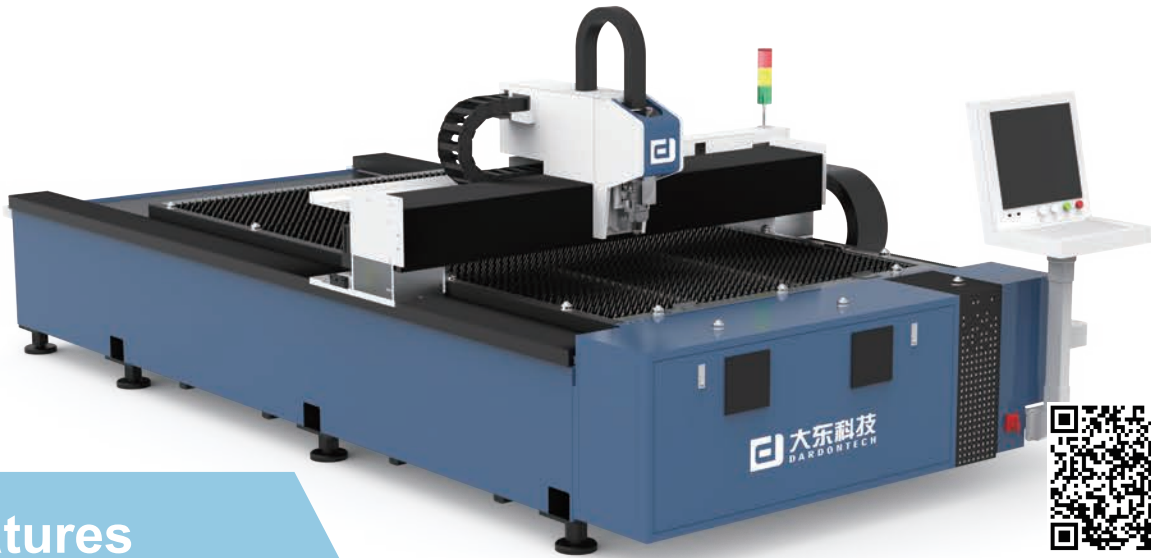
SPECIFICATION	Unit	DE3015	DE4020	DE6020	DE6025	DE8025	DE12025
Max. sheet size	mm	3000x1500	4000x2000	6000x2000	6000x2500	8000x2500	12000x2500
X axis stroke	mm	1530	2030	2030	2530	2530	2550
Y axis stroke	mm	3030	4030	6030	6030	8030	12050
Z axis stroke	mm	≤300	≤300	≤300	≤300	≤350	≤350
X/Y Max. speed	m/min	120	120	120	120	120	120
X/Y Max. acceleration	g	1.2	1.2	1.2	1.2	2.0	2.5
X/Y positioning accuracy	mm	± 0.03	± 0.03	± 0.05	± 0.05	+ 0.05	±0.05
X/Y re-positioning accuracy	mm	± 0.02	± 0.02	± 0.02	± 0.02	± 0.02	± 0.02
Dimension(LxWxH)	m	9.0x3.0x2.4	10.6x3.5x2.4	15.8x3.5x2.4	15.8x4.0x2.4	19.8x4.0x2.4	27.8x4.0x2.4

## Options

Laser power	1kW	1.5kW	2kW	3kW	4kW	6kW	8kW	12kW	15kW	20kW
Dust collector	4 filters(5.5kW)						6 filters(7.5kw)		8 filters(11kW)	
Stabilizer	SWF-30KVA			SWF-50KVA		SWF-80KVA	SBW-100KVA	SBW-120KVA	SBW-150KVA	



# DS SERIES FIBER LASER CUTTING MACHINE



Scan the QR code to watch the video

## Features

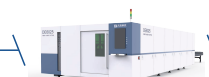
- Welded frame, overall high temperature aging treatment and high precision machining
- Adopt gantry dual-drive structure
- Adopt aviation aluminum for beam and z axis.
- High-precision rack, bilateral gear
- Design of plate concave-convex surface follow-up cutting head
- Universal supporting steel ball
- Multiple limit protection(induction limit, hard limit, origin limit)

## SPECIFICATIONS

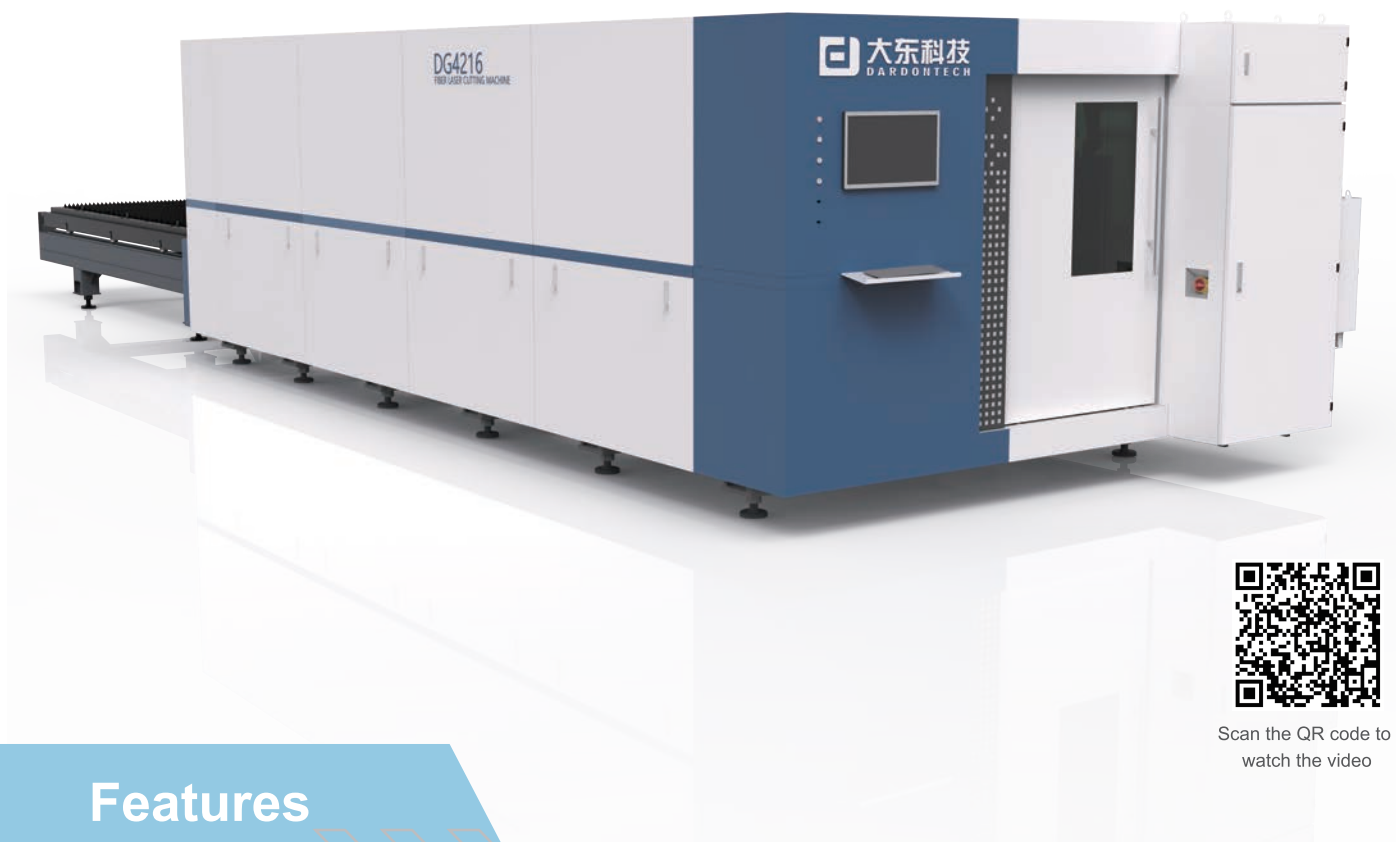
SPECIFICATION	Unit	DS3015	DS4020	DS6020	DS6025	DS8025	DS12025
Max. processing sheet	mm	3000x1500	4000x2000	6000x2000	6000x2500	8000x2500	12000 2500
X axis stroke	mm	1530	2030	2030	2530	2530	2530
Y axis stroke	mm	3030	4030	6030	6030	8030	12030
Z axis stroke	mm	≤150	≤150	≤150	≤150	≤200	≤ 200
X/Y Max. speed	m/min	120	120	120	120	120	120
XY Max. acceleration	g	1.2	1.2	1.5	1.5	2.0	2.5
X/Y positioning accuracy	mm	+0.03	± 0.03	± 0.05	± 0.05	±0.05	±0.05
X/Y re-positioning accuracy	mm	±0.02	± 0.02	± 0.02	±0.02	±0.02	±0.02
Dimension(LxWxH)	m	5X2.3X2	6.2x3x2	8.5x3.0x2.1	8.5X3.7X2.1	10.5X3.6X2.1	14.9X3.8X2.2

## Options

Laser power	1kW	1.5kW	2kW	3kW	4kW	6kW	8kW	12kW	15kW	20kW
Dust collector	4 filters(5.5kW)						6 filters(7.5kw)		8 filters(11kW)	
Stabilizer	SWF-30KVA			SWF-50KVA		SWF-80KVA	SBW-100KVA	SBW- 120KVA	SBW- 150KVA	



# DG SERIES FIBER LASER CUTTING MACHINE



Scan the QR code to  
watch the video

## Features

- Direct cutting without piercing
- Efficiency increased by 35% compared with conventional equipment
- Three-year maintenance-free for consumable parts of the cutting head
- High focal-length of the cutting head, avoiding damage to the cutting head

### SPECIFICATIONS

SPECIFICATION	Max. processing sheet	X axis stroke	Y axis stroke	Z axis stroke	X/Y Max. speed	X/Y Max. acceleration	X/Y positioning accuracy	X/Y re-positioning accuracy	Dimension ( LxWxH)
DG4216	1600×4200	1630	4230	300	150	1.5	±0.02	±0.02	11.2×3.3×2.4
DG3216	1600×3200	1630	3230	300	150	1.5	±0.02	±0.02	9.2×3.3×2.4



# DC SERIES FIBER LASER CUTTING MACHINE



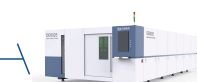
Scan the QR code to  
watch the video

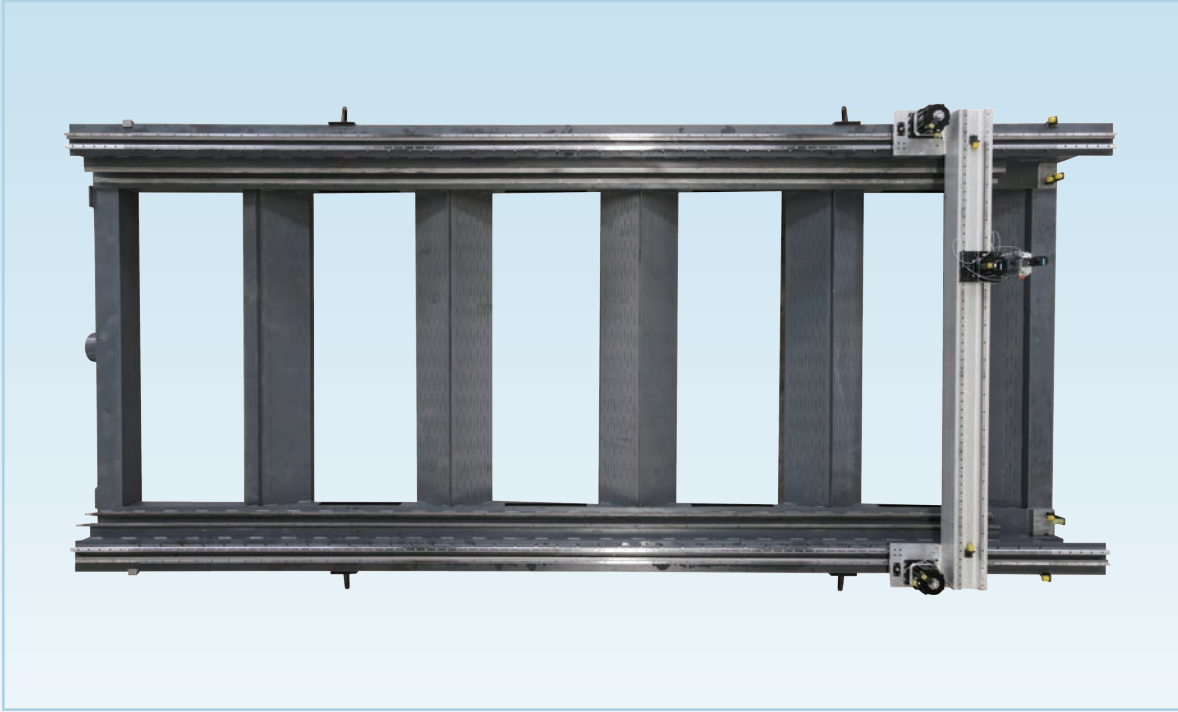
## Features

- Small footprint, space-saving
- Short exchange stroke, higher efficiency
- Optional single table/exchange table

### SPECIFICATIONS

SPECIFICATION	Max. processing sheet	X axis stroke	Y axis stroke	Z axis stroke	X/Y Max. speed	X/Y Max. acceleration	X/Y positioning accuracy	X/Y re-positioning accuracy	Dimension (LxWxH)
DC3015	3000×1500	1510	3010	150	120	1.5	±0.05	±0.03	4.8×4.5×2.4





## ■ Frame Structure

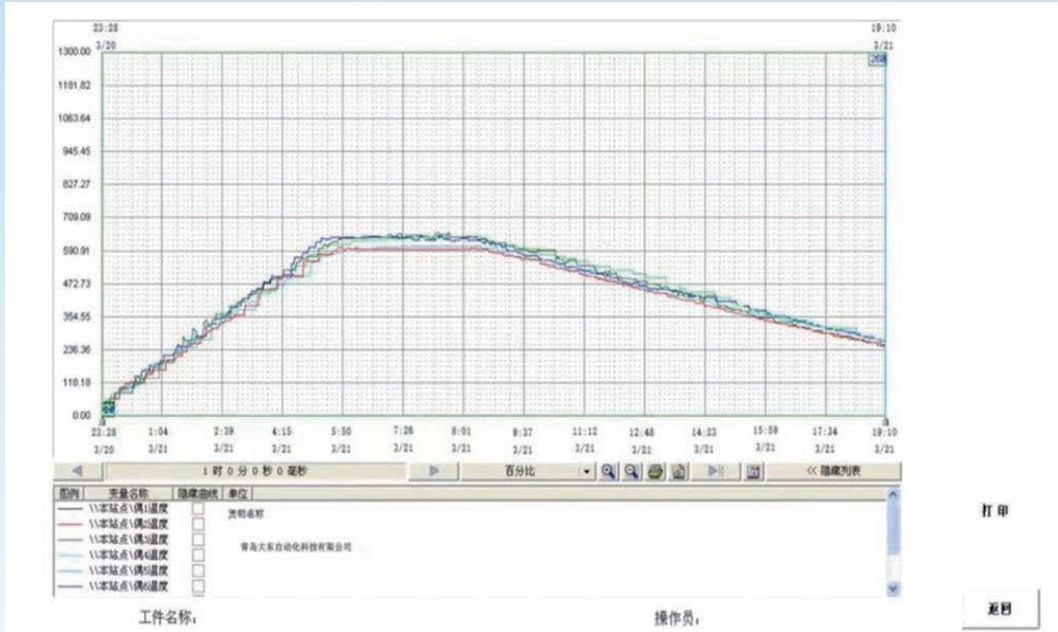
The entire series of frames from DARDONTECH adopt an integral steel plate welded structure, with overall heat treatment, large-scale imported CNC boring and milling machines for rough machining, secondary vibration aging treatment, and precision machining processes, ensuring the overall mechanical performance and long-term working stability.



## ■ Beam Design

Extruded aviation aluminum profiles, light weight, high density, high equipment acceleration; T6 heat treatment process, stress relief, ensuring uniform hardness; triangular structure, ensuring rigidity and better stability.





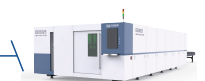
## ■ Frame Heat Treatment Process

DARDONTECH solemnly promises that each machine is made in accordance with the machine tool standards, strictly following the heat treatment process and naturally cooled.



## ■ Frame Installation Process

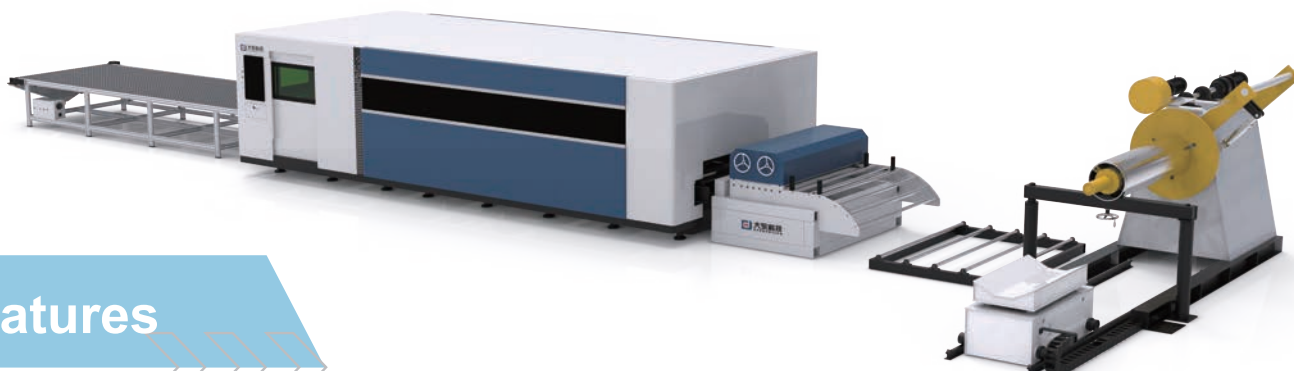
The imported Leica laser alignment instrument is used to inspect the parallelism and perpendicularity of the frame to ensure the installation accuracy, thereby ensuring the high-speed and high-precision cutting of the machine.



# DF SERIES FIBER LASER CUTTING MACHINE



Scan the QR code to  
watch the video

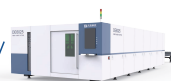


## Features

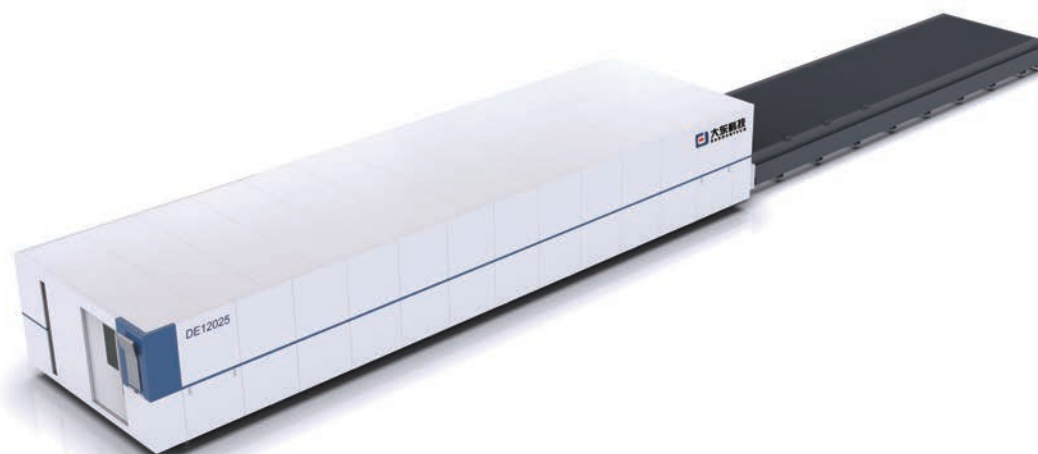
- Decoiling-Leveling-Cutting-Unloading, achieving more possibilities of full automation and unlimited cutting.

### SPECIFICATIONS

SPECIFICATION	Unit	DF3015	DF6020
Max. processing sheet	mm	3000x1500	6000x2000
X axis stroke	mm	1530	2030
Y axis stroke	mm	3030	6030
Z axis stroke	mm	150	150
X/Y Max. speed	m/min	120	120
X/Y Max. acceleration	g	1.2	1.2
X/Y positioning accuracy	mm	± 0.03	± 0.05
X/Y re-positioning accuracy	mm	±0.02	±0.02
Coild sheet thickness	mm	0.8~3.0	0.8~3.0
Coild sheet width	mm	≤1500	≤2000
Coil weight	T	≤10	≤12
Coil external diameter	mm	≤Φ1600	≤Φ2000
Drum collapsible range	mm	Φ470~Φ530	Φ470~Φ530



# LARGE FORMAT & HIGH POWER FIBER LASER CUTTING MACHINE

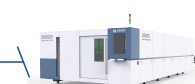


## Features

- Extremely wide processing range. The frame is made by welding steel plates and undergoes overall high-temperature heat treatment.
- Options include single or double tables, as well as overall and ground rail separate structures
- Options for thick plate bevel cutting are available.

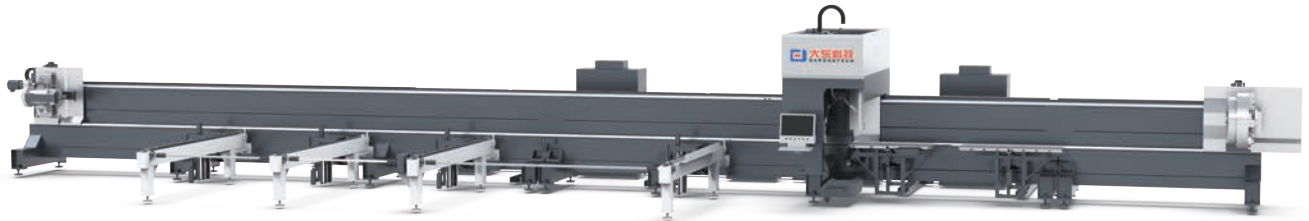
### SPECIFICATIONS

SPECIFICATION	Unit	DE-12025
Max. processing sheet	mm	12000x2500
X axis stroke	mm	2550
Y axis stroke	mm	12050
Z axis stroke	mm	≤350
X/Y Max. speed	m/min	120
X/Y Max. acceleration	g	2.5
X/Y positioning accuracy	mm	±0.05
X/Y re-positioning accuracy	mm	±0.02
Dimension(LxWxH)	m	27.8x4.0x2.4



# PROFILE/TUBE

# FIBER LASER CUTTING MACHINE



Scan the QR code to watch the video



Scan the QR code to watch the video



## SPECIFICATIONS

SPECIFICATION	Unit	DT-6022
Max. Tube Length	mm	6000
Z axis stroke	mm	300
Chuck	mm	Self-centering automatic chuck
Min. Tube Diameter	mm	10*10
Max. Tube Diameter	mm	220*220
Positioning accuracy	mm	±0.05
Repeatable rotation accuracy	mm	±0.05
Rated speed of chuck	r/min	150
Air pressure range	Mpa	0.2-0.7
Power supply requirement	V/HZ	380V/50HZ
Max. Weight of one Tube	kg	300



Optional: Three chucks zero tail + Servo following-up + Automatic feeding



## DW SERIES FIBER LASER WELDING MACHINE



Scan the QR code to watch the video

## Features

- The welding process is fast, the weld seams are aesthetically pleasing, and it reduces the need for grinding.
- There are various welding methods: spot welding, continuous welding, butt welding, lap welding, and fish-scale welding.
- The operation is simple and easy.

### SPECIFICATIONS

SPECIFICATIONS	Unit	DW-1500	DW-2000	DW-3000
Laser Power	W	1500	2000	3000
Laser Control Method		Continuous	Continuous	Continuous
Laser Wavelength	nm	1080±5	1080±5	1080±5
Power Stability		±2%	±2%	±2%
Laser Diameter	μm	50	50	50
Total Power	KW		5-9KW	
Power Source		220V,50-60Hz	220V,50-60Hz	380V,50-60HZ
Machine Size	mm	760x1100x1000	760x1100x1000	760X1100X1000
Consumable		Gas, Lens, Welding wires		
Welding Method		Continuous		
Fiber Cable Length	m	10(Customized)	10(Customized)	380V、50-60HZ
Control interface		Touch Screen		
Cooling Method		Water Cooling		
Option		Hand		

