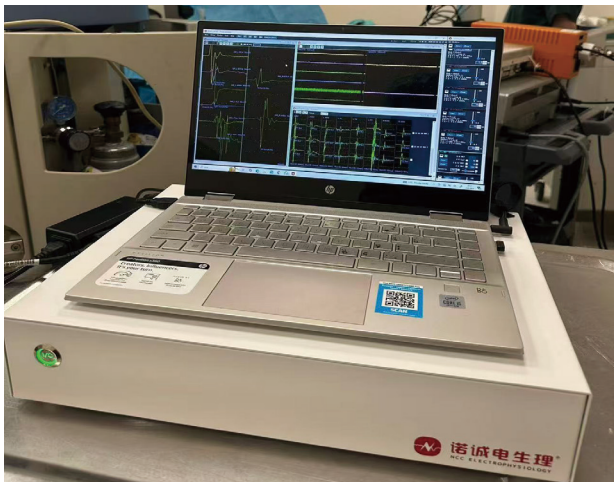


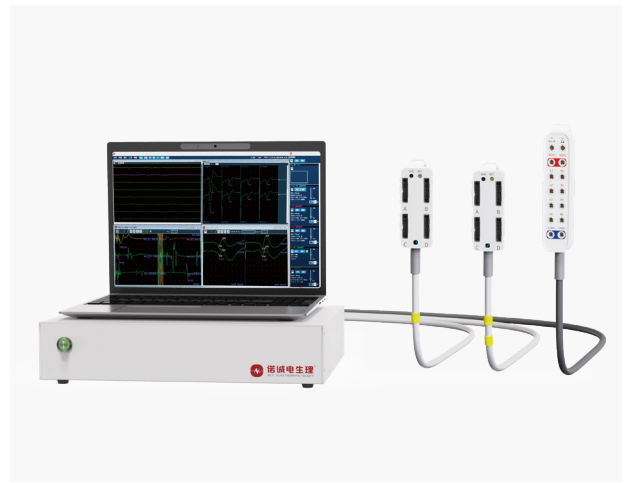
# <sup>TM</sup> **IONM System**



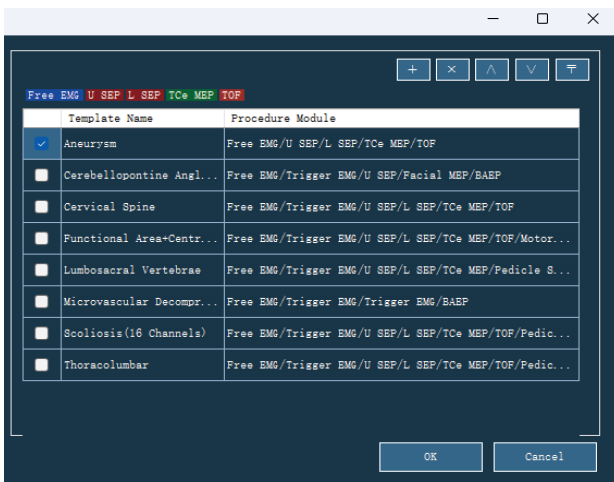
# Product features



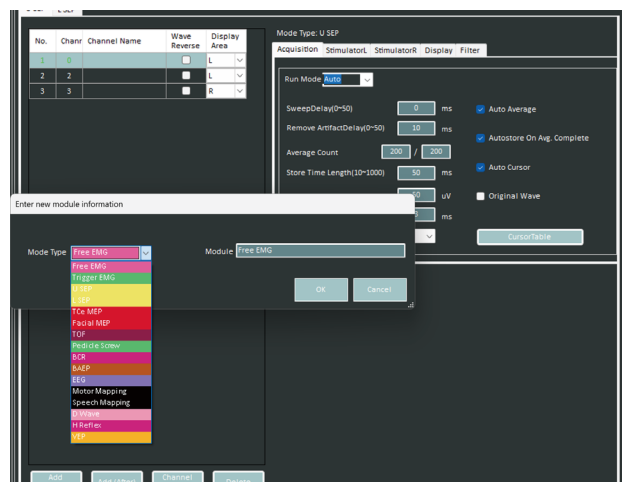
▲ Hospital application



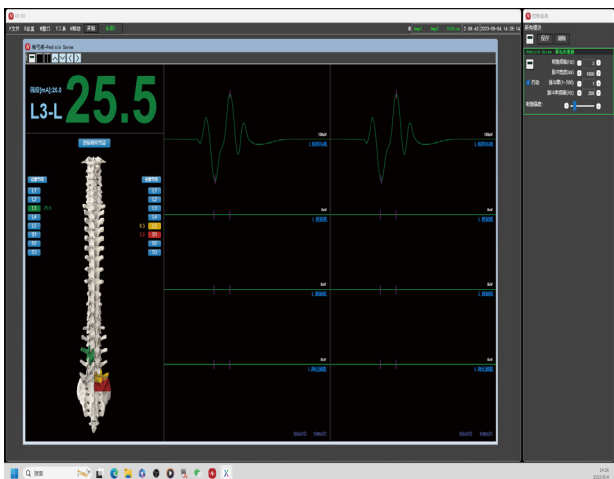
▲ Improve monitoring efficiency by multiple monitoring devices, easily switchable, on the same screen



▲ Specialized templates for different surgeries



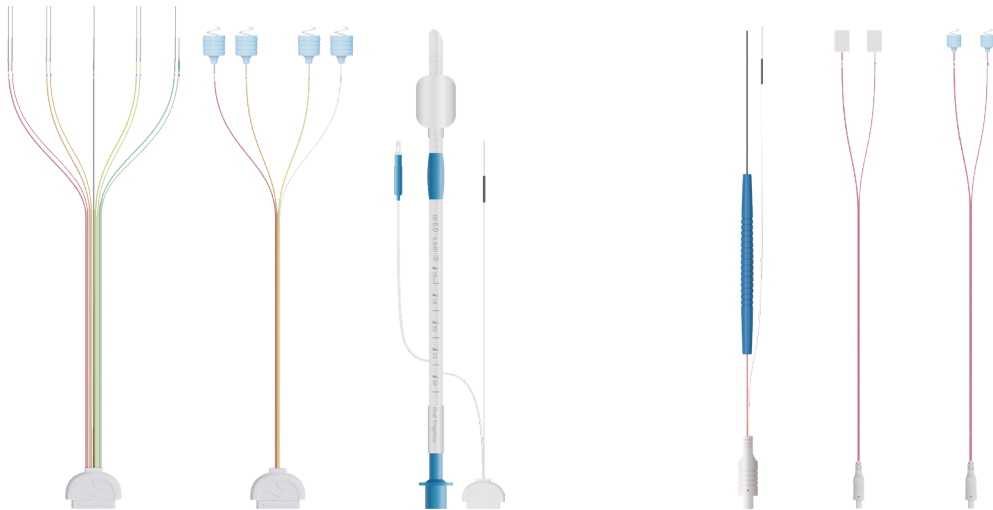
▲ Multi-module integrated monitoring, suitable for different clinical applications



◀ Introducing the Automatic Pedicle Screw Monitoring Module designed to ensure safe and accurate placement of pedicle screws during surgery by automatically increasing the pedicle probing current and stopping when reaching the threshold without any manual intervention, helping to monitor whether the pedicle wall has been penetrated or not and alert the surgeon to avoid damaging adjoining nerve roots

# NCC Exclusive Manufacturing Consumables

- Integrated design for consumables offering a complete solution with one connection, reducing error rate
- Easy to connect the corresponding labeled consumables, friendly for new users
- Integrated consumables possessing a robust anti-interference capability, enhancing waveform accuracy

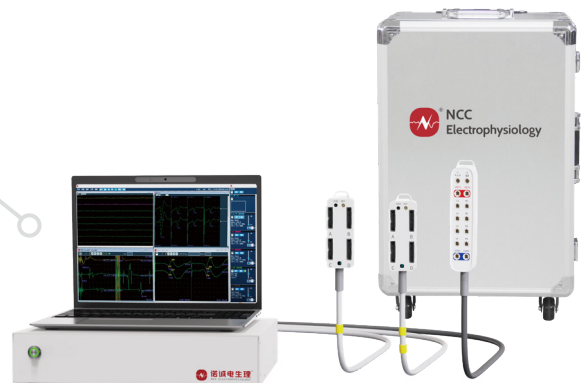


## Dual screen with trolley

- The entire system connected by a single wire, reducing error rates and improving efficiency by saving time required for preoperative preparation
- Minimized wear and tear of the device
- Adjustable dual screens with a main screen and an extended screen, with back-to-back mode allowing surgeons to view monitoring results directly, and compatible with an external microscope for more precise monitoring

## Portable version

- Portable suitcase design, storing all accessories in one suitcase
- Convenient for transportation between hospitals
- Flexible configuration of trolleys to meet various usage scenarios



# Clinical application

Department	Surgeries	Main risks	Suggested monitoring modules
Orthopedics	Cervical spine surgery	Spinal cord injury (high paraplegia) Nerve root injury (poor postoperative recovery) Safety of screw implantation	SEP+MEP+EMG+Trigger EMG+Pedicule Screw+TOF
	Thoracolumbar spine surgery	Spinal cord injury (risk of paralysis below the brachial plexus, with impairment of urination and excrement function) Nerve root injury (poor postoperative recovery) Safety of screw implantation	SEP+MEP+EMG+Trigger EMG+Pedicule Screw+TOF
	Coccyx surgery	Spinal cord injury (risk of paralysis below the brachial plexus, with impairment of urination and excrement function) Nerve root injury (poor postoperative recovery) Safety of screw implantation	SEP+MEP+EMG+Trigger EMG+Pedicule Screw+TOF+BCR+ H reflex
	Scoliosis correction surgery	Spinal cord injury (high paraplegia) Nerve root injury (poor postoperative recovery) Safety of screw implantation	SEP+MEP+EMG+Trigger EMG+Pedicule Screw+TOF
Neurosurgery	Microvascular decompression	Facial nerve damage Brainstem injury Surgical terminus determination	Free EMG+Trigger EMG+L-SR+SSEP+BAEP
	Hypophysoma	Optic nerve injury Monitoring visual evoked potentials	VEP+ Free EMG+Trigger EMG
	Carotid endarterectomy	Irreversible motor dysfunction caused by ischemia Monitoring vascular perfusion	SSEP+Tce MEP+EEG
	Cerebellar pontine area	Facial nerve damage (facial paralysis) Acoustic nerve injury (hearing loss) Exploration and confirmation of the facial nerve	Free EMG +Trigger- EMG+BAEP+SSEP+Facial MEP
	Functional area tumor	Motor dysfunction Aphasia Localization of functional areas	TceMep+SSEP+ Free EMG +EEG+Motor Mapping
	Arterial aneurysm	Irreversible motor dysfunction caused by ischemia Monitoring vascular perfusion	SSEP+TceMEP+EEG
	Intramedullary tumor	Spinal cord conduction dysfunction (motor, sensory) Spinal nerve roots injury Monitoring screw implantation	SSEP+TceMEP+Free EMG+Trig- ger EMG+PediculeScrew+BCR

**For more, please contact us:**

**Diagnostic:** EEG, EMG

**Surgical monitoring:** Cynapse IONM, Smart IONM

**Rehabilitation:** Biofeedback system, Micro-current stimulator, Surface EMG system

