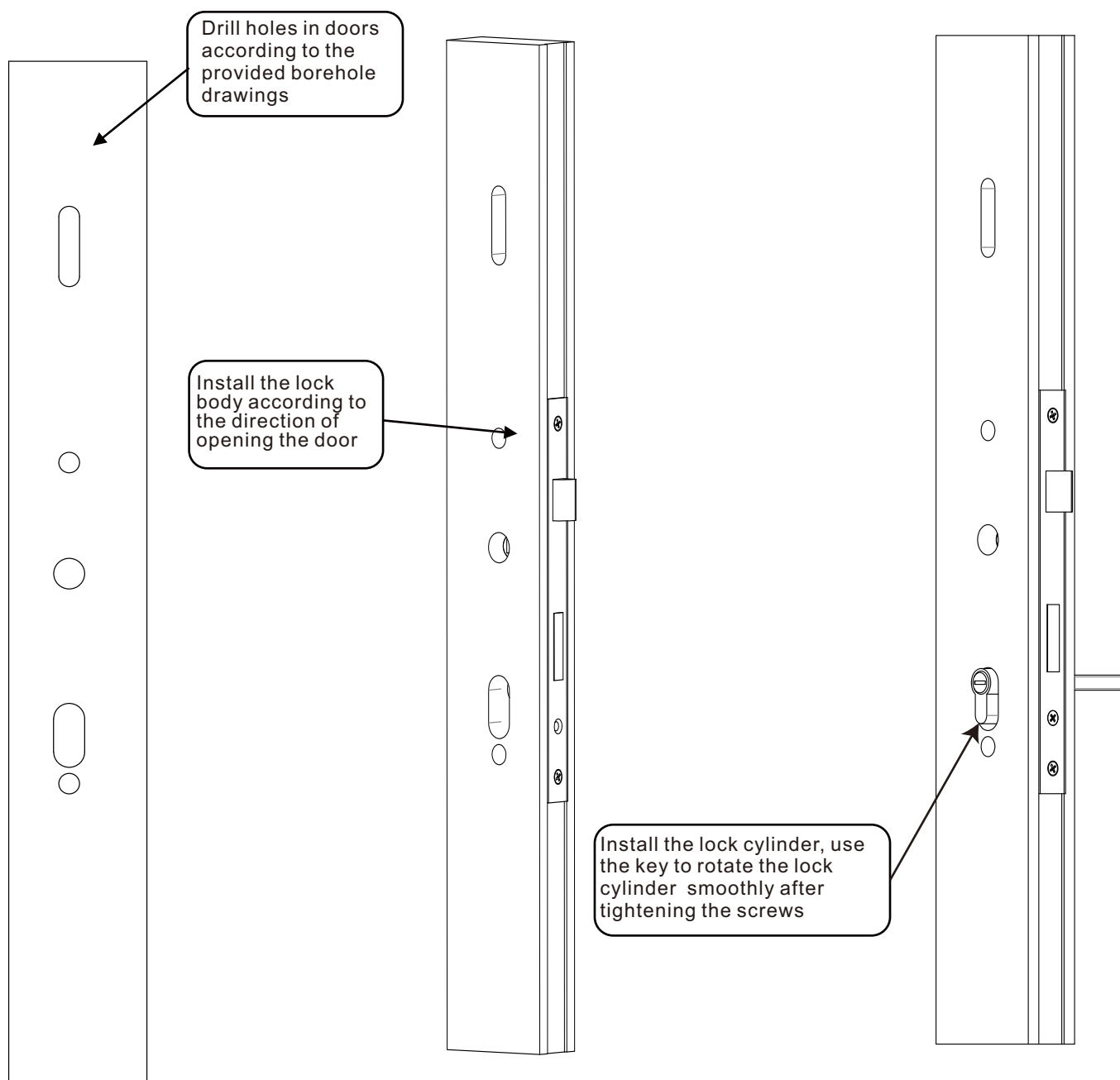
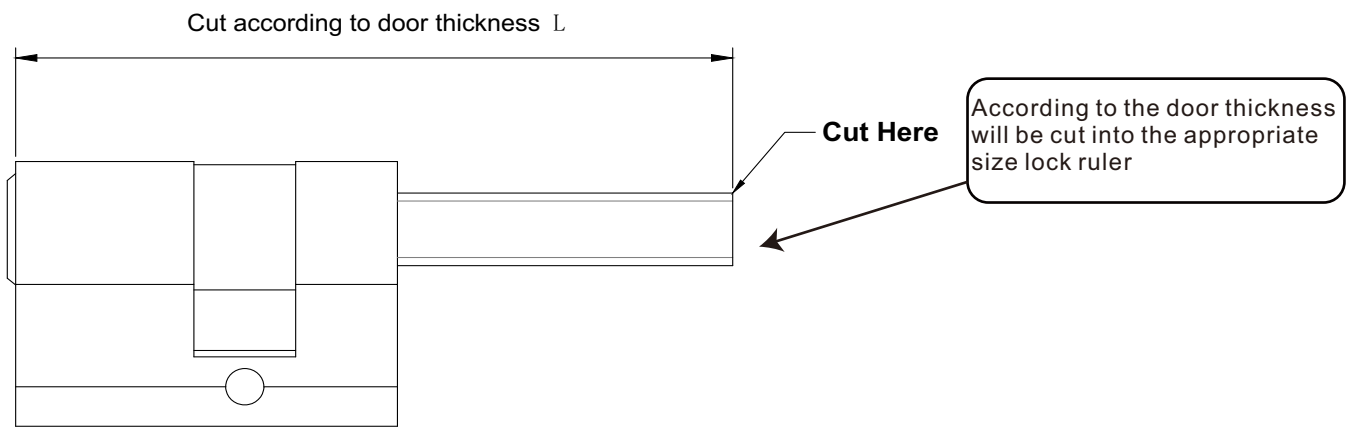


# Automatic Narrow Body Smart Lock Manual

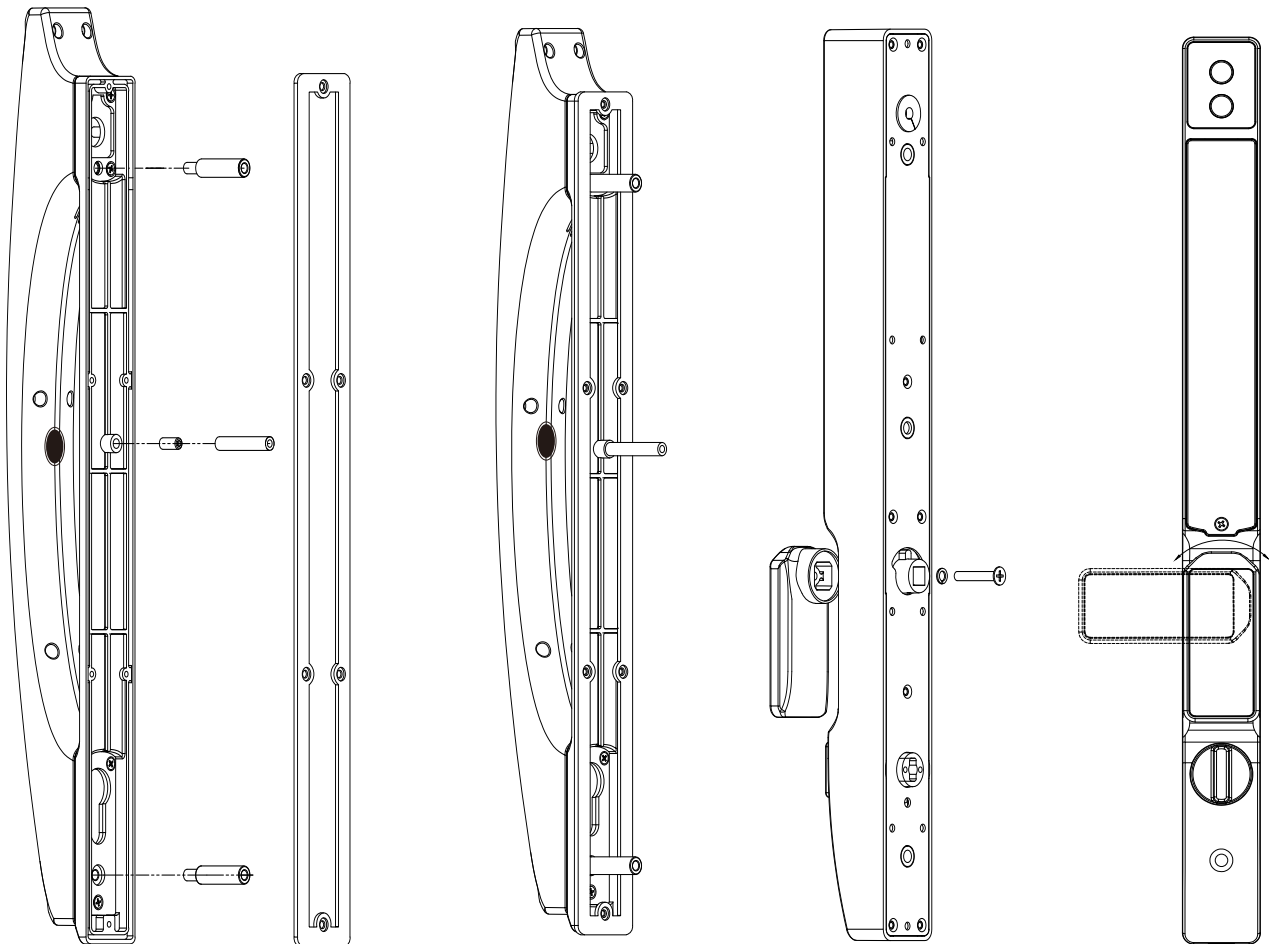


# Installation



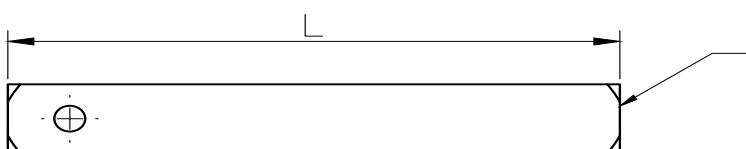


Cut according to door thickness  $L = (\text{door thickness}/2) + 38$



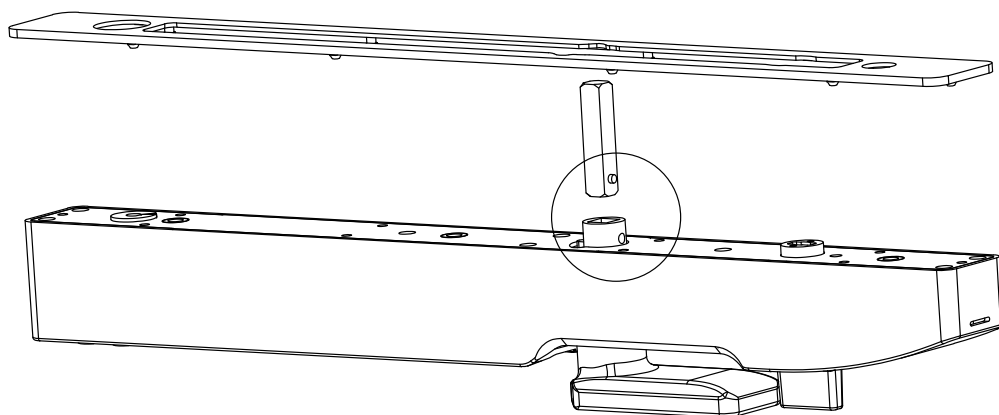
5. Screws and studs will be tightened to the front panel as shown in the figure

6. According to the way to open the door if the sliding door can be placed vertically handle.

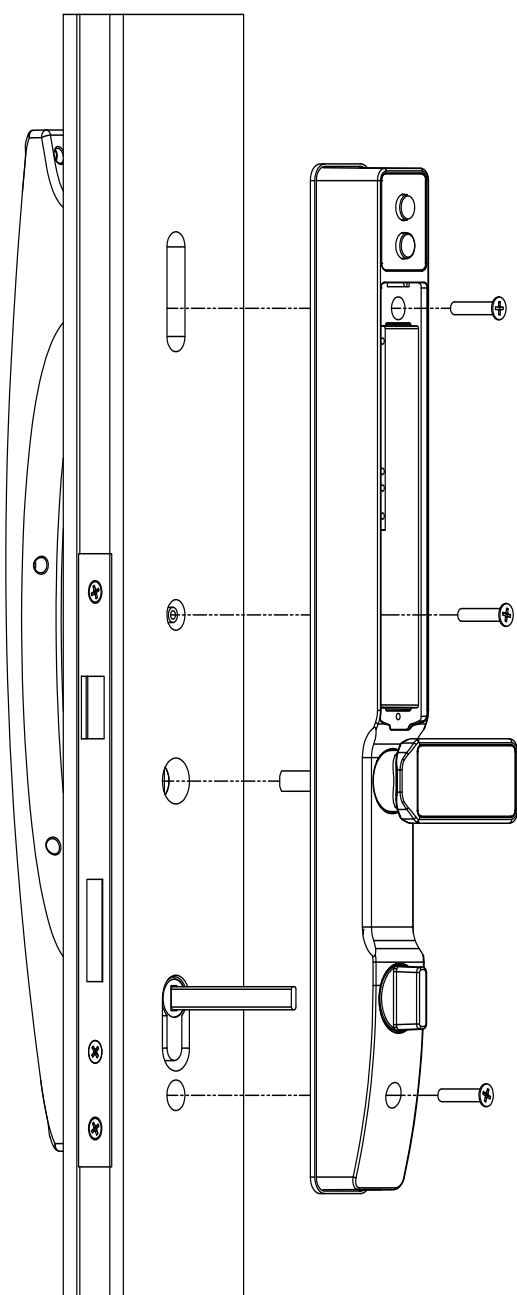


7. Cut the square steel according to the thickness of the door, the specific formula as shown

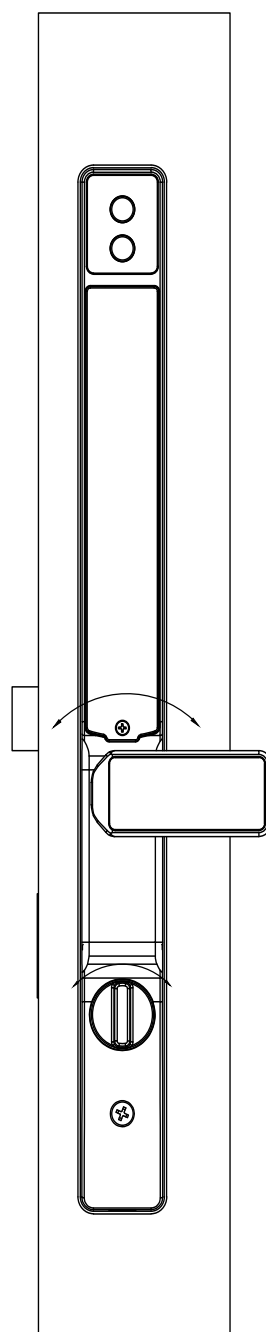
Length of square steel  $L = (\text{door thickness}/2) + 12$



8. As shown in the figure will be square steel inserted into the panel for the position, and installed on the silicone pad.



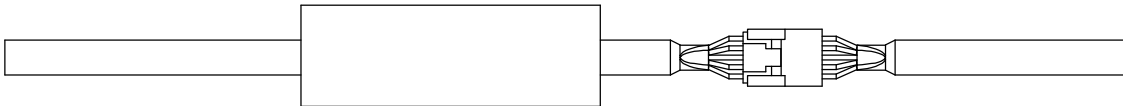
9. Put the screws into the corresponding holes first without tightening, adjust the position of the panel so that the panel is parallel to the edge of the door, lift and down the handle smoothly, knob clockwise rotation smoothly after tightening the screws to test whether the function is normal.



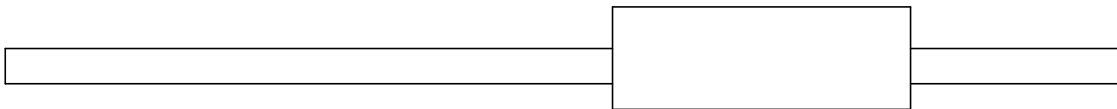


## Heat shrink tubing

To provide better waterproof performance, we offer black heat shrink tubing (included in the accessory package or already placed on the wire). The following is the instructions for use.



If the heat shrink tubing is not installed, first insert the heat shrink tubing onto one side of the wire, and then connect the plug.



Move the heat shrink tubing to the fully covered plug position, use a lighter or heat gun to heat the tubing and fully tighten the wrapped joint and the wires at both ends of the joint.



Multi language settings : Wake up the screen, enter "1200#" to set, enter the corresponding code, and press the # key to confirm.

1201 Chinese; 1202 English; 1203 Turkish; 1204 Russian; 1205 Portuguese;  
1206 Vietnamese; 1207 Spanish; 1208 Indonesian; 1209 French;  
1210 Mongolian (display in English); 1211 Arabic (display in English);  
1212 Persian (display in English);

# Function Description

## I .Setting menu (If no administrator has been added, enter 888 and press the # key to enter the settings menu)

1. LockSet Set to [HOOK] if it is double hook lock body, otherwise keep default [Mach].
2. Direct Set Left turn or Right turn as the lock tongue stretching direction.
3. Torque There are Low,Mediu,Hight in setting list,set to low if it is a sliding door,set as need if it is a pull-push door.
4. Invert Keep default, no need to change.

## II .Restore factory settings

Press“0”and“#”button to enter settings menu

- ◆ System query-->Factory reset-->Press"#" to confirm.
- ◆ After the voice broadcasts "initialization successful", all content is cleared (note: recorded information will not be cleared); After initialization, any fingerprint, card, or password (123456) can unlock the lock.

## III .User Manage

9 administrators can be added, with one type of face ID, fingerprint, IC card, password, etc. The administrators are numbered 001-009. Normal users, guest users, and coerce users are 010-200.1.Add Admin, press “0” and “#” button to enter settings menu;

- ◆ User Manage-->Create User-->Administrator

(1Enroll FngPswT 2Enroll FaceID 3Enroll Palm Ve) operate as prompts

Note: When inputting a face ID, please face the face recognition module and rotate head according to the voice prompts. After completing the input, the voice prompts "input successfully". The distance from the machine is about 0.5-1 meters. If it is too close or too far, the machine will fail to operate. Do not rotate too much. If the rotation is not standardized, the machine will fail to operate. Input face ID without bystanders and do not cover the face.

- 2.Add User, at least one administrator must be added. the operation is the same as above.
- 3.Delete User, delete the user according to the user number input, or delete all users.

## IV .Remote management (Corresponding circuit board module need be installed first)

1. Add remote users (Remote Manage-->Add APP User) Search and download Tuya App in appstore  
Mode: 1.WIFI, 2.AP;  
Press ‘1’ , Add APP user in WIFI mode.  
Press ‘2’ , Add APP user in AP mode.
2. Delete APP users, press ‘2’ will delete all APP users.
3. Add remoter (Remote control module needs to be installed)  
Press ‘3’ , aim the remote control at lock, press any key of the remote control to add remoter.
4. Delete remoter (Remote control module needs to be installed) Press ‘4’ , all remoter users will be deleted.

## V .System settings

Voice prompts: 1Time Setting 2Volume Setting 3 Unlock setting 4Body Detect

#### 1. Time setting

press number to input time, for example, the current time is 10:30 am on Jan 1 2023. Input 202301011030 and press '#' to confirm;

#### 2. Volume setting (Follow the prompts to operate)

#### 3. Unlock setting (Follow the prompts to operate)

Press the '1' key to set unlock time, which can be set to 2-9 seconds;

Press the '2' key to set delay locking. select 0 (off), or set the time level to 5/10/15/25/30 seconds;

Press the '3' key to activate or deactivate the anti pry alarm function;

Press the '4' key to enable or disable the multiple unlocking. The multiple unlocking function is only effective for normal users;

#### 4. Body Detect

Press the '1' key to set body detect. It can be set to 'off', 'near', or 'far';

Press the '2' key to set stay capture function to 'on' or 'off', it needs be used in conjunction with the TUYA intercom function;

Press the '3' key to activate or deactivate the stay alarm function, which needs to be used in conjunction with the TUYA intercom function;

### VI. System Query

Voice prompts: 1Record Manage 2Storage Info 3Factory Reset

#### 1. Record Manage

Press the '1' key to query by order, and view locking, unlocking and doorbell records, press '2' to page up and '8' to page down;

Press the '2' key, query by date, and view locking, unlocking and doorbell records based on the specified date input, press '2' to page up and '8' to page down;

Press the '3' key to delete all locking, unlocking and doorbell records;

#### 2. Record Manage

Press the '1' key to manage information and view the number and types of administrator users;

Press the '2' key to access user information and view the number and types of regular users;

#### 3. Factory Reset

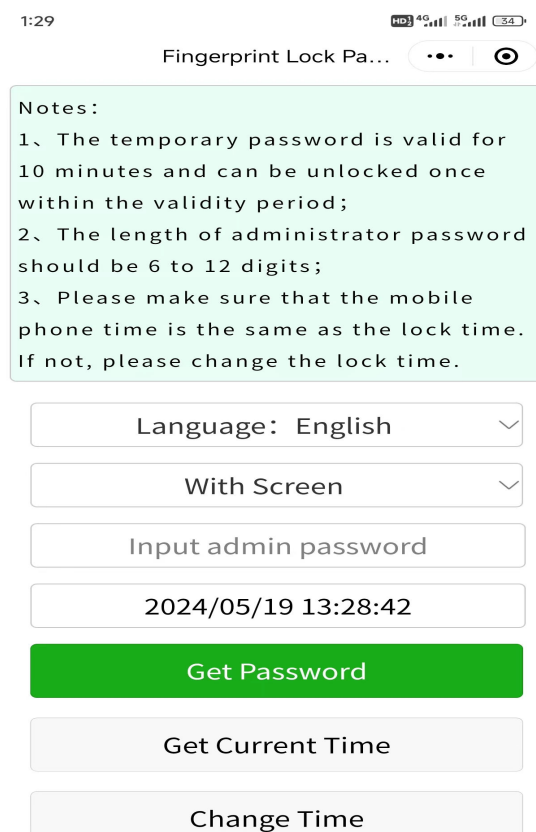
### .WeChat mini program

1. Before using the WeChat mini program, the lock time must be adjusted to be as precise as the phone time to minute. After enter the time setting menu. For example, the current phone time is 11:43 am on April 3, 2023. Input 2304031143 (year/month/day/hour/minute) and press #key to confirm (This step is quite important)

2. Search WeChat mini program on wechat“指纹锁密码”

3. Get current time in mini program

4. Select "With Screen", enter administrator password, tap Get Password, input the password generated by mini program into the lock to unlock. (If it does not work, try to choose "No Screen")



1:29 HD 4G 5G 54

Fingerprint Lock Pa...

Notes:

- 1、 The temporary password is valid for 10 minutes and can be unlocked once within the validity period;
- 2、 The length of administrator password should be 6 to 12 digits;
- 3、 Please make sure that the mobile phone time is the same as the lock time. If not, please change the lock time.

Language: English

With Screen

Input admin password

2024/05/19 13:28:42

Get Password

Get Current Time

Change Time

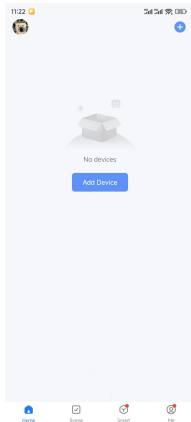
## VIII.Remote unlock setting (Optional)

### 1.Network connection



Scan this qr-code to download the app

You can also search for "TUYA" in the app store to download and install it. during use, the app will request permissions for push messages, Bluetooth, location tracking, etc. Please click agree.



1.After successfully logging in, tap "Add Device" or "+" button in the upper right corner



Reset the device

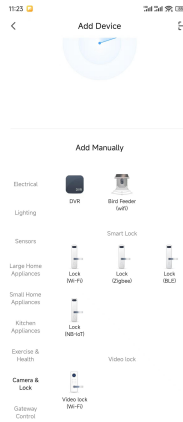


Power on the device and confirm that the smart door lock works normally.

Confirm the indicator is blinking rapidly.

Reset Device Step by Step

4.After entering this interface, operate on the smart lock by verifying the administrator, selecting "Remote Manage", "Add APP User", and choosing "1.WIFI" After confirming that the light below the smart lock keyboard is flashing, click "Confirm the indicator is blinking rapidly" on your phone.



2. Scroll down to find "Camera&Lock" and select "Lock (Wi-Fi)"

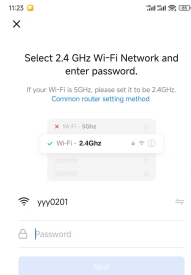


Select the status of the indicator light or hear the beep.

AP Mode

EZ Mode

5. Select "EZ Mode"



3. Select WiFi and enter the password, click next



Connecting Device

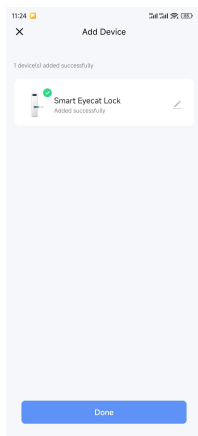
Keep the network stable.



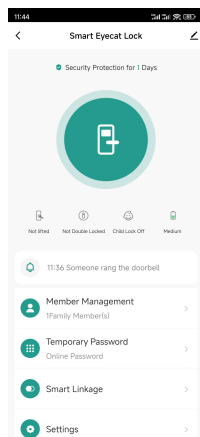
01:57



6. Wait for connection

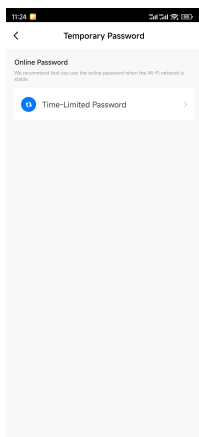


7. Connection completed, click "Done"

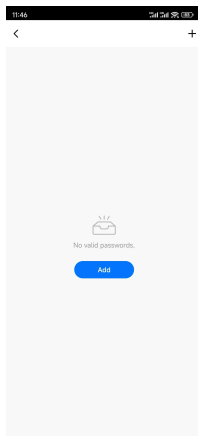


8. Remote management page

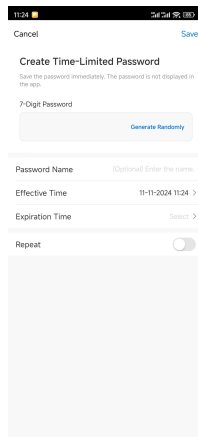
## 2. Temporary Password



1. Tap "Temporary Password" and "Time-Limited Password" on the remote management interface

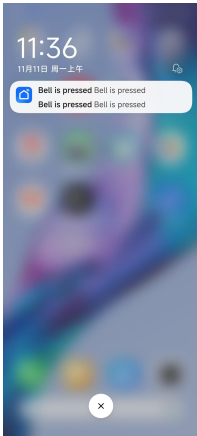


2. Tap the "Add" or "+" button in the upper right corner

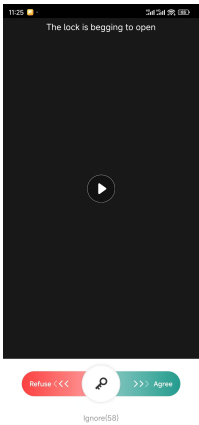


3. Enter or generate a temporary password, select the expiration time, click "Save" (turn on the "Repeat" switch, you can set the temporary password to take effect for a specified period of time on certain days of the week). After setting, you can enter the password on the smart lock to unlock.

### 3.Remote intercom



1.After pressing the doorbell button on the smart lock, the phone will receive app push notifications



2.Click the play button in the center of the screen to start video intercom, and use the slider at the bottom of the screen to unlock or refuse to unlock.



3.After the video intercom is connected, you can click on the microphone icon in the middle below to start the phone intercom, and click again to stop the phone intercom.

# Warranty card

Dear users, first of all, thanks for choosing our company's products, in order to make you are more satisfied with our services. Please read, fill in, and save this warranty card.

User name: \_\_\_\_\_ Contact No: \_\_\_\_\_

Contact address: \_\_\_\_\_

Product model: \_\_\_\_\_ Product color: \_\_\_\_\_

Purchase date: \_\_\_\_\_ Dealer name: \_\_\_\_\_

Contact No.: \_\_\_\_\_

Contact address: \_\_\_\_\_