

特别说明:

图册内容仅供参考,实际以最终成品为准!
最终解释权归属本公司!

天筑致 广告策划 / 180 2934 3340

LUYISI 路易丝·门窗



广东省 佛山市 南海区

E-mail: l-y-smc@139.com

Fax: +86-0757-81196198

www.l-y-s.cn

☎ 400-8383-208





ABOUT US 关于我们

LUYISI brand originated from France. It is the symbol of royal nobility and the embodiment of art and culture.

LUYISI door and window brand was introduced from France in 2012. The company headquarters is located in LUYISI Industrial Park, Shishan town, Nanhai District, Foshan City, Guangdong Province. It is a company specializing in the R & D, production and sales of French system doors and windows.

The company has more than 30000 square meters of modern industrial production plants and a five-star product experience center. The company has introduced European advanced equipment and production process, and is equipped with a professional technical and management team.

LUYISI people have been focusing on the enterprise tenet of "customer first, quality first, people-oriented, honest management, and win-win cooperation", creating fruitful results one after another, and are known as a new generation of benchmark brand in the door and window customization industry.

路易丝品牌源于法国，是皇家贵族的象征，是艺术和文化的化身。

路易丝门窗品牌于2012年从法国引进，公司总部座落于广东省佛山市南海区狮山镇路易丝工业园，是一家专业从事法式系统门窗研发、生产、销售为一体的公司。

公司拥有30000多平方现代化工业生产厂房、五星级产品体验中心，公司引进了欧洲先进设备和生产流水工艺，同时配备了专业的技术和管理团队。

路易丝人一直围绕着“客户第一、质量第一、以人为本、诚信经营、合作共赢”的企业宗旨，创造了一个又一个丰硕的成果，被誉为门窗定制行业的新一代标杆品牌。

DEVELOPMENT HISTORY

发展历程

2007

公司成立，并在佛山官窑建立 2000 m² 工业厂房，开始门窗研发和生产。

The company was established and a 2000 square meter industrial plant was built in Guanyao, Foshan, to begin research and production of doors and windows.

2008—2011

引入国际先进生产设备，建立先进的研发部，申请多项专利技术。

Introducing internationally advanced production equipment, establishing an advanced R&D department, and applying for multiple patented technologies.

2012

吴传安总经理受邀请到法国考察建筑设计，深受当地文化感染，创立路易丝门窗品牌。

于 2012 年夏，成立佛山市路易丝门窗有限公司。

路易丝商标注册成功。

General Manager Wu Chuan'an was invited to visit France to inspect architectural design, deeply influenced by local culture, and founded the LUYISI doors and windows brand.

In the summer of 2012, Foshan Luyisi Doors and Windows Co., Ltd. was established.

LUYISI trademark registration successful.

2013—2014

建立门窗系统研发设计团队。

重资引入五条意大利飞幕生产线，并投入生产。

Establish a research and design team for door and window systems.

Heavy investment has introduced five Italian air curtain production lines, And put it into production.

2015

公司生产规模扩大至 10000 m²，五个车间全线开工，路易丝系统门窗上市。

同年首次参加广州琶洲广交会。

The company's production scale has expanded to 10000 square meters, All five workshops have started construction, and LUYISI system doors and windows have been launched.

I participated in the Guangzhou Pazhou Canton Fair for the first time in the same year.

2016

路易丝门窗品牌战略转型，开启连锁加盟模式，全年招商 128 家。

荣获“铝合金绿色环保产品”荣誉。

LUYISI doors and windows brand strategic transformation, opening a chain franchise model, attracting 128 merchants throughout the year.

Received the honor of "Aluminum Alloy Green Environmental Protection Product".

2017

路易丝系统门窗正式进入东南亚国家等海外市场。路易丝门窗产品荣获“中国著名品牌”“3A 级重信用门窗企业”荣誉。

LUYISI system doors and windows officially enter Overseas markets such as Southeast Asian countries. LUYISI doors and windows products won the award Famous Chinese brand 3A level heavy credit door and window enterprise honor.

2018

6S 生产管理全面升级，门窗实现生产标准化。多个自主研发门窗产品和工艺申请通过多项专利申请。

斥资百万打造 1000 多 m² 五星级门窗体验馆。建立路易丝系统门窗全国统一店面形象。

6S production management has been comprehensively upgraded, and doors and windows have achieved standardized production. Multiple independently developed door and window products and processes have passed multiple patent applications.

Spending millions to build a five-star door and window experience hall of over 1000 square meters. Establish a nationwide unified store image for LUYISI system doors and windows.

2019

路易丝品牌升级，建立路易丝系统门窗商学院，全面赋能终端。

业务量增长率突破 100% 至 120%，生产规模扩大到 20000 多 m²。

荣登央视门窗品牌广告。荣获德国罗森海姆学院认证。

LUYISI brand upgrade, establishment of LUYISI System Doors and Windows Business School, fully empowering terminals.

The growth rate of business volume has exceeded 100% to 120%, and the production scale has expanded to over 20000 square meters.

Listed in CCTV's doors and windows brand advertisement. Received certification from Rosenheim Institute in Germany.

2020

营销战略转化，与海外市场深度合作，建立海外战略联盟。

荣获“国家十大新锐门窗品牌”荣誉。

Marketing strategy transformation, deep development cooperation with overseas markets, and establishment of overseas strategic alliances.

Awarded the honor of "Top Ten National Emerging Doors and Windows Brands".

2021

全国加盟经销商门店和代理商超过 500 家。

荣获

“中国系统门窗品牌”

“质量服务 AAA 级诚信单位”

“企业信用评价 AAA 级信用企业”

等多项荣誉。

路易丝 VI 形象品牌全面升级，安哥拉红成为路易丝 VI 主体色彩。

There are over 500 franchise dealerships and agents nationwide.

awarded Chinese System Doors and Windows Brands AAA level integrity unit for quality service Enterprise Credit Rating AAA Credit Enterprise Waiting for multiple honors. LUYISI VI's brand image has been fully upgraded, Angora red has become the main color of LUYISI VI.

2022

与中广深设计院强强联合，打造路易丝门窗品牌 VI 2.0 形象系统。

全新体验式智能展厅正式上线，融入未来家居科技智能新概念。

荣获中品榜“中国十大系统门窗品牌”荣誉。

全新 VI 形象品牌 LOGO 注册成功。

Strong alliance with Zhongguang Shenzhen Design Institute to create LUYISI doors and windows brand VI 2.0 image system. The new experiential intelligent exhibition hall is officially launched, Integrating new concepts of smart home technology into the future.

Awarded the "Top 10 System Doors and Windows in China" on the China Quality List Brand honor.

The new VI image brand logo has been successfully registered.

2023

签约芒果卫视旗下芒果文化传媒，达成战略合作，重资投入线上传媒引流。

新媒体 +AI 招商发展，深入布局海外市场，成功打造门窗国际营销新方向。

连续 2 年荣获中品榜“中国十大系统门窗品牌”荣誉。

Signed a strategic partnership with Yimang Culture Media, a subsidiary of Mango TV, and invested heavily in online media to attract traffic.

New media+AI business development, in-depth layout of overseas markets, successfully creating a new direction for international marketing of doors and windows.

For two consecutive years, it has been honored as one of the "Top Ten System Doors and Windows Brands in China" on the China Quality List.

2024

中东市场、东南亚市场、欧美市场的全面开拓发展。

国内新商的爆发式增长，路易丝门窗着手布局新厂区。

连续 3 年荣获中品榜“中国十大系统门窗品牌”荣誉。

Comprehensive development of the Middle East market, Southeast Asian market, and European and American markets.

The explosive growth of domestic new businesses has prompted LUYISI Doors and Windows to lay out new factory areas.

For three consecutive years, it has been honored as one of the "Top Ten System Doors and Windows Brands in China" on the China Quality List.

2025

喜迁超 300000 m² 生产基地，2000 m² 多功能新展厅。

超过 50000 家家庭用户认证，40 多项企业荣誉和专利，500 多家经销商布局。

荣获：

IOS9001 国际认证

CE 国际认证

全系产品英文版质量认证

成功开发数十款海外产品。

Xiqian has a production base of over 300000 square meters and a new multi-functional exhibition hall of 2000 square meters.

More than 50000 household user certifications, over 40 corporate honors and patents, and over 500 distributor layouts.

Awarded: IOS9001 International Certification CE International Certification English version quality certification for all products in the series

Successfully developed dozens of overseas products.

CERTIFICATE OF HONOR

荣誉证书

用实力认证, 质量放心值得信赖, 我们的每一件产品均符合行业标准, 质量看得见。

Verified by our strength, our quality is reliable and trustworthy. Each of our products meets industry standards, and the quality is visible.



FIVE CHARACTER SAFETY ESCORT

五性安全护航

以工艺精度定义安全标准, 每一道接缝都是对品质的偏执,

选用顶级断桥铝材, 历经27道工序淬炼, 精益求精, 确保每一个出品佳属精品。

多种安全配置, 360°立体防护, 无处不在的安全性, 安全看得见, 给您一个安全的家。

Defining safety standards based on process precision, every seam is a obsession with quality. We use top-quality broken bridge aluminum materials, undergo 27 processes of tempering, and strive for excellence to ensure that every product is of the highest quality.

A variety of security configurations, 360° three-dimensional protection, ubiquitous security, safe to see, give you a safe home.



抗风压 / Wind pressure resistance
高硬度铝材和汽车及钢化玻璃的结合, 打造抗风压9级5.0KPa的性能王者。



水密性 / Water tightness
独立排水腔设计, 恶劣天气依然畅通排水, 不惧狂风暴雨, 超600Pa5级性能。



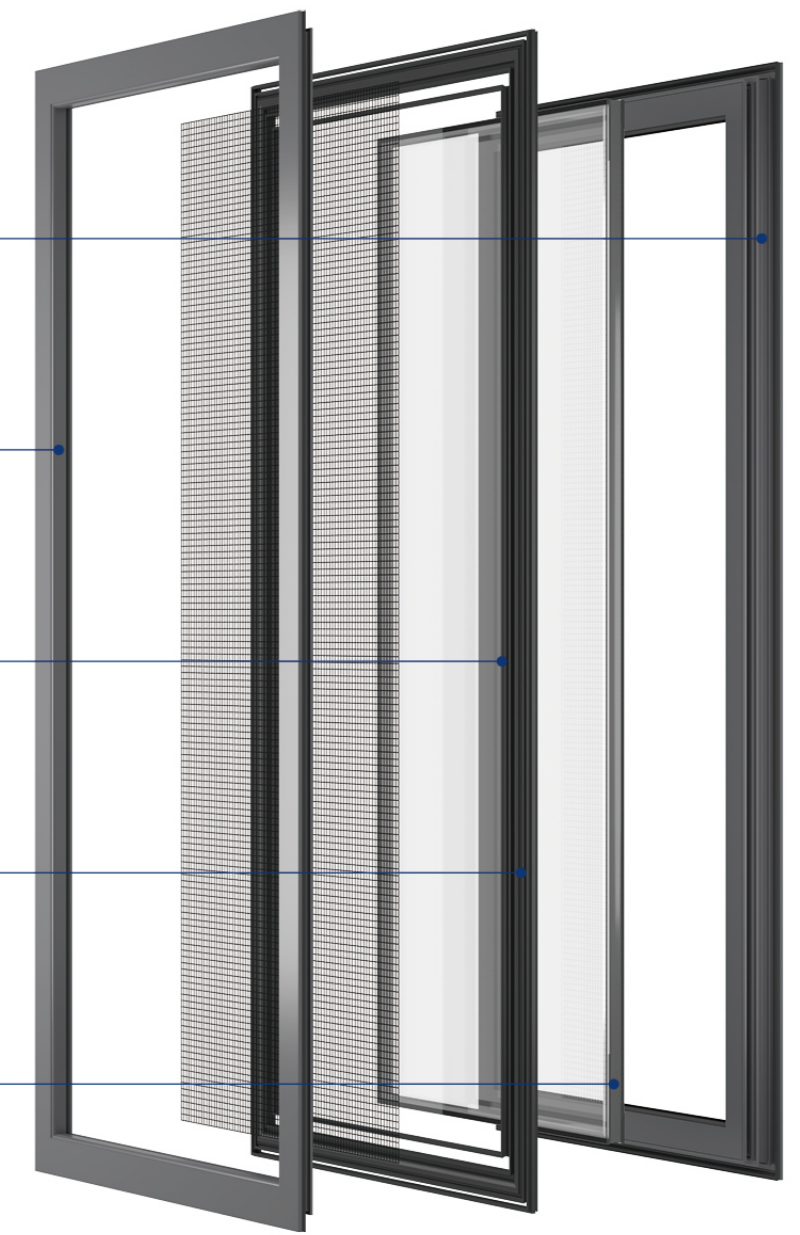
气密性 / Air tightness
采用三元乙丙汽车级密封胶条, 正负气压可至±8级。



保温性能 / Thermal insulating property
采用PA66断桥隔热条+多腔体结构, 把温度锁在型材内, 隔断室外高温传递, 传热系数K值达1.8w/m²·K



隔声性能 / Sound insulation
采用中空钢化玻璃, 中空可充入惰性气体, 有效降低噪音38dB以上, 4级效果。



TRIPLE GLUE

PROCESS

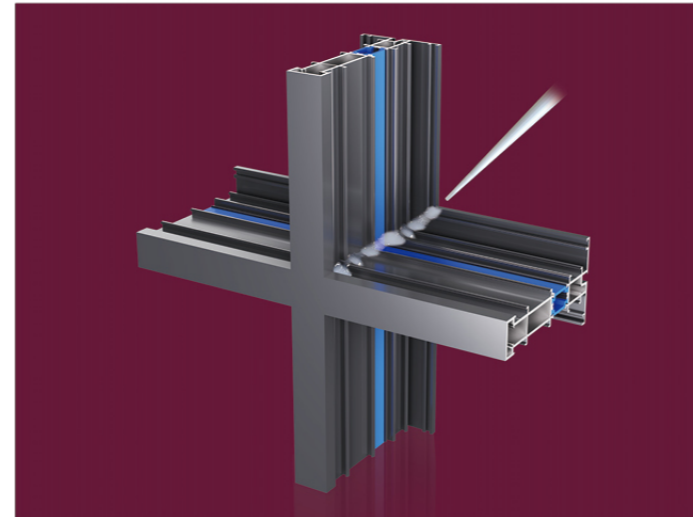
三胶工艺

MIDDLE COLUMN LEVELING ADHESIVE

中柱流平胶工艺

对中柱连接处打密封胶，
自动渗透细小缝隙（<1mm）形成自流胶密封，
密封性能更强。

Apply sealant to the joint of the middle tenon,
Automatically penetrate small gaps (<1mm) to form a self
sealing adhesive,
Stronger sealing performance.

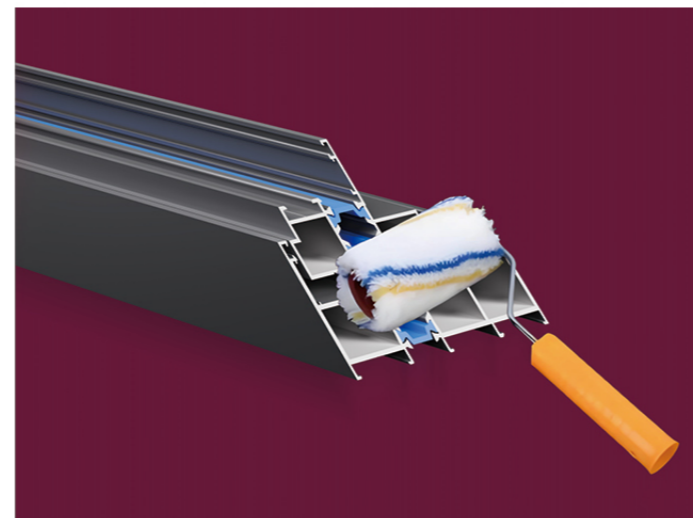


SECTIONAL ADHESIVE

断面胶工艺

填充型材组角时的缝隙，
起到防水、防渗、隔汽和增强结构密封性的作用。

The gaps when filling the corners of the profile group,
Plays a role in waterproofing, anti-seepage, vapor barrier, and
enhancing structural sealing.

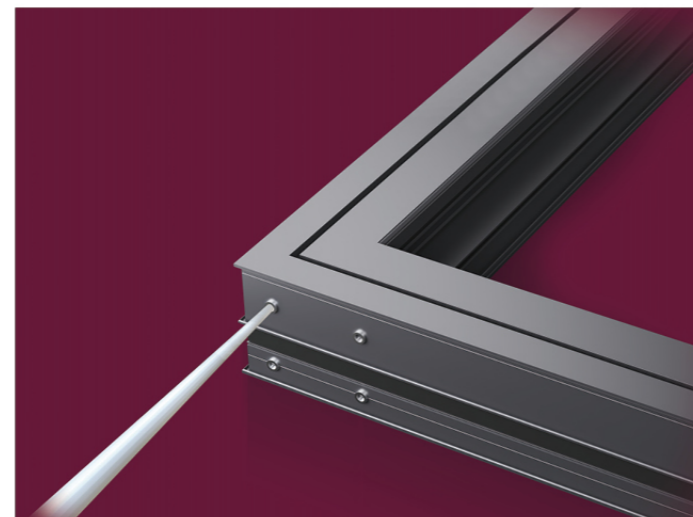


CORNER INJECTION GLUE

组角注胶工艺

通过在角码与型材连接处注入专用组角胶，
显著提升门窗角部的结构强度、密封性和整体稳定性。

By injecting specialized corner glue at the connection
between the corner code and the profile,
Significantly improve the structural strength, sealing
performance, and overall stability of door and window
corners.

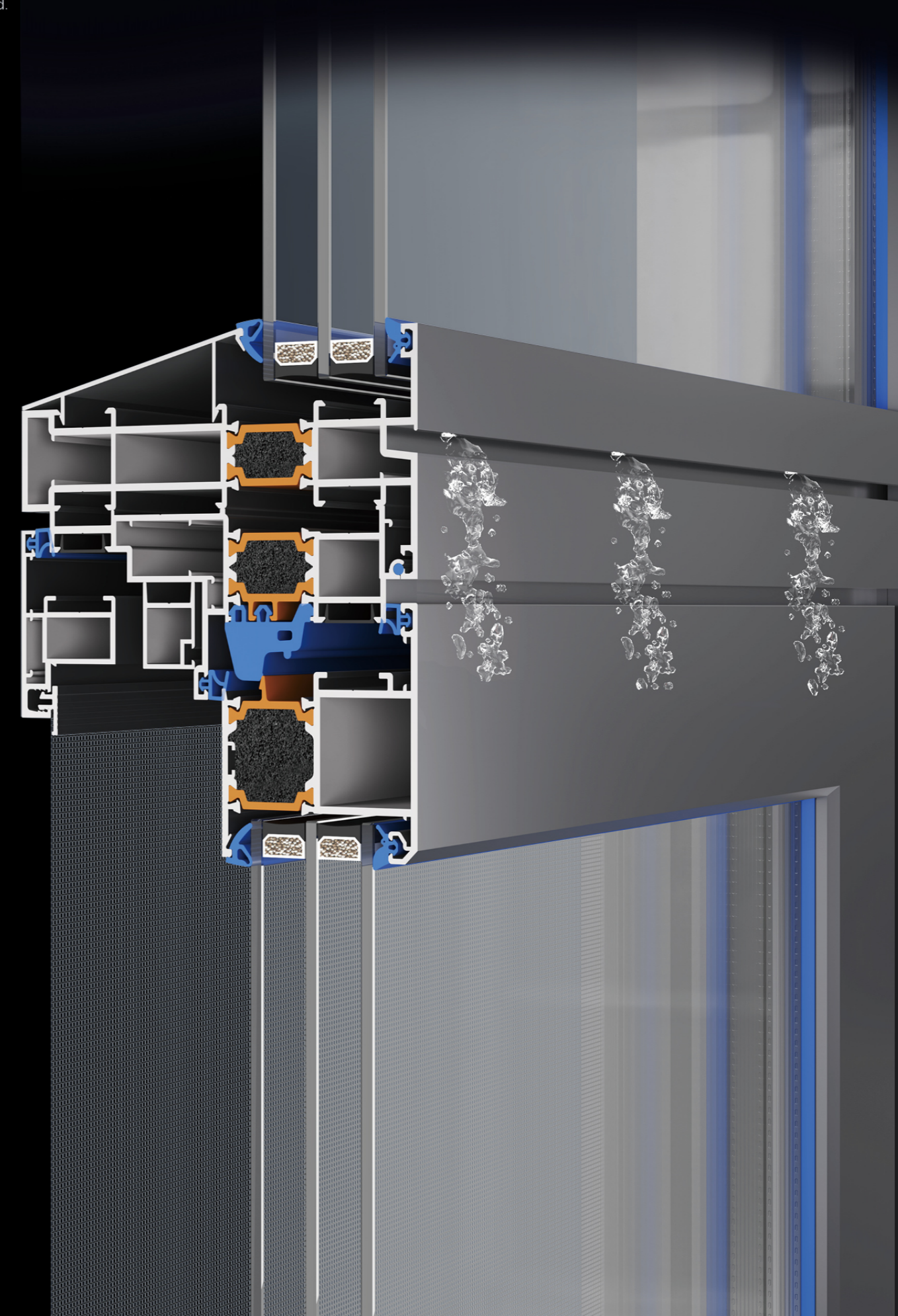


内外平框多腔体隐形排水结构

Inner and outer flat frame multi cavity
invisible drainage structure

窗扇和窗框平齐，更安全，隐藏式排水孔改为垂直向下，水受垂直向下的重力排出，排出压力大幅提高。

The window sash is flush with the window frame, which is safer. The hidden drain hole is changed to
vertical downward. The water is discharged by vertical downward gravity, and the discharge pressure is
greatly increased.



Enjoy the luxury
Design makes life more artistic

享受轻奢
设计让生活更艺术



INDEXES

产品目录

BLINDS SERIES

百叶系列

60 执手玻璃翻转百叶	011
60*25 框拨手玻璃百叶	012
50 铝手摇可平开铝百叶	013
空调百叶	014

SIDE PRESS WINDOW SERIES

侧压窗系列

120 侧压气密窗	015
-----------	-----

INTELLIGENT ELECTRIC LIFTING WINDOW SERIES

智能电动升降窗系列

120/150 智能电动升降窗	017
-----------------	-----

CASEMENT WINDOW SERIES

平开窗系列

85 微通风系统窗 (可做双内开)	019
凡尔赛 110 断桥平开窗	021
卢森堡 110 断桥平开窗	023
巴塞罗那 110 断桥平开窗 (内置铰链)	025
斯里兰卡 112 断桥平开窗	027
112 极景系统窗	029
113 断桥平推窗 / 门	031
圣彼得堡 120 系统断桥窗	033
65/75/85 系统断桥窗	037

INTELLIGENT ELECTRIC LIFTING WINDOW SERIES

推拉窗系列

卡尔特 118 2.0 六轨断桥推拉窗 (嵌入式)	039
128 悬浮六轨推拉窗	041

PULL UP/FOLDING WINDOW SERIES

提拉窗 / 折叠窗系列

美式提拉窗	043
折叠窗	044

FOLDING DOOR/PT DOOR SERIES

折叠门 / PT 门系列

68 折叠门	045
PT 门	046

SLIDING DOOR SERIES

推拉门系列

150 全景重型推拉门	047
168 重型提升推拉门	049
140 窄边重型提升推拉门	051
45 窄边推拉门	055
16 极窄推拉门	057

SWING DOOR SERIES

平开门系列

52 中窄平开门	059
45X16 极窄平开门	059
40X07 极窄平开门	060

PAVILION SERIES

凉亭系列

翻转百叶凉亭	061
--------	-----

SUNSHINE ROOM SERIES

阳光房系列

100 快装阳光房	063
电动开启阳光房	065

ANTIQUÉ DOORS AND WINDOWS SERIES

仿古门窗系列

仿古窗	067
仿古门	069

60 HANDLE GLASS FLIP BLINDS

60 执手玻璃翻转百叶



60 * 25 FRAME HANDLE GLASS LOUVERS

60*25 框拨手玻璃百叶



50 ALUMINUM

HAND CRANKED FLAT
ALUMINUM LOUVERS

50 铝手摇可平开铝百叶



AIR CONDITIONING

LOUVER

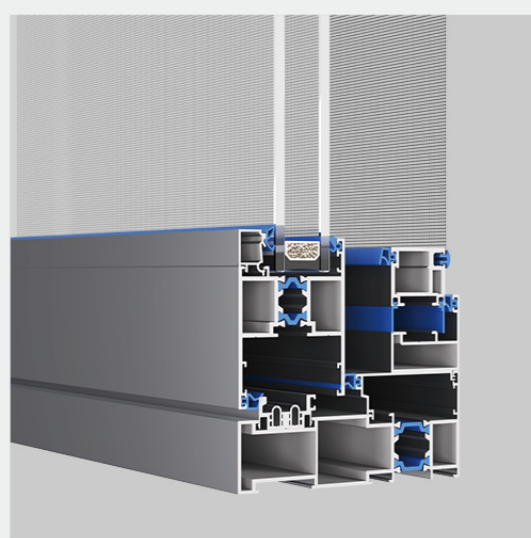
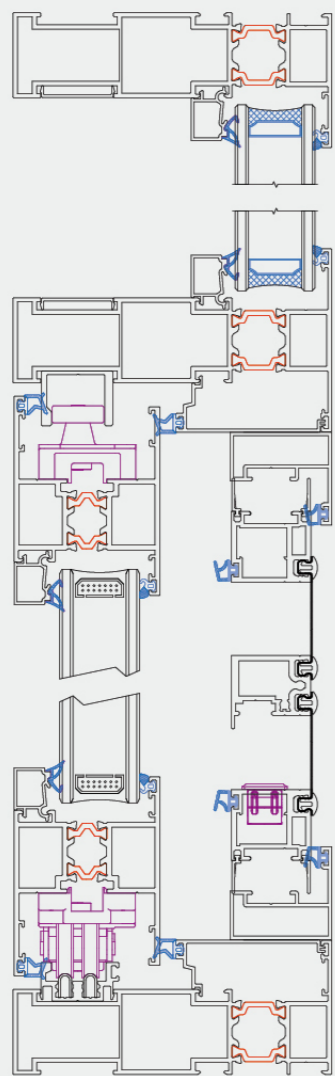
—
空调百叶



120 SIDE PRESSURE SEALED WINDOW

SEALED WINDOW

120 侧压气密窗



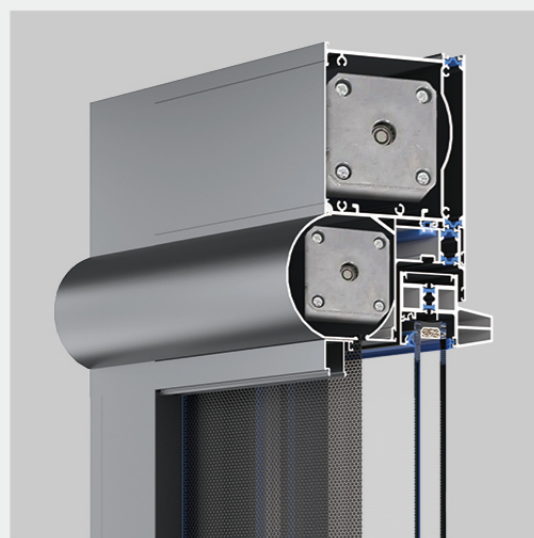
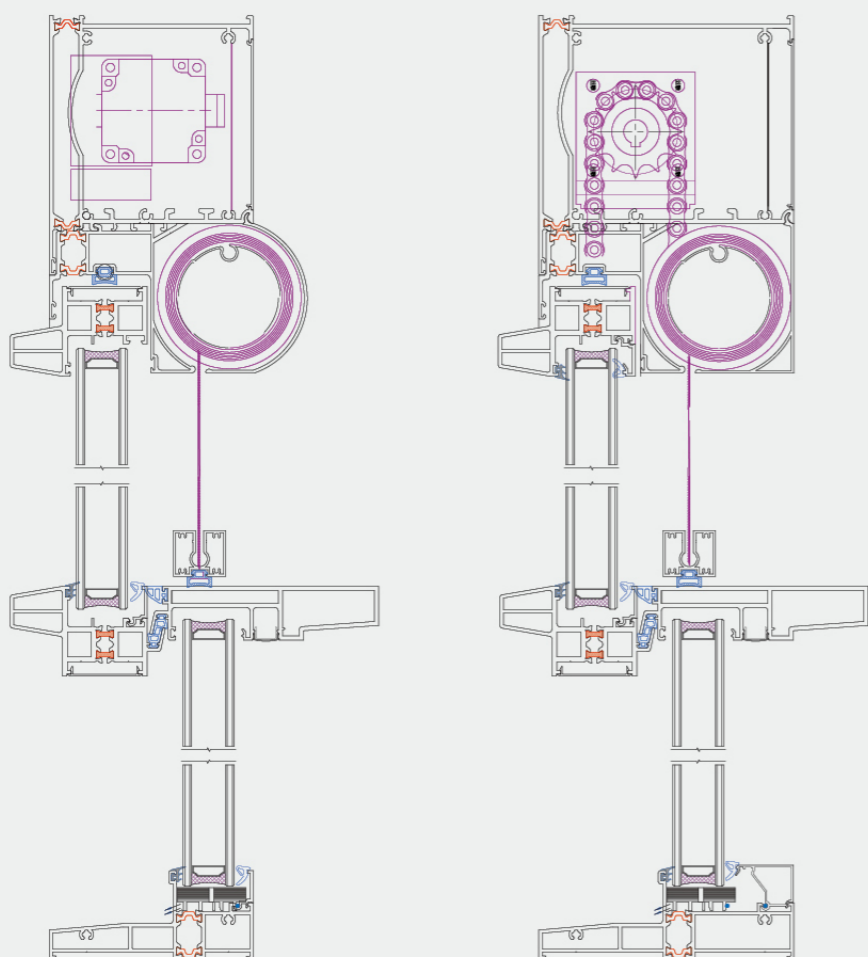
7级 抗风压
4级 水密性
7级 气密性
7级 保温性
38dB 隔音性



120/150 INTELLIGENT ELECTRIC

LIFTING WINDOW

120/150 智能电动升降窗



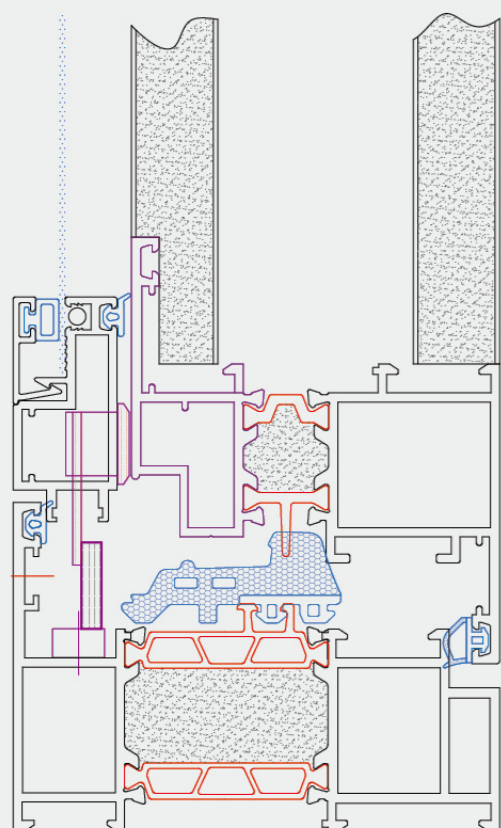
- 8级**
抗风压
- 4级**
水密性
- 7级**
气密性
- 7级**
保温性
- 38dB**
隔音性



85 MICRO

VENTILATION SYSTEM WINDOW

85 微通风系统窗 (可做双内开)



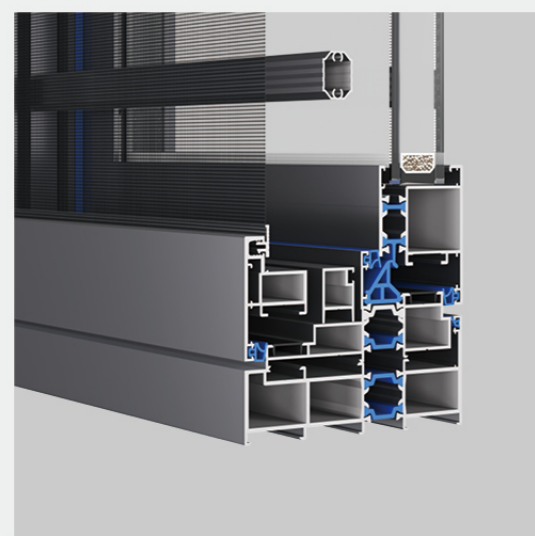
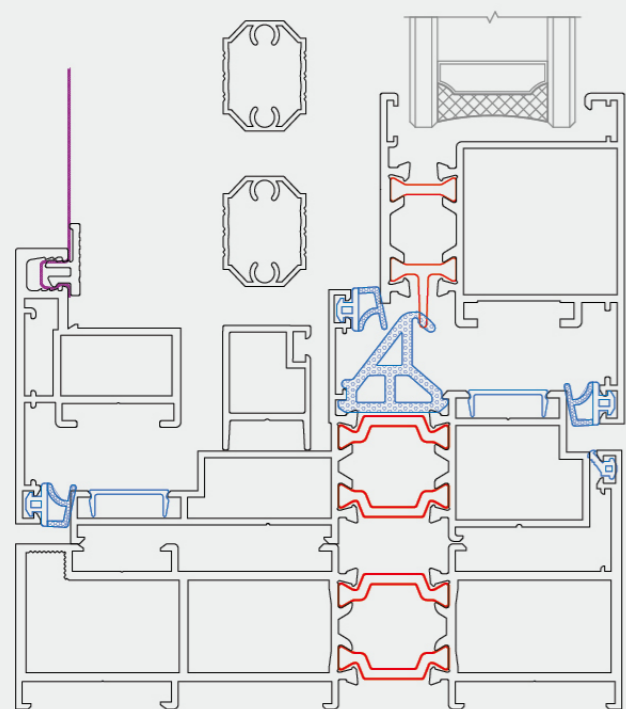
- 8级**
抗风压
- 4级**
水密性
- 7级**
气密性
- 7级**
保温性
- 38dB**
隔音性



VERSAILLES 110

BROKEN BRIDGE CASEMENT WINDOW

凡尔赛 110 断桥平开窗



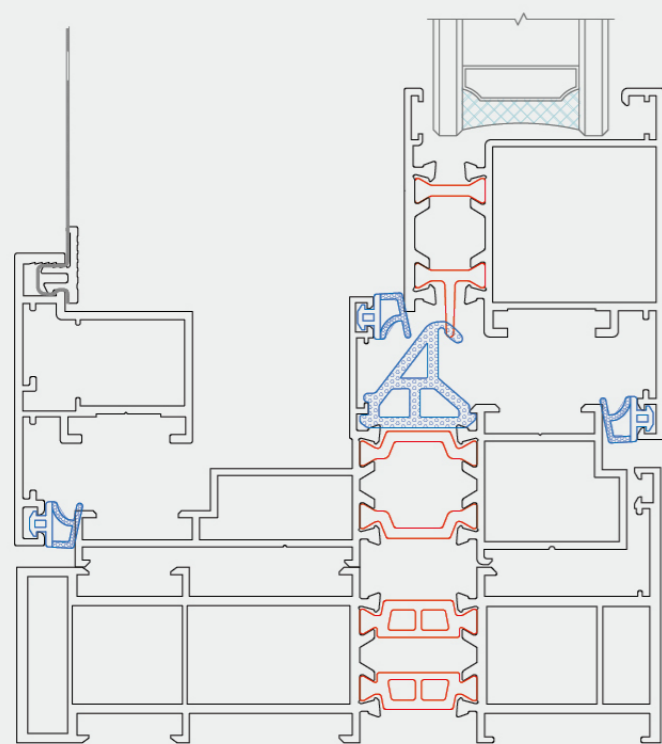
- 8级**
抗风压
- 4级**
水密性
- 7级**
气密性
- 7级**
保温性
- 38dB**
隔音性



LUXEMBOURG 110

BROKEN BRIDGE CASEMENT WINDOW

卢森堡 110 断桥平开窗



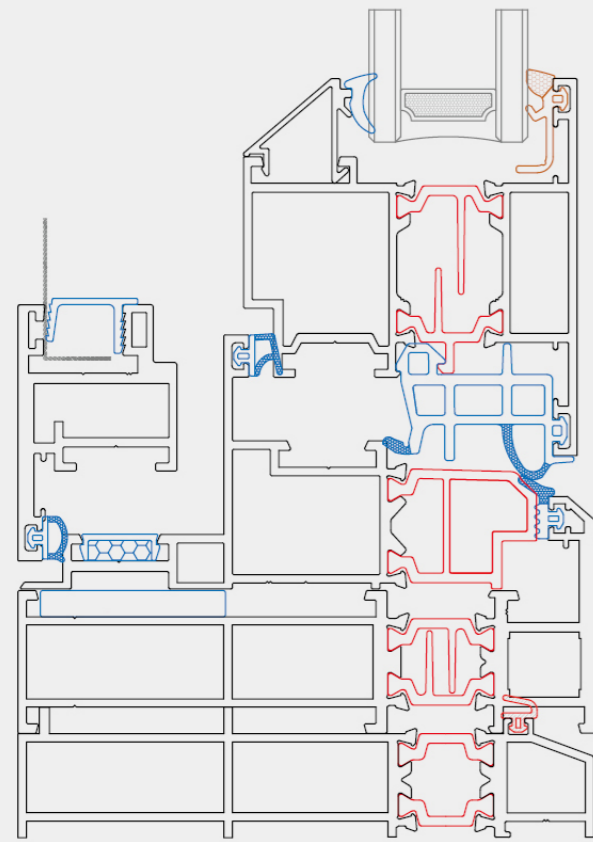
- 8级 抗风压
- 4级 水密性
- 7级 气密性
- 7级 保温性
- 38dB 隔音性



BARCELONA 110

BROKEN BRIDGE CASEMENT WINDOW

巴塞罗那 110 断桥平开窗 (内置铰链)



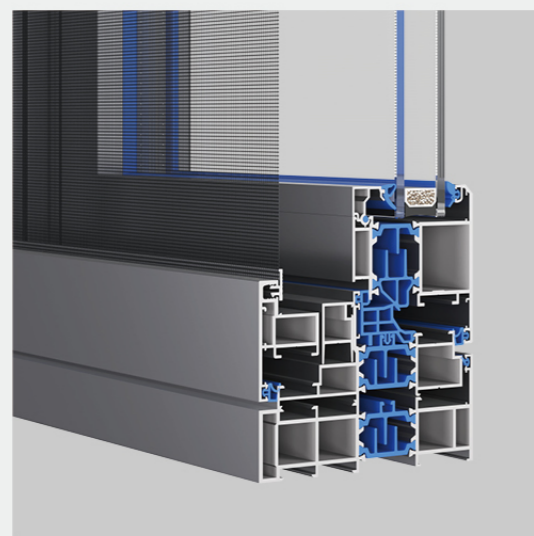
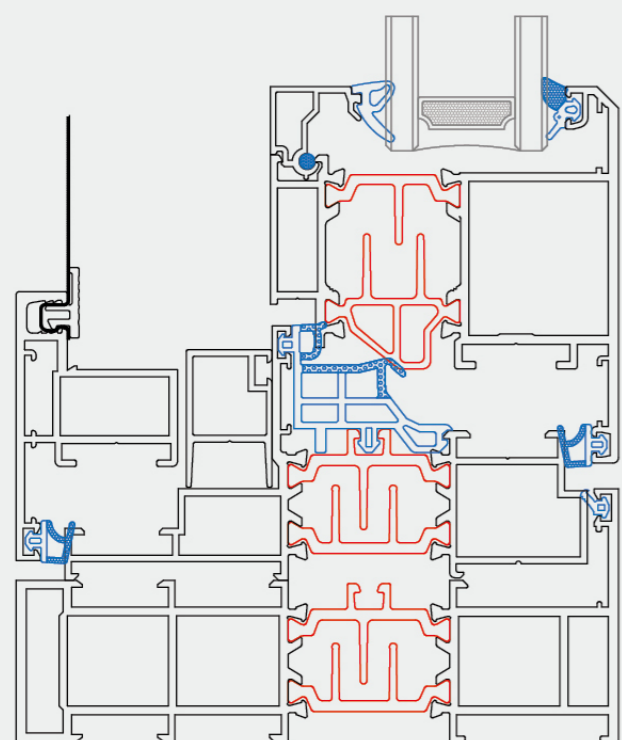
- 8级**
抗风压
- 4级**
水密性
- 7级**
气密性
- 7级**
保温性
- 38dB**
隔音性



SRI LANKA 112

BROKEN BRIDGE CASEMENT WINDOW

斯里兰卡 112 断桥平开窗



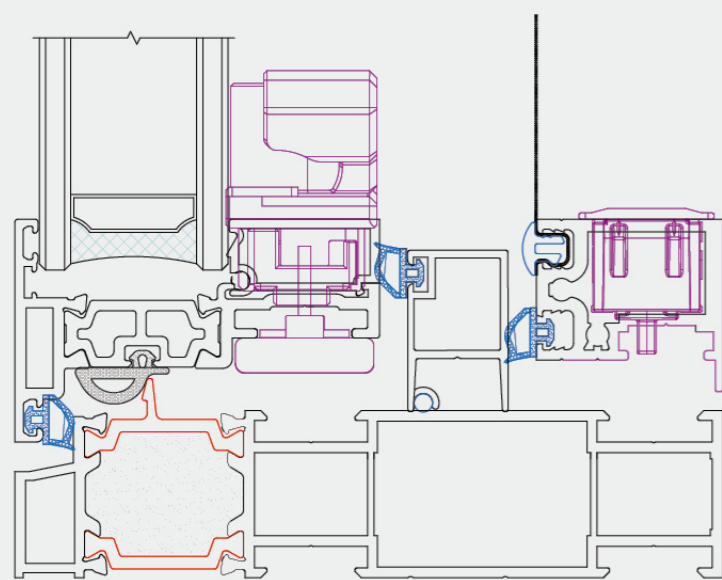
- 8级**
抗风压
- 4级**
水密性
- 7级**
气密性
- 7级**
保温性
- 38dB**
隔音性



112 EXTREME VIEW

SYSTEM WINDOW

112 极景系统窗



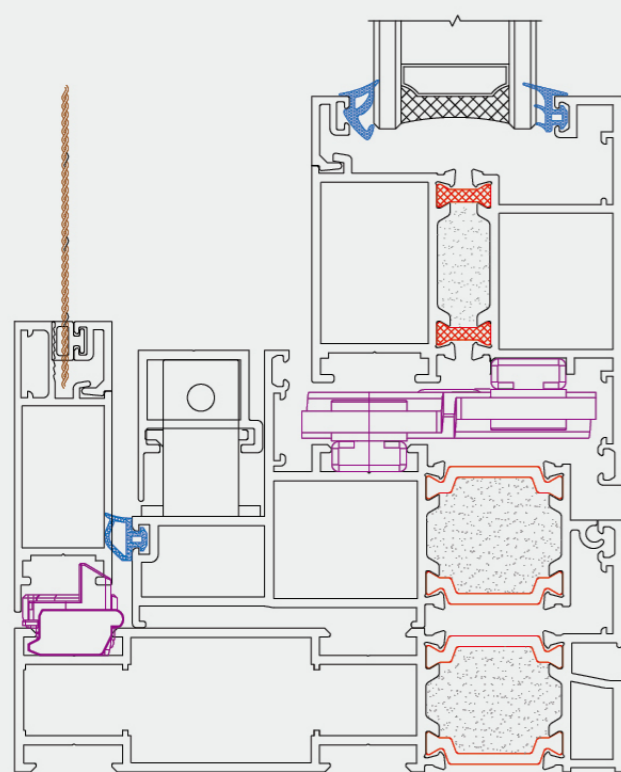
- 8级**
抗风压
- 4级**
水密性
- 7级**
气密性
- 7级**
保温性
- 38dB**
隔音性



113 BROKEN BRIDGE

SLIDING WINDOW/DOOR

113 断桥平推窗 / 门



- 8级**
抗风压
- 4级**
水密性
- 7级**
气密性
- 7级**
保温性
- 38dB**
隔音性



圣彼得堡 120 系统断桥窗
Broken bridge window of St. Petersburg 120 system



ST PETERSBURG 120

BROKEN BRIDGE WINDOW

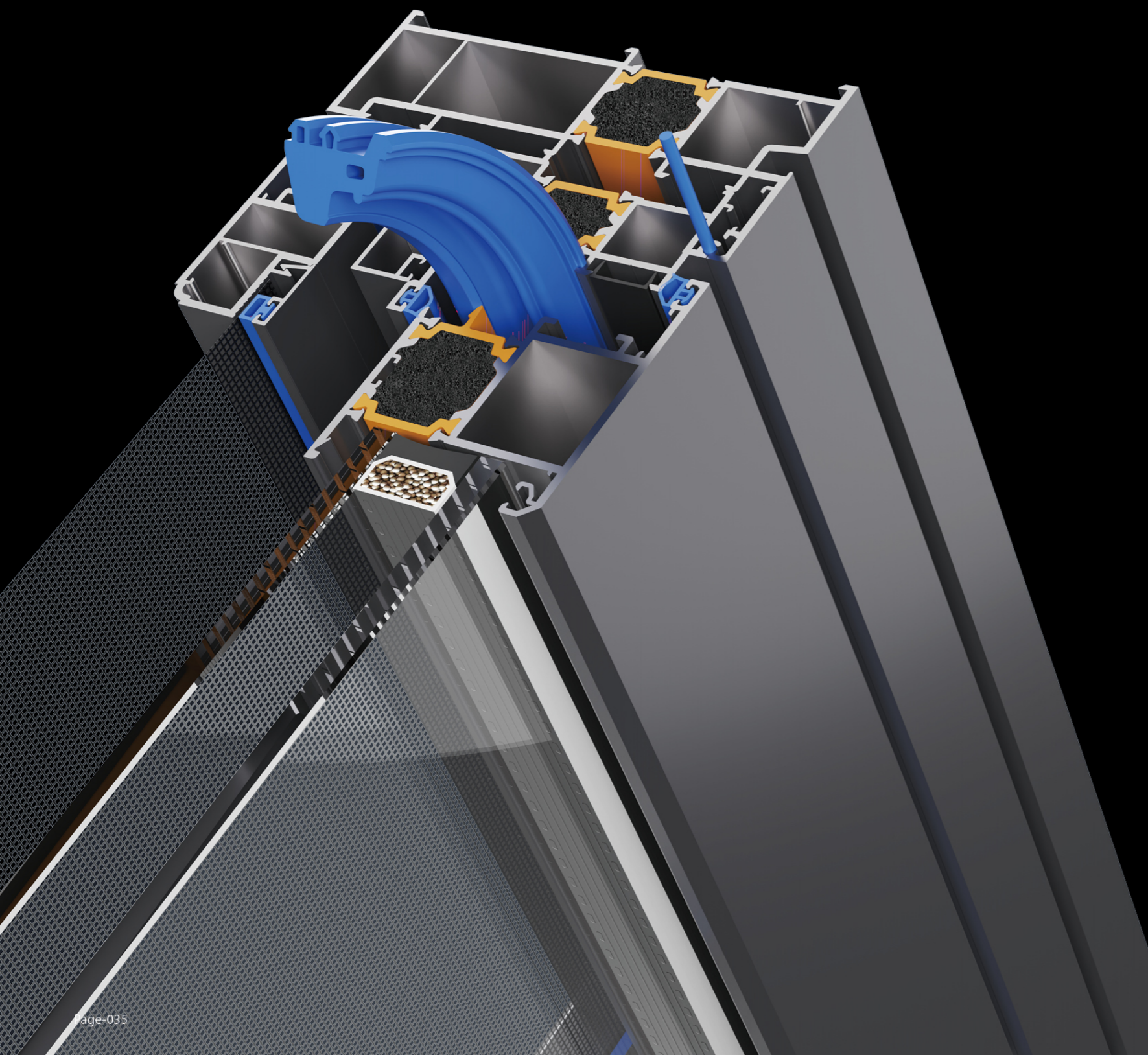
圣彼得堡 120 系统断桥窗

连续折弯发泡胶条

Continuous bending foam strip

发泡胶条采用一体式连续折弯技术，转角处没有断口，增强门窗气密、水密性能。主框和副框拼接处设置密封圈，密封性能更强。

The foam sealing strip employs a one-piece continuous bending technology, ensuring no breaks at corners to enhance the airtight and watertight performance of doors and windows. A sealing ring is installed at the joint between the main frame and the sub-frame to enhance sealing performance.



多种开启方式可选

Multiple opening modes are optional

开启方式可以做外开、内开、双内开。
玻璃可做三玻两腔，隔音隔热性能更佳。

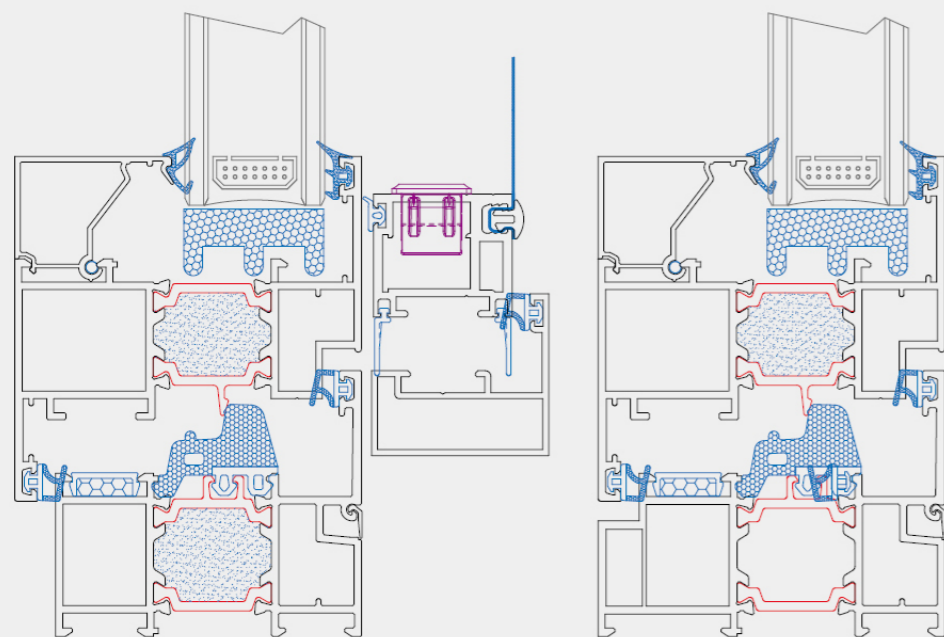
The opening mode can be external opening, internal opening and double internal opening.
Glass can be used as three glasses and two cavities, with better sound and heat insulation performance.



美国希美克执手

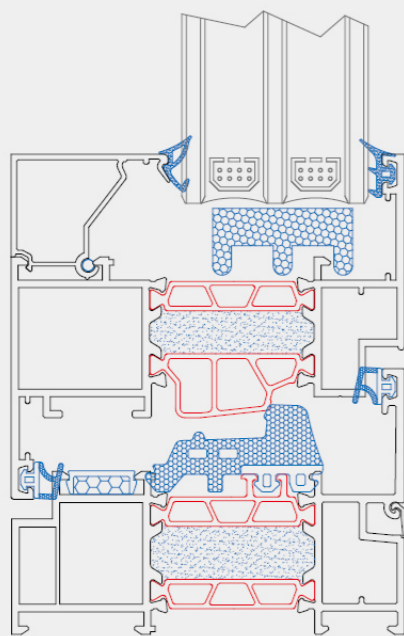
65/75/85 SYSTEM WINDOW

65/75/85 系统断桥窗



65 系统断桥窗

75 系统断桥窗



85 系统断桥窗

- 8级**
抗风压
- 4级**
水密性
- 7级**
气密性
- 7级**
保温性
- 38dB**
隔音性

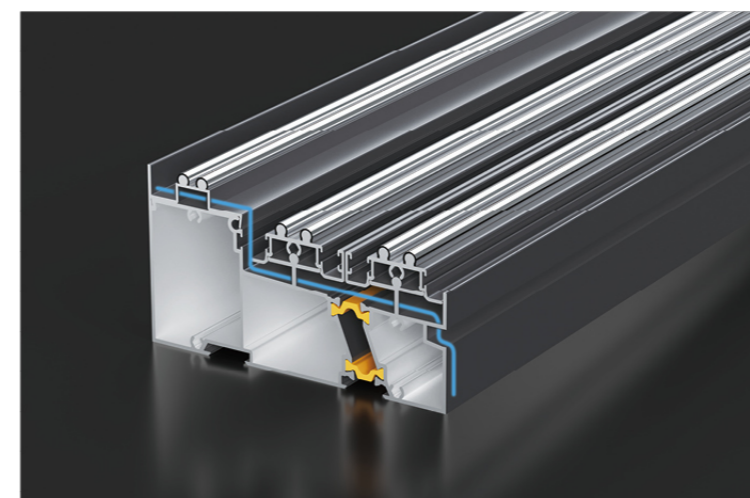




KART 118 2.0

BROKEN BRIDGE SLIDING WINDOW

卡尔特 118 2.0 六轨断桥推拉窗（嵌入式）



采用高低落差引导排水，防止雨水进入室内，排水更顺畅。
The high and low drop is used to guide the drainage to prevent rainwater from entering the room and make the drainage more smooth.

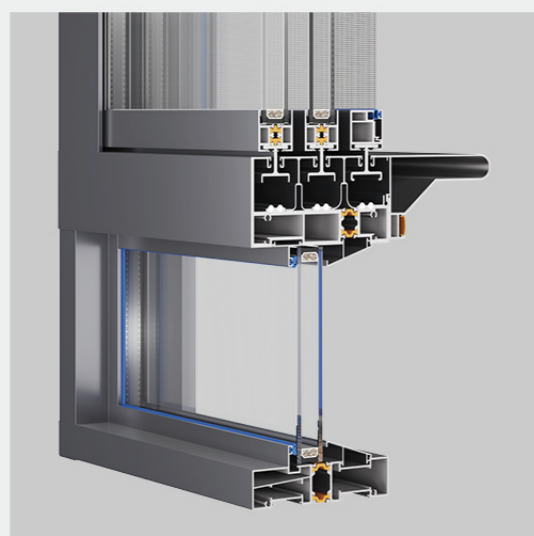
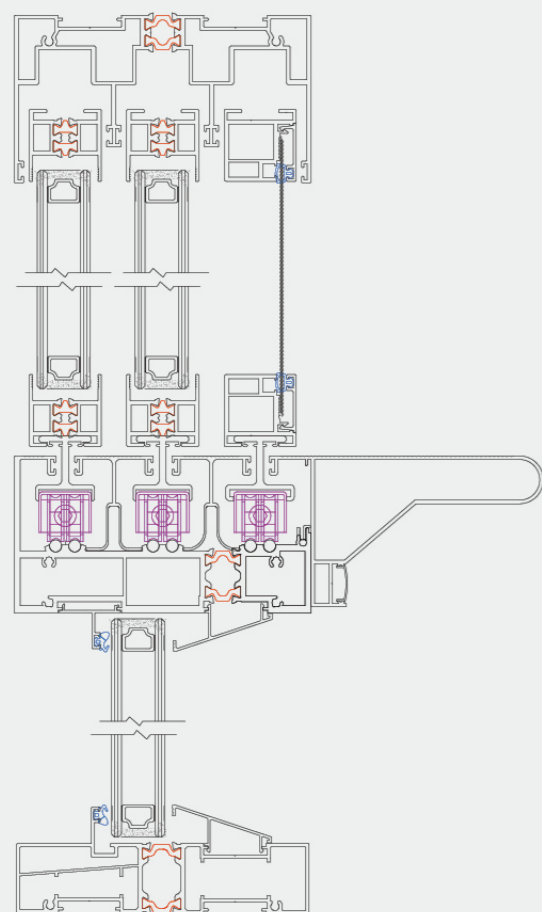


自动一字锁

128 SUSPENDED SIX TRACK SLIDING WINDOW

SLIDING WINDOW

128 悬浮六轨推拉窗



- 8级**
抗风压
- 4级**
水密性
- 7级**
气密性
- 7级**
保温性
- 38dB**
隔音性



AMERICAN-STYLE

TILT WINDOW

—
美式提拉窗



FOLDING

WINDOW

—
折叠窗



68 FOLDING

DOOR

—
68 折叠门



PT

DOOR

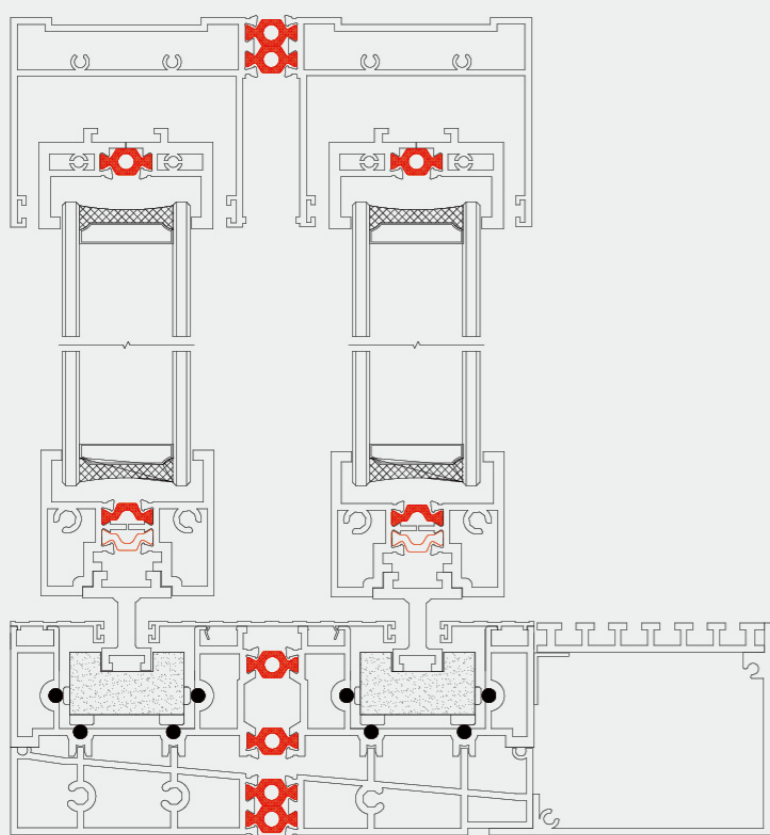
—
PT 门



150 PANORAMIC

HEAVY-DUTY SLIDING DOOR

150 全景重型推拉门



- 8级**
抗风压
- 4级**
水密性
- 7级**
气密性
- 7级**
保温性
- 38dB**
隔音性





168

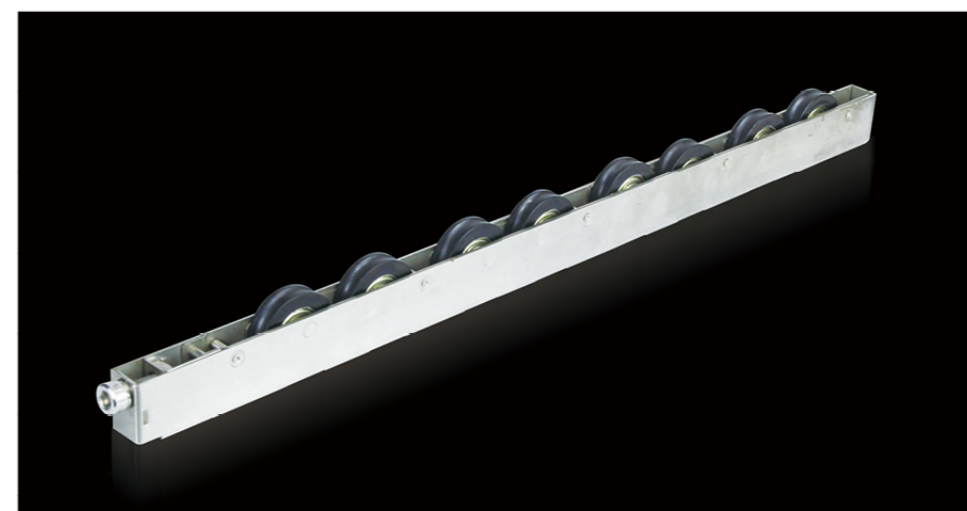
HEAVY-DUTY LIFTING SLIDING DOOR

168 重型提升推拉门

- 8级**
抗风压
- 4级**
水密性
- 7级**
气密性
- 7级**
保温性
- 38dB**
隔音性



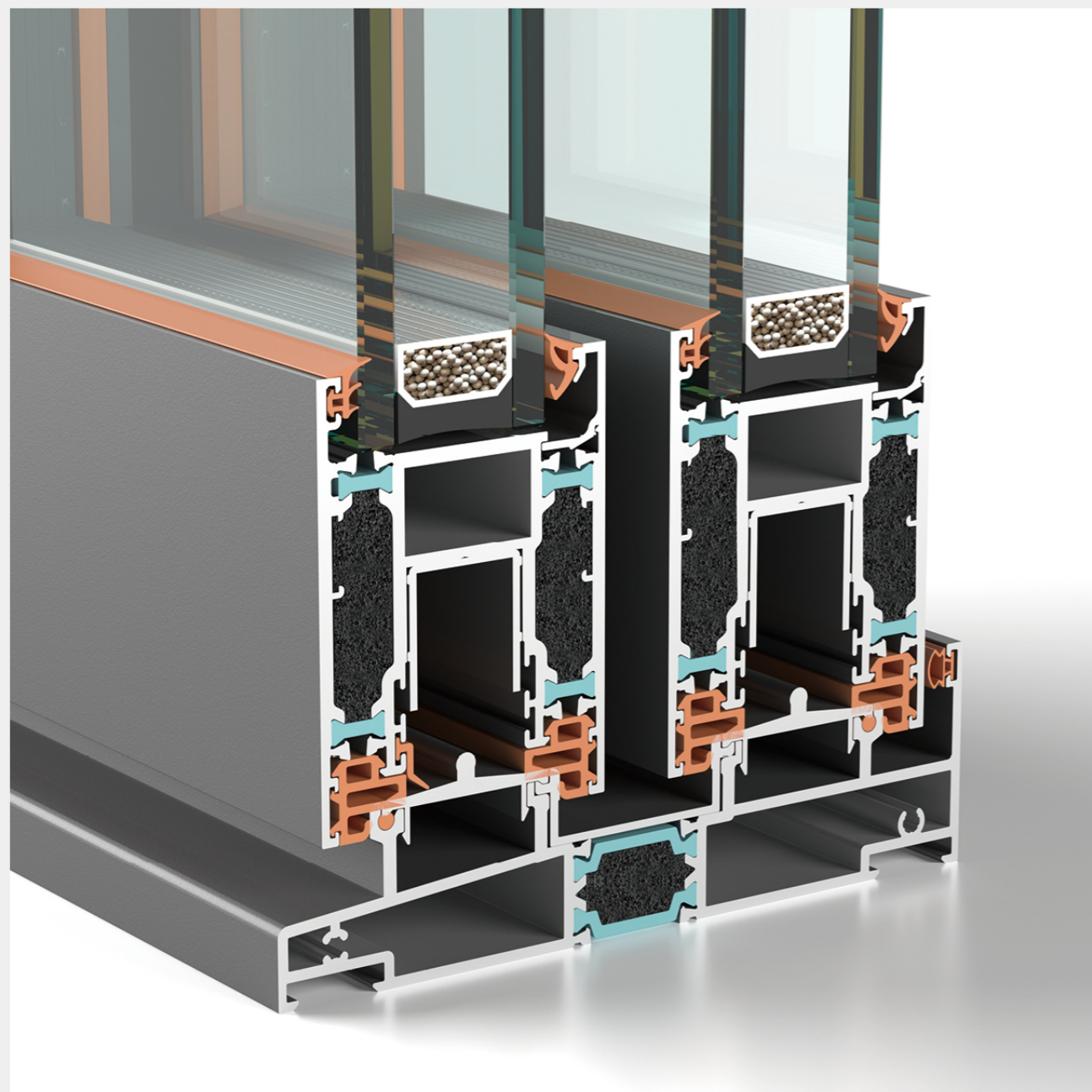
诺托提升执手



下滑轮



防水高轨



140 NARROW EDGE

HEAVY-DUTY LIFTING SLIDING DOOR

140 窄边重型提升推拉门

门扇双断桥设计

Double-break bridge design for door panels

采用内外两层铝合金型材，中间以高性能 PA66 尼龙隔热条连接，形成两道断桥结构，物理阻断热量传导路径，隔热性能更出色。

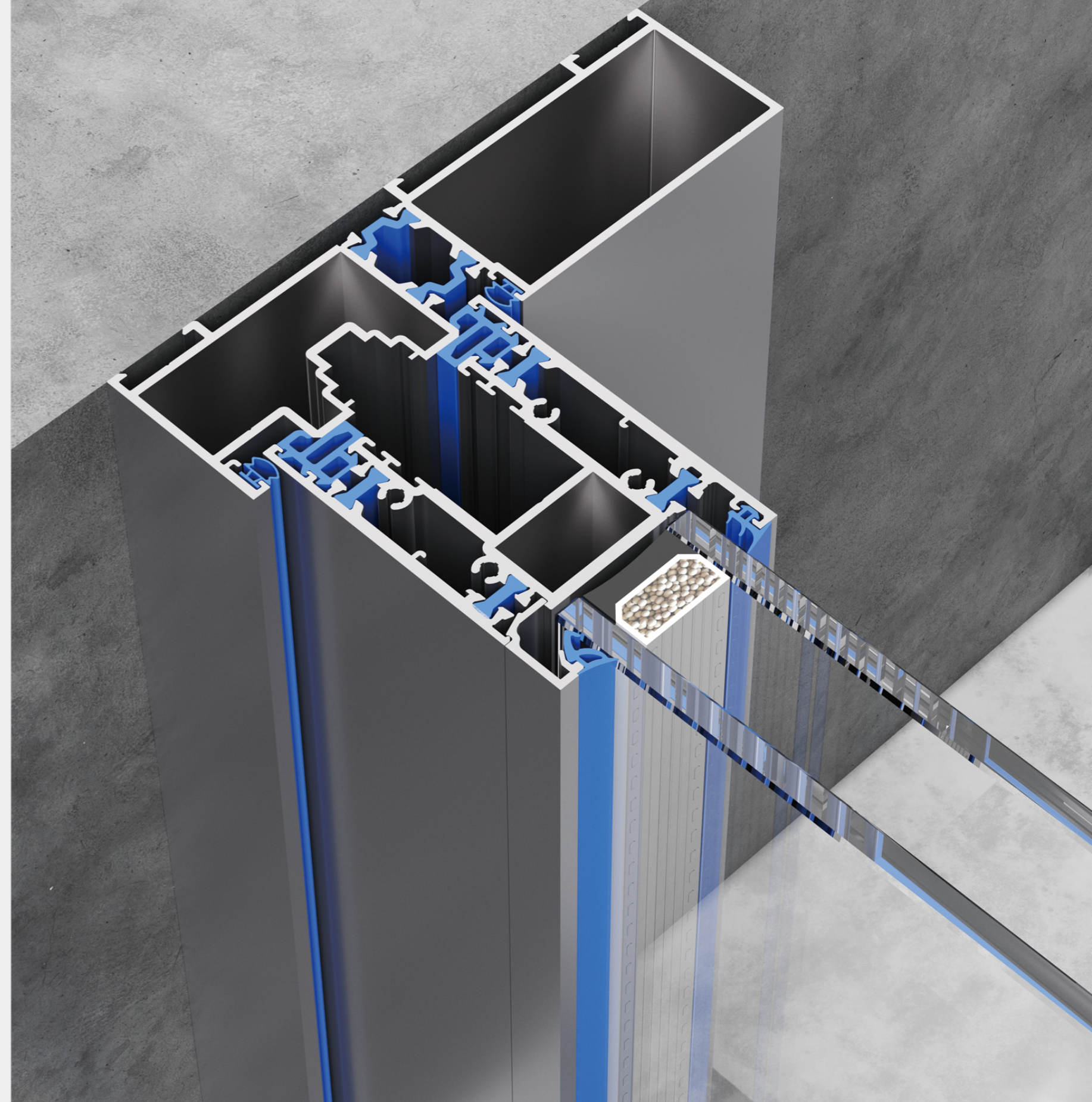
The profile features double-layer aluminum alloy with a high-performance PA66 nylon thermal break strip in between, forming a dual-break bridge structure that physically interrupts heat transfer paths, delivering superior thermal insulation performance.

嵌入式边框设计

Embedded Border Design

采用嵌入式边框设计配备光企边框多道密封，提高气密性，防撞防盗，安全性能更好。无惧风吹摇晃、水流倒灌，坚固稳定。

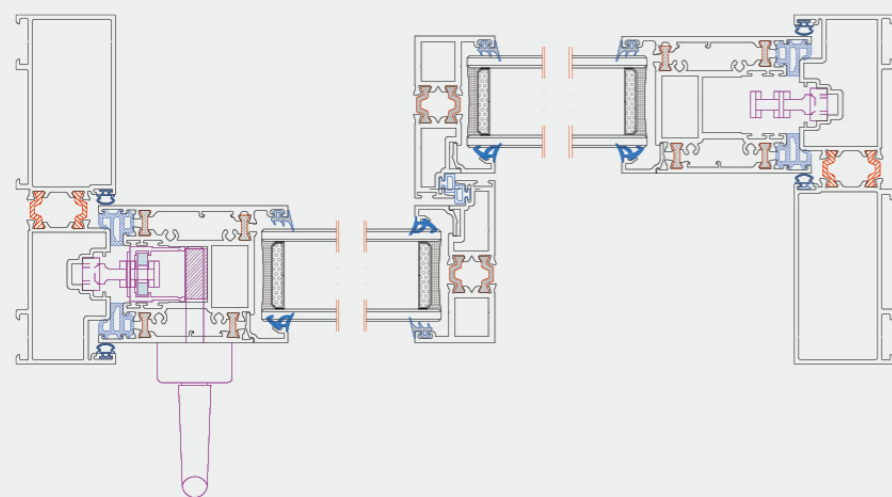
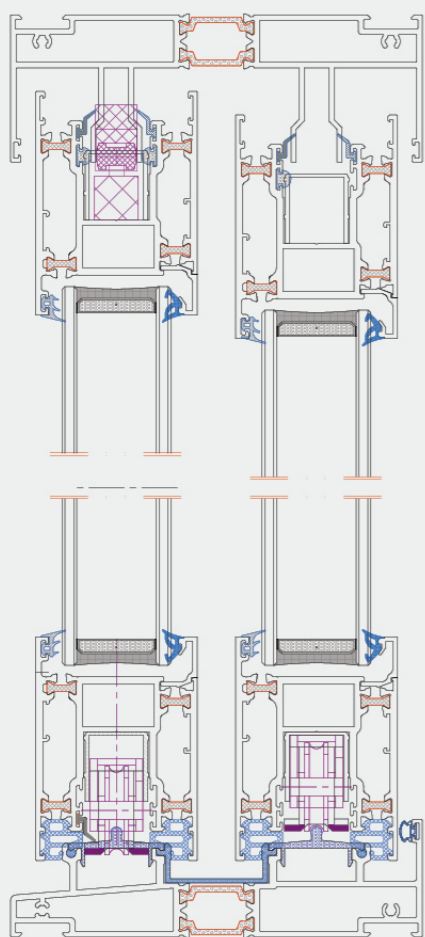
The design features an embedded border with multiple seals along the optical edge, enhancing airtightness, anti-pry and anti-theft capabilities, and superior safety performance. It resists wind-induced shaking and water backflow, ensuring robust stability.



140 NARROW EDGE

HEAVY-DUTY LIFTING
SLIDING DOOR

140 窄边重型提升推拉门



- 8级**
抗风压
- 4级**
水密性
- 7级**
气密性
- 7级**
保温性
- 38dB**
隔音性

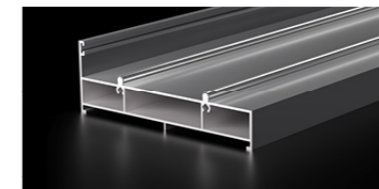




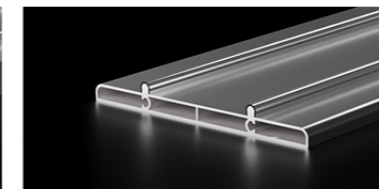
45 NARROW EDGE

SLIDING DOOR

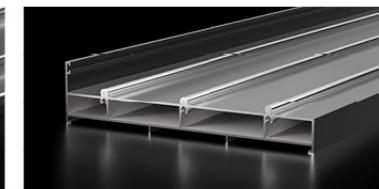
45 窄边推拉门



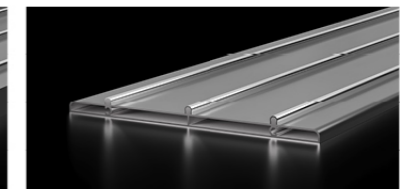
二轨挡水轨



二轨平轨



三轨高轨



三轨平轨



45x07 极窄扇



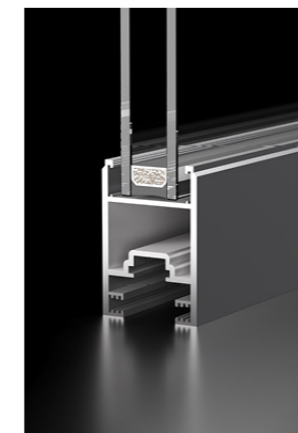
45x16 窄边扇



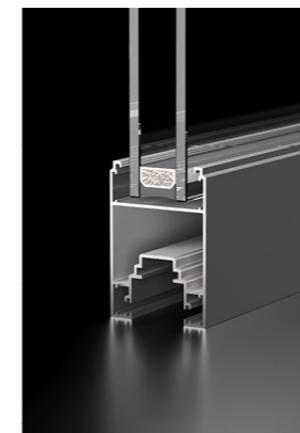
30 窄边扇 (壁厚 2.0)



45 中窄扇 (壁厚 2.0)



65 重型扇 (壁厚 3.0)



65 扇 (壁厚 1.6)



88 扇 (壁厚 1.6)



88 平面扇 (壁厚 1.8)



125 扇 (壁厚 1.6)



125 平面扇 (壁厚 2.0)

16 EXTREMELY NARROW

SLIDING DOOR

—
16 极窄推拉门



52

MEDIUM NARROW SWING DOOR

—
52 中窄平开门



45X16

EXTREMELY NARROW SWING DOOR

—
45X16 极窄平开门



40X07 EXTREMELY NARROW

SWING DOOR

—
40X07 极窄平开门



FLIP LOUVERED

PAVILION

—
翻转百叶凉亭



100

QUICK INSTALLATION OF SUNROOM

100 快装阳光房



ELECTRIC OPENING SUNROOM

电动开启阳光房

一杯浓茶，一张躺椅，一片阳光，一个下午。这是多少忙碌都市人向往的闲逸生活。一个有品位的人，会让居室的搭配在冷与暖间随心切换，而一个阳光房的点缀则能实现这一目标，营造悠然自得的情绪。

A cup of strong tea, a deck chair, a piece of sunshine, an afternoon. This is the leisure life that many busy city people yearn for. While the embellishment of a sunny room can achieve this goal and create a carefree mood. The collocation of plants shows strong cultural sustenance.



ANTIQUE

WINDOW

—
仿古窗



ANTIQUE

DOOR

—
仿古门

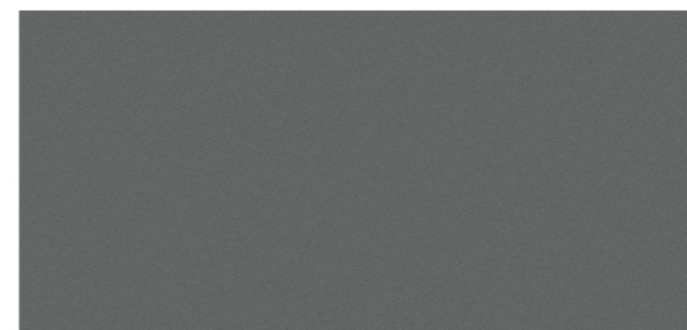


OPTIONAL

COLORS

可选颜色

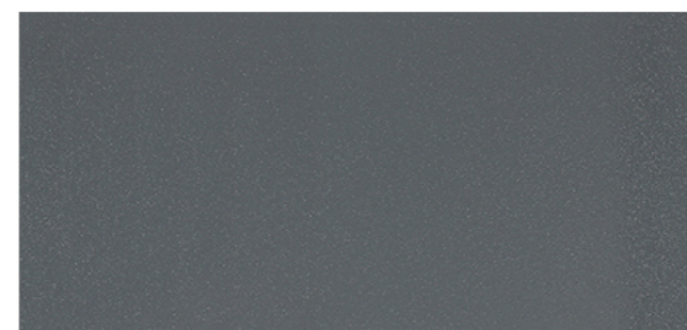
常规颜色
Regular colors



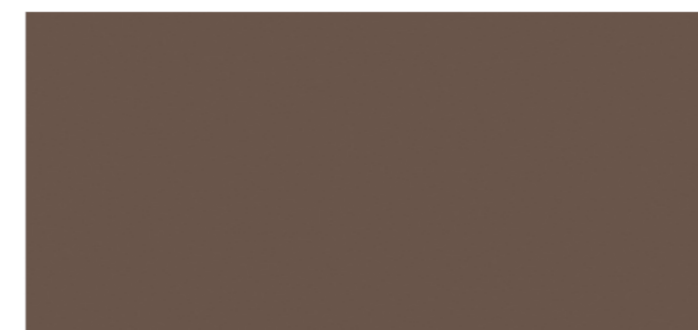
金属灰
Metallic Gray



金属咖啡
Metal Coffee



砂灰
Sandy gray



8004 咖啡色
8004 coffee color

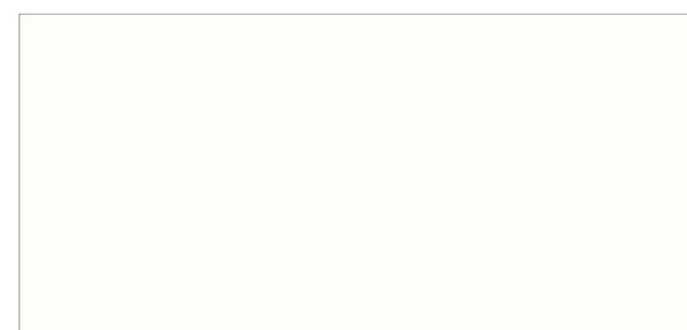
定制颜色
Custom color



珐琅黑
Enamel black



砂金黑
Sand gold black



珐琅白
Enamel White