

JZB series semi-hermetic condensing units

JZB 系列半封闭压缩冷凝机组

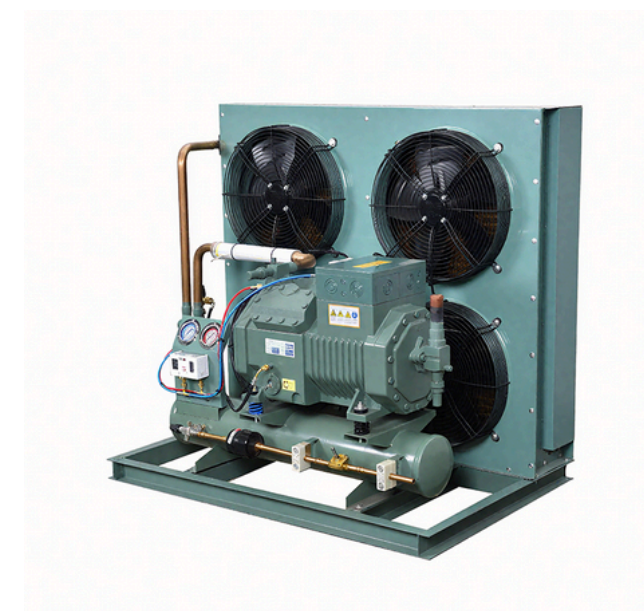
JZB series semi-hermetic condensing units

JZB 系列半封闭压缩冷凝机组

1 产品描述 Product Description

2 型号标识 Nomenclature

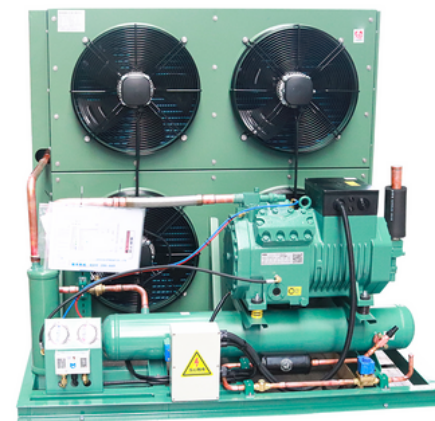
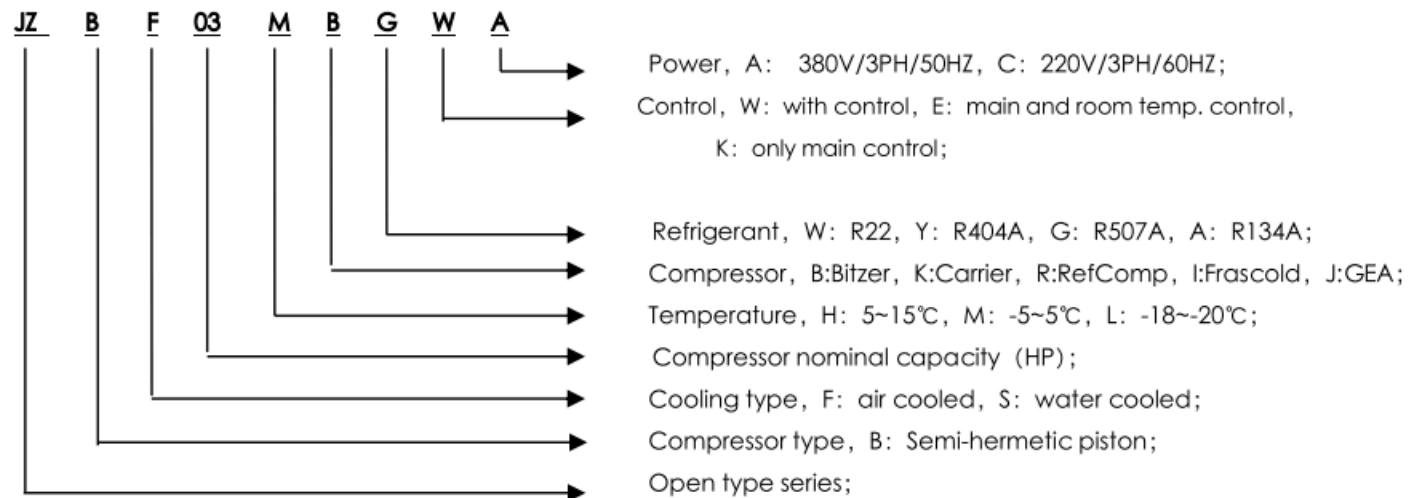
3 技术参数 technical data



产品描述 PRODUCT DESCRIPTION

- With Bitzer Ecoline series semi-hermetic compressor, good quality, work stable.
- With copper tube-Alu fin air cooled condenser of high efficient shelltube water cooled condenser, high effective heatexchange, long service life.
- Air cooled condensing units with low noise and high efficient external rotor fan motor, Low noise, high effective and good looking.
- With high quality China made or imported components, full configuration, condensing units working stable.
- Condensing unit with water-proof cable connection box ,all the controlling component are connected in the connectionbox,easy for user's connection.
- A complete product range with wide temp, can be used for keeping fresh, cold storage, ice making, low temperaturecooling water and so on.

型号标识 NOMENCLATURE



技术参数 TECHNICAL DATA

1.Air cooled Medium Temp.Refrigerant R507A:

Model	JZBF02 MBGWA	JZBF03 MBGWA	JZBF03 MBGWA	JZBF03 MBGWA	JZBF04 MBGWA	JZBF05 MBGWA		
Compressor Model	2GES-2Y	2FES-3Y	2EES-3Y	2DES-3Y	2CES-4Y	4FES-5Y		
Temperature(°C)	-10°C~5°C							
Power supply	380V/3PH/50 HZ							
Condenser	Fan QTY	1	1	2	2	2		
	Fan power(V)	380	380	380	380	380		
	Fan Input(w)	180×1	180×1	140×2	140×2	180×2	180×2	
Comp capacity and input	Te -5°C	capacity(w)	4140	5090	6620	7680	9770	10600
		Input (kw)	1.94	2.39	2.74	3.21	4.07	4.38
	Te -10°C	capacity(w)	3310	4070	5290	6150	7860	8470
		Input (kw)	1.81	2.22	2.53	2.96	3.77	4.09
	Te -15°C	capacity(w)	2610	3200	4170	4860	6240	6700
		Input (kw)	1.66	2.03	2.31	2.69	3.44	3.76
pipe	suction (mm)	φ22	φ22	φ22	φ28	φ28	φ28	
	Liquid (mm)	φ10	φ10	φ12	φ12	φ12	φ12	
Overall Size(L*W*H)(mm)	840*730*570	840*730*570	1100*750*490	1100*750*570	1100*750*705	1330*760*660		
Installation size(A×B)mm	800×340	800×340	1060×480	1060×480	1060×480	1290×480		

Model	JZBF06 MBGWA	JZBF07 MBGWA	JZBF09 MBGWA	JZBF12 MBGWA	JZBF15 MBGWA	JZBF20 MBGWA
Compressor Model	4EES-6Y	4DES-7Y	4CES-9Y	4TES-12Y	4PES-15Y	4NES-20Y
Temperature(°C)	-10°C~5°C					
Power supply	380V/3PH/50 HZ					
Condenser	Fan QTY	2	2	2	2	2
	Fan power(V)	380	380	380	380	380
	Fan Input(w)	180×2	250×2	250×2	450×2	450×2

Comp capacity and input	Te -5°C	capacity(w)	13320	15630	19540	24700	28100	33600
		Input (kw)	5.54	6.42	8.13	9.86	11.17	13.32
	Te -10°C	capacity(w)	10620	12490	15570	19530	22100	26700
		Input (kw)	5.14	5.97	7.51	9.02	10.17	12.2
	Te -15°C	capacity(w)	8370	9860	12250	15.26	17140	20800
		Input (kw)	4.7	5.47	6.82	8.13	9.09	11
pipe	suction (mm)		φ28	φ28	φ28	φ35	φ42	42
	Liquid (mm)		φ12	φ16	φ16	φ16	φ22	φ22
Overall Size(L*W*H)(mm)			1330*760*743	1330*760*830	1700*900*810	1700*900*915	1700*900*1165	1700*900*1206
Installation size(A × B)mm			1290 × 480	1290 × 480	1660 × 480	1660 × 480	1660 × 480	1660 × 480

Model		JZBF25MBGWA	JZBF30MBGWA	JZBF35MBGWA	JZBF40MBGWA	JZBF50MBGWA	
Compressor Model		4HE-25Y	4GE-30Y	4FE-35Y	6GE-40Y	6FE-50Y	
Temperature(°C)		-10°C~5°C					
Power supply		380V/3PH/50 HZ					
Condenser	Fan QTY	2	2	3	3	3	
	Fan power(V)	380	380	380	380	380	
	Fan Input(w)	780 × 2	780 × 2	800 × 3	800 × 3	800 × 3	
Comp capacity and input	Te -5°C	capacity(w)	44300	50900	60800	74000	90100
		Input (kw)	17.59	20.3	25.3	30.3	37.5
	Te -10°C	capacity(w)	35500	40800	49100	59400	72600
		Input (kw)	16.19	18.71	23.3	28	34.6
	Te -15°C	capacity(w)	28000	32300	39200	47200	57700
		Input (kw)	14.7	16.99	21.2	25.6	31.5
pipe	suction (mm)		φ54	φ54	φ54	φ54	φ54
	Liquid (mm)		φ22	φ22	φ22	φ28	φ28
Overall Size(L*W*H)(mm)			1150*570*860	1150*570*860	1050*600*910	1050*600*910	1600*610*880
Installation size(A × B)mm			800 × 525	800 × 525	800 × 555	800 × 555	1000 × 600

2.Air cooled Low Temp.Refrigerant R507A:

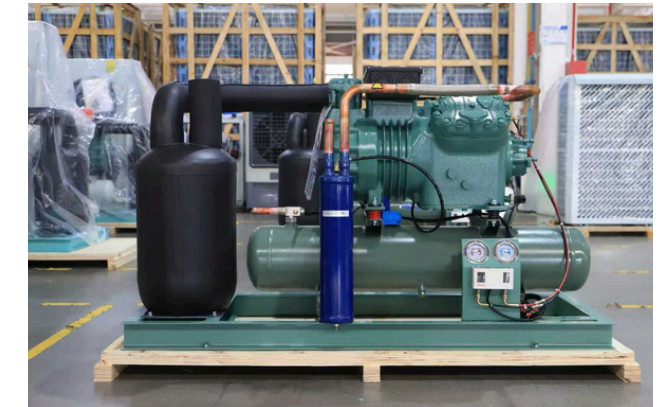
Model		JZBF02LB GWA	JZBF02LB GWA	JZBF02LB GWA	JZBF03LB GWA	JZBF03LB GWA	JZBF04LB GWA	
compressor Model		2FES-2Y	2EES-2Y	2DES-2Y	2CES-3Y	4FES-3Y	4EES-4Y	
Temperature(°C)		-15°C~-30 °C						
power supply		380V/3PH/50 HZ						
Condenser	Fan QTY	1	1	1	2	2	2	
	Fan power(V)	380	380	380	380	380	380	
	Fan Input(w)	140	180	180	140 × 2	140 × 2	180 × 2	
Comp capacity and input	Te -25°C	capacity(w)	1870	2430	2860	3720	3990	5070
		Input (kw)	1.64	1.79	2.14	2.76	3.06	3.84
	Te -30°C	capacity(w)	1370	1780	2110	2770	3000	3800
		Input (kw)	1.42	1.53	1.84	2.39	2.66	3.32
	Te -35°C	capacity(w)	960	1250	1490	1990	2190	2770
		Input (kw)	1.19	1.26	1.53	2.03	2.260	2.8
Te -40°C	capacity(w)	620	810	990	1360	1560	1960	
	Input (kw)	0.97	1.01	1.23	1.67	1.88	2.3	
pipe	suction (mm)		φ16	φ22	φ22	φ22	φ22	φ28
	Liquid (mm)		φ10	φ10	φ12	φ12	φ12	φ12
Dimension(L*W*H)(mm)		840*730*486	840*730*570	840*730*570	1100*750*490	1100*750*570	1100*750*617	
Installation size(A × B)mm		800 × 340	800 × 340	800 × 340	1060 × 480	1060 × 480	1060 × 480	

Model		JZBF05LBG WA	JZBF06LBG WA	JZBF09LBG WA	JZBF12LBGW A	JZBF14LBGW A
compressor Model		4DES-5Y	4CES-6Y	4TES-9Y	4PES-12Y	4NES-14Y
Temperature(°C)		-15°C~-30°C				
power supply		380V/3PH/50 HZ				
Condenser	Fan QTY	2	2	2	2	2
	Fan power(V)	380	380	380	380	380
	Fan Input(w)	180 × 2	180 × 2	250 × 2	250 × 2	450 × 2

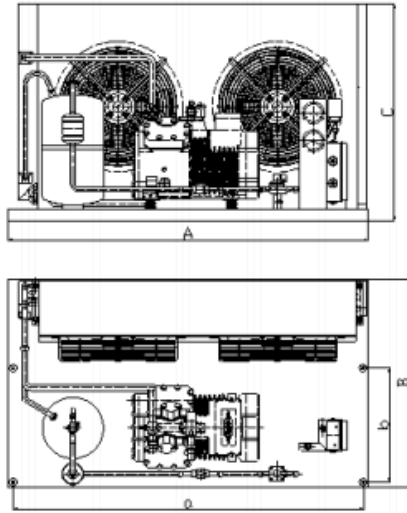
Comp capacity and input	Te -25°C	capacity(w)	5870	7230	8860	9780	12030
		Input (kw)	4.41	5.36	6.35	6.88	8.58
	Te -30°C	capacity(w)	4400	5380	6510	7060	8820
		Input (kw)	3.82	4.61	5.38	5.74	7.24
	Te -35°C	capacity(w)	3210	3890	4620	4900	6260
		Input (kw)	3.24	3.89	4.46	4.64	5.94
	Te -40°C	capacity(w)	2270	2710	3140	3220	4240
		Input (kw)	2.68	3.2	3.61	3.62	4.72
pipe	suction (mm)	φ28	φ28	φ35	φ35	φ35	
	Liquid (mm)	φ12	φ12	φ16	φ16	φ22	
Dimension(L*W*H)(mm)		1100*750*705	1330*760*660	1330*760*830	1700*900*810	1700*900*915	
Installation size(A × B)mm		1060 × 480	1290 × 480	1290 × 480	1660 × 480	1660 × 480	

Model	JZBF18LBGWA	JZBF23LBGWA	JZBF28LBGWA	JZBF34LBGWA	JZBF44LBGWA
compressor Model	4HE-18Y	4GE-23Y	4FE-28Y	6GE-34Y	6FE-44Y
Temperature(°C)	-15°C~-30 °C				
power supply	380V/3PH/50HZ				
Condenser	Fan QTY	2	2	2	2
	Fan power(V)	380	380	380	380
	Fan Input(w)	450 × 2	600 × 2	780 × 2	780 × 2

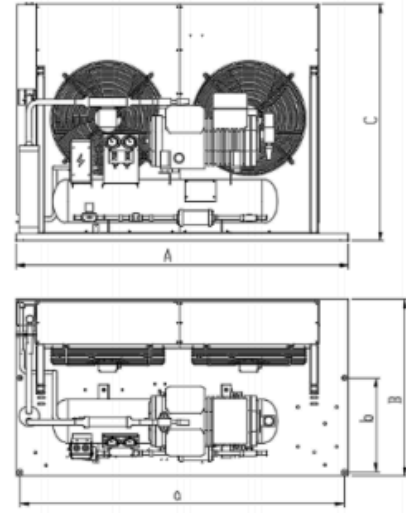
Comp capacity and input	Te -25°C	capacity(w)	17120	20200	24100	30400	36200
		Input (kw)	12	14.27	17.13	21.8	26.2
	Te -30°C	capacity(w)	12810	15240	18250	23200	27400
		Input (kw)	10.35	12.33	14.78	18.95	22.7
	Te -35°C	capacity(w)	9300	11210	13400	17190	20100
		Input (kw)	8.75	10.46	12.46	16.19	19.35
	Te -40°C	capacity(w)	6480	7980	9430	12340	14150
		Input (kw)	7.23	8.71	10.22	13.56	16.07
pipe	suction (mm)	φ42	φ54	φ54	φ54	φ54	
	Liquid (mm)	φ22	φ22	φ22	φ22	φ28	
Dimension(L*W*H)(mm)		1280*800*1460	1350*850*1410	1350*850*1410	1150*570*1000	1050*600*1050	
Installation size(A × B)mm		1660 × 480	1660 × 480	1100 × 855	800 × 525	800 × 555	



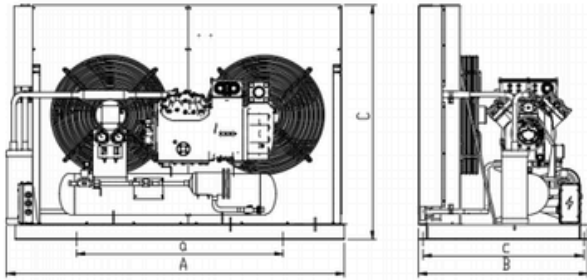
JZBF02M...JZBF07M
JZBF02L...JZBF06L



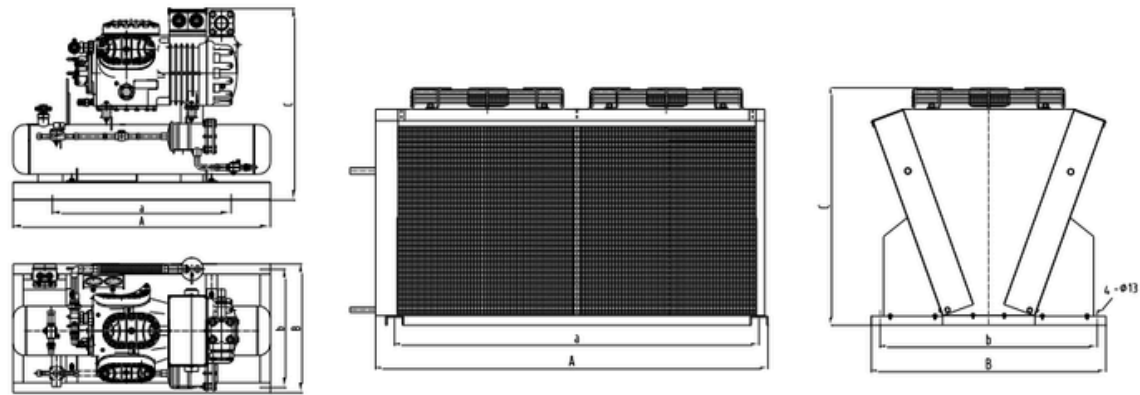
JZBF09M...JZBF20M
JZBF09L...JZBF23L



JZBF28L



JZBF25M...JZBF50M、JZBF34L...JZBF44L



Condensing Unit

Condenser