



**LAMARTY®**

**veneer embossed  
texture board**



PRODUCT SUBSTRATE

① MDF

Naturally corrosion-resistant, insect-resistant, and mold-resistant, with minimal odor, high flatness, and stability. Easy to process, it offers superior moisture resistance compared to similar pine and poplar products. This versatile panel is ideal for customized surface treatment technology in the home furnishing industry.

- Density: 720 kg/m³

▪ Grade: Veneer Grade
- Moisture Content: 7.8%

▪ Environmental Standard: carb p2



② Five-Layer Solid Wood Balance Board

The five-layer solid wood balance board offers excellent structural stability, making it resistant to deformation and cracking. It features a five-layer cross-grain structure and undergoes high-temperature and high-pressure treatment, optimizing internal stress distribution to enhance bending strength and durability. Easy to process, it meets various customization needs.

- Density: 570 kg/m³

▪ Grade: Veneer Grade
- Moisture Content: 6-8%

▪ Environmental Standard: carb p2



③ Eucalyptus Plywood

Eucalyptus plywood boasts exceptional strength and stability, minimizing the risk of cracking and deformation. With a dense wood structure and high-temperature, high-pressure treatment, it effectively balances internal stress for enhanced durability. Additionally, eucalyptus has a moderate density, providing excellent moisture resistance and nail-holding capacity, making it a superior choice for home and decorative applications.

- Density: 530 kg/m³

▪ Grade: Veneer Grade
- Moisture Content: 6-8%

▪ Environmental Standard: carb p2



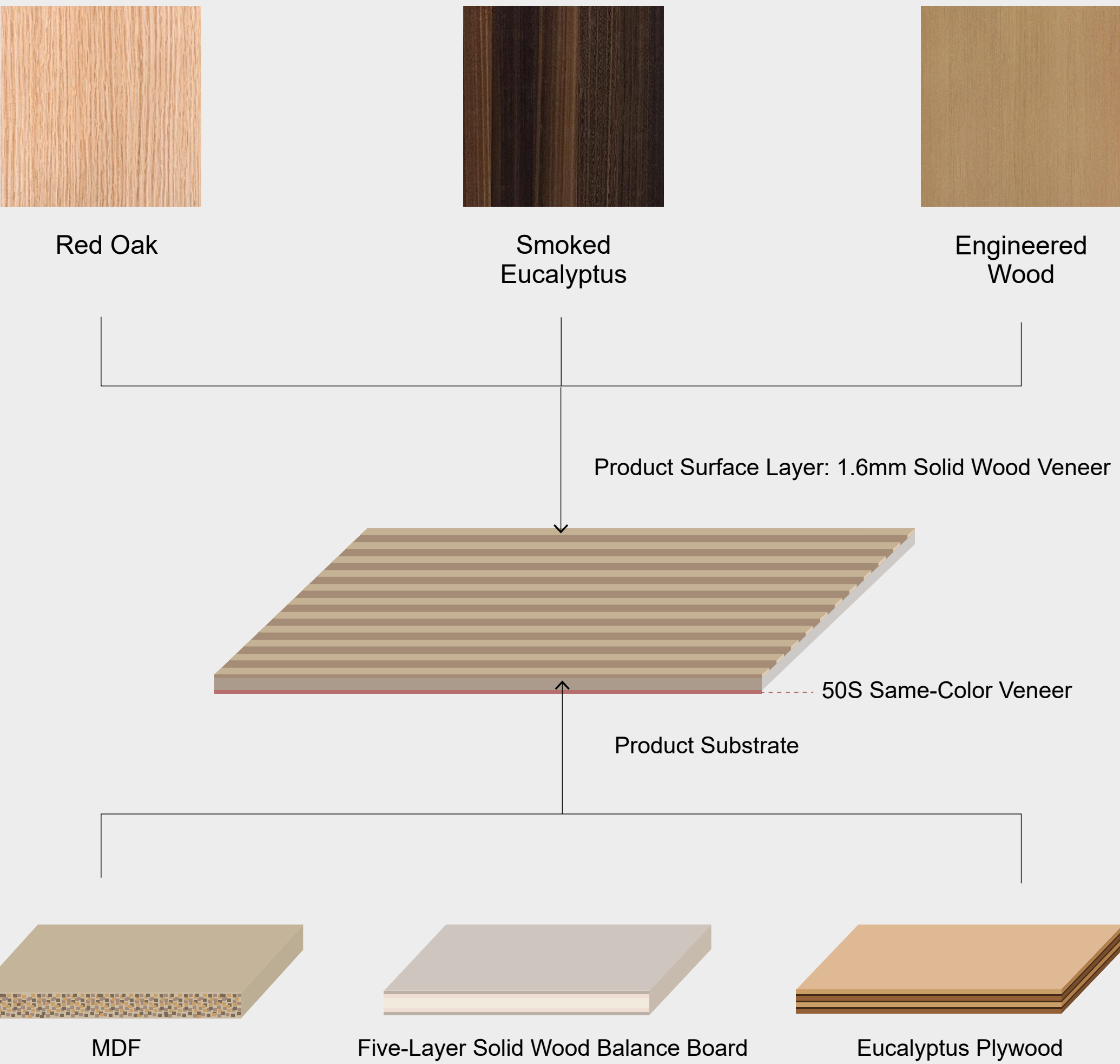
Veneer Embossed Texture Board

The veneer embossed texture panel consists of a three-layer structure:

**Top Layer:** 1.6mm solid wood veneer, available in five high-grade natural wood veneer options: Red Oak, Smoked Eucalyptus and Engineered Wood.

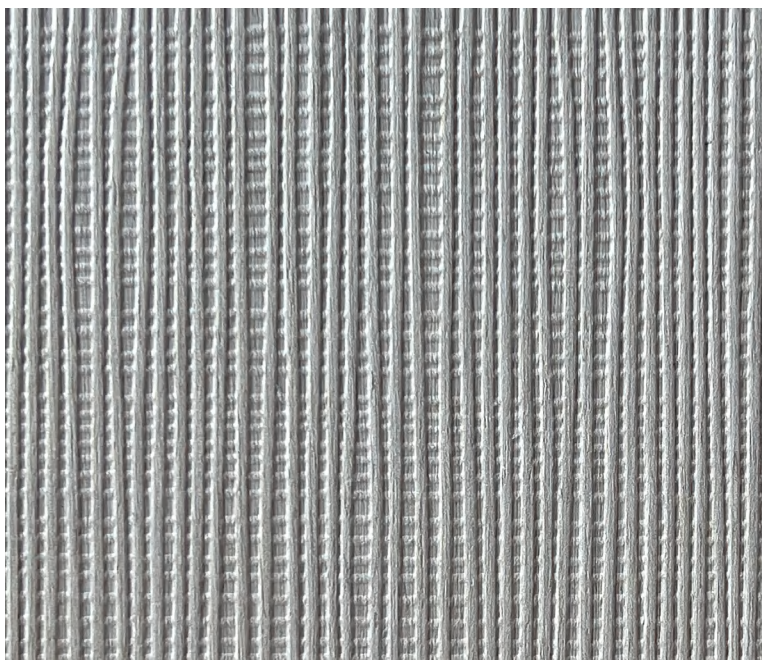
**Core Layer:** A choice of substrates, including MDF, five-layer solid wood, and eucalyptus plywood, catering to different application needs.

**Bottom Layer:** 50S same-color veneer.





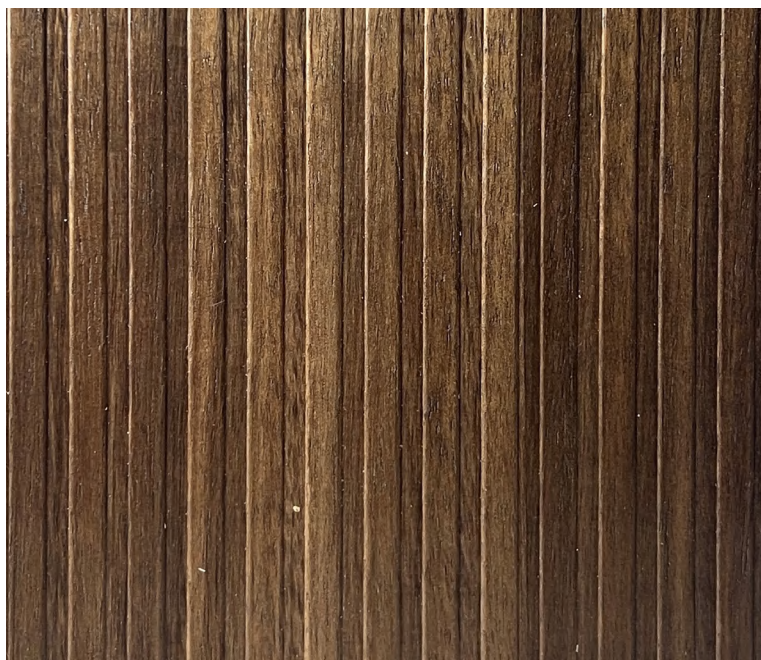
TEXTURE &  
RECOMMENDED COLOR SCHEME



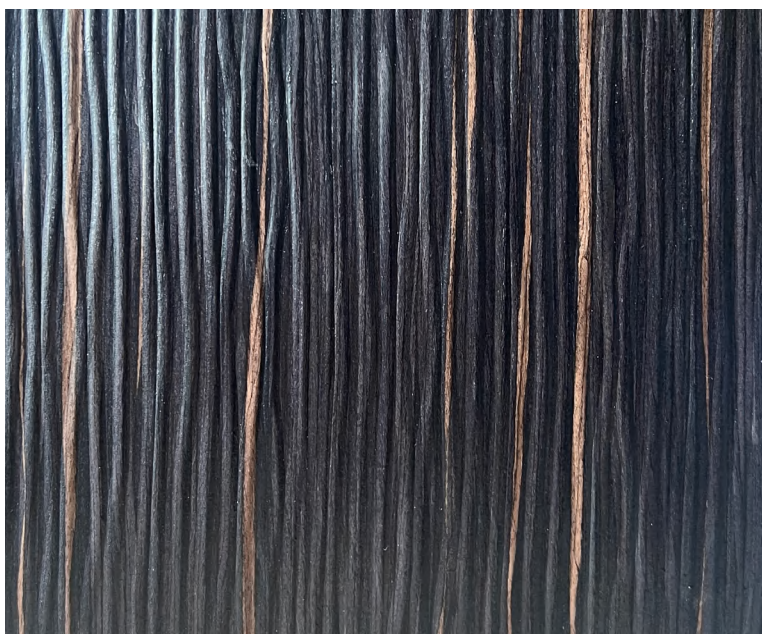
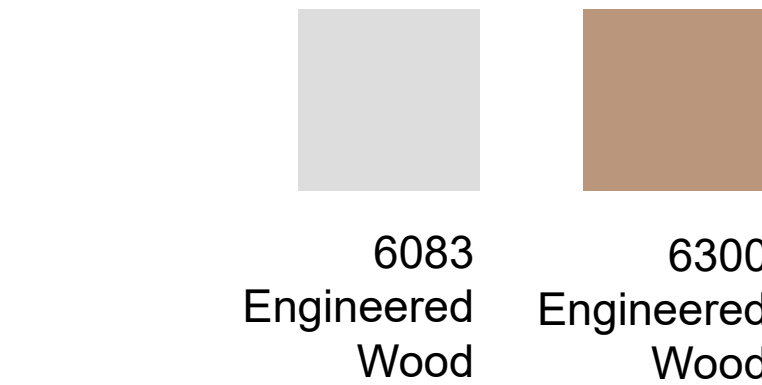
Fabric Texture



Checkered



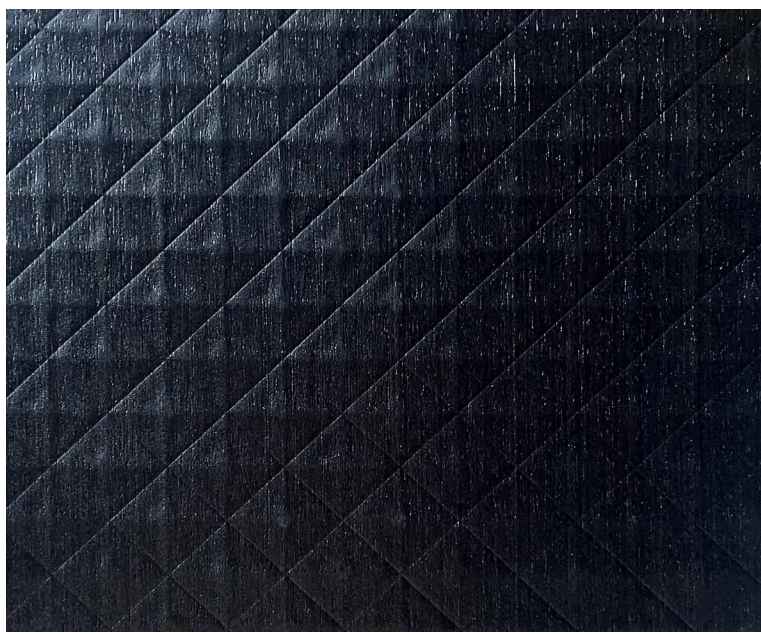
Stripe



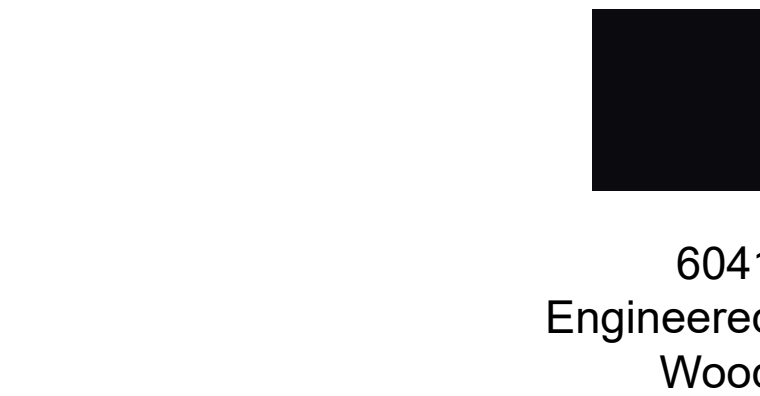
Ripple



Fissure



Diamond



PRODUCT  
SPECIFICATIONS



Width	Length	Solid Wood Veneer Thickness	Total Thickness
1220mm	2440mm	1.6mm	20mm

■ Natural Texture  
& Premium Touch Experience

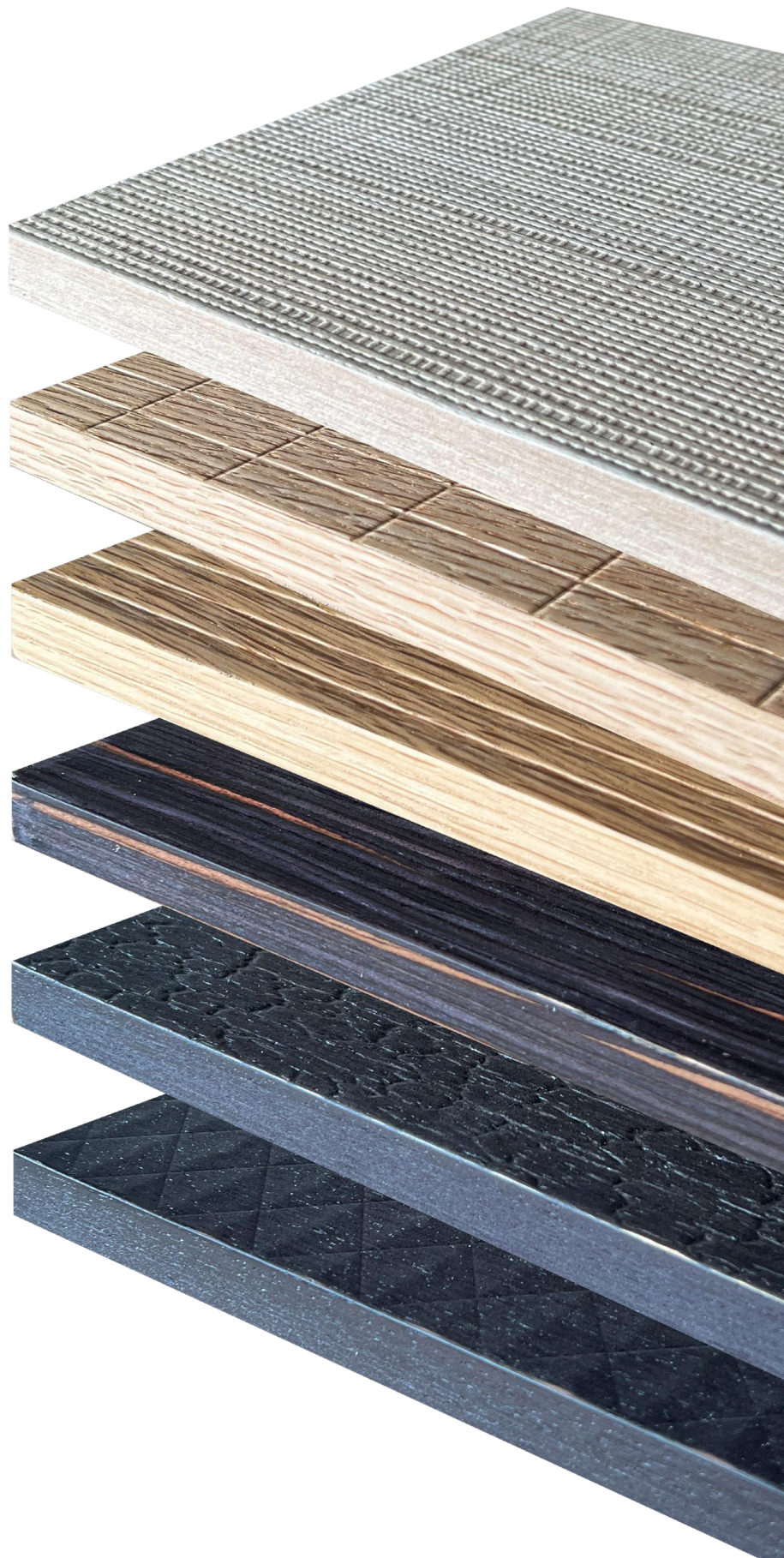
Made with a 1.6mm solid wood veneer surface layer, it fully retains the natural wood grain and smooth touch. Combined with 3D embossing technology, it creates a rich textured layer, enhancing both visual and tactile experiences.

■ Design Flexibility  
& Customizable Space

With a variety of textures and color options, this panel offers a high-aesthetic surface solution, providing extensive design freedom for various customization needs.

■ Superior Stability  
& No More Solid Wood Defects

Featuring multiple substrate options with uniform density and strong anti-deformation properties, this panel is highly resistant to climate changes, significantly reducing the risk of traditional solid wood defects like cracking and warping, while enhancing durability and lifespan.





Product type	Lamarty Italian painted natural veneer		
Base material	MDF		
Thickness range	20mm		
	Unit	Test method	Performance
GENERAL PROPERTIES			
Moisture content	%	EN 322:1993	6.4
Density	kg/m3	EN 323:1993	720
Flexural Modulus	MPa	EN ISO178	≥9000
Flexural strength	MPa	EN ISO178	≥80
Bending strength	MPa	EN 310	30.7
Tensile Strength	N	EN 319:1993	0.50
SURFACE PROPERTES			
Color measurement	-	DIN5033-4	0.4
Swelling in thickness	%	EN317	9.5
Color fastness	-	EN ISO 105-B02:2014	Grade 4
Wear-resistant surface	Revolutions	EN438	≥20
Surface stain resistance	Flowing water	EN ISO 26987:2012	Not affected
Water vapor resistance	Rating	EN438	5
Scratch resistant	Rating	EN438	≥4
Lightfastness	Grey scale rating	EN438	≥4
Resistance to stubbed cigarette	-	EN 1399:1997	level4
Acids resistance	Suitability	SEFA8-PL	Compliant
UV resistance	-	TS EN 4892	0.47
OTHER PROPERTIES			
Veneer thickness	mm	-	0.6
Veneer density	kg/m³	-	720
Formaldehyde content	mg/m³	EN13986	E1

Test Standard:

In house methodEN 319:1993, EN 323:1993, EN ISO 2808:2019 Method 4A, EN 322:1993, EN ISO26987:2012, EN ISO 2813:2014, EN 438-2:2016+A1:2018, Section 21, EN ISO 105-B02:2014, EN15187:2024, EN 1399:1997, Method A, Method B, EN 12664:2001, With reference to EN 717-1:2004

SCS Global Services does hereby certify that an independent audit has been completed and conformity to the applicable standard(s) has been confirmed for:

# Shanghai Lamarty Decoration Materials Co., Ltd.

No. 9284, Xinge Road, Xinqiao Town, Songjiang District, Shanghai City, Zhejiang, China

This single certificate covers the production of finger jointed wood, glued laminated timber and parts of furniture using the transfer system.

The facility(s) are hereby Chain of Custody certified to sell products as:

FSC 100%, FSC Mix

The assessment has been conducted by SCS Global Services in accordance with the protocols of the Forest Stewardship Council® A.C. (FSC®).

FSC Standard: FSC-STD-40-004

Certificate Code: SCS-COC-700320

Trademark License Code: FSC-C200732

Valid from: 22/04/2024 Expiry date: 21/04/2029

This certificate itself does not constitute evidence that a particular product supplied by the certificate holder is FSC-certified (or FSC Controlled Wood where applicable). Products offered, shipped or sold by the certificate holder can only be considered covered by the scope of this certificate when the required FSC claim is clearly stated on sales and delivery documents. The scope of this certificate is considered accurate on the date of issuance. The current validity and scope, including the full list of products, shall be verified on <http://info.fsc.org>. The certificate shall remain the property of SCS, and this certificate and all copies or reproductions of this certificate shall be returned to SCS immediately upon request. Where a certificate covers more than one site, the covered products and processes/ activities are performed by the network of Participating Sites, and not necessarily by each of them.

SCSglobal  
SERVICES



The mark of responsible forestry



*[Signature]*

Maggie Schwartz, Vice President, Program Development  
SCS Global Services  
2000 Powell Street, Ste. 600, Emeryville, CA 94608 USA

Printed: 4/22/2024



The mark of responsible forestry

## Certificate of Registration

This is to certify that

Jiangsu Buywin Co., Ltd.

江苏百闻国际展览装饰工程有限公司

"the certified site" has been certified in accordance with the requirements of the Forest Stewardship Council® A.C. using the FSC® Chain of Custody standards\* and that Jiangsu Buywin Co., Ltd. of

No. 91 Baixia Road, Baixia District, Nanjing City, Jiangsu Province, CHINA

is hereby licensed to use the FSC Logo on and sell as FSC certified all products listed on the attached FSC product schedule as FSC Mix; FSC 100%.

Certificate Registration Code: SA-COC-015102

Issue Number: 1.0

Licence Code: FSC-C206378

Issued By:

Soil Association Certification Limited  
Spear House, 51 Victoria Street  
Bristol BS1 6AD  
United Kingdom

Issue Date:

06 August 2024

Valid until the Renewal Date:

05 August 2029

Subject to successful annual surveillance

Signed on behalf of Soil Association Certification

*Meriel Robson*  
Meriel Robson, Director of Forestry

This certificate is based on audit by BCC, Inc. (CNCA-R-2002-016 granted by CNCA) and a certification decision by Soil Association Certification Ltd

CA-COC-006g-18

June 2022

© Prepared by Soil Association Certification Limited

\*This certificate is only valid for sale of FSC products when accompanied by a current product schedule. Validity of this certificate shall also be verified by checking the FSC database: [info.fsc.org](http://info.fsc.org) or by contacting Soil Association Certification: [soilassociation.org](http://soilassociation.org). This Certificate is the property of Soil Association Certification Ltd and all copies or reproductions of the certificate shall be destroyed or returned to the Soil Association Certification Ltd immediately on request.

A description of the products, sites or services that are included in the scope of the certificate may be obtained from Soil Association Certification on request. This certificate shall not constitute evidence that a particular product supplied by the certificate holder is FSC-certified (or FSC-controlled wood). Products offered, shipped or sold by the certificate holder can only be considered covered by the scope of this certificate when the required FSC claim is clearly stated on invoices and shipping documents.



CARB2  
compliant

CE



The mark of responsible forestry