

The image features a close-up, diagonal view of a wood veneer panel. The panel is composed of thin, parallel strips of wood, creating a textured, layered appearance. The color transitions from a dark, almost black hue on the left to a lighter, natural wood tone on the right. The lighting is dramatic, highlighting the grain and the embossed texture of the veneer.

**VENEER EMBOSSED
TEXTURE PANEL**

LAMARTY

Substrate Overview

① MDF

Naturally resistant to decay, insects, and mold with minimal odor. It offers superior flatness, stability, and moisture resistance compared to pine or poplar alternatives. An ideal, easy-to-process substrate for customized furniture finishes.

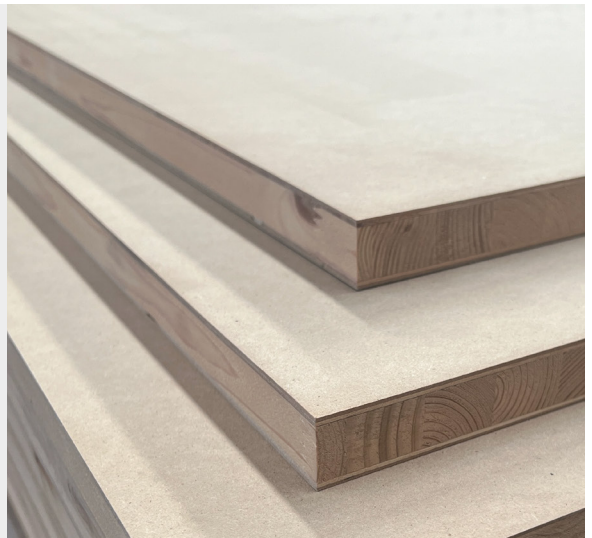
- Density: 720 kg/m³
- Moisture Content: 7.8%
- Grade: Veneer Grade
- Environmental: CARB P2



② Five-Layer Solid Wood Balance Board

Featuring a five-layer cross-grain structure treated under high heat and pressure, this board offers exceptional stability against deformation and cracking. Its optimized internal stress distribution enhances strength and durability, providing an easy-to-process solution for diverse customization needs.

- Density: 570 kg/m³
- Moisture Content: 6-8%
- Grade: Veneer Grade
- Environmental: CARB P2



③ Eucalyptus Plywood

Eucalyptus plywood offers exceptional strength and stability, effectively balancing internal stress to prevent cracking. With its dense structure and high moisture resistance, it provides superior nail-holding capacity, making it a premium choice for high-durability home and decorative applications.

- Density: 530 kg/m³
- Moisture Content: 6-8%
- Grade: Veneer Grade
- Environmental: CARB P2



Product Introduction

The veneer embossed texture panel consists of a three-layer structure:

Top Layer: 1.6mm solid wood veneer, Red Oak, Walnut, Smoked Eucalyptus and Engineered Wood

Core Layer: MDF, five-layer solid wood, and eucalyptus plywood

Bottom Layer: 50S same-color veneer



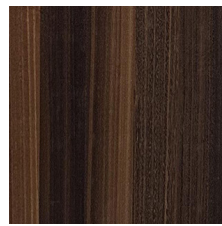
- **Dimensions:**1200mm x 2440mm
- **Veneer Thickness:**1.6mm
- **Total Thickness:**20mm
- **Grade:** CARB P2



Red Oak



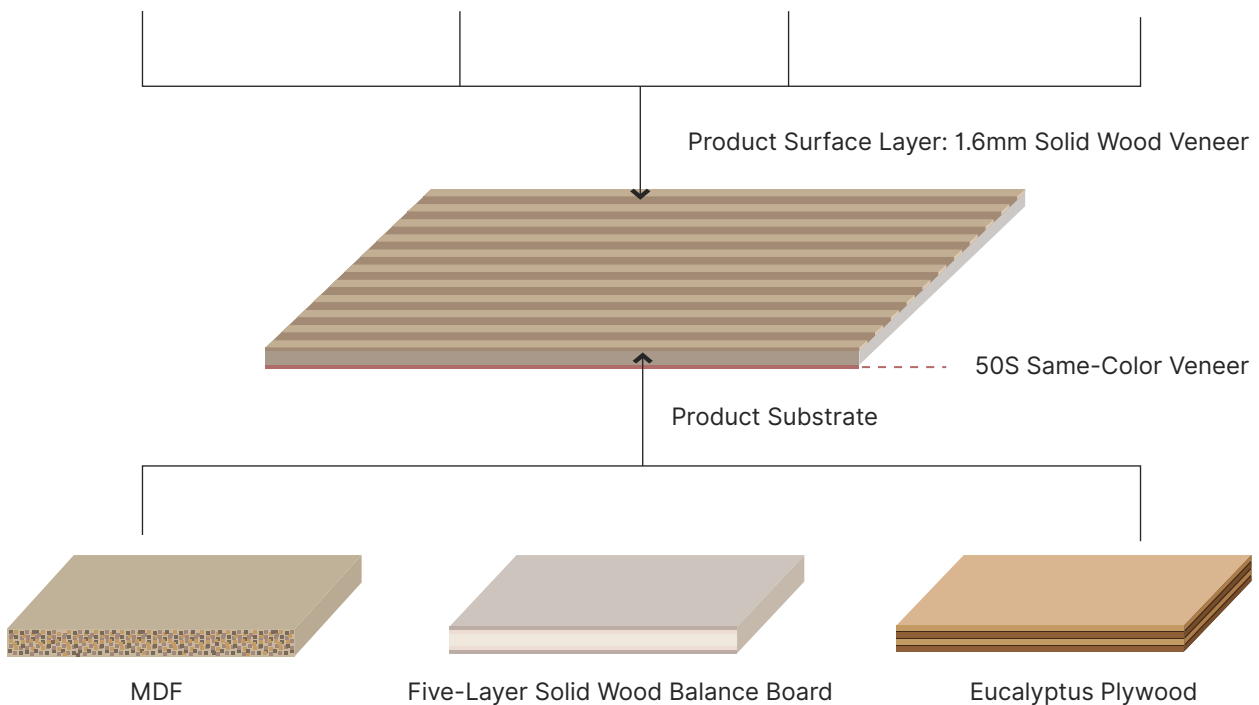
Walnut



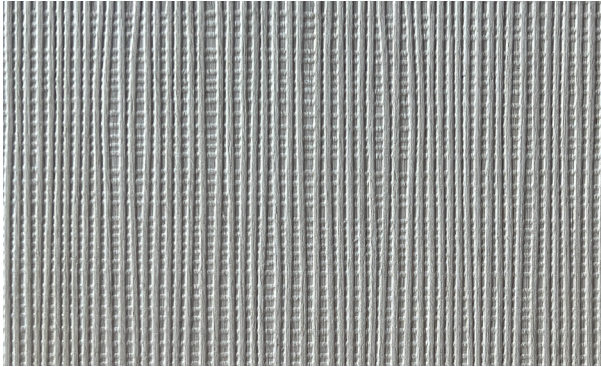
Smoked Eucalyptus



Engineered Wood



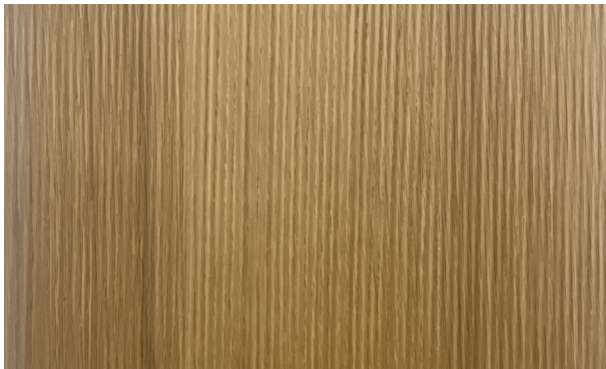
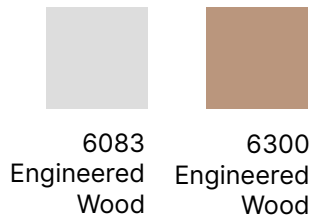
Product Introduction



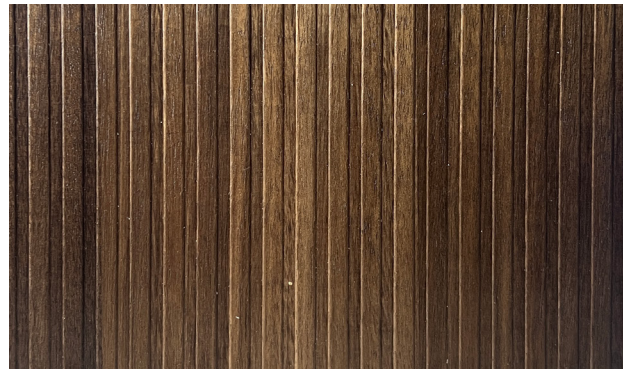
Fabric Texture



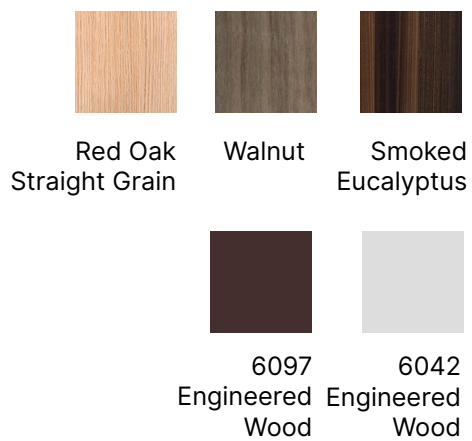
Checkered



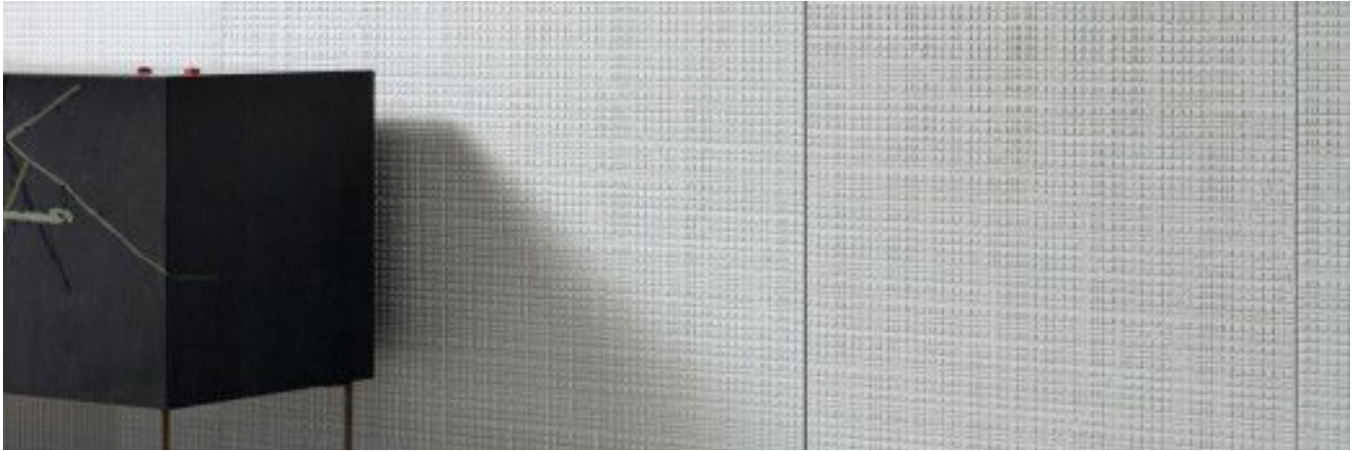
W Texture



Stripe



Product Advantages



Authentic Wood Sensation Premium 1.6mm Veneer

Combining thick solid wood veneer with 3D embossing to perfectly restore the primal texture and warm touch of natural timber.

Limitless Design Freedom Aesthetic Versatility

A rich palette of colors and grains providing high-end surface solutions that empower diverse customization and creative visions.

Climate-Resistant Stability Engineered Reliability

Our multi-substrate options resist warping and cracking, ensuring structural integrity across varying climates and environments.

Professional-Grade Durability Extended Longevity

Precision engineering enhances wear resistance and service life, effectively eliminating the common flaws of traditional solid wood.



Product Introduction

DOP

PRODUCT CATEGORY	Lamarty Veneer Embossed Texture Panel		
Substrate	MDF		
	Unit	Reference Standard	Performance
GENERAL PROPERTIES			
Moisture Content	%	EN 322:1993	6.4
Substrate Density	kg/m ³	EN 323:1993	712
Bending Modulus Of Elasticity	MPa	EN ISO178	≥9000
Bending Strength	MPa	EN ISO178	≥80
Static Bending Strength	MPa	EN 310	30.7
Internal Bond Strength	N	EN 319:1993	0.50
SURFACE PROPERTIES			
Color Measurement	-	DIN 5033-4	0.4
Thickness Swelling Rate	%	EN 317	9.5
Abrasion Resistance	Revolutions	EN 438	≥20
Resistance To Water Vapor	Rating	EN 438	5
Scratch Resistance	Rating	EN 438	≥4
Light Fastness	Grade	EN 15187:2024	≥6
Stain Resistance	Suitability	SEFA8-PL	Compliant
Uv Resistance Performance	-	TS EN 4892	0.47
Color Fastness	Grade	EN ISO 105-B02:2014	4
OTHER PROPERTIES			
Formaldehyde Emission		EN 717-1:2004	CARB P2

Test Standards: EN 319:1993, EN 323:1993, EN ISO 2808:2019 Method 4A, EN 322:1993, EN ISO 26987:2012, EN ISO 2813:2014, EN 438-2:2016+A1:2018 Clause 21, EN ISO 105-B02:2014, EN 15187:2024, EN 1399:1997 Method A and Method B, EN 12664:2001, Ref. EN 717-1:2004



LAMARTY

Room 706, Building B, Twin Towers, No. 668 Xinzhuan Road, High-tech Park,
Songjiang District, Shanghai

+86 183 1718 7556

info@lamarty-cn.com

www.lamarty-cn.com