

# Step-by-Step Installation



Thank you for choosing YCDECK for your boat! For a permanent, bubble-free finish, careful preparation and the correct method are key. Please follow this guide step by step :)

## Pre - Installation: Tools & Conditions

### ➤ Tools You Will Need:

- ✓ Acetone or Isopropyl Alcohol (99%+)
- ✓ 100% Terry Cloth Towels or Papers
- ✓ Carpet Roller (large & small), Sharp Utility Knife
- Masking Tape



### ➤ Ideal Conditions

- ✓ Temperature: 15°C - 30°C
- ✓ Humidity: Below 65%
- ✓ Avoid: Dry, shaded area. Avoid direct sunlight or rain.

## Critical Surface Preparation

### ➤ Deep Clean & Dry (24 Hours Before Installation )

- ✓ Wash the deck thoroughly with marine-safe soap.
- ✓ Let it dry completely for at least 24 hours. Moisture will ruin the bond.

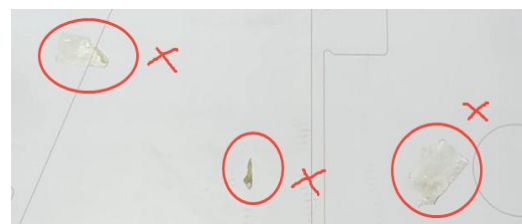
### ➤ Final Wipe-Down (Immediately Before Installation)

- ✓ Choose suitable Cleaner: Isopropyl Alcohol: For clean, smooth, painted surfaces.  
Acetone: For older, chalky, stained, or ceramic-coated surfaces.
- ✓ Damp a towel with the cleaning agent, wring it out, and wipe the entire surface.



**Critical Check: Remove ALL old glue residue.**

**Any leftover residue will cause failure.**

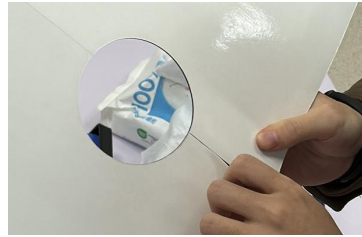
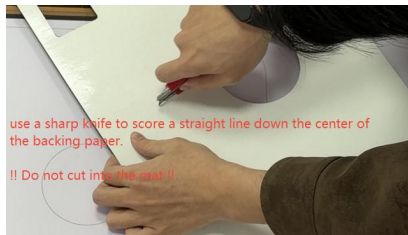


**Enjoy your new, secure & stylish YCDECK deck mat!**

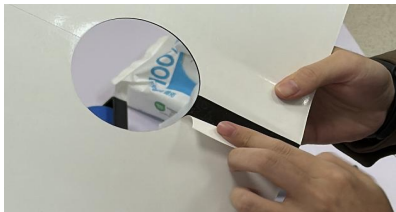
# Step-by-Step Installation



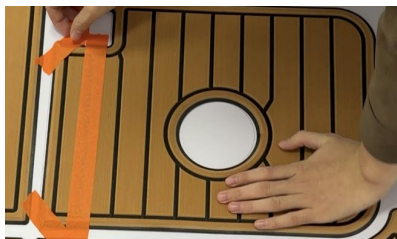
- **Position First:** Before peeling off the backing paper, make sure all YCDECK EVA mats are correctly positioned.
- **Cut the Backing Paper:** Turn the first mat over, use a sharp knife to score a straight line down the center of the backing paper only. **Do not cut into the mat.**



- **Pre-tear the edges:** From the center cut, fold slightly outwards to create a crease, temporarily separating the adhesive from the backing paper in that area, but do not completely peel it off.



- **Secure & Apply First Half:** Place the mat in position. Secure half of the mat to the deck with masking tape. Then, lift the untaped side and peel the backing from the center crease. As you peel, immediately press the mat down firmly to avoid air bubbles.



- **Apply Second Half:** Remove the tape. Then peel the remaining backing papers. Same as last step, as you peel, immediately press the mat down firmly to avoid bubbles.



- **Repeat:** Continue this process for all remaining mats.

Enjoy your new, secure & stylish YCDECK deck mat!

# Step-by-Step Installation



## ➤ Rolling for Permanent Bonding

After all materials are installed:

- ✓ Use a small roller to firmly press down on all edges, holes, and cuts.
- ✓ Use a large roller over the entire surface, following the mat's grain

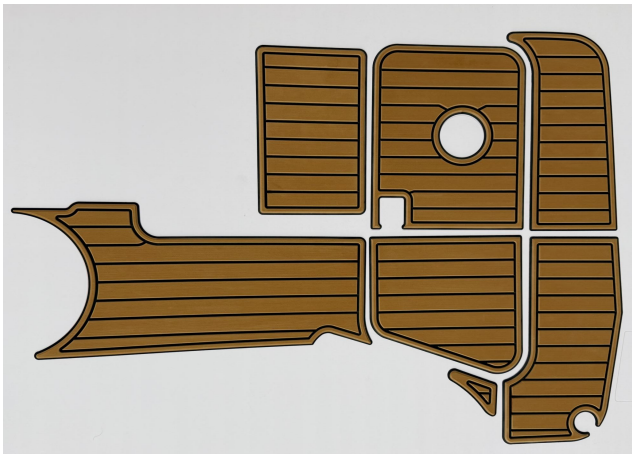
## ➤ Eliminate Air Bubbles

If bubbles appear after installation:

- ✓ Puncture: Use a sharp pin/knife to prick the bubble (along the grain).
- ✓ Press: Gently squeeze air out by hand.
- ✓ Reseal: Roll the area flat.
- ✓ For stubborn bubbles: Use the "heel trick" -- apply firm pressure with your heel for 1 min.

## ➤ Final Curing

- ✓ Adhesive requires **48-72 hours** to fully cure.
- ✓ **Keep completely dry** -- no water or moisture during this time.



Enjoy your new, secure & stylish YCDECK deck mat!