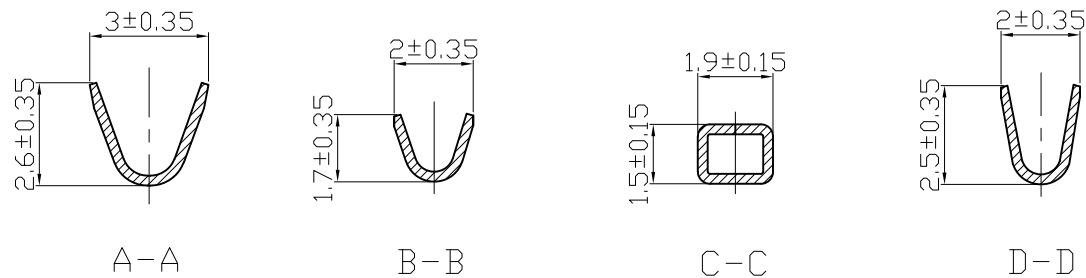
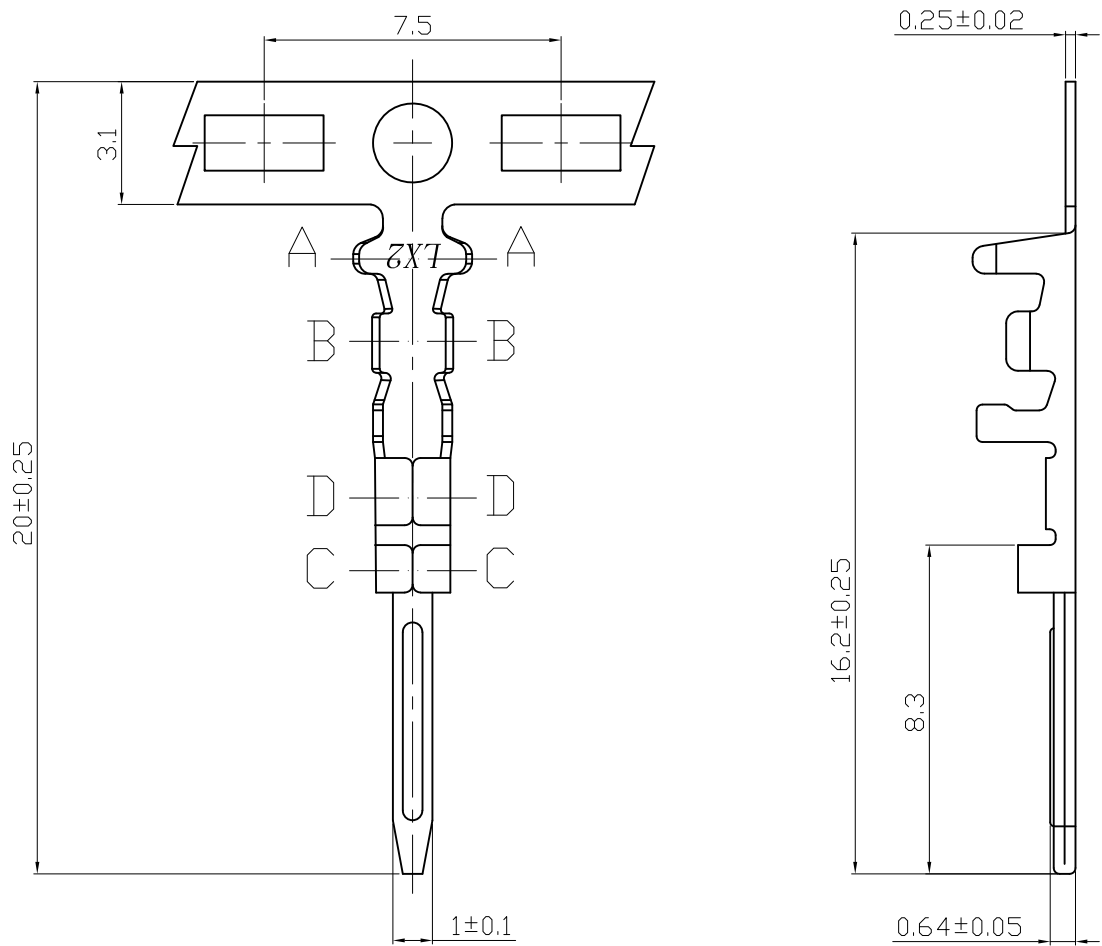


设计变更 REVISIONS

NO.	MARK	变更记录 DESCRIPTION	REV	DATE

备注 NOTES:

1. 材质: 黄铜 T=0.25  
Material: Brass T=0.25
2. 表面处理: 镍/锡  
Surface Treatment: Ni/Tin
3. 额定电流: 3.0A AC/DC  
Current rating: 3.0A AC/DC
4. 接触电阻:  $\leq 20m\Omega$   
Contact Resistance:  $\leq 20m\Omega$
5. 适配塑件: L250031-ANR-V\*(SMC-NR)  
Matched HSG: L250031-ANR-V\*(SMC-NR)
6. 适用线规: AWG22#~AWG24#  
Apply To Gauge: AWG22#~AWG24#
7. 适用温度范围:  $-25^{\circ}C \sim +85^{\circ}C$   
Applicable Temperature Range:  $-25^{\circ}C \sim +85^{\circ}C$
8. 环保要求: RoHS/REACH  
Environmental Requirements: RoHS/REACH



未注公差范围 No tolerance range is noted		
.***	±0.05	±0.5°
**	±0.15	±1°
*	±0.20	±2°
.	±0.30	±3°
制图 DRAWING	吴晓平	
审核 AUDIT	邓小芳	
批准 APPD	赵成钢	

**linsine** 温州市林鑫电子有限公司  
WenZhou LinXin Electronics Co., Ltd.

产品规格: PART MODEL:	L250031-02RT-H1
产品名称: PRODUCT NAME:	SMC-A-CT
产品料号: PART NO:	LX6H250031-01
客户料号: CUSTOMER P/N:	
发行日期 Release date:	

	UNITS	SCALE	SHEET	REV
	mm	1:1	1/1	A/0