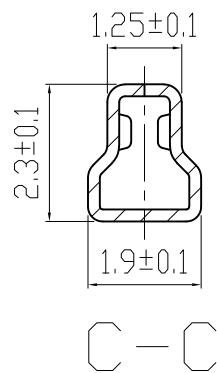
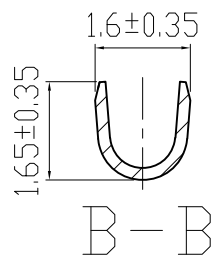
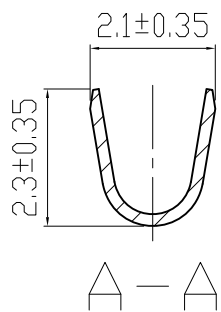
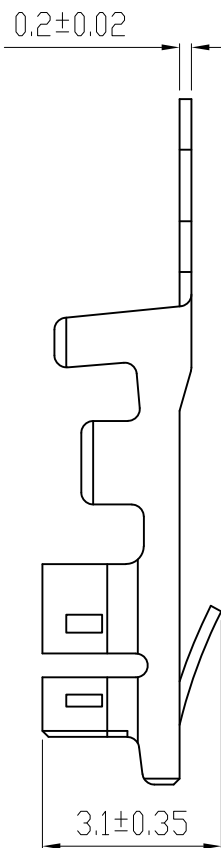
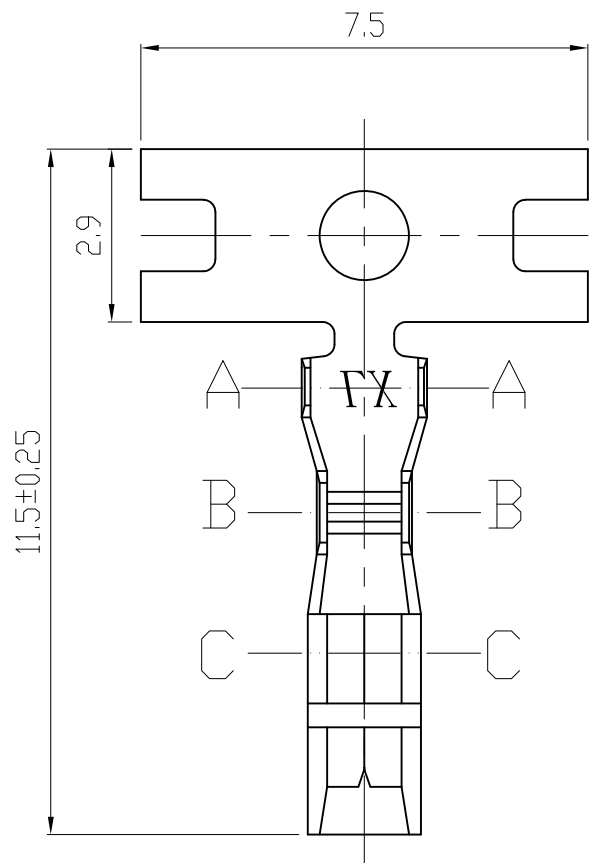


设计变更 REVISIONS

NO.	MARK	变更记录 DESCRIPTION	REV	DATE

备注 NOTES:

1. 材质 : 黄铜/磷铜 T=0.2
Material: Brass/Bronze T=0.2
2. 镀层: 镍/锡
Plating: Ni/Tin
3. 额定电流 : 3A AC, DC
Current rating: 3A AC, DC
4. 接触电阻 : $\leq 20\text{m}\Omega$
Contact Resistance: $\leq 20\text{m}\Omega$
5. 适用线规: AWG#26 to #22
Apply to gauge: AWG#26 to #22
6. 适配端子 : L2500**-02PT (25044/25045插针)
Matched Terminal: L2500**-02PT (25044/25045插针)
适配塑壳: L250007-ANP (SX003系列)
Matched Housing: L250007-ANP (SX003 series)
7. 适用温度范围 : $-25^{\circ}\text{C} \sim +85^{\circ}\text{C}$
Applicable Temperature Range: $-25^{\circ}\text{C} \sim +85^{\circ}\text{C}$
8. 环保要求: RoHS/REACH



未注公差范围 No tolerance range is noted		
.***	±0.05	±0.5°
.**	±0.15	±1°
.*	±0.20	±2°
.	±0.30	±3°

linsine 温州市林鑫电子有限公司
WenZhou LinXin Electronics Co., Ltd.

制图 DRAWING	邓小芳	产品规格: PART MODEL:	L250007-02PT-N1						
		产品名称: PRODUCT NAME:	YST-025CL3/SX003-PT						
审核 AUDIT	吴晓平	产品料号: PART NO:	LX6N250008-01						
		客户料号: CUSTOMER P/N:							
批准 APPD	赵成钢	发行日期 Release date:							
		<table border="1"> <tr> <td>UNITS</td> <td>SCALE</td> <td>SHEET</td> <td>REV</td> </tr> <tr> <td>mm</td> <td>1:1</td> <td>1/1</td> <td>A/1</td> </tr> </table>		UNITS	SCALE	SHEET	REV	mm	1:1
UNITS	SCALE	SHEET	REV						
mm	1:1	1/1	A/1						