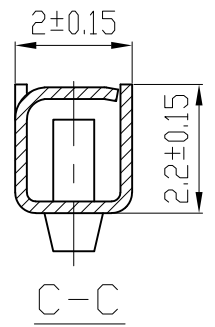
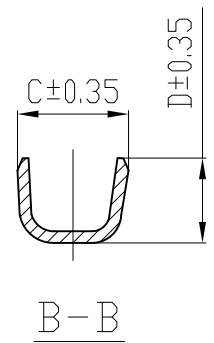
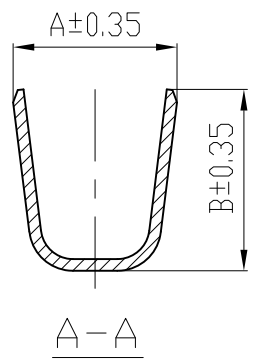
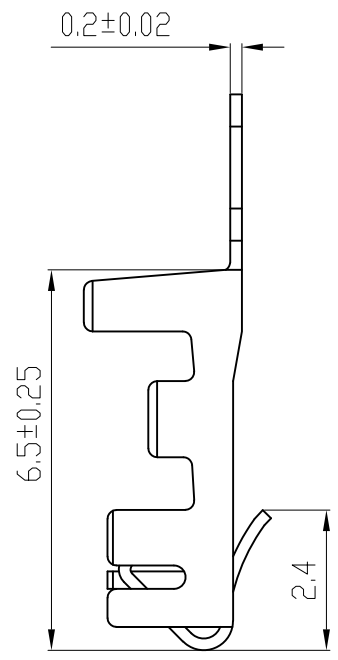
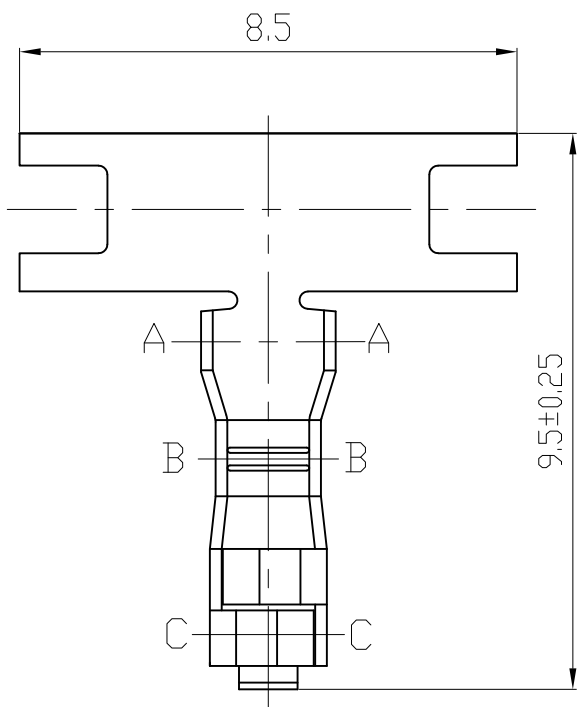


设计变更 REVISIONS

NO.	MARK	变更记录 DESCRIPTION	REV	DATE

- 备注 NOTES:
1. 材质 : 磷铜 T=0.2  
Material: Bronze T=0.2
  2. 镀层: 锡  
Plating: Tin
  3. 额定电流 : 3.0A AC, DC  
Current rating: 3.0A AC, DC
  4. 接触电阻 :  $\leq 20m\Omega$   
Contact Resistance:  $\leq 20m\Omega$
  5. 适用线规: AWG#28 to#22  
Apply to gauge: AWG#28 to#22
  6. 适配塑壳: L250020-ANP (XH系列)  
Matched Housing: L250020-ANP (XH Series)  
适配插针: 0.64\*0.64  
Adapting pins: 0.64\*0.64
  7. 适用温度范围 :  $-25^{\circ}C \sim +85^{\circ}C$   
Applicable Temperature Range:  $-25^{\circ}C \sim +85^{\circ}C$
  8. 环保要求: RoHS/REACH  
Environmental requirements: RoHS/REACH



产品规格 Part Model	产品名称 Name	产品料号 Part No	尺寸 Dimension				压接范围 Wire Range
			A	B	C	D	
L250020-01PT-N1	XH-PT小脚	LX6N250020-02	2.6	2.3	1.6	1.25	AWG#28-26
L250020-02PT-N1	XH-PT	LX6N250020-01	2.8	3.1	1.9	1.45	AWG#24-22

未注公差范围 No tolerance range is noted		温州市林鑫电子有限公司 WenZhou LinXin Electronics Co., Ltd.					
***	±0.05					±0.5°	
**	±0.15					±1°	
*	±0.20					±2°	
.	±0.30	±3°	产品规格: PART MODEL: L250020-NPT-N1				
制图 DRAWING	邓小芳	产品名称: PRODUCT NAME: XH-PT					
审核 AUDIT	吴晓平	产品料号: PART NO: LX6N250020-**					
批准 APPD	赵成钢	客户料号: CUSTOMER P/N:					
发行日期 Release date: 2026. 1. 6				UNITS mm	SCALE 1:1	SHEET 1/1	REV A/2