

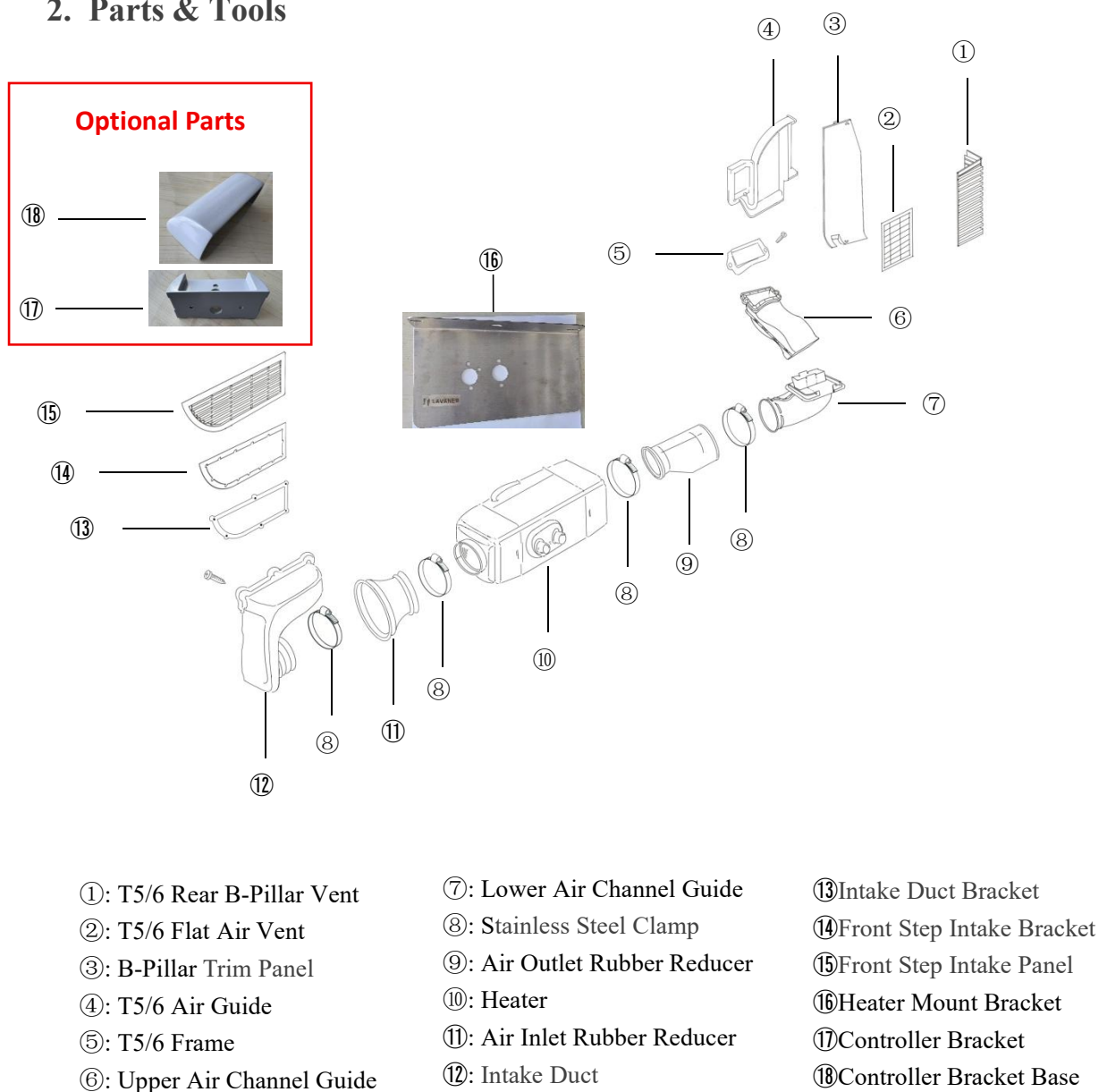
# VW Transporter Air Duct System Installation Guide

## (Premium Version)

### 1. Product Overview

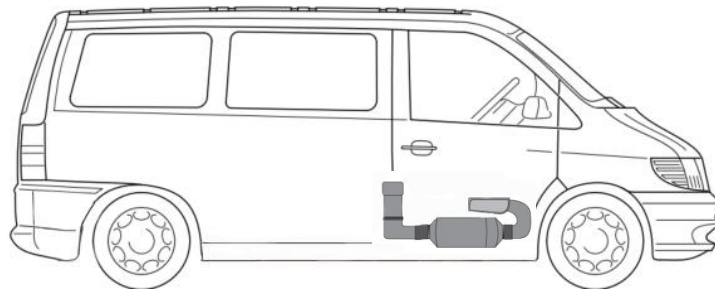
This parking heater installation kit is designed exclusively for Volkswagen T5/6 model. It ensures seamless compatibility with vehicle structure, electrical systems, and fuel lines.

### 2. Parts & Tools



### 3. Installation Location

When using this kit, install the heater on the right side of the vehicle's chassis. Ensure the heater is in its normal horizontal position and rotate the heater 90 degrees, then secure it to the frame rail by using the T6-specific mounting bracket.



### 4. Installation steps

#### Step 1: Remove Interior Components

- Detach the following parts in sequence:

- [1] Right B-pillar handle
- [2] B-pillar trim panel
- [3] Front step light
- [4] Front step trim panel



## Step 2: Remove Undercarriage Protection

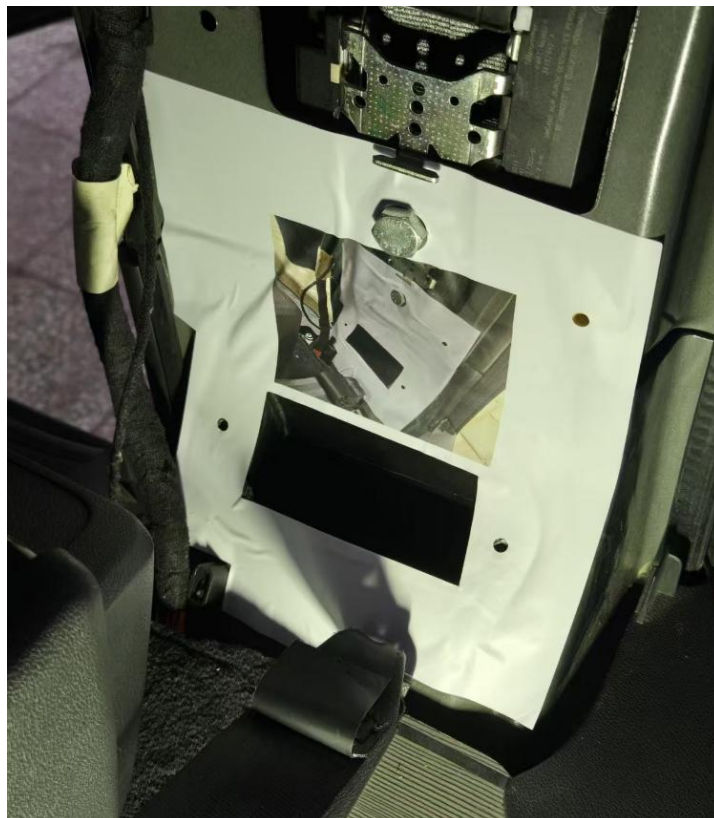
Unfasten and remove the **right-side undercarriage protection**.



## Step 3: Create Vent Openings

- On the B-pillar reinforcement panel:

Cut a 10.5 cm × 5 cm square outlet opening on the bottom of the B-pillar reinforcement panel (Drilling Template included in the kit).



- On the front step reinforcement panel:

Cut the irregular-shaped intake opening (Drilling Template included in the kit).



#### Step 4: Install Intake & Outlet duct

- Fix intake duct (part ⑫) and intake duct bracket (part ⑬) to the front step reinforcement panel opening using six M5\*16 self-tapping screws.



- Connect Upper Air Channel Guide and Lower Air Channel Guide (part ⑥ & ⑦), then fix them onto the B-pillar reinforcement panel opening with outlet Frame (Part ⑤) using two M5\*20 self-tapping bolts.





### Step 5: Install Fuel Pump

- Install the fuel pump with its rubber holder using M5\*35 bolt.



### Step 6: Install Heater Bracket

- Use 2 M6\*30 bolts and rivet nuts to mount the **heater mount bracket** (Part ⑱) on the **chassis frame rail**. (To make the bracket sturdier, it's optional to install one M8\*30 bolt & nut in the middle)



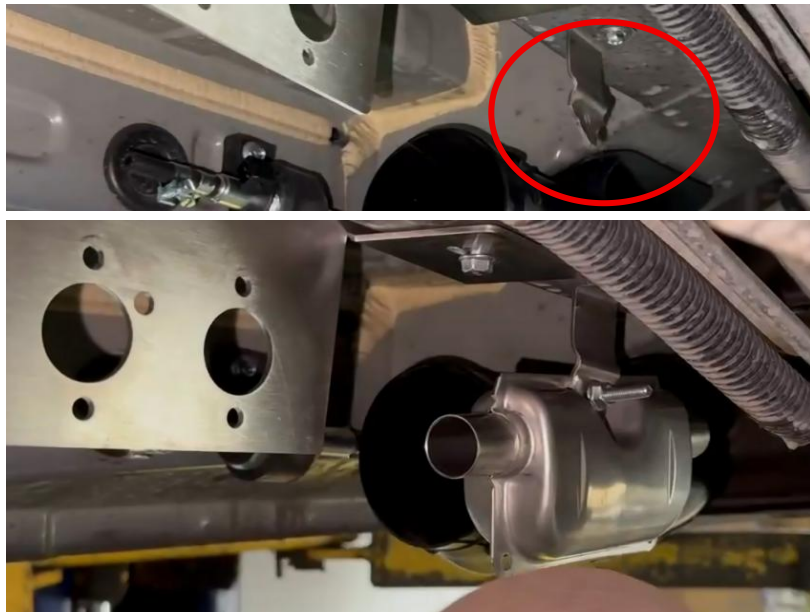
### Step 7: Install Heater & Connectors

- Rotate the heater 90° **clockwise** for alignment and fix it onto the bracket with M6 nuts.
- Connect the **intake duct** (front step opening) and **air channel guide** (B-pillar opening) with rubber connectors and secure with stainless steel clamps.



### Step 8: Install Exhaust System

- Use 1 M5\*35 self tapping screw to install the exhaust silencer bracket onto the chassis frame rail (near outlet duct, as shown in the picture).



- Connect exhaust pipes with the heater combustion exhaust port, then connect the exhaust silencer with exhaust pipes on both sides, and fix every connection point with clamps (ensure correct positioning of the 2 pipes.).



### Step 9: Install Intake System

- Use 1 M5\*35 self-tapping bolt to install the intake silencer with rubber clamp on the right side of the chassis (near inlet duct, approximate 7cm to the front).



- Connect air intake pipe with the heater combustion intake port, then connect the intake silencer with intake pipe, and fix every connection point with clamps.



### Step 10: Install wire harness

- Connect Heater Harness

Route the **heater branch** from the main harness to the heater unit and secure the connector.



- Connect Fuel Pump Harness

Connect the **pump branch** to the fuel pump socket and secure the connector.





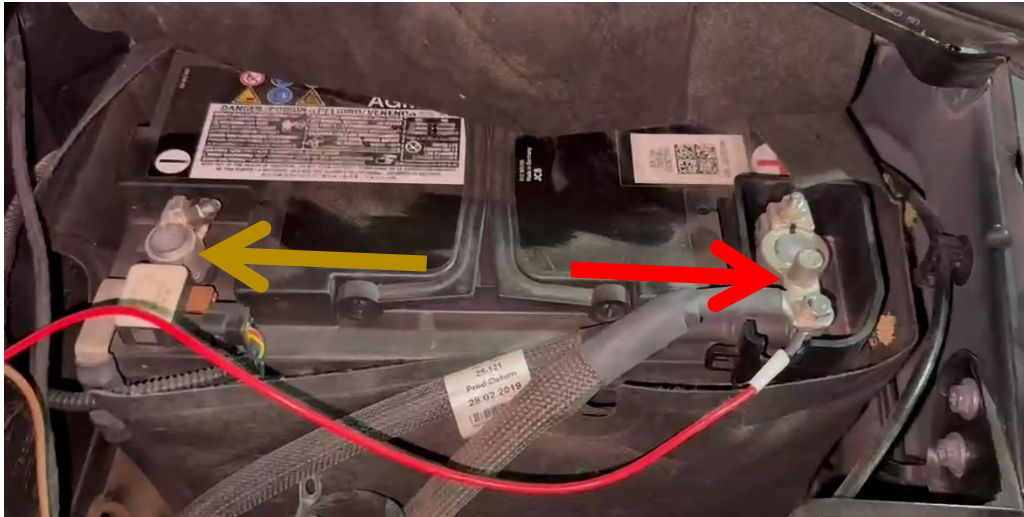
- **Power Supply Connection**

Feed the power tap end (12V+/GND cables) through the chassis to the engine compartment.

**Battery terminal connection:**

**Red wire (+)** → Connect to battery positive terminal.

**Brown wire (-)** → Bolt directly to ground point.



- **Secure Excess Harness**

Coil surplus length into loops, then bind with cable ties and anchor to chassis holes/braces (if possible). Be sure to place the fuse box in a prominent location.





### Step 11: Install Inlet Components

- Cut openings and drill holes on the original trim panels base on the dimensions of front step intake bracket (part ⑭).



- Install the front step intake panel and front step intake bracket to the **front step trim panel** using eleven M3\*6 self-tapping screws and flat washers.

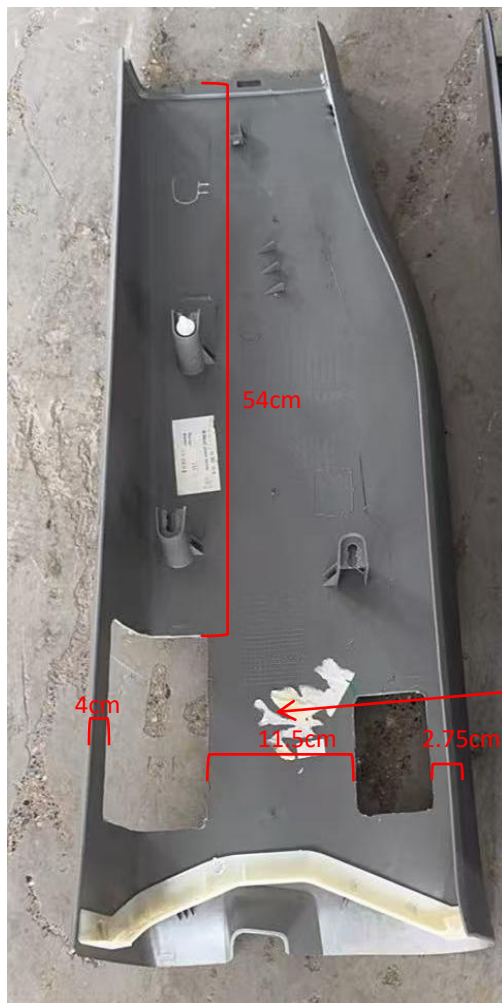


- Put the modified front step trim panel and front step light back in place.



### Step 12: Install Outlet Components

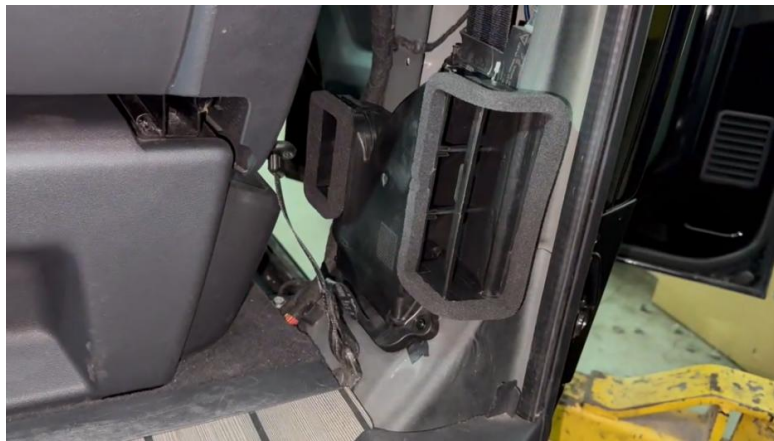
- Cut 2 vent openings on the B-pillar trim panel according to the dimensions of the T5/6 Air Guide (part ④).



- Install Rear B-Pillar Vent (Part①) & flat air vent (Part②) on the B-pillar trim panel [snap on]

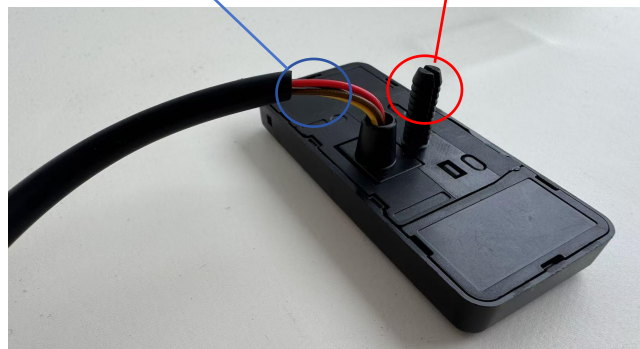


- Connect T5/6 Air Guide (part④) to the T5/6 Frame(part⑤)[snap on]



- **Controller Harness Routing**

Drill a 12mm (for controller wire) and a 7mm (for controller holder) hole respectively on the B-pillar trim panel.

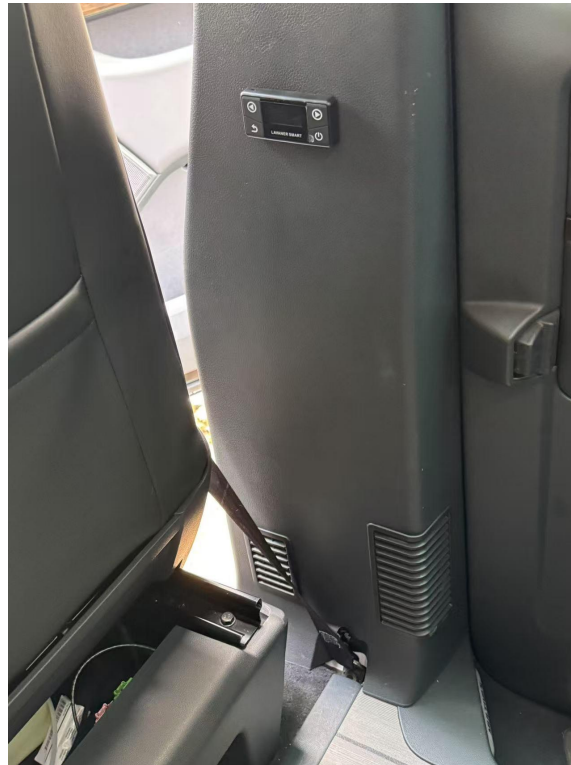




Thread the controller wire and controller holder through the holes on the trim panel, and use double-sided tape to fix the controller on the B-pillar trim panel

Pass the **controller branch harness** through the floor near the right passenger seat. Route vertically along the A-pillar, and connect with the controller wire.

Put the modified B-pillar trim panel back. Installation is complete.



## OPTIONAL PARTS

- **Controller Harness Routing**

Carefully detach the **top trim panel** using a non-scratch pry tool

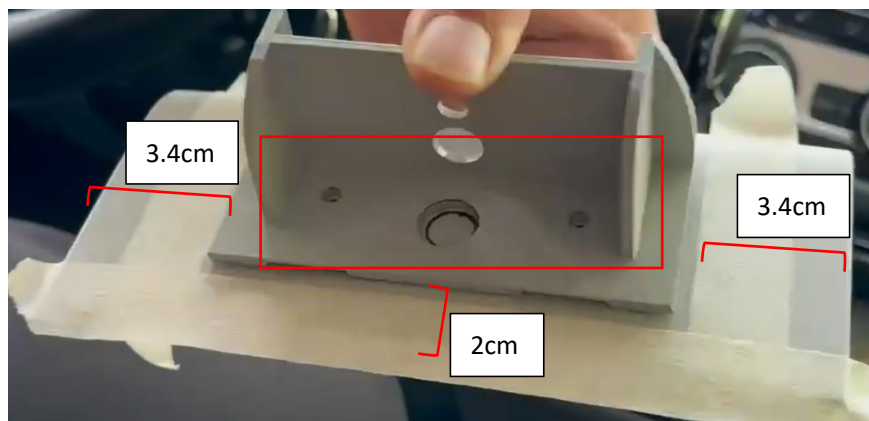


Pass the **controller branch** through the floor near the right passenger seat.  
Route vertically along the A-pillar to the overhead console cavity.



\*\* Connect the controller branch harness to the controller and conduct a test to see if the heater can operate normally.

- Align the **controller bracket** (Part⑩) with the trim panel's center position, and drill holes of corresponding size at marked positions (Two M5 screw holes, with a center hole diameter of 12mm).



- Install the bracket to the trim panel using M5\*12 flange bolts and nuts.



- Thread the controller's wire through the circular hole, then apply 3M double-sided tape to the back of the controller, and attach the controller to the bracket. Snap the bracket into the bracket base (Part⑰).



- Connect the controller wire to the harness and put the trim panel back.

