

HERZESD



Industrial Anti-Fatigue Mats

From Herzesd



Heavy-duty Anti-fatigue Mat Interlock series

503 Spherical



Product Features:

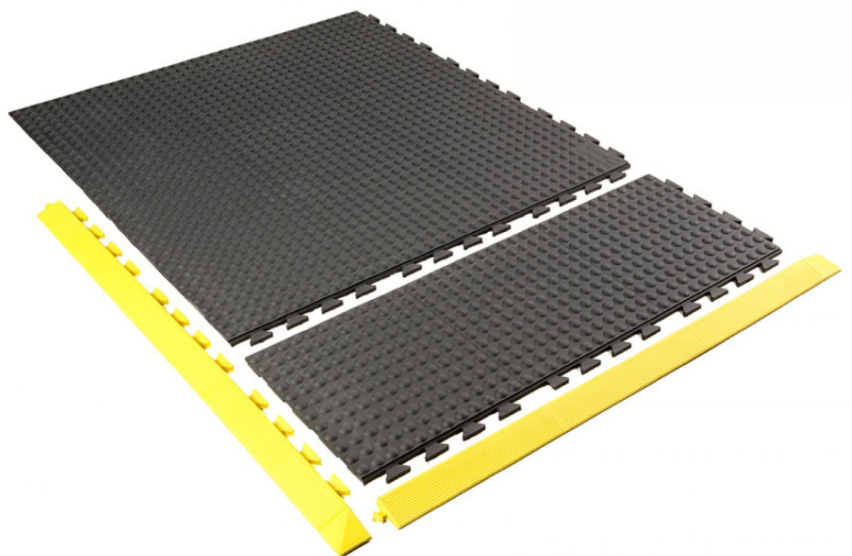
1. Ergonomically designed for softness and comfort, effectively reducing fatigue for standing workers.
2. Made of 100% rubber, it is wear-resistant, durable, and anti-slip. It can withstand weights over 100 kg and support standing work for more than 20 hours a day without collapsing.
3. Features a sturdy locking system that ensures the mats won't detach or shift even under vehicle pressure. It is easy to install manually without any tools. If the workstation changes, the mats can be reassembled to the required size without needing to repurchase, reducing procurement costs.
4. Suitable for various irregular or geometrically shaped work areas, with dimensions ranging from 0.9 to 1000 meters in length and 0.3 to 50 meters in width. It can be installed in U-shaped, L-shaped, circular, or other configurations.

Size:

0.91MX0.91M Thickness: 16MM

0.91MX0.61M Thickness: 16MM

0.91 M X 0.3M Thickness: 16MM



Application:

- 1) Industry: automobile manufacturing, automobile parts manufacturing, aerospace manufacturing, mechanical and electronic manufacturing, warehousing and logistics;
- 2) Area: Suitable for geometric work areas; ultra-wide and ultra-long assembly line work areas; work areas where the production equipment environment changes frequently; translation

Model Number:

W503 Standard (normal environment)

E503 Antistatic (antistatic sensitive area)

FBK Black concave edge / FYL Yellow concave edge

MBK Black convex edge / MYL Yellow convex edge

Technical standards:

1. All materials comply with ROHS standards.
2. Anti-static type: Produced according to the ANSI/ESDS2020-2007 standard, with surface resistivity and grounding resistance values being the same: RTT is less than 1×10^8 ohms (less than 100 M ohms).

Heavy-duty Anti-fatigue Mat Interlock series

504 Diamond Pattern



Product Features:

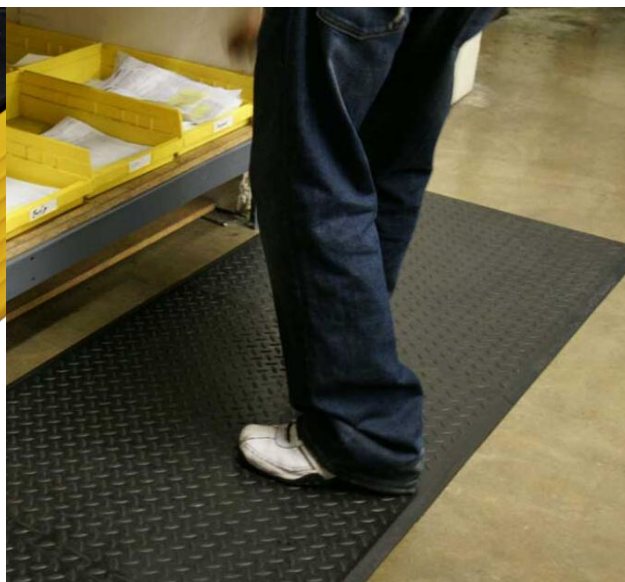
1. Suitable for heavy-duty, medium oil contamination, high-temperature, and high-intensity industrial processing environments, such as metal cutting and welding.
2. Able to withstand light to medium loads from carts or trolleys, reducing the distance between operators and workpieces, thereby enhancing production efficiency.
3. Made of 100% rubber, it is wear-resistant, durable, and anti-slip.
4. Features a sturdy locking system that ensures the mats won't detach or shift even under vehicle pressure. It is easy to manually install without tools. In case of workstation changes, the mats can be reassembled into the desired size without needing new purchases, reducing procurement costs.
5. Allows flexible installation using a DIY locking system. Suitable for large areas or geometrically shaped workstations such as U-shaped, L-shaped, or circular configurations, with a minimum width of 0.6 meters and a minimum length of 0.9 meters.

Durability: ★★★★★

Anti-Fatigue Comfort: ★★★★★

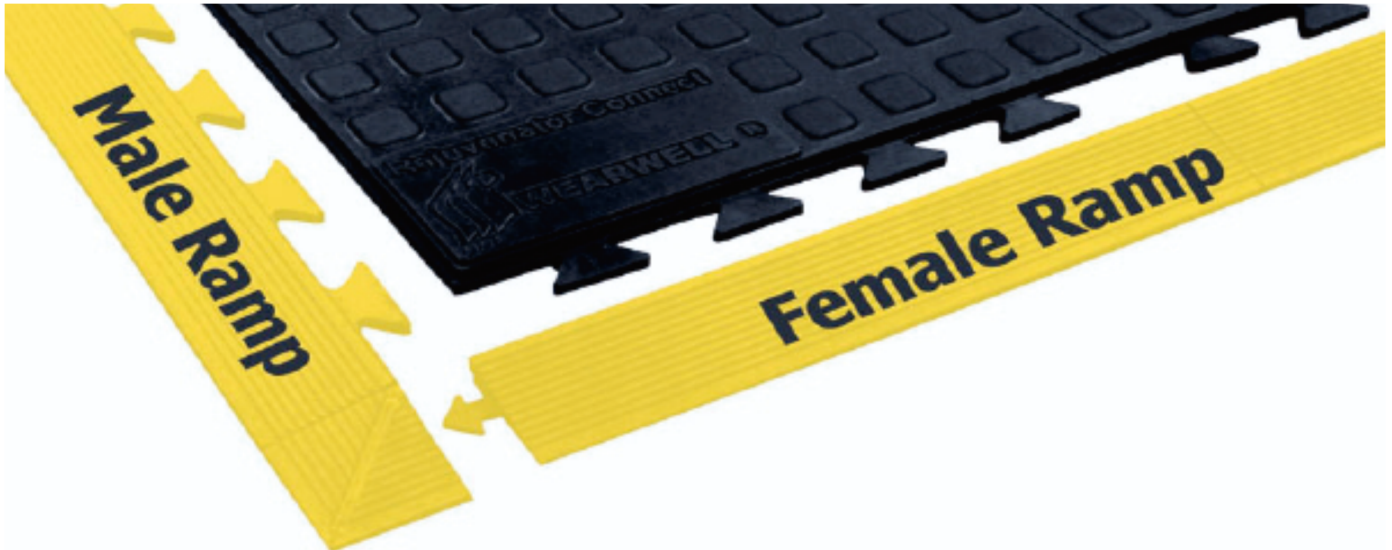
Model and Dimensions:

- **W504: 0.91 M x 0.61 M, Thickness: 16mm**
- **Color: Black or Gray (Other colors available upon request)**
- **Edge Options:**
 - FYL: Yellow beveled edge**
 - MYL: Yellow raised edge**
 - FBK: Black beveled edge**
 - MBK: Black raised edge**



Comfort Anti-fatigue Mat (PU)

502 Mat Interlock series



Product Features:

1. Designed according to ergonomics, soft and comfortable, effectively reducing fatigue for standing workers.
2. Made of 100% polyurethane material, capable of supporting weights of over 100 kilograms, withstanding work intensities of over 20 hours per day without collapsing.
3. Firm locking system design, resistant to motorcycle rolling and not dislodging. Easy to manually install without the need for any tools. If work positions change, required sizes can be reconfigured without the need for reordering or customization, reducing procurement costs.
4. Suitable for various non-standard or geometric work areas, with dimensions ranging from 0.9 to 1000 meters in length and 0.3 to 50 meters in width. Can be laid out in geometric shapes such as U-shaped, L-shaped, circular workstations.

Durability Strength: ★★★★★☆

Anti-Fatigue Comfort: ★★★★★★

Suitable for:

1. Industries: Automotive manufacturing, automotive parts manufacturing, aerospace manufacturing, mechanical and electronic manufacturing, warehouse logistics.
2. Areas: Suitable for geometric work areas, extra-wide and extra-long assembly line work areas, work areas with changing production equipment environments.

Models and Sizes:

W502

0.91M X0.91M thickness 16MM

0.91M X0.31M thickness 16MM

FYL Yellow Concave Edge Strip / MYL Yellow Convex Edge Strip

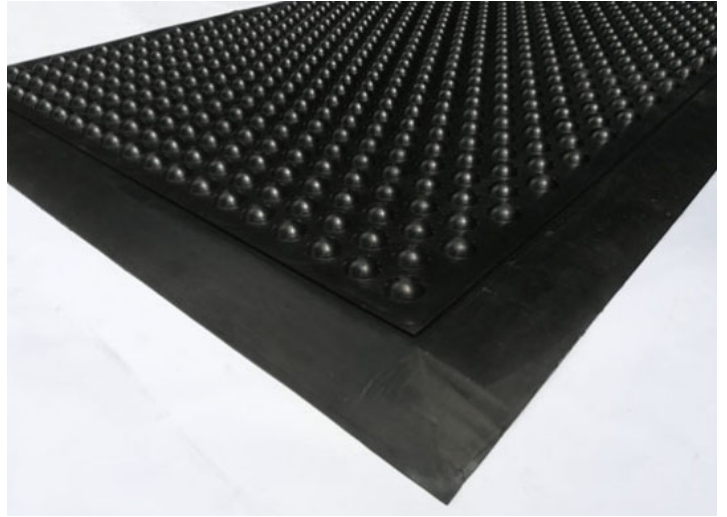
FBK Black Concave Edge Strip / MBK Black Convex Edge Strip



930 first-generation spherical floor mat

Durability Strength ★★☆☆☆

Anti-Fatigue Comfort: ★★☆☆☆



A498 Single Layer Foam Floor Mat

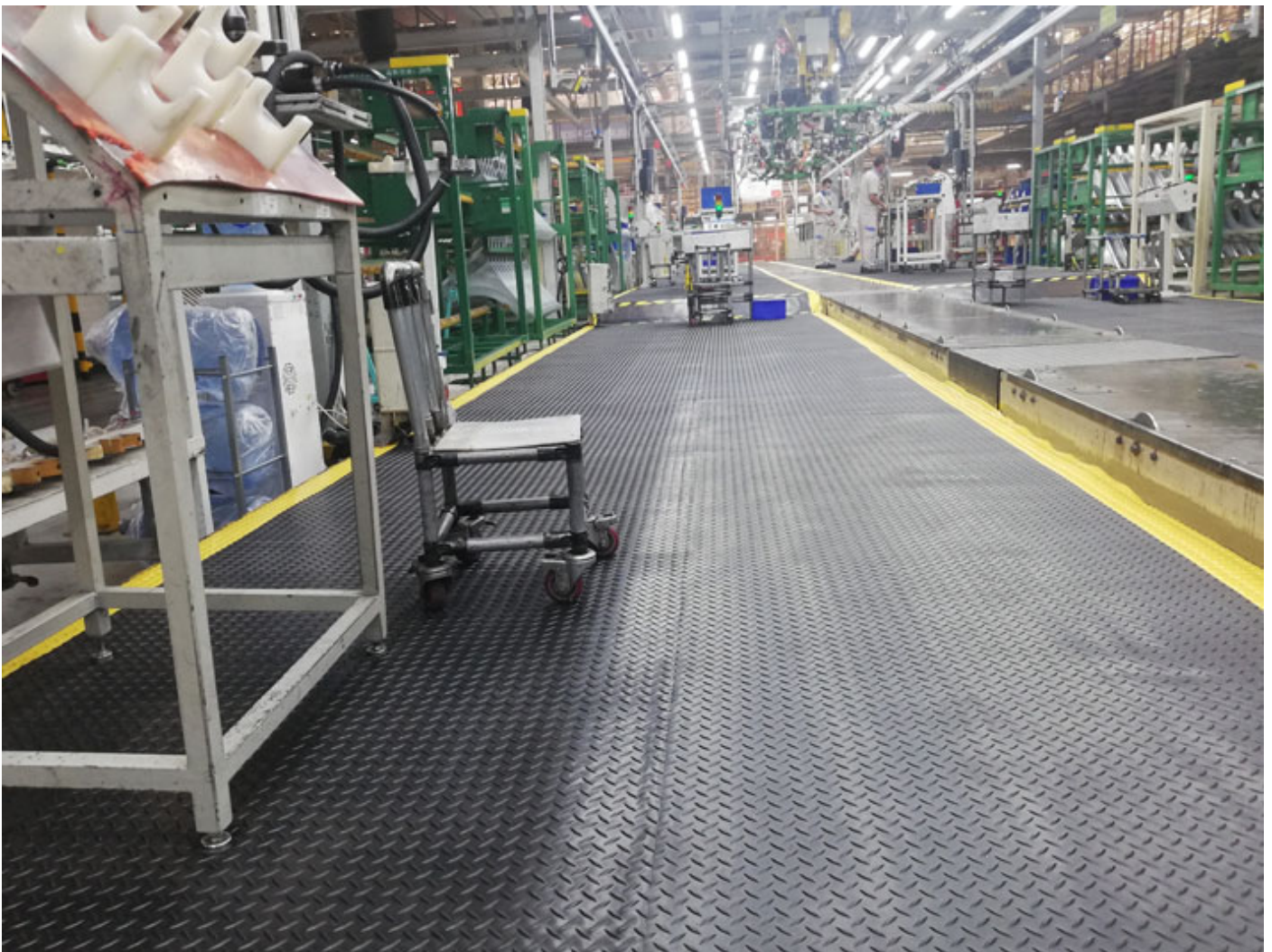
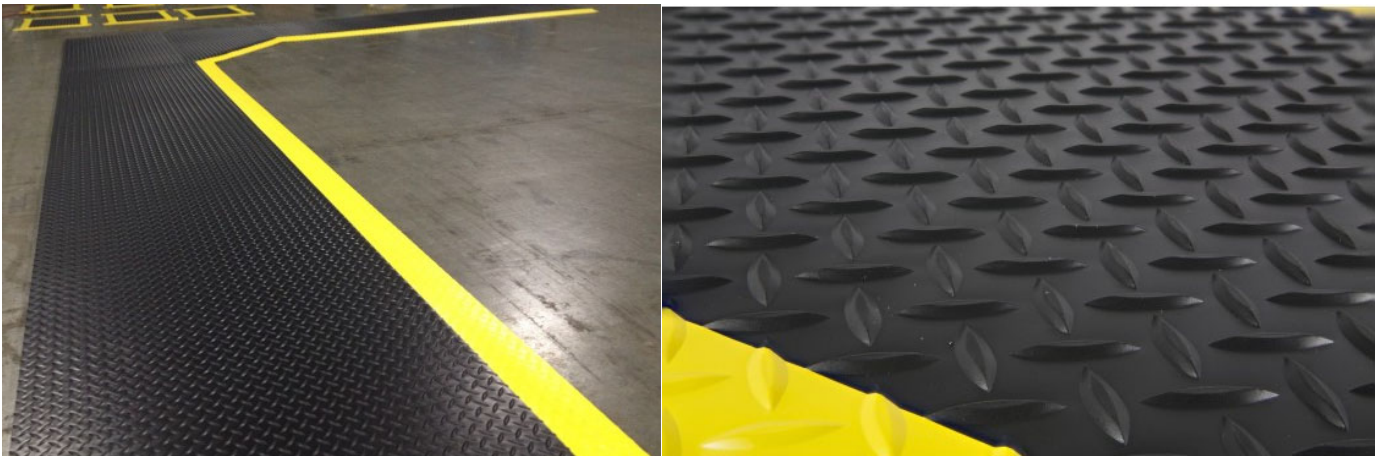
Durability Strength ★★☆☆☆

Anti-Fatigue Comfort: ★★☆☆☆



Basic anti-fatigue floor mat (Diamond Pattern)

418



Product Features:

The first generation anti-fatigue floor mat effectively reduces fatigue for standing individuals through the elasticity of foam;

1. **Construction:** Surface layer made of PVC or rubber material, bottom layer of foam (can choose from materials like EPDM, EVA, PVC foam), bottom layer can be fully enclosed with rubber for a neat appearance.
2. **Pattern:** Iron plate pattern, slip-resistant and visually appealing, with the option to choose yellow safety edges for added safety protection. Colors available include black, grey, green, blue, etc.
3. **Dimensions:** Length up to 20 meters, width between 0.4 to 1.2 meters, thickness ranging from 9-40mm, customizable; **Anti-static:** Can meet various anti-static or conductive performance requirements based on anti-static level requirements.

Suitable for:

Customers such as cost-conscious distributors, traders, Taiwanese-funded enterprises, private enterprises, etc.

Industries: Automotive manufacturing, automotive parts manufacturing, aerospace manufacturing, mechanical and electronic manufacturing, warehouse logistics.

Model Classification:

1. **A418** Light to Medium Load Type (up to 60kg for 12 hours):

Surface layer PVC, middle layer EPDM/EVA foam, bottom layer rubber-plastic;

Durability Strength: ★★☆☆☆ Anti-Fatigue Comfort: ★★★★★

2. **WV418** Heavy Load Type (no weight or standing time limit):

Surface layer PVC, middle layer PVC foam, bottom layer rubber-plastic;

Durability Strength: ★★★★★ Anti-Fatigue Comfort: ★★☆☆☆

3. **A498** Light to Medium Load Type (up to 80kg): Single-layer PVC foam;

Durability Strength: ★★☆☆☆ Anti-Fatigue Comfort: ★★★★★

Product Models and Specifications

Model	Structure	Material	Size Options	Special Features
A418 Iron Plate	Rubber & Foam Layer	Rubber, EVA/EPDM	Customizable, width: 0.6m, length: 20m	Soft, cost-effective, suitable for cost-conscious dealers and traders
W418 Diamond Pattern	Rubber & Foam Layer	Rubber, PVC	Customizable, width: 1.2m/0.9m/0.6m, length: 20m	Durable and balanced between quality and cost, suitable for users prioritizing both
A498 Diamond Pattern	Pure Foam	Rubber, Synthetic Materials	Fixed sizes: 0.9m x 0.6m or customizable	Economical, easy to use, ideal for clean environments
930 Spherical	Pure Rubber	Natural Rubber	Customizable shapes and sizes available	Durable, comfortable, suitable for heavy-duty or mid-level oil-resistant environments
503 Spherical	Rubber	Synthetic Rubber	Customizable shapes and sizes available	Highly durable, suitable for heavy industrial environments
504 Diamond Pattern	Pure Rubber	Natural Rubber	Customizable shapes and sizes available	Heat and oil resistant, perfect for intense industrial environments

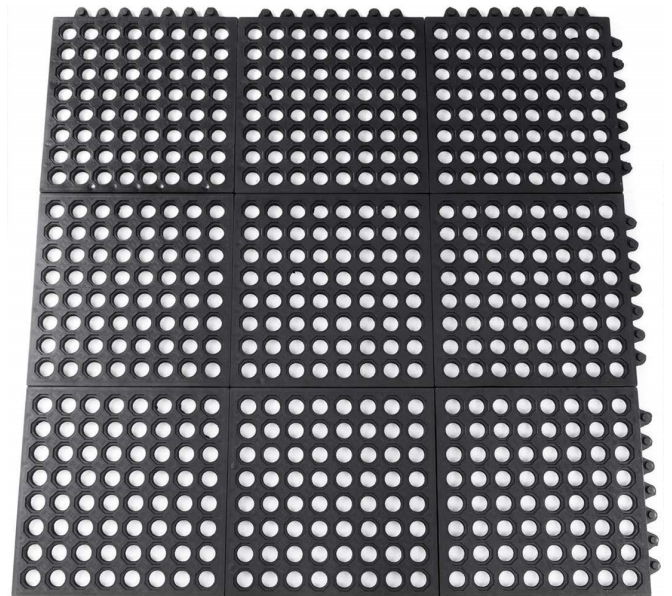
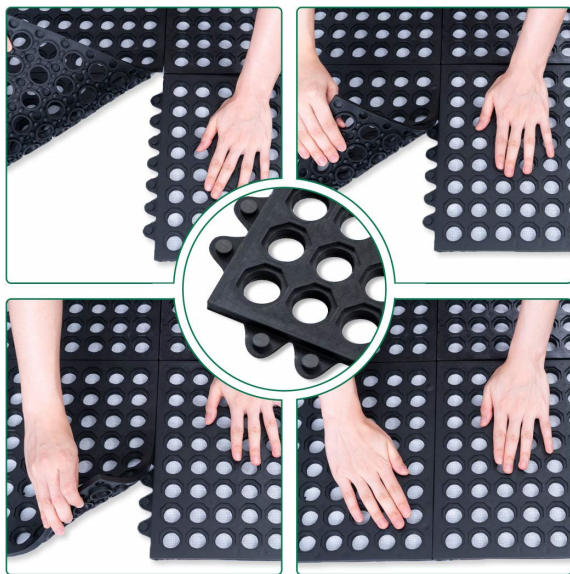
INTERLOCKING DRAINAGE RUBBER MAT

ZM104

Product Features:

1. Interlocking open holed tiles for general industrial use.
2. Soft, yet resilient rubber floor tiles.
3. Open holes allow efficient drainage of spilt liquids.
4. Effective anti-fatigue properties for prolonged standing.
5. Fatigue-Step conforms to Slip Resistance Test EN 13552 Category R10.

Q



3x3ft anti fatigue mat with interlocking,
use for kitchen or workshop
914x914mm

