



Chinese Style Pig Farrowing Crate

Our standard crates had been used by more than 200 pig farms around the world.

Size:

L2300*W4000mm

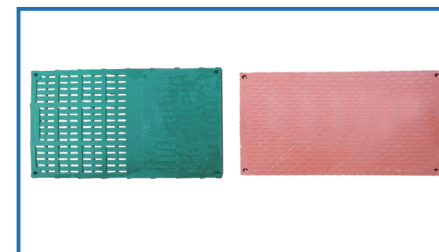
L2400*W3800 L2200*3600mm

Sow galvanized tube panels and frames with silent anti-crush bars and universal rear door.

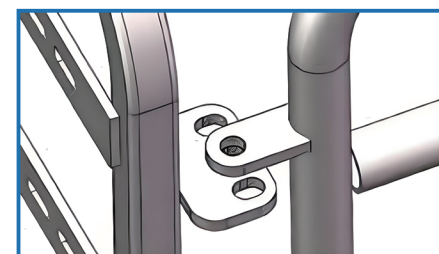
Climate Cover:

Plastic optional climate cover.

Square fiber glass climate cover.

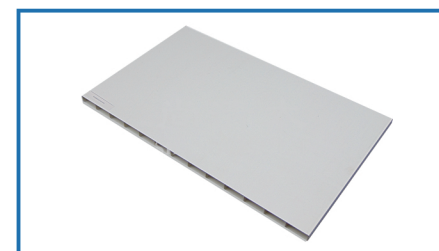


- 1 -BMC Plastic Slatted Floor+BMC Heating plate**
-2.3*4m,2.4*3.8m 2.2*3.6m



- 2 -WIDTH-ADJUSTABLE DESIGN**

Side panels of the sow cage could be installed with different hinge positions. So the crates are suitable for different genetic sows with a wide range of different body sizes.



- 3 -PVC PLANK WITH ZIG-ZAG SECTION DESIGN**

- Higher impact resistant
- Easier to clean and disinfect
- Section size:H500xT35mm
- Surface panel thickness: 2.0mm;
- Partition thickness:1.2mm;



- 4 -HIGH BACK STAMPING SOW'S TROUGH**

No feed would be pushed out to the front and wasted. Stamping bowl without dead corner for feed corrupt. The trough could be rotated out which makes it easy to clean.



- 5 -CAST IRON SUPPORT LEG**

- H: 30cm
- material:cast iron
- Cast iron support leg can provide the stable farrowing crate, which is long last using



- 6 -SOW FENCE**

- Material:hot -dip galvanized
- This farrowing bed is a combination of birthing and raising. After the sow gives birth, the piglets can still be raised on this farrowing bed.