

Urban Star 4KVA - 200KVA

Urban Star Series Inverter Technical Specification

U4KVA - U200KVA (3ph in / 3ph out)



Key Features:

- Pure Sine Wave Output
- Low DC Voltage, Saving System Cost
- Built-in PWM or MPPT Charge Controller
- AC Charge Current 0-45A Adjustable
- Wide LCD Screen, Clearly and precisely shows Icon Data
- 100% Imbalance Loading Design, 3 Times Peak Power
- Setting Different Working Modes Based on Variable Usage Requirements
- Various Communication Ports and Remote Monitoring RS232 / RS485 / APP(WIFI / GPRS)(Optional).

Application Area:

- Medium IDC data exchange center machine room, medium scale network management system, billing center, bank/securities settlement center, industrial process control applications, traffic control areas etc.
- Provide stable, reliable and safe solutions for families, islands, ships and other small photovoltaic power systems.

Shenzhen UPSen Electronic CO., Ltd.

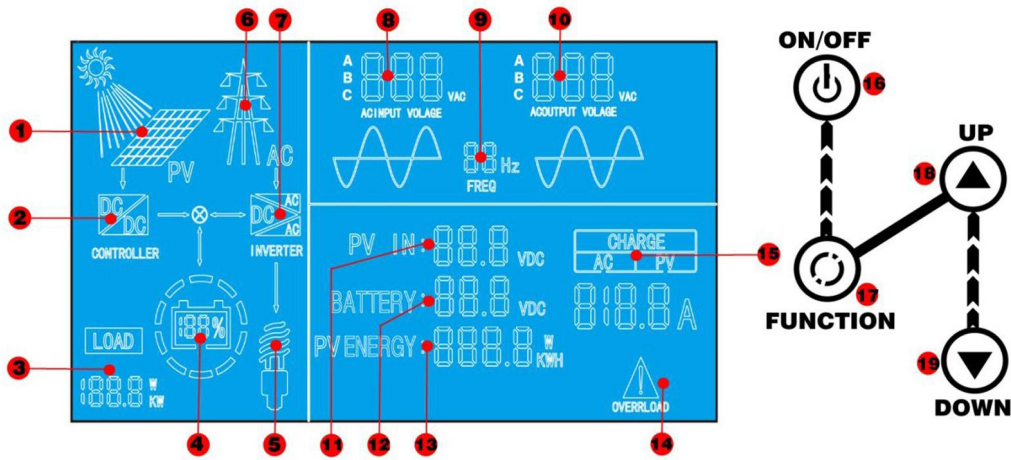
www.upsen.net

Technical Specification:

Model		4KVA	6KVA	7KVA	8KVA	10KVA	15KVA	20KVA	25KVA	30KVA	
Rated Power		3.2KW	4.8KW	5.6KW	6.4KW	8KW	12KW	16KW	20KW	24KW	
Peak Power(20ms)		9.6KW	14.4KW	16.8KW	19.2KW	24KW	36KW	48KW	60KW	72KW	
Start Motor		3HP	4HP	4HP	4HP	5HP	7HP	10HP	10HP	15HP	
Battery Voltage		48 / 96 / 192VDC					96 / 192 / 384VDC				
Built-in Solar Controller Charging Current(Optional)		PWM:10A-60A(48V system); 50A/100A(96V system);50A(192V system) MPPT:10A-100A(48V system);50A/100A(96V system)					PWM:10A-60A(48V system); 50A/100A(96V system);50A/100A(192V system) MPPT:10A-100A(48V system);50A/100A(96V system)				
Size(L*W*H mm)		565*300*775					725*365*1010				
Package Size(L*W*H mm)		625*360*895					785*425*1135				
N.W.(KG)		65	73	75	80	112	134	160	176	189	
G.W.(KG)		78	86	88	93	136	158	184	200	213	
Installation Method		Tower									
Model		40KVA	50KVA	60KVA	80KVA	100KVA	125KVA	150KVA	200KVA		
Rated Power		32KW	40KW	48KW	64KW	80KW	100KW	120KW	160KW		
Peak Power(20ms)		96KW	120KW	144KW	192KW	240KW	300KW	360KW	480KW		
Start Motor		15HP	20HP	25HP	30HP	40HP	50HP	60HP	80HP		
Battery Voltage		192 / 384VDC					384VDC				
Built-in Solar Controller Charging Current(Optional)		PWM: 100A-200A(192V / 384V system) / MPPT: 50A-100A(192V / 384V system)					PWM: 100A - 200A / MPPT: 50A / 100A				
Size(L*W*H mm)		720*575*1275					875*720*1380			1123*900*1605	
Package Size(L*W*H mm)		785*640*1400					980*825*1560			1185*960*1750	
N.W.(KG)		287	307	337	355	512	552	612	705		
G.W.(KG)		320	340	370	388	552	592	652	755		
Installation Method		Tower									
Input	DC Input Voltage Range	10.5-15VDC(Single Battery Voltage)									
	AC Input Voltage Range	380Vac / 400Vac ± 10%(Customized 190Vac/200Vac)									
	AC Input Frequency Range	45Hz-65Hz									
	Max AC Charging Current	0-45A(Depending on the Model)									
	AC Charging Method	Three-stage (Constant Current, Constant Voltage, Floating Charge)									
Output	Phase	3 / N / PE									
	Efficiency (Battery Mode)	85%									
	Output Voltage (Battery Mode)	380Vac / 400Vac ± 10%(Customized 190Vac / 200Vac)									
	Output Frequency (Battery Mode)	50 / 60Hz ± 1%									
	Output Wave (Battery Mode)	Pure Sine Wave									
	Efficiency (AC Mode)	>99%									
	Output Voltage (AC Mode)	Conforming to AC Input									
	Output Frequency (AC Mode)	Conforming to AC Input									
	Output Waveform Distortion (Battery Mode)	≤3%(Linear Load)									
	No Load Loss (Battery Mode)	≤1% Rated Power									
	No Load Loss (AC Mode)	≤2% Rated Power(Charger Does not Work in AC Mode)									
Battery Type (Optional)	No Load Loss(Energy Saving Mode)	≤10W									
	Phase	3 / N / PE									
	U0: Gel U.S.A	Charge Voltage:14V; Float Voltage:13.7V (Single Battery Voltage)									
	U1: A.G.M.1	Charge Voltage:14.1V; Float Voltage:13.4V(Single Battery Voltage)									
	U2: A.G.M.2	Charge Voltage:14.6V; Float Voltage: 13.7V(Single Battery Voltage)									
	U3: Sealed Lead Acid	Charge Voltage:14.4V; Float Voltage:13.6V(Single Battery Voltage)									
	U4: Gel European	Charge Voltage:14.4V; Float Voltage:13.8V(Single Battery Voltage)									
	U5: Open lead Acid	Charge Voltage:14.8V; Float Voltage:13.5V(Single Battery Voltage)									
U6: Calcium(Open)	Charge Voltage: 15.1V; Float Voltage:13.6V(Single Battery Voltage)										
U7: Sulphation Cycle	15.5V for 4hrs										
Customize Battery	Charge and Discharge Parameters of Different Types of Batteres(Such as Lithium Batteries,etc.) Can be Customized According to User Requirements.										
Protection	Battery Undervoltage Alarm	11V (Single Battery Voltage)									
	Battery Undervoltage Protection	10.5V (Single Battery Voltage)									
	Battery Overvoltage Alarm	15V (Single Battery Voltage)									
	Battery Overvoltage Protection	17V (Single Battery Voltage)									
	Battery Overvoltage Recovery Voltage	14.5V (Single Battery Voltage)									
	Overload Power Protection	Automatic Protection (Battery Mode, Circuit Breaker or Insurance (AC Mode)									
Alarm	Inverter Output Short Circuit Protection	Automatic Protection (Battery Mode, Circuit Breaker or Insurance (AC mode)									
	Temperature Protection	>90℃(Shut Down Output)									
	A	Normal Working Condition, Buzzer has No Alarm Sound									
Inside Solar controller (Optional)	B	Buzzer Sounds 4 Times Per Second When Battery Failure,Voltage Abnormality, Overload Protection									
	C	When the Machine is Turned on for the First Time, The Buzzer will Prompt 5 when the Machine is Normal									
	Charging Mode	MPPT or PWM									
	Charging Current	PWM: 10A / 20A / 30A / 40A / 50A / 60A (48V system); 50A / 100A / 150A / 200A (96V/192V/384V system) MPPT: 10A / 20A / 30A / 40A / 50A / 60A / 80A / 100A (48V system); 50A / 100A (96V/192V/384V system)									
	PV Input Voltage Range	PWM: 60V-88V (48V system); 120V-176V (96V system); 240V-352V (192V system); 480V-704V (384V system) MPPT: 60V-120V (48V system); 120V-240V (96V system); 240V-360V (192V system); 480V-640V (384V system)									
	Max PV Input Voltage (At the Lowest Temperature)	PWM: 100V (48V system); 200V (96V system); 400V (192V system); 750V (384V system) MPPT: 150V (48 system); 300V (96V system); 450V (192V system); 750V(384V system)									
Environment	PV Array Maximum Power	48V system: 560W / 1120W / 1680W / 2240W / 2800W / 3360W / 4480W / 5600W; 96V system: (PWM: 5.6KW / 11.2KW) / (MPPT: 5.6KW / 5.6KW*2); 192V system: (PWM: 11.2KW / 22.4KW / 16.8KW*2 / 22.4KW*2) / (MPPT: 11.2KW / 11.2KW*2); 384V system: (PWM: 22.4KW / 44.8KW / 33.6KW*2 / 44.8KW*2) / (MPPT: 22.4KW / 22.4KW*2)									
	Standby Loss	≤3W									
	Maximum Conversion Efficiency	>95%									
Working Mode	Battery First / AC First / Saving Energy Mode										
Transfer Time	≤4ms										
Display	LCD										
Thermal Method	Cooling Fan in Intelligent Control										
Communication(Optional)	RS232 / RS485 / APP (WIFI/GPRS)										
Environment	Operating Temperature	-10℃ ~ 40℃									
	Storage Temperature	-15℃ ~ 60℃									
	Noise	≤65dB									
	Elevation	200m (More Than Derating)									
Humidity	0%-95% (No Condensation)										
Warranty	1 Year										

Note:
1. Specifications are subject to change without prior notice;
2. Special voltage and power requirements can be customized according to the actual situation of users.

Display Panel



- PV Input Available
- Solar Controller Under Charging
- Three Phase AC Loads Display (Alternate display each phase)
- Battery Capacity
- Three Phase AC Output
- AC Input Available
- Inverter Working Mode
- Three Phase Input Data (Alternate display each phase)
- Three Phase Output Frequency
- Three Phase Output Data (Alternate display each phase)
- Display working mode code when working
d1: AC Priority/d2:ECO/d3: DC Priority
Fault mode will display fault code
- Battery Voltage
- Total PV Energy Generation
- Fault Alarm
- AC Charging Current / PV Charging Current
(Alternate Display of each)
- Power ON/Off Button
- Function Button
- UP Button
- Down Button

Application:

