



The logo for TORCH features a stylized sun with orange rays rising above the word 'TORCH' in a bold, green, blocky font with a black outline.

拓 驰

YIWU TORCH ELECTRONIC CO., LTD.

Add: NO.10 OF 3RD ST, WUHUA RD, YIWU 322000, ZHEJIANG, CHINA

Add: NO.223, Tuanruan Industrial Zone, XIDIAN, NINGBO 315600, ZHEJIANG, CHINA

Tel: 0579 8537 2520

Fax: 0579 8537 5121

E-mail: [joyce@torchlightyiwu.com](mailto:joyce@torchlightyiwu.com)

Website: [www.torchlightyiwu.com](http://www.torchlightyiwu.com)

Skype: joycelee0615

WhatsApp: 0086 152 6796 1520

Wechat: 0086 152 6796 1520

## TL-3090

Material: Aluminum alloy  
Size: 20\*20\*95mm  
Bulb Type: 1\*LED  
Mode: ON-OFF  
Batter: 1\*AA  
Feature: 365 UV or White Light



## TL-8025

Material: Aluminium alloy  
Size: 28\*115/125mm  
Bulb: XPE  
Mode: high-low-strobe  
Battery: built in battery  
USB Charging  
Feature: Clip, Zoom



## TL-8051

Material: Aluminium  
Size: 28\*115/125mm  
Bulb: XPE+COB  
Mode, xpe: high-low-strobe  
cob: white-strobe  
Battery: built in battery  
USB Charging  
Feature: Zoom, Hook, Magnet



## TL-8137

Material: Aluminum Alloy  
 Size: 42\*34\*167/185mm  
 Bulb: XHP50  
 5 Modes: high-mid-low-strobe-sos  
 Battery: 1\*26650/1\*18650/3\*AAA  
 Type-C USB charging  
 Feature: Zoomable; Power Display



## TL-8138

Material: Aluminium  
 Size: 60\*34. 5\*250/275mm  
 Bulb: XHP70+COB  
 Mode: High-Low-Strobe  
 Battery: 2\*26650/2\*18650  
 Type-C USB charging  
 Feature: Zoomable; Power Display



## TL-8278

Material: Aluminium  
 Size: 27\*75mm/27\*110mm  
 Bulb: 3\*XHP35  
 Mode: high-middle-low-Strobe  
 long press: strobe  
 Battery: 1\*18350/1\*18650  
 Type-C USB Charging  
 Feature: Clip; Magnet



## TL-8287

Material:Aluminium  
 Size:27\*75mm/27\*110mm  
 Bulb:3\*XHP35  
 Mode:high-middle-low-Strobe  
 Battery:1\*18350/1\*18650  
 Type-C USB Charging  
 Feature:Hammer; Cutter; Magnet



## TL-8299

Material:Aluminium  
 Size:33\*33\*168/176mm  
 Bulb:White Laser  
 Mode:high/low/strobe  
 Battery:1\*26650/1\*18650/3\*AAA  
 USB-C input & output  
 Zoomable, Power display



## TL-8307

Material:Aluminum alloy  
 Size:36\*28.5\*139/154mm  
 Bulb:Laser+SMD  
 Mode,laser:high-low-strobe  
 -white smd-red-red strobe  
 Battery:built in Li-ion  
 Type-C USB Charging  
 Feature:Zoom, Power display



## TL-8308

Material:Aluminium alloy  
Size:29\*29\*118mm  
Bulb:XPE+SMD  
Mode,XPE:high-low-strobe  
SMD:white-red-red strobe  
Battery:built in Li-ion  
Type-C USB charging  
Feature:Power display



## TL-8309

Material:Aluminum  
Size:36\*29\*139/158mm  
Bulb:Laser+SMD  
Mode,XPE:high-low-strobe  
SMD:white-red-red strobe  
Battery:built in Li-ion  
Type-C USB charging  
Feature:Zoom, Power display,  
Head glow in dark



## TL-8310-2

Material:ABS plastic  
Size:160\*42\*32mm  
Bulb:white laser  
3 Modes:high-low-strobe  
Battery:built in Li-ion  
Type-C USB charging  
Feature:Zoomable; Power Display



## TL-8329

Material:Plastic

Size:41\*29\*168/183mm

Bulb:laser+smd

10 Modes:laser white high-low-strobe-warm high-low-white+warm

long switch:smd white high-low-red-red and blue strobe

Batter:Built in 18650 1200mAh

Type-C USB charging, Zoom



## TL-8336

Material:Aluminum Alloy+Plastic

Size:50\*46\*173/193mm

Bulb:Laser+SMD

Mode:laser:high-low-strobe

SMD:white-warm-red-red strobe

Type-C USB rechargeable

Battery:Built in Li-ion

Feature:Zoom, Power Bank



## TL-8337

Material:Aluminum Alloy

Size:35\*32\*148/167mm

Bulb:XHP50+COB

3 Modes:XHP50 high-strobe-COB

Battery:1\*18650

Type-C USB charging

Feature:Zoomable; Magnet



## TL-8339-1

Material: Aluminum alloy  
 Size: 36\*33\*155/175mm  
 Bulb: Laser  
 Mode: high-low-strobe  
 Battery: 3\*AAA/1\*18650/1\*26650  
 Type-C USB charging  
 Feature: Zoom, Power display,  
 Head glow in dark



## TL-8342-2

Material: Aluminum  
 Size: 54\*44\*224/254mm  
 Bulb: Laser+SMD  
 Mode: high-mid-low-strobe-SOS  
 SMD: white-warm-white+warm  
 Battery: built in Li-ion  
 Type-C USB charging  
 Feature: Zoom, Power display,  
 Head glow in dark



## TL-8347

Material: ABS+PC  
 Size: 25\*25\*150mm  
 Bulb: P50+COB  
 Mode, P50: High-Low-Strobe  
 COB: White-Red Strobe  
 Battery: Built-in Li-ion  
 Type-C USB charging  
 Feature: Magnet; Clip; 90 Degree  
 Rotation Head



## TL-8339-1

Material: Aluminum alloy  
 Size: 50\*35\*185/205mm  
 Bulb: Laser+SMD  
 Modes: high-middle-low-strobe-sos  
 SMD warm high-low-red-red strobe  
 Battery: built in Li-ion  
 Type-C USB charging  
 Feature: Zoom, Clip, Power bank



## TL-8352

Material: Plastic  
 Size: 185\*82.5\*53mm  
 Bulb: 1\*LED+18\*SMD+12\*SMD  
 Mode: Front: High-Low-Strobe  
 Side: COB-SMD warm white-All Light  
 Tail: Red/Blue Flash  
 Battery: built-in Li-ion  
 USB-C+solar charging  
 Power bank, Power display,



## TL-9494

Material: Aluminum Alloy  
 Size: 20\*24\*157mm  
 Bulb: XPE+COB  
 2 Modes: XPE Spotlight-Side COB  
 Type-C USB charging  
 Magnet, Rotate clip







**TL-888**

Size:  
50\*30\*295mm  
Battery:3\*C



**TL-777**

Size:  
50\*30\*245mm  
Battery:2\*C



**TL-3803**

Size:  
48\*25\*280mm  
Battery:3\*SC



**TL-3854**

Size:  
48\*25\*230mm  
Battery:2\*SC



**TL-2022**

Size:  
31\*18\*196mm  
Battery:2\*14500



**TL-2021**

Size:  
31\*18\*146mm  
Battery:1\*14500

## TL-9668

Material:ABS

Size:90\*85\*230mm

Bulb:XPE+SMD

5 Modes,XPE:high-low-strobe,  
SMD:high-low

Battery:Built-in Li-ion

Type-C USB Charging

Feature:Hook; Power Display;  
Power Bank



## TL-9382-1

Material:ABS

Size:101\*154\*74mm

Bulb:4\*white lumen+4\*warm lumen+  
2\*cob+32\*white smd

Mode:1:warm lumen-cob  
2:white lumen-smd

Battery:built in Li-ion

USB+Solar charging, Power bank



## TL-9382-2

Material:ABS

Size:130\*199\*97mm

Bulb:9\*white lumen+9\*warm lumen+  
4\*cob+60\*white smd

Mode:1:warm lumen-cob  
2:white lumen-smd

Battery:built in Li-ion

USB+Solar charging, Power bank



## TL-9629

Material:ABS

Size:117\*183\*94mm

Bulb:1\*lumen+6\*cob+1\*white smd  
/1lumen+2\*warm tungsten+6\*cob

Mode:led-cob-lumen

/lumen-tungsten-cob

Battery:built in Li-ion

USB-C+Solar charging

Power Bank



## TL-9659

Material:ABS

Size:208\*136\*68mm

Bulb:1\*Lumen+8\*Cob+2\* Warm SMD  
/1\*lumen+1\*cob+4\*white tungsten

Mode:lumen-smd-cob

/lumen-tungsten-cob

Battery:built in Li-ion

USB-C+Solar charging

Power Bank



## TL-9660

Material:ABS

Size:154\*68\*202mm

Bulb:XPE+5\*COB/SMD

Mode:XPE:high-low

COB/SMD:white-red-red strobe

Battery:2\*18650(include)

Type-C USB+solar charging

Power bank

Ruler, knife, screwdrivers, tongs



## TL-9661

Material:ABS

Size:208\*128\*99mm

Bulb:T6+COB+red and blue smd

Mode:T6 high-low-cob high-low-

red&blue smd strobe

Battery:built-in Li-ion

Type-C USB charging

Power display, with tools



## TL-7121

Material:ABS plastic

Size:93\*47\*36MM

Bulb:2\*T6+4\*XPE+2\*COB

Mode:left switch:

COB high-low-red-red strobe

Right switch:T6-XPE-T6&XPE-strobe

Battery:2\*18650

Type-C USB charging

Tail warning light



## TL-7341

Material:Plastic  
 Size:110\*110\*30mm  
 Bulb:LED+SMD  
 Mode:LED High-Low  
 SMD White-Red-Red Strobe  
 Battery:built-in Li-ion  
 Type-C rechargeable  
 Sensor Function



## TL-7349

Material:Plastic  
 Size:39\*66\*42mm  
 Bulb:XPE+SMD  
 5 Modes: XPE-SMD;  
 XPE+SMD white-Red-Red&Blue Flash  
 Battery: Built-in Li-ion  
 Type-C USB charging  
 Magnet, Cap retainer, Collar clip  
 Sensor Function



## TL-7367

Material:Aluminium alloy  
 Size:115\*110\*100mm  
 Bulb:5\*LED  
 Mode:high-low-strobe  
 Battery:2\*18650  
 Zoom,digital Power display,  
 Type-C USB charging  
 Power bank



## TL-7381

Material:Plastic  
 Size: 81\*81\*86mm  
 Color:Gold/silver  
 Bulb:XPE  
 Mode:high-low-strobe-sos  
 Battery:built in Li-ion  
 Power bank,Power display  
 Type-C USB charging



## TL-7384-1

Material:aluminum alloy  
 Size:39\*39\*73mm  
 Bulb:Laser+COB  
 Mode:laser:high-low-strobe  
       cob:high-low-red-red strobe  
 Battery:3\*18650  
 Zoom,Power bank,Power display  
 Type-C USB charging



## TL-7384-2

Material:Aluminum alloy  
 Size:42\*42\*37mm  
 Bulb:Laser+SMD+COB  
 Mode:main:laser high-low-strobe-  
       smd cob:high-low-red-redstrobe  
 Battery:3\*18650  
 Zoom,Power bank,Power display  
 Type-C USB charging







TYPE-C USB Headlight

Switch



TL-7363-1



TL-7363-2



TL-7363-3



TL-7363-4

Switch+Sensor



TL-7363-5



TL-7363-6



TL-7363-7

## TL-9624

Material:PC+ABS

Size:90\*90\*50mm

Bulb:8m LED Light Strip+30SMD

Mode:strip on-flash-breathing flash

-strip+30LED on-30LED on/off

Battery:Built-in Li-ion

Type-C USB charging



## TL-9624S

Material: ABS+PC

Size:11.5\*11.5\*3.5mm

Bulb:36\* SMD+10m light strip

5 Modes:strip warm-RGB-

warm&RGB flash, lamp warm high-low

Battery:Built-in Li-ion

Type-C USB+solar charging



## TL-9624M

Material:ABS+PC

Size:110\*110\*30mm

Strip:8 meters

Bulb:XPE+SMD LEDs

5 Modes:strip warm-warm+RGB breath

flash-RGB breath flash, strip+ lamp

warm-lamp warm

Battery:Built-in li-ion

Type-C USB charging, 3\*magnet





## TL-9665

Material:ABS+PC+silicone

Size:107\*107\*118mm

Bulb:Warm+white+10m warm&RGB string

Mode:smd:white-warm-flame

srting:high-flash-breathing flash-high

Battery:built in Li-ion

digital power display,power bank,

dual switch,10M string light

Type-C USB charging



## TL-9684

Material:ABS

Size:101\*101\*166mm

Bulb:3\*tungsten+10m string+16\*smd

Mode:Induction mode-low light-

strong light-color light-color light

flash-warm light+color light-warm

light+color light flash

Battery:built in Li-ion

Type-C USB+Solar charging



## TL-9321

Material: ABS  
 Size: 137\*107\*107mm  
 Bulb: 3\*COB  
 Mode: on/off  
 Battery: 3\*AAA  
 Hook



## TL-9224R

Material: ABS  
 Size: 200\*82\*82mm  
 Bulb: 2\*tungsten+28\*SMD+UV  
 Mode: Warm light+white light+  
 mosquito control  
 Battery: built in Li-ion  
 Type-C USB+Solar charging



## TL-3282

Material: ABS  
 Size: 152\*120\*120mm  
 Bulb: tungsten+16\*SMD  
 Mode: 1 sensor on/off(high mode)  
 2, sensor on/off(low-high)  
 3, no sensor low mode  
 4, no sensor high mode  
 Battery: built-in Li-ion  
 Type-C USB+Solar charging





TL-CAP-1



TL-CAP-3



Switch



Switch+Sensor

## TL-3233

Material:ABS

Size:solar panel 148\*84mm

Bulb:234\*SMD

Mode:1.Sensor ON-OFF

2.Sensor Dim light

3.Low light

Battery:built in Li-ion

Solar charging, Remote control



## TL-3283

Material:ABS

Size:185\*97\*101mm

Bulb:58\*SMD

Mode:1,sensor on/off(low-high)

2,sensor on/off(high mode)

3,no sensor low mode

Battery:built in Li-ion

Solar+Type-C charging, Clip



## TL-9127

Material: ABS

Size:95\*123\*47mm

Bulb:20\*SMD

Mode:1.Sensor ON-OFF

2.Sensor Dim light

3.Low light

Battery:built in Li-ion

Solar charging





### TL-3270-1

Material:ABS+PP plastic  
 Size:110\*65\*155mm  
 Bulb:LED+1\*365nm+2\*395nm  
 2 Light Modes:ON-AUTO low-high  
 1 UV Light Mode:Mosquito control  
 Type-C USB Input:5V - 1A  
 Solar panel:5.5V, 86\*33mm



### TL-3270-2

Material:ABS+PP plastic  
 Device Size:110\*55\*140mm  
 Stick Size:24\*245mm  
 Bulb LED+1\*365nm+2\*395nm  
 1 Red Light:AUTO ON-OFF  
 1 UV Light:Mosquito control  
 Sonar:3V 400Hz. Sound 3s per 16s  
 Type-C USB Input:5V - 1A  
 Sonar Repellent range:12m for mouse







**TL-3269-1**

Material:ABS+PP plastic

Device Size:60\*60\*26mm

Stick Size:24\*245mm

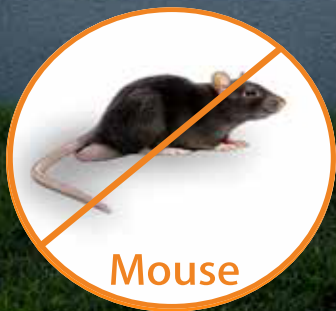
Battery:Built-in 300mAh

Sonar:3V 400Hz. Sound 3s per 16s

Sonar Repellent range:12m for mouse

Solar charging





Mouse



Snake

**TL-3269-2**

Material:ABS+PP plastic

Device Size:60\*60\*26mm

Stick Size:24\*245mm

Mode:on/off

Sonar:3V 400Hz. Sound 3s per 16s

Sonar Repellent range:12m for mouse, cat, snake, bat...

Battery:built in 300 mAh

Solar charging



*Quickly Relieve Muscle Soreness  
and Wake Up the Body's Vitality.*



*Muscles after exercise*  
(Lactic acid accumulation)



*After using massage gun*  
(Lactic acid decomposition)

**TL-MG1**

Material: Aluminium+PC

Size: 147\*150mm

Mode: 6 levels

Speed: 1600-3200 rpm

Battery: Built-in Li-ion

USB-C rechargeable

With 4 replacement massage heads



**TL-MG6**



**TL-MG7**

