



# Sword Lite Subsea Light

**Model: : SWT-LSL**



Customer Serviceable  
Subsea LED Light

The Chimaera Series delivers a compact, high-output LED light with a brightness of up to 10,000 lumens, capable of reaching depths of up to 11,000 meters. It offers customizable color temperatures, lens angles, and smooth dimming from 0 to 100%. Designed for ROVs, divers, and inspection applications, this light is also available for customized orders.

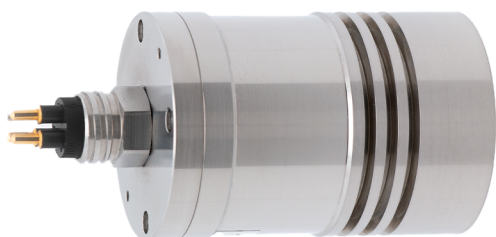
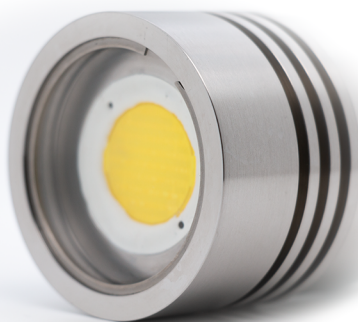
- **1,000 Lumens Output**
- **11000msw Depth Rating**
- **24V DC Lamp**

For further information, Email:  
[info@seawardtech.com](mailto:info@seawardtech.com)

**SEAWARD**  
TECHNOLOGY

# Sword Lite Subsea Light

| Electrical  | 500msw   | 3000msw        | 6000msw  | 10000msw                       | Customize   |
|---|--|----------------|--|--------------------------------|---|
| Lighting  | General Purpose LED lamp   |                |  |                                |   |
| Total Luminous Output   | 10,000 lumens, adjustable brightness.  |                |  |                                |   |
| Beam Angle  | 120° in water (half power points) 120° in air (half power points)              |                |  |                                | Customizable☑   |
| Color   | Day Light White 5000 K ~ 6500 K, Warm White 2600 K ~ 3700 K, Contact Sales for |                |  |                                | Customizable☑   |
| Color Rendering Index   | Day Light White≥ 70, Warm White ≥ 80   |                |  |                                | Customizable☑   |
| LED Life  | >50,000 hours if adequately cooled   |                |  |                                |   |
| Power Input   | 24VDC (18~32V) , 100W  |                |  |                                |   |
| Dimming   | RS232, RS485, 0-5VDC, 0-10VDC  |                |  |                                |   |
| Mechanical  |  |                |  |                                |   |
| Dimensions  | Diameter: 60mm Length:   |                | Diameter: 74mm Length: 111mm (excl. connector) |                                |   |
| Window  | Sapphire   |                |  |                                | Customizable☑   |
| Weight  | Stainless Steel  |                |  |                                | Customizable☑   |
|   | In Air: 0.91Kg   | In Air: 0.91Kg | In Air: 1.4Kg. In water: 0.8Kg                 | In Air: 1.4Kg. In water: 0.8Kg | Customizable☑   |
| Housing Material  | 316L Stainless Steel/Aluminium alloy/Titanium alloy                            |                |  |                                | Titanium alloy☑<br>Aluminium alloy☑<br>Stainless steel☑ |
| Connector   | Subconn MCBH4MTI Connector (Dimming) or Mini 3-Pin Male (H-MCBH3M)             |                |  |                                | Customizable☑   |
| Connector Position  | Mounted on rear of housing   |                |  |                                | Customizable☑   |
| Environmental   |  |                |  |                                |   |
| Operating Depth   | 500msw   | 3000msw        | 6000msw  | 10000msw (Titanium)            | Titanium alloy☑<br>Aluminium alloy☑<br>Stainless steel☑ |
| Temperature   | Operating: -10°C to 40°C (In Water) Storage: -20°C to 60°C                     |                |  |                                |   |
| Electro-Magnetic Compatibility                                | BS EN 61000-6-3 2007 Emission and BS EN 61000-6-1 2007 Immunity                |                |  |                                |   |
| *Dimensions and weight will vary with the choice of material. |  |                |  |                                |   |



| 500 Lighting socket definition   |                        |                               |
|----------------------------------|------------------------|-------------------------------|
| PIN                              | Definition/ Wire Color | NOTE                          |
| 1                                | 24VDC+/BLACK           | 18~32VDC, positive power      |
| 2                                | GND/WHITE              | Negative power                |
| 3                                | NC                     | Spare                         |
| 3000 Lighting socket definition  |                        |                               |
| PIN                              | Definition/ Wire Color | NOTE                          |
| 1                                | 24VDC+/-               | 18~32VDC, Pmin≥100W           |
| 2                                | GND                    |                               |
| 3                                | DIM                    | 0-5VDC, adjustable brightness |
| 6000 Lighting socket definition  |                        |                               |
| PIN                              | Definition/ Wire Color | NOTE                          |
| 1                                | 24VDC+/-               | 18~32VDC, Pmin≥100W           |
| 2                                | GND                    |                               |
| 3                                | NC                     | Spare, adjustable brightness  |
| 11000 Lighting socket definition |                        |                               |
| PIN                              | Definition/ Wire Color | NOTE                          |
| 1                                | 24VDC/                 | 16~30VDC, Pmax≤120W           |
| 2                                | GND                    |                               |
| 3                                | DIM                    | 0-5VDC & PWM                  |

