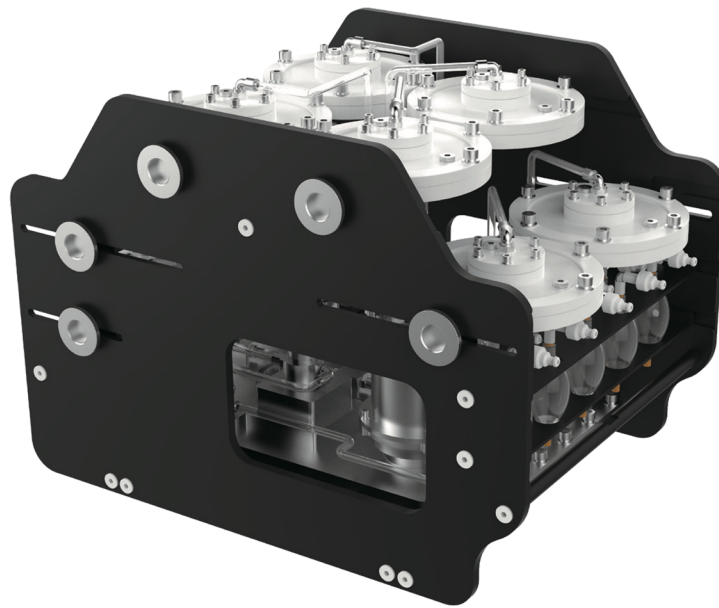


# IM10 Series Microbial Sampler

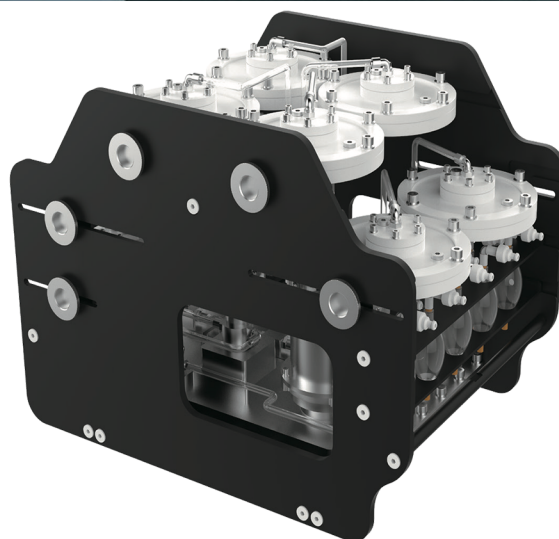


## Ten-Channel Microbial Sampler

The IM10 series is a compact, lightweight, and high-performance microbial sampler designed for large-volume seawater filtration and in-situ sample fixation. Equipped with ten channels, it enables multi-point sampling in a single dive. Operable via preset programs or manual control, it ensures high-quality microbial and larval enrichment on filter membranes. Suitable for deployment on ROVs, HOVs, AUVs, and landers, it supports full-ocean-depth sampling with internal pressure control to protect filter integrity.

## Advantages

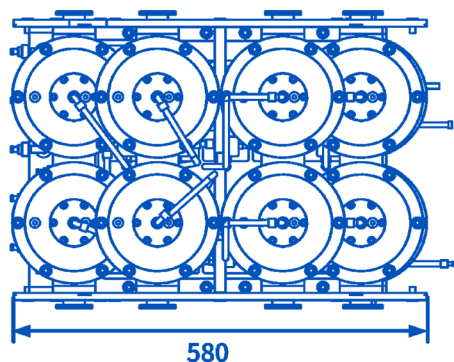
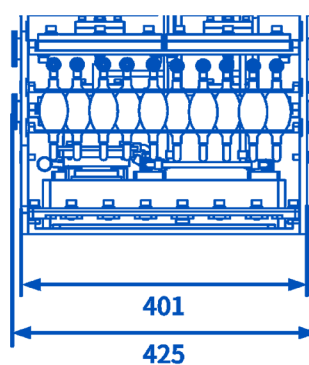
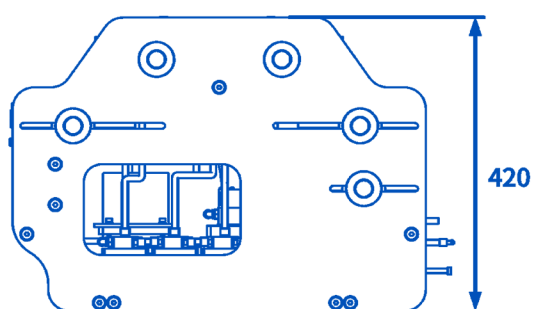
- Multi-point Sampling
- Flexible Operation
- High Sample Quality
- Full-Ocean-Depth Capability
- Efficient Filtration
- Compact and Lightweight



## Specification

Specification	Details
Working Depth	3000m (customizable)
Filtration Rate	$\geq 2\text{L/min}$
47mm Filter Holder Membrane Specification	47mm, pore size $\geq 3\mu\text{m}$
142mm Filter Holder Membrane Specification	142mm, pore size $\geq 0.22\mu\text{m}$
Communication Port	RS485
Connector Type	4-core (customizable)
Dimensions	Length 580mm $\times$ Width 425mm $\times$ Height 420mm
Weight	37.5kg (in air), 23.5kg (in water)
Power Consumption	$< 104\text{W}$
Input Voltage	24-48V

## Product Dimensions



unit: mm