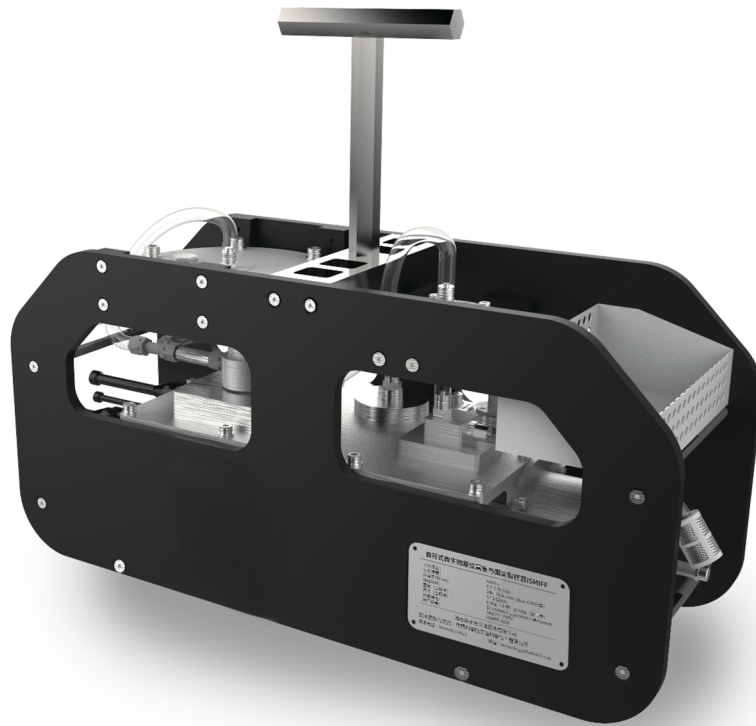


# Self-contained Microbiological in Situ Enrichment & Fixed Sample



## ISMIFF

The Microbial In Situ Sampling and Incubation Filtration Fixation (ISMIFF) device is an automated sampling system developed to address the challenges of difficult, inefficient, and poor-quality microbial sampling in deep-sea waters. It enables large-volume seawater filtration and in situ fixation.

1. High-quality samples through in situ microbial fixation.
2. Depth-independent with self-compensation.
3. Internal pressure control.
4. Filters up to hundreds of liters of seawater.
5. Compact, lightweight, stable, and easy to operate.
6. 6000/10000 Meters

For further information, Email:  
[info@seawardtech.com](mailto:info@seawardtech.com)

**SEAWARD**  
TECHNOLOGY

## Specification

<b>Working Depth</b>	6000m (standard, optional up to 11000m)
<b>Filtration Rate</b>	0.2-1.5L/min
<b>Continuous Working Time</b>	24h (0.5L/min at 2bar internal power supply)
<b>Filter Specification</b>	47-142mm
<b>Weight (including handle)</b>	8.8kg (in freshwater), 18.8kg (in air)
<b>Product Dimensions (including handle)</b>	Length 550mm × Width 200mm × Height 450mm
<b>External Power Supply</b>	2A@23~29VDC

## Product Dimensions

