

# SEAWARD SURVEYOR 1500M

Model: SWT-USV-1500M



Seaward Surveyor 1500M is a compact carbon-fiber survey USV integrating singlebeam bathymetry, autonomous navigation, and multi-sensor expansion for underwater topographic survey, hydrological survey in small to medium-sized waters.

**Endurance**  
4 hours @ 2 m/s

**Payload Capacity**  
30 kg

**Maximum Speed**  
5 m/s

- Applications**
- \* Hydrographic Survey
  - \* Underwater Topographic Mapping
  - \* Underwater Structure Survey
  - \* Dock Wall Survey
  - \* Bridge Scour Monitoring

- Key Features**
- \* Multi-purpose USV platform
  - \* Monohull anti-roll design
  - \* Large moon pool cabin
  - \* 50 kg payload capacity
  - \* 6-hour endurance at 2 m/s

For more information  
[info@seawardtech.com](mailto:info@seawardtech.com)

**SeawardTech Marine Limited**

# SEAWARD SURVEYOR 1500M



## Remote Control Range

Up to 2.5 km point-to-point

## Hull Size

1500 x 775 x 510 mm

## RTK Positioning Accuracy

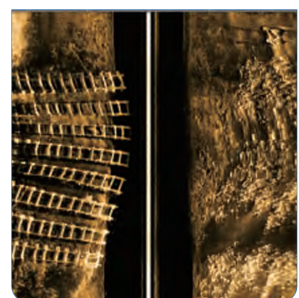
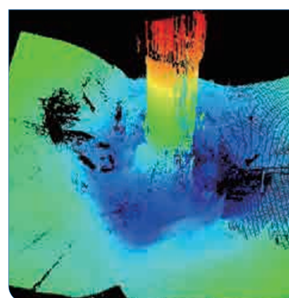
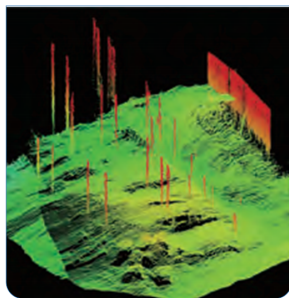
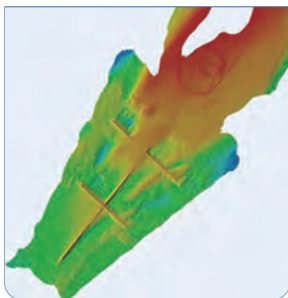
Hori.  $\pm 8$  mm + 1 ppm /  
Alt.  $\pm 15$  mm + 1 ppm

## Echosounder Depth Range

0.1–300 m

## Sensor Expansion Capability

The platform is standard equipped with a singlebeam echosounder and supports the expansion of multi-beam echosounders, side scan sonars, ADCPs, water quality analyzers, and other sensors. The internal moon pool open cabin enables fast and convenient installation for multi-mission survey applications.



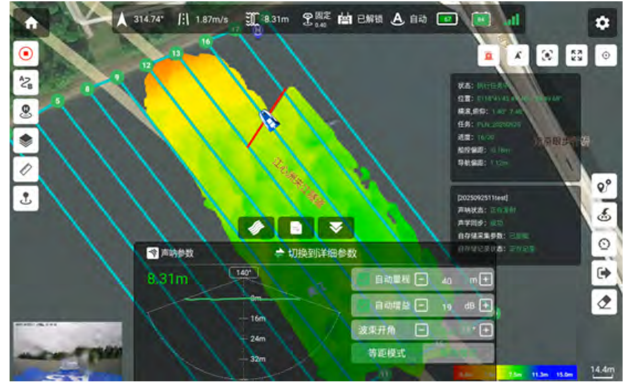
 For more information  
[info@seawardtech.com](mailto:info@seawardtech.com)

**SeawardTech Marine Limited**

# SEAWARD SURVEYOR 1500M

## HxSurvey Master Android Software

Integrated Android-based software for USV control, navigation, singlebeam sounding, route planning, real-time video display, and GNSS/depth data recording, supporting DXF and KML import for efficient hydrographic survey operations.



System	Item	Parameter
Ship	Size	1500 mm × 775 mm × 510 mm (L × W × H)
	Hull weight / Load	15 kg / 50 kg
	Hull materials	Carbon fiber and Kevlar bulletproof cloth high-strength composite material integrated die-casting molding
	Ship design	Monohull anti-roll design, low center of gravity, low resistance, stable navigation
	Navigation light	Two-tone navigation light, capable of displaying the status of solution and connection with the remote control
Power	Cruise	6 hours @ 2 m/s (optional with additional battery packs)
	Maximum speed	5 m/s
	Thruster	1500 W/u, ducted thruster, easy to disassemble and replace
	Battery	12S, 40AH lithium battery (2 batteries per group)
Safety	Obstacle avoidance	Millimeter wave radar with a detection range of 40 m
	360° Camera	Automatic switching between daytime and night vision functions, supporting manual image capture
	IP rating	IP68, the hull is equipped with thickened anti-collision strips and a double-layer hull anti-sinking design
Comm.&Control	4G Comm.	Unrestricted distance, real-time transmission of sounding, positioning, and image data
	Operating mode	One-click switch between manual and automatic cruise modes
Controller	Home	Low battery, automatic home upon loss of contact, single-point or multipoint home along designated routes, etc.
	Remote control dist.	Point-to-point 2.5 km max.
	Screen	Android 13 system, screen size 7" (optional 10")
High precision positioning device	RTK GNSS	4-constellation satellite positioning system, 1408 channels (optional single Beidou system) Heading: 0.1° (1 m baseline) RTK (RMS): Hori. ±8 mm + 1 ppm, Alt. ±15 mm + 1 ppm PPP (RMS): Hori. 5 cm, Alt. 10 cm
		SBE
Echosounder	HxSurvey Master Android Software	1. One-click connection to all sensors; 2. Set parameters related to ship control and echosounder; 3. Display analog and digital water depth, real-time ship speed, latitude and longitude (Cartesian) coordinates, GNSS status, current ship position, etc.; 4. Import DXF and KML files as maps or navigation plan lines, which can be manually drawn and have functions such as parallel and area lining; 5. Real-time display of camera video; 6. Record GNSS data and depth data for easy post-processing