

Features:

- n Isolated mounting base 2500V~
- n Solder joint technology with increased power cycling capability
- n Space and weight saving

Typical Applications

- n Inverter
- n Inductive heating
- n Chopper

V _{RSM}	V _{RRM}	Type & Outline
900V	800V	MDS200-08-411H5
1100V	1000V	MDS200-10-411H5
1300V	1200V	MDS200-12-411H5
1500V	1400V	MDS200-14-411H5
1700V	1600V	MDS200-16-411H5
1900V	1800V	MDS200-18-411H5

SYMBOL	CHARACTERISTIC	TEST CONDITIONS	T _j (°C)	VALUE			UNIT
				Min	Type	Max	
I _O	DC output current	Three-phase full wave rectifying circuit, T _C =100°C	150			200	A
I _{RRM}	Repetitive peak current	at V _{RRM}	150			12	mA
I _{FSM}	Surge forward current	10ms half sine wave V _R =0	150			1.5	kA
I ² t	I ² t for fusing coordination					11.25	A ² s*10 ³
V _{FO}	Threshold voltage		150			0.75	V
r _F	Forward slope resistance					2.0	mW
V _{FM}	Peak forward voltage	I _{FM} =200A	25			1.50	V
R _{th(j-c)}	Thermal resistance Junction to case	Single side cooled, per total				0.10	°C /W
R _{th(c-h)}	Thermal resistance case to heatsink	Single side cooled, per total				0.07	°C /W
V _{iso}	Isolation voltage	50Hz,R.M.S,t=1min,I _{iso} :1mA(max)		2500			V
F _m	Terminal connection torque(M6)			4.5		6.0	N·m
	Mounting torque(M5)			2.5		4.0	N·m
T _{vj}	Junction temperature			-40		150	°C
T _{stg}	Stored temperature			-40		125	°C
W _t	Weight				330		g
Outline	411H5						

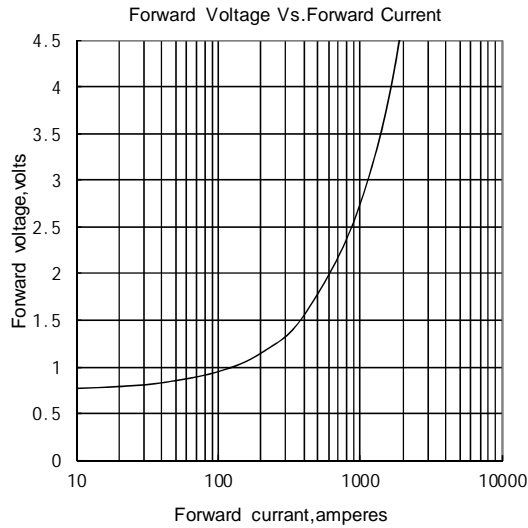


Fig.1

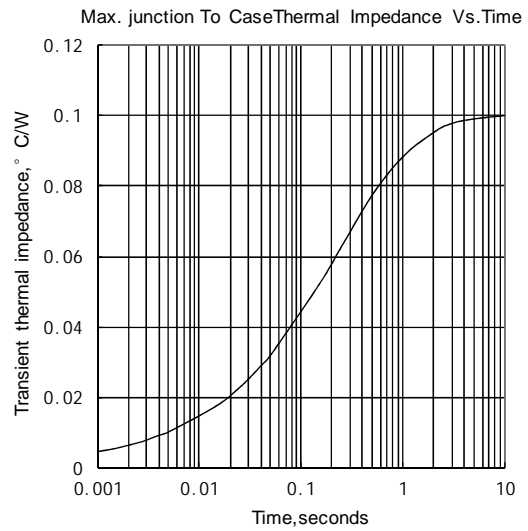


Fig.2

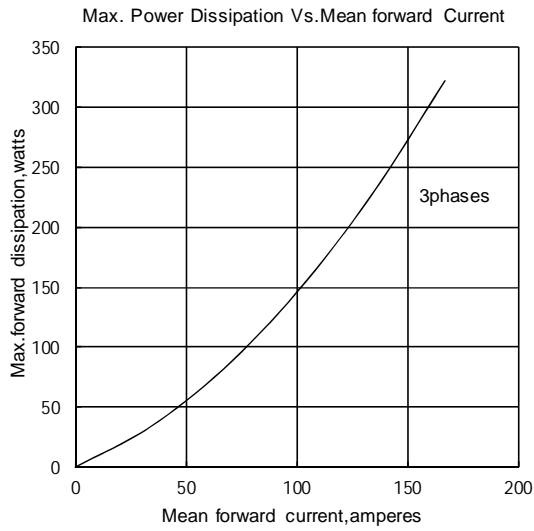


Fig.3

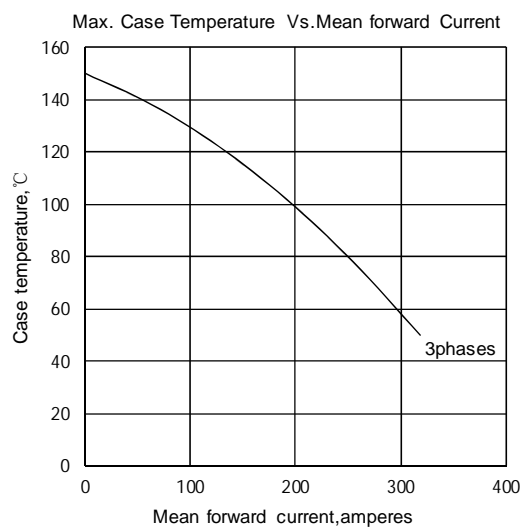


Fig.4

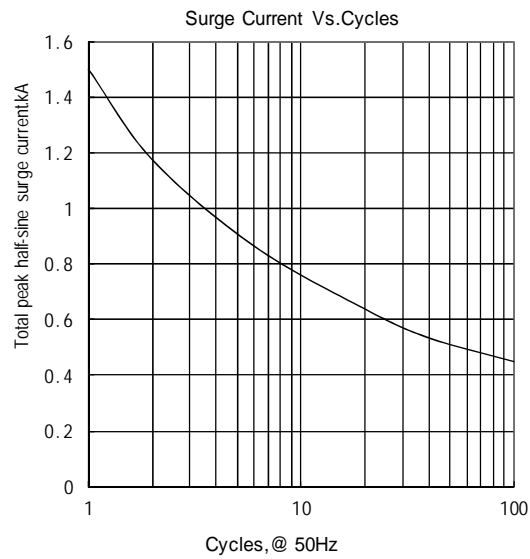


Fig.5

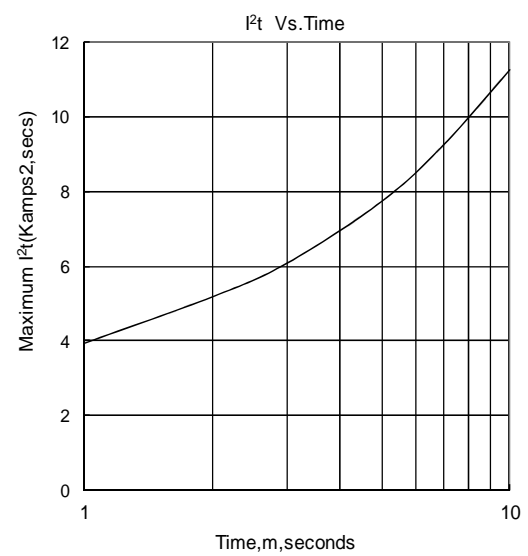
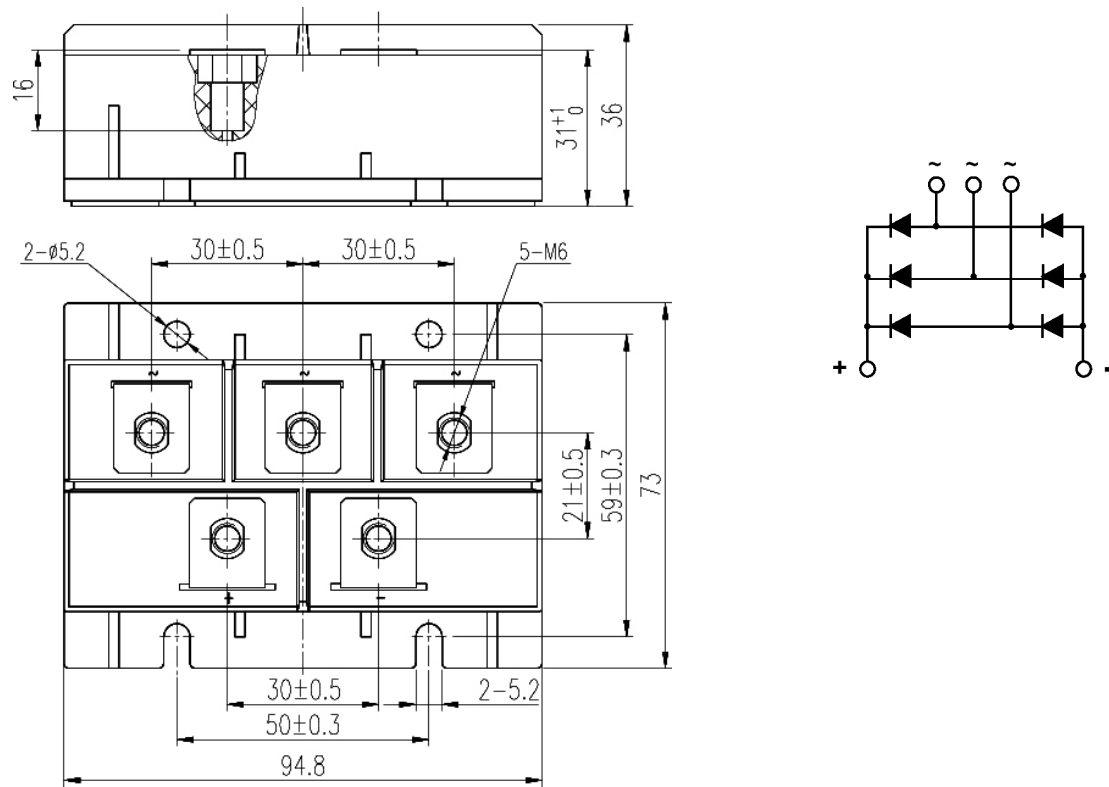


Fig.6

Outline:



Unmarked dimensional tolerance: \pm 0.5mm

TECHSEM reserves the right to change specifications without notice.