

Features

- n Low forward voltage drop
- n High reverse voltage
- n Hermetic metal cases with ceramic insulators

Typical Applications

- n All purpose high power rectifier diodes
- n High power resistance welding equipment
- n Non-controllable and half-controllable rectifiers
- n Controlled rectifiers

Part No. T65ZPR-ZT60c(d)T

I_{F(AV)}	970A
V_{RRM}	5600V 6000V 6500V

SYMBOL	CHARACTERISTIC	TEST CONDITIONS		T _j (°C)	VALUE			UNIT
					Min	Type	Max	
I _{F(AV)}	Mean forward current	180° half sine wave 50Hz Double side cooled,	T _C =100°C	150			1510	A
V _{RRM}	Repetitive peak reverse voltage	tp=10ms		150	5600		6500	V
I _{RRM}	Repetitive peak current	At V _{RRM}		150			150	mA
I _{FSM}	Surge forward current	10ms half sine wave		150			26	kA
I ² t	I ² t for fusing coordination	V _R =0.6V _{RRM}					3380	A ² s*10 ³
V _{FO}	Threshold voltage			150			0.92	V
r _F	Forward slope resistance						0.39	mΩ
V _{FM}	Peak forward voltage	I _{FM} =3000A, F=34kN		25			1.85	V
Q _{rr}	Recovery charge	I _{FM} =1000A, tp=4000μs, di/dt=-20A/μs, V _R =100V		150		5000		μC
R _{th(j-c)}	Thermal resistance Junction to case	At 180° sine double side cooled Clamping force 34kN					0.014	°C /W
R _{th(c-h)}	Thermal resistance case to heatsink						0.0035	
F _m	Mounting force				27		34	kN
T _{vj}	Junction temperature				-40		150	°C
T _{stg}	Stored temperature				-40		160	°C
W _t	Weight					820/ 1100		g
Outline	ZT60cT / ZT60dT							

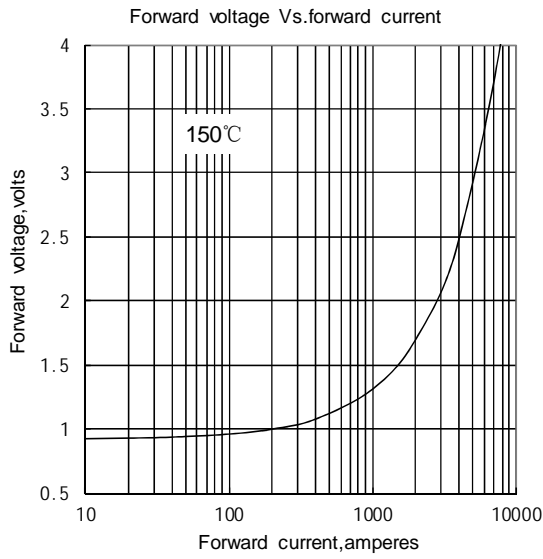


Fig.1

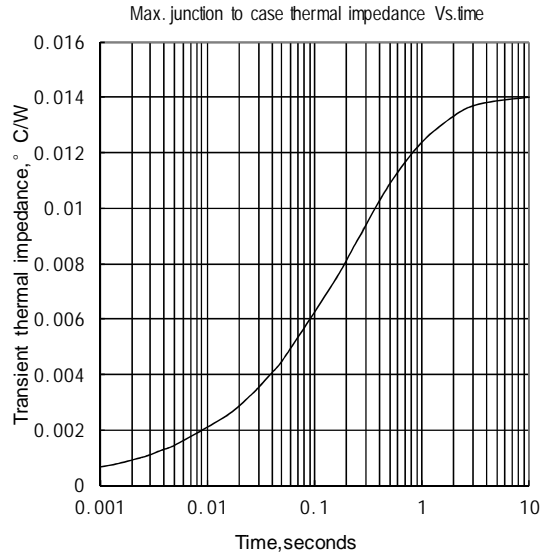


Fig.2

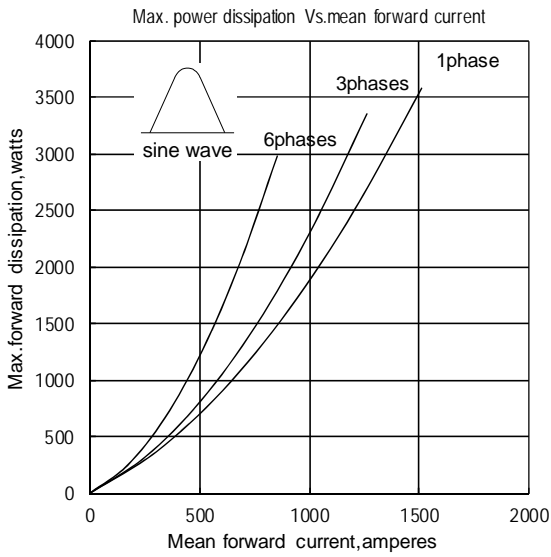


Fig.3

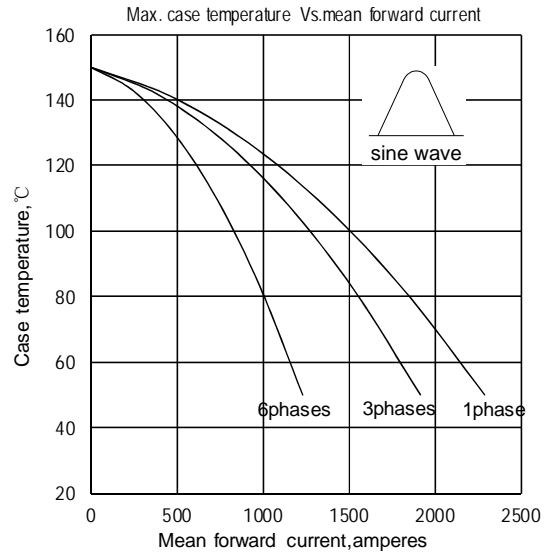


Fig.4

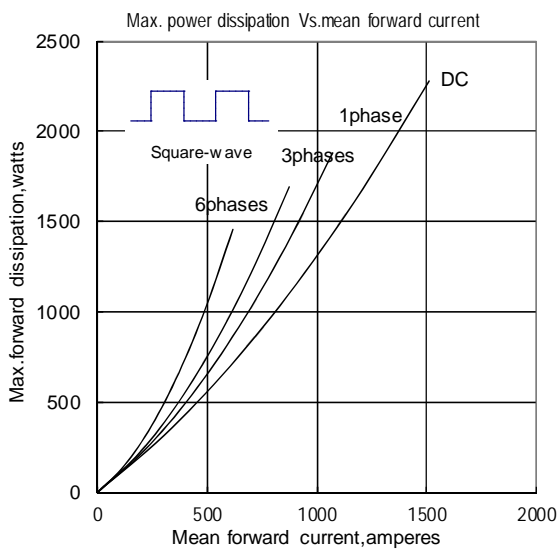


Fig.5

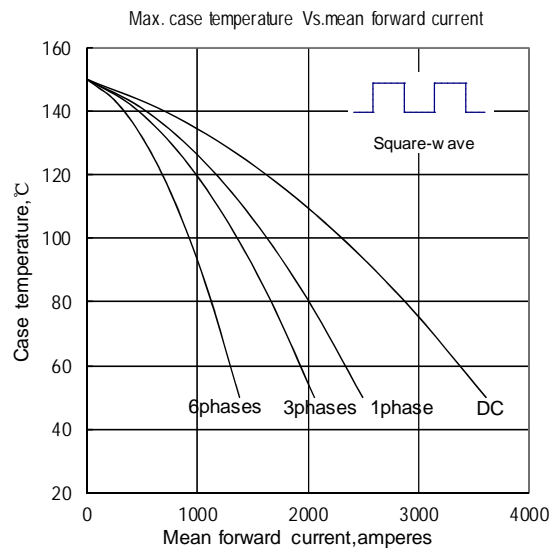


Fig.6

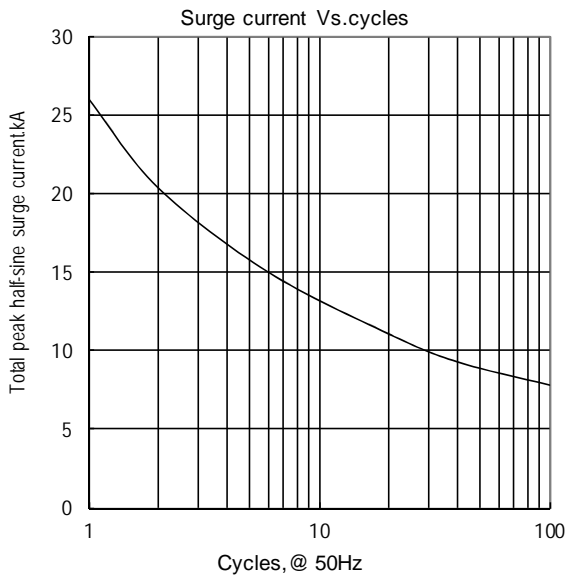


Fig.7

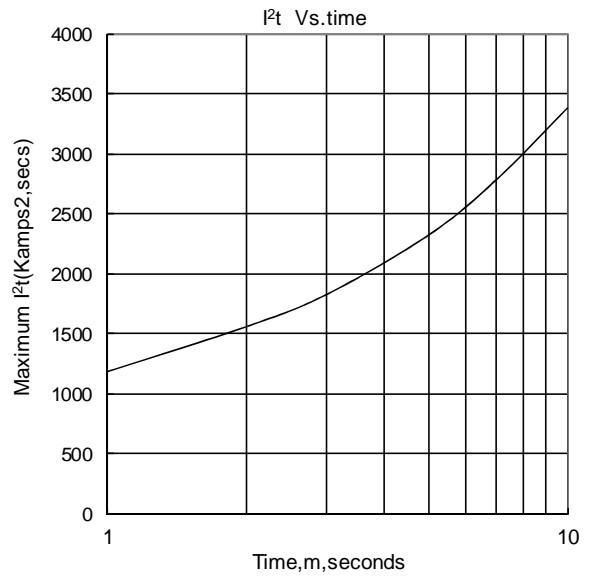
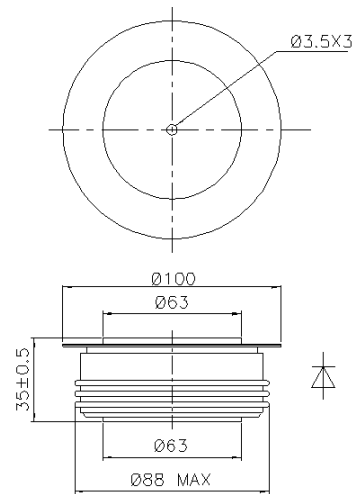
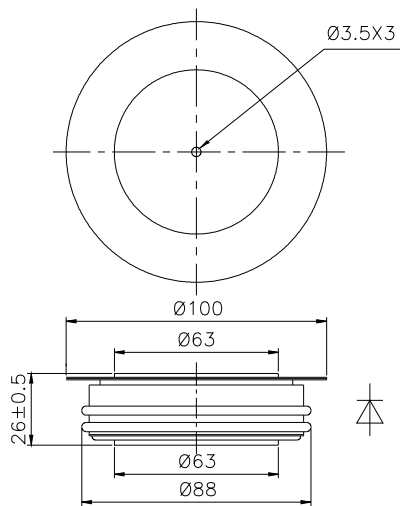


Fig.8

Outline:



TECHSEM reserves the right to change specifications without notice.