



**Features:**

- Interdigitated amplifying gates
- Fast turn-on and high di/dt
- Low switching losses
- Short turn-off time
- Hermetic metal cases with ceramic insulators

**Typical Applications**

- Inductive heating
- Electronic welders
- Self-commutated inverters
- AC motor speed control

<b>Part No. Y40KKD-KT39cT</b>		
<b>I<sub>T(AV)</sub></b>	<b>900A</b>	
<b>V<sub>DRM</sub>, V<sub>RRM</sub></b>	<b>1200V</b>	<b>1400V</b>
	<b>1600V</b>	
<b>t<sub>q</sub></b>	<b>18~36μs</b>	

SYMBOL	CHARACTERISTIC	TEST CONDITIONS		T <sub>j</sub> (°C)	VALUE			UNIT
					Min	Type	Max	
I <sub>T(AV)</sub>	Mean on-state current	180° half sine wave 50Hz Double side cooled,	T <sub>C</sub> =55°C	125			900	A
V <sub>DRM</sub> V <sub>RRM</sub>	Repetitive peak off-state voltage Repetitive peak reverse voltage	tp=10ms		125	1200		1600	V
I <sub>DRM</sub> I <sub>RRM</sub>	Repetitive peak off-state current Repetitive peak reverse current	at V <sub>DRM</sub> at V <sub>RRM</sub>		125			50	mA
I <sub>TSM</sub>	Surge on-state current	10ms half sine wave		125			10	kA
I <sup>2</sup> t	I <sup>2</sup> t for fusing coordination	V <sub>R</sub> =0.6V <sub>RRM</sub>					500	A <sup>2</sup> s*10 <sup>3</sup>
V <sub>TO</sub>	Threshold voltage			125			1.70	V
r <sub>T</sub>	On-state slope resistance						0.48	mΩ
V <sub>TM</sub>	Peak on-state voltage	I <sub>TM</sub> =1500A, F=18kN		25			3.15	V
dv/dt	Critical rate of rise of off-state voltage	V <sub>DM</sub> =0.67V <sub>DRM</sub>		125			1000	V/μs
di/dt	Critical rate of rise of on-state current	V <sub>DM</sub> = 67%V <sub>DRM</sub> to1600A Gate pulse t <sub>r</sub> ≤0.5μs I <sub>GM</sub> =1.5A		125			1500	A/μs
Q <sub>rr</sub>	Recovery charge	I <sub>TM</sub> =1000A, tp=4000μs, di/dt=-20A/μs, V <sub>R</sub> =100V		125		33	50	μC
t <sub>q</sub>	Circuit commutated turn-off time	I <sub>TM</sub> =1000A, tp=4000μs, V <sub>R</sub> =100V dv/dt=30V/μs, di/dt=-20A/μs		125	18		36	μs
I <sub>GT</sub>	Gate trigger current	V <sub>A</sub> =12V, I <sub>A</sub> =1A		25	30		250	mA
V <sub>GT</sub>	Gate trigger voltage				0.8		3.0	V
I <sub>H</sub>	Holding current				20		400	mA
I <sub>L</sub>	Latching current						500	mA
V <sub>GD</sub>	Non-trigger gate voltage	V <sub>DM</sub> =67%V <sub>DRM</sub>		125			0.3	V
R <sub>th(j-c)</sub>	Thermal resistance Junction to case	At 180° sine double side cooled Clamping force 18kN					0.028	°C /W
R <sub>th(c-h)</sub>	Thermal resistance case to heat sink						0.0075	
F <sub>m</sub>	Mounting force				15		20	kN
T <sub>vj</sub>	Junction temperature				-40		125	°C
T <sub>stg</sub>	Stored temperature				-40		140	°C
W <sub>i</sub>	Weight					320		g
Outline	KT39cT40							

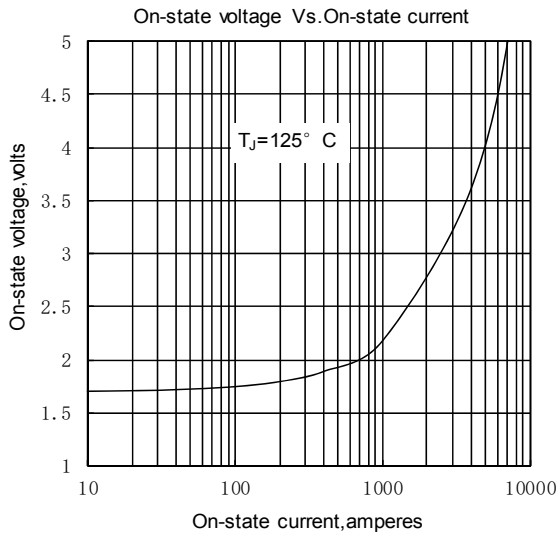


Fig. 1

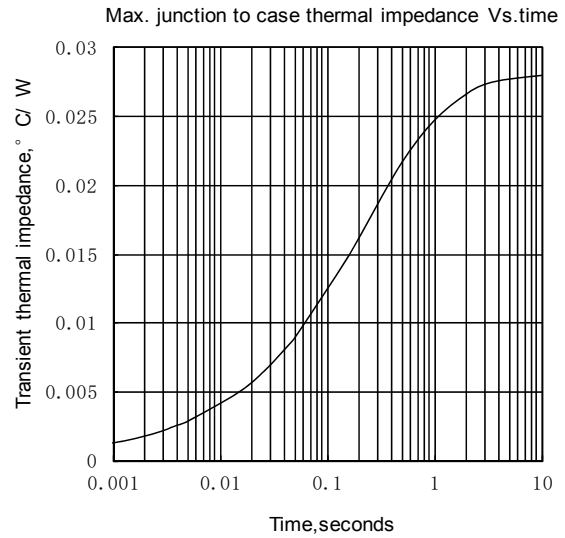


Fig. 2

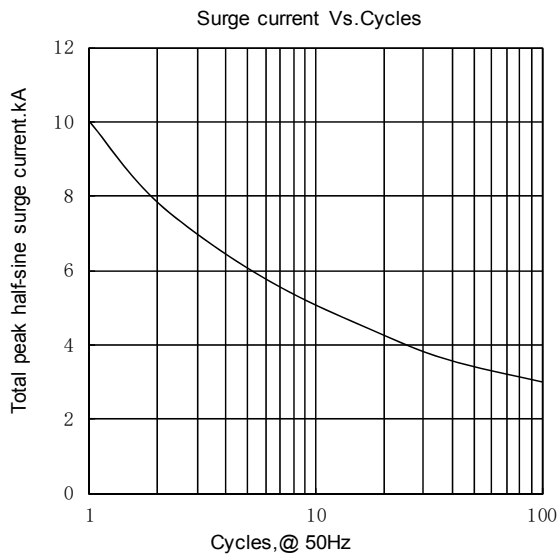


Fig. 3

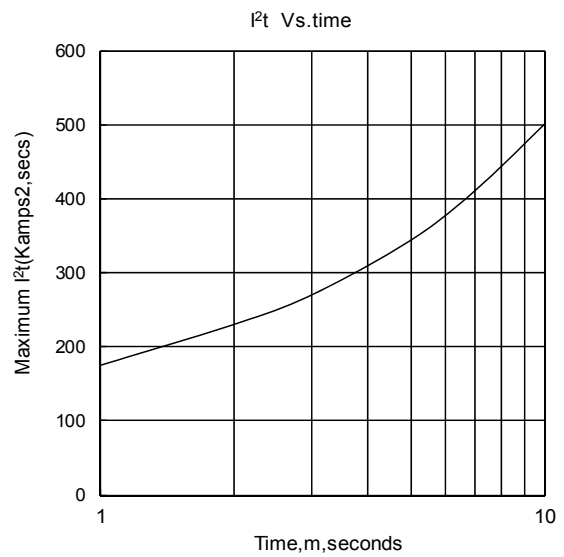


Fig. 4

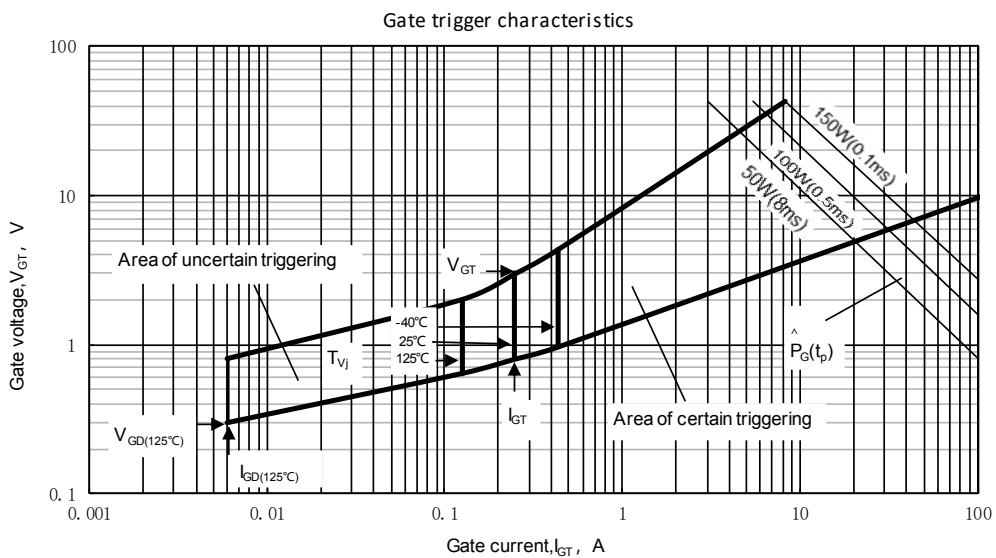
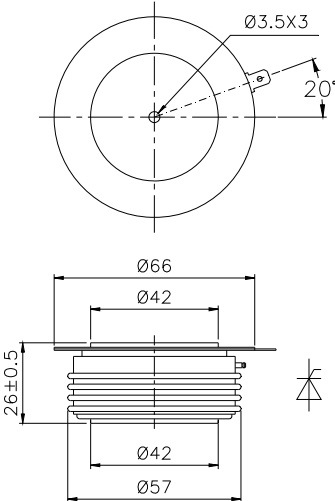


Fig.5

Outline:



TECHSEM reserves the right to change specifications without notice.