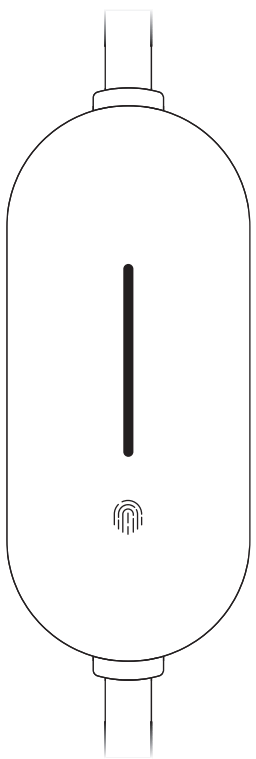


EV CHARGER



Quick Reference Guide

CONTENTS

► Safety Precautions	01
► Product Overview	02
► Installation instructions	03
► Introduction to use & Precautions	04
► Specifications & Packing List	05
► Storage & Safety Features	06
► How to use App	07

IMPORTANT SAFETY INSTRUCTIONS SAVE THESE INSTRUCTIONS

⚠ WARNING!

► When using electric products, basic precautions should always be followed, including the following. This manual contains important instructions for model Go-A22 that must be followed during installation, operation and maintenance of the unit.

SAVE THESE INSTRUCTIONS

► This manual contains important safety and operating instructions

1. Read all the instructions before using this product.
2. This device should be supervised when used around children.
3. Do not put fingers into the electric vehicle connector.
4. Do not use this product if the flexible power cord or EV cable is frayed, has broken insulation, or any other signs of damage.

SAFETY PRECAUTIONS

Thank you for your purchase. It is recommended to read this manual before use.

⚠ CAUTION!

This symbol indicates what the user should pay attention to. Improper operations can lead to user security issues or a degree of hardware damage.

⚠ WARNING!

This symbol indicates what the user should pay attention to. The parts inside the product are at risk of shock to persons.

⚠ CAUTION!

- Do not immerse the AC charging connection device in water
- It is forbidden to step on the charging cable, pull the cable, bend or knot the cable
- Do not drop the control box or press heavy objects on its surface
- It is strictly forbidden to place the equipment near objects that will produce high temperature during charging
- The operating ambient temperature of the equipment shall not exceed -30 °C ~ +50 °C

⚠ WARNING!

- Do not use the device when the charging line is damaged
- Only for electric vehicle charging
- This product must be well grounded when used
- Do not use external wires or adapters
- Never put your fingers into the charging plug
- This product does not contain user maintainable parts. Please do not attempt repair and maintenance by yourself
- If the device cannot be charged normally according to the operation manual, please contact the seller or replace it

-01-

PRODUCT OVERVIEW

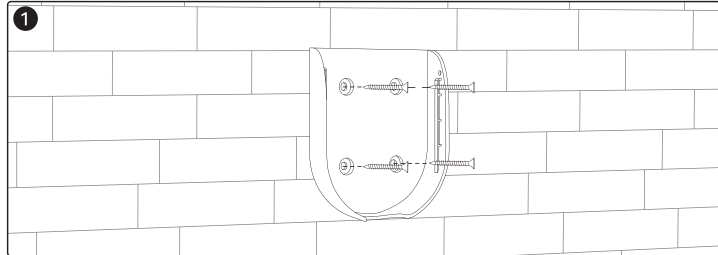
- 1 Cable
- 2 Control Box
- 3 LED Indicators
- 4 Button

1. If no grounding is detected after power-on, long press for 3 seconds to disable grounding detection.
2. Long press for 5 seconds after power-on to reset Wi-Fi function.

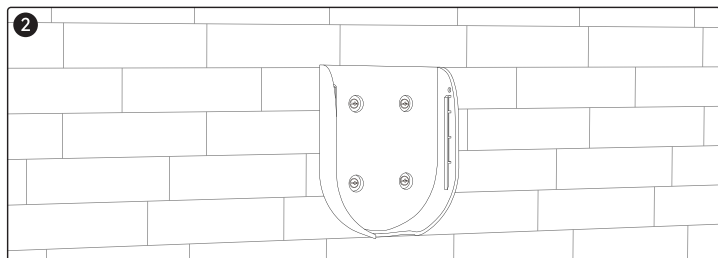
LED BEHAVIORS		
Green LED	Chasing	Charging
	Solid	Charging Complete
	Breathing	Scheduled
Blue LED	Solid	Standby
	Flashing	Connected
Red LED Flashing		
Ground fault Charging Status LED flashes red two (2) times	Overcurrent Charging Status LED flashes red five (5) times	
Overvoltage Charging Status LED flashes red three (3) times	Overtemperature Charging Status LED flashes red six (6) times	
Undervoltage Charging Status LED flashes red four (4) times	Leakage Charging Status LED flashes red eight (8) times	

-02-

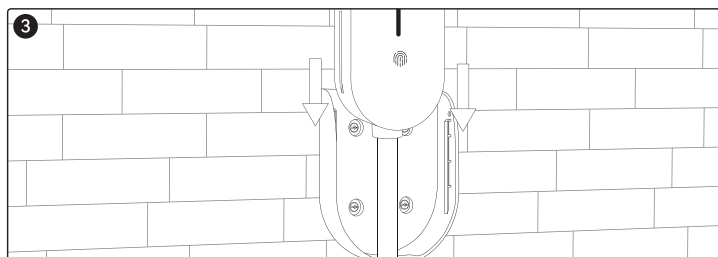
INSTALLATION INSTRUCTIONS



01. Fix the screws into the four holes on the wall mount plate, paying attention to the up and down orientation;



02. Use screws to attach the wall mount plate to the wall;

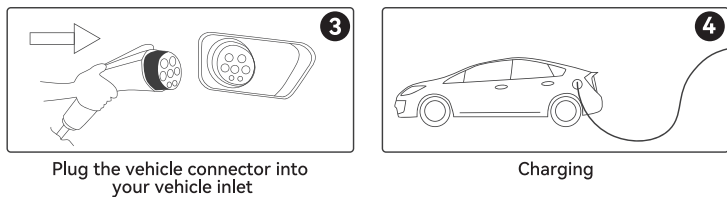
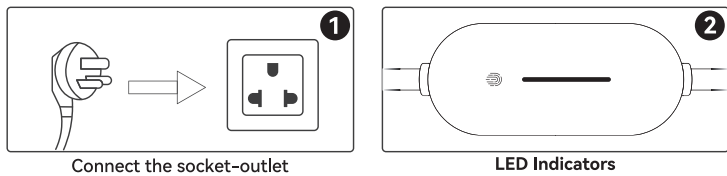


03. Hang the pile body on the wall mount plate from top to bottom;

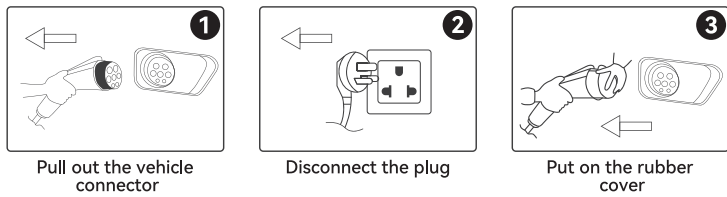
-03-

INTRODUCTION TO USE

Start Charging



End Charging



PRECAUTIONS

- Please follow the steps in the pictures carefully
- The current switching and setting of the schedule time must be done before the vehicle connector is inserted into the vehicle inlet, otherwise it cannot be set during the charging process

-04-

SPECIFICATIONS

Basic product parameters				
Rated input	Voltage	240V		
	Frequency	50 / 60 HZ		
Rated Output	Power	3.5kW	7.6kW	9.6kW
	Current	16A Max	32A Max	40A Max
Recommended Operating Conditions	Ambient Temperature	-30°C ~ +50°C / -22°F ~ 122°F		
	Relative Humidity	5% ~ 95%		
Security Protection	Multiple Protection	Over/Under voltage protection & Temperature protection & Over current protection & Current leakage protection & Grounding protection		
	Protection Degree	Type 4		
Other	CCID	CCID 20		
	APP Control	Yes		
	Regulations	SAE-J1772		
	Applicable scene	indoor/Outdoor		
	Cooling method	Natural cooling		
Equipment dimension		237*103*53mm (L*W*H)		

PACKING LIST

AC EV Charger * 1	User Manual * 1
-------------------	-----------------

-05-

STORAGE

- If the product is not used immediately after purchase, it should be stored in a dry and well-ventilated indoor place, or stored in a dry and well-ventilated indoor place during short-term or long-term storage. Do not store in a humid environment or a place exposed to sunlight.
- The equipment operates under normal operating conditions and usually does not require special maintenance during its service life. If you have any questions, please contact the manufacturer.

SAFETY FEATURES

LEAKAGE PROTECTION

- When the leakage protection is activated, the device needs to be unplugged and restarted.
- Improper connection of the equipment-grounding conductor can result in a risk of electric shock. Check with a qualified electrician or serviceman if you are in doubt as to whether the product is properly grounded. Do not modify the plug provided with the product. If it does not fit the outlet, have a proper outlet installed by a qualified electrician.

OVER-CURRENT PROTECTION

- When the current exceeds the maximum safety value, the device needs to be unplugged and restarted.

OVER-VOLTAGE PROTECTION

- When the voltage exceeds a certain value, the protection is activated and restored. The voltage recovers automatically after it is stabilized.

UNDER-VOLTAGE PROTECTION

- When the voltage falls below a certain value, the protection is activated and restored. The voltage recovers automatically after it is stabilized.

TEMPERATURE PROTECTION

- When the temperature of the control box exceeds 85°C, the protection will be activated and restored automatically once the temperature has decreased to 70°C.

-06-

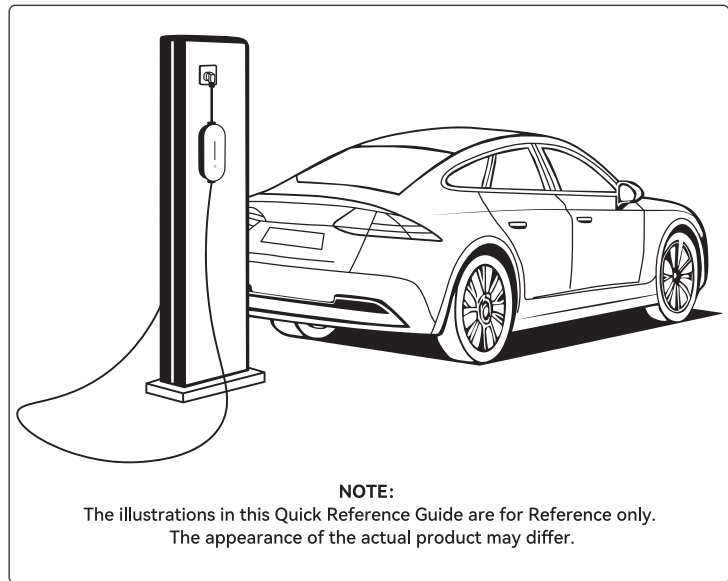
HOW TO USE THE APP

- Please scan the QR code to download the app.



- After opening the App, tap the plus sign in the upper right corner to automatically discover the device. Enable Wi-Fi and Bluetooth permissions, then start searching.

Enter the Wi-Fi account and password, wait for the charging device to be successfully added to the Internet, and then you will be taken to the App's charging display interface.



NOTE:

The illustrations in this Quick Reference Guide are for Reference only. The appearance of the actual product may differ.

-07-

E-Mail:
Contact@gocan.com

Website:
https://www.gocan.com

Manufacturer:
Shenzhen green ocean new energy Technology Co., LTD