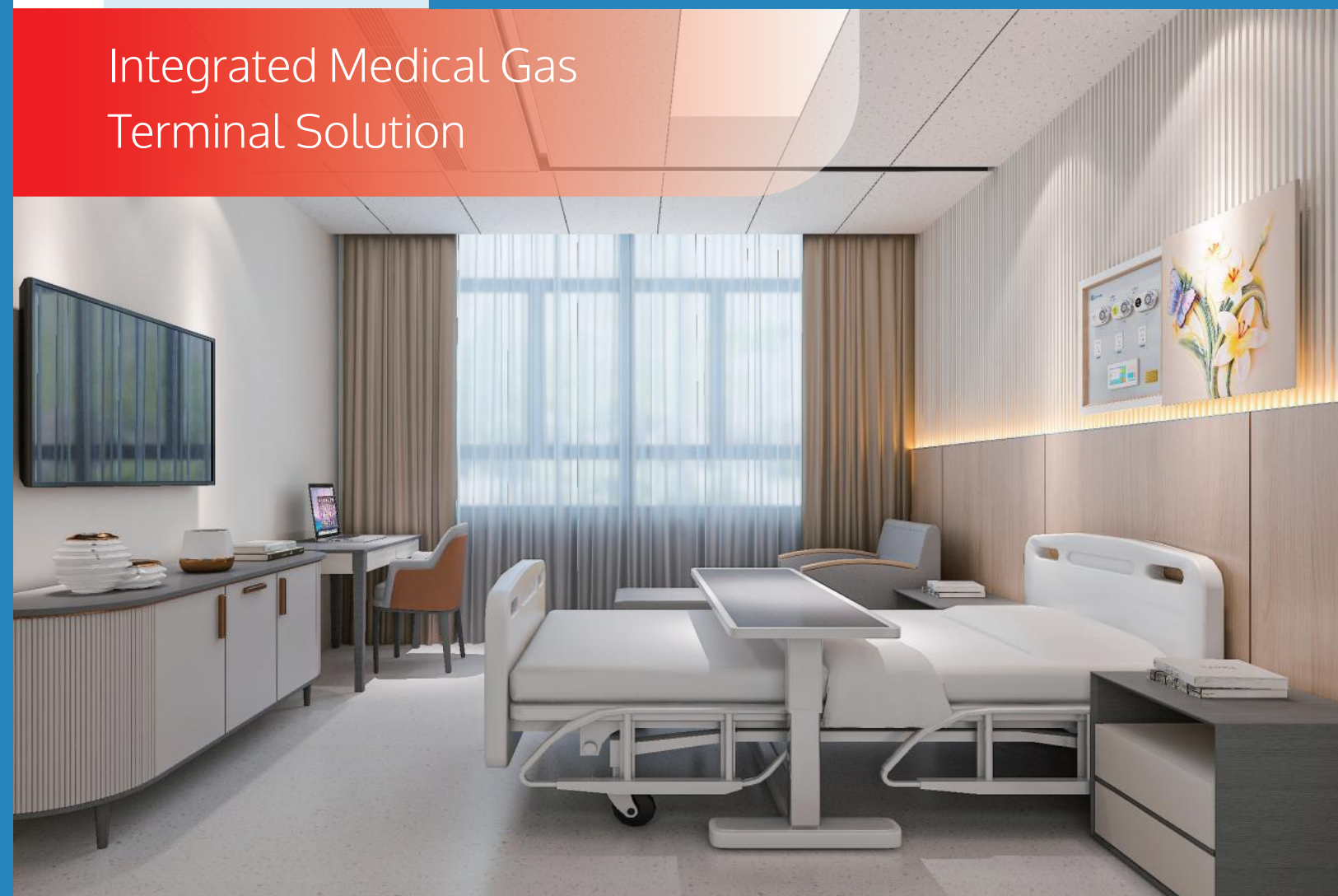


# HOSPITAL BED HEAD UNIT SYSTEM

Integrated Medical Gas  
Terminal Solution



Website: [www.eter-group.com](http://www.eter-group.com)

Tel: 86-0731-88905428

Fax: 86-0731-88922397

Add: No. 7, HuaLong Road, Hi-Tech Development Zone,  
Changsha, Hunan Province, China

# Contents



03/04

Company Profile

05/24

Product Description

- Product Description
- ET-S200B(Classic Style)
- ET-S210(Classic Style)
- ET-S250(Classic Style)
- ET-S220(Supreme Style)
- ET-S300-LS(Vertical)
- ET-S235-QR(Embedded)
- ET-S305-QJ(ICU)
- ET-QH600(Mural Style)
- ET-MT700(Embedded)
- ET-AL700(Embedded)
- Medical Gas Outlet
- Oxygen Flowmeter With Humidifier
- Vacuum Regulator

25

Honorary Qualification

26

Company History





# Company Profile

Founded in 2003, Hunan Eter Medical Co., Ltd. has developed into a state-level high-tech enterprise and software enterprise integrating the business of research, development, production and sales, and has successfully been listed on the NEEQ (National Equities Exchange and Quotations) with the stock code of 839074 in 2016.

The Company has passed CE certification and the ISO quality management system certification, and gained a variety of certificates, including ISO9001 Quality Management System Certificate, ISO13485 Medical Device Quality Management System Certificate, ISO14001 Environmental Management System Certificate, as well as the national-level China Quality Credit Enterprise Certificate and AAA Credit Grade Certificate.

Adhering to the concept of caring for society and creating value with integrity, pragmatism and dedication, ETR's top R&D team has developed three series of products over the past decade, including the integrated solutions for IOT smart ward, the integrated solutions for medical gas system, the integrated solutions for digital medical

cleaning engineering system, through independent R&D and production with market demand as the orientation. The years of hard work and accumulation have rewarded ETR with the title of industry leader in integrated solutions for digital wards.

In addition to the domestic market, the ETR products have been exported to Southeast Asia, Africa, South America, the Middle East and other overseas markets. The after-sales service network covers more than 20 provinces and cities throughout the country, providing customers with after-sales services, quick response and other technical support services throughout the process.

ETR is committed to providing the users with top-quality products and services on the basis of orderly marketing after-sales service network.





Medical Bed Head Unit  
ET-S200B(Classic Style)



### Features >

- 01 Three-cavity structure design realizes the separation of strong current, weak current and gas circuit;
- 02 Aluminum alloy material electrostatic spray surface treatment, electrostatic powder coating, film coating, sandblasting , oxidation, etc., colors can be customized;
- 03 Power switches and sockets can be surface-mounted or flush-mounted;
- 04 Power sockets and switches can be maintained without opening the device's panel;
- 05 According to the needs of the hospital, various functional configurations can be customized.





Medical Bed Head Unit  
ET-S210(Classic Style)



More >



Features >

- 01 Three-cavity structure design realizes the separation of strong current, weak current and gas circuit;
- 02 Aluminum alloy material electrostatic spray surface treatment, beautiful appearance, wear-resistant, easy to clean;
- 03 Customized design of dust cover (rotary, flip-up, push-pull), easy to operate, beautiful and tidy;
- 04 With read light, according to the needs of the hospital, various functional configurations can be customized;
- 05 Color can be customized, it can meet the needs of hospitals and departments with different decoration styles.

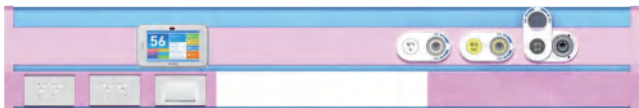




Medical Bed Head Unit  
ET-S250(Classic Style)



More >



## Features >

- 01 Three-cavity structure design realizes the separation of strong current, weak current and gas circuit;
- 02 Aluminum alloy material electrostatic spray surface treatment, beautiful appearance, wear-resistant, easy to clean;
- 03 Customized design of dust cover (rotary, flip-up, push-pull), easy to operate, beautiful and tidy;
- 04 With read light, according to the needs of the hospital, various functional configurations can be customized;
- 05 Color can be customized, it can meet the needs of hospitals and departments with different decoration styles.





## Medical Bed Head Unit ET-S220(Supreme Style)



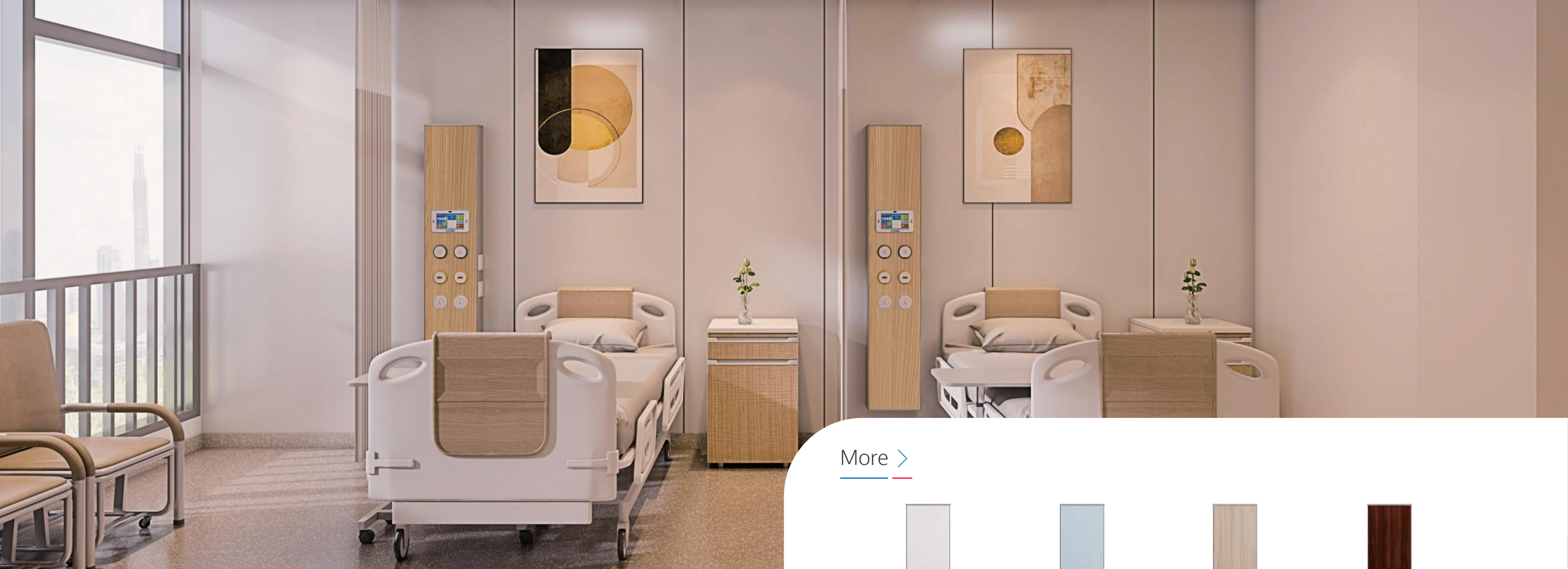
More >



Features >

- 01 Four-cavity structure design realizes the complete separation of strong current, weak current and gas circuit;
- 02 Aluminum alloy material electrostatic spray surface treatment, beautiful appearance, wear-resistant, easy to clean;
- 03 Customized design of dust cover (rotary, flip-up, push-pull), easy to operate, beautiful and tidy;
- 04 With read light strip, according to the needs of the hospital, various functional configurations can be customized;
- 05 Color can be customized, it can meet the needs of hospitals and departments with different decoration styles.

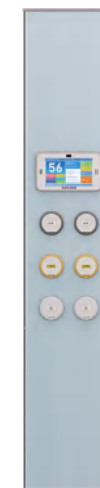
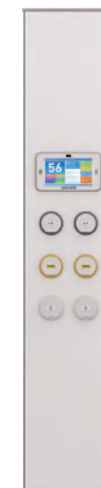




## Medical Bed Head Unit ET-S300-LS(Vertical)



More >



Features >

- 01 Three-cavity structure design realizes the separation of strong current, weak current and gas circuit, safe and reliable;
- 02 Made of high-strength aluminum alloy, the surface is treated with electrostatic powder spraying, film pasting, sandblasting and oxidation, color can be customized;
- 03 Vertical installation on the side of the bed, easy to use;
- 04 According to the needs of the hospital, various functional configurations can be customized;
- 05 Color can be customized.





## Medical Bed Head Unit ET-S235-QR(Embedded)



More >



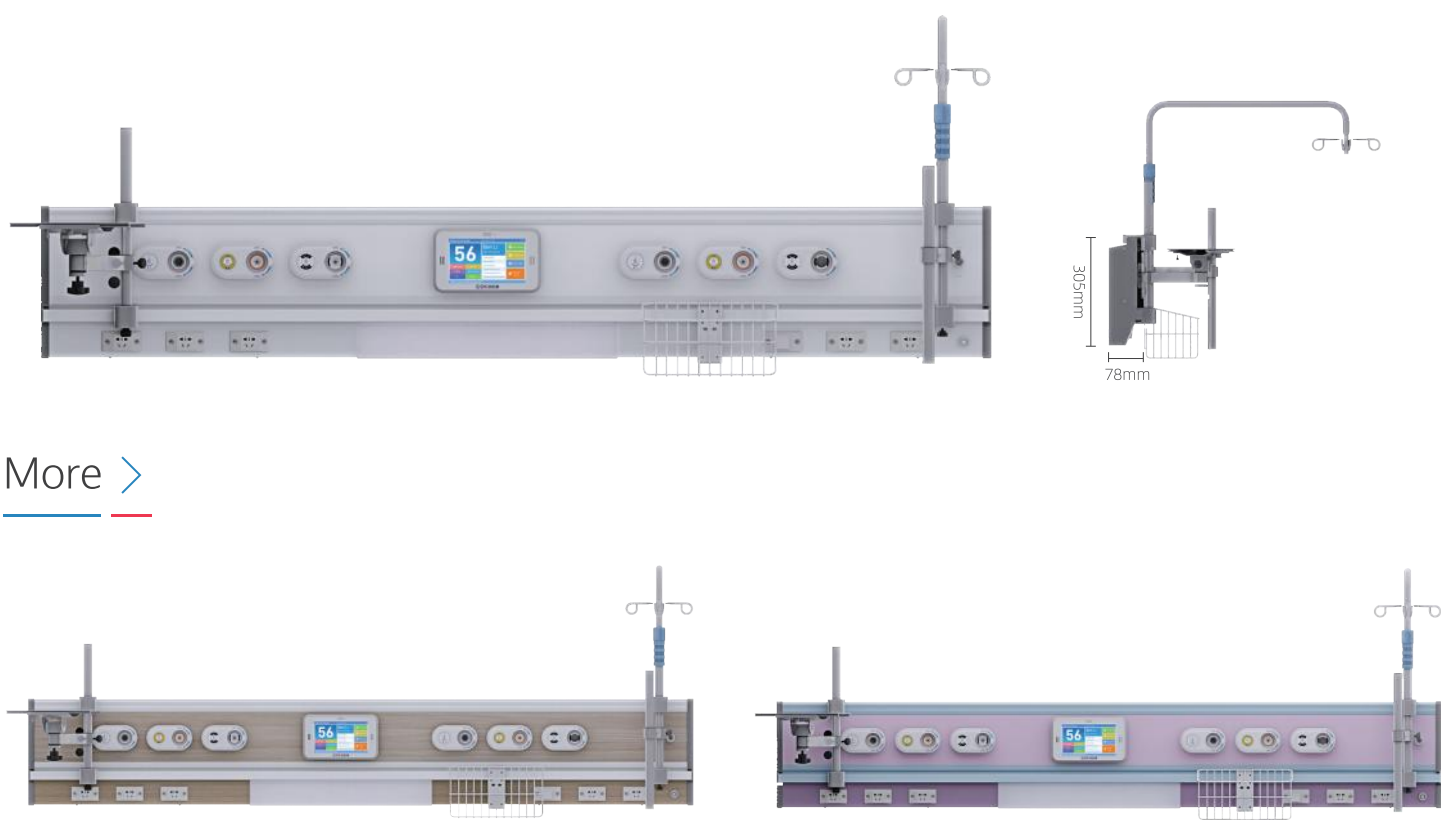
Features >

- 01 Four-cavity structure design realizes the complete separation of strong current, weak current and gas circuit;
- 02 Embedded wall and external wall installation can be selected according to the needs of the hospital;
- 03 Made of high-strength aluminum alloy, the surface is treated with electrostatic powder spraying, film pasting, sandblasting and oxidation;
- 04 The socket can be embedded mounted and surface mounted, and the power sockets, switches, gas terminals, call points can be serviced without opening the panel;
- 05 According to the needs of the hospital, various functional configurations can be customized;
- 06 Color can be customized.





Medical Bed Head Unit  
ET-S305-QJ(ICU)



More >



## Features >

- 01 Three-cavity structure design realizes the separation of strong current, weak current and gas circuit, safe and reliable;
- 02 Made of high-strength aluminum alloy, the surface is treated with electrostatic powder spraying, film pasting and electrophoresis;
- 03 Monitoring, breathing, and infusion functions;
- 04 Modular combination, can freely hang monitor bracket, infusion stand, medical examination light, sundries basket and other accessories;
- 05 Easy installation, flexible operation, small space occupation;
- 06 Color can be customized.



Medical Bed Head Unit

# ET-QH600(Mural Style)



More >



## Features >

- 01 Gas and current separation, safe and reliable, it meets the national standard;
- 02 The installation panel is seamless and adopts aluminum alloy anodized wire drawing process;
- 03 Embedded installation, Using hidden silent industrial load sliding track to ensure mural's flexible move;
- 04 Customized design of dust cover (rotary, flip-up, push-pull), easy to operate, beautiful and tidy;
- 05 The mural pattern can be customized according to customer requirements.

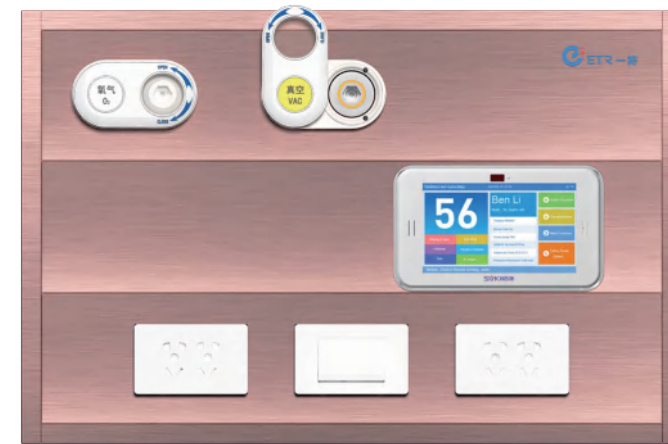






Medical Bed Head Unit

## ET-MT700(Embedded)



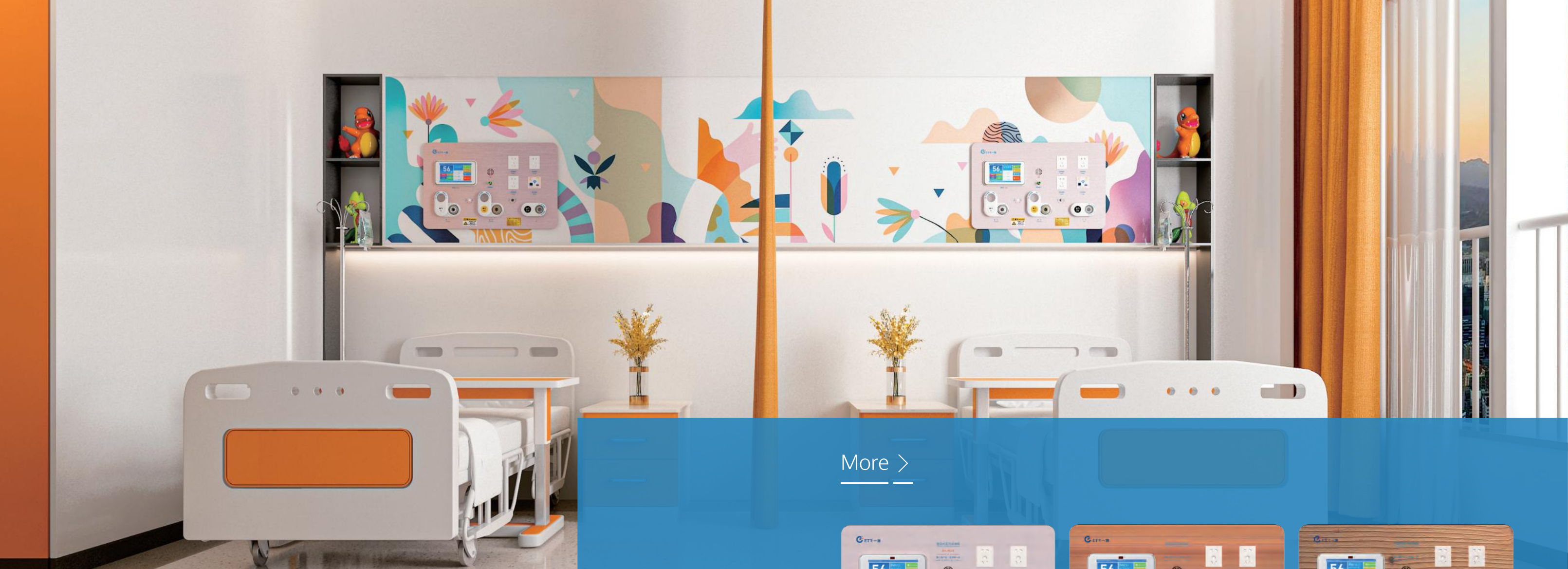
[More >](#)



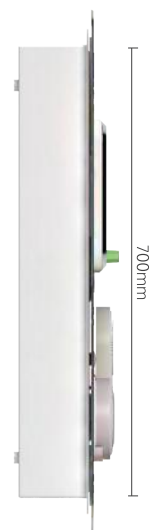
[Features >](#)

- 01** Gas and current separation, safe and reliable, it meets the national standard;
- 02** Material can choose aluminum alloy or aluminum alloy wire drawing;
- 03** Embedded installation, integrated design, perfectly combined with the wall;
- 04** Advanced metal texture, The minimalist appearance design, suitable for a variety of decoration styles;
- 05** Customized design of dust cover (rotary, flip-up, push-pull), easy to operate, beautiful and tidy;
- 06** Color and function can be customized according to customer requirements.

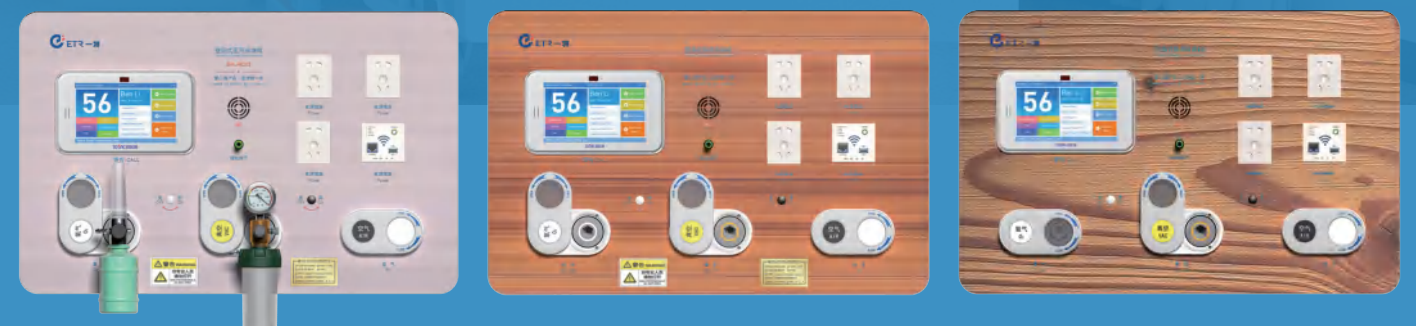




Medical Bed Head Unit  
ET-AL700(Embedded)



More >



## Features >

- 01 Gas and current separation, safe and reliable, it meets the national standard;
- 02 Material can choose aluminum alloy or aluminum alloy wire drawing;
- 03 Embedded installation, integrated design, perfectly combined with the wall;
- 04 Advanced metal texture, The minimalist appearance design, suitable for a variety of decoration styles;
- 05 Customized design of dust cover (rotary, flip-up, push-pull), easy to operate, beautiful and tidy;
- 06 Color and function can be customized according to customer requirements.



Product Description

# Medical Gas Outlet



British Standard



France Standard



German standard



American Standard



Wall Mount



Japanese Standard

## Features >

- 01 British Standard/German Standard/Japanese Standard/France Standard/American Standard available;
- 02 Specified model and color to clarify for different gases;
- 03 Build-In Maintenance Valve;
- 04 Easy for installation;
- 05 100% tested for gas leakage;
- 06 With CE and ISO 13485 certificate.

Product Description

# Oxygen Flowmeter With Humidifier



## Features >

- 01 High strength aluminum alloy and bottle's material ABS for outstanding durability;
- 02 Different material can be customized with Antibacterial plastic;
- 03 Each unit shall be 100% factory tested;
- 04 Round Tube Chrome-plated Brass Body;
- 05 Slim Body Flowmeter, 0-15L/0-3.5L capacity;
- 06 Polycarbonate Tubes for Maximum Durability.

Product Description

# Vacuum Regulator



## Features >

- 01 Diaphragm type pressure regulator, ensure stable vacuum pressure;
- 02 Vacuum trap prevents overflow of waste fluid from entering the suction regulator;
- 03 With special rinsing and disinfection accessory ;
- 04 Combined assembly structure, easy for installation and maintenance ;
- 05 With CE and ISO certificate.



# Honorary Qualification



# Company History

