

# 360° Rotating Dual-camera Inspection Camera



---

## INSTALLATION GUIDE & MANUAL

ⓘ Please read this user manual carefully before using





# Content

Warning and Precaution	1
Product Introduction	2-4
Function Introduction	5-6
Specification	7
Accessories	8

## WARNING

Read all safety warnings and instructions before using this product. Failure to follow warnings and instructions may result in electric shock, fire and potential injury.

## PRECAUTION

1. Keep this manual for future reference.
2. Do not operate this equipment in flammable liquids, gases, hazardous chemicals, super heated liquids, or severe powder life.
3. Please be careful when operation, avoid dropping or heavy pressure to the unit.
4. Format the memory card before the first use, and always back up your data after use.  
No hot swapping the SD card, it might cause data loss and even SD card corruption.
5. Turn off the power switch in time and unplug all connectors after use.
6. After being used, turn off the display and pull out all the connection joints.
7. Please don't shut down the power while playing or recording a video, it might cause damage to the machine or data loss.
8. Warranty service will be void if the unit set was taken apart or artificially damaged.

## Battery

- Please fully charge the battery for the first time of receiving the unit.
- During charging, the power adapter indicator light is red, and when it is fully charged, the indicator light changes to green.
- Please charge device at least once every 3 months to prevent any damage to the battery.



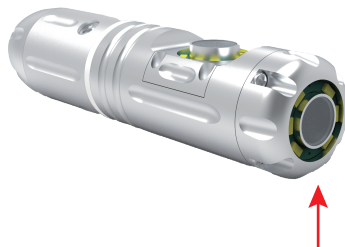
Never dispose of used batteries or rechargeable batteries in household waste. As a consumer, the user is legally required to take used batteries to appropriate collection sites, the retail store where the batteries were purchased, or wherever batteries are sold. Disposal: Do not dispose of this instrument in household waste. The user is obligated to take end-of-life devices to a designated collection point for the disposal of electrical and electronic equipment.

## Description



## Instruction for Product

### 1.Camera (Stainless steel housing Metal housing)



- ① Side 360° rotating camera (6 white lights)    ② Front camera (6 white lights)

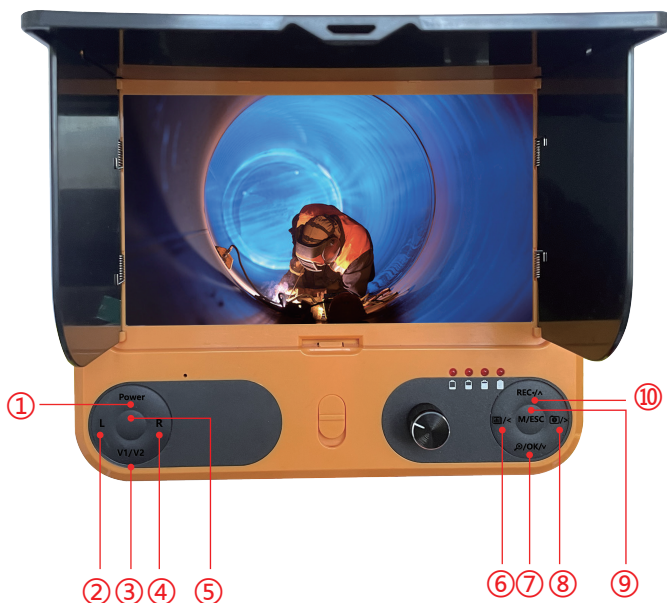
**Horizontal 360° rotation, dual lens camera.**

# Introduction

## Monitor with DVR Video Recording Function



This operation is only available when the unit with DVR function.  
Please surely insert the TF card before using.



① **Power**

② **L**

③ **V1/V2**

④ **R**

⑤ **Central Button**

⑥  /<

⑦  /OK/v

⑧  />

⑨ **M/ESC**

⑩ **REC•/△**

**Power**      Power ON / OFF

**L**            Turn left

**V1/V2**      Front/Side Camera Switching

**R**            Turn right

### **Central Button**

**REC·/∧** In the monitoring interface, press REC to start video recording , press it again to exit. In the menu interface, used as a move-up function key.




**⌂/OK/√** In the monitoring or video interface, press ⌂/OK to Zoom in (level 0-5).  
In the menu interface, used as a move-down function key.  
In the playback interface, as a confirm key.

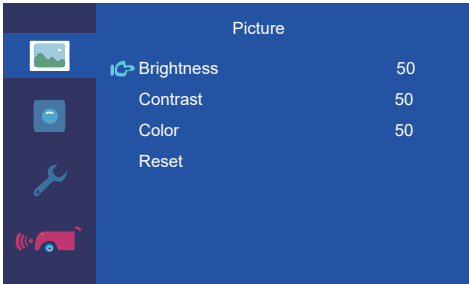
**⏮/←** In the monitoring interface, press ⏮/← to enter the playback screen. In the menu interface, used as move-left function key.

**M/ESC** In the monitoring or video interface, press M/ESC to enter the menu interface. Press it again to exit. In the submenu interface, press M/ESC to return to the previous page.

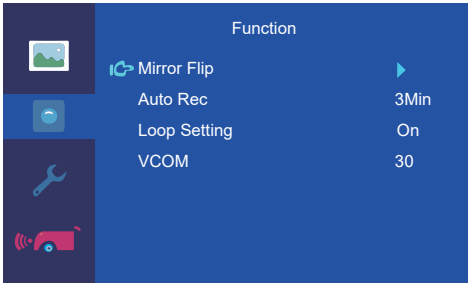
**⏭/→** In the monitoring or video interface, press ⏭/→ to capture a picture.  
In the menu interface, press it to move right

# Function Introduction

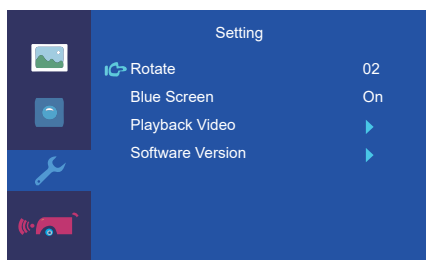
In the monitoring or video interface, press M/ESC to enter the menu interface. Press REC and /OK to select up or down. Press /< and /> to adjust sub-options.



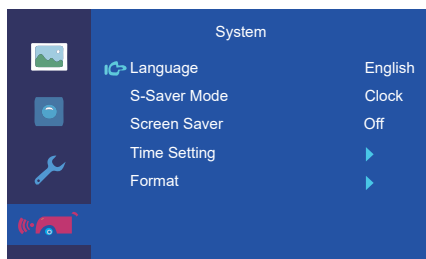
Brightness, contrast and chroma can be adjusted in the image menu interface.



The recording parameters can be adjusted in the function menu interface.

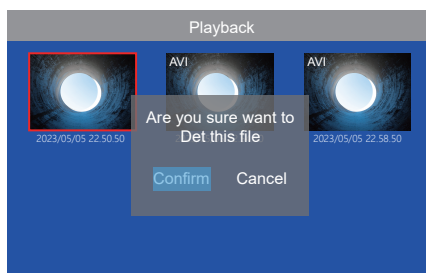


In the Settings menu interface, you can adjust the flip, background color, or enter the playback interface



The language, screen saver time and clock can be adjusted in the system menu interface.

## (Delete operation)



In the monitoring interface, press / < to enter the playback interface, press / < and / > to select left or right to select the file you want to delete, and press REC to pop up the confirmation window, press /OK to confirm the deletion.

## Specifications

Hem:	Parameter
Charger:	AC 100 -240V DC 12.6V 1000MA
Battery:	Lithium Battery 11.1V 2600MA
Continuous use time for battery:	<b>Approximate 4h</b>
Investigation depth:	5M
Material:	High Strength Glass Fibre Wire
Camera light source:	(6+6) High White LED Lights (Adjustable)
Camera working voltage:	12V
Water proof:	IP68
Camera material:	Stainless Steel
Camera protective cover parts material:	Plastic
Menu languages:	Multi -Language
focal length :	15cm
Camera picture:	Color
Operating temperature:	-20 -60 °
Package size:	



# Packaging List



Camera



Battery Charger



ABS Plastic Box



Silicone Rings



User Manual



Protective Case



Centralizer

