

HIGH-PERFORMANCE
HYDRAULIC CUTTING ATTACHMENTS



PRODUCT GUIDE
ROCK SAW

WWW.YCATTACHMENTS.COM

CANADA QUARRYING

QUARRYING | CANADA

YS-15SS rock saw with a 1400mm diamond tipped saw blade installed on a 20-ton excavator for cutting limestone.



QUARRYING | CHINA

The YS-20SS rock saw is installed on a Doosan DH225 excavator and is cutting rocks on site.



DEMOLITION | NETHERLANDS

YS-10SS rock saw is equipped with a 1200mm tungsten carbide tipped blade and is installed on a Hitachi ZX130 excavator for vinyl sheet piles cutting.



TUNNELING | CHINA

YS-20SS is equipped with a 2200mm diamond tipped saw blade, installed on a 20-ton excavator, and is used to cut granite in tunnels.



EXCAVATION | CHINA

A Liugong 915D excavator is equipped with a YS-10SS model rock saw and a 1400mm diameter diamond saw blade.

DISMANTLE NIGERIA



DEMOLITION | NIGERIA

YS-20SS rock saw is equipped with a 1500mm diamond tipped saw blade and is installed on a XCMG wheeled excavator for cutting reinforced concrete pavements.



QUARRYING AUSTRALIA

QUARRYING | AUSTRALIA

YS-20SS rock saw is installed on the HYUNDAI 300 excavator and is equipped with a 3000mm diamond tipped saw blade for mining marble.



TUNNELING | INDIA

YS-10HRS rock saw is equipped with a 1400mm diamond tipped saw blade and is installed on a Komatsu PC130 excavator for tunneling.



QUARRYING | ISRAEL

YS-20SS rock saw is equipped with a 2600mm diamond tipped saw blade and is installed on a 38-ton kobelco excavator for cutting limestone.



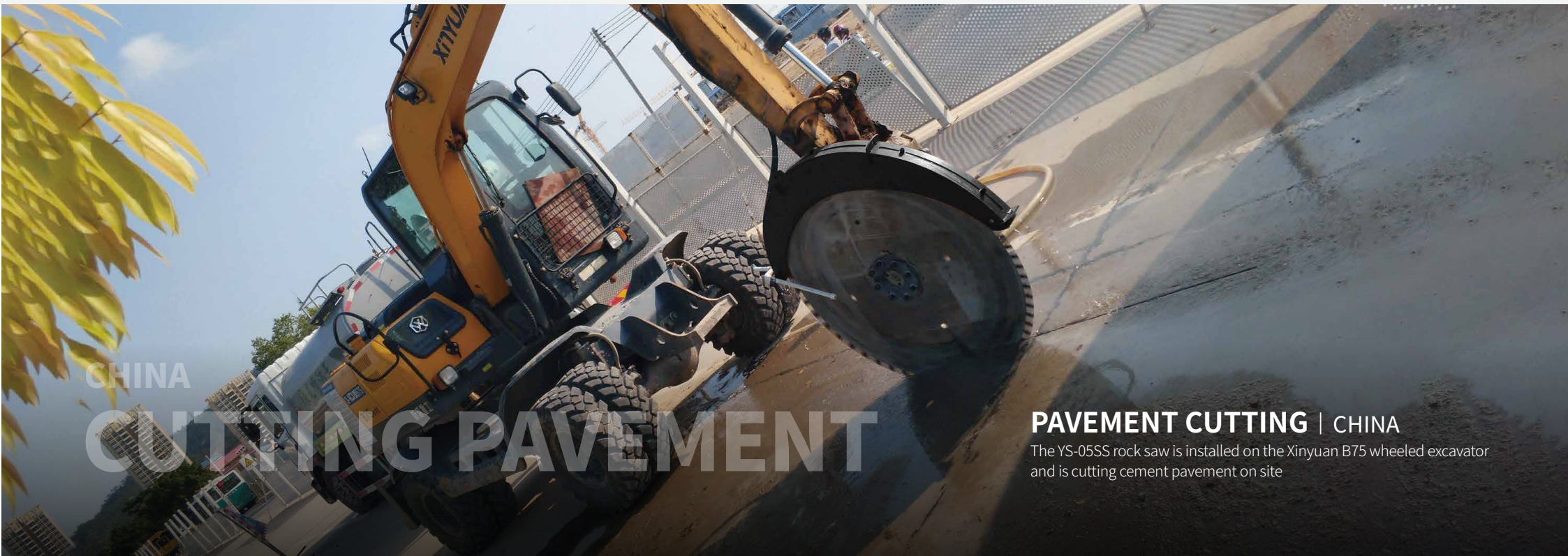
TUNNELING | CHINA

YS-05SS is equipped with a 1200MM diameter saw blade, installed on a Lonking 6060 excavator, and is used for cutting granite tunnel faces.



FOUNDATION EXCAVATION | CHINA

The YS-05SS rock saw is equipped with a 1200MM saw blade and is installed on a 10-ton excavator to cut rock surfaces.



CHINA

CUTTING PAVEMENT

PAVEMENT CUTTING | CHINA

The YS-05SS rock saw is installed on the Xinyuan B75 wheeled excavator and is cutting cement pavement on site

COMPANY PROFILE

Yichen has been focusing on the development, production and sales of excavator attachments since 2010. The hydraulic saw series includes disc saws and wire saws, which are suitable for a variety of application scenarios and cutting of various materials.

Yichen guarantees quality, competitive prices and first-class service from beginning to end. Thanks to our extensive experience in the industry, as a team we can provide the best and most effective solutions for all needs. From installation to training to after-sales service, we consistently support all our customers.



DIRECTORY

PRODUCT INTRODUCTION	1
FEATURES	2
SAW BLADE & TIPS	4
OFFSET EXTENSION	6
ROTATION BRACKET	7
DOUBLE BLADE SAW	8
TRIPLE BLADE SAW	10
WIRE SAW	11

SINGLE BLADE ROCK SAW

High-performance rock and concrete cutting attachments

for base machines with hydraulic system.

**Increase productivity, precision, safety with
Yichen excavator saws.**



High performance, low maintenance



For excavators, skid steers, backhoes



**Cut rock, reinforced concrete, asphalt, wood, metal,
plastic etc.**



**For all brands and models of excavators, such as Komatsu,
Kubota, Kobelco, Caterpillar, Case, Hitachi, Hitachi, Volvo,
Doosan, Hyundai, JCB, John Deere, SANY, XCMG and more.**

APPLICATION



Quarrying



Demolition



Tunneling



Excavations



Trenching



Forestry



Landscaping



Mining



FEATURES

CENTRALIZED OIL PORTS

All oil ports are designed on the same side, making it easier and safer to manage your hydraulic hoses.

REVERSIBLE BLADE SPIN

By utilizing the reversible blade spin feature, when connect the saw to a two way hydraulic circuit, the operator can freely control the spin direction of the saw blade just in the cab of the base machine, so that debris from cutting can be directed away from exposed property or persons. Sometimes the saw blade gets stuck and stops rotating when cutting horizontally. And the Yichen rock saw, due to its ability to control the direction of rotation, allows operators to lift the saw blade out of its trap by rotating it in the opposite direction while accelerating again.

DIRECT DRIVE - NO GEARBOX

At Yichen, we try to optimise our designs to give greatest cutting efficiency for the blade diameter required. So we use no gearbox between the motor and the output shaft to maximize efficiency, reduce weight and minimize maintenance required.



RAPID AUTOMATIC BLADE BRAKE SYSTEM

The automatic blade brake stops the blade immediately when the power to the saw has been cut off. Significantly improved the safety of the saw during use. The automatic braking system of Yichen rock saw is composed of the hydraulic circuit of the rock saw, without wearing parts. This means that maintenance is not required, parts do not need to be replaced regularly, and there is no powder or debris contaminating the working parts of the saw from worn brakes.

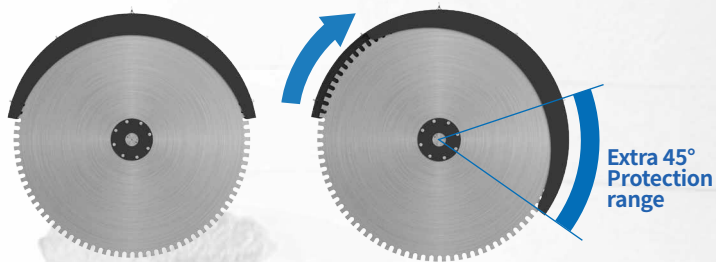
ROBUST BEARING HUB

Double-bearing protection with dust seal to protect the motor for long operating life and low maintenance. Yichen rock saw motors are protected from axial loads by a robust hub. It contains double bearing protection, and a seal that prevents any dirt entering the bearing space.



ADJUSTABLE SHIELD

The protective shield of Yichen rock saw consists of two independent components. The inner shield can rotate 360 degrees (i.e. the entire circle) around the saw blade. The outer shield can independently rotate 45 degrees around the inner shield. With this feature, the protective range of the shield can be increased to better protect surrounding people or property from flying cutting debris damage when necessary. The outer cover provides comprehensive protection for both sides of the cutting blade. When it is necessary to cut along the boundary wall, the outer cover can be removed. The outer edge of the inner shield is flush with the outer surface of the saw blade.



MULTI-POINT WATER-COOLED JET SYSTEM

The water is supplied by a main pipe, the water distributor distributes the water to multiple spray points on the saw blade shield, simultaneously cool the passing diamond segment. It can effectively cool down saw blades and diamond segment to improve their cutting performance and extend their service lives.

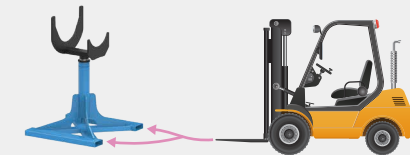


CUTTING OF VARIOUS MATERIALS

Yichen saw attachment can cut various materials such as concrete, reinforced concrete, rocks, trees, copper, aluminum, steel, fiberglass, plastic etc. through different saw configurations and blades. The rocks such as sandstone, granite, marble, hard limestone, basalt etc.

MULTIFUNCTIONAL STAND

Yichen saws come complete with a multifunctional stand. The stand cradle rotates to assist when putting the saw into the cradle. It also allows easy rotation for picking up the saw on the other side of the boom. The stand can be fitted with a support arm for offset extension support. The base of the stand is specially designed for forklift transport or loading.



FEATURE FOR FORKLIFT OPERATION

The bottom of the stand has a feature specially designed for forklift to facilitate the transportation and load of the rock saw as a whole.

PRODUCT PARAMETERS

Model	Excavator	Max Power Output	Max Flow	Recommended Flow	Max Pressure	Output Torque	Output Shaft Speed	Weight	Saw Blade Spec
YS - 05SS	5-10 ton	33 kW	105 LPM	60- 100 LPM	315 bar	960 Nm@315bar	0- 549 RPM	250 kgs	Φ 800- 1400 mm
YS - 10SS	8-16 ton	48 kW	160 LPM	100- 150 LPM	315 bar	1580 Nm@315bar	0- 509 RPM	350 kgs	Φ 1400- 2000 mm
YS - 15SS	15-25 ton	59 kW	300 LPM	150- 290 LPM	315 bar	3100 Nm@315bar	0- 480 RPM	450 kgs	Φ 1600- 2200 mm
YS - 20SS	20-45 ton	80 kW	420 LPM	200- 390 LPM	315 bar	4900 Nm@315bar	0- 425 RPM	750 kgs	Φ 2200- 3600 mm
YS - 25SS	25-60 ton	100 kW	430 LPM	300- 420 LPM	315 bar	6630 Nm@315bar	0- 325 RPM	950 kgs	Φ 2600- 3600 mm

*The data provided above is not binding, as the manufacturer reserves itself the right to make improvements to its products at any time and with no advance notice.

SAW BLADE

MATERIAL

Yichen takes 75Cr1 steel as its Saw Blade material.

75Cr1 steel is a kind of high-carbon chromium steel, with excellent wear resistance and hardness, widely used in the manufacture of tools, molds, bearings and other high-strength parts. It is also widely used as a saw blade in industries such as stone manufacturing, construction, and engineering.



APPLICABLE

Combined with different saw tips, various materials can be cut efficiently



For concrete and rock cutting



For wood cutting



For cutting copper, aluminum and plastic



For cutting steel

DIAMOND TIPPED SAW BLADE

rocks, concrete, reinforced concrete, fiberglass, tarmac

TUNGSTEN-CARBIDE TIPPED SAW BLADE

plastic, aluminum, copper, metal

SAW BLADE TIPS

TUNGSTEN-CARBIDE SAW TIPS

Specialized in cutting all kinds of grass, wood, plastic, aluminum, metal and etc.

Yichen carbide saw tips have the advantage of being extremely corrosion-resistant, extraordinarily tough, strong soldering and highly wear-resistant which increases the tool life by up to 20%.

BEST

Saw tip is the wear part welded to the tip of the saw blade. Yichen has equipped its saw blade with **the best tips.**

DIAMOND SAW TIPS

Specialized in wet cutting concrete, rock, fiberglass, tarmac, etc.

Yichen diamond saw tips have the characteristics of fast cutting, long life and stable performance. Different diamond segment sizes are suitable for different saw blade sizes. With strong adaptability, and no debris.



OFFSET EXTENSION

OFFSET EXTENSION

When cutting is required outside the excavator track, such as along a wall, an offset extension is an necessary.



LENGTH CUSTOMIZABLE

The length and structure of the offset extension can be customized to meet different requirements.

STRENGTHEN SUPPORT

Designed stand for the offset extension, providing support to offset extension.



SPECIAL SHIELD

The outer edge of the shield is flush with the outer surface of the saw blade. it can still provide protection while the saw blade is flush cutting against the wall.

FLUSH CUTTING FEATURE

Without protuberance of fixing plate, allowing the saw blade to work completely flush on the wall surface.

ROTATION BRACKET

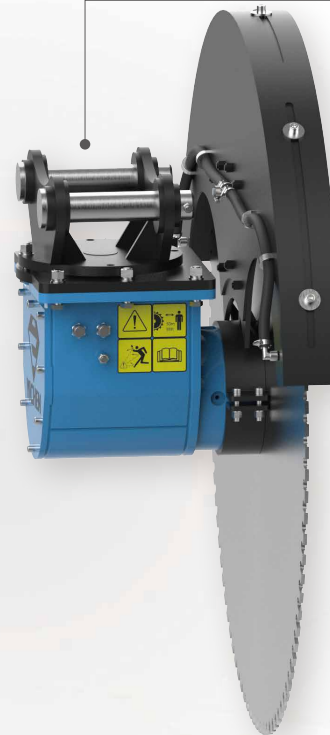
HYDRAULIC ROTATION BRACKET

By controlling the motor and solenoid valve, the operator can freely control the cutting angle of the saw in the excavator cab.



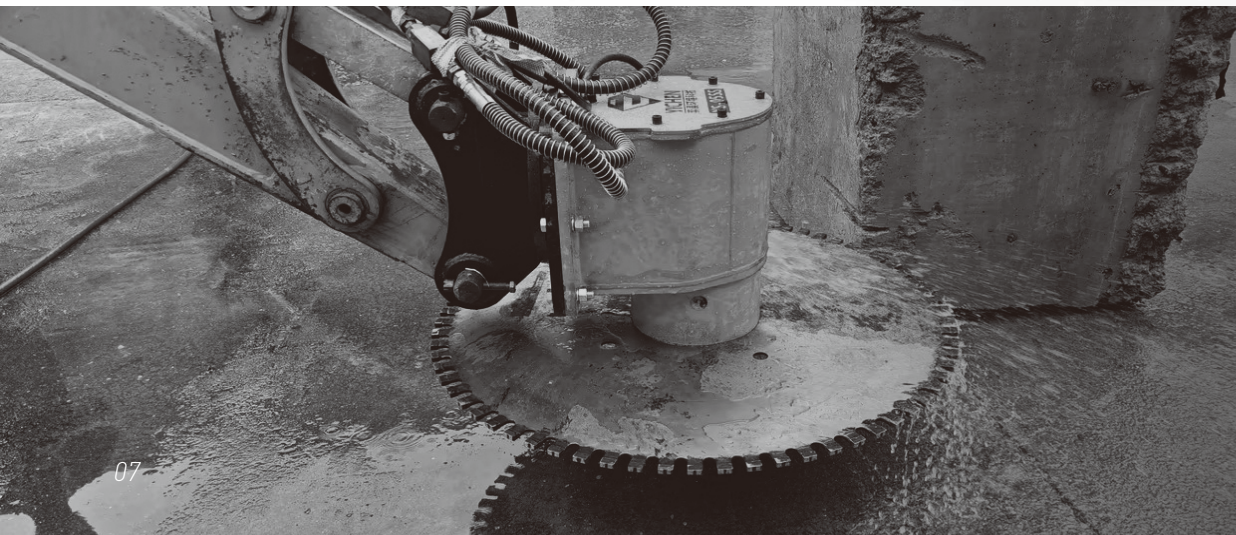
MANUAL ROTATION BRACKET

This is a cost-effective rotation solution that allows your saw to switch between vertical cutting, horizontal cutting, and angle cutting by manually adjusting the angle.



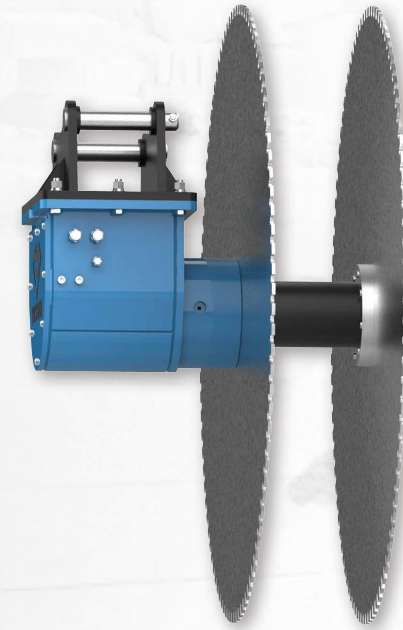
ROTATION BRACKET

The rotating bracket allows your saw to switch between **different cutting angles**, which helps you deal with more complex working conditions.



HORIZONTAL CUTTING

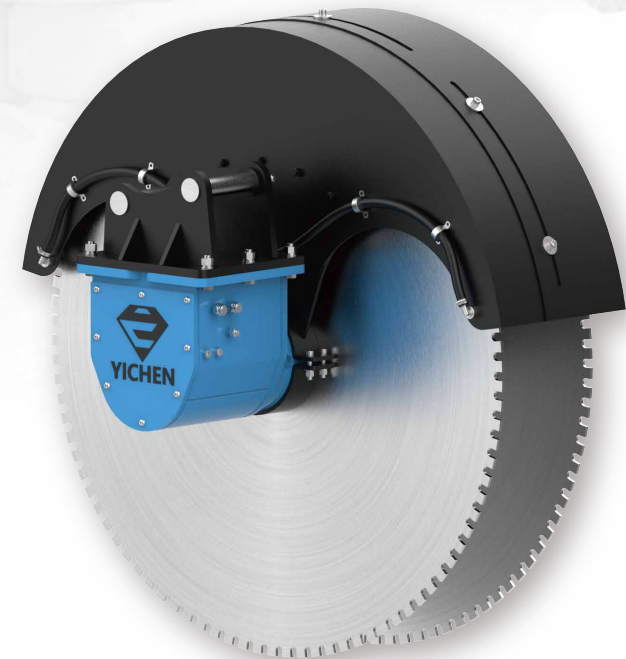
CONVERT TO MULTIBLADE SAW



PRECISE SPACING PARALLEL CUTS

Yichen diamond rock saw has robust double-bearing protection and can be installed with multiple saw blades through sleeve connection, to make two or more cuts simultaneously. Precisely parallel cutting without careful measurement and repositioning of the excavator.

- 1.** Trenches with a width of 20mm to 500mm can be cut in this way (depending on the drive unit).
- 2.** Multiple blades can be fitted for quarrying finished slices of stone.
- 3.** For wider trenches, we recommend using Our ADS series diamond saw, the operator can adjust the saw blade spacing according to their needs on site.



ADJUSTABLE DOUBLE-BLADE SAW

The spacing between two saw blades can be quickly adjusted at the work site

The adjustable double-blade saw design feature of Yichen greatly increases the using flexibility of the saw. It can save users a lot of time and cost. The simultaneous working of double blades brings better work efficiency.



Great flexibility, adjustable spacing



Precise spacing, parallel cuts



Cut rock, reinforced concrete, asphalt, wood, metal, plastic etc.



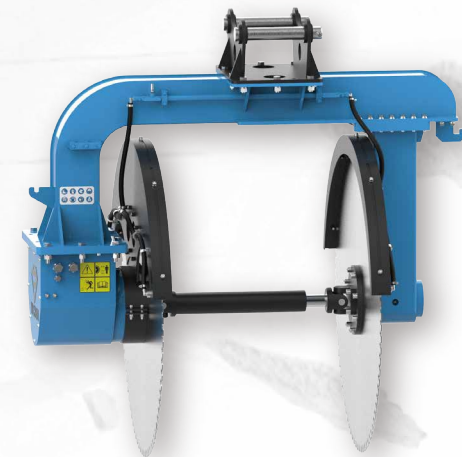
High performance, low maintenance



Standard and custom machines



For all brands and models of excavator



PRODUCT PARAMETERS

Model	Excavator	Max Power Output	Max Pressure	Max Flow	Recommended Flow	Output Shaft Speed	Output Torque	Weight	Saw Blade Spec	Cutting Depth	Distance Between Blades
YS - 15ADS	8-16 ton	59 kw	315 bar	220 lpm	150 lpm @ 160 Bar	428 rpm @150l pm	896 Nm @ 160 bar	950 kgs	Φ1200 mm	400 mm	400-1000mm Adjustable Customizable
YS - 20ADS	15-25 ton	80 kw	315 bar	240 lpm	205 lpm @ 160 Bar	333 rpm @205 lpm	1536 Nm @ 160 bar	1050 kgs	Φ1400 mm	470 mm	
YS - 25ADS	20-45 ton	100 kw	315 bar	300 lpm	255 lpm @ 160 Bar	318 rpm @255 lpm	2048 Nm @ 160 bar	1350 kgs	Φ1600 mm	550 mm	
YS - 30ADS	25-45 ton	120 kw	315 bar	320 lpm	240 lpm @ 200 Bar	300 rpm @240 lpm	2560 Nm @ 200 bar	1850 kgs	Φ1800 mm	630 mm	

*The data provided above is not binding, as the manufacturer reserves itself the right to make improvements to its products at any time and with no advance notice.

TRIPLE-BLADE SAW

Working with three saw blades simultaneously can significantly improve work efficiency

You can also choose to have one or two of the saw blades work, making usage more flexible. The spacing between saw blades and cutting depth can be customized according to the cutting needs. Accurate spacing, parallel and stable cutting. Yichen has equipped each saw blade with a water cooling system.



Multiple cutting with optional working saw blade



High performance, low maintenance



Precise spacing, parallel cuts



Standard and custom machines



Cut rock, reinforced concrete, asphalt, wood, metal, plastic etc.



For all brands and models of excavator



PRODUCT PARAMETERS

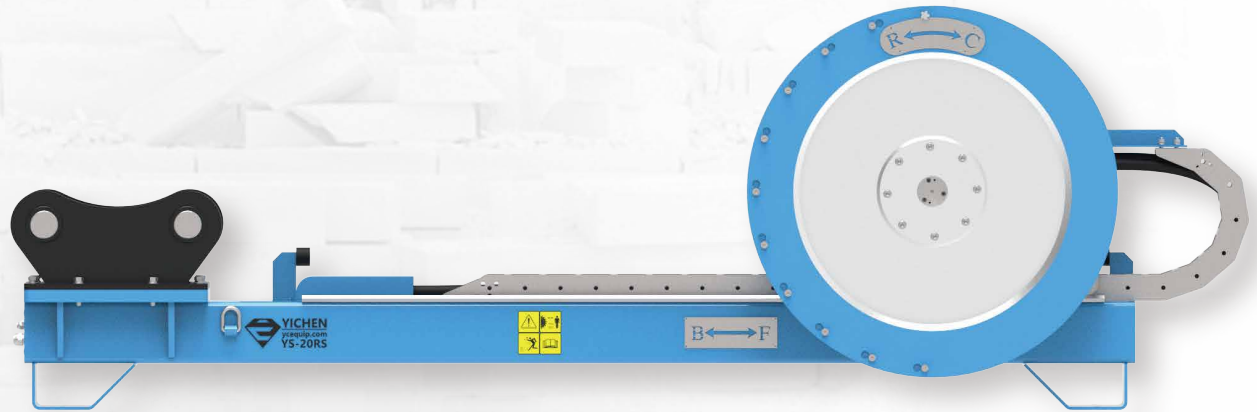
Model	Excavator	Max Power Output	Max Pressure	Max Flow	Recommended Flow	Output Torque	Output Shaft Speed	Weight	Saw Blade Spec	Cutting Depth	Blades Spacing
YS - 20TS	20-45 ton	120 kW	315 bar	320 LPM	240 lpm @ 200bar	2560 Nm @ 200 bar	300 rpm @ 240 Lpm	2000 kgs	Φ1800 mm	630 mm	500 mm (Customizable)

*The data provided above is not binding, as the manufacturer reserves itself the right to make improvements to its products at any time and with no advance notice.

WIRE

Diamond wire is the latest and most interesting innovation in the field of diamond cutting tools.

The diamond wire is now widely used in quarrying, as well as in slabs cutting with single- or multi-wire machines, and in squaring and shaping natural stone (marble and granite).



Low cost on cutting



High performance



Improved surface finish



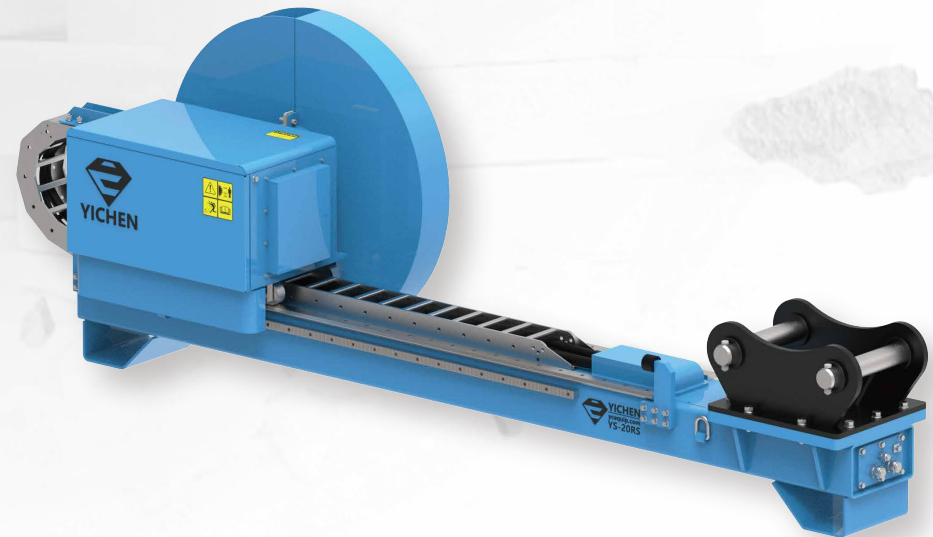
Absence of vibrations



Low noise



Increased cutting precision



PRODUCT PARAMETERS

Model	Excavator	Max Power Output	Max Flow	Recommended Flow	Max Pressure	Output Torque	Output Shaft Speed	Weight	Saw Wire Spec
YS - 20RS	20-45 ton	120 kw	350 lpm	180- 320 lpm	315 bar	3990 Nm@315 bar	0-450 rpm	1050 kgs	Φ11.8 mm

*The data provided above is not binding, as the manufacturer reserves itself the right to make improvements to its products at any time and with no advance notice.

WIRE SAW

DIAMOND WIRE



PULLEY SYSTEM



LARGE OBJECT CUTTING





YICHEN ENVIRONMENT TECH CO., LTD.

No.380, Chunbai Road, Tongjiaosi Industrial Park, Fenghua District, Ningbo, China

WWW.YCATTACHMENTS.COM

Visit us, find our newest products and more.

✉ info@ycattachments.com

☎ +86-0574- 27851020



*The data provided in this guide is not binding, as the manufacturer reserves itself the right to make improvements to its products at any time and with no advance notice.