

MAKE ROCK CRUSHING EASIER



WWW.YCATTACHMENTS.COM

PRODUCT GUIDE

CRUSHER BUCKET



COMPANY PROFILE

Ningbo Yichen Environment Tech Co., Ltd. is specializing in excavator attachments and environmental engineering equipment. The company has continued more than 20 years of experience, integrating scientific research, design and manufacturing.

Our products are exported to dozens of countries such as the United States, Australia, Britain and Southeast Asia, and are widely used in the fields of new and reconstructed highways, airports, tunnels, bridges, heavy engineering infrastructure and so on.

At present, it is a well-known cooperation unit of top 500 enterprises such as State Grid Corporation of China, China Communications Construction, China Railway Construction Corporation, China Railway Group, XuGong Group and Sany group.



INTRODUCTION FEATURES

YICHEN CRUSHER BUCKET is a quality, robust jaw crusher with extremely high throughput with minimal wear costs. It is installed on the excavator and is used for processing natural rock and recycling materials economically on-site in the smallest space and shortest time. We are proud to ensure that all our materials and components are top quality.

High Reliability

Compared with the motor direct drive, Yichen crusher bucket takes a more reliable belt transmission design. The impact and reactive force generated during the crushing process will not be directly transmitted to the motor, therefore protecting and effectively extending the service life of the motor.

Robust And Durable Body

The body is constructed with over 95% NM500 high-performance wear-resistant steel, giving Yichen crusher bucket unparalleled structural strength and wear resistance. It can easily handle harsh operating conditions.

Widest Mouth Opening

Widest feed opening among the same-level crusher buckets on the market (wider than BM Crusher's), with a larger bucket capacity, which allows Yichen crusher bucket to obtain higher productivity and the ability to crush larger materials.

Additional Protection To The Body

In terms of the wear-resistant, Yichen Crusher bucket also designed with replaceable wear-resistant lining plates, providing the most effective protection for the areas of the machine that are most prone to wear, thereby extending the service life of the machine.

High Wear-resistant Jaw Plate

The jaw plate is the most easily worn part of the crusher bucket. Yichen's crusher bucket is equipped with ultra-high manganese steel jaw plates (with a manganese content of up to 18%), which significantly improves the service life of the jaw plates. Moreover, Yichen jaw plate adopts an integrated casting process, its overall structural strength is greatly improved compared with the traditional welded jaw plate structure. The fixed jaw plate and the moving jaw plate can be exchanged for use, and the front and rear of a single jaw plate can also be exchanged to extend its service life.



INTRODUCTION FEATURES

BENEFITS

- Reduce material transportation and handling costs.
- Only 1 excavator and 1 operator are required.
- Replaceable wear-resistant design.
- Reduce the storage cost of landfills and the cost of purchasing new aggregates.
- Reduce environmental pollution.

Centralized Greasing System

It can realize the simultaneous lubrication of multiple lubrication points inside the crusher bucket through a one-time operation.

High Performance

Yichen crusher bucket has a high-performance axial piston motor, which enables the jaw plate to have greater biting force, makes Yichen crusher bucket have higher productivity and the ability to crush harder materials.

Standard With Dust Suppression System

YICHEN crusher bucket series product comes with equipped dust suppression system, which can be used as long as the water pipe is connected, and is more conducive to promoting environmental protection operations.

Adjustable Output

Adjustable output size from 15mm to 145mm (Max.*). Only one operator is required to adjust the output size on site within 10 minutes.

**The adjustable range of the output size varies according to the model. Please refer to the product specification sheet for details.*

Quick And Easy Maintenance

The optimized structural design and part layout make Yichen crusher bucket quick and easy to maintain and repair.



INTRODUCTION SPECIFICATIONS

Model	Unit	YC-05	YC-10	YC-20	YC-25	YC-30	YC-40
Excavator	Ton lbs	6-12 13000-24000	10-18 22000-40000	16-25 35000-55000	16-26 35000-57000	20-30 44000-66000	30-45 66000-99000
Capacity	m ³ ft ³	0.27 9.5	0.58 20.5	0.72 25.4	0.83 29.3	0.95 33.5	1.5 52.9
Throat Width	mm inch	610 24.1	650 25.7	798 31.5	798 31.5	920 36.2	1210 47.7
Throat Height	mm inch	350 13.8	510 20.1	510 20.1	550 21.7	550 21.7	550 21.7
Output Size	mm inch	15-100 0.6-3.9	15-130 0.6-5.2	15-130 0.6-5.2	15-130 0.6-5.2	15-140 0.6-5.6	15-145 0.6-5.7
Rec. Flow	l/min gpm	70-130 18.5-34.3	90-140 23.8-36.9	150-220 39.6-58.1	150-220 39.6-58.124	180-240 47.6-63.4	150-265 39.6-70.1
Weight	Kg lbs	840 1848	1740 3828	2290 5038	2490 5478	3000 6600	4500 9900
Size (L x W x H)	mm inch	1550x900x829 61x35.4x32.6	1900x1034x1284 74.8x40.7x50.6	2095x1182x1284 82.5x46.5x50.6	2230x1182x1335 87.8x46.5x52.6	2230x1304x1335 87.8x51.3x52.6	2330x1600x1440 91.7x93x56.7

PERFORMANCE

CRUSHING OUTPUT	mm	YC-05	YC-10	YC-20	YC-25	YC-30	YC-40
	145					m ³ /h	54.2
	140		m ³ /h	m ³ /h	m ³ /h	43.1	51.5
	130		24.2	32.8	34.8	40.7	48.6
	120		22.7	30.8	32.7	38.3	45.7
	110	m ³ /h	21.3	28.8	30.6	35.9	42.8
	100	16.1	19.9	26.8	28.5	33.5	39.9
	90	14.9	18.5	24.8	26.4	31.1	37.1
	80	13.7	17.1	22.7	24.2	28.6	34.2
	70	12.5	15.6	20.7	22.1	26.2	31.3
	60	11.3	14.2	18.7	19.9	23.8	28.4
	50	10.1	12.8	16.7	17.8	21.4	25.5
	40	8.9	11.4	14.6	15.6	19	22.6
	30	7.7	10	12.6	13.4	16.6	19.8
	20	6.5	8.5	10.6	11.2	14.2	16.9
	15	5.8	7.7	9.6	10.1	12.9	15.5

* The production capacities vary based on material, feed size and output size. Indicated capacities based on medium hard material crushed under optimal conditions.



INTRODUCTION APPLICATION DISPLAY

- Demolition work, construction work, civil engineering, road work, mining, dredging, rock work, municipal waste disposal, recycling and reuse and other fields of crushing work.
- The crushing and recycling of construction waste such as concrete, bricks, asphalt concrete, ceramics, glass, etc.
- Crushing work of railway cement sleepers, cement poles, various bridge pier piles, etc.



JOBSITE



QUARRIES



ROADWORKS



SAND PRODUCTION



DEMOLITION



RECYCLING

- The processing of natural stone in quarries, mines, gravel pits, river pebble pits, etc.
- Sand making (using Yichen's special fine-tooth jaws) to meet the needs of construction materials in areas lacking sand.
- Pavement construction and earthwork, excavation engineering, forest road construction, on-site crushing and processing of aggregates, etc.

INTRODUCTION APPLICATION CASES



Construction waste crushing



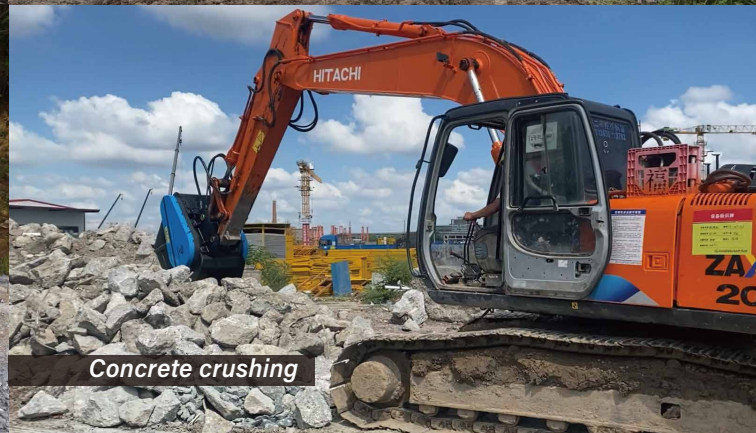
Concrete crushing



Natural ore crushing



Quarrying



Concrete crushing



Natural ore crushing

BEFORE/AFTER

THE CRUSHING EFFECT OF YICHEN CRUSHER BUCKET FOR DIFFERENT MATERIALS

Yichen crusher bucket allows you to directly convert waste at the job site to realize the recycling of materials.



MATERIALS SUITABLE FOR CRUSHING

Construction waste:

Such as concrete blocks, bricks, asphalt pavement, etc.

Ores and rocks:

Hard materials like ores and rocks in mining operations.

Demolition waste:

Concrete components, stone materials, etc., from dismantled buildings.

Industrial waste slag:

Lumpy waste slag generated in metallurgical, chemical, and other industries.

Other hard materials:

Such as ceramics, glass (requiring special design), etc.

CONCRETE



BRICK



STONE



ASPHALT



INTRODUCTION

IRON SEPARATOR

(OPTIONAL)

Designed to be installed on Yichen crusher bucket. It can convert electric power into magnetic attraction force, to separate the rebar from the crushed concrete. Reduce labor costs.

Base Machine Power Supply

The iron separator only needs to use the 24V power supply on the base machine to work, and there is no need to equip an external power supply.

Strong Magnetic Attraction

Large magnetic attraction. Instantaneous adsorption and release. It can firmly adsorb at least 50 kg of steel.

Quick Separation

The unique design of the quick-release interface allows operators to quickly separate or reconnect the Yichen crusher bucket equipped with the iron separator from the base machine with simple operations.

Robust Housing

It adopts the same high-performance wear-resistant steel as the body of Yichen crusher bucket, which is suitable for various harsh operating environments.

Easy To Operate

Robust and wear-resistant housing. The same high-performance wear-resistant steel is used as the body of Yichen crusher bucket, so that the electromagnet can cope with the harsh use environment.

Integrated Design

Integrated design of the electric control, which does not need to occupy the limited space of the base machine cab.



INTRODUCTION

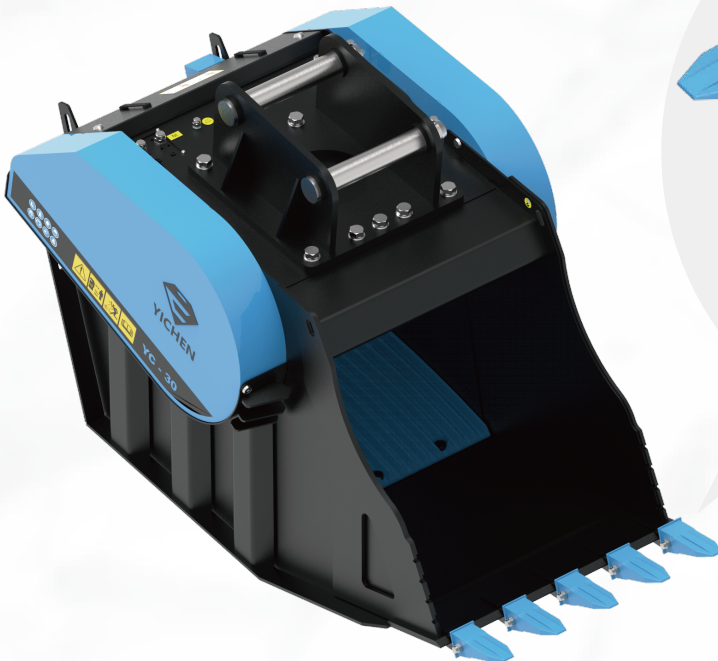
EXCAVATION TEETH

(OPTIONAL)

When dealing with high-hardness rocks or construction waste containing steel bars and metal parts, attaching excavation teeth to the crusher bucket can prevent premature wear of the bucket body.

Technique

Compared with cast teeth, Yichen crusher bucket uses forged teeth, which have better mechanical properties, can withstand greater impact and friction forces, and are less prone to fracture due to instantaneous impact.



Material

The excavation teeth are made of high-manganese steel, with a hardness of HB200-500, which significantly improves the impact and wear resistance of the crusher bucket. The surface of the excavation teeth undergoes quenching and carburizing processes to strengthen the hardness of the tooth tips, forming a "hard exterior and tough interior" structure, which optimizes both crack resistance and wear resistance. Compared with ordinary bucket teeth, the wear-resistant life can be extended by 30%-80% (specifically subject to the working conditions).



Installation

The bolt-fixed type is convenient to install, allowing quick replacement of individual teeth without disassembling the entire bucket, saving maintenance time. It is equipped with anti-loosening bolts, double-safety retaining rings, etc., to prevent safety hazards caused by bucket teeth flying out during operation.

INTRODUCTION

VIBRATION ACTIVATED HOUR METER

(OPTIONAL)

Vibration Activated Hour Meter that turns on or off by sensing vibration from the crusher bucket. Get an automatic digital timer that requires no manual switch.

Clear LCD display, easy to read.

The hour meter is completely waterproof.

*Vibration start, the hour meter start,
vibration stop, the hour meter stop.*



low voltage design, built-in lifetime battery power supply, safe and durable.

The sensitivity is adjustable and can adapt to different working conditions.

There is a special installation position for the hour meter on Yichen crusher bucket

INTRODUCTION

SPARE PARTS KIT

(OPTIONAL)

For the repair of parts of the crusher bucket or the replacement of worn parts. Yichen prepares spare kits for each model of its crusher buckets. Buying kit is considerably less expensive than purchasing each part separately.

Worn parts replacement kit

Including moving jaw plate, fixed jaw plate, timing belt, toggle plate, lining plates, and related hardware.

Motor replacement kit

Including motor, motor seat, seals, and related hardware.

INTRODUCTION

WARRANTY EXTENSION

(OPTIONAL)

After purchasing this service, Yichen will provide an additional one-year warranty for the crusher bucket that the customer has purchased.





YICHEN ENVIRONMENT TECH CO., LTD.

*No.380, Chunbai Road, Tongjiaosi Industrial Park,
Fenghua District, Ningbo, China*

 info@ycattachments.com

 **+86-0574- 27851020**



*The data provided in this guide is not binding, as the manufacturer reserves itself the right to make improvements to its products at any time and with no advance notice.