

EXCAVATOR ATTACHMENTS

# PRODUCT CATALOG



## COMPANY PROFILE



## COMPANY NAME

Ningbo Yichen Environmental Technology Co., Ltd. referred to as "Yichen", formerly known as Ningbo ANT Heavy Industry Technology Co., Ltd., was officially renamed in November 2020. It is a one-stop service provider for all environmental engineering equipment solutions. Products are widely used in new/reconstructed roads, airports, tunnels, bridges, heavy engineering infrastructure and other fields, providing a strong guarantee for municipal construction, transportation, water conservancy and other urban construction.

MAKE YOUR EXCAVATOR VERSATILE





## TECHNICAL STRENGTH

The company integrates technology research and development, manufacturing, construction guidance, and after-sales service, and has won 20 national patents.

The products are exported to dozens of countries including the United States, Australia, Britain, Southeast Asia and so on. Provide products and technical services for more than ten Fortune 500 companies such as China Communications Construction, China Railway Construction, China Railway, Xugong Group, Sany Group, etc.

## PRODUCT LINES

With nearly two decades of experience in the development of excavator attachments and solid material handling equipment production. At present, the company has six product series, including earth drill (auger drive, auger, helical pier and torque indicator), drum cutter, rock saw, crusher bucket and screening bucket. In 2015, the company completed the design and development of soil stabilization system and put it into the market. The successful development of the system makes Yichen the first in-situ soil solidification and remediation system using a more environmentally friendly slurry solidification agent in the world.

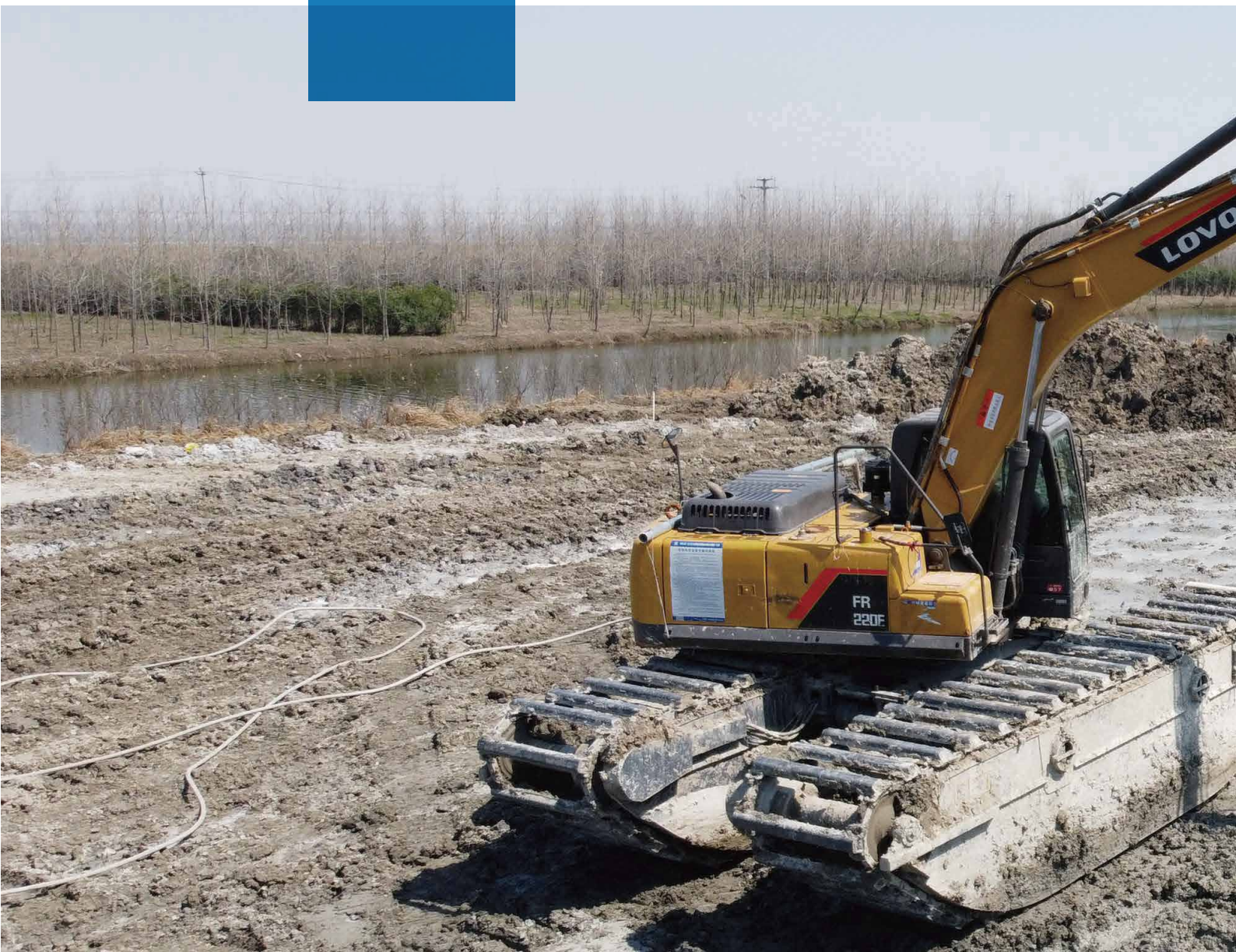




# CONTENTS

**01 / 04** SOIL STABILIZATION SYSTEM SERIES

**05 / 10** EARTH DRILL SERIES



Welcome



# WELCOME

**11 / 17** DRUM CUTTER SERIES

**21 / 22** CRUSHER BUCKET SERIES

**18 / 20** ROCK SAW SERIES

**23 / 24** SCREENING BUCKET SERIES



Welcome



# SOIL STABILIZATION SYSTEM SERIES >>>



## PRODUCT INTRODUCTION

Soil stabilization system we also call it as soft soil in situ solidification and remediation system is a new construction scheme that uses soil solidifying agent to directly act on soft soil (such as sludge, sludge, beach, swamp, etc.) to solidify soft soil in situ to form a composite stable base.

The system is composed of storage bins, an control center and one or two power mixers. Combined with large and medium-sized excavators, the soil solidifying agent is directly transported to the soft soil which need to be solidified, evenly mixed and stirred to form a semi-rigid stabilized soil material.



Power Mixer



Storage Bin



Control Center

Bay after solidification ▲

Bay before solidification ►







## WORKING PRINCIPLE

Soil Stabilization System achieves the effect of solidification and remediation through the physical and chemical reaction between solidifying agent and soft soil. The storage bin is stocked with solidifying agent raw materials, such as dry powder cement, ore powder, fly ash, etc. The control center is responsible for mixing and stirring the solidifying agent according to the set proportion and delivering it to the power mixer at the front end of the excavator at a certain pressure and rate.

The power mixer causes the solidifying agent to mix and combine with the soft soil at a certain rotation speed and temperature to fix a large amount of free water in the soil in the form of crystalline water. After the soil solidifying agent is mixed with the soft soil, the engineering properties of the soil are changed through a series of physical and chemical reactions, the particles tend to agglomerate, the electrolyte concentration is enhanced, and the volume expands to further fill the soil pores. Under the action of compaction, the overall structure is formed, so that the solidified soil is easy to compact and stable, reaches the compactness that can not be achieved by conventional methods, improves its strength, shear strength and other properties, and meets the technical requirements of road construction.

## PRODUCT APPLICATION

- **Construction of roadbed:** the settlement and deformation of the base layer of the highway, after excavating the surface layer, the soft mud of the foundation is hardened about 1 meter deep, so as to complete the repair of the roadbed.
- **Site hardening:** hardening treatment of parking lots, stockyards for material or goods, drilling well sites, production and processing plants, etc.
- **Anti-sedimentation and solidification of pipe corridors and ditches:** when the pipeline construction passes through the silt land, there is no need to excavate the silt out and transport it to elsewhere, just solidify and then excavate, finally backfill the solidified soil.
- **Solidification of marshland:** solidification of marshland to build constructable land, build large factories, no need to excavate and transport the sludge, just solidify and reuse sludge on site.
- **River bed solidification:** After solidifying the river bed silt, then leveled it to build a beautiful river.
- **Bridge and tunnel:** The surface foundation solidification of the bridge, and the tunnel sludge is solidified and then excavated as a filling material.
- **Solidification in the landfill:** The landfill has accumulated various corrosive substances such as sludge, oil and plastic for a long time, we can built a park on it after solidification and burying.
- **Remediation and improvement of heavy metal contaminated soil:** soil heavy metal stabilization, engineering remediation of contaminated soil, vegetation restoration, and reduction of the potential dangers of heavy metals in contaminated soil to the ecological environment and human health.
- **Contaminated soil remediation and acid-base neutralization:** soil heavy metal content exceeds the standard and is alkaline, and acid-base neutralization is carried out through our soil stabilization system equipment.



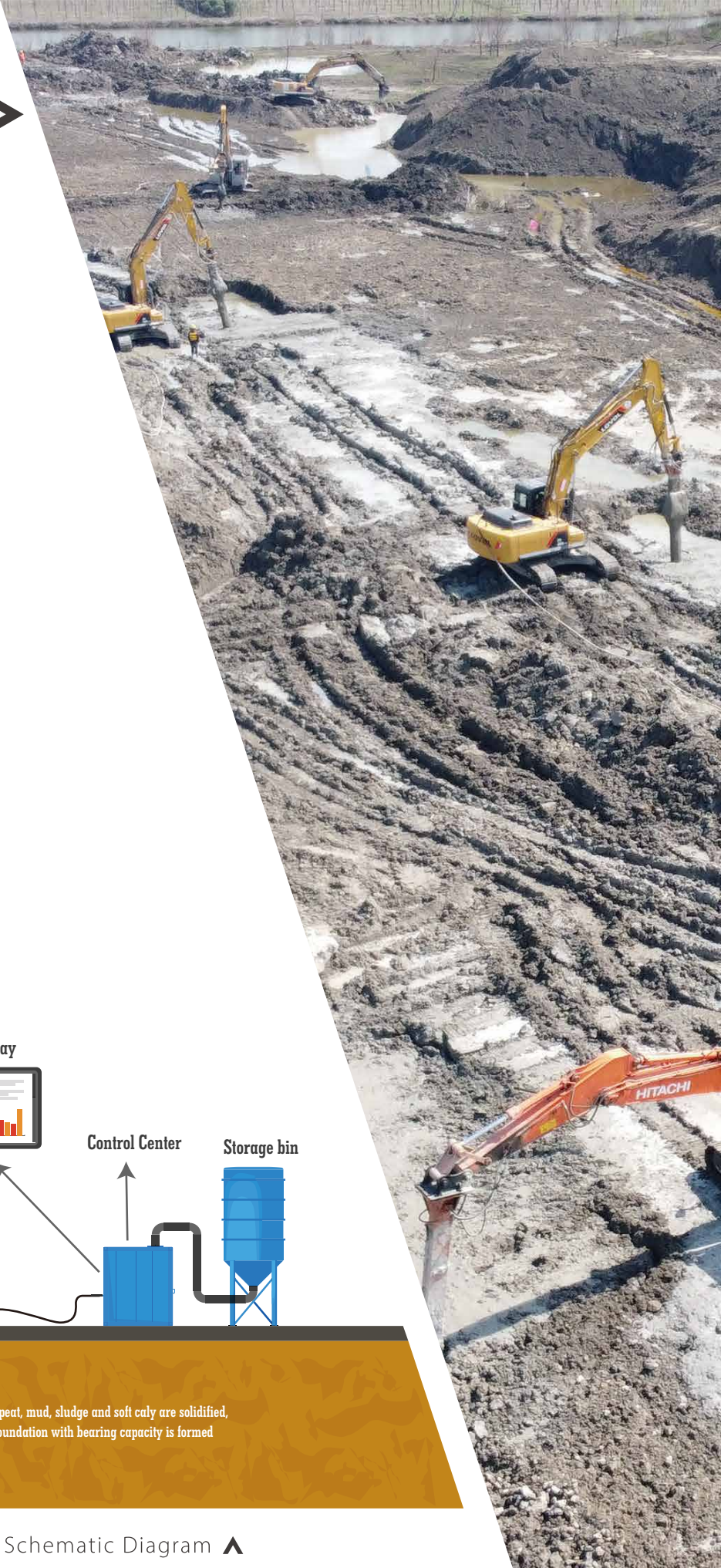
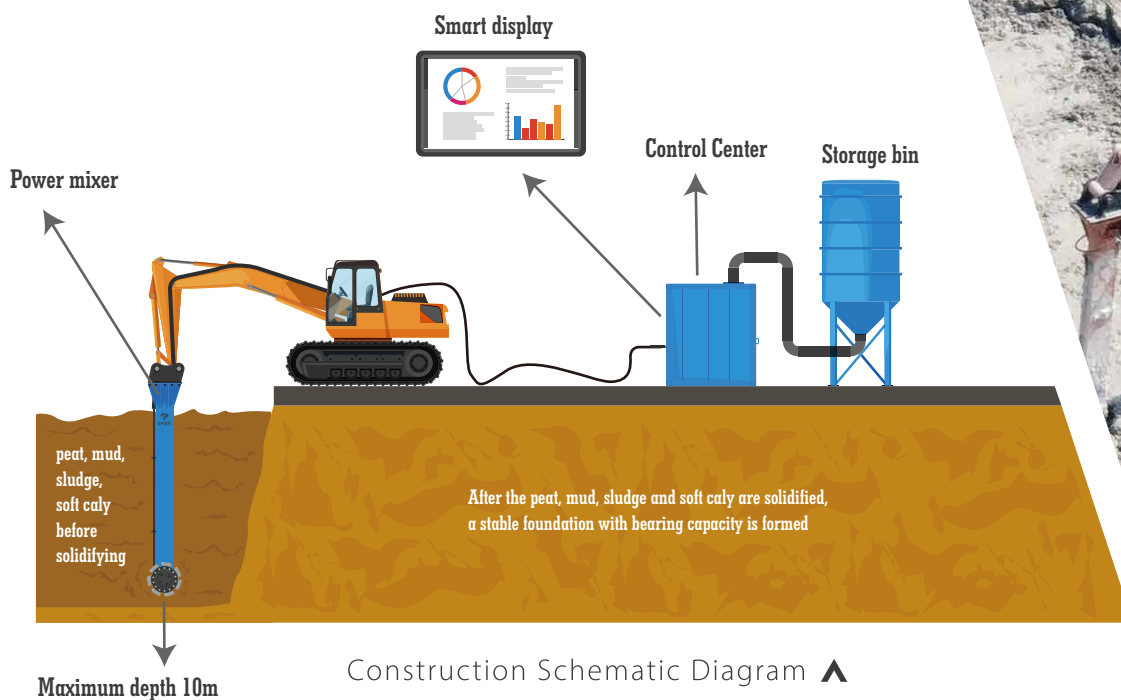




## ADVANTAGES

The soil stabilization system developed by Yichen Environmental has created a new concept, overturned the requirements of traditional equipment for the jobsite, realized in-situ treatment, reduced the difficulty of engineering construction, and improved the treatment efficiency and effect. The composite stabilized soil formed after in-situ solidification of soft soil can obtain local materials and turn waste into treasure, which has many advantages:

- The solidifying capacity of a single system can reach 1600 cubic meters a day (8-10 hours).
- The solidifying operation depth can reach 11 meters.
- Different mixing blades can be selected to meet the operation requirements of sludge with different water content levels.
- The conveying of solidifying agent is controlled by full-automatic computer.
- Use slurry solidifying agent technology, no dust, more environmental protection, more uniform mixing, better permeability and more accurate measurability.
- In situ solidification, low construction cost.
- Rapid solidifying process. A stable foundation with bearing capacity can be formed in 3-5 hours.
- Can be used for contaminated soil remediation.





# POWER MIXER

## INTRODUCE

The mixing head is the execution part of the soil stabilization system, which realizes mixing and stirs the soil stabilizer together with the soil to form a stable foundation.

The mixing head is the execution device of the entire soft soil in-situ solidification and repair system. It adopts a streamlined frame design, preferably steel, with lighter weight and higher strength. The mixing head is powered by the hydraulic system of the excavator, and the excavator's flexible mobility can be used to enter various difficult or soft sites for operation. The Yichen mixing head can mix and mix anywhere the excavator can travel.

### PRODUCT PARAMETER (SPECIFICATION)

Item	Power Mixer				Unit
	YM-VF200	YM-VF300	YM-TF200	YM-TF300	
Excavator	20-36	25-40	20-30	30-40	ton
Mixing Width	1280	1280	880	880	mm
Mixing Depth	0-10	0-11	0-7	0-10	m
Mixer Extensions	2-5	2-6	2-5	2-6	m
Total Power	160	210	125	210	kw
Rotation Feedback	yes	yes	yes	yes	/
Weight	2300	2600	2300	2500	kgs
Oil Flow	200-350	250-400	200-300	250-400	lpm
Oil Pressure	180-350	180-350	180-300	180-350	bar



YM-VF



TM-TF





# EARTH DRILL SERIES >>>

## APPLICATIONS

---

- ▶ Fence piling
- ▶ Landscaping
- ▶ Tree planting
- ▶ Well boring
- ▶ Foundation piles
- ▶ Rod and mast installation
- ▶ Screw pile installations
- ▶ Ground source heat pumps
- ▶ Pole and mast installations
- ▶ Road signage
- ▶ Sound barriers
- ▶ Exploration and research
- ▶ Solar energy equipment installation
- ▶ Wind turbine installation





# AUGER DRIVE

## FEATURES & BENEFITS

Yichen auger drive YA series is a drilling device that powered by excavator or skid steer loader hydraulic system to drive a earth auger or helical pile into the ground. Manufactured from high grade materials and precision engineered components.

Designed to withstand extreme working conditions. High grade synthetic gear oil used for extra protection and long service life. The series has a variety of specifications and accessories to meet different operating need.



## PRODUCT PARAMETER (SPECIFICATION)

Model	Excavator	Max. Output Torque	Pressure	Oil Flow	Output Shaft Speed	Weight	Overall Length	Hydraulic Hose	Output Shaft Size		
YA - 1000	0.5-2 ton	1000 Nm	150- 170 Bar	70 LPM	30- 95 RPM	35 kgs	550 mm	1/2"BSP	65mm round	/	/
YA - 2000	0.5-2 ton	1900 Nm	70- 240 Bar	27- 75 LPM	30- 95 RPM	41 kgs	606 mm	1/2"BSP	65mm round	2" hex	57mm square
YA - 3000	1-3 ton	3000 Nm	70- 240 Bar	27- 75 LPM	35- 88 RPM	41 kgs	606 mm	1/2"BSP	65mm round	2" hex	57mm square
YA - 5000	3-4.5 ton	5000 Nm	80- 240 Bar	50- 95 LPM	42- 80 RPM	66 kgs	687 mm	1/2"BSP	65mm round	2" hex	57mm square
YA - 8000	4.5-8 ton	8000 Nm	80- 260 Bar	60- 135 LPM	35- 80 RPM	124 kgs	808 mm	1/2" BSP(or 3/4" BSP)	/	2.5" hex	75mm square
YA - 10000	5-10 ton	10000 Nm	80- 260 Bar	60-135 LPM	35- 80 RPM	131 kgs	808 mm	1/2" BSP(or 3/4" BSP)	/	2.5" hex	75mm square
YA - 18000	8-15 ton	18000 Nm	80- 240 Bar	80- 170 LPM	20- 42 RPM	165 kgs	937 mm	3/4"BSP	/	/	75mm square
YA - 30000	15-22 ton	30000 Nm	160-260 Bar	80-170 LPM	12-28 RPM	255 kgs	1158 mm	1"BSP	/	/	75mm square
YA - 50000	20-36 ton	50000 Nm	220-350 Bar	100-300 LPM	0-30 RPM	460 kgs	1354 mm	1"BSP 1-1/4"	/	/	110mm square
YA - 80000	26-40 ton	80000 Nm	220-350 Bar	200-400 LPM	0-20 RPM	770 kgs	1572 mm	SAE FS- 20 1- 1/4"	/	/	110mm square
YA - 110000	20-40 ton	111800 Nm	180-260 Bar	200-300 LPM	0-10 RPM	1050 kgs	1500 mm	SAE FS- 20 G1- 1/4"	/	/	160mm square
YA - 130000	20-40 ton	130520 Nm	180-250 Bar	240-320 LPM	0-10 RPM	1250 kgs	1600 mm	SAE FS- 20 G1- 1/4"	/	/	160mm square
YA - 180000	30-50 ton	180000 Nm	180-240 Bar	300-420 LPM	0-9 RPM	1450 kgs	1600 mm	SAE FS- 20 G1- 1/4"	/	/	160mm square

Please note that the maximum flow and pressure cannot be met at the same time, please consult your supplier or Yichen company before use.



## W2 EARTH AUGERS (EARTH/ CLAY/ SHALES)



### ALL PURPOSE EARTH AUGER FOR GENERAL DRILLING

Efficient and cost effective auger for general purpose drilling in earth, clay, shale and soft rocks. Multi-faced tungsten providing longer wear life and greater cutting performance.

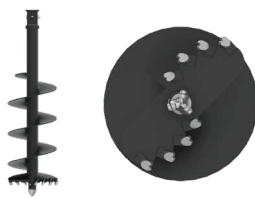


A0P2 PILOT



A0T2 TEETH

## W3 COMBINATION AUGER (ALL GROUND CONDITIONS)



### TAPER TEETH DESIGN THE ULTIMATE ALL PERFORMANCE AUGER

The angle and geometry of the teeth to the pilot is the key to the efficiency in which these augers perform. This auger is fitted with Tungsten Taper Teeth for the ultimate ripping ability in fracturable rock, permafrost and general earth conditions.



A0P3 PILOT



A0T3 TEETH

## W4 ROCK AUGER (CONCRETE/ SHALE/ FRACTURABLE ROCK)



### HEAVY DUTY AUGER FOR DEDICATED ROCK DRILLING

YICHEN Rock augers - heavy duty engineered design, with high efficiency cutting heads to maximize your rock drilling performance. Fitted with a range of quality wear parts providing superior wear and performance.



A0P4 PILOT



A0T4 TEETH

## FEATURES & BENEFITS

Yichen auger series are designed for different earth conditions and applications. Manufactured from high quality EN series gear steel and the latest processing technology, makes our auger more durable and wear-resistant. The diameter range is from 150mm to 2000mm. Shallow pitch flight design ensures earth moving efficiency. Forged Tungsten auger teeth and pilot ensures the toughness and drilling accuracy.

## PRODUCT PARAMETER (SPECIFICATION)

Auger YA - 1000	Diameter(mm)		150	200	250	300	/	/	/	/	/	/	/	/	/
	Drilling Depth (m)	Soft	3.5	3.0	2.5	2.5	/	/	/	/	/	/	/	/	/
		Medium	3.5	3.0	2.4	2.4	/	/	/	/	/	/	/	/	/
		Hard	3.0	3.0	2.2	2.2	/	/	/	/	/	/	/	/	/
Auger YA - 2000	Diameter(mm)		150	200	250	300	350	400	/	/	/	/	/	/	/
	Drilling Depth (m)	Soft	3.5	3.0	2.5	2.5	2.4	2.0	/	/	/	/	/	/	/
		Medium	3.5	3.0	2.4	2.4	2.2	1.8	/	/	/	/	/	/	/
		Hard	3.0	3.0	2.2	2.2	2.0	1.5	/	/	/	/	/	/	/
Auger YA - 3000	Diameter(mm)		150	200	250	300	350	400	450	500	/	/	/	/	/
	Drilling Depth (m)	Soft	3.5	3.0	2.5	2.5	2.4	2.0	1.7	1.5	/	/	/	/	/
		Medium	3.5	3.0	2.4	2.4	2.2	1.8	1.6	1.4	/	/	/	/	/
		Hard	3.0	3.0	2.2	2.2	2.0	1.5	1.5	1.3	/	/	/	/	/
Auger YA - 5000	Diameter(mm)		150-600	650	700	750	800	850	900	/	/	/	/	/	/
	Drilling Depth (m)	Soft	4.5	3.2	3.0	2.6	2.0	1.7	1.5	/	/	/	/	/	/
		Medium	4.2	3.7	2.8	2.4	1.8	1.6	1.3	/	/	/	/	/	/
		Hard	3.5	3.3	2.5	2.1	1.7	1.4	1.2	/	/	/	/	/	/
Auger YA - 8000	Diameter(mm)		150-500	550	600	650	700	750	800	850	900	/	/	/	/
	Drilling Depth (m)	Soft	6.5	4.5	4.0	4.0	4.0	3.6	3.0	2.6	2.5	/	/	/	/
		Medium	5.5	4.5	3.7	3.7	3.7	3.5	2.8	2.7	2.2	/	/	/	/
		Hard	5.0	3.5	3.5	3.5	3.2	3.0	2.4	2.4	2.0	/	/	/	/
Auger YA - 10000	Diameter(mm)		150-500	550	600	650	700	750	800	850	900	1000	/	/	/
	Drilling Depth (m)	Soft	6.5	4.5	4.0	4.0	4.0	3.6	3.0	2.6	2.5	2.3	/	/	/
		Medium	5.5	4.5	3.7	3.7	3.7	3.5	2.8	2.7	2.2	1.9	/	/	/
		Hard	5.0	3.5	3.5	3.5	3.2	3.0	2.4	2.4	2.0	1.5	/	/	/
Auger YA - 18000	Diameter(mm)		150-400	500	600	650	700	750	800	850	900	950	1000	1100	1200
	Drilling Depth (m)	Soft	8.6	7.2	7.1	7.0	6.5	6.1	6.0	5.7	5.5	5.3	5.0	4.7	4.5
		Medium	7.6	6.4	6.4	6.2	5.8	5.4	5.3	5.2	5.0	4.6	4.5	4.2	4.0
		Hard	7.0	5.8	5.7	5.5	5.4	5.0	4.8	4.6	4.6	4.3	4.2	4.0	3.7
Auger YA - 30000	Diameter(mm)		150-400	450	500	550	600	650	700	800	900	1000	1100	1200	1500
	Drilling Depth (m)	Soft	9.0	8.6	8.6	8.6	8.6	8.4	8.0	7.6	7.0	6.5	6.3	6.0	5.0
		Medium	8.2	7.7	7.7	7.7	7.7	7.5	7.3	6.8	6.3	6.0	5.7	5.5	4.6
		Hard	7.3	7.0	7.0	7.0	7.0	6.8	6.6	6.2	5.7	5.3	5.0	4.8	4.0
Auger YA - 50000	Diameter(mm)		300-450	500	550	600	650	700	800	900	1000	1100	1200	1500	1800
	Drilling Depth (m)	Soft	12	12	11	11	11	10	9	9	8	8	7	6	4
		Medium	11	11	10	10	10	9	7	7	6	6	5	5	3.3
		Hard	8	8	7	7	7	7	6	6	5	5	5	4	2.5



Auger YA - 80000	Diameter(mm)		300-600	700	800	900	1000	1100	1200	1500	1800	2000	/	/	/
	Drilling Depth (m)	Soft	15	14	14	14	12	12	10	8	8	7	/	/	/
		Medium	11	10	10	10	9	9	8	7	7	6	/	/	/
		Hard	8	7	7	7	7	7	6	6	6	5	/	/	/
Auger YA - 110000	Diameter(mm)		450-600	700	800	900	1000	1100	1200	1500	1800	2000	/	/	/
	Drilling Depth (m)	Soft	19	18	18	18	16	16	14	12	12	11	/	/	/
		Medium	14	13	13	13	13	13	11	10	10	9	/	/	/
		Hard	10	9	9	9	9	9	8	8	8	7	/	/	/
Auger YA - 130000	Diameter(mm)		450-600	700	800	900	1000	1100	1200	1500	1800	2000	/	/	/
	Drilling Depth (m)	Soft	22	21	21	21	19	19	17	15	15	14	/	/	/
		Medium	16	15	15	15	15	15	13	12	12	11	/	/	/
		Hard	11	10	10	10	10	10	9	9	9	8	/	/	/
Auger YA - 180000	Diameter(mm)		450-600	700	800	900	1000	1100	1200	1500	1800	2000	/	/	/
	Drilling Depth (m)	Soft	27	26	26	26	24	24	22	20	20	19	/	/	/
		Medium	20	19	19	19	19	19	17	16	16	15	/	/	/
		Hard	14	13	13	13	13	13	12	12	12	11	/	/	/

## TOOL



### LOG SPLITTER

The Yichen Log Splitter makes the job simple and efficient, and it can quickly dispose of fallen trees into manageable pieces.



### CEMENT MIXER BOWL

Used to stir small amounts of cement and can be quickly disassembled and installed.



### HOLE CLEANER

Hole Cleaners are used to remove spoil from holes after drilling to create a clean and flattened base.



### CORE BARREL

Bucket drills are used for drilling very hard rock.



### STUMP PLANER

Yichen Stump Planer allows you to easily complete the tree stump cleaning work.

## HITCH



Single Pin Hitch



Double Pin Hitch



Double Pin  
Cradle Hitch



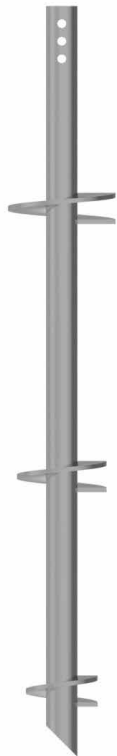
Skid Steer Frame

## EXTENSION



Auger Extension  
(Customizable)

# HELICAL PILES



## FEATURES & BENEFITS

- Cost Effective
- No Curing Time
- Can be battered
- Quick Installation
- Proven Engineering
- Environmental Friendly
- Installation in All Weather Conditions
- Re-Usable
- Vibration Free
- Low Construction Noise
- Removable for Temporary Structures
- Can Be Grouted After Installation
- Resist Corrosion Through Galvanization

## APPLICATION

Pole bases and communication towers, utility and pipeline tie downs, tiebacks and wall anchors, deep foundation Piers for new construction, underpinning commercial and residential structures, boardwalks, bulkheads, sea walls, temporary and reusable wall anchors, slope stabilization, concrete slab lifting and stabilization, shoring, and concrete-less foundations. A helical pile can be used in nearly any situation and where driven or cast in place piles are currently used.

## PRODUCT PARAMETER (SPECIFICATION)

### A18

SPECIFICATIONS	
Shaft	2.875" x 0.217" Nominal
Bolts	0.875"
Helices	0.375" Thick, Helix Die-Pressed 8", 10", 12", 14" & 16" Diameter Available
Spacing 'D'	24", 30", 36"
Pitch	3"
Coating	Galvanized (G), Bare Steel (NG), Epoxy Powder Coated (EP)
PROPERTIES	
9 ft-l	Ultimate Capacity-to-Torque Ratio
8,800 ft-lbs	Maximum Installation Torque
CAPACITY BY TORQUE	
36 Tons	Ultimate Capacity
18 Tons	Allowable Capacity
STRUCTURAL CAPACITY	
44 Tons	Ultimate Capacity
22 Tons	Allowable Capacity

### A22

SPECIFICATIONS	
Shaft	3.5" x 0.3" Nominal
Bolts	0.875"
Helices	0.5" Thick, Helix Die-Pressed 8", 10", 12", 14" & 16" Diameter Available
Spacing 'D'	30", 36", 42"
Pitch	3"
Coating	Galvanized (G), Bare Steel (NG), Epoxy Powder Coated (EP)
PROPERTIES	
9 ft-l	Ultimate Capacity-to-Torque Ratio
13,500 ft-lbs	Maximum Installation Torque
CAPACITY BY TORQUE	
44 Tons	Ultimate Capacity
22 Tons	Allowable Capacity
STRUCTURAL CAPACITY	
72 Tons	Ultimate Capacity
36 Tons	Allowable Capacity



## A36

SPECIFICATIONS	
Shaft	4.5" x 0.337" Nominal
Bolts	1"
Helices	0.5" Thick, Helix Die-Pressed 10", 12", 14" & 16" Diameter Available
Spacing 'D'	30", 36", 42", 48"
Pitch	3"
Coating	Galvanized (G), Bare Steel (NG), Epoxy Powder Coated (EP)
PROPERTIES	
9 ft-1	Ultimate Capacity-to-Torque Ratio
28,000 ft-lbs	Maximum Installation Torque
CAPACITY BY TORQUE	
72 Tons	Ultimate Capacity
36 Tons	Allowable Capacity
STRUCTURAL CAPACITY	
108 Tons	Ultimate Capacity
54 Tons	Allowable Capacity

## A46

SPECIFICATIONS	
Shaft	5.5" x 0.361" Nominal
Bolts	1"
Helices	0.5" Thick, Helix Die-Pressed 10", 12", 14" & 16" Diameter Available
Spacing 'D'	30", 36", 42", 48"
Pitch	3"
Coating	Galvanized (G), Bare Steel (NG), Epoxy Powder Coated (EP)
PROPERTIES	
9 ft-1	Ultimate Capacity-to-Torque Ratio
44,000 ft-lbs	Maximum Installation Torque
CAPACITY BY TORQUE	
92 Tons	Ultimate Capacity
46 Tons	Allowable Capacity
STRUCTURAL CAPACITY	
144 Tons	Ultimate Capacity
72 Tons	Allowable Capacity



# DRUM CUTTER SERIES >>>

## FEATURES & BENEFITS

Yichen drum cutter series designed to accurately remove material from rock or concrete surfaces with low noise level and less vibration. High torque hydraulic motor and optimized pick pattern for higher productivity. Extremely robust with low maintenance due to massive drive shaft bearing and heavy duty sealing system. Fast and easy exchange of wear parts reduces downtimes.

Optional 360° Rotation: rotation of the cutter allows exact positioning in corners, on walls and other vertical surfaces for more accurate contouring. Small particles excavated by designed pick, can be directly used as filler. Strong housing design with wear resistant material for higher product service life.

Horizontal Drum Cutter ▲



Vertical Drum Cutter ►





## APPLICATIONS

- ▶ Excavation and profiling of walls
- ▶ Demolition or excavation of concrete structures
- ▶ Cleaning of damaged cement or asphalt pavements
- ▶ Excavation or treatment of pipeline trenches
- ▶ Cleaning or dismantling of damaged facilities
- ▶ Open-pit coal mining
- ▶ Underground scaling
- ▶ Rock excavation in mine or quarry



# TRANSVERSE DRUM CUTTER



## PRODUCT PARAMETER (SPECIFICATION)

Model	Excavator	Hydraulic power	Weight	Max Pressure	Max Flow	Recommended Flow	Output Shaft Speed	Output Torque	Cutter Bit	Diameter of standard cutting head	Width of standard cutting head
YF - 02RW	1-3 ton	22 kw	160 kg	315 bar	40 lpm	25-38 lpm	95rpm@38lpm	1592Nm@315bar	44 pcs	360 mm	450 mm
YF - 05RW	2.5~6 ton	22 kw	500 kg	315 bar	65 lpm	40-60 lpm	80rpm@60lpm	3780Nm@315bar	48 pcs	450 mm	750 mm
YF - 10RW	5~10 ton	36 kw	650 kg	315 bar	112 lpm	60-100 lpm	80rpm@100lpm	6440Nm@315bar	52 pcs	480 mm	780 mm
YF - 15RW	10~15 ton	50 kw	720 kg	315 bar	150 lpm	60-140 lpm	82rpm@140lpm	8455Nm@315bar	56 pcs	520 mm	830 mm
YF - 20RW	15~20 ton	80 kw	1370 kg	315 bar	250 lpm	140-220 lpm	78rpm@220lpm	14170Nm@315bar	64 pcs	570 mm	960 mm
YF - 30RW	20~30 ton	110 kw	1800 kg	315 bar	350 lpm	200-300 lpm	71rpm@300lpm	21155Nm@315bar	64 pcs	650 mm	1080 mm
YF - 40RW	30~50 ton	140 kw	1850 kg	400 bar	400 lpm	290-360 lpm	72rpm@360lpm	31980Nm@400bar	64 pcs	670 mm	1050 mm
YF - 60RW	50~70 ton	220 kw	2650 kg	350 bar	500 lpm	350-460 lpm	55rpm@460lpm	47017Nm@350bar	76 pcs	800 mm	1330 mm

Please note that the maximum flow and pressure cannot be met at the same time, please consult your supplier or Yichen company before use.





# CUTTER-HEADS

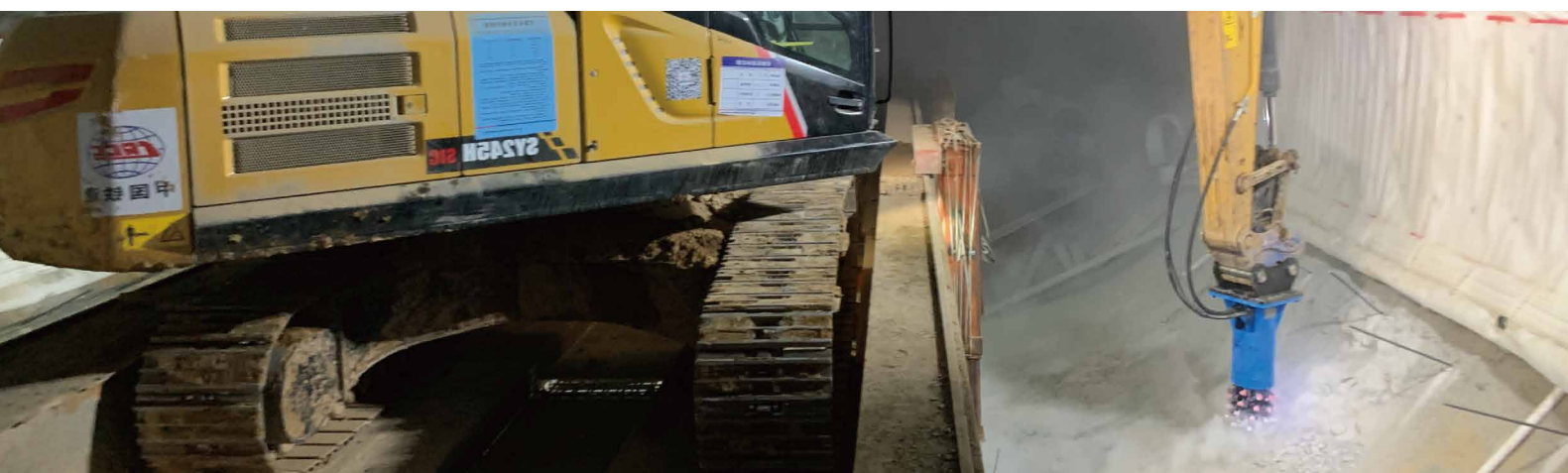


Specially designed for excavator installation, used for contour milling A multifunctional equipment that integrates milling, roughening, cleaning, and profiling.

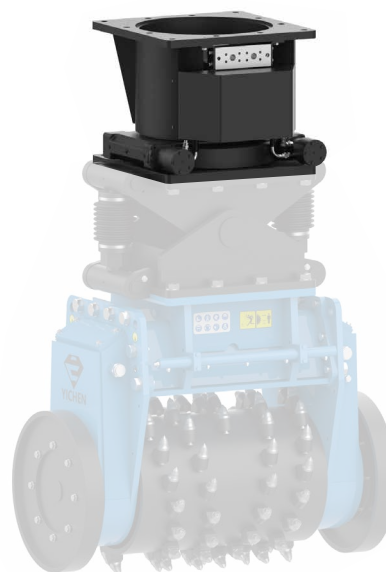
## PRODUCT PARAMETER (SPECIFICATION)

Model	Excavator	Max Power Output	Max Flow	Recommended Flow	Pressure	Output Torque	Output Shaft Speed	Weight	Cutter Bit
YF-30UL	20-40 ton	105 kW	320 LPM	200-300 LPM	315 bar	17795Nm@315bar	56-85 RPM	2100 kgs	68 pcs

Please note that the maximum flow and pressure cannot be met at the same time, please consult your supplier or Yichen company before use.



# ROTATION UNIT



When combined with an RU series rotation unit, drum cutters can be in the ideal position to meet all cutting requirements, and are widely used in tunnelling, trenching and profiling applications.

All rotation units have a hydraulic swivel joint as standard allowing endless rotation of the rotary drum cutter. All rotation units have a solenoid valves and in-cab controller allowing simpler auxiliary lines and easier switch. The rotation units are long-lasting, robust and low-maintenance.

## PRODUCT PARAMETER (SPECIFICATION)

Model	Excavator	Rotation Diameter	Max. flow of rotary feedthrough	Max. pressure of rotary feedthrough	Max. flow of rotary drive	Max. pressure for rotary drive	Max. holding torque of rotator drive	Number of rotary drive motors	Weight
RU-7	1~5 ton	258x260x360x300 mm	80 LPM	350 bar	10 LPM	160 bar	10.4 KN	1 pcs	180 kgs
RU-9	5~8 ton	340x360x470x410 mm	120 LPM	350 bar	20 LPM	160 bar	38.7 KN	1 pcs	220 kgs
RU-14	9~15 ton	455x450x660x600 mm	160 LPM	350 bar	30 LPM	160 bar	102 KN	2 pcs	420 kgs
RU-17	15~25 ton	580x560x765x670 mm	250 LPM	350 bar	40 LPM	160 bar	152 KN	2 pcs	680 kgs
RU-21	20~40 ton	690x680x900x830 mm	400 LPM	350 bar	40 LPM	160 bar	211 KN	2 pcs	850 kgs
RU-25	30~60 ton	750x880x1050x935 mm	700 LPM	350 bar	40 LPM	160 bar	271 KN	2 pcs	950 kgs

Please note that the maximum flow and pressure cannot be met at the same time, please consult your supplier or Yichen company before use.





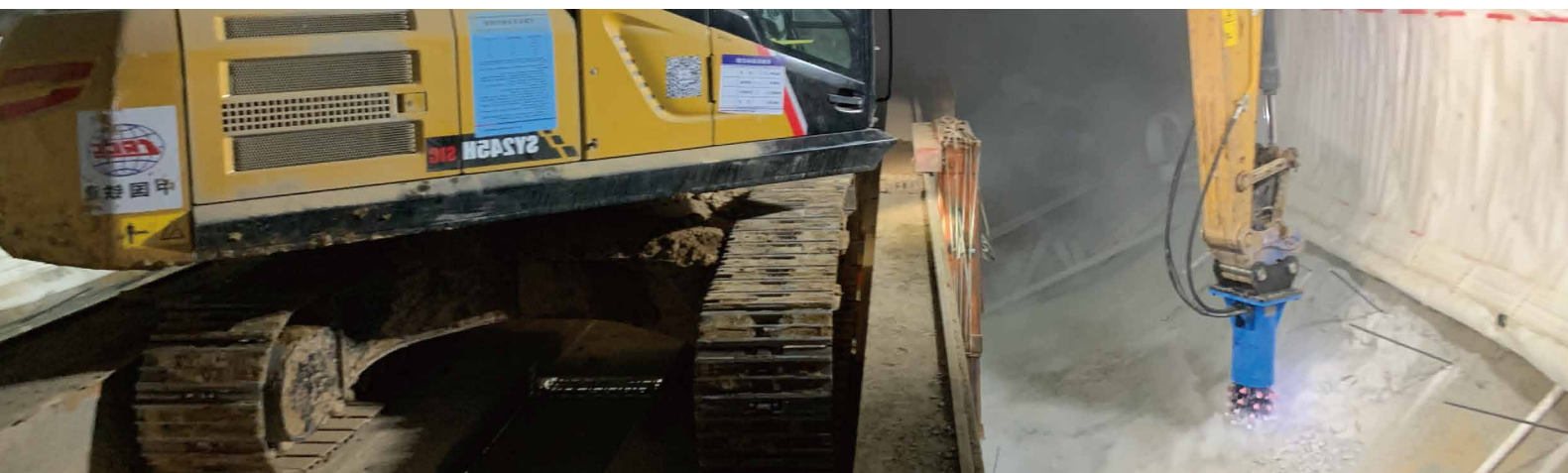
# AXIAL DRUM CUTTER



## PRODUCT PARAMETER (SPECIFICATION)

Model	Excavator	Max Power Output	Max Flow	Recommended Flow	Pressure	Output Torque	Output Shaft Speed	Weight	Cutter Bit
YD - 02RD	0.5-2 ton	20 kW	75 LPM	27-60 LPM	≤205 bar	1870 Nm@205bar	105rpm@60Lpm	120 kgs	28 pcs
YD - 05RD	2.5-6 ton	34 kW	115 LPM	40-100 LPM	≤205 bar	3100 Nm@205bar	105 RPM@100LPM	160 kgs	32 pcs
YD - 10RD	8-15 ton	63 kW	150 LPM	100-140 LPM	≤270 bar	6220 Nm@205bar	97 RPM@140LPM	360 kgs	40 pcs
YD - 20RD	18-30 ton	100 kW	230 LPM	120-200 LPM	≤300 bar	8760 Nm@300bar	110 RPM@200LPM	950 kgs	50 pcs
YD - 30RD	30-50 ton	160 kW	350 LPM	200-320 LPM	≤300 bar	21600 Nm@300bar	71 RPM@320LPM	1484 kgs	45 pcs

Please note that the maximum flow and pressure cannot be met at the same time, please consult your supplier or Yichen company before use.



USAGE  
SCENARIO



## DRUM CUTTER SERIES





# ROCK SAW SERIES >>>

## FEATURES & BENEFITS

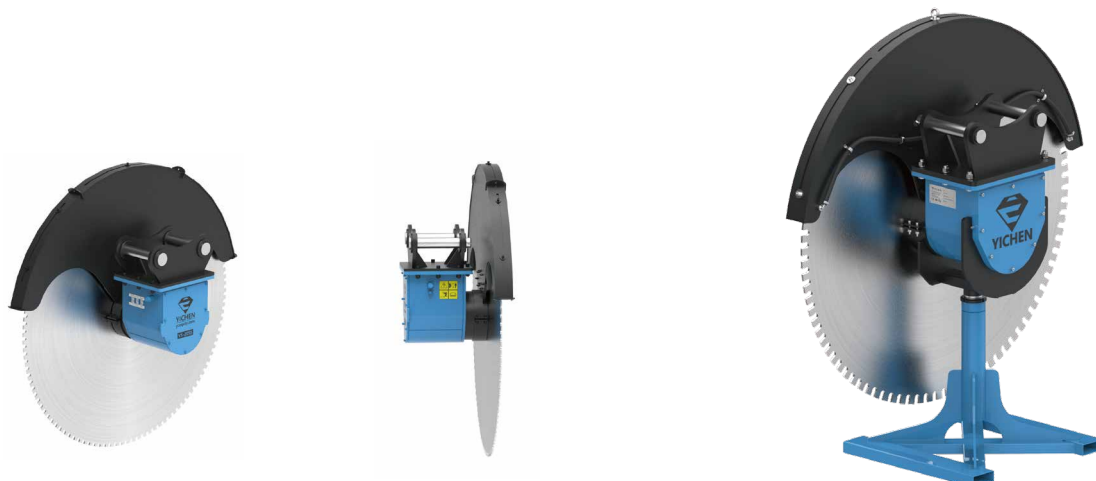
Yichen Rock Saw series are equipped with diamond tipped blade for cutting sandstone, reinforced concrete, granite, limestone, hard limestone and even metal parts. 360° Rotating guard for easy maneuverability & maximum protection. Our Rock Saw can work in two directions and has adjustable hydraulic brake system. Large power, high efficiency, easy installation, The rock saws can be installed directly to the excavator, water cooling can meet its cooling need. Designed extensions allow you to cut along the wall.

## APPLICATIONS

- ▶ Building demolition
- ▶ Cutting reinforced concrete, cement pavement
- ▶ Excavation of foundation, rock and concrete of basement.
- ▶ Underground cable trench cutting operation.
- ▶ Quarry excavation operations,
- ▶ Rock waste reshaping, cutting and other operations.
- ▶ Rocky tunnel or trench excavation



# SINGLE BLADE ROCK SAW



## PRODUCT PARAMETER (SPECIFICATION)

Model	Excavator	Max Power Output	Max Flow	Recommended Flow	Max Pressure	Output Torque	Output Shaft Speed	Weight	Saw Blade spec	Applicable Materials
YS - 05SS	5-10 ton	33 kW	105 LPM	60- 100 LPM	315 bar	960 Nm@315bar	0- 549 RPM	250 kgs	Φ 800- 1400 mm	Basalt Marble Granite Limestone enforced concrete
YS - 10SS	8-16 ton	48 kW	160 LPM	100- 150 LPM	315 bar	1580 Nm@315bar	0- 509 RPM	350 kgs	Φ 1400- 2000 mm	
YS - 15SS	15-25 ton	59 kW	300 LPM	150- 290 LPM	315 bar	3100 Nm@315bar	0- 480 RPM	450 kgs	Φ 1600- 2200 mm	
YS - 20SS	20-45 ton	80 kW	420 LPM	200- 390 LPM	315 bar	4900 Nm@315bar	0- 425 RPM	750 kgs	Φ 2200- 3600 mm	
YS - 25SS	25-60 ton	100 kW	430 LPM	300- 420 LPM	315 bar	6630 Nm@315bar	0- 325 RPM	950 kgs	Φ 2600- 3600 mm	

Please note that the maximum flow and pressure cannot be met at the same time, please consult your supplier or Yichen company before use.

# DOUBLE BLADE ROCK SAW



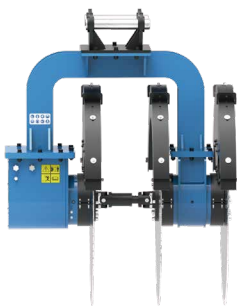
## PRODUCT PARAMETER (SPECIFICATION)

Model	Excavator	Max Power Output	Max Pressure	Max Flow	Recommended Flow	Output Torque	Output Shaft Speed	Weight	Saw Blade spec	Cutting Depth	Distance Between Blades
YS - 15ADS	8-16 ton	59 kw	315 bar	220 lpm	150 lpm@160 bar	428 rpm@150 lpm	896 Nm@160 bar	950 kgs	Φ 1200 mm	400 mm	400-1000mm Adjustable Customizable
YS - 20ADS	15-25 ton	80 kw	315 bar	240 lpm	205 lpm@160 bar	333 rpm@205 lpm	1536 Nm@160 bar	1050 kgs	Φ 1400 mm	470 mm	
YS - 25ADS	20-45 ton	100 kw	315 bar	300 lpm	255 lpm@160 bar	318 rpm@255 lpm	2048 Nm@160 bar	1350 kgs	Φ 1600 mm	550 mm	
YS - 30ADS	25-45 ton	120 kw	315 bar	320 lpm	240 lpm@200 Bar	300 rpm@240 lpm	2560 Nm@200 bar	1850 kgs	Φ 1800 mm	630 mm	

Please note that the maximum flow and pressure cannot be met at the same time, please consult your supplier or Yichen company before use.



# TRIPLE-BLADE SAW



## PRODUCT PARAMETER (SPECIFICATION)

Model	Excavator	Max Power Output	Max Pressure	Max Flow	Recommended Flow	Output Torque	Output Shaft Speed	Weight	Saw Blade spec	Cutting Depth	Distance Between Blades
YS-20TS	20-45 ton	120 kW	315 bar	320 lpm	240 lpm@200bar	2560 Nm@200 bar	300 rpm@240 lpm	2000 kgs	Φ1800 mm	630 mm	500 mm Customizable

Please note that the maximum flow and pressure cannot be met at the same time, please consult your supplier or Yichen company before use.





# CRUSHER BUCKET SERIES >>>

## FEATURES & BENEFITS

Yichen Crusher Buckets series are designed capable of crushing a wide range of sizes and types of material, It can be used for crushing and recycling of construction waste such as concrete, bricks, asphalt concrete, ceramics, glass, etc. The series provides on-site crushing with reduced transportation and dumpsite costs, offers low maintenance and high performance paired with great usability. The upper and lower jaws can be used interchangeably, which greatly prolongs the service life of the product. Reversible running direction available to resistant to blockages.





# CRUSHER BUCKET



## APPLICATIONS

- ▶ Crushing and recycling of construction waste such as concrete, bricks, asphalt concrete, ceramics, glass, etc.
- ▶ Crushing of railway cement sleepers, cement poles, various bridge pier piles.
- ▶ Pavement construction and earthwork, excavation engineering, forest road construction site crushing and processing of aggregates.
- ▶ The processing of natural stone in quarries, mines, gravel pits, river pebble pits, etc.
- ▶ Sand making (using Yichen's special fine-tooth jaws) to meet the needs of construction materials in areas lacking sand.

## PRODUCT PARAMETER (SPECIFICATION)

Model	Excavator	Capacity	Throat Width	Throat Height	Output Size	Recommended Flow	Weight	Size (L xW xH)
YC - 05	6-12 ton	0.27 m <sup>3</sup>	610 mm	350 mm	15-100 mm	70-130 l/min	840 kgs	1550x900x829 mm
YC - 10	10-18 ton	0.58 m <sup>3</sup>	650 mm	510 mm	15-130 mm	90-140 l/min	1740 kgs	1900x1034x1284 mm
YC - 20	16-25 ton	0.72 m <sup>3</sup>	798 mm	510 mm	15-130 mm	150-220 l/min	2290 kgs	2095x1182x1284 mm
YC - 25	16-26 ton	0.83 m <sup>3</sup>	798 mm	550 mm	15-130 mm	150-220 l/min	2490 kgs	2230x1182x1335 mm
YC - 30	20-30 ton	0.95 m <sup>3</sup>	920 mm	550 mm	15-140 mm	180-240 l/min	3000 kgs	2230x1304x1335 mm
YC - 40	30-45 ton	1.5 m <sup>3</sup>	1210 mm	550 mm	15-145 mm	150-265 l/min	4500 kgs	2330x1600x1440 mm

Please note that the maximum flow and pressure cannot be met at the same time, please consult your supplier or Yichen company before use.





# SCREENING BUCKET SERIES >>>

## FEATURES & BENEFITS

Yichen Screening Bucket series designed as versatile machine to meet various needs. Users can realize screening, crushing, mixing by changing the different shafts. The Screening Buckets series are use for screening compost and topsoil, sand, separating waste from soil, treatment of contaminated soil, backfill of screened find soil to pipeline project, asphalt recycling etc.

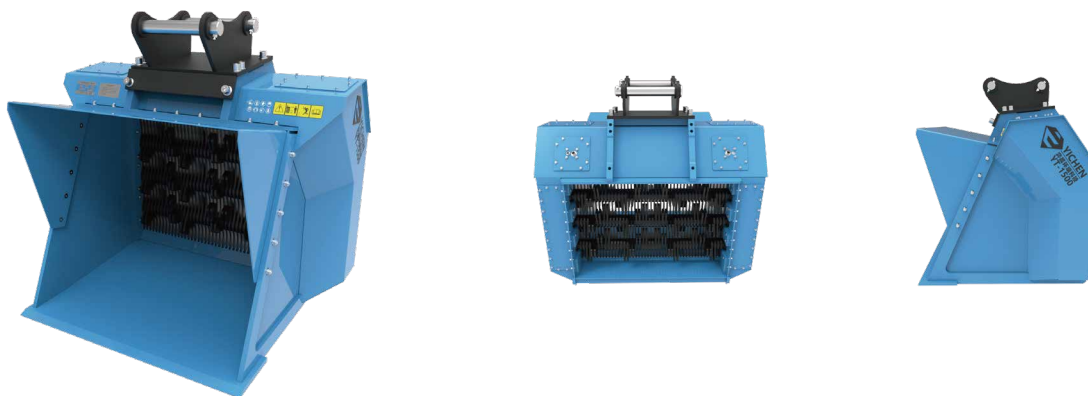
## APPLICATIONS

- ▶ Treatment of waste, broken bark, broken gypsum board.
- ▶ Screening compost and topsoil, sand, soft minerals, separating waste from soil.
- ▶ Treatment of construction/demolition waste, slag, quarry waste, tiles.
- ▶ Treatment of contaminated soil, treatment of soft soil such as sludge and silt.
- ▶ Backfill of screened find soil to pipeline project, asphalt recycle.
- ▶ Reclamation of farmlands, separation of rock and soil.





# SCREENING BUCKET

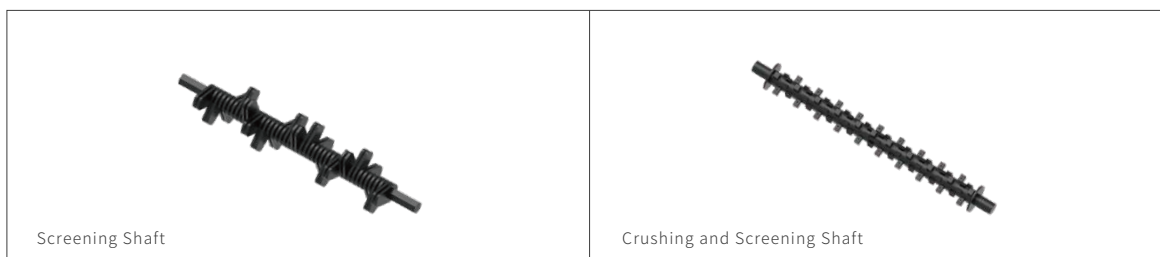


## PRODUCT PARAMETER (SPECIFICATION)

Model	Excavator	Power	Capacity	Max. Pressure	Rated Pressure	Max. Flow	Rated Flow	Weight	Shaft
YT-600	8~15 ton	53 kW	0.6 m <sup>3</sup>	345 bar	310 bar	150 lpm	70-120 LPM	950 kgs	2
YT-1200	12~25 ton	65 kW	1.2 m <sup>3</sup>	345 bar	310 bar	200 lpm	70-150 LPM	1280 kgs	2
YT-1800	20~35 ton	131 kW	1.8 m <sup>3</sup>	345 bar	310 bar	350 lpm	100-300 LPM	2250 kgs	3
YT-2400	25~35 ton	131 kW	2.4 m <sup>3</sup>	345 bar	310 bar	350 lpm	100-300 LPM	2600 kgs	3
YT-3000	30~40 ton	131 kW	3 m <sup>3</sup>	345 bar	310 bar	350 lpm	100-300 LPM	3200 kgs	4

Please note that the maximum flow and pressure cannot be met at the same time, please consult your supplier or Yichen company before use.

## OPTIONAL SHAFT



# ENVIRONMENTAL ENGINEERING EQUIPMENT SOLUTIONS



**YICHEN ENVIRONMENT TECH CO., LTD.**

*No.380, Chunbai Road, Tongjiaosi industrial Park, Fenghua District, Ningbo, China*

**WWW.YCATTACHMENTS.COM**

*Visit us, find our newest products and more.*

✉ [info@ycattachments.com](mailto:info@ycattachments.com)

☎ +86-0574- 27851020



\*The data provided in this guide is not binding, as the manufacturer reserves itself the right to make improvements to its products at any time and with no advance notice.