


ENVIRONMENTAL ENGINEERING EQUIPMENT SOLUTIONS




twitter



youtube

 Tel: +86- 0574- 28826886

 Fax: +86- 0574- 27851020

 Email: info@ycattachments.com

 Website: www.ycattachments.com

Plant 1: No. 380, Chunbai Road, tongjiaosi Industrial Park, Fenghua District, Ningbo City

Plant 2: No.10, Miaoqian street, Fangqiao village, Fenghua District, Ningbo City

SCREENING BUCKET SERIES

YICHEN
EXCAVATOR
ATTACHMENTS
SERIES
BROCHURE

YT PRODUCT SERIES

USING HIGH-QUALITY MOTORS AND THE WORLD'S LEADING HYDRAULIC
DRIVE TECHNOLOGY



+86-13989324095

HEADQUARTERS: room 1302, Xinzhou Ginza, 88 Qianhe South Road,
Yinzhou District, Ningbo

PRODUCT INTRODUCTION

Yichen Screening Bucket is suitable for universal auxiliary tools of loaders, excavators or skid steer loaders.
It can complete crushing, screening, aeration, mixing, stirring, separating, feeding and loading materials in one step.



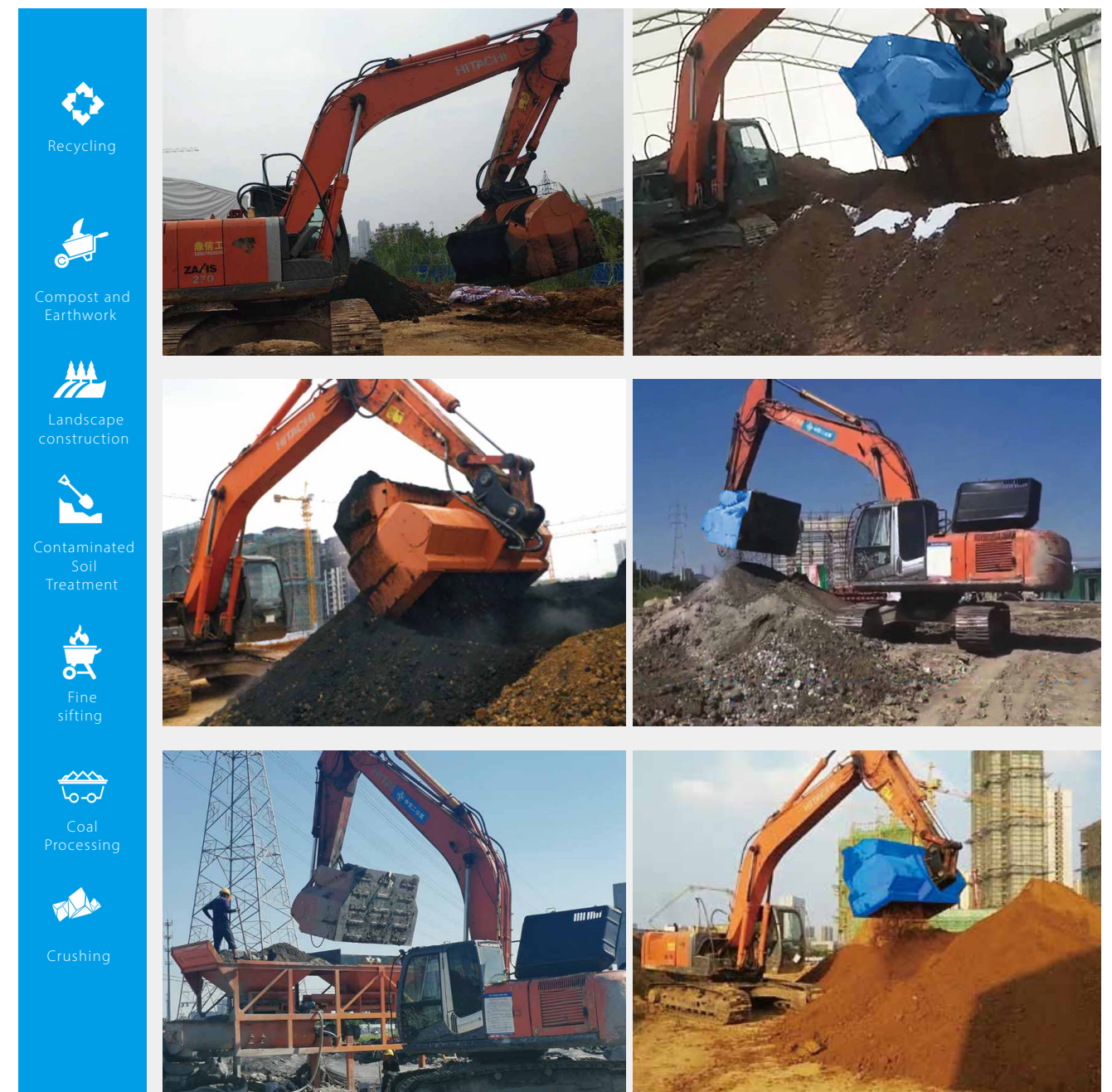
- ▶ The screening bucket for excavators has high working efficiency and can realize processing operations such as screening, crushing, mixing and aeration in one operation.
- ▶ Considerable profit margins, processed materials can be recycled, saving material costs.
- ▶ Excellent environmental protection grade, realize energy saving and waste reduction.
- ▶ Sturdy frame structure, the motor is placed in the frame to avoid external force damage and prolong the service life.
- ▶ Efficient power transmission system adopts high-quality motors and world-leading hydraulic drive technology.
- ▶ Self-cleaning design prevents the equipment from being blocked by materials and can handle materials with high water content.

PRODUCT FEATURES

Construction waste treatment and reuse: treatment of waste, broken bark, and broken gypsum board, treatment of construction/demolition waste, slag, quarry waste, ceramic tiles, backfill of the filtered soil to the pipeline project, and asphalt recycling.

Screening: screening compost and topsoil, sand, soft minerals, separating waste from soil, reclaiming farmland, and separating rock and soil.

Contaminated soil treatment: treatment of soft soil such as sludge and silt.



SCREENING BUCKET SERIES

USING HIGH-QUALITY MOTORS AND THE WORLD'S LEADING HYDRAULIC DRIVE TECHNOLOGY

APPEARANCE VIEW



DESCRIPTION

Different types of materials can be processed.
Such as: topsoil, black soil and excavated muck, polluted soil, clay, peat soil, bark, biological waste, construction and demolition waste, asphalt, glass, coal, oil shale, limestone and many other different materials

MODEL

YT-1500
YT-2000

YT - 1500

EXCAVATOR 18-30 ton

PRODUCT PARAMETER (SPECIFICATION)

Excavator	18- 30 ton	Cutting Force	125 kn
Opening Dimensions	1460 MM	Weight	2170 kg
Output Width	1000 MM	Oil Flow	100-225 L/min
Load Capacity	1.2 m³	Pressure	320 bar
Dimensions	1500x1200x1530 mm		



YT - 2000

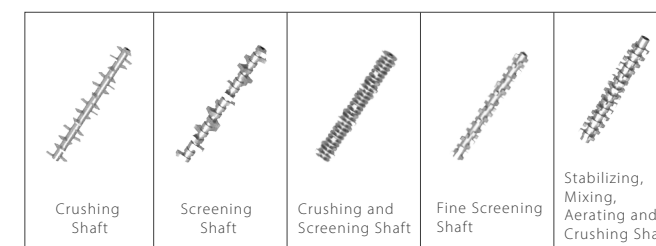
EXCAVATOR 25-40 ton

PRODUCT PARAMETER (SPECIFICATION)

Excavator	25- 40 ton	Cutting Force	190 kn
Opening Dimensions	1960 MM	Weight	2473 kg
Output Width	1500 MM	Oil Flow	150-300 L/min
Load Capacity	1.6 m³	Pressure	320 bar
Dimensions	2000x1200x1530 mm		

ACCESSORIES

Replaceable roller



blade

- Single blade
- Double knife board
- Three knife board

COOPERATION PROJECT



Construction site soil refinement project

Project location: Anhui
Project volume: 10,000 square meters
Problem solving: The soil is directly refined on site, directly backfilled, and used as building materials for project construction



Soil active restoration project

Project location: Hangzhou
Project volume: 13,000 square meters
Solve the problem: repair the soil, solve the problem of soil activity



Soil remediation project

Project location: Tongyuan, Anhui
Project volume: 6000 square meters
Solve the problem: the contaminated soil is pretreated, the soil is stabilized into a non-toxic form, and the treated soil can be used as good land for planting crops



Comprehensive pipe gallery project

Project location: Ningbo
Project volume: 8000 square meters
Solve the problem: use construction waste to make controllable low-strength materials (referred to as CLMS)

“WELCOME
TO CONTACT US FOR COOPERATION”

ASSURANCE
QUALITY

