



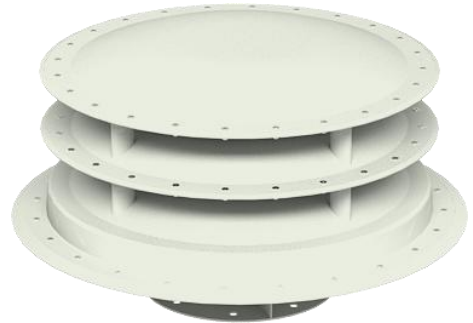
RX260A

MECHANICAL

Parameter	Details
Height	393mm
Diameter	696mm
Weight	25kg
Material	Aluminum alloy

ACOUSTIC PERFORMANCE

Parameter	Details
Peak SPL@1m	137dBA
Continuous SPL@1m	131dBA
Max Range	355m



ELECTRICAL REQUIREMENTS

Parameter	Details
Power Consumption	400W
Power Input	External 110v~220V AC to 24v DC adapter

ENVIRONMENTAL PERFORMANCE

Parameter	Details
Hot Operating Temp	MIL-STD-810G, Method 501.5, Procedure II, Design type Hot, 60°C
Cold Operating Temp	MIL-STD-810G, Method 502.5, Procedure II, Design type Basic Cold, -33°C
Hot Storage Temp	MIL-STD-810G, Method 501.5, Procedure I, 70°C
Cold Storage Temp	MIL-STD-810G, Method 502.5, Procedure I, -40°C
Operating Humidity	MIL-STD 810G, Method 507.5, Procedure II, Aggravated Cycle
Rain	MIL-STD-810G, Method 506.5, Procedure I, Blowing rain
Salt Fog	MIL-STD-810G, Method 509.5
Shipboard Vibration	MIL-STD-167-1A
Shipboard Shock	MIL-S-901D, Shipboard Shock, Class I, Shock grade B
Random Vibration	MIL-STD-810G, Method 514.6, Wheeled Vehicles

SAFETY

*Designed to meet MIL-STD-810G, MIL-STD-167-1A & MIL-S-901D

Parameter	Details
safety	MIL - STD - 1474D

ELECTROMAGNETIC COMPATIBILITY (EMC)

Parameter	Details
EMC	FCC Part 15 class A radiated emissions: CE: MIL-STD-461F