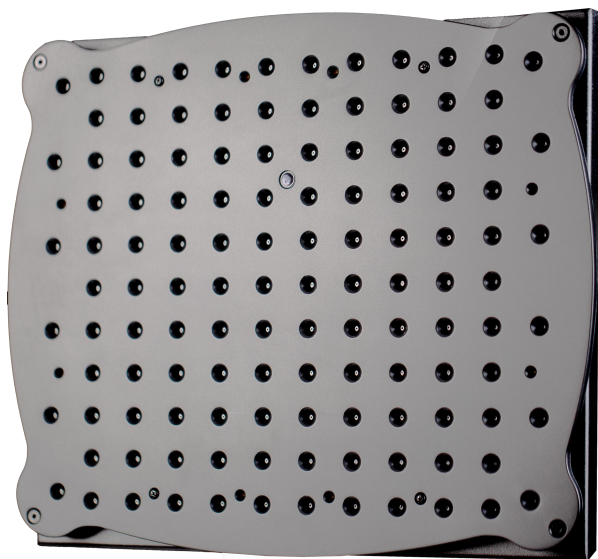




# RU122X



## Detection Performance

Max. detection range (typical consumer drone)	≥500 m
Detection-to-classification time	≤2 s
Multi-target handling capability	Simultaneously track ≥5 targets
Azimuth accuracy	≤3°

## Recognition Performance

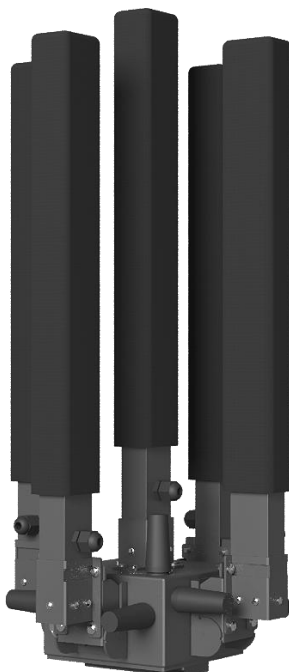
Detection probability (Pd) under 65 dB(A) noise	≥95%
False alarm rate (FAR) per 24 hours	≤1 time
Drone type recognition accuracy	≥90%

## System Performance

Continuous operation time	≥8h (battery) / Continuous (mains or PoE)
Data interfaces	Gigabit Ethernet, Wi-Fi (optional), 4G/5G (optional)
Protection rating	IP65
Operating temperature	-20°C to +50°C
Dimensions	370 mm×310 mm×42 mm
Weight	2.8 kg
Deployment	Tripod, vehicle-mounted, or pole-mounted



# RU20X



## Detection Performance

Max. detection range (typical consumer drone)	≥500 meters
Detection-to-classification time	≤2 seconds
Multi-target handling capability	Simultaneously track ≥5 targets
Azimuth accuracy	≤3°

## Recognition Performance

Detection probability (Pd) under 65 dB(A) noise	≥95%
False alarm rate (FAR) per 24 hours	≤1 time
Drone type recognition accuracy	≥90%

## System Performance

Continuous operation time	≥8h (battery) / Continuous (mains or PoE)
Data interfaces	Gigabit Ethernet, Wi-Fi (optional), 4G/5G (optional)
Protection rating	IP65
Operating temperature	-20°C to +50°C
Dimensions	1100 mm×1100 mm×570 mm
Weight	10 kg
Deployment	Tripod, vehicle-mounted, or pole-mounted
Typical power consumption per node	≤15 W



# LPS400Z



## LENS

Parameter	Details
Dimensions	135mm (L)×59mm (W)×78mm (H)
Weight	0.4 kg

## MECHANICAL

Parameter	Details
Dimensions	200mm (L)×146mm (W)×39mm (H)
Weight	2.5 kg

## OPTICA PERFORMANCE

Parameter	Details
Luminous Intensity	≥10,100,000,000 cd
Luminous Flux	≥24,200 lm
Irradiation Angle	0.095°~5.25°
Illumination Distance	≥201,000 m
Light Source Type	Semiconductor Laser

## ELECTRICAL REQUIREMENTS

Parameter	Details
Power Consumption	500 W