



# Border Control



**Overview & Product Guide**



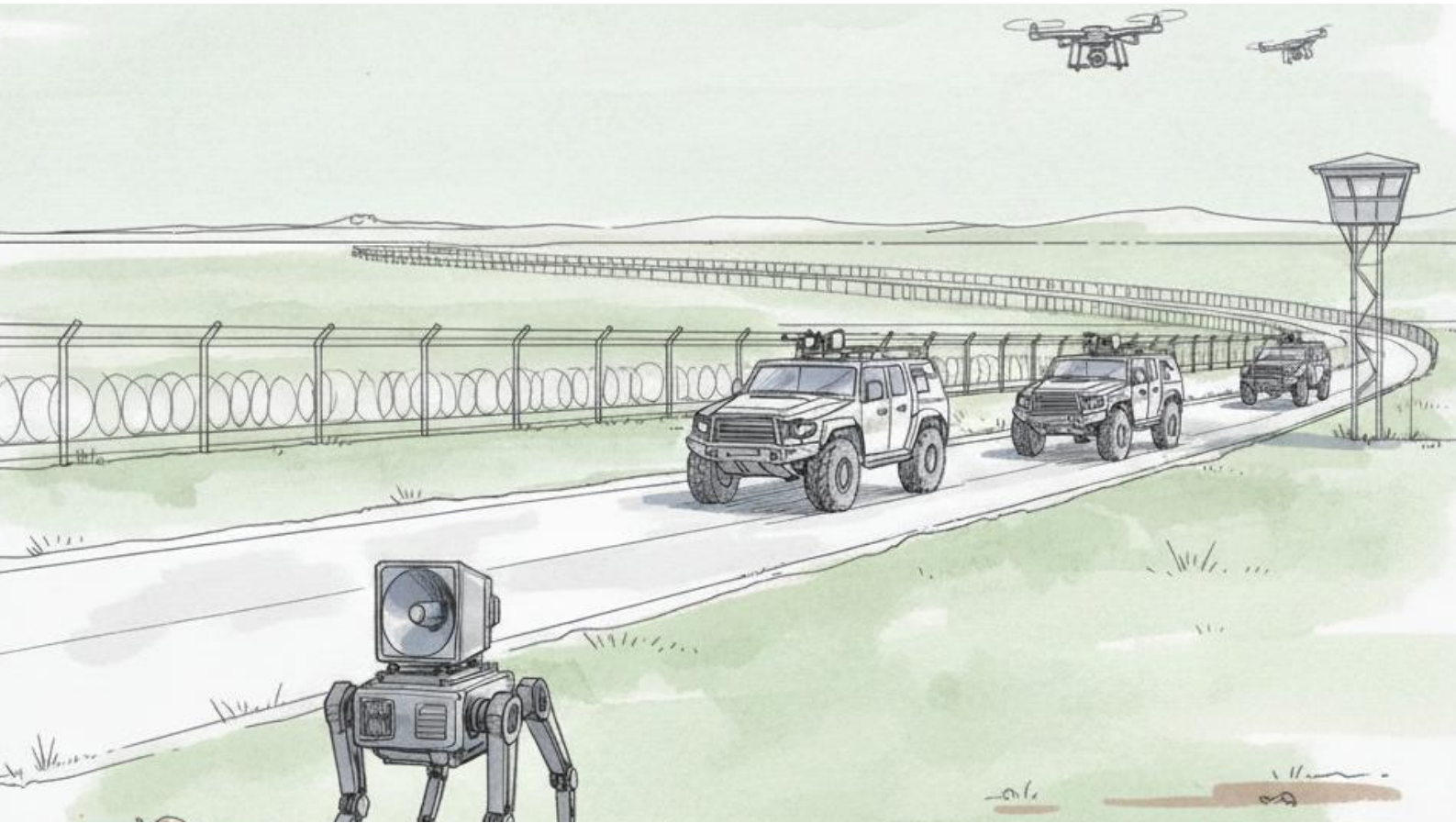


In border control scenarios, we have developed a comprehensive ecosystem encompassing portable devices, fixed base stations, and mobile vehicle-mounted systems, establishing a tiered non-lethal prevention and control framework of close-range warning, medium-range deterrence, and long-range interception.

By leveraging directional acoustic technology for precise warning transmission and high-intensity lighting for visual deterrence, the system effectively minimizes physical confrontation at its source. It ensures the safety of both law enforcement personnel and cross-border travelers while adhering to international humanitarian standards, achieving a balance between security and compassion.

The ecosystem further integrates unmanned patrol equipment optimized for complex terrains such as mountains and deserts, enabling mobile deterrence and real-time monitoring in otherwise inaccessible regions. Featuring multi-language broadcasting, HD video surveillance, and environmental sensing capabilities, all products are designed to meet diverse operational demands — from routine patrols and rapid responses to unauthorized crossings to fixed-point security at critical areas.

Together, these systems provide 24/7 technical support, delivering comprehensive, efficient, and stable protection for border security and regional order



#### RC20Y

- Directional Long-Range Acoustic Device: Sound Support Tool for Border Control
- Precise Directional Control: Focused propagation avoids indiscriminate effects, targeting specific border areas to ensure efficient information transmission and deterrent warning.

#### RP11C

- Portable Handheld Device: Personal Support Tool for Border Control
- Lightweight and Patrol-Friendly: Compact and portable, suitable for foot patrols and fixed-point monitoring along borders; easy to carry and operate across various terrains.

#### RP40Z

- Portable Acoustic Device: Sound Support Tool for Border Control
- Powerful Acoustic Deterrence: High sound pressure and long-distance propagation deliver warnings and deterrent messages accurately, suppress noise, and ensure instruction transmission.

#### RH80Y

- Optical-Acoustic Coordinated Deterrence: Integrates high-brightness LED lights with precise directional acoustic beams. Strong light provides long-range visual suppression, while directional sound delivers warning instructions over long distances, achieving dual deterrence through “strong light + directional sound” to counter illegal intrusions.

#### RA11Z

- High-Altitude, Wide-Area Sound Coverage: Leveraging drone mobility, sound propagates accurately over wide areas, covering open and complex border terrains, filling gaps in ground-based acoustic transmission.

#### RS10Z

- Integrated Protection for Officer Safety: Combines arm shield protection with a lightweight acoustic-optical module, providing close-range defense and rapid activation of acoustic-optical functions, balancing safety and operational control.

#### Rotunbot RT-G.800

- All-Terrain Long Endurance for Border Patrol: Highly mobile with strong climbing capability, long battery life, and wide coverage, designed to handle complex border terrains and meet long-distance control requirements.

#### LPE25D12

- Long-Distance Light Deterrence: Advanced LED light source with precise optics provides powerful long-range illumination, forming visual suppression to help identify targets and deter illegal border activities.

#### LHW55Z

- Long-Distance Light Suppression: New solid-state light source with precise optics provides far-reaching illumination, forming visual suppression to aid target identification and deter illegal intrusions.



## RH80Y

Peak dB	168
Continuous dB	155
Max Range m	5623

The RH80Y integrates laser, camera, LED spotlight, and pan-tilt platform. Its high-intensity focused beam delivers long-range illumination and visual warnings.

Equipped with a  $\pm 15^\circ$  @2kHz/-3dB directional acoustic beam, it merges sound and light synergy, ideal for border patrols, maritime vigilance, and public security—achieving “intense light deterrence + directional audio warning”.



## RC20Y

Peak dB	156
Continuous dB	146
Max Range m	1995

The acoustic beam angle of RC20Y directional long-range acoustic device is  $\pm 15^\circ$  @2kHz/-3dB. Widely used in port supervision, construction site command, maritime communication, and other scenarios, it provides efficient support for safety management and information transmission.



## Rotunbot RT-G.800

Peak dB	142
Continuous dB	134
Max Range m	501

The Rotunbot RT-G.800 spherical robot integrates a high-performance acoustic module with a high sound pressure level, enabling it to transmit sound clearly through noisy environments. It achieves efficient voice warnings and remote communication in security patrols and monitoring inspections, ensuring the smooth progress of tasks.







## LHW55Z

Output cd	7,652,000
Angle °	0.8-15
Range m	5500

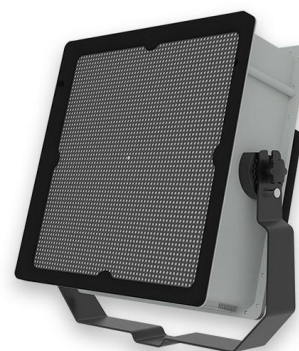
The LHW55Z is an advanced optical non-lethal lighting system utilizing a new-generation solid-state light source. It supports strobe, high-brightness, and gradual lighting modes and provides superior illumination distance among products of similar size and power. With precision optical design, it achieves illumination distances up to 5500 m, ideal for border security, maritime defense, riot control, and special operations.



## RP40Z

Peak dB	160
Continuous dB	150
Max Range m	3162

RP40Z portable Acoustic Device is suitable for counter-terrorism operations, suppressing chaotic noise to deter criminals; it is also used in disaster rescue, penetrating rubble and background noise to locate trapped persons and assist in rescue efforts.



## RP11C

Peak dB	147
Continuous dB	138
Max Range m	794

RP11C portable Acoustic Hailing Device is portable and easy to carry, supporting hand-held and backpack modes. Suitable for emergency rescue broadcasts, law enforcement shouting, and other scenarios, it flexibly meets the demands of various environments.





## RA11Z

Peak dB	149
Continuous dB	139
Max Range m	891

Drone Speaker takes advantage of the high altitude to transmit sound accurately. It supports real-time direct transmission and pre-recorded loop playback. It is suitable for event order maintenance, disaster evacuation, and traffic persuasion, effectively covering the target area.



---

## RS102

Peak dB	133
Continuous dB	NA
Max Range m	14

RS102 is equipped with lightweight acoustic-optical modules. Its directional sound wave technology can penetrate shouting noise in street riot scenes, transmitting clear warnings to the target crowd; Suitable for border deterrence and small gathering security.



---

## LPE25D12

Output cd	1,822,500
Angle °	12
Range m	2500

The LPE25D12 uses advanced LED technology and supports strobe, high-brightness, and gradual lighting modes. Its compact and precise optical design delivers illumination up to 2500 m, suitable for border defense, maritime patrol, riot control, seaport security, and airport applications.





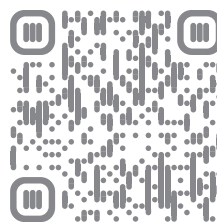
Sound the Victory Horn

**Beijing Ribri Technology Co., Ltd.**

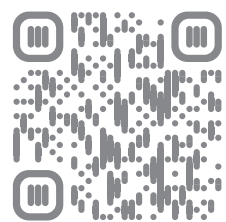
Add: 7-408, Federal International,  
No. 5 Disheng Middle Road,  
Yizhuang, Beijing, P.R.China

Tel: +86 13911896601

Email: [market@ribri.com](mailto:market@ribri.com)



Billy Whatsapp



[www.ribri.com](http://www.ribri.com)