



AMCL

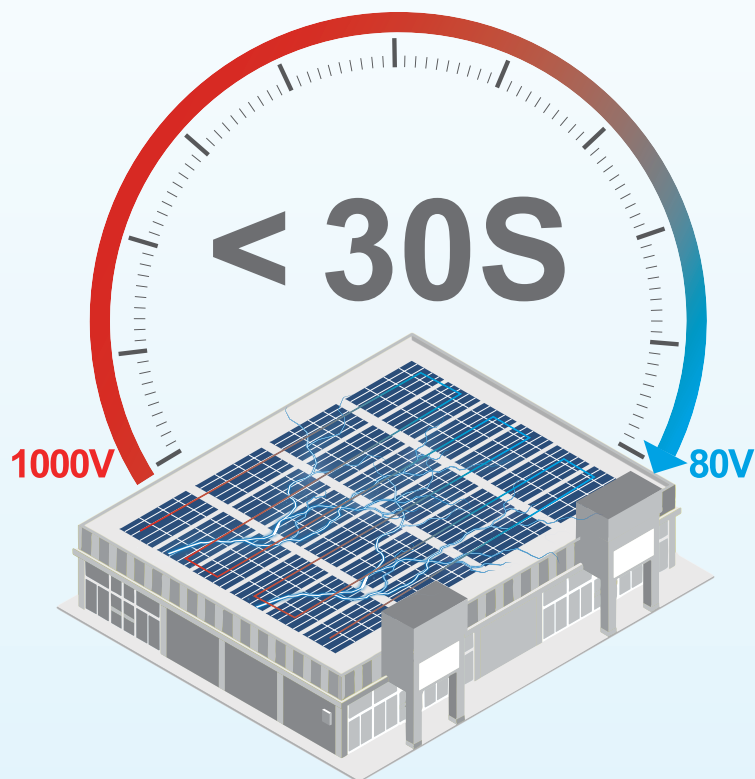
Smart Rapid Shutdown Device

 Multi-layer Protection  Smart Monitoring  Quick Installation  Flexible Design

Multi-layer Protection

Protect the safety of the power plant

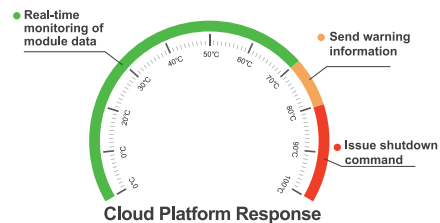
Module-level RSD



Decrease to safe voltage within **30S**
compliance to NEC 2017&2020(690.12) regulation

Active and passive safety strategy

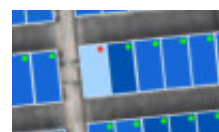
High Temperature Auto Shutdown



Cloud Platform Remote Shutdown



Shutdown the power plant



Shutdown one module

On-site Manual Shutdown

Respond to emergencies
immediately to ensure safety



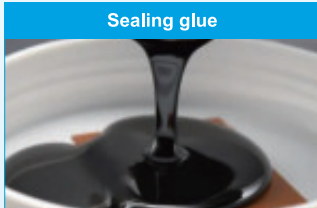
Highest Standard of Flame Retardant Grade : 5VA

Each material complies with the 5VA flame retardant grade in the U.S. UL94 standard

Casing



Sealing glue



DC cable



Terminals



Smart Monitoring

Comprehensive understanding of every PV module

Significantly improve O&M efficiency by 50%

- Reducing inspection frequency by module-level data monitoring

Traditional solution

Traditional photovoltaic power plants have low monitoring accuracy, and maintenance teams are required to conduct on-site inspections 2-3 times per quarter to ensure safety

2~3 times/quarter

VS

AndSolar solution

AndSolar Cloud enables real-time monitoring of your PV system and module operation status, reducing inspection frequency

1 time/quarter



- 1:1 restoration of the actual power plant scene, remote troubleshooting

Traditional troubleshooting

If the capacity is 200kW with 350 modules, the investigation is expected to take 4 hours

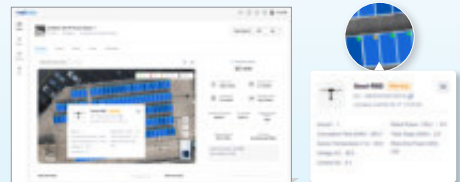
4+ hours

VS

Remote troubleshooting

AndSolar Cloud→Warning List→Plant Details→Fault Location
More helpful for large-scale and operationally inconvenient projects

5 mins



- Module-level management, remote shutdown low-efficiency or faulty modules and improve revenue

Traditional management method

Unable to shutdown low efficiency modules in a timely manner results in reduced power generation efficiency of the power plant, requiring manual O&M, and increasing operating costs



Reduce power plant revenue

VS

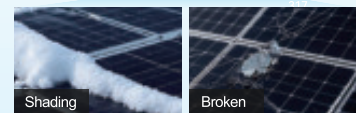
Module-level management

The faulty modules can be shutdown in time to improve the power generation efficiency, and the power plant problems can be solved together to save O&M costs



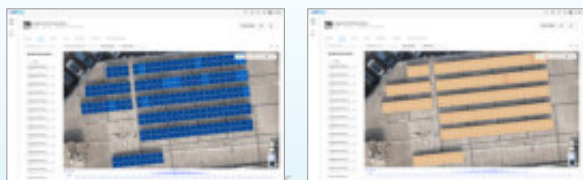
Improve power plant revenue

311	328	334	154	352	332
-----	-----	-----	-----	-----	-----



Precise Module-level monitoring around 24/7

- Data playback and locate problems



Replay daily operating data to identify potential problems in power plants

- Maximize ROI with AI integrated

*AndSolar AI will be available in Q4 2025

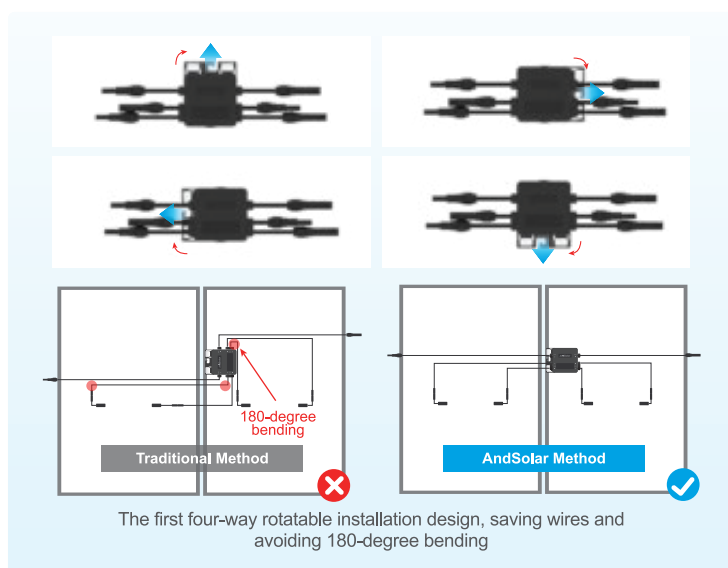


Precise module-level management powered by AI, ensure the profit of your power plant

Quick Installation

Innovative design, and installation can be completed within **30S**

Rotatable installation design



Installation methods

Bolt installation

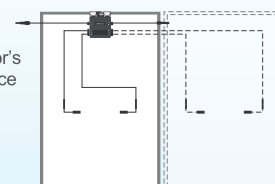


Clip installation



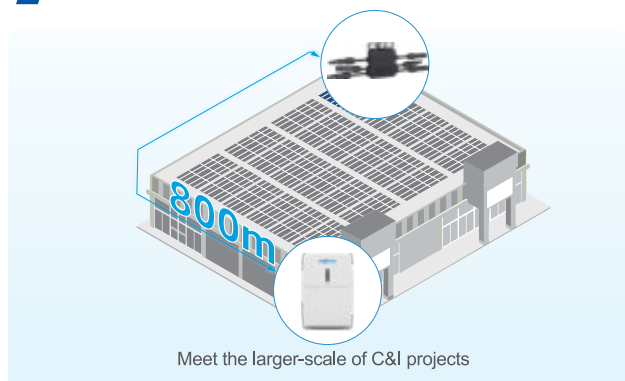
Supported pre-installation with PV modules

Enhance the connector's compatibility and reduce cost up to **15%**

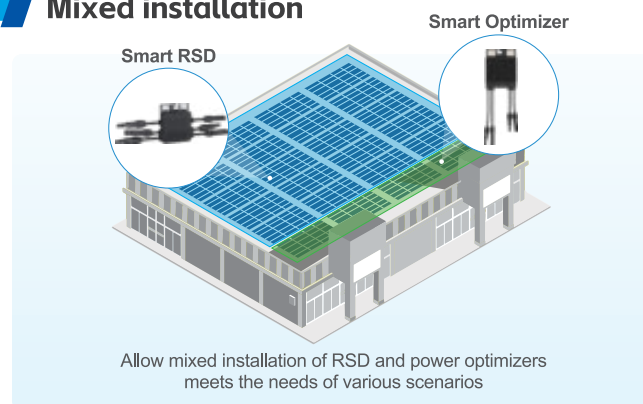


Flexible Design

Communication distance: 800 meters



Mixed installation

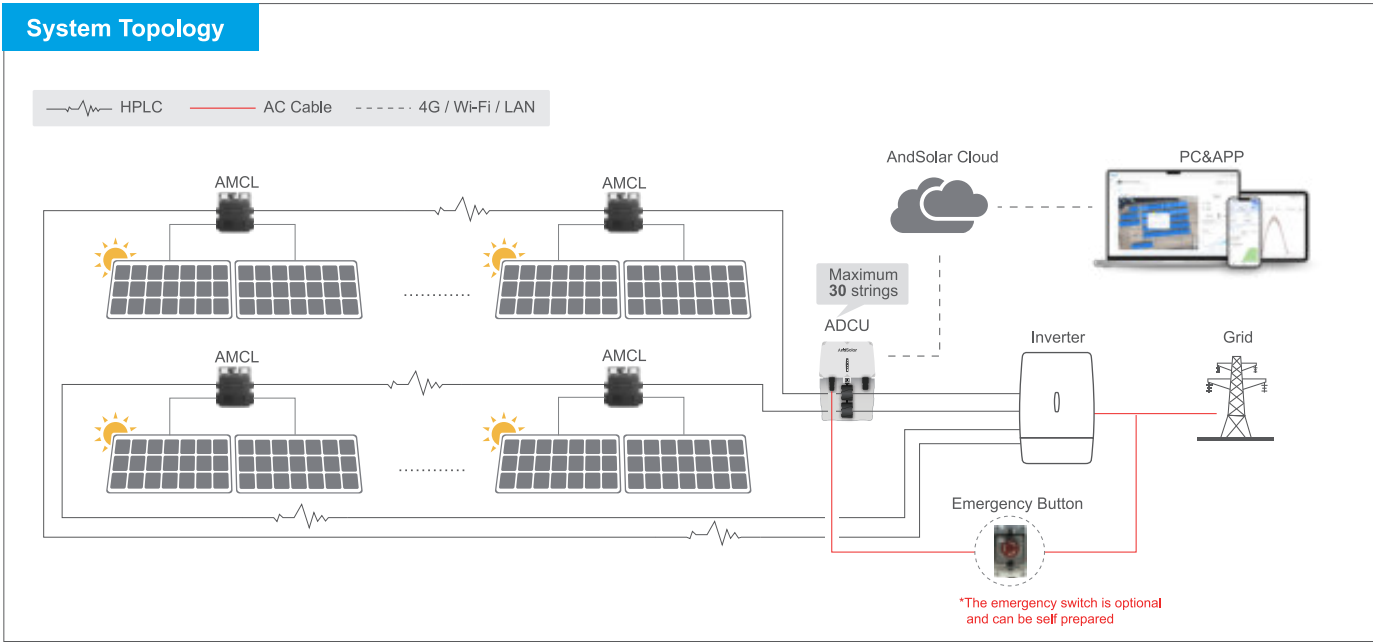


Product Features

Features		AndSolar Smart RSD	Other Brands RSD
Specifications	Compatible PV Current	15~25A	15A
	Max. Communication Distance	800m	300m
	Working Voltage	8~120V(Dual-channel)	10~80V (Single-channel)
Basic Features	Module-level Rapid Shutdown	✓	✓
	Active Safety Protection	✓	✗
	Fault Warning	✓	✗
	Shutdown Method	On-site Shutdown&Remote Shutdown&Active Shutdown	On-site Shutdown
	Control Level	Module-level	String-level
Smart Features	Module-level Data Monitoring	✓	✗
	Graphic Data Display	✓	✗
	Output Curve and Comparison	✓	✗
	Module-level Physical Positioning	✓	✗
	Early Warning Active Protection	✓	✗
	Digital Work Orders	✓	✗
	Fault Analysis	✓	✗
	O&M Strategy Analysis	✓	✗
	System Loss Analysis	✓	✗
	Full Life Cycle Asset Management	✓	✗
	Remote Upgrade(OTA)	✓	✗

Product Parameters

Model	AMCL-D2		AMCL-E2	AMCL-F2
Input				
Voltage Range	8~80V Single-channel, 120V Dual-channel			
Maximum Input Current	15A	20A	25A	
Maximum Short-Circuit Current	30A			
Output				
Voltage Range	8~120V			
Maximum System Voltage	600/1000/1500V			
Maximum Output Current	15A	20A	25A	
Maximum Voltage in Disconnect State	1V			
Structure Parameters				
Dimensions (W*D*H)	103*23*105mm			
Input/Output Connectors	MC4/Compatible with MC4/Customizable			
Input Cable Length	0.3m, 0.6m/0.6m, 1.5m/Customizable			
Output Cable Length	1.4m/Customizable			
Ingress Protection Rating	IP68/Tpye 6P			
Flame Retardant Grade	UL94 5VA			
Environment Parameters				
Temperature Range	-40℃~+85℃			
Relative Humidity Range	0~100%			
Other				
Communication Method	HPLC			
User Interface	WEB+APP			
Certification				
Safety	NEC 2017&2020(690.12), UL 1741, CSA C22.2 No.330, UL 3741, IEC/EN 62109-1			
EMC	FCC Part15, IEC/EN 61000-6-1/-2/-3/-4			



And Solar. And All



AndSolar Technology Co., Ltd.

📍 8F, Block B, Building 1, 286 Qinglonggang Road,
Suzhou City, Jiangsu Province, P. R. China

☎ +86-512-8718 7882

🌐 www.andsolartech.com

✉ sales@andsolartech.com



Facebook



Linkedin



YouTube



Instagram