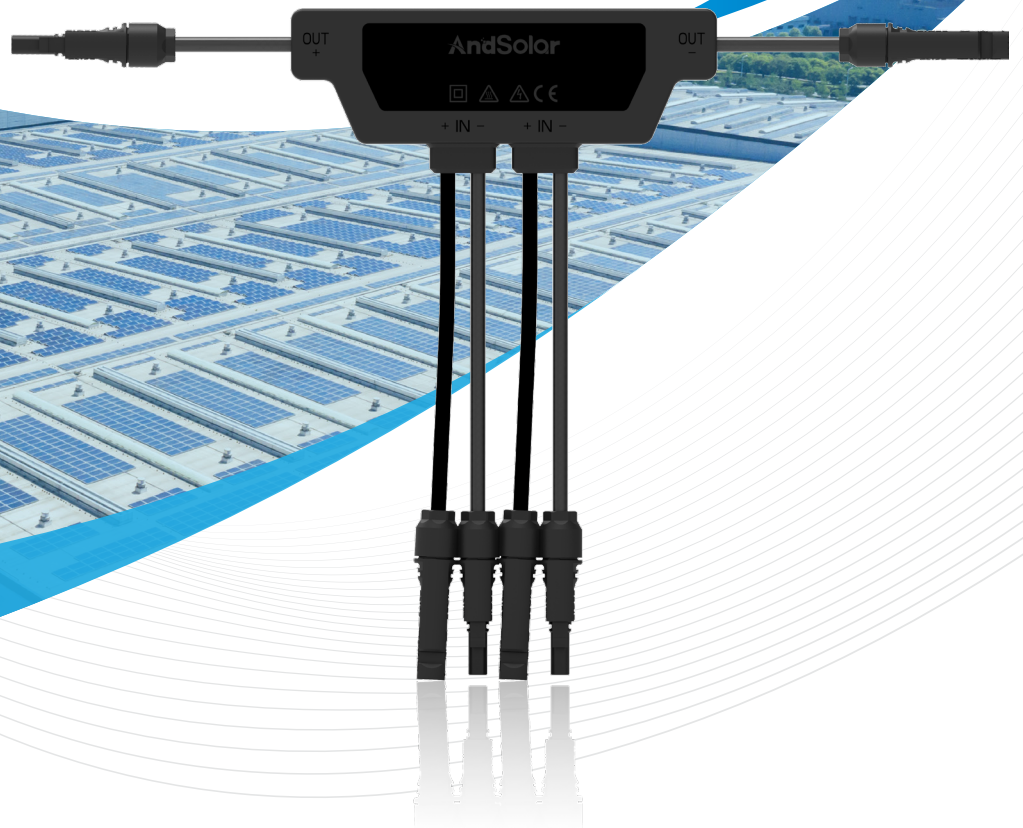




Rapid Shutdown Device

AMCL-E2



AndSolar Technology Co., Ltd.



+86-512-8718 7881



www.andsolartech.com

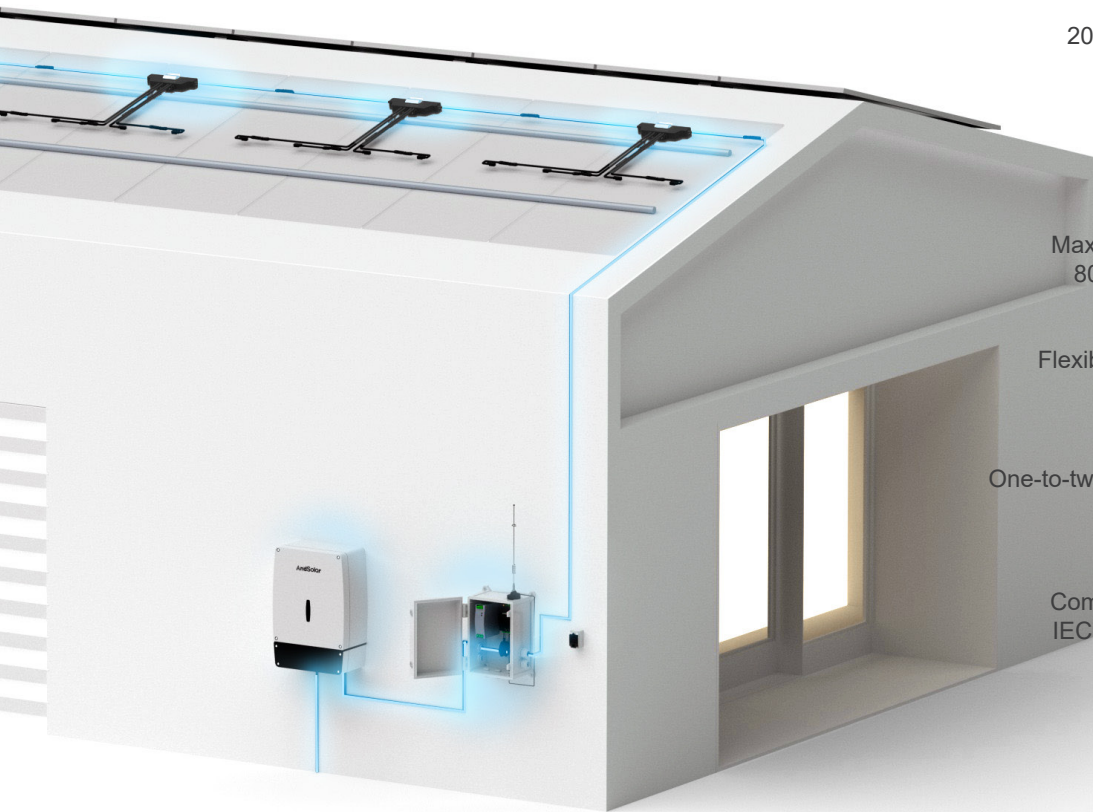


sales@andsolartech.com



8F, Block B, Building 1, 286 Qinglonggang Road, Suzhou City, Jiangsu Province, P. R. China

Product Features



Compliance with NEC 2017&2020(690.12) requirements



1V shutdown voltage to ensure DC side safety



Maximum communication distance: 800m to meet various application



Flexible installation method, with clip and bolt installation options



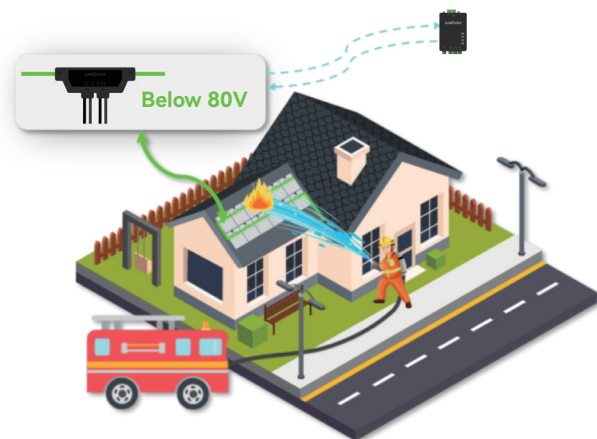
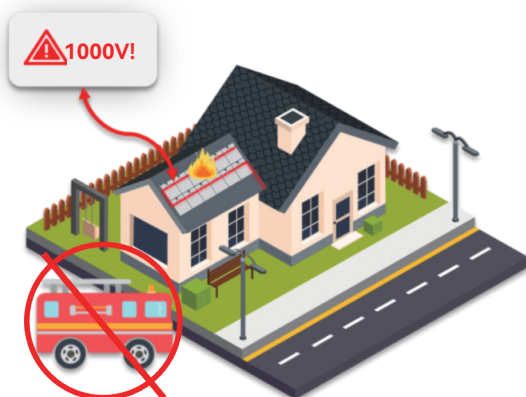
One-to-two design reduces power station construction costs



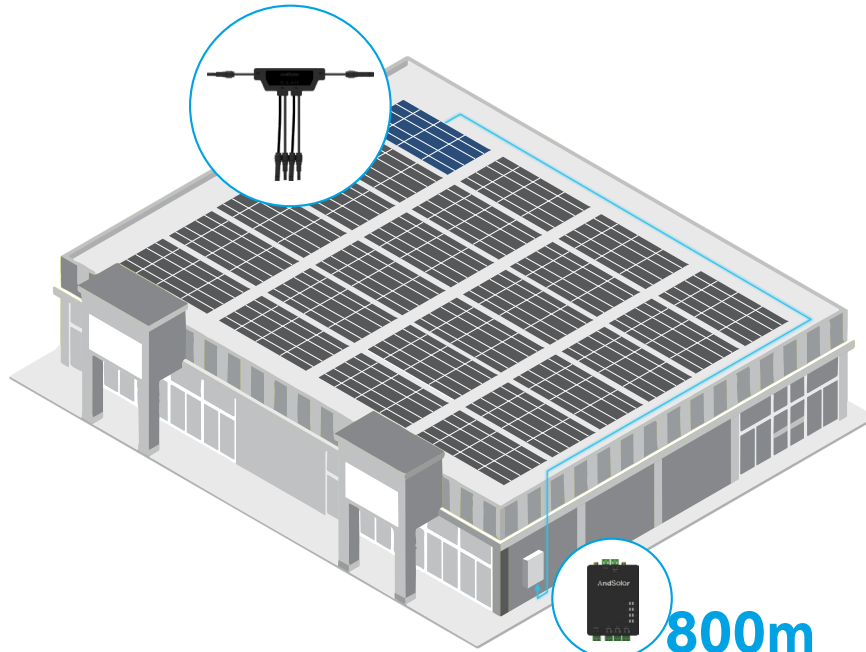
Compliance with UL 1741, UL 3741 IEC 62109-1, IEC 61000 standards and IP68 protection level



AND SAFE



And Flexible



800m

Max. Communication Distance from AMCL to ADCU

Flexible Installation

Bolt Installation



Clip Installation



And Reliable



Product Specifications

Model	AMCL-E2
Input	
Voltage Range	8-80V Single-channel, 120V Dual-channel
Maximum Rated Current	20A
Maximum Short-Circuit Current	30A
Output	
Voltage Range	8-120V
Maximum Rated Current	20A
Maximum Voltage in Disconnect State	1V
Mechanical	
Dimensions (W*D*H)	180*22*64mm
Input/Output Connectors	MC4/Compatible with MC4/Customizable
Input Cable Length	0.6m/Customizable
Output Cable Length	1.4m/Customizable
Temperature Range	-40~+85°C
Ingress Protection Rating	Type 6P/IP68
Other	
Communication Method	PLC
Maximum System Voltage	600/1000/1500V
Certification	
Safety	NEC 2017&2020(690.12), UL 1741, UL 3741, IEC 62109-1
EMC	FCC Part15, IEC/EN 61000-6-1/-2/-3/-4

System Topology

